

# TPFREP

# Terminal Performance Reporting

72<sup>nd</sup> SMDG Meeting in Hamburg

09 October 2018



# Hapag-Lloyd

# Information in the TPFREP – Terminal Performance Report



Implemented by



# TPFREP

## In this presentation

- New version TPFREP 4.1  
Summary of changes, Status
- TPFREP via Excel – standardize it ?  
proposal
- TPFREP Community – Best Practice  
proposal
- Vessel Timesheet – Standard Definitions?



# TPFREP Changes for next version 4.1

- New qualifiers needed, but no changes in message structure
- New qualifiers were published in D.18A repository by UN/CEFACT
- New TPFREP – MIG version 4.1 to be published by SMDG in Q4.2018

**SMDG Meeting in  
St.Petersburg  
Sept. 2017**

## **Decision on Changes**

The SMDG decided on the enhancements that will be in the next TPFREP version 4.1.  
All changes are explained in detail on next slides.

**07.02.2018**

The DMRs were submitted by the chairman to UN/CEFACT for approval

**SMDG Meeting April 2018**

**Edifact solutions and the DMRs were explained and agreed**

**June 2018**

All changes were approved by UN/CEFACT and published in D.18A directory

**Next -**

**>> Develop the new MIG for TPFREP 4.1 <<**

# TPFREP Changes for next version 4.1

## Summary

Requirement	Description
1. Identify TPFREP Light	Add new qualifier to BGM.de1001. <b>new code 873</b>
2. BGM function codes	Allow only: 1–Cancellation and 5–Replace and 9–Original
3. Vessel Timesheet	New codes for <i>Ordered gang start/end time</i> and for <i>Ready for cargo operation / Ready to sail</i> <b>New codes, see below</b>
4. Landside power supply	Add new qualifier for power generator <b>New code, see below</b>
5. Crane hours in overtime	Add new optional qualifier '504' to SG3/DTM/C507.2005 (crane section)
6. Reporting of Lashing Equipment	Add new qualifier for Lashing Equipment to SG3/QTY/C186.6063 <b>New codes, see below</b>
7. Separately report DG, OOG and Reefer containers	Add 3 new qualifiers DG, RFRDG and OOGDG (SMDG internal codes)
8. Generic container size type	Replace 20FT by 2%% and 40FT by 4%% etc in the MIG
9. Type of Move for Cabotage	Add 2 new qualifiers CTD and CTL (SMDG internal codes)
10. Restow Reasons	Already covered by existing codes TDL and TSH for Terminal Convenience restows. Better explanation in the MIG needed.

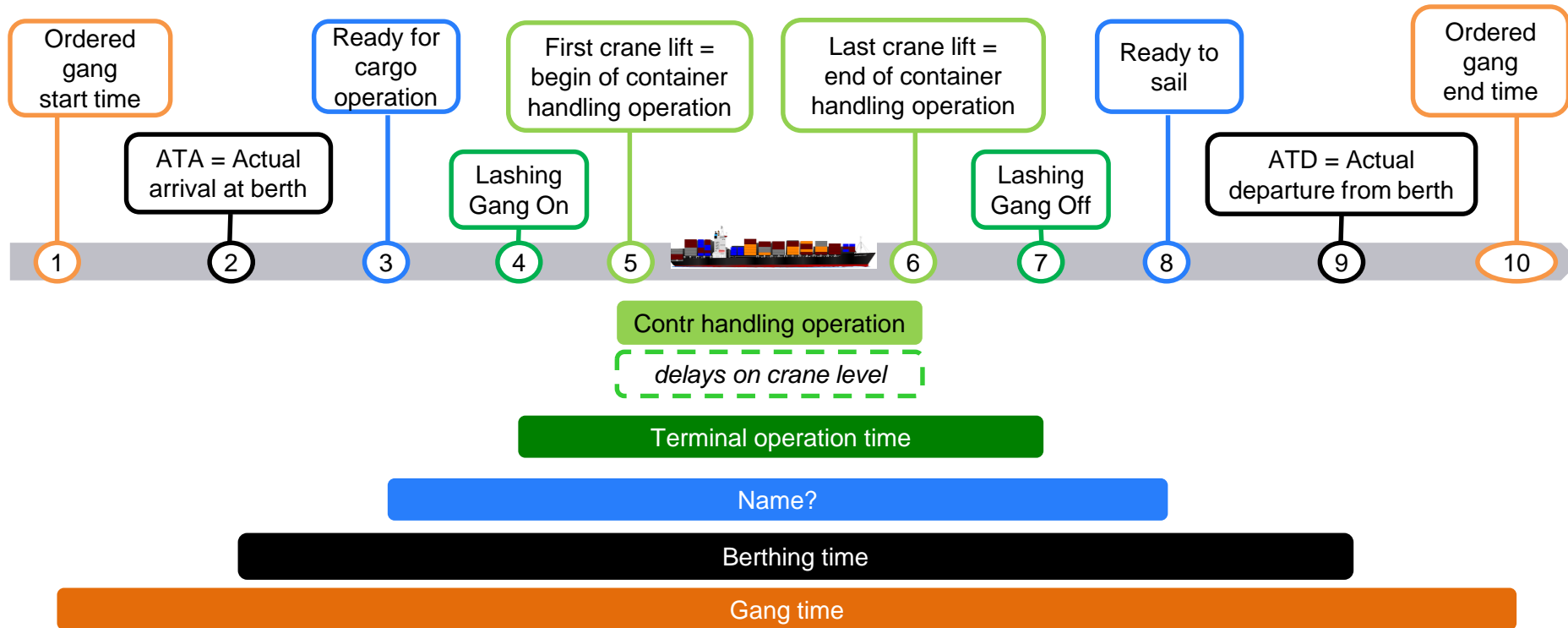
# TPFREP Changes for next version 4.1

Detail

Requirement	Decision SMDG
1. Identify <b>TPFREP Light</b> (if the message contains only the volumes for one carrier and not the total moves)	<i>Decision:</i> Add new qualifier to BGM/de1001 for “ <u>Partial</u> transport equipment movement report”  Currently only code 265 used for “transport equipment movement report” <b>New code 873</b>
2. BGM function codes	Allow only following values: 1 – Cancellation 5 – Replace 9 – Original

# TPFREP Changes for next version 4.1

Vessel time sheet, new events



# TPFREP Changes for next version 4.1

Detail

## 3. Vessel time sheet, event reporting - see illustration on next slide.

Use Case	Description	DTM Qualifier	New Codes
1. Ordered gang start time	Starting time when working gangs are ordered by the vessel operator	New	New code <b>816</b> in SG1 / DTM / C507.2005
10. Ordered gang end time	End time until when working gangs are ordered by the vessel operator	New	New code <b>817</b> in SG1 / DTM / C507.2005
2. Arrival berth	Actual vessel arrival = first line ashore	178	no action, already in MIG
9. Sailing time	Actual vessel departure = last line let go	186	
3. Ready for cargo operation	Readiness for cargo operations as reported by the vessel to the terminal	New	New code <b>818</b> in SG1 / DTM / C507.2005
8. Ready to sail	Outbound clearance, vessel reports to be ready to sail	New	New code <b>819</b> in SG1 / DTM / C507.2005
4. Lashing Gangs On	Begin of terminal operation	269	Codes remain in MIG with wording "Lashing Gangs On/Off"
7. Lashing Gangs Off	End of terminal operation	413	
5. First lift	First crane lift = first move	78	No need to change. First and last crane move are already in SG3/DTM on single crane level.
6. Last lift	Last crane lift = last move	same 78	

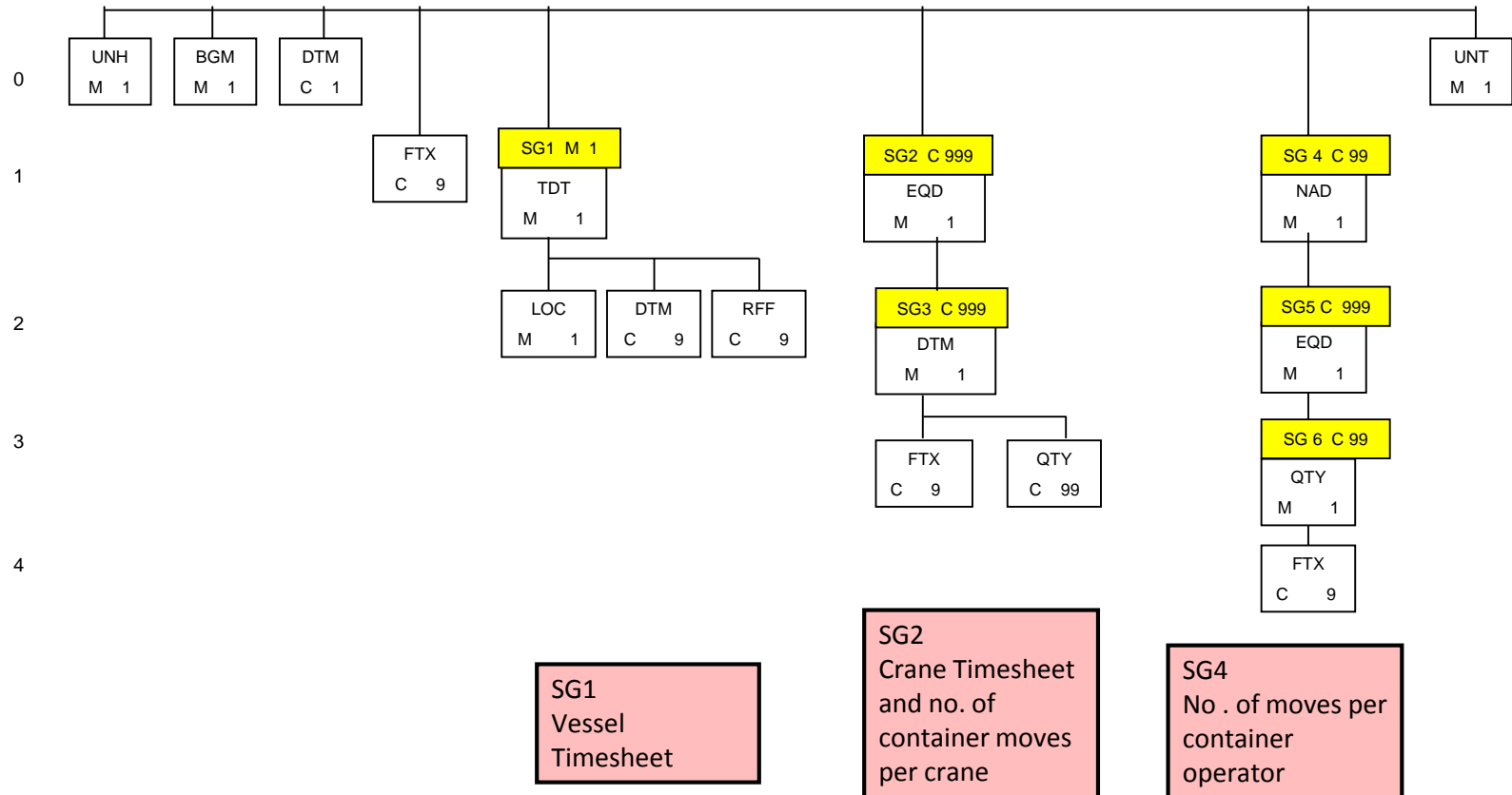


Requirement	Decision SMDG												
<p><b>4. Landside power supply</b> To report start+end date+time and amount of power (kWh) provided by the terminal.</p>	<p>Add new qualifier for “Landside power generator” to SG2/EQD/de8053 (currently used for type of crane). <b>New Code= EGI</b>  <b>Example for reporting 20000 KWH:</b>            EQD+<b>EGI</b>+G1’            DTM+78:201808291930-201808300200:719’            QTY+220:20000:KWH’</p> <p>Usage of QTY.C186:</p> <table border="0"> <tr> <td>6083</td> <td>Quantity type code qualifier</td> <td>220</td> <td>- Meter reading. The numeric value...</td> </tr> <tr> <td>6060</td> <td>Quantity</td> <td></td> <td></td> </tr> <tr> <td>6411</td> <td>Measurement unit code</td> <td>KWH</td> <td>- kilowatt hour</td> </tr> </table> <p>→ Which terminal would be a pilot candidate?</p>	6083	Quantity type code qualifier	220	- Meter reading. The numeric value...	6060	Quantity			6411	Measurement unit code	KWH	- kilowatt hour
6083	Quantity type code qualifier	220	- Meter reading. The numeric value...										
6060	Quantity												
6411	Measurement unit code	KWH	- kilowatt hour										
<p><b>5. Crane Hours in Overtime</b> Report crane hours in overtime, amount of boxes in overtime, type + reason for overtime, responsible partner for overtime</p>	<p>Add optional qualifier ‘504’ to SG3/DTM/C507.2005 (<b>existing qualifier, no DMR</b>)            That new code denotes the crane working time and the number of moves are reported as Overtime.            Type + reason + responsible party for overtime cannot be reported.</p>												

Requirement	Decision SMDG																		
<p><b>6. Reporting of Lashing Equipment</b> To report additional crane moves for Lashing Material (synonyms: Twistlock Boxes / Gear Bins / lashing bars)</p>	<p>Add new qualifier for Lashing Equipment to SG3/QTY/C186.6063 (volume by crane, same level as hatch cover moves). <b>New Code = 529</b></p>																		
<p><b>7. Separately report DG, OOG and Reefer containers.</b>  (no temperature settings and no DG details/IMDG class to be reported!)</p>	<p>Add new qualifiers for DG in SG5/EQD/de8154 (volume by operator)</p> <table><tr><td><b>STD</b></td><td>- Standard</td><td>existing</td></tr><tr><td><b>RFR</b></td><td>- Active Reefer</td><td>existing</td></tr><tr><td><b>OOG</b></td><td>- OOG</td><td>existing</td></tr><tr><td><b>DG</b></td><td>- DG</td><td>new</td></tr><tr><td><b>RFRDG</b></td><td>- Reefer DG</td><td>new</td></tr><tr><td><b>OOGDG</b></td><td>- OOG DG</td><td>new</td></tr></table> <p>→ These are SMDG internal codes, no DMR needed.</p>	<b>STD</b>	- Standard	existing	<b>RFR</b>	- Active Reefer	existing	<b>OOG</b>	- OOG	existing	<b>DG</b>	- DG	new	<b>RFRDG</b>	- Reefer DG	new	<b>OOGDG</b>	- OOG DG	new
<b>STD</b>	- Standard	existing																	
<b>RFR</b>	- Active Reefer	existing																	
<b>OOG</b>	- OOG	existing																	
<b>DG</b>	- DG	new																	
<b>RFRDG</b>	- Reefer DG	new																	
<b>OOGDG</b>	- OOG DG	new																	

Requirement	Decision SMDG
8. Generic container Size Type	<p>Align container size-type reporting with SMDG standard: In SG5/EQD/C224.8155 <u>Currently</u> “<b>20FT</b>” = 20 Feet Container, “<b>40FT</b>” = 40 Feet Container etc. <u>Should be:</u> Report the leading 2 digits of the ISO size-type code followed by %%. Examples: <b>22%%</b> = container with length 20 ft and height 8'6 <b>L5%%</b> = container with length 45 ft and height 9'6</p>
9. <b>Type of Move for Cabotage</b>  Special reporting for Coastal (=cabotage) is important in Brazil and China	<p><i>Decision:</i> although it appears to be a special requirement, it can easily be covered by new codes in SG6/FTX/C107.4441 Therefore suggest to add two new codes: a. ‘<b>CTD</b>’ Number of containers discharged from Coastal transport for transshipment b. ‘<b>CTL</b>’ Number of containers loaded from transshipment for Coastal transport <b>→ These are SMDG internal codes, no DMR needed.</b></p>
10. Restow Reasons	<p>Already covered by existing codes TDL and TSH for Terminal Convenience restows. Better explanation in the MIG needed.</p>

# TPFREP 4.1 based on D.11B



# TPFREP Message – SMDG working Group

## Work Group Members

1. Michael Schröder (chair)
2. Ori Ben-Shimon (ZIM)
3. Heidi Stemler / Sönke Witt (HHLA)
4. Arthur Touzot, (SMDG/ATSea Consulting)
5. Marc Jordens, Hamburg Süd
6. Boudewijn de Kievit (ECT)
7. Patrick Straka (MSK)
8. Wendy Jamarillo (NAVIS)
9. Jeroen Muis (Copas)
10. Emmanuel Odartey (TEC, Ghana)

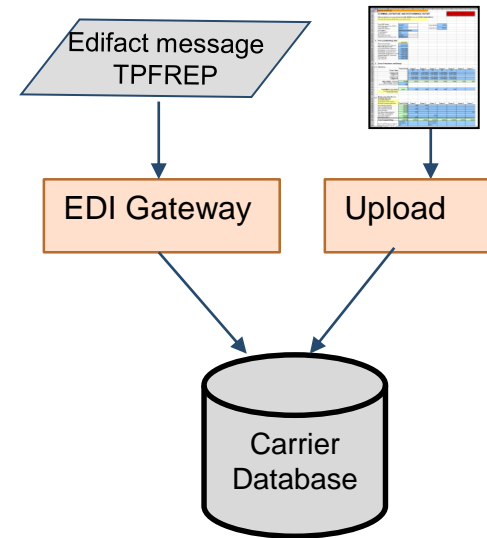


# TPFREP via Excel – standardize it ?

- Worldwide roughly 100 terminals reporting via EDI and 300 via Excel or individual format
- Carriers are using standard Excel template – but each carrier has a slightly different format. Two examples below.
- Should the SMDG workgroup aim to harmonize the templates and publish a standard Excel Template? ➔ Open for discussion!

EDI

Excel



**TERMINAL DEPARTURE AND PERFORMANCE REPORT**

This spreadsheet is an excel version of the EDI message TPFREP (SMDG 205)

Terminal Code	Terminal Name	Terminal Type
100000	Amsterdam	General
100001	Amsterdam	General
100002	Amsterdam	General
100003	Amsterdam	General
100004	Amsterdam	General
100005	Amsterdam	General
100006	Amsterdam	General
100007	Amsterdam	General
100008	Amsterdam	General
100009	Amsterdam	General
100010	Amsterdam	General

**1. Facts and Berthing Time**

Terminal Code	Terminal Name	Terminal Type
100000	Amsterdam	General
100001	Amsterdam	General
100002	Amsterdam	General
100003	Amsterdam	General
100004	Amsterdam	General
100005	Amsterdam	General
100006	Amsterdam	General
100007	Amsterdam	General
100008	Amsterdam	General
100009	Amsterdam	General
100010	Amsterdam	General

**2. Crane Timesheet and Delay**

Crane ID	Crane Type	Crane Status	Crane Location	Crane Operator	Crane Start	Crane End	Crane Delay
100000	General	OK	Amsterdam	Operator	2018-10-01 08:00	2018-10-01 12:00	0:00
100001	General	OK	Amsterdam	Operator	2018-10-01 08:00	2018-10-01 12:00	0:00
100002	General	OK	Amsterdam	Operator	2018-10-01 08:00	2018-10-01 12:00	0:00
100003	General	OK	Amsterdam	Operator	2018-10-01 08:00	2018-10-01 12:00	0:00
100004	General	OK	Amsterdam	Operator	2018-10-01 08:00	2018-10-01 12:00	0:00
100005	General	OK	Amsterdam	Operator	2018-10-01 08:00	2018-10-01 12:00	0:00
100006	General	OK	Amsterdam	Operator	2018-10-01 08:00	2018-10-01 12:00	0:00
100007	General	OK	Amsterdam	Operator	2018-10-01 08:00	2018-10-01 12:00	0:00
100008	General	OK	Amsterdam	Operator	2018-10-01 08:00	2018-10-01 12:00	0:00
100009	General	OK	Amsterdam	Operator	2018-10-01 08:00	2018-10-01 12:00	0:00
100010	General	OK	Amsterdam	Operator	2018-10-01 08:00	2018-10-01 12:00	0:00



**TERMINAL DEPARTURE AND PERFORMANCE REPORT**

This spreadsheet is an excel version of the EDI message TPFREP (SMDG 205)

Terminal Code	Terminal Name	Terminal Type
100000	Amsterdam	General
100001	Amsterdam	General
100002	Amsterdam	General
100003	Amsterdam	General
100004	Amsterdam	General
100005	Amsterdam	General
100006	Amsterdam	General
100007	Amsterdam	General
100008	Amsterdam	General
100009	Amsterdam	General
100010	Amsterdam	General

**1. Facts and Berthing Time**

Terminal Code	Terminal Name	Terminal Type
100000	Amsterdam	General
100001	Amsterdam	General
100002	Amsterdam	General
100003	Amsterdam	General
100004	Amsterdam	General
100005	Amsterdam	General
100006	Amsterdam	General
100007	Amsterdam	General
100008	Amsterdam	General
100009	Amsterdam	General
100010	Amsterdam	General

**2. Crane Timesheet and Delay**

Crane ID	Crane Type	Crane Status	Crane Location	Crane Operator	Crane Start	Crane End	Crane Delay
100000	General	OK	Amsterdam	Operator	2018-10-01 08:00	2018-10-01 12:00	0:00
100001	General	OK	Amsterdam	Operator	2018-10-01 08:00	2018-10-01 12:00	0:00
100002	General	OK	Amsterdam	Operator	2018-10-01 08:00	2018-10-01 12:00	0:00
100003	General	OK	Amsterdam	Operator	2018-10-01 08:00	2018-10-01 12:00	0:00
100004	General	OK	Amsterdam	Operator	2018-10-01 08:00	2018-10-01 12:00	0:00
100005	General	OK	Amsterdam	Operator	2018-10-01 08:00	2018-10-01 12:00	0:00
100006	General	OK	Amsterdam	Operator	2018-10-01 08:00	2018-10-01 12:00	0:00
100007	General	OK	Amsterdam	Operator	2018-10-01 08:00	2018-10-01 12:00	0:00
100008	General	OK	Amsterdam	Operator	2018-10-01 08:00	2018-10-01 12:00	0:00
100009	General	OK	Amsterdam	Operator	2018-10-01 08:00	2018-10-01 12:00	0:00
100010	General	OK	Amsterdam	Operator	2018-10-01 08:00	2018-10-01 12:00	0:00

# TPFREP Community – Best Practice

- When implementing TPFREP, carriers and terminals often come across similar questions in different parts of the world.  
Why not learn from each other and exchange solutions for typical questions.  
This could even be input for new standards.

ZIM suggests to establish a "TPFREP User Community" of carriers and terminals in order to exchange best practices and experiences.

- To start via email distribution, later possibly Chat Room on the new SMDG website.
- → Open for discussion!  
Are carriers and terminals interested to join?  
Who wants to become the "Administrator"?



# Vessel Timesheet – Standard Definitions?

- When discussing the vessel timesheet in the workgroup it appears that there is no standard definition for the events below.
- Examples: When is ATA: first line ashore or last line fastened? When is Begin of Operation: Start of unlashng or First Move? What exactly is basis for calculation of terminal productivity times? What means “Lashing gang on?”
- Is there a common standard definition that could be used as reference?  
If not, should this workgroup develop a recommendation for standard terms definition?
- → open for discussion !

