

TPFREP

Terminal Performance Reporting

69th SMDG Meeting in Genoa

15th March 2017



Hapag-Lloyd

TPFREP Message – SMDG working Group

Members of the SMDG Working Group TPFREP

This new working group was formed at the SMDG meeting in Oct.2016 in Hamburg.

1. Michael Schröder (chair)
2. Marc Jordens, Hamburg Süd
3. Boudewijn de Kievit (ECT)
4. Patrick Straka (MSK)
5. Heidi Stemler (HHLA)
6. Wendy Jamarillo (NAVIS)
7. Arthur Touzot, (SMDG/ATSea Consulting)
8. Jeroen Muis (Copas)
9. Emmanuel Odartey (TEC)



Information in the TPFREP – Terminal Performance Report

Refresher



TPFREP - Terminal Performance Reporting EDIFACT Message

■ TPFREP 3.0 based on D.00B directory

was developed by SMDG several years ago. Hapag-Lloyd started implementation in 2008.

Currently **86 terminals** world wide are sending the EDI message version 3.0

■ TPFREP 4.0 based on D.11B directory

was published by SMDG in October 2012.

Summary of Changes :

- Improved message structure.
- All temporary qualifiers and codes replaced by codes officially approved by UN/CEFACT.
- Out of Gauge and Temperature Controlled cargo can be reported separately.
- Breakbulk cargo per Operator can be reported.

As per March 2017, some 24 terminals worldwide are preparing TPFREP 4.0 implementation.
Productive usage is increasing.

TPFREP Usage

Hapag-Lloyd Example

Ships in port are an expensive asset. To reduce inefficient port times, carrier would like to steer two aspects: **idle time** and **productivity**.



a) **Idle time** is the time where no cargo operation takes place:

- a. Total idle time = Berth duration in hours – working time
- b. Pre idle time = First lift – arrival berth
- c. Post idle time = Departure berth – last lift

b) **Productivity** expresses the efficiency of the working time. Many different factors are influencing the efficiency:

- a. Call Size [moves]
- b. Number of cranes per hour
- c. Vessel Moves per hour (Gross / Net)
- d. Crane Moves per hour (Gross / Net)

 **Hapag-Lloyd**

- **TPFREP 3.0** first production rollout was August 2008
 - **Two reporting channels** are offered to the terminals: EDI and Excel.
 - **86** active terminals send **EDI** message TPFREP
 - **291** active terminals send the standardized **Excel** template with same data content as the TPFREP 3.0
- Currently testing TPFREP 4.0 with some terminals . Both TPFREP versions (3 and 4) will be supported in parallel.



- Implementing **only version 4.0**
- Using own MIG, not the SMDG MIG
- 7 terminals connected, 5 more in test
- HSD has enhancement requests



ZIM Lines is testing
with 4 terminals



Maersk Line is evaluating the
usage of TPFREP, a possible
implementation is planned for
2017 in pilot locations.



- **Versions 3.0** has been in use for many years
- **Versions 4.0** pilot implementations in 2016
- CMA CGM has enhancement requests on scope and detail level of the message



The XVELA application under development will
support the TPFREP, planned for 2017.

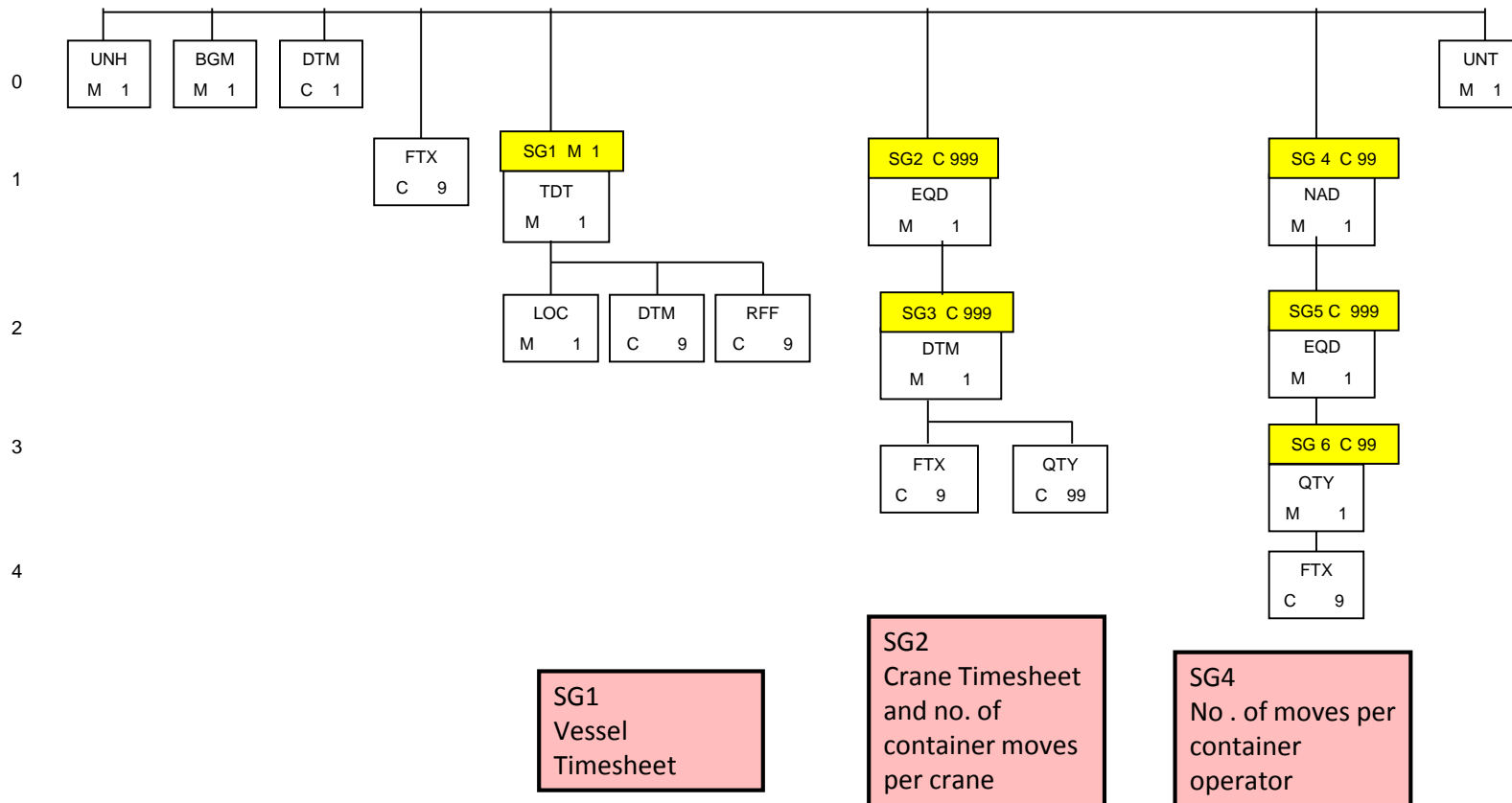
NAVIS plans to improve the support of the TPFREP
message in their terminal operating software.
This will make the TPFREP implementation easier
for many terminals.

TPFREP Requirements for next version

Details in separate Word document

Separately report DG, OOG and Reefer containers	Bundled Flats + Twin Lift + Quad lift
"Unused Gang Time" Before vessel ATA and after ATD	Report the weight of the containers
Time of Ordered crane/shift	Landside power supply
Volume in Overtime	Restow Reasons
Vessel timesheet: Additional events	Type of Move
<i>Lashing gang on / off vs begin / end of operation</i>	Yard Equipment
Identify TPFREP Light	

TPFREP 4.0 based on D.11B



TPFREP Message – Working Group To Do

→ → Develop a new TPFREP 4.1 MIG

**SMDG
Meeting in
Genoa
14.3.2017**

Work on the wish list

- Evaluate each item on the list and decide whether it is a candidate for the next version TPFREP 4.1
Consider both the requirements from the carriers as well as the capabilities of the terminals sending.
- Decide what will be in the next TPFREP version.
 - Come up with first ideas of how to solve in Edifact.

04.2017 to 10.2017

Detail the Edifact solutions

Write the DMRs and ask the SMDG for approval

**At next SMDG
Meeting Oct.2017**

Approve the DMRs
and submit to UN/CEFACT

10.2017 to 04.2018

Develop the new MIG for TPFREP 4.1

Q2.2018

UN/CEFACT to publish the new structure in D.18A
SMDG to publish the TPFREP 4.1 MIG