

# TPFREP

# Terminal Performance Reporting

70<sup>th</sup> SMDG Meeting in St. Petersburg

27 September 2017



# Hapag-Lloyd

# TPFREP Message – SMDG working Group

## Members of the SMDG Working Group TPFREP

This new working group was formed at the SMDG meeting in Oct.2016 in Hamburg.

1. Michael Schröder (chair)
2. Marc Jordens, Hamburg Süd
3. Boudewijn de Kievit (ECT)
4. Patrick Straka (MSK)
5. Heidi Stemler / Sönke Witt (HHLA)
6. Wendy Jamarillo (NAVIS)
7. Arthur Touzot, (SMDG/ATSea Consulting)
8. Jeroen Muis (Copas)
9. Emmanuel Odartey (TEC, Ghana)
10. Ori Ben-Shimon (ZIM)



# Information in the TPFREP – Terminal Performance Report

Refresher



## TPFREP - Terminal Performance Reporting EDIFACT Message

### ■ TPFREP 3.0 based on D.00B directory

was developed by SMDG several years ago. Hapag-Lloyd started implementation in 2008.

Currently **88 terminals** world wide are sending the EDI message version 3.0

### ■ TPFREP 4.0 based on D.11B directory

was published by SMDG in October 2012.

#### Summary of Changes :

- Improved message structure.
- All temporary qualifiers and codes replaced by codes officially approved by UN/CEFACT.
- Out of Gauge and Temperature Controlled cargo can be reported separately.
- Breakbulk cargo per Operator can be reported.

As per September 2017, some 28 terminals worldwide are preparing TPFREP 4.0 implementation.  
Productive usage is increasing.

 **Hapag-Lloyd**

- **TPFREP 3.0** first production rollout was August 2008
  - **Two reporting channels** are offered to the terminals: EDI and Excel.
    - **88** active terminals send **EDI** message TPFREP
    - **300** active terminals send the standardized **Excel** template with same data content as the TPFREP 3.0
- Currently implementing TPFREP 4.0 with some terminals . Both TPFREP versions (3 and 4) will be supported in parallel.

 **HAMBURG SÜD**

- Implementing **only version 4.0**
- Using own MIG, not the SMDG MIG.
- 19 terminals connected, more in test
- HSD has enhancement requests

 **ZIM70**  
SINCE 1945

ZIM Lines has set up some 15 terminals

 **MAERSK LINE**

Maersk Line is evaluating the usage of TPFREP, a possible implementation is planned for 2018 in pilot locations with APMT.

 **CMA CGM**

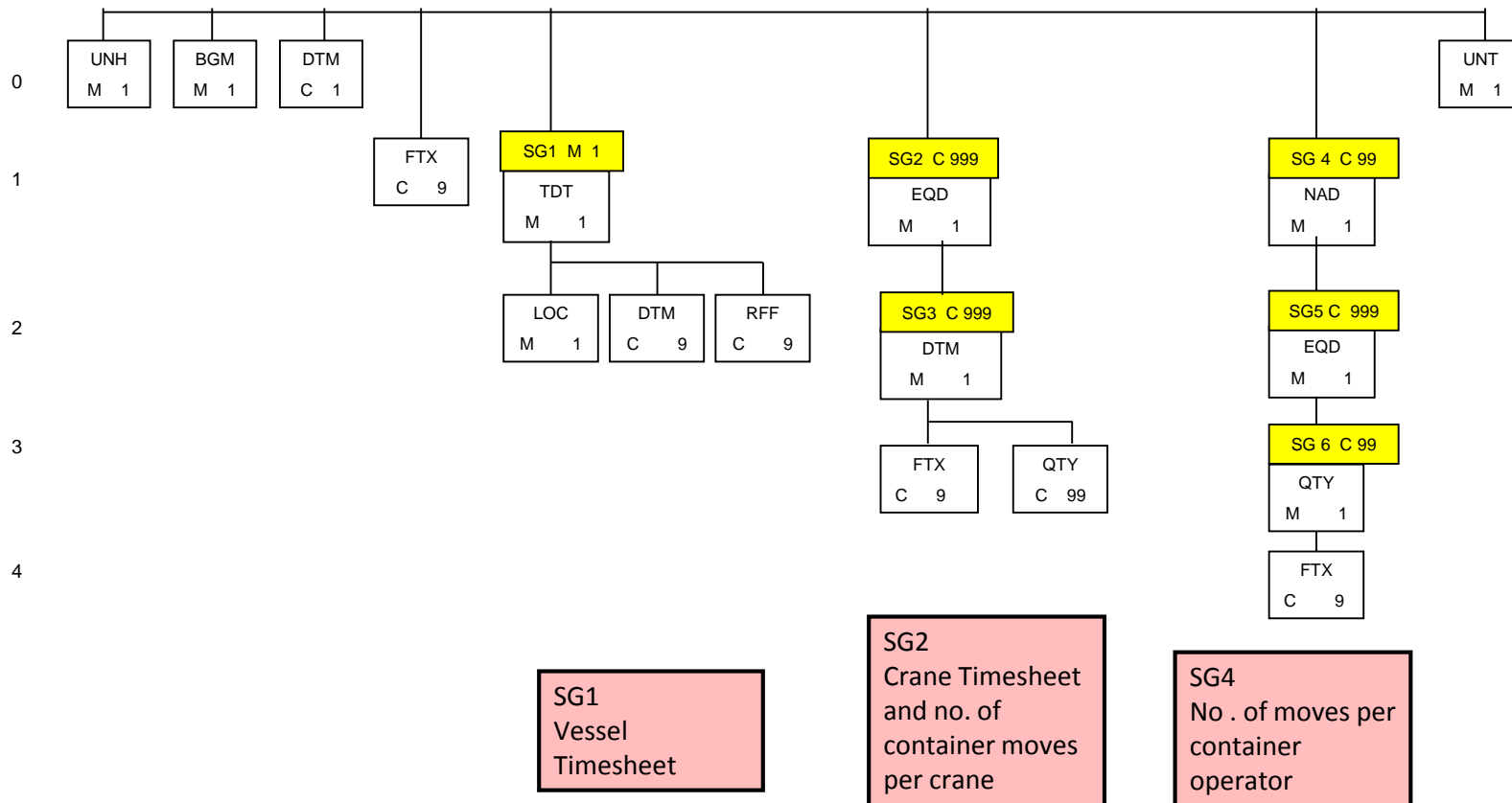
- **Versions 3.0** has been in use for many years
- **Versions 4.0** pilot implementations in 2016
- CMACGM has enhancement requests on scope and detail level of the message

 **XVELA**

The XVELA application under development will support the TPFREP, planned for 2017.

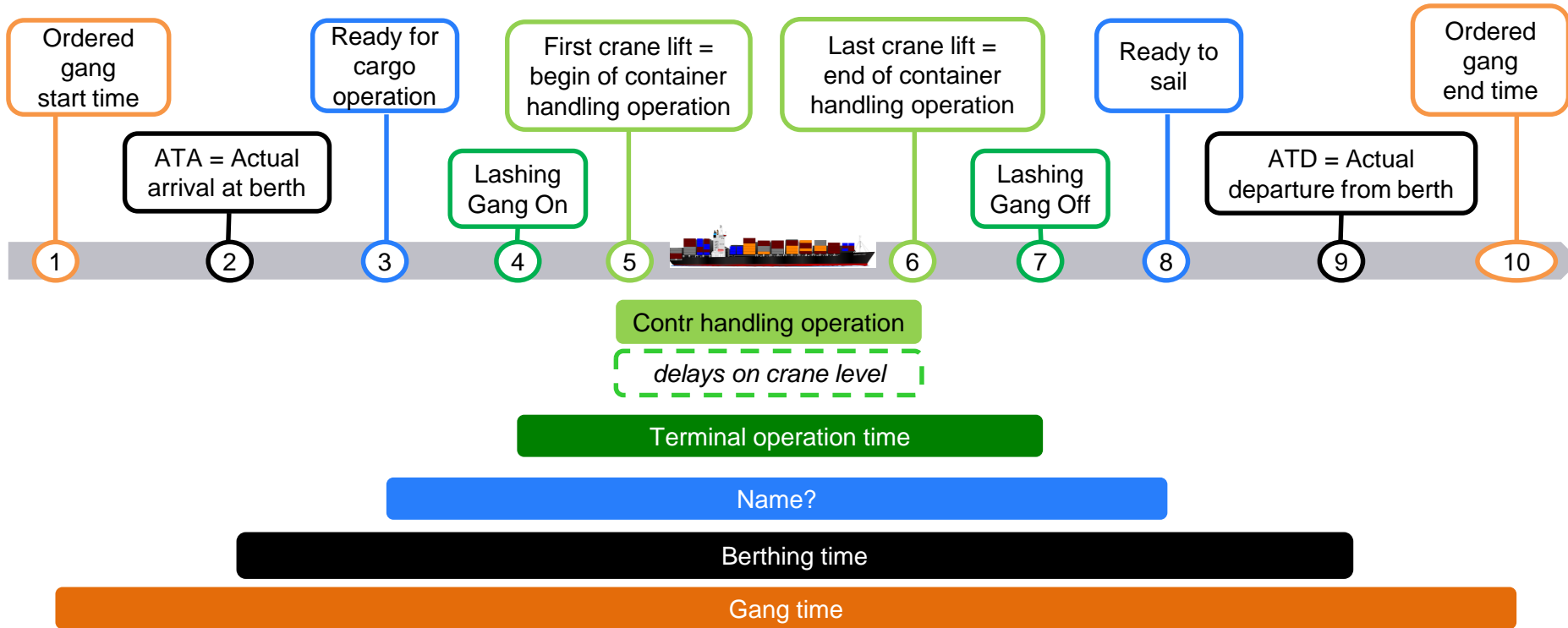
NAVIS plans to improve the support of the TPFREP message in their terminal operating software. This will make the TPFREP implementation easier for many terminals.

# TPFREP 4.0 based on D.11B



# TPFREP Requirements for next version 4.1

Vessel time sheet, new events



Use Case	Description
Vessel time sheet	New codes for <i>Ordered gang start/end time</i> and for <i>Ready for cargo operation / Ready to sail</i> <b>DMRs required</b>
4. Crane hours in overtime	Add new optional qualifier '504' to SG3/DTM/C507.2005 (crane section)
7. Lashing Equipment	Add new qualifier for Lashing Equipment to SG3/QTY/C186.6063 <b>DMR required</b>
8 Bundled Flats + Twin Lift + Quad lift	Not needed – no action
9 Report the weight of the containers	Not needed – no action
10 Landside power supply	Add new qualifiers <b>DMR required</b>
11 Restow reasons	No action needed, already covered
12 Type of Move for Cabotage	Add 2 new qualifiers CTD and CTL (SMDG internal codes)
13 Identify TPFREP Light	Add new qualifier to BGM.de1001. <b>DMR required</b>
14 Generic container size type	Replace 20FT by 2%%% and 40FT by 4%%% etc in the MIG
#15 BGM function codes	Allow only: 1–Cancellation and 5–Replace and 9–Original



# TPFREP Requirements for next version 4.1

## Vessel time sheet, event reporting

Use Case	Description	DTM Qualifier	Proposed Action	Decision SMDG 70 <sup>th</sup> Meeting
1. Ordered gang start time	Starting time when working gangs are ordered by the vessel operator	new	new code DMR	Request for 2 new codes
10. Ordered gang end time	End time until when working gangs are ordered by the vessel operator	new	new code DMR	
2. Arrival berth	Actual vessel arrival = first line ashore	178	no action, already in MIG	- / -
9. Sailing time	Actual vessel departure = last line let go	186	no action, already in MIG	
3. Ready for cargo operation	Readiness for cargo operations as reported by the vessel to the terminal	new	new code DMR	Request for 2 new codes
8. Ready to sail	Outbound clearance, vessel reports to be ready to sail	new	new code DMR	
4. Lashing Gangs On	Begin of terminal operation	269	Codes already in MIG, change description?	Codes remain in MIG with wording "Lashing Gangs On/Off"
7. Lashing Gangs Off	End of terminal operation	413		
5. First lift	First crane lift = first move	78	First and last crane move are already in SG3/DTM on single crane level. No need to repeat in vessel time sheet.	No need to change.
6. Last lift	Last crane lift = last move	same 78		

# TPFREP Requirements for next version 4.1

Details in separate Word document (#numbers refer)

Requirement	Decision SMDG 70 <sup>th</sup> Meeting																		
<p>#1 Separately report <b>DG</b>, OOG and Reefer containers.</p> <p>(no temperature settings and no DG details/IMDG class to be reported!)</p>	<p>Add new qualifiers for DG in SG5/EQD/de8154 (volume by operator)</p> <table><tr><td>STD</td><td>- Standard</td><td>existing</td></tr><tr><td>RFR</td><td>- Active Reefer</td><td>existing</td></tr><tr><td>OOG</td><td>- OOG</td><td>existing</td></tr><tr><td>DG</td><td>- DG</td><td>new</td></tr><tr><td>RFRDG</td><td>- Reefer DG</td><td>new</td></tr><tr><td>OOGDG</td><td>- OOG DG</td><td>new</td></tr></table> <p><b>These are SMDG internal codes, no DMR needed.</b></p>	STD	- Standard	existing	RFR	- Active Reefer	existing	OOG	- OOG	existing	DG	- DG	new	RFRDG	- Reefer DG	new	OOGDG	- OOG DG	new
STD	- Standard	existing																	
RFR	- Active Reefer	existing																	
OOG	- OOG	existing																	
DG	- DG	new																	
RFRDG	- Reefer DG	new																	
OOGDG	- OOG DG	new																	
<p>#4 <b>Overtime</b></p> <p>Report crane hours in overtime, amount of boxes in overtime, type + reason for overtime, responsible partner for overtime</p>	<p>Add new optional qualifier '504' to SG3/DTM/C507.2005</p> <p>That new code denotes the crane working time and the number of moves are reported as Overtime.</p> <p>Type + reason + responsible party for overtime cannot be reported.</p>																		

# TPFREP Requirements for next version 4.1

Details in separate Word document (#numbers refer)

Requirement	Decision SMDG
<p><b>#7 Lashing Equipment Box</b> To report additional crane moves for Lashing Material (Twistlock Boxes / Gear Bins / lashing bars)</p>	<p>Add new qualifier for Lashing Equipment to SG3/QTY/C186.6063 (volume by crane, same level as hatch cover moves). <b>DMR required!</b></p> 
<p><b>#8 Bundled Flats + Twin Lift + Quad lift</b></p>	<p>Not needed – no action</p>
<p>#9 Report the <b>weight</b> of the containers</p>	<p>Not needed – no action</p>
<p>#15 BGM function codes</p>	<p>Allow only following values: 1 – Cancellation 5 – Replace 9 – Original</p>

# TPFREP Requirements for next version 4.1

Details in separate Word document (#numbers refer)

Requirement	Decision SMDG
<p><b>#10 Landside power supply</b> To report start+end date+time and amount of power (kWh) provided by the terminal.</p>	<p>Add new qualifier for “Landside power generator” to SG2/EQD/de8053 (currently used for type of crane). Add new qualifier for “kWh” to SG3/QTY/C186.6063 (currently used for volume by crane). <b>DMRs required!</b> <b>Example:</b> EDQ+generator+G1’ DTM+78:201808291930-201808300200:719’ QTY+kWh:20000’</p> <p>Question:Which terminal would be a pilot candidate?</p>
<p><b>#11 Restow Reasons</b></p>	<p>Already covered by SG6/FTX/C107.4441 Use codes TDL and TSH for Terminal Convenience restows, all other codes for restows instructed by operator. <b>→ No action needed.</b></p>

# TPFREP Requirements for next version 4.1

Details in separate Word document (#numbers refer)

Requirement	Decision SMDG
<p>#12 <b>Type of Move</b> Special reporting for Coastal (=cabotage) is important in Brazil and China</p>	<p><i>Decision:</i> although it appears to be a special requirement, it can easily be covered by new codes in SG6/FTX/C107.4441 Therefore suggest to add two new codes: a. 'CTD' Number of containers discharged from Coastal transport for transshipment b. 'CTL' Number of containers loaded from transshipment for Coastal transport <b>These are SMDG internal codes, no DMR needed.</b></p>
<p>#13 Identify <b>TPFREP Light</b> (if the message contains only the volumes for one carrier and not the total moves)</p>	<p><i>Decision:</i> Add new qualifier to BGM/de1001 for "<u>Partial</u> transport equipment movement report"  Currently only code 265 used for "transport equipment movement report" <b>DMR required!</b></p>
<p>#14 Align container size-type reporting with SMDG standard</p>	<p>In SG5/EQD/C224.8155 <u>Currently</u> "20FT" = 20 Feet Container, "40FT" = 40 Feet Container etc. <u>Should be:</u> Report the leading 2 digits of the ISO size-type code followed by %%. Examples: 22%% = container with length 20 ft and height 8'6 L5%% = container with length 45 ft and height 9'6</p>

# TPFREP Message – Working Group To Do

→ → Develop a new TPFREP 4.1 MIG

**SMDG  
Meeting in  
St.Petersburg  
27.9.2017**

## **Work on the wish list**

- Evaluate each item on the list and decide whether it is a candidate for the next version TPFREP 4.1  
Consider both the requirements from the carriers as well as the capabilities of the terminals sending.
- Decide what will be in the next TPFREP version.
  - Come up with first ideas of how to solve in Edifact.

**10.2017 to 02.2018**

## **Detail the Edifact solutions**

Write the DMRs and ask the SMDG for approval

**At next SMDG  
Meeting April 2018**

**Approve the DMRs**  
and submit to UN/CEFACT

**04.2018 to 09.2018**

## **Develop the new MIG for TPFREP 4.1**

**Q4.2018**

UN/CEFACT to publish the new structure in D.18A  
SMDG to publish the TPFREP 4.1 MIG