

DESTIM Equipment Damage and Repair Estimate Message

Introduction:

A message for use by the container repair, shipping and leasing industry. It may be used by a container equipment repair depot to send an owner or user a description of damages to the equipment, as an estimate of the repair actions and costs needed to rectify such damages. A recipient owner may forward the estimate to a lessee. The message may also be used by an owner or lessee as an authorization message to the repair depot to perform the repairs indicated in the estimate, and as an acknowledgment of his willingness to pay for those repairs indicated in the estimate for his account.

Heading Section:

<u>Page No.</u>	<u>Pos. No.</u>	<u>Seg. ID</u>	<u>Name</u>	<u>Req. Des.</u>	<u>Max.Use</u>	<u>Group Repeat</u>
6	0010	UNH	Message Header	M	1	
7	0020	BGM	Beginning of Message	M	1	
8	0030	DTM	Date/Time/Period	M	9	
9	0050	CUX	Currencies	C	9	
10	0060	RFF	Reference	C	9	
11	0070	FTX	Free Text	C	9	
	0080		Segment Group 1: EQD	M		1
13	0090	EQD	Equipment Details	M	1	
	0120		Segment Group 2: NAD-MOA-SG3	C		9
15	0130	NAD	Name and Address	M	1	
17	0140	MOA	Monetary Amount	C	9	
	0150		Segment Group 3: CTA	C		9
19	0160	CTA	Contact Information	M	1	

Section Control:

<u>Page No.</u>	<u>Pos. No.</u>	<u>Seg. ID</u>	<u>Name</u>	<u>Req. Des.</u>	<u>Max.Use</u>	<u>Group Repeat</u>
20	0220	UNS	Section Control	M	1	

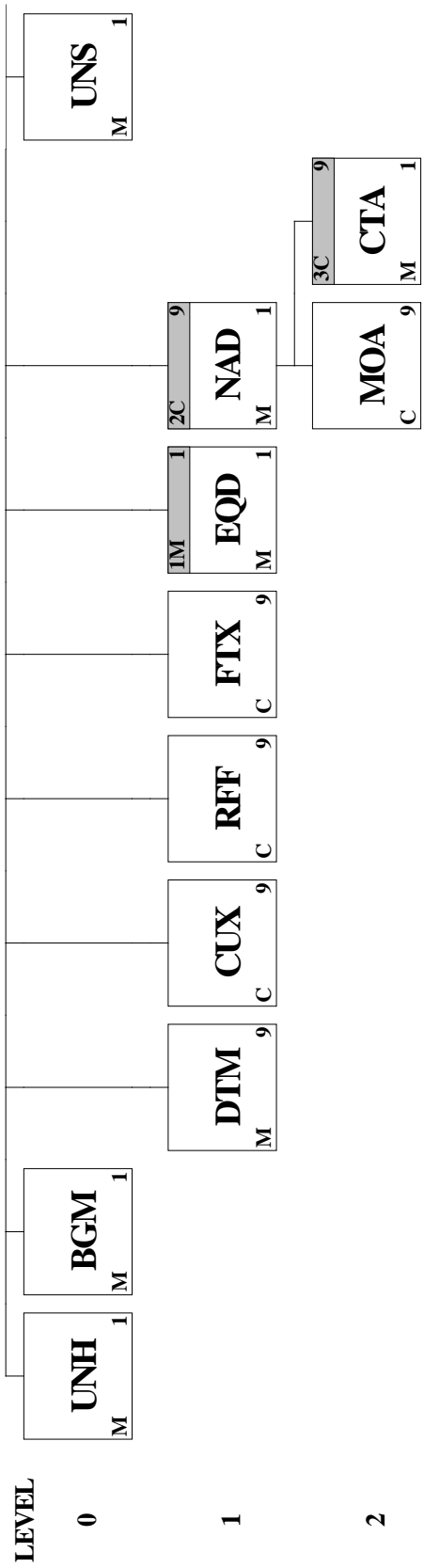
Detail Section:

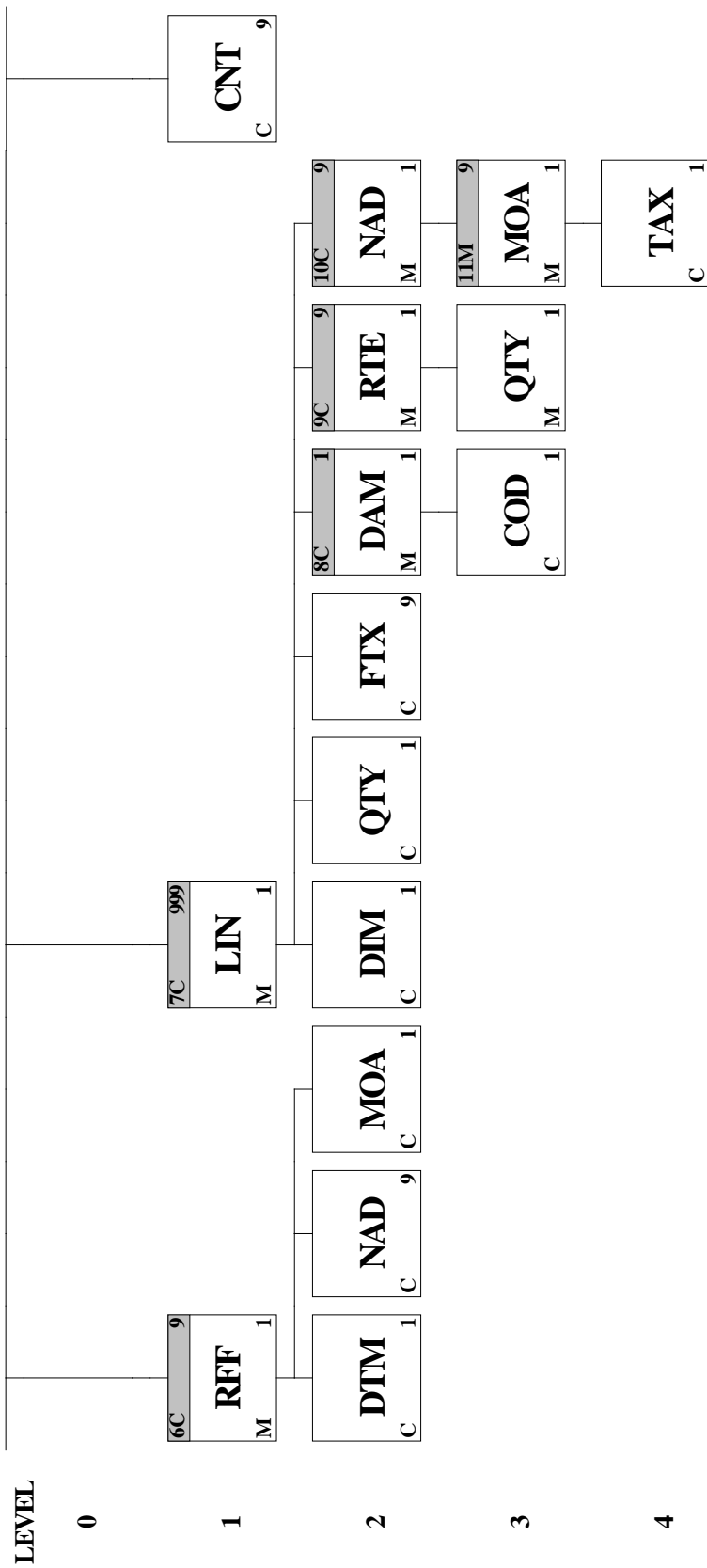
<u>Page No.</u>	<u>Pos. No.</u>	<u>Seg. ID</u>	<u>Name</u>	<u>Req. Des.</u>	<u>Max.Use</u>	<u>Group Repeat</u>
	0270		Segment Group 6: RFF-DTM-NAD-MOA	C		9
22	0280	RFF	Reference	M	1	
23	0290	DTM	Date/Time/Period	C	1	
24	0300	NAD	Name and Address	C	9	
26	0310	MOA	Monetary Amount	C	1	
	0320		Segment Group 7: LIN-DIM-QTY-FTX-SG8-SG9-SG10	C		999
28	0330	LIN	Line Item	M	1	
29	0340	DIM	Dimensions	C	1	
30	0350	QTY	Quantity	C	1	
31	0360	FTX	Free Text	C	9	
	0370		Segment Group 8: DAM-COD	C		1

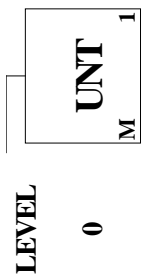
34	0380	DAM	Damage	M	1
36	0390	COD	Component Details	C	1
	0400		Segment Group 9: RTE-QTY	C	9
38	0410	RTE	Rate Details	M	1
39	0420	QTY	Quantity	M	1
	0430		Segment Group 10: NAD-SG11	C	9
41	0440	NAD	Name and Address	M	1
	0450		Segment Group 11: MOA-TAX	M	9
44	0460	MOA	Monetary Amount	M	1
45	0470	TAX	Duty/Tax/Fee Details	C	1

Summary Section:

<u>Page No.</u>	<u>Pos. No.</u>	<u>Seg. ID</u>	<u>Name</u>	<u>Req. Des.</u>	<u>Max.Use</u>	<u>Group Repeat</u>
46	0490	CNT	Control Total	C	9	
47	0500	UNT	Message Trailer	M	1	







Segment: UNH Message Header
Position: 0010
Group:
Level: 0
Usage: Mandatory
Max Use: 1
Purpose: A service segment starting and uniquely identifying a message. The message type code for the Equipment damage and repair estimate message is DESTIM.
 Note: Equipment damage and repair estimate messages conforming to this document must contain the following data in segment UNH, composite S009:
 Data element 0065 DESTIM 0052 D 0054 96B
 0051 UN
Notes: *A service segment starting and uniquely identifying the message and indication the type of message.*

Example:
UNH+0001+DESTIM:D:96B:UN:CON10'

Data Element Summary

User	Data	Component		
<u>Attribute</u>	<u>Element</u>	<u>Element</u>	<u>Name</u>	<u>Attributes</u>
M	0062		MESSAGE REFERENCE NUMBER	M an..14
			<i>Sender's assigned number unique for each message</i>	
M	S009		MESSAGE IDENTIFIER	M
M		0065	Message type identifier	M an..6
			<i>DESTIM Equipment damage and repair estimate message</i>	
M		0052	Message type version number	M an..3
			<i>D Draft version</i>	
M		0054	Message type release number	M an..3
			<i>96B Release 1996 - B</i>	
M		0051	Controlling agency	M an..2
			<i>UN UN/ECE/TRADE/WP.4</i>	
O		0057	Association assigned code	C an..6
			<i>CON10 (Concord EDI Group Guidelines Verion 1.0)</i>	
O	0068		COMMON ACCESS REFERENCE	C an..35
O	S010		STATUS OF THE TRANSFER	C
M		0070	Sequence message transfer number	M n..2
O		0073	First/last sequence message transfer indication	C a1

Segment: **BGM** Beginning of Message
Position: 0020
Group:
Level: 0
Usage: Mandatory
Max Use: 1
Purpose: A segment to indicate the beginning of a message and to transmit identifying number and type of message.
Notes: *A segment to indicate the beginning of the message and to transmit type of document/message and the function of the message.*

Example:
BGM+29+8888+9+AB'

Data Element Summary

User Attribute	Data Element	Component Element	Name	Attributes
R	C002		DOCUMENT/MESSAGE NAME	C
O		1001	Document/message name, coded	C an..3
<i>Note: The DE1001 codes are from D.97A directory.</i>				
		106	Transport Equipment Damage Report (Non-costed estimate)	
		107	Transport Equipment M&R Work authorization (Costed estimate)	
		123	Transport Equipment M&R Work Authorization	
		137	Transport Equipment Survey Order	
		138	Transport Equipment Survey & Order Response	
		143	Transport Equipment Maintenance & Repair Notice	
X		1131	Code list qualifier	C an..3
X		3055	Code list responsible agency, coded	C an..3
X		1000	Document/message name	C an..35
R	C106		DOCUMENT/MESSAGE IDENTIFICATION	C
R		1004	Document/message number	C an..35
<i>Sender's Unique Reference Number</i>				
X		1056	Version	C an..9
X		1060	Revision number	C an..6
O	1225		MESSAGE FUNCTION, CODED	C an..3
		1	Cancellation	
		5	Replace	
		9	Original	
O	4343		RESPONSE TYPE, CODED	C an..3
		AB	Message acknowledgement	

Segment: **DTM** Date/Time/Period
Position: 0030
Group:
Level: 1
Usage: Mandatory
Max Use: 9
Purpose: A segment to indicate date and time of the event being reported or requested by the message.
Notes: *To specify date and /or times relating to the message.*

Example:
DTM+500:201402211515:203'

Data Element Summary

<u>User</u>	<u>Data</u>	<u>Component</u>	<u>Name</u>	<u>Attributes</u>
<u>Attribute</u>	<u>Element</u>	<u>Element</u>		
M	C507		DATE/TIME/PERIOD	M
M		2005	Date/time/period qualifier	M an..3
			137 Document/message date/time	
			160 Authorization date	
			500 Original Estimate Creation Date	
			Official code in D.98A (445: Original estimate date)	
			501 Revised Estimate Created Date	
			Official code in D.98A (446: Revised estimate date)	
			T21 On-hire Survey Date	
			Official code in D.98B (502: On hire survey date)	
			T22 Off-hire Survey Date	
			Official code in D.98B (500: Off-hire survey date)	
			T23 In-service Survey Date	
			Official code in D.98B (501: In service survey date)	
			T24 Production Inspection Date	
			Official code in D.98B (503: Production inspection date)	
R		2380	Date/time/period	C an..35
			Local Dae/time	
R		2379	Date/time/period format qualifier	C an..3
			102 CCYYMMDD	
			203 CCYYMMDDHHMM	
			303 CCYYMMDDHHMMZZZ	

Segment: **CUX** Currencies
Position: 0050
Group:
Level: 1
Usage: Conditional (Optional)
Max Use: 9
Purpose: A segment to specify various currencies associated with the message such as labor currency, material currency and Damage Protection Plan currency.
Notes: *To specify currencies relating to the whole message, such as labor currency, material currency and damage protection plan currency.*

Example:
CUX+5:USD'

Data Element Summary

<u>User</u>	<u>Data</u>	<u>Component</u>	<u>Name</u>	<u>Attributes</u>
<u>Attribute</u>	<u>Element</u>	<u>Element</u>		
R	C504		CURRENCY DETAILS	C
M		6347	Currency details qualifier	M an..3
		5	Calculation base currency	
R		6345	Currency, coded	C an..3
			3-digits ISO currency code, per ISO 4217	
X		6343	Currency qualifier	C an..3
X		6348	Currency rate base	C n..4
X	C504		CURRENCY DETAILS	C
X		6347	Currency details qualifier	M an..3
X		6345	Currency, coded	C an..3
X		6343	Currency qualifier	C an..3
X		6348	Currency rate base	C n..4
X	5402		RATE OF EXCHANGE	C n..12
X	6341		CURRENCY MARKET EXCHANGE, CODED	C an..3

Segment: **RFF** Reference
Position: 0060
Group:
Level: 1
Usage: Conditional (Required)
Max Use: 9
Purpose: A segment indicating a reference number applicable to the entire estimate, such as customer reference, lease number, etc.
Notes: *To specify a reference pertaining to the whole message.*

Examples:
RFF+TES:SFO1RSFO1R960818E'
RFF+TEL:S991234'

Data Element Summary

<u>User</u>	<u>Data</u>	<u>Component</u>	<u>Name</u>	<u>Attributes</u>
<u>Attribute</u>	<u>Element</u>	<u>Element</u>		
M	C506		REFERENCE	M
M		1153	Reference qualifier	M an..3
			ABZ Vehicle licence number	
			AX authorization Number	
			<i>Official code in D.98B (APV: Authorisation for repair reference)</i>	
			CN Carrier's reference number	
			CT Contract number	
			CV Container operators reference number	
			ER Container/equipment receipt number	
			SQ Container sequence number	
			TEL Equipment Owner/Lessor Reference Number	
			<i>Official code in D.98B (APC: Equipment owner reference number)</i>	
			TES Estimate Number (Min. requirement)	
			<i>Official code in D.98B (ABF: Repair estimate number)</i>	
			VT Motor vehicle identification number	
R		1154	Reference number	C an..35
			<i>Reference number</i>	
X		1156	Line number	C an..6
X		4000	Reference version number	C an..35

Segment: **FTX** Free Text
Position: 0070
Group:
Level: 1
Usage: Conditional (Optional)
Max Use: 9
Purpose: A segment to specify free form or processable supplementary information (such as coverage of equipment under an Approved Continuous Examination Program [ACEP] complying with the International Convention for Safe Containers [CSC]) that applies to the entire message.

Notes: *A segment to transmit additional general information pertaining to the estimate.*

Example:

FTX+AAI+++PLEASE RESPOND BY FRIDAY'

Data Element Summary

<u>User Attribute</u>	<u>Data Element</u>	<u>Component Element</u>	<u>Name</u>	<u>Attributes</u>
M	4451		TEXT SUBJECT QUALIFIER	M an..3
		AAI	General information	
X	4453		TEXT FUNCTION, CODED	C an..3
X	C107		TEXT REFERENCE	C
X		4441	Free text identification	M an..17
X		1131	Code list qualifier	C an..3
X		3055	Code list responsible agency, coded	C an..3
O	C108		TEXT LITERAL	C
M		4440	Free text	M an..70
			<i>Free Text (1 line minimum)</i>	
O		4440	Free text	C an..70
O		4440	Free text	C an..70
O		4440	Free text	C an..70
O		4440	Free text	C an..70
X	3453		LANGUAGE, CODED	C an..3

Group: **EQD** Segment Group 1: Equipment Details
Position: 0080
Group:
Level: 1
Usage: Mandatory
Max Use: 1
Purpose: A group of segments to identify equipment-related data, including equipment number, type, size, etc.

				Segment Summary		
User	Pos.	Seg.		Req.	Max.	
<u>Attribute</u>	<u>No.</u>	<u>ID</u>	<u>Name</u>	<u>Des.</u>	<u>Use</u>	<u>Repeat</u>
M	0090	EQD	Equipment Details	M	1	

Segment: **EQD** Equipment Details
Position: 0090 (Trigger Segment)
Group: Segment Group 1 (Equipment Details) Mandatory
Level: 1
Usage: Mandatory
Max Use: 1
Purpose: A segment to specify equipment-related data, including equipment number, type, size, etc.
Notes: *To identify a unit and specify container or equipment details.*

Example:

EQD+CN+MLCU9106548+4320:102:5'

Data Element Summary

<u>User</u>	<u>Data</u>	<u>Component</u>	<u>Name</u>	<u>Attributes</u>
<u>Attribute</u>	<u>Element</u>	<u>Element</u>		
M	8053		EQUIPMENT QUALIFIER	M an..3
			<i>CH Chassis</i>	
			<i>CN Container</i>	
			<i>RG Reefer generator</i>	
			<i>SW Swap body</i>	
			<i>TE Trailer</i>	
R	C237		EQUIPMENT IDENTIFICATION	C
R		8260	Equipment identification number	C an..17
			<i>Equipment Unit Number</i>	
X		1131	Code list qualifier	C an..3
X		3055	Code list responsible agency, coded	C an..3
X		3207	Country, coded	C an..3
R	C224		EQUIPMENT SIZE AND TYPE	C
R		8155	Equipment size and type identification	C an..10
			<i>ISO Size & Type Code</i>	
R		1131	Code list qualifier	C an..3
			<i>102 Size and type</i>	
R		3055	Code list responsible agency, coded	C an..3
			<i>5 ISO (International Organization for Standardization)</i>	
X		8154	Equipment size and type	C an..35
X	8077		EQUIPMENT SUPPLIER, CODED	C an..3
X	8249		EQUIPMENT STATUS, CODED	C an..3
O	8169		FULL/EMPTY INDICATOR, CODED	C an..3
			<i>4 Empty</i>	
			<i>5 Full</i>	
			<i>6 No volume available</i>	

Group: **NAD** Segment Group 2: Name and Address
Position: 0120
Group:
Level: 1
Usage: Conditional (Required)
Max Use: 9
Purpose: A group of segments to identify parties, such as owners, lessors, users, lessees, equipment depots, agents, etc., sending or receiving the estimate. The group also summarizes responsibility for repair costs by party, with a detailed enumeration and allocation of such costs, including labor, tax on labor, materials, tax on materials, subtotal labor and materials, subtotal tax, and grand totals for the estimate.
Notes: *Identifies the parties such as owners/lessors/lessees, etc., total cost of repairs and summarizes responsibility for repair cost by party.*

Segment Summary						
User	Pos.	Seg.		Req.	Max.	
<u>Attribute</u>	<u>Group:</u>	<u>ID</u>	<u>Name</u>	<u>Des.</u>	<u>Use</u>	<u>Repeat</u>
M	0130	NAD	Name and Address	M	1	
O	0140	MOA	Monetary Amount	C	9	
	0150		Segment Group 3: Contact Information	C	9	

Segment: **NAD** Name and Address
Position: 0130 (Trigger Segment)
Group: Segment Group 2 (Name and Address) Conditional (Required)
Level: 1
Usage: Mandatory
Max Use: 1
Purpose: A segment to identify the name, address, and function of parties to whom the estimate is sent.
Notes: *A segment to identify parties involved in sending and receiving the estimate.*

Example:
 NAD+MS+USRCHCCIA:160:20'
 NAD+EO+USFOMLCA:160:20'
 NAD+CF+MEAU:172:16'

Data Element Summary

<u>User Attribute</u>	<u>Data Element</u>	<u>Component Element</u>	<u>Name</u>	<u>Attributes</u>
M	3035		PARTY QUALIFIER	M an..3
		10	Lessee's survey company <i>Offcil code in D.98A (OH: Lessee's surveyor)</i>	
		20	Lessor's survey company <i>Offcil code in D.98A (OG: Owner or lessor's surveyor)</i>	
		CA	Carrier	
		CF	Container operator/lessee	
		CG	Carrier's agent	
		EO	Owner of equipment	
		IO	Insurance company	
		IV	Invoicee	
		MF	Manufacturer of goods	
		MS	Document/message issuer/sender	
		RY	Repair facility (phisical location of unit) <i>Offcil code in D.98A (OD: Equipment repair party)</i>	
		TP	Third party <i>Offcil code in D.98A (OJ: Third party)</i>	
O	C082		PARTY IDENTIFICATION DETAILS	C
			<i>Use the following combination codes in 1131/3055 to qualify the code values in data element 3039.</i>	
			BIC	
			1131 160 (Party ID)	
			3055 20 (BIC)	
			Duns+4	
			1131 100 (Enhanced Party ID)	
			3055 Duns	
			Carrier code	
			1131 172 (Carrier Code)	
			3055 16 (NMFCA, US issuer of SCAC code)	
M		3039	Party id. identification	M an..35
			<i>ID code value</i>	
R		1131	Code list qualifier	C an..3
			100 Enhanced party identification	
			160 Party identification	

		172	Carrier code		
R		3055	Code list responsible agency, coded	C	an..3
		16	DUNS (Dun & Bradstreet)		
		20	BIC (Bureau International des Containeurs)		
		166	US, National Motor Freight Classification Association		
		ZZZ	Mutually defined		
X	C058		NAME AND ADDRESS	C	
X		3124	Name and address line	M	an..35
X		3124	Name and address line	C	an..35
X		3124	Name and address line	C	an..35
X		3124	Name and address line	C	an..35
X		3124	Name and address line	C	an..35
X	C080		PARTY NAME	C	
X		3036	Party name	M	an..35
X		3036	Party name	C	an..35
X		3036	Party name	C	an..35
X		3036	Party name	C	an..35
X		3036	Party name	C	an..35
X		3045	Party name format, coded	C	an..3
X	C059		STREET	C	
X		3042	Street and number/p.o. box	M	an..35
X		3042	Street and number/p.o. box	C	an..35
X		3042	Street and number/p.o. box	C	an..35
X		3042	Street and number/p.o. box	C	an..35
X	3164		CITY NAME	C	an..35
X	3229		COUNTRY SUB-ENTITY IDENTIFICATION	C	an..9
X	3251		POSTCODE IDENTIFICATION	C	an..9
X	3207		COUNTRY, CODED	C	an..3

Segment: **MOA** Monetary Amount
Position: 0140
Group: Segment Group 2 (Name and Address) Conditional (Required)
Level: 2
Usage: Conditional (Optional)
Max Use: 9
Purpose: A segment used to indicate labor, materials, and tax cost attributable to a party pertaining to the entire estimate.

Notes: *To identify costs used within the estimate.*

Example:
 MOA+259:100.00:USD'
 MOA+402:100:USD'
 MOA+259:117.30:USD'

Data Element Summary

<u>User Attribute</u>	<u>Data Element</u>	<u>Component Element</u>	<u>Name</u>	<u>Attributes</u>
M	C516		MONETARY AMOUNT	M
M		5025	Monetary amount type qualifier	M an..3
			124 Tax amount	
			125 Taxable amount	
			165 Adjustment amount	
			185 Labor cost	
			186 Material cost	
			187 Other cost	
			259 Total charges	
			400 Labor sales tax	
			<i>Official code in D.98A (367: Labour sales tax)</i>	
			401 Material sales tax	
			<i>Official code in D.98A (368: Material sales tax)</i>	
			402 Insurance amount	
			<i>Official code name of '67' is amended in D.98A (From 'Insurance' to 'Insurance amount')</i>	
R		5004	Monetary amount	C n..18
			<i>Amount</i>	
O		6345	Currency, coded	C an..3
			<i>As per ISO 4217</i>	
X		6343	Currency qualifier	C an..3
X		4405	Status, coded	C an..3

Group: **CTA** Segment Group 3: Contact Information
Position: 0150
Group: Segment Group 2 (Name and Address) Conditional (Required)
Level: 2
Usage: Conditional (Optional)
Max Use: 9
Purpose: A group of segments to identify individuals or departments to whose attention the estimate will be directed.

				Segment Summary		
User	Pos.	Seg.		Req.	Max.	
<u>Attribute</u>	<u>No.</u>	<u>ID</u>	<u>Name</u>	<u>Des.</u>	<u>Use</u>	<u>Repeat</u>
M	0160	CTA	Contact Information	M		1

Segment: **CTA** **Contact Information**
Position: 0160 (Trigger Segment)
Group: Segment Group 3 (Contact Information) Conditional (Optional)
Level: 2
Usage: Mandatory
Max Use: 1
Purpose: A segment to identify a person or department to whom communications should be directed.
Notes: *A segment to identify the person or department to whom questions about the message should be directed.*
Example:
IC:JOE'

Data Element Summary

<u>User</u>	<u>Data</u>	<u>Component</u>	<u>Name</u>	<u>Attributes</u>
<u>Attribute</u>	<u>Element</u>	<u>Element</u>		
R	3139		CONTACT FUNCTION, CODED <i>IC Information contact</i>	C an..3
R	C056		DEPARTMENT OR EMPLOYEE DETAILS	C
X		3413	Department or employee identification	C an..17
R		3412	Department or employee <i>Name</i>	C an..35

Segment: UNS Section Control
Position: 0220
Group:
Level: 0
Usage: Mandatory
Max Use: 1
Purpose: A segment to avoid segment collision.

Notes: *Prevent segment collusion between the Group 4 DTM and the Group 5 DTM.*

*Example:
UNS+D'*

Data Element Summary

<u>User</u>	<u>Data</u>	<u>Component</u>	<u>Name</u>	<u>Attributes</u>
<u>Attribute</u>	<u>Element</u>	<u>Element</u>		
M	0081		SECTION IDENTIFIER	M a1
		D		<i>Header/detail section separation</i>

Group: **RFF** Segment Group 6: Reference
Position: 0270
Group:
Level: 1
Usage: Conditional (Optional)
Max Use: 9
Purpose: A group of segments indicating information relating to authorization for repair to proceed and acceptance of responsibility for respective charges for such repairs. The approval number, date, and name and address of the approving party, and the monetary amount authorized are included within the group.

				Segment Summary		
User	Pos.	Seg.		Req.	Max.	
<u>Attribute</u>	<u>No.</u>	<u>ID</u>	<u>Name</u>	<u>Des.</u>	<u>Use</u>	<u>Repeat</u>
M	0280	RFF	Reference	M	1	
O	0290	DTM	Date/Time/Period	C	1	
O	0300	NAD	Name and Address	C	9	
O	0310	MOA	Monetary Amount	C	1	

Segment: **RF** Reference
Position: 0280 (Trigger Segment)
Group: Segment Group 6 (Reference) Conditional (Optional)
Level: 1
Usage: Mandatory
Max Use: 1
Purpose: A segment indicating the authorization number attributable to all or part of the estimate, which is provided by the party.
Notes: *To specify an approval number provided by a party specified in the Group 2 NAD segment.*

Data Element Summary

<u>User</u>	<u>Data</u>	<u>Component</u>	<u>Name</u>	<u>Attributes</u>
<u>Attribute</u>	<u>Element</u>	<u>Element</u>		
M	C506		REFERENCE	M
M		1153	Reference qualifier 32 <i>Approval Reference Number</i>	M an..3
R		1154	Reference number <i>Reference Number</i>	C an..35
X		1156	Line number	C an..6
X		4000	Reference version number	C an..35

Segment: **DTM** Date/Time/Period
Position: 0290
Group: Segment Group 6 (Reference) Conditional (Optional)
Level: 2
Usage: Conditional (Optional)
Max Use: 1
Purpose: A segment indicating the date and time at which the authorization is provided.
Notes: *To specify date and/or times relating to the authorization.*

Data Element Summary

<u>User</u>	<u>Data</u>	<u>Component</u>	<u>Name</u>	<u>Attributes</u>
<u>Attribute</u>	<u>Element</u>	<u>Element</u>		
M	C507		DATE/TIME/PERIOD	M
M		2005	Date/time/period qualifier	M an..3
			400 Approval date	
			<i>Official code in D.98A (444: Approval date)</i>	
R		2380	Date/time/period	C an..35
			<i>Local Date/Time</i>	
R		2379	Date/time/period format qualifier	C an..3
			102 CCYYMMDD	
			203 CCYYMMDDHHMM	
			303 CCYYMMDDHHMMZZZ	

Segment: **NAD** Name and Address
Position: 0300
Group: Segment Group 6 (Reference) Conditional (Optional)
Level: 2
Usage: Conditional (Optional)
Max Use: 9
Purpose: A segment indicating the name and address of the authorizing party.
Notes: *A segment to specify the authorization party.*

Data Element Summary

<u>User</u>	<u>Data</u>	<u>Component</u>	<u>Name</u>	<u>Attributes</u>
<u>Attribute</u>	<u>Element</u>	<u>Element</u>		
M	3035		PARTY QUALIFIER	M an..3
			10 Lessee's survey company <i>Offcil code in D.98A (OH: Lessee's surveyor)</i>	
			20 Lessor's survey company <i>Offcil code in D.98A (OG: Owner or lessor's surveyor)</i>	
			CA Carrier	
			CF Container operator/lessee	
			CG Carrier's agent	
			EO Owner of equipment	
			IO Insurance company	
			MF Manufacturer of goods	
			RY Repair facility <i>Offcil code in D.98A (OD: Equipment repair party)</i>	
			SV Surveyor <i>The following codes of surveyor are officialy listed in D.98A;</i> <i>OG: Owner or lessor's surveyor (Surveyor hired by the owner or lessor of the item.)</i> <i>OH: Lessee's surveyor (Surveyor hired by the lessee of the item.)</i>	
			TP Third party <i>Offcil code in D.98A (OJ: Third party)</i>	
O	C082		PARTY IDENTIFICATION DETAILS	C
			<i>Use the following combination codes in 1131/3055 to qualify the code values in data element 3039.</i>	
			BIC 1131 160 (Party ID) 3055 20 (BIC)	
			Duns+4 1131 100 (Enhanced Party ID) 3055 Duns	
			Carrier code 1131 172 (Carrier Code) 3055 16 (NMFCA, US issuer of SCAC code)	
M		3039	Party id. identification	M an..35
			<i>ID code value</i>	
R		1131	Code list qualifier	C an..3
			100 Enhanced party identification	
			160 Party identification	

		172	Carrier code		
R		3055	Code list responsible agency, coded	C	an..3
		16	DUNS (Dun & Bradstreet)		
		20	BIC (Bureau International des Containeurs)		
		166	US, National Motor Freight Classification Association		
		ZZZ	Mutually defined		
X	C058		NAME AND ADDRESS	C	
X		3124	Name and address line	M	an..35
X		3124	Name and address line	C	an..35
X		3124	Name and address line	C	an..35
X		3124	Name and address line	C	an..35
X		3124	Name and address line	C	an..35
X	C080		PARTY NAME	C	
X		3036	Party name	M	an..35
X		3036	Party name	C	an..35
X		3036	Party name	C	an..35
X		3036	Party name	C	an..35
X		3036	Party name	C	an..35
X		3045	Party name format, coded	C	an..3
X	C059		STREET	C	
X		3042	Street and number/p.o. box	M	an..35
X		3042	Street and number/p.o. box	C	an..35
X		3042	Street and number/p.o. box	C	an..35
X		3042	Street and number/p.o. box	C	an..35
X	3164		CITY NAME	C	an..35
X	3229		COUNTRY SUB-ENTITY IDENTIFICATION	C	an..9
X	3251		POSTCODE IDENTIFICATION	C	an..9
X	3207		COUNTRY, CODED	C	an..3

Segment: **MOA** Monetary Amount
Position: 0310
Group: Segment Group 6 (Reference) Conditional (Optional)
Level: 2
Usage: Conditional (Optional)
Max Use: 1
Purpose: A segment indicating the amount of money authorized to be expended to the account of the authorizing party.

Notes: *To specify the amount authorized.*

Data Element Summary

<u>User</u>	<u>Data</u>	<u>Component</u>	<u>Name</u>	<u>Attributes</u>
<u>Attribute</u>	<u>Element</u>	<u>Element</u>		
M	C516		MONETARY AMOUNT	M
M		5025	Monetary amount type qualifier 7 Agreed charge	M an..3
R		5004	Monetary amount Amount	C n..18
O		6345	Currency, coded As per ISO 4217	C an..3
X		6343	Currency qualifier	C an..3
X		4405	Status, coded	C an..3

Group: **LIN** Segment Group 7: Line Item
Position: 0320
Group:
Level: 1
Usage: Conditional (Dependent)
Max Use: 999
Purpose: A group of segments indicating the type and amount of damage found on the equipment during an inspection, and a description of, and allocation of responsibility for, amount, type, extent, and estimated cost of repairs needed to rectify such damage.
Notes: *Segment is Dependent based on:*
 1. *Required for the estimate*
 2. *Optional if approving in full*
 3. *Required if approving partially*
 4. *Required for damage report*

				Segment Summary		
User	Pos.	Seg.		Req.	Max.	
<u>Attribute</u>	<u>Group:</u> <u>No.</u>	<u>ID</u>	<u>Name</u>	<u>Des.</u>	<u>Use</u>	<u>Repeat</u>
M	0330	LIN	Line Item	M	1	
O	0340	DIM	Dimensions	C	1	
O	0350	QTY	Quantity	C	1	
O	0360	FTX	Free Text	C	9	
	0370		Segment Group 8: Damage	C		1
	0400		Segment Group 9: Rate Details	C		9
	0430		Segment Group 10: Name and Address	C		9

Segment: **LIN** Line Item
Position: 0330 (Trigger Segment)
Group: Segment Group 7 (Line Item) Conditional (Dependent)
Level: 1
Usage: Mandatory
Max Use: 1
Purpose: A segment indicating a number for each damage line-item in the message. The line number corresponding to a damage and repair will remain constant throughout all versions of the message, so that subsequent versions of the repair estimate may be compared to previous versions. Items to be deleted or altered in subsequent versions may also be highlighted in this segment.

Notes: *To identify a specific item needing maintenance or repair.*

Examples:
 LIN+1'
 LIN+2'

Data Element Summary

<u>User</u>	<u>Data</u>	<u>Component</u>	<u>Name</u>	<u>Attributes</u>
<u>Attribute</u>	<u>Element</u>	<u>Element</u>		
R	1082		LINE ITEM NUMBER	C n..6
			<i>Sequential number</i>	
O	1229		ACTION REQUEST/NOTIFICATION, CODED	C an..3
			1 <i>Added</i>	
			2 <i>Deleted</i>	
X	C212		ITEM NUMBER IDENTIFICATION	C
X		7140	Item number	C an..35
X		7143	Item number type, coded	C an..3
X		1131	Code list qualifier	C an..3
X		3055	Code list responsible agency, coded	C an..3
X	C829		SUB-LINE INFORMATION	C
X		5495	Sub-line indicator, coded	C an..3
X		1082	Line item number	C n..6
X	1222		CONFIGURATION LEVEL	C n..2
X	7083		CONFIGURATION, CODED	C an..3

Segment: **DIM** Dimensions
Position: 0340
Group: Segment Group 7 (Line Item) Conditional (Dependent)
Level: 2
Usage: Conditional (Optional)
Max Use: 1
Purpose: A segment used to indicate the dimensions of the repaired area.
Notes: *To specify dimensions of the repair area.*

Data Element Summary

<u>User</u>	<u>Data</u>	<u>Component</u>	<u>Name</u>	<u>Attributes</u>
<u>Attribute</u>	<u>Element</u>	<u>Element</u>		
M	6145		DIMENSION QUALIFIER	M an..3
			<i>10 External equipment dimension</i>	
M	C211		DIMENSIONS	M
M		6411	Measure unit qualifier	M an..3
			<i>Refer to UN/Recommendation #20. 'CNT(Centimeters)' and 'INH(Inches)' are recommendable.</i>	
D		6168	Length dimension	C n..15
			<i>Length</i>	
D		6140	Width dimension	C n..15
			<i>Width</i>	
D		6008	Height dimension	C n..15
			<i>Height</i>	

Segment: **QTY** Quantity
Position: 0350
Group: Segment Group 7 (Line Item) Conditional (Dependent)
Level: 2
Usage: Conditional (Optional)
Max Use: 1
Purpose: A segment used to indicate the number of repairs of the identical type to be performed.
Notes: *To specify the number of repairs of a particular type.*

Example:
QTY+1:5'

Data Element Summary

<u>User</u>	<u>Data</u>	<u>Component</u>	<u>Name</u>	<u>Attributes</u>
<u>Attribute</u>	<u>Element</u>	<u>Element</u>		
M	C186		QUANTITY DETAILS	M
M		6063	Quantity qualifier	M an..3
			207 <i>Labour hours</i>	
M		6060	Quantity	M n..15
			<i>Number</i>	
X		6411	Measure unit qualifier	C an..3

Segment: **FTX** Free Text
Position: 0360
Group: Segment Group 7 (Line Item) Conditional (Dependent)
Level: 2
Usage: Conditional (Optional)
Max Use: 9
Purpose: A segment to specify free form or processable supplementary information (such as an indication of conjunctive or alternate repair) that apply to a single damage and repair line item.

Notes: *To specify supplementary information relating to a repair item, such as conjunctive or alternative repairs.*

Data Element Summary

<u>User Attribute</u>	<u>Data Element</u>	<u>Component Element</u>	<u>Name</u>	<u>Attributes</u>
M	4451		TEXT SUBJECT QUALIFIER	M an..3
		AAI	General information <i>(Free text)</i>	
		ABS	Additional conditions <i>(Current condition)</i>	
X	4453		TEXT FUNCTION, CODED	C an..3
D	C107		TEXT REFERENCE	C
			<i>Required if DE 4451 equals 'ABS'</i>	
M		4441	Free text identification	M an..17
			<i>Following codes are prepared by the group.</i>	
			63 <i>To be inspected</i>	
			65 <i>Requires pre-trip</i>	
			66 <i>Requires steam clean</i>	
			67 <i>Clean</i>	
			68 <i>Dirty</i>	
			71 <i>Free store</i>	
			79 <i>Set aside for sale</i>	
			80 <i>Sold and awaiting delivery</i>	
			81 <i>Prepared for hides</i>	
			82 <i>Prepared for good quality</i>	
			83 <i>Prepared for bulkhead</i>	
			84 <i>Prepared for quarantine inspection</i>	
			85 <i>Pretrip/steamcleaned reefer</i>	
			87 <i>Steamcleaned insulated</i>	
			88 <i>Steamcleaned general</i>	
			89 <i>Steamcleaned tank</i>	
			90 <i>Sueveyed</i>	
			91 <i>Repaired</i>	
			93 <i>Prepared for milkpowder</i>	
			94 <i>Prepared for rice</i>	
			95 <i>Prepared for cotton</i>	
			99 <i>Prepared for hay</i>	
			100 <i>Prepared with lastic lining</i>	
			101 <i>Prepared with vanished floor</i>	
			102 <i>Clip-on unit required</i>	
			103 <i>Generator required</i>	
			104 <i>Vent open</i>	

		105	<i>Vent closed</i>		
		111	<i>CSC problem</i>		
		113	<i>Ownership problem</i>		
		115	<i>For fumigation</i>		
X		1131	Code list qualifier	C	an..3
O		3055	Code list responsible agency, coded	C	an..3
		<i>ZZZ</i>	<i>Mutually defined</i>		
D	C108		TEXT LITERAL	C	
M		4440	Free text	M	an..70
			<i>Free Text (1 line minimum)</i>		
O		4440	Free text	C	an..70
O		4440	Free text	C	an..70
O		4440	Free text	C	an..70
O		4440	Free text	C	an..70
X	3453		LANGUAGE, CODED	C	an..3

Group: **DAM** Segment Group 8: Damage
Position: 0370
Group: Segment Group 7 (Line Item) Conditional (Dependent)
Level: 2
Usage: Conditional (Optional)
Max Use: 1
Purpose: A group of segments describing damages, involved components (including material for such components), and action to be taken due to presence of the damage (such as repair).
Notes: *To list damage details and materials needed to make repair.*

Segment Summary

User	Pos.	Seg.	Req.	Max.
<u>Attribute</u>	<u>No.</u>	<u>ID</u>	<u>Des.</u>	<u>Use</u>
M	0380	DAM	Damage	1
O	0390	COD	Component Details	1

Segment: **DAM** Damage
Position: 0380 (Trigger Segment)
Group: Segment Group 8 (Damage) Conditional (Optional)
Level: 2
Usage: Mandatory
Max Use: 1
Purpose: A segment to specify equipment damages, such as location, type, and size of damage; and repair or other action taken.
Notes: *To specify equipment damage location, size of damage and repair or other action taken.*

Example:

DAM+I++DT++EZLN:ZZZ:5++GS:ZZZ:5'

Data Element Summary

<u>User Attribute</u>	<u>Data Element</u>	<u>Component Element</u>	<u>Name</u>	<u>Attributes</u>
M	7493		DAMAGE DETAILS QUALIFIER	M an..3
R	C821		TYPE OF DAMAGE	C
R		7501	Type of damage, coded	C an..3
			<i>Code as per ISO 9897, Annex D, Appendix D</i>	
O		1131	Code list qualifier	C an..3
			<i>ZZZ Mutually defined</i>	
O		3055	Code list responsible agency, coded	C an..3
			<i>5 ISO (International Organization for Standardization)</i>	
O		7500	Type of damage	C an..35
			<i>Type of damage, Free text</i>	
R	C822		DAMAGE AREA	C
R		7503	Damage area identification	C an..4
			<i>Code as per ISO 9897, Annex C, Appendix C</i>	
O		1131	Code list qualifier	C an..3
			<i>ZZZ Mutually defined</i>	
O		3055	Code list responsible agency, coded	C an..3
			<i>5 ISO (International Organization for Standardization)</i>	
O		7502	Damage area	C an..35
			<i>Damage area, Free text</i>	
R	C825		DAMAGE SEVERITY	C
R		7509	Damage severity, coded	C an..3
			<i>Code as per ISO 9897, Annex G.3, Appendix E</i>	
O		1131	Code list qualifier	C an..3
			<i>ZZZ Mutually defined</i>	
O		3055	Code list responsible agency, coded	C an..3
			<i>5 ISO (International Organization for Standardization)</i>	
O		7508	Damage severity	C an..35
			<i>Damage severity, Free text</i>	
O	C826		ACTION	C
R		1229	Action request/notification, coded	C an..3
			<i>Code as per ISO 9897, Annex F, Appendix F</i>	
O		1131	Code list qualifier	C an..3
			<i>ZZZ Mutually defined</i>	
O		3055	Code list responsible agency, coded	C an..3
			<i>5 ISO (International Organization for Standardization)</i>	
O		1228	Action request/notification	C an..35

Segment: **COD** Component Details
Position: 0390
Group: Segment Group 8 (Damage) Conditional (Optional)
Level: 3
Usage: Conditional (Optional)
Max Use: 1
Purpose: A segment to specify components involved in the repair, by type of material.

Notes: *Detailed description of the componet required.*

Example:

COD+PSC:ZZZ:5+SK:ZZZ:5'

Data Element Summary

<u>User Attribute</u>	<u>Data Element</u>	<u>Component Element</u>	<u>Name</u>	<u>Attributes</u>
R	C823		TYPE OF UNIT/COMPONENT	C
R		7505	Type of unit/component, coded <i>Code as per ISO 9897, Annex K&L, Appendix G</i>	C an..3
O		1131	Code list qualifier <i>ZZZ Mutually defined</i>	C an..3
O		3055	Code list responsible agency, coded <i>5 ISO (International Organization for Standardization)</i>	C an..3
O		7504	Type of unit/component <i>Type of component, Free text</i>	C an..35
R	C824		COMPONENT MATERIAL	C
R		7507	Component material, coded <i>Code as per ISO 9897, Annex E, Appendix H</i>	C an..3
O		1131	Code list qualifier <i>ZZZ Mutually defined</i>	C an..3
O		3055	Code list responsible agency, coded <i>5 ISO (International Organization for Standardization)</i>	C an..3
O		7506	Component material <i>Component material, Free text</i>	C an..35

Group: **RTE** Segment Group 9: Rate Details
Position: 0400
Group: Segment Group 7 (Line Item) Conditional (Dependent)
Level: 2
Usage: Conditional (Optional)
Max Use: 9
Purpose: A group of segments indicating the labor rate per hour (or other unit time), and the number of hours (or time units) needed to perform the repair.
Notes: *To specify rates and charges.*

Segment Summary

User	Pos.	Seg.	Req.	Max.
<u>Attribute</u>	<u>No.</u>	<u>ID</u>	<u>Des.</u>	<u>Use</u>
M	0410	RTE	Rate Details	1
M	0420	QTY	Quantity	1

Segment: **RTE** Rate Details
Position: 0410 (Trigger Segment)
Group: Segment Group 9 (Rate Details) Conditional (Optional)
Level: 2
Usage: Mandatory
Max Use: 1
Purpose: A segment indicating the labor rate per unit of time (e.g. hour) at which the repair will be charged.
Notes: *To specify the labor rate per unit of time at which the repair will be charged.*

Examples:
RTE+2:39.00'
RTE+2:39'

Data Element Summary

<u>User Attribute</u>	<u>Data Element</u>	<u>Component Element</u>	<u>Name</u>	<u>Attributes</u>
M	C128		RATE DETAILS	M
M		5419	Rate type qualifier	M an..3
			2 Charge rate	
M		5420	Rate per unit	M n..15
			Rate	
X		5284	Unit price basis	C n..9
X		6411	Measure unit qualifier	C an..3

Segment: **QTY** Quantity
Position: 0420
Group: Segment Group 9 (Rate Details) Conditional (Optional)
Level: 3
Usage: Mandatory
Max Use: 1
Purpose: A segment indicating the number of time units (e.g. hours) of labor to be charged for the repair.

Notes: *To specify te number of time units of labor at which te repair will be charged.*

Example:
QTY+1:4:6:HUR'
QTY1+0.25'

Data Element Summary

<u>User Attribute</u>	<u>Data Element</u>	<u>Component Element</u>	<u>Name</u>	<u>Attributes</u>
M	C186		QUANTITY DETAILS	M
M		6063	Quantity qualifier <i>1 Discrete quantity</i>	M an..3
M		6060	Quantity <i>Time required.</i>	M n..15
R		6411	Measure unit qualifier <i>Refer to UNECE Recommendatin #20. 'HUR(Hour)', 'DAY(Day)' and 'II(Flat rate)' are recommendable. Note: 'II' is not listed in the Recomendation #20.</i>	C an..3

Group: **NAD** **Segment Group 10: Name and Address**
Position: 0430
Group: Segment Group 7 (Line Item) Conditional (Dependent)
Level: 2
Usage: Conditional (Optional)
Max Use: 9
Purpose: A group of segments indicating parties responsible for the repair described, and the allocation of charges, broken down category, applicable to such repairs, including any tax or discount.

				Segment Summary		
User	Pos.	Seg.		Req.	Max.	
<u>Attribute</u>	<u>No.</u>	<u>ID</u>	<u>Name</u>	<u>Des.</u>	<u>Use</u>	<u>Repeat</u>
M	0440	NAD	Name and Address	M	1	
	0450		Segment Group 11: Monetary Amount	M	9	

Segment: **NAD** Name and Address
Position: 0440 (Trigger Segment)
Group: Segment Group 10 (Name and Address) Conditional (Optional)
Level: 2
Usage: Mandatory
Max Use: 1
Purpose: A segment indicating the name and address of the party to whose account the repair will be charged.

Notes: *To specify the party to whose account the repair will be charged.*

Example:

NAD+CF+MEAU:172:16'

NAD+EO+USFOMLCA:160:20'

Data Element Summary

<u>User Attribute</u>	<u>Data Element</u>	<u>Component Element</u>	<u>Name</u>	<u>Attributes</u>
M	3035		PARTY QUALIFIER	M an..3
		10	Lessee's survey company	
			<i>Offcil code in D.98A (OH: Lessee's surveyor)</i>	
		20	Lessor's survey company	
			<i>Offcil code in D.98A (OG: Owner or lessor's surveyor)</i>	
		AG	Agent/representative	
		CA	Carrier	
		CF	Container operator/lessee	
		CG	Carrier's agent	
		EO	Owner of equipment	
		IO	Insurance company	
		MF	Manufacturer of goods	
		RY	Repair facility	
			<i>Offcil code in D.98A (OD: Equipment repair party)</i>	
		TP	Third party	
			<i>Offcil code in D.98A (OJ: Third party)</i>	
R	C082		PARTY IDENTIFICATION DETAILS	C
			<i>Use the following combination codes in 1131/3055 to qualify the code values in data element 3039.</i>	
			BIC	
			1131 160 (Party ID)	
			3055 20 (BIC)	
			Duns+4	
			1131 100 (Enhanced Party ID)	
			3055 Duns	
			Carrier code	
			1131 172 (Carrier Code)	
			3055 16 (NMFCA, US issuer of SCAC code)	
M		3039	Party id. identification	M an..35
			ID code value	
R		1131	Code list qualifier	C an..3
			100 Enhanced party identification	
			160 Party identification	
			172 Carrier code	

R		3055	Code list responsible agency, coded	C	an..3
		16	<i>DUNS (Dun & Bradstreet)</i>		
		20	<i>BIC (Bureau International des Containeurs)</i>		
		166	<i>US, National Motor Freight Classification Association</i>		
X	C058		NAME AND ADDRESS	C	
X		3124	Name and address line	M	an..35
X		3124	Name and address line	C	an..35
X		3124	Name and address line	C	an..35
X		3124	Name and address line	C	an..35
X		3124	Name and address line	C	an..35
X	C080		PARTY NAME	C	
X		3036	Party name	M	an..35
X		3036	Party name	C	an..35
X		3036	Party name	C	an..35
X		3036	Party name	C	an..35
X		3036	Party name	C	an..35
X		3045	Party name format, coded	C	an..3
X	C059		STREET	C	
X		3042	Street and number/p.o. box	M	an..35
X		3042	Street and number/p.o. box	C	an..35
X		3042	Street and number/p.o. box	C	an..35
X		3042	Street and number/p.o. box	C	an..35
X	3164		CITY NAME	C	an..35
X	3229		COUNTRY SUB-ENTITY IDENTIFICATION	C	an..9
X	3251		POSTCODE IDENTIFICATION	C	an..9
X	3207		COUNTRY, CODED	C	an..3

Group: **MOA** **Segment Group 11: Monetary Amount**
Position: 0450
Group: Segment Group 10 (Name and Address) Conditional (Optional)
Level: 3
Usage: Mandatory
Max Use: 9
Purpose: A group of segments indicating the monetary amount of charges for, the repair, and any tax and or discounts and surcharges associated with labor and or materials charges for the repair.
Notes: *To specify charges for the repair.*

				Segment Summary		
User	Pos.	Seg.		Req.	Max.	
<u>Attribute</u>	<u>No.</u>	<u>ID</u>	<u>Name</u>	<u>Des.</u>	<u>Use</u>	<u>Repeat</u>
M	0460	MOA	Monetary Amount	M		1
O	0470	TAX	Duty/Tax/Fee Details	C		1

Segment: **MOA** Monetary Amount
Position: 0460 (Trigger Segment)
Group: Segment Group 11 (Monetary Amount) Mandatory
Level: 3
Usage: Mandatory
Max Use: 1
Purpose: A segment indicating the monetary amount of labour, materials, or tax applicable to the repair for which the indicated party is responsible.
Notes: *To specify the amount to be paid by each of the indicated parties.*

Examples:
MOA+185:9.75:USD'
MOA+186:0.5:USD'
MOA+401:0.04:USD'

Data Element Summary

<u>User</u>	<u>Data</u>	<u>Component</u>	<u>Name</u>	<u>Attributes</u>
<u>Attribute</u>	<u>Element</u>	<u>Element</u>		
M	C516		MONETARY AMOUNT	M
M		5025	Monetary amount type qualifier	M an..3
			124 Tax amount	
			125 Taxable amount	
			165 Adjustment amount	
			185 Labor cost	
			186 Material cost	
			187 Other cost	
			259 Total charges	
			400 Labour sales tax	
			401 Material sales tax	
			402 Insurance amount	
			GST Goods and service tax	
			PST State/Province sales tax	
R		5004	Monetary amount	C n..18
			Amount	
O		6345	Currency, coded	C an..3
			As per ISO 4217	
X		6343	Currency qualifier	C an..3
X		4405	Status, coded	C an..3

Segment: **TAX** Duty/Tax/Fee Details
Position: 0470
Group: Segment Group 11 (Monetary Amount) Mandatory
Level: 4
Usage: Conditional (Optional)
Max Use: 1
Purpose: A segment indicating the rate of tax applicable to the associated labor or materials charges.
Notes: *To specify the ratre of tax applicable to the associated labor or materials charge.*

Example:
TAX+7+LOC+:::8.5'

Data Element Summary

<u>User</u>	<u>Data</u>	<u>Component</u>	<u>Name</u>	<u>Attributes</u>
<u>Attribute</u>	<u>Element</u>	<u>Element</u>		
M	5283		DUTY/TAX/FEE FUNCTION QUALIFIER	M an..3
		7	<i>Tax</i>	
R	C241		DUTY/TAX/FEE TYPE	C
X		5153	Duty/tax/fee type, coded	C an..3
X		1131	Code list qualifier	C an..3
X		3055	Code list responsible agency, coded	C an..3
X		5152	Duty/tax/fee type	C an..35
X	C533		DUTY/TAX/FEE ACCOUNT DETAIL	C
X		5289	Duty/tax/fee account identification	M an..6
X		1131	Code list qualifier	C an..3
X		3055	Code list responsible agency, coded	C an..3
O	5286		DUTY/TAX/FEE ASSESSMENT BASIS	C an..15
O	C243		DUTY/TAX/FEE DETAIL	C
X		5279	Duty/tax/fee rate identification	C an..7
X		1131	Code list qualifier	C an..3
X		3055	Code list responsible agency, coded	C an..3
O		5278	Duty/tax/fee rate	C an..17
			<i>Percentage rate</i>	
X		5273	Duty/tax/fee rate basis identification	C an..12
X		1131	Code list qualifier	C an..3
X		3055	Code list responsible agency, coded	C an..3
X	5305		DUTY/TAX/FEE CATEGORY, CODED	C an..3
X	3446		PARTY TAX IDENTIFICATION NUMBER	C an..20

Segment: **CNT** Control Total
Position: 0490
Group:
Level: 1
Usage: Conditional (Optional)
Max Use: 9
Purpose: A segment to provide message control totals.
Notes: *A segment to provide the total monetary amount of the invoice.*

Example:
 CNT+12+217.30'

Data Element Summary

<u>User</u>	<u>Data</u>	<u>Component</u>	<u>Name</u>	<u>Attributes</u>
<u>Attribute</u>	<u>Element</u>	<u>Element</u>		
M	C270		CONTROL	M
M		6069	Control qualifier 12 Invoice total amount	M an..3
M		6066	Control value Total monetary value of the invoice.	M n..18
X		6411	Measure unit qualifier	C an..3

Segment: UNT Message Trailer
Position: 0500
Group:
Level: 0
Usage: Mandatory
Max Use: 1
Purpose: A service segment ending a message, giving the total number of segments in the message and the control reference number of the message.

Data Element Summary

<u>User</u>	<u>Data</u>	<u>Component</u>	<u>Name</u>	<u>Attributes</u>
<u>Attribute</u>	<u>Element</u>	<u>Element</u>		
M	0074		NUMBER OF SEGMENTS IN A MESSAGE	M n..6
M	0062		MESSAGE REFERENCE NUMBER	M an..14

Same as DE0062 in the UNH segment.

Example:

UNT+40+0001'