

IFTMBF Firm Booking Message

Introduction:

A message from a party definitely booking forwarding and/or transport services for a consignment to the party providing those services. The message will contain the conditions under which the sender of the messages requires the services to take place.

Notes:

GA EDICOM Version 1.3

This MIG in its current version has been agreed by members of the Grand Alliance for the exchange of DG bookings between partner lines. It is intended to submit this manual to the SMDG, where it will be reviewed and adopted for the exchange of DG booking information between slot-sharing shipping lines.

To retain compatibility with earlier directories the max field lengths of various non-code fields, which have been extended in the 00B directory, have been restricted to the max length from previous directories.

Version 1.1 changes:

- NAD at header level has been opened up (optional) to allow Shipper & Consignee information to be exchanged.*
- An FTX at GID level has been added to declare the aggregation state of the cargo.*
- The FTX at DGS level has been amended to positively identify substances that are Not a Marine pollutant.*

Version 1.2 changes:

- When NAD was opened up in version 1.1 all other segment in SG10 were inadvertently made available as well. These have now been correctly indicated as Not used.*

Version 1.3 changes:

- The FTX at DGS level has been amended to specify the IMDG Code segregation group. This is required for N.O.S. entries.*
- The FTX at DGS level has been amended to specify the UNNO Suffix Code.*
- The code value 'PP' (Severe Marine Pollutant) has been removed from the FTX at DGS level.*
- The CTA-COM at DGS level have been amended to specify the phone number, the name and a reference for both the main emergency contact and the alternative emergency contact.*
- Two code values MTQ and FTQ were added to the MEA at goods level.*

Version 1.3.1 changes:

- The FTX at DGS level for specification of the UNNO Suffix Code was changed. It now refers to the structured 4-character variant code plus the 5-digit numeric version code.*

Summary of non-standard codes used. Official versions of these codes should be requested at the earliest convenient time.

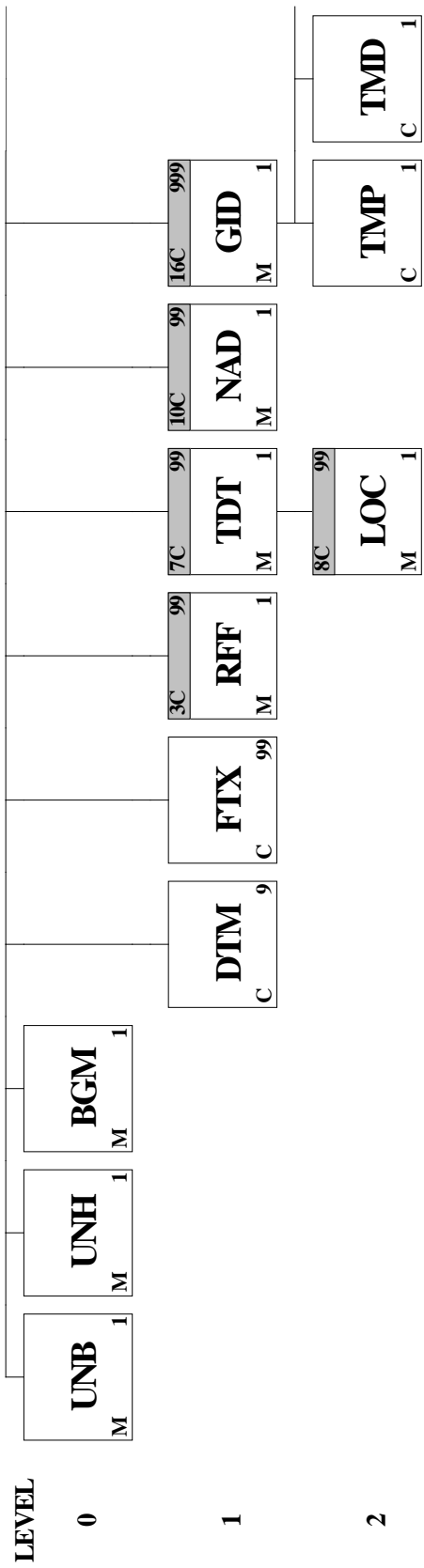
GID-TMP: 6 -SADT Self-Accelerating Decomposition Temperature

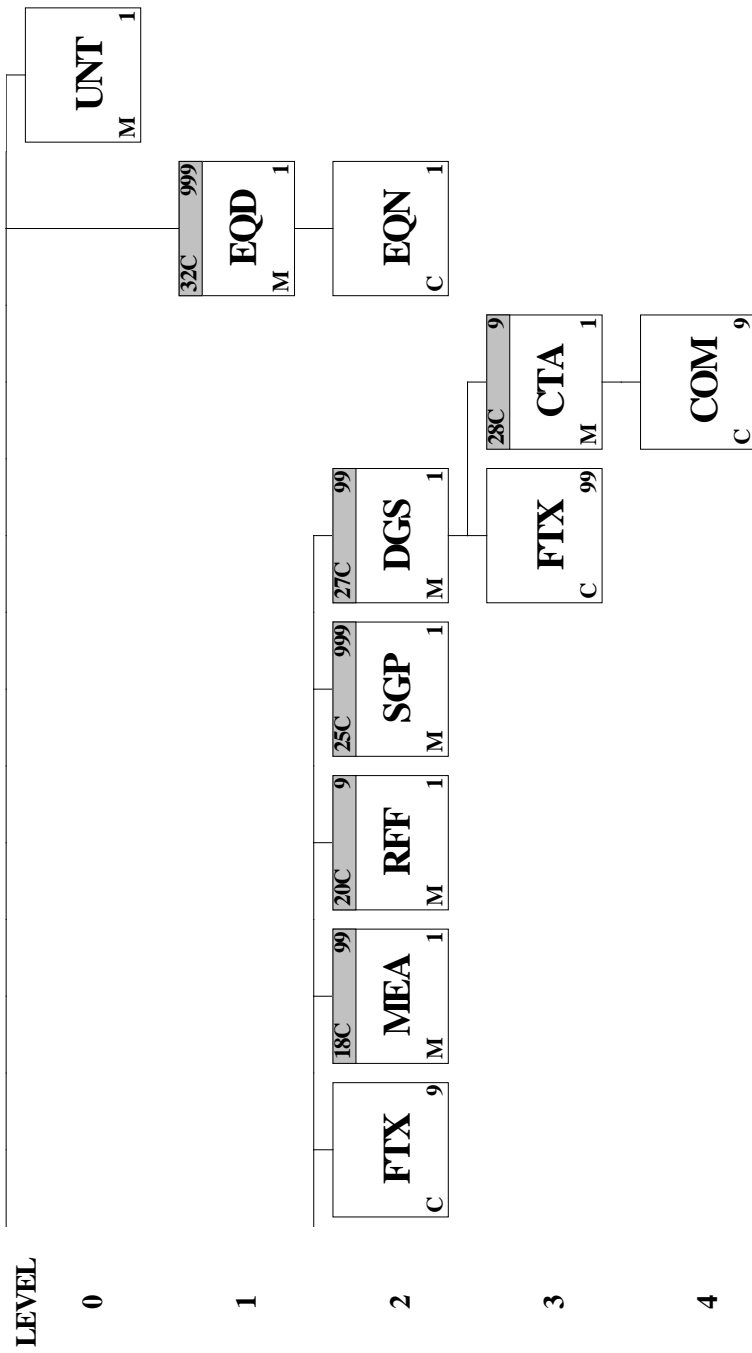
FTX: PSN - Proper shipping name

EQD: BB - Break bulk

<u>Page No.</u>	<u>Pos. No.</u>	<u>Seg. ID</u>	<u>Name</u>	<u>Req. Des.</u>	<u>Max.Use</u>	<u>Group Repeat</u>
5	0010	UNB	Interchange Header	M	1	
6	0020	UNH	Message Header	M	1	
7	0030	BGM	Beginning of Message	M	1	
9	0060	DTM	Date/Time/Period	C	9	
10	0090	FTX	Free Text	C	99	

	0180		Segment Group 3: RFF	C	99
12	0190	RFF	Reference	M	1
	0370		Segment Group 7: TDT-SG8	C	99
14	0380	TDT	Details of Transport	M	1
	0410		Segment Group 8: LOC	C	99
17	0420	LOC	Place/Location Identification	M	1
	0470		Segment Group 10: NAD	C	99
19	0480	NAD	Name and Address	M	1
	0710		Segment Group 16: GID-TMP-TMD-FTX-SG18-SG20-SG25-SG27	C	999
21	0720	GID	Goods Item Details	M	1
23	0740	TMP	Temperature	C	1
24	0760	TMD	Transport Movement Details	C	1
25	0800	FTX	Free Text	C	9
	0860		Segment Group 18: MEA	C	99
27	0870	MEA	Measurements	M	1
	0920		Segment Group 20: RFF	C	9
29	0930	RFF	Reference	M	1
	1080		Segment Group 25: SGP	C	999
31	1090	SGP	Split Goods Placement	M	1
	1130		Segment Group 27: DGS-FTX-SG28	C	99
34	1140	DGS	Dangerous Goods	M	1
36	1150	FTX	Free Text	C	99
	1160		Segment Group 28: CTA-COM	C	9
40	1170	CTA	Contact Information	M	1
41	1180	COM	Communication Contact	C	9
	1270		Segment Group 32: EQD-EQN	C	999
43	1280	EQD	Equipment Details	M	1
44	1290	EQN	Number of Units	C	1
45	1500	UNT	Message Trailer	M	1





Segment: **UNB** Interchange Header
 Position: 0010
 Group:
 Level: 0
 Usage: Mandatory
 Max Use: 1
 Purpose: To start, identify and specify an interchange
 Notes:

*Multi-messages should be repeated between UNB and UNZ segments.
 UNB and UNZ segments should be used once in a single interchange.
 One single message should contain one DG Booking data.*

The UNB segment is not officially part of the message and has been included for clarification. Detailed filling of UNB elements should be mutually agreed between partners.

Data Element Summary

User Attribute	Data Element	Component Element	Name	Attributes
M	S001		SYNTAX IDENTIFIER	M 1
M		0001	Syntax identifier <i>UNOB UN/ECE level B</i>	M a4
M		0002	Syntax version number <i>1 Version 1</i>	M n1
M	S002		INTERCHANGE SENDER	M 1
M		0004	Sender identification <i>To be mutually agreed.</i>	M an..35
X		0007	Partner identification code qualifier	C an..4
X		0008	Address for reverse routing	C an..14
M	S003		INTERCHANGE RECIPIENT <i>To be mutually agreed</i>	M 1
M		0010	Recipient identification	M an..35
X		0007	Partner identification code qualifier	C an..4
X		0014	Routing address	C an..14
M	S004		DATE AND TIME OF PREPARATION	M 1
M		0017	Date of preparation <i>YYMMDD</i>	M n6
M		0019	Time of preparation <i>HHMM</i>	M n4
M	0020		INTERCHANGE CONTROL REFERENCE	M 1 an..14
X	S005		RECIPIENTS REFERENCE PASSWORD	C 1
X		0022	Recipient reference/password	M an..14
X		0025	Recipient reference/password qualifier	C an2
X	0026		APPLICATION REFERENCE	C 1 an..14
X	0029		PROCESSING PRIORITY CODE	C 1 a1
X	0031		ACKNOWLEDGEMENT REQUEST	C 1 n1
O	0032		COMMUNICATIONS AGREEMENT ID <i>DGBF</i>	C 1 an..35
			<i>DGBF DG Booking</i>	
O	0035		TEST INDICATOR <i>The use of the test indicator is by mutual consent</i>	C 1 n1
			<i>1 Interchange is a test</i>	

Segment: UNH Message Header
Position: 0020
Group:
Level: 0
Usage: Mandatory
Max Use: 1
Purpose: A service segment starting and uniquely identifying a message. The message type code for the Firm booking message is IFTMBF.
 Note: Firm booking messages conforming to this document must contain the following data in segment UNH, composite S009:
 Data element 0065 IFTMBF 0052 D 0054 00B
 0051 UN

Data Element Summary

<u>User</u>	<u>Data</u>	<u>Component</u>	<u>Name</u>	<u>Attributes</u>
<u>Attribute</u>	<u>Element</u>	<u>Element</u>		
M	0062		MESSAGE REFERENCE NUMBER	M 1 an..14
M	S009		MESSAGE IDENTIFIER	M 1
M		0065	Message type identifier <i>IFTMBF Firm booking message</i>	M an..6
M		0052	Message type version number <i>D</i>	M an..3
M		0054	Message type release number <i>00B Release 2000 - B</i>	M an..3
M		0051	Controlling agency <i>UN UN/ECE/TRADE/WP.4, United Nations Standard Messages (UNSM)</i>	M an..2
R		0057	Association assigned code <i>GAEDI Grand Alliance EDI committee</i> Temporary code assignment.	C an..6
X	0068		COMMON ACCESS REFERENCE	C 1 an..35
X	S010		STATUS OF THE TRANSFER	C 1
X		0070	Sequence message transfer number	M n..2
X		0073	First/last sequence message transfer indication	C a1

Segment: **BGM** Beginning of Message
Position: 0030
Group:
Level: 0
Usage: Mandatory
Max Use: 1
Purpose: A segment to indicate the beginning of a message and to transmit identifying number and type of the message.

Notes: **APERAKs**
In the case of APERAKs, the BGM 1004, Cargo Operator's Reference Number can be referenced, since the APERAK acknowledges a message, not the booking.

IFTMBCs
In the case of a booking confirmation, the booking number RFF+BN and the Date/Time of the related IFTMBF should be quoted.

Data Element Summary

User	Data	Component		
<u>Attribute</u>	<u>Element</u>	<u>Element</u>	<u>Name</u>	<u>Attributes</u>
R	C002		DOCUMENT/MESSAGE NAME	C 1
R		1001	Document name code 335 Booking request	C an..3
X		1131	Code list identification code	C an..17
X		3055	Code list responsible agency code	C an..3
X		1000	Document name	C an..35
R	C106		DOCUMENT/MESSAGE IDENTIFICATION	C 1
R		1004	Document identifier	C an..35

Cargo Operator Reference Number. This will be a unique number per transmission.

The Cargo Operator's Booking Number is sent in the RFF+BN segment at header level.

Note: This may be the same number used in UNH 0062

X		1056	Version identifier	C an..9
X		1060	Revision identifier	C an..6
R	1225		MESSAGE FUNCTION CODE	C 1 an..3

Replacements and cancellations must be done at booking level.

Hence a replacement/cancellation message will:

- *have a new BGM 1004 unique number*
- *refer to the relevant booking number by using RFF+BN.*

To make sure that the receiving party always processes the files in the correct order, the Date/Time of the message (header level DTM segment) must be used on loading. Only messages with a Date/Time later than the previously processed message in the receiver's system should be processed.

If a batch of files for the same booking arrives together (because of technical problems say), they should be processed in Date/Time order.

In case of the cancellation or replace of the message, the reason or contents of change can be described in FTX segment (Header level).

1 Cancellation

Cancellation messages are required when transferring a booking to a different voyage or in any other

instance where the booking is cancelled. Positive cancellations are required from the sending Cargo operator, for completeness, even after sailing.

When the vessel operator cancels a booking which has already been approved (e.g. because of a failed inspection), the cargo operator should be informed by Fax, email or phone call.

The vessel operator remains responsible for reflecting cancellations in the manifest details sent to ports (IFTDGN)

5

Replace

For amended bookings, the entire booking message will be sent again even if some items have been approved already. It will be the receiving line's responsibility to overwrite any amended items; cancel any items on the original booking not present in the amended booking; leave untouched any items already approved and resend unchanged.

that changes to any of the following must imply a replacement IFTMBF message:

- Port of Discharge/ Port of Load*
- Container size/type*
- Any DGS details e.g. IMO code*

9

Original

New Booking; also used for replacement booking in case of changed voyage.

X

4343

RESPONSE TYPE CODE

C

1 an.3

Segment: **DTM** Date/Time/Period
Position: 0060
Group:
Level: 1
Usage: Conditional (Required)
Max Use: 9
Purpose: A segment to indicate a date and time applying to the whole message, e.g., date and time of document issue.
Notes: *Creation Date/Time of the message in the generating system. This time is important for sequencing of Original, Replacement and Cancellation messages.*

Data Element Summary

<u>User</u>	<u>Data</u>	<u>Component</u>	<u>Name</u>	<u>Attributes</u>
<u>Attribute</u>	<u>Element</u>	<u>Element</u>		
M	C507		DATE/TIME/PERIOD	M 1
M		2005	Date or time or period function code qualifier <i>137 Document/message date/time</i>	M an..3
R		2380	Date or time or period value <i>Preferable actual date and time this message was issued</i>	C an..35
R		2379	Date or time or period format code <i>203 CCYYMMDDHHMM</i>	C an..3

Segment: **FTX** Free Text

Position: 0090

Group:

Level: 1

Usage: Conditional (Optional)

Max Use: 99

Purpose: A segment to specify free form or processable supplementary information, such as status of transport, remarks to be printed on the transport documents (where required), consignment remarks, insurance instructions, etc., or any other additional information.

Notes: *In case a booking is transferred to a new voyage, the original booking is to be cancelled and a new (original) booking is prepared. This FTX segment may be used to provide a cross-reference from the original booking to the original cancelled one. This cross-reference is for information only.*

Data Element Summary

User	Data	Component			
<u>Attribute</u>	<u>Element</u>	<u>Element</u>	<u>Name</u>		<u>Attributes</u>
M	4451		TEXT SUBJECT CODE QUALIFIER	M	1 an..3
			AAI General information		
X	4453		FREE TEXT FUNCTION CODE	C	1 an..3
X	C107		TEXT REFERENCE	C	1
X		4441	Free text value code	M	an..17
X		1131	Code list identification code	C	an..17
X		3055	Code list responsible agency code	C	an..3
O	C108		TEXT LITERAL	C	1
			<i>When original message was revised and resent, the contents of change can be described in this segment for receiver's convenience</i>		
M		4440	Free text value	M	an..70
			<i>Maximum length reduced in to size of older directories</i>		
O		4440	Free text value	C	an..70
			<i>Maximum length reduced in to size of older directories</i>		
O		4440	Free text value	C	an..70
			<i>Maximum length reduced in to size of older directories</i>		
O		4440	Free text value	C	an..70
			<i>Maximum length reduced in to size of older directories</i>		
O		4440	Free text value	C	an..70
			<i>Maximum length reduced in to size of older directories</i>		
X	3453		LANGUAGE NAME CODE	C	1 an..3
O	4447		FREE TEXT FORMAT CODE	C	1 an..3

Group: **RFF** Segment Group 3: Reference
Position: 0180
Group:
Level: 1
Usage: Conditional (Required)
Max Use: 99
Purpose: A group of segments containing a reference and constants which apply to the entire message.

				Segment Summary		
User	Pos.	Seg.		Req.	Max.	
<u>Attribute</u>	<u>Group:</u> <u>No.</u>	<u>ID</u>	<u>Name</u>	<u>Des.</u>	<u>Use</u>	<u>Repeat</u>
M	0190	RFF	Reference	M	1	

Segment: **RFF** Reference
Position: 0190 (Trigger Segment)
Group: Segment Group 3 (Reference) Conditional (Required)
Level: 1
Usage: Mandatory
Max Use: 1
Purpose: A segment to express a reference which applies to the entire message such as: the document/message number that is to be updated by this very message (according to data element 1225 Message function code in segment BGM), booking reference, order number, insurance contract, etc.
Notes: *Cargo Operator's Booking Number.*

Data Element Summary

<u>User</u>	<u>Data</u>	<u>Component</u>	<u>Attributes</u>
<u>Attribute</u>	<u>Element</u>	<u>Element</u> <u>Name</u>	
M	C506	REFERENCE	M 1
M		1153 Reference code qualifier <i>BN Booking reference number</i>	M an..3
R		1154 Reference identifier <i>Maximum length reduced in to size of older directories</i>	C an..35
X		1156 Document line identifier	C an..6
X		4000 Reference version identifier	C an..35
O		1060 Revision identifier	C an..6

Group: **TDT** Segment Group 7: Details of Transport
Position: 0370
Group:
Level: 1
Usage: Conditional (Required)
Max Use: 99
Purpose: A group of segments to indicate details of the movement of goods such as mode and means of transport, locations, departure, and arrival date(s) and time(s).
Notes: *In practice only one TDT group will be accepted.*

Segment Summary						
User	Group:	Pos.	Seg.		Req.	Max.
<u>Attribute</u>	<u>No.</u>	<u>ID</u>	<u>Name</u>	<u>Des.</u>	<u>Use</u>	<u>Repeat</u>
M	0380	TDT	Details of Transport	M	1	
	0410		Segment Group 8: Place/Location Identification	C		99

Segment: **TDT** Details of Transport
Position: 0380 (Trigger Segment)
Group: Segment Group 7 (Details of Transport) Conditional (Required)
Level: 1
Usage: Mandatory
Max Use: 1
Purpose: A segment to indicate information related to a certain stage of the transport, such as mode, means and carrier.

Data Element Summary

User	Data	Component		
<u>Attribute</u>	<u>Element</u>	<u>Element</u>	<u>Name</u>	<u>Attributes</u>
M	8051		TRANSPORT STAGE CODE QUALIFIER	M 1 an..3
			20 Main-carriage transport	
R	8028		MEANS OF TRANSPORT JOURNEY IDENTIFIER	C 1 an..17
			<i>GA Export Voyage Number</i>	
R	C220		MODE OF TRANSPORT	C 1
R		8067	Transport mode name code	C an..3
			1 Maritime	
X		8066	Transport mode name	C an..17
O	C228		TRANSPORT MEANS	C 1
O		8179	Transport means description code	C an..8
			8 Container ship	
X		8178	Transport means description	C an..17
O	C040		CARRIER	C 1
O		3127	Carrier identifier	C an..17
			<i>Vessel operator's name coded, preferably according to SMDG carrier code list once published.</i>	
			HLC Hapag Lloyd	
			MIS MISC	
			NYK NYK	
			OOL OOCL	
			PON P&O Nedlloyd	
X		1131	Code list identification code	C an..17
O		3055	Code list responsible agency code	C an..3
			<i>SMDG carrier code list preferred (coded ZZZ)</i>	
			20 BIC (Bureau International des Containeurs)	
			166 US, National Motor Freight Classification Association	
			ZZZ Mutually defined	
			SMDG carrier code list, substitute relevant code once defined.	
X		3128	Carrier name	C an..35
X	8101		TRANSIT DIRECTION INDICATOR CODE	C 1 an..3
X	C401		EXCESS TRANSPORTATION INFORMATION	C 1
X		8457	Excess transportation reason code	M an..3
X		8459	Excess transportation responsibility code	M an..3
X		7130	Customer shipment authorisation identifier	C an..17
R	C222		TRANSPORT IDENTIFICATION	C 1
M		8213	Transport means identification name identifier	M an..9
			<i>Call sign (if 8067 = 1 and C222/1131 = 103)</i>	
			<i>Lloyds Number (if 8067 = 1 and C222/1131 = 146)</i>	
			<i>To maintain consistency with the GA BAPLIE implementation the call sign is preferred.</i>	

O	1131	Code list identification code	C	an..17
		103 Call sign directory		
		146 Means of transport identification		
		= Lloyds code		
X	3055	Code list responsible agency code	C	an..3
O	8212	Transport means identification name	C	an..35
		<i>Vessel's full name</i>		
		<i>Primarily to be used as reference in case received code is not recognised in recipients system.</i>		
O	8453	Transport means nationality code	C	an..3
		<i>ISO Country code in line with UN Recommendation 3 (ISO 3166)</i>		
X	8281	TRANSPORT MEANS OWNERSHIP INDICATOR CODE	C	1 an..3

Group: **LOC** **Segment Group 8: Place/Location Identification**
Position: 0410
Group: Segment Group 7 (Details of Transport) Conditional (Required)
Level: 2
Usage: Conditional (Required)
Max Use: 99
Purpose: A group of segments to specify a location and date/time related to this leg of transport.

Segment Summary						
User	Group:	Pos.	Seg.		Req.	Max.
<u>Attribute</u>	<u>No.</u>	<u>ID</u>	<u>Name</u>	<u>Des.</u>	<u>Use</u>	<u>Repeat</u>
M	0420	LOC	Place/Location Identification	M		1

Segment: **LOC** Place/Location Identification
Position: 0420 (Trigger Segment)
Group: Segment Group 8 (Place/Location Identification) Conditional (Required)
Level: 2
Usage: Mandatory
Max Use: 1
Purpose: A segment to indicate a location such as origin, destination, stop off, etc. related to this leg of transport.

Notes: *In case of double berthing on OOCL and NYK terminals at Kaohsiung, this booking is to be discharged at NYK terminal in Kaohsiung.*
LOC+9+TWKHH+:72:ZZZ:NYK TERMINAL'

Only Port of Loading and Discharge are mandatory

Data Element Summary

User Attribute	Data Element	Component Element	Name	Attributes
M	3227		LOCATION FUNCTION CODE QUALIFIER	M 1 an..3
			7 Place of delivery	
			9 Place/port of loading	
			<i>(Operational port of loading)</i>	
			11 Place/port of discharge	
			<i>(Operational port of discharge)</i>	
			88 Place of receipt	
R	C517		LOCATION IDENTIFICATION	C 1
R		3225	Location name code	C an..25
			<i>UN-LOCODE</i>	
O		1131	Code list identification code	C an..17
			139 Port	
O		3055	Code list responsible agency code	C an..3
			6 UN/ECE (United Nations - Economic Commission for Europe)	
X		3224	Location name	C an..256
O	C519		RELATED LOCATION ONE IDENTIFICATION	C 1
O		3223	First related location name code	C an..25
O		1131	Code list identification code	C an..17
			72 Terminal	
O		3055	Code list responsible agency code	C an..3
			ZZZ Mutually defined	
O		3222	First related location name	C an..70
X	C553		RELATED LOCATION TWO IDENTIFICATION	C 1
X		3233	Second related location name code	C an..25
X		1131	Code list identification code	C an..17
X		3055	Code list responsible agency code	C an..3
X		3232	Second related location name	C an..70
X	5479		RELATION CODE	C 1 an..3

Group: **NAD** **Segment Group 10: Name and Address**
Position: 0470
Group:
Level: 1
Usage: Conditional (Optional)
Max Use: 99
Purpose: A group of segments to identify a party, related references, locations contacts, required documents, and charges to be paid by the party.

Segment Summary						
User	Pos.	Seg.		Req.	Max.	
<u>Attribute</u>	<u>No.</u>	<u>ID</u>	<u>Name</u>	<u>Des.</u>	<u>Use</u>	<u>Repeat</u>
M	0480	NAD	Name and Address	M	1	

Segment: **NAD** Name and Address
Position: 0480 (Trigger Segment)
Group: Segment Group 10 (Name and Address) Conditional (Optional)
Level: 1
Usage: Mandatory
Max Use: 1
Purpose: A segment to identify the party's name, address, and function.
Notes: *The NAD segment is available to exchange shipper and consignee details if available and needed. This data may be required on the DG manifest and exchanging it at booking level will reduce the workload of producing the manifest.*

Data Element Summary

<u>User</u>	<u>Data</u>	<u>Component</u>	<u>Name</u>	<u>Attributes</u>
<u>Attribute</u>	<u>Element</u>	<u>Element</u>		
M	3035		PARTY FUNCTION CODE QUALIFIER	M 1 an..3
			CN Consignee	
			CZ Consignor	
O	C082		PARTY IDENTIFICATION DETAILS	C 1
M		3039	Party identifier	M an..35
O		1131	Code list identification code	C an..17
O		3055	Code list responsible agency code	C an..3
O	C058		NAME AND ADDRESS	C 1
M		3124	Name and address description	M an..35
O		3124	Name and address description	C an..35
O		3124	Name and address description	C an..35
O		3124	Name and address description	C an..35
O		3124	Name and address description	C an..35
X	C080		PARTY NAME	C 1
X		3036	Party name	M an..35
X		3036	Party name	C an..35
X		3036	Party name	C an..35
X		3036	Party name	C an..35
X		3036	Party name	C an..35
X		3045	Party name format code	C an..3
X	C059		STREET	C 1
X		3042	Street and number or post office box identifier	M an..35
X		3042	Street and number or post office box identifier	C an..35
X		3042	Street and number or post office box identifier	C an..35
X		3042	Street and number or post office box identifier	C an..35
X	3164		CITY NAME	C 1 an..35
X	C819		COUNTRY SUB-ENTITY DETAILS	C 1
X		3229	Country sub-entity name code	C an..9
X		1131	Code list identification code	C an..17
X		3055	Code list responsible agency code	C an..3
X		3228	Country sub-entity name	C an..35
X	3251		POSTAL IDENTIFICATION CODE	C 1 an..17
X	3207		COUNTRY NAME CODE	C 1 an..3

Group: **GID** Segment Group 16: Goods Item Details
Position: 0710
Group:
Level: 1
Usage: Conditional (Optional)
Max Use: 999
Purpose: A group of segments to describe the goods items for which transport is undertaken.
Notes: *Required for all instances with the exception of a Cancel message (BGM:1225 = 1)*

In case multiple DG's are combined in the same Outer packaging this should be handled by supplying clear remarks in the FTX segment.

			Segment Summary			
User	Pos.	Seg.		Req.	Max.	
<u>Attribute</u>	<u>No.</u>	<u>ID</u>	<u>Name</u>	<u>Des.</u>	<u>Use</u>	<u>Repeat</u>
M	0720	GID	Goods Item Details	M	1	
O	0740	TMP	Temperature	C	1	
O	0760	TMD	Transport Movement Details	C	1	
O	0800	FTX	Free Text	C	9	
	0860		Segment Group 18: Measurements	C		99
	0920		Segment Group 20: Reference	C		9
	1080		Segment Group 25: Split Goods Placement	C		999
	1130		Segment Group 27: Dangerous Goods	C		99

Segment: **GID** Goods Item Details
Position: 0720 (Trigger Segment)
Group: Segment Group 16 (Goods Item Details) Conditional (Optional)
Level: 1
Usage: Mandatory
Max Use: 1
Purpose: A segment to identify a goods item for which transport is undertaken. A goods item can be identified by up to three levels of packaging.
Notes: *If there are more than one DG items in one booking, this GID group is repeated. General Recommendation JM4/12 stipulates that each occurrence of the GID Group should relate to goods of only one package type.*

Examples
 =====

10 Steel drums, not coded.
GID+001+10:::STEEL DRUM'

10 Steel drums, coded.
GID+001+10:1A:::STEEL DRUM'

1 fibreboard box with plastic receptacle (composite)(coded)
GID+002+1:6HG2:::PLASTICS RECEPTACLE IN FIBREBOARD BOX'

12 fibreboard boxes containing glass bottles (combination) (part coded)
GID+003+12:4G:::FIBREBOARD BOX+:::GLASS BOTTLE'
The related FTX segment should be used (qualifier AAI) to identify separate items packed into the same over-pack. Alternatively this could also be identified using the RFF.

Data Element Summary

<u>User</u>	<u>Data</u>	<u>Component</u>	<u>Attributes</u>
<u>Attribute</u>	<u>Element</u>	<u>Element</u> <u>Name</u>	<u>Attributes</u>
R	1496	GOODS ITEM NUMBER	C 1 n..5
<i>Give one sequential number for each DG goods item. Always starts from 1 in each message.</i>			
R	C213	NUMBER AND TYPE OF PACKAGES	C 1
<i>Packaging should be described from the outside. The first occurrence is either the outer or the only package level</i>			
R		7224 Package quantity	C n..8
O		7065 Package type description code	C an..17
<i>Codes from the eighth edition (1993) of the Recommendations of the Transport of Dangerous Goods ("Orange Book"), Section 9.4, supplemented with mutually agreed codes when available.</i>			
<i>A list of agreed codes is supplied in IFTMBF Annex 1.</i>			
X		1131 Code list identification code	C an..17
X		3055 Code list responsible agency code	C an..3
R		7064 Type of packages	C an..35
<i>Always provide text. Either supplemental to or as replacement for the code value</i>			
O		7233 Packaging related description code	C an..3
O	C213	NUMBER AND TYPE OF PACKAGES	C 1
O		7224 Package quantity	C n..8
<i>Total number of packages regardless of outer packing.</i>			
O		7065 Package type description code	C an..17

X		1131	Code list identification code	C	an..17
X		3055	Code list responsible agency code	C	an..3
R		7064	Type of packages	C	an..35
O		7233	Packaging related description code	C	an..3
X	C213		NUMBER AND TYPE OF PACKAGES	C	1
X		7224	Package quantity	C	n..8
X		7065	Package type description code	C	an..17
X		1131	Code list identification code	C	an..17
X		3055	Code list responsible agency code	C	an..3
X		7064	Type of packages	C	an..35
X		7233	Packaging related description code	C	an..3
X	C213		NUMBER AND TYPE OF PACKAGES	C	1
X		7224	Package quantity	C	n..8
X		7065	Package type description code	C	an..17
X		1131	Code list identification code	C	an..17
X		3055	Code list responsible agency code	C	an..3
X		7064	Type of packages	C	an..35
X		7233	Packaging related description code	C	an..3
X	C213		NUMBER AND TYPE OF PACKAGES	C	1
X		7224	Package quantity	C	n..8
X		7065	Package type description code	C	an..17
X		1131	Code list identification code	C	an..17
X		3055	Code list responsible agency code	C	an..3
X		7064	Type of packages	C	an..35
X		7233	Packaging related description code	C	an..3

Segment: **TMP** Temperature
Position: 0740
Group: Segment Group 16 (Goods Item Details) Conditional (Optional)
Level: 2
Usage: Conditional (Optional)
Max Use: 1
Purpose: A segment to specify a temperature setting for a goods item.
Notes: *No temperature ranges are catered for.*

The EDIFACT standard allows for only 1 occurrence of the TMP segment, but for reefers, say, there is a need to send temperatures in addition to Transport Temp, viz.:

- Control
- Emergency
- SADT (Self-Accelerating Decomposition Temperature).

When more than one TMP is relevant the FTX segment is to be used for all additional values.

Data Element Summary

<u>User</u>	<u>Data</u>	<u>Component</u>	<u>Name</u>	<u>Attributes</u>
<u>Attribute</u>	<u>Element</u>	<u>Element</u>		
M	6245		TEMPERATURE TYPE CODE QUALIFIER	M 1 an..3
<i>As we have insufficient occurrence to list all required Temperatures the subsequent FTX may be used to provide the additional ones.</i>				
			2 Transport temperature	
			4 Transport emergency temperature	
			5 Transport control temperature	
			6 SADT (Self-Accelerating Decomposition Temperature)	
<i>Temporary code, DMR to be prepared.</i>				
O	C239		TEMPERATURE SETTING	C 1
R		6246	Temperature value	C n..3
<i>Maximum length reduced to size of older directories</i>				
<i>If the temperature value is negative the minus (-) sign must be transmitted in data element 6246. The minus sign and/or decimal point does not count in the total number of characters. This is demonstrated in the following example:</i>				
<i>TMP+2+-4.0:CEL' (Transport temperature -4.0 degrees C)</i>				
<i>Temperatures should only be expressed to one decimal place.</i>				
R		6411	Measurement unit code	C an..3
			CEL Celsius	

Segment: **TMD** Transport Movement Details
Position: 0760
Group: Segment Group 16 (Goods Item Details) Conditional (Optional)
Level: 2
Usage: Conditional (Optional)
Max Use: 1
Purpose: A segment to specify transport movement details for a goods item.

Data Element Summary

<u>Attribute</u>	<u>User</u>	<u>Data</u>	<u>Component</u>	<u>Element</u>	<u>Name</u>	<u>Attributes</u>
R		C219			MOVEMENT TYPE	C 1
O			8335		Movement type description code	C an..3
				1	Breakbulk	
				2	LCL/LCL	
				3	FCL/FCL	
				4	FCL/LCL	
				5	LCL/FCL	
X			8334		Movement type description	C an..35
X		8332			EQUIPMENT PLAN DESCRIPTION	C 1 an..26
X		8341			HAULAGE ARRANGEMENTS CODE	C 1 an..3

Segment: **FTX** Free Text
Position: 0800
Group: Segment Group 16 (Goods Item Details) Conditional (Optional)
Level: 2
Usage: Conditional (Optional)
Max Use: 9
Purpose: A segment to specify processable supplementary information relating to the goods item.
Notes: *In case various temperatures are needed for the cargo item additional temperatures can be sent using an FTX with qualifier OSI, FTX code in accordance with the Temperature qualifier needed and set the value the first Text literal. e.g. FTX+OSI++5:TMP+?+-.4.0:CEL.*

Data Element Summary

<u>User</u>	<u>Data</u>	<u>Component</u>	<u>Name</u>	<u>Attributes</u>
<u>Attribute</u>	<u>Element</u>	<u>Element</u>		
M	4451		TEXT SUBJECT CODE QUALIFIER	M 1 an..3
			AAC Dangerous goods additional information	
			Use to communicate Aggregation state:	
			G = Gas	
			L = Liquid	
			S = Solid	
			AAI General information	
			OSI Other service information	
X	4453		FREE TEXT FUNCTION CODE	C 1 an..3
O	C107		TEXT REFERENCE	C 1
M		4441	Free text value code	M an..17
			<i>Temperature qualifier as used in TMP segment</i>	
			AAG Agregation state	
O		1131	Code list identification code	C an..17
			<i>TMP (non standard code) to additional Temperature settings.</i>	
X		3055	Code list responsible agency code	C an..3
O	C108		TEXT LITERAL	C 1
M		4440	Free text value	M an..70
			<i>Maximum length reduced to size of older directories</i>	
			<i>Temp sign when OSI (TMP)</i>	
O		4440	Free text value	C an..70
			<i>Maximum length reduced to size of older directories</i>	
			<i>Temperature setting when used with OSI (TMP)</i>	
O		4440	Free text value	C an..70
			<i>Maximum length reduced to size of older directories</i>	
			<i>Measure unit type when used with OSI (TMP)</i>	
O		4440	Free text value	C an..70
			<i>Maximum length reduced to size of older directories</i>	
O		4440	Free text value	C an..70
			<i>Maximum length reduced to size of older directories</i>	
X	3453		LANGUAGE NAME CODE	C 1 an..3
O	4447		FREE TEXT FORMAT CODE	C 1 an..3

Group: MEA Segment Group 18: Measurements
Position: 0860
Group: Segment Group 16 (Goods Item Details) Conditional (Optional)
Level: 2
Usage: Conditional (Required)
Max Use: 99
Purpose: A group of segments to specify measurements applicable to a goods item.
Notes: *It should be used at least once to provide the gross weight of the goods item.*

Segment Summary

User	Pos.	Seg.	Req.	Max.
<u>Attribute</u>	<u>No.</u>	<u>ID</u>	<u>Des.</u>	<u>Use</u>
M	0870	MEA	M	1

Segment: MEA Measurements
Position: 0870 (Trigger Segment)
Group: Segment Group 18 (Measurements) Conditional (Required)
Level: 2
Usage: Mandatory
Max Use: 1
Purpose: A segment to specify measurements, other than dimensions, applicable to a goods item.
Notes: *Only Gross Weight (G) is mandatory.*

Data Element Summary

<u>User</u>	<u>Data</u>	<u>Component</u>	<u>Name</u>	<u>Attributes</u>
<u>Attribute</u>	<u>Element</u>	<u>Element</u>		
M	6311		MEASUREMENT PURPOSE CODE QUALIFIER	M 1 an..3
			<i>VOL Volume</i>	
			<i>WT Weights</i>	
R	C502		MEASUREMENT DETAILS	C 1
R		6313	Measured attribute code	C an..3
			<i>AAL Net weight</i>	
			<i>ABJ Volume</i>	
			<i>G Gross weight</i>	
			<i>T19 Net explosive weight (power weight)</i>	
			<i>For class 1 only (mandatory)</i>	
X		6321	Measurement significance code	C an..3
X		6155	Non-discrete measurement name code	C an..17
X		6154	Non-discrete measurement name	C an..70
R	C174		VALUE/RANGE	C 1
M		6411	Measurement unit code	M an..3
			<i>FTQ Cubic Foot</i>	
			<i>GRM Grams</i>	
			<i>KGM Kilograms</i>	
			<i>LTR Litre</i>	
			<i>MTQ Cubic Metre</i>	
R		6314	Measurement value	C an..18
X		6162	Range minimum value	C n..18
X		6152	Range maximum value	C n..18
O		6432	Significant digits quantity	C n..2
X	7383		SURFACE OR LAYER CODE	C 1 an..3

Group: **RFF** Segment Group 20: Reference
Position: 0920
Group: Segment Group 16 (Goods Item Details) Conditional (Optional)
Level: 2
Usage: Conditional (Dependent)
Max Use: 9
Purpose: A group of segments to identify references to a goods item.
Notes: *Required in case of Hazardous cargo.*

Segment Summary						
User	Pos.	Seg.		Req.	Max.	
<u>Attribute</u>	<u>No.</u>	<u>ID</u>	<u>Name</u>	<u>Des.</u>	<u>Use</u>	<u>Repeat</u>
M	0930	RFF	Reference	M	1	

Segment: **RFF** Reference
Position: 0930 (Trigger Segment)
Group: Segment Group 20 (Reference) Conditional (Dependent)
Level: 2
Usage: Mandatory
Max Use: 1
Purpose: A segment to identify a reference to a goods item.
Notes: *DG Reference Number*

Data Element Summary

<u>User</u>	<u>Data</u>	<u>Component</u>	<u>Name</u>	<u>Attributes</u>
<u>Attribute</u>	<u>Element</u>	<u>Element</u>		
M	C506		REFERENCE	M 1
M		1153	Reference code qualifier	M an..3
			<i>ACI Outerpackaging unit identification</i>	
			<i>Use to link multiple goods items in same over pack.</i>	
			<i>CN Carrier's reference number</i>	
R		1154	Reference identifier	C an..35
			<i>Maximum length reduced to size of older directories</i>	
			<i>This number must be unique per Vessel/Voyage/Leg.</i>	
X		1156	Document line identifier	C an..6
R		4000	Reference version identifier	C an..35
			<i>This number identifies the version of the DG reference number. It changes whenever the details of the DG item change. It will be necessary to quote this number on electronic confirmations using IFTMBC.</i>	
X		1060	Revision identifier	C an..6

Group: **SGP** Segment Group 25: Split Goods Placement
Position: 1080
Group: Segment Group 16 (Goods Item Details) Conditional (Optional)
Level: 2
Usage: Conditional (Optional)
Max Use: 999
Purpose: A group of segments to specify the distribution of a goods item among the transport equipment.

Segment Summary						
User	Pos.	Seg.		Req.	Max.	
<u>Attribute</u>	<u>No.</u>	<u>ID</u>	<u>Name</u>	<u>Des.</u>	<u>Use</u>	<u>Repeat</u>
M	1090	SGP	Split Goods Placement	M	1	

Segment: **SGP** Split Goods Placement
Position: 1090 (Trigger Segment)
Group: Segment Group 25 (Split Goods Placement) Conditional (Optional)
Level: 2
Usage: Mandatory
Max Use: 1
Purpose: A segment to identify the equipment in which goods are transported.

Notes: *SGP segments should be used to refer each item (GID) to the relevant container (EQD), linking on (dummy) Equipment Identification Number (EQD C237.8260).*

Data Element Summary

User	Data	Component		Attributes	
<u>Attribute</u>	<u>Element</u>	<u>Element</u>	<u>Name</u>		
M	C237		EQUIPMENT IDENTIFICATION	M	1
R		8260	Equipment identifier	C	an..17
O		1131	Code list identification code	C	an..17
O		3055	Code list responsible agency code	C	an..3
O		3207	Country name code	C	an..3
O	7224		PACKAGE QUANTITY	C	1 n..8

Group: **DGS** Segment Group 27: Dangerous Goods
Position: 1130
Group: Segment Group 16 (Goods Item Details) Conditional (Optional)
Level: 2
Usage: Conditional (Dependent)
Max Use: 99
Purpose: A group of segments to specify dangerous goods details related to the goods item. One goods item may be in different dangerous goods classes.
Notes: *Use of the DGS Group is dependent. Its use is required for all hazardous goods items and it is not used for non-hazardous goods items.*

The minimum requirement for hazardous cargo is to send the information based on the IMD regulations. Details in accordance with other regulations may also be sent although the processing of this information will be at the recipients discretion. The information sent for any regulation should be complete and not rely on information sent as part of another regulation.

Please see following examples:

1.IMO2 UN1950 AEROSOLS in limited quantities less than 1 litre

*DGS+IMD+2::30+1950'
FTX+PSN+++AEROSOLS'
FTX+AAC++TLQ+LESS THAN 1 LITRE'*

2.IMO2.1 UN1950 AEROSOLS greater than 1 litre

*DGS+IMD+2.1::30+1950'
FTX+PSN+++AEROSOLS'
FTX+AAC+++GREATER THAN 1 LITRE'*

**3.IMO3 UN1993 PSN FLAMMABLE LIQUID NOS (ETHANOL) Marine pollutant
Flash point 20 DegC PACKING GROUP 2 EMS3-07 PSA2**

*DGS+IMD+3::30+1993+20:CEL+2+3-07'
FTX+PSN+++FLAMMABLE LIQUID NOS'
FTX+AAD+++ETHANOL'
FTX+AAC++P'
DGS+PSA+3+1993+20:CEL+2+3-07'
FTX+PSN+++FLAMMABLE LIQUID NOS'
FTX+AAD+++ETHANOL'
FTX+AAC++P'*

**4.IMO6.1 UN1994 SUB LABEL 3 IRON PENTACARBONYL Flash point -15 DegC
Pkg Group 1 EMS6.1-01 PSA2 Residue**

*DGS+IMD+6.1:3:30+1994+-15:CEL+1+6.1-01'
FTX+PSN+++IRON PENTACARBONYL'
FTX+AAC+++RESIDUE'
DGS+PSA+6.1:3+1994+-15:CEL+2+6.1-01'
FTX+PSN+++IRON PENTACARBONYL'
FTX+AAC+++RESIDUE'*

Segment Summary

User	Group:	Pos.	Seg.	Req.	Max.	
<u>Attribute</u>	<u>No.</u>	<u>ID</u>	<u>Name</u>	<u>Des.</u>	<u>Use</u>	<u>Repeat</u>
M	1140	DGS	Dangerous Goods	M	1	
R	1150	FTX	Free Text	C	99	
	1160		Segment Group 28: Contact Information	C	9	

Segment: **DGS** Dangerous Goods
Position: 1140 (Trigger Segment)
Group: Segment Group 27 (Dangerous Goods) Conditional (Dependent)
Level: 2
Usage: Mandatory
Max Use: 1
Purpose: A segment to indicate the class of dangerous goods, packing group, etc.
Notes: The current version of the document has concentrated on the use of this message within Europe, although we have included other region's issues where known. One outstanding issue is the need to include the ERAP (Emergency Response Assistance Planning number) which is required at the time of booking inland moves in Canada. Potentially this requirement can be covered using the IMDG code but this is subject to confirmation.

Data Element Summary

<u>User Attribute</u>	<u>Data Element</u>	<u>Component Element</u>	<u>Name</u>	<u>Attributes</u>
R	8273		DANGEROUS GOODS REGULATIONS CODE	C 1 an..3
			<i>IMDG code should be used at least..</i>	
			<i>Full code list to be reviewed, subject to international regulations.</i>	
			IMD	IMO IMDG code
			PSA	Port of Singapore Authority
R	C205		HAZARD CODE	C 1
M		8351	Hazard identification code	M an..7
			<i>NA number if DG regulation (8273) is 'CFR', otherwise IMO class</i>	
O		8078	Additional hazard classification identifier	C an..7
			<i>In case of multiple sub-labels these are to separated using '/'</i>	
O		8092	Hazard code version identifier	C an..10
			<i>For information only</i>	
			<i>To classify the IMO amendment version for the booking. This is important when there are two or more amendments running in parallel. 'Values and use to be mutually agreed between parties. We advise the use of the actual version e.g. 29, 30.</i>	
O	C234		UNDG INFORMATION	C 1
R		7124	United Nations Dangerous Goods (UNDG) identifier	C n4
X		7088	Dangerous goods flashpoint value	C an..8
O	C223		DANGEROUS GOODS SHIPMENT FLASHPOINT	C 1
O		7106	Shipment flashpoint value	C n3
			<i>Flashpoint temperatures should be stated to one decimal place.</i>	
O		6411	Measurement unit code	C an..3
			CEL	Celsius
O	8339		PACKAGING DANGER LEVEL CODE	C 1 an..3
			<i>IMO Packing group code in case of 8273 value IMD. In case of PSA regulations (8273 = PSA) this field is to be used to identify the PSA class.</i>	
O	8364		EMERGENCY PROCEDURE FOR SHIPS IDENTIFIER	C 1 an..6
O	8410		HAZARD MEDICAL FIRST AID GUIDE IDENTIFIER	C 1 an..4
X	8126		TRANSPORT EMERGENCY CARD IDENTIFIER	C 1 an..10
X	C235		HAZARD IDENTIFICATION PLACARD DETAILS	C 1
X		8158	Orange hazard placard upper part identifier	C an..4
X		8186	Orange hazard placard lower part identifier	C an4

O	C236	DANGEROUS GOODS LABEL	C	1
O		8246 Dangerous goods marking identifier	C	an..4
O		8246 Dangerous goods marking identifier	C	an..4
O		8246 Dangerous goods marking identifier	C	an..4
O	8255	PACKING INSTRUCTION TYPE CODE <i>Codes to be used still undefined.</i>	C	1 an..3
X	8325	HAZARDOUS MEANS OF TRANSPORT CATEGORY CODE	C	1 an..3
X	8211	HAZARDOUS CARGO TRANSPORT AUTHORISATION CODE	C	1 an..3

Segment: **FTX** Free Text
Position: 1150
Group: Segment Group 27 (Dangerous Goods) Conditional (Dependent)
Level: 3
Usage: Conditional (Required)
Max Use: 99
Purpose: A segment to specify the dangerous goods technical name and to specify any additional dangerous goods information.

Notes: *To specify the DG technical name, Proper shipping name and supplementary hazardous information which relates to the goods item specified in the preceding GID segment. It should be used at least once to provide the Proper Shipping Name..*

Set "AAC" when the DG item is Marine Pollutant. For DG that is a potential Marine pollutant this FTX should always be made to explicitly declare whether or not the substance is a marine pollutant.

In case of DG of Marine Pollutant and Limited Quantity, FTX segment can be repeated if necessary.

Example:

*FTX+AAC++TLQ+ETHANOL'
 FTX+AAC++P'*

The FTX segment with qualifier "AAC" can also be used to supply any other relevant textual information.

Example:

*DGS+IMD+I.4.:30+0012'
 FTX+PSN+++CARTRIDGES FOR WEAPONS,INERT PROJECTILE'
 FTX+AAC+++IMPORT EXPORT LICENCES VALID.END USER CERTIFICATE HELD:12MM CALIBRE.TRANSIT SIN CONFIRMED.SURVEY ARRANGED.'*

Version 1.3

The FTX segment with qualifier "AAC" can also be used to supply the Segregation Group in a structured way.

Example:

*DGS+IMD+8+1760++III+F-AS-B'
 FTX+AAD+++CORROSIVE LIQUID, N.O.S. (Phosphoric acid)'
 FTX+AAC++P'
 FTX+AAC++SEG+IMDG Code segregation group -:I Acids'*

Version 1.3.1

The FTX segment with qualifier "AAC" can also be used to supply the UNNO Suffix. The UNNO Suffix is a 4-character variant code that describes different combinations of classes, sub-classes, packing groups and technical names for a UN No. Such coding exists for example for UNNO 1950 or UNNO 2734.

The code is followed by a 5-digit numeric version code.

The Coded Variant List is provided by Exis Technologies, please contact: support@existec.com

Example for code '0B0A' and version '36000' :

FTX+AAC++UNNOSUFFIX+0B0A:36000'

Data Element Summary

User	Data	Component			Attributes
<u>Attribute</u>	<u>Element</u>	<u>Element</u>	<u>Name</u>		
M	4451		TEXT SUBJECT CODE QUALIFIER		M 1 an..3
			AAC	Dangerous goods additional information	
			AAD	Dangerous goods, technical name	

PSN

Proper Shipping Name

For the DG booking both Technical name and proper shipping name are required. It is also important to differentiate between these entities. For that reason we need a new FTX qualifier, provisionally set to PSN.

This treatment differs from the IFTDGN guidelines from the PROTECT group which place both Proper Shipping Name and Technical Name in the same AAD segment. The ambiguity of this situation is considered unacceptable for the controlling of DG bookings.

X	4453	FREE TEXT FUNCTION CODE	C	1	an..3
O	C107	TEXT REFERENCE	C	1	
M	4441	Free text value code	M		an..17
		<i>NP Not Marine Polutant</i>			
		<i>P Marine Pollutant</i>			
		<i>SEG IMDG Code Segregation Group</i>			
		<i>TLQ Transport of dangerous goods in limited quantities</i>			
		<i>UNNOSUFFIX</i>			
		<i>UN No. Suffix</i>			
X	1131	Code list identification code	C		an..17
X	3055	Code list responsible agency code	C		an..3
O	C108	TEXT LITERAL	C	1	
		<i>May be used for free text remarks in conjunction with qualifier 'AAC'</i>			
M	4440	Free text value	M		an..70
		<i>Maximum length reduced to size of older directories</i>			
		<i>If C107-4441 contains 'SEG' then this field must mandatory contain in exact syntax: IMDG Code Segregation Group -</i>			
		<i>If C107-4441 contains ' UNNOSUFFIX ' then this field must contain the 4-character expression of the UNNO Suffix code, for example: 0B0A</i>			
O	4440	Free text value	C		an..70
		<i>Maximum length reduced to size of older directories</i>			
		<i>If C107-4441 contains 'SEG' then this field must contain the IMDG Code Segregation Group. Example: 1 Acids 2 Ammonium Compounds 3 Bromates 4 Chlorates 5 Chlorites ...</i>			
		<i>If C107-4441 contains ' UNNOSUFFIX ' then this field must contain the 5-digit numeric version code, for example: 36000</i>			
O	4440	Free text value	C		an..70
		<i>Maximum length reduced to size of older directories</i>			
O	4440	Free text value	C		an..70
		<i>Maximum length reduced to size of older directories</i>			
O	4440	Free text value	C		an..70

Maximum length reduced to size of older directories

X	3453	LANGUAGE NAME CODE	C	1 an..3
O	4447	FREE TEXT FORMAT CODE	C	1 an..3

Group: CTA Segment Group 28: Contact Information
Position: 1160
Group: Segment Group 27 (Dangerous Goods) Conditional (Dependent)
Level: 3
Usage: Conditional (Optional)
Max Use: 9
Purpose: A group of segments to identify a contact to whom communication regarding the dangerous goods can be directed.

				Segment Summary		
User	Pos.	Seg.		Req.	Max.	
<u>Attribute</u>	<u>Group:</u> <u>No.</u>	<u>ID</u>	<u>Name</u>	<u>Des.</u>	<u>Use</u>	<u>Repeat</u>
M	1170	CTA	Contact Information	M		1
R	1180	COM	Communication Contact	C		9

Segment: **CTA** **Contact Information**
Position: 1170 (Trigger Segment)
Group: Segment Group 28 (Contact Information) Conditional (Optional)
Level: 3
Usage: Mandatory
Max Use: 1
Purpose: A segment to identify a person or department.
Notes: *Emergency contact details as provided by the shipper.*

Version 1.3

The CTA segment can be used to specify the phone number, the name and a reference for both the main emergency contact and the alternative emergency contact.

Example:

CTA+HE+ABS19875:DOW'
COM+8005554328:TE'
CTA+HE+R-2563-FO-5:SCHMITZ'
COM+7135550815:AJ'

which means:

Main Emergency Contact:

Name=DOW Reference=ABS19875 Phone Number=8005554328

Alternative Emergency Contact:

Name=SCHMITZ Reference= R-2563-FO-5 Phone Number=7135550815

Data Element Summary

<u>User</u>	<u>Data</u>	<u>Component</u>	<u>Name</u>	<u>Attributes</u>
<u>Attribute</u>	<u>Element</u>	<u>Element</u>		
O	3139		CONTACT FUNCTION CODE	C 1 an..3
			<i>HE Emergency dangerous goods contact</i>	
R	C056		DEPARTMENT OR EMPLOYEE DETAILS	C 1
O		3413	Department or employee name code	C an..17
			<i>Emergency Contact Reference</i>	
R		3412	Department or employee name	C an..35

Segment: **COM** Communication Contact
Position: 1180
Group: Segment Group 28 (Contact Information) Conditional (Optional)
Level: 4
Usage: Conditional (Required)
Max Use: 9
Purpose: A segment to identify a communication number of a person or department.

Data Element Summary

<u>User</u>	<u>Data</u>	<u>Component</u>	<u>Name</u>	<u>Attributes</u>
<u>Attribute</u>	<u>Element</u>	<u>Element</u>		
M	C076		COMMUNICATION CONTACT	M 1
M		3148	Communication address identifier	M an..512
<i>General Recommendation JM4/16 stipulates that communication numbers are to be transmitted without spaces or hyphens. Telephone and fax numbers should include country codes.</i>				
M		3155	Communication address code qualifier	M an..3
		AJ	Alternate telephone	
<i>The alternative number can be used to specify limited availability numbers such as freephone numbers, which would not work outside the country where they are located.</i>				
		TE	Telephone	

Group: **EQD** Segment Group 32: Equipment Details
Position: 1270
Group:
Level: 1
Usage: Conditional (Optional)
Max Use: 999
Purpose: A group of segments to specify equipment in which goods are transported.
Notes: *Not used for Cancel message (BGM:1225 = 1)*
Must be used in all other cases.

				Segment Summary		
User	Pos.	Seg.		Req.	Max.	
<u>Attribute</u>	<u>Group:</u> <u>No.</u>	<u>ID</u>	<u>Name</u>	<u>Des.</u>	<u>Use</u>	<u>Repeat</u>
M	1280	EQD	Equipment Details	M	1	
O	1290	EQN	Number of Units	C	1	

Segment: **EQD** Equipment Details
Position: 1280 (Trigger Segment)
Group: Segment Group 32 (Equipment Details) Conditional (Optional)
Level: 1
Usage: Mandatory
Max Use: 1
Purpose: A segment to specify equipment, and equipment size and type used in the transport.

Data Element Summary

<u>User</u>	<u>Data</u>	<u>Component</u>	<u>Name</u>	<u>Attributes</u>
<u>Attribute</u>	<u>Element</u>	<u>Element</u>		
M	8053		EQUIPMENT TYPE CODE QUALIFIER	M 1 an..3
			<i>BB Breakbulk (non standard code)</i>	
			<i>CN Container</i>	
O	C237		EQUIPMENT IDENTIFICATION	C 1
R		8260	Equipment identifier	C an..17
			<i>(or sequence number)</i>	
X		1131	Code list identification code	C an..17
X		3055	Code list responsible agency code	C an..3
X		3207	Country name code	C an..3
O	C224		EQUIPMENT SIZE AND TYPE	C 1
O		8155	Equipment size and type description code	C an..10
			<i>ISO type/size code. Leave blank if unknown, expand specific code with 9's for generic values. E.g. 2999 is 20' container. (Same as for BAPLIE)</i>	
O		1131	Code list identification code	C an..17
			<i>102 Size and type</i>	
O		3055	Code list responsible agency code	C an..3
			<i>5 ISO (International Organization for Standardization)</i>	
O		8154	Equipment size and type description	C an..35
			<i>Both OLD and NEW ISO-SIZE-TYPE code is allowed</i>	
X	8077		EQUIPMENT SUPPLIER CODE	C 1 an..3
X	8249		EQUIPMENT STATUS CODE	C 1 an..3
X	8169		FULL OR EMPTY INDICATOR CODE	C 1 an..3

Segment: **EQN** Number of Units
Position: 1290
Group: Segment Group 32 (Equipment Details) Conditional (Optional)
Level: 2
Usage: Conditional (Optional)
Max Use: 1
Purpose: A segment to specify number of pieces of equipment required.

Data Element Summary

<u>User</u>	<u>Data</u>	<u>Component</u>	<u>Name</u>	<u>Attributes</u>
<u>Attribute</u>	<u>Element</u>	<u>Element</u>		
M	C523		NUMBER OF UNIT DETAILS	M 1
O		6350	Units quantity	C n..15
			<i>In case of Multiple DG's stuffed in Multiple containers it is recommended to limit this EQN to 1.</i>	
X		6353	Unit type code qualifier	C an..3

Segment: UNT Message Trailer
Position: 1500
Group:
Level: 0
Usage: Mandatory
Max Use: 1
Purpose: A service segment ending a message, giving the total number of segments in the message (including the UNH & UNT) and the control reference number of the message.

Data Element Summary

<u>Attribute</u>	<u>Data Element</u>	<u>Component Element</u>	<u>Name</u>	<u>Attributes</u>
M	0074		NUMBER OF SEGMENTS IN A MESSAGE	M 1 n..6
M	0062		MESSAGE REFERENCE NUMBER	M 1 an..14