



210115/13:55 (print date/time)

RFR

DRAFT

USER MANUAL
(IMPLEMENTATION GUIDE)

UN/EDIFACT INVOIC MESSAGE

INVOIC

Version 1.0

D00B

Version : 1.0.0/D00B
Date : 10/2014
Source : SMDG User Group for Shipping Lines and Container Terminals

© SMDG

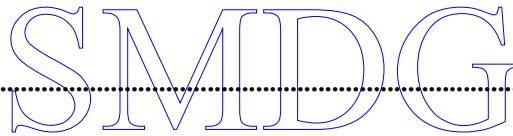
Information in this document is subject to change without notice.

The SMDG claims full copyright to this manual and its contents, however, the manual may be copied and used by anyone, without the consent of SMDG.

It is not allowed to change the contents of this manual!

CONTENTS

1.	ADDRESSES	2
2.	VERSIONS	3
3.	SEGMENT USAGE	5
Example messages		89
Invoice		89
Credit Period Invoice:		90
Credit Invoice:		91
Overtime Invoice:		92
Reefer Invoice:		93
Storage Invoice:		94
Stripping Invoice:		96



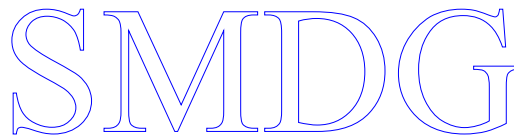
1. ADDRESSES

Any remarks, comments or questions can be addressed to one of the following addresses:

SMDG Secretariat
c/o ECT
P.O.Box 7400
3000 HK Rotterdam
The Netherlands
Phone: 31-10-4916075
Fax: 31-10-4916865
Email: Secretariat@smdg.org
Website: www.smdg.org

or to any active member of the SMDG. See the member pages on our website for email addresses.

Any remarks or questions can also be placed on our forum: go to www.smdg.org and select “forum”.

A large, blue, outlined version of the SMDG logo, where the letters are hollow and the outlines are thick.

2. VERSIONS

Data elements, composites and segments of the **UN/Edifact directory D00B (July 2000)** are used in this manual.

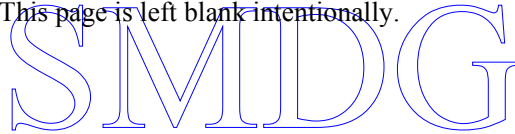
Codes and qualifiers used, are according to **UN/EDIFACT Directory D00B Code List**.

In some occasions, however, the required code or qualifier could not be found in the code list. In such cases a temporary code was assigned, awaiting the final code allocation from the UN/Edifact Board Code commission.

This version 3.0 is based upon the previous version 2.0 with some adjustments, corrections and improvements, as proposed by the members of SMDG.

SMDG

This page is left blank intentionally.

A large, light blue watermark of the letters 'SMDG' is centered on the page. The letters are in a serif font and are semi-transparent, allowing the text from the previous block to be seen through them.

3. SEGMENT USAGE
Invoice Message

Introduction:

A message claiming payment for goods or services supplied under conditions agreed between the seller and the buyer.

The United Nations Standard Invoice Message, with correct data qualification, serves also as the specification for Debit Note and Credit Note messages. Throughout this document, the reference to 'Invoice' may be interpreted as conveying the wider meaning of 'Invoice/Credit Note/Debit Note'.

Heading Section:

<u>Page No.</u>	<u>Pos. No.</u>	<u>Seg. ID</u>	<u>Name</u>	<u>Base Guide</u>	<u>User Status</u>	<u>Max.Use</u>	<u>Group Repeat</u>	<u>Notes and Comments</u>
24	0005	UNB	Interchange Header	C	C	1		
25	0010	UNH	Message Header	M	M	1		
26	0020	BGM	Beginning of Message	M	M	1		
27	0030	DTM	Date/Time/Period	M	M	35		
	0040	PAI	Payment Instructions	C	Not Used	1		
	0050	ALI	Additional Information	C	Not Used	5		
	0060	IMD	Item Description	C	Not Used	1		
	0070	FTX	Free Text	C	Not Used	99		
	0080	LOC	Place/Location Identification	C	Not Used	10		
	0090	GIS	General Indicator	C	Not Used	10		
	0100	DGS	Dangerous Goods	C	Not Used	1		
	0110	GIR	Related Identification Numbers	C	Not Used	10		
	0120		Segment Group 1: RFF-DTM-GIR-LOC-MEA-QTY-FTX-MOA-RTE	C	D		99999	
29	0130	RFF	Reference	M	M	1		
30	0140	DTM	Date/Time/Period	C	C	5		
	0150	GIR	Related Identification Numbers	C	Not Used	5		
	0160	LOC	Place/Location Identification	C	Not Used	2		
	0170	MEA	Measurements	C	Not Used	5		
	0180	QTY	Quantity	C	Not Used	2		
	0190	FTX	Free Text	C	Not Used	5		
	0200	MOA	Monetary Amount	C	Not Used	2		
	0210	RTE	Rate Details	C	Not Used	99		
	0220		Segment Group 2: NAD-LOC-FII-MOA-SG3-SG4-SG5	C	C		99	
32	0230	NAD	Name and Address	M	M	1		
	0240	LOC	Place/Location Identification	C	Not Used	25		
34	0250	FII	Financial Institution Information	C	C	5		
35	0260	MOA	Monetary Amount	C	C	99		
	0270		Segment Group 3: RFF-DTM	C	C		9999	
37	0280	RFF	Reference	M	M	1		
	0290	DTM	Date/Time/Period	C	Not Used	5		

	0300		Segment Group 4: DOC-DTM	C	Not Used	5
	0310	DOC	Document/Message Details	M	Not Used	1
	0320	DTM	Date/Time/Period	C	Not Used	5
	0330		Segment Group 5: CTA-COM	C	C	5
39	0340	CTA	Contact Information	M	M	1
40	0350	COM	Communication Contact	C	C	5
	0360		Segment Group 6: TAX-MOA-LOC	C	C	5
42	0370	TAX	Duty/Tax/Fee Details	M	M	1
43	0380	MOA	Monetary Amount	C	C	1
	0390	LOC	Place/Location Identification	C	Not Used	5
	0400		Segment Group 7: CUX-DTM	C	C	99
45	0410	CUX	Currencies	M	M	1
	0420	DTM	Date/Time/Period	C	Not Used	5
	0430		Segment Group 8: PAT-DTM-PCD-MOA-PAI-FII	O	C	10
47	0440	PAT	Payment Terms Basis	M	M	1
48	0450	DTM	Date/Time/Period	O	C	5
49	0460	PCD	Percentage Details	O	C	1
50	0470	MOA	Monetary Amount	O	C	1
	0480	PAI	Payment Instructions	C	Not Used	1
	0490	FII	Financial Institution Information	C	Not Used	1
	0500		Segment Group 9: TDT-TSR-SG10-SG11	C	C	10
52	0510	TDT	Details of Transport	M	M	1
	0520	TSR	Transport Service Requirements	C	Not Used	1
	0530		Segment Group 10: LOC-DTM	C	C	10
55	0540	LOC	Place/Location Identification	M	M	1
56	0550	DTM	Date/Time/Period	C	C	5
	0560		Segment Group 11: RFF-DTM	C	C	9999
58	0570	RFF	Reference	M	M	1
	0580	DTM	Date/Time/Period	C	Not Used	5
	0590		Segment Group 12: TOD-LOC	C	Not Used	5
	0600	TOD	Terms of Delivery or Transport	M	Not Used	1
	0610	LOC	Place/Location Identification	C	Not Used	2
	0620		Segment Group 13: EQD-SEL	C	Not Used	99
	0630	EQD	Equipment Details	M	Not Used	1
	0640	SEL	Seal Number	C	Not Used	9
	0650		Segment Group 14: PAC-MEA-EQD-SG15	C	Not Used	1000
	0660	PAC	Package	M	Not Used	1
	0670	MEA	Measurements	C	Not Used	5
	0680	EQD	Equipment Details	C	Not Used	1
	0690		Segment Group 15: PCI-RFF-DTM-GIN	C	Not Used	5
	0700	PCI	Package Identification	M	Not Used	1
	0710	RFF	Reference	C	Not Used	1
	0720	DTM	Date/Time/Period	C	Not Used	5
	0730	GIN	Goods Identity Number	C	Not Used	5

0740		Segment Group 16: ALC-ALI-FTX-SG17-SG18-SG19-SG20-SG21-SG22	C	Not Used	9999
0750	ALC	Allowance or Charge	M	Not Used	1
0760	ALI	Additional Information	C	Not Used	5
0770	FTX	Free Text	C	Not Used	1
0780		Segment Group 17: RFF-DTM	C	Not Used	5
0790	RFF	Reference	M	Not Used	1
0800	DTM	Date/Time/Period	C	Not Used	5
0810		Segment Group 18: QTY-RNG	C	Not Used	1
0820	QTY	Quantity	M	Not Used	1
0830	RNG	Range Details	C	Not Used	1
0840		Segment Group 19: PCD-RNG	C	Not Used	1
0850	PCD	Percentage Details	M	Not Used	1
0860	RNG	Range Details	C	Not Used	1
0870		Segment Group 20: MOA-RNG-CUX-DTM	C	Not Used	2
0880	MOA	Monetary Amount	M	Not Used	1
0890	RNG	Range Details	C	Not Used	1
0900	CUX	Currencies	C	Not Used	1
0910	DTM	Date/Time/Period	C	Not Used	1
0920		Segment Group 21: RTE-RNG	C	Not Used	1
0930	RTE	Rate Details	M	Not Used	1
0940	RNG	Range Details	C	Not Used	1
0950		Segment Group 22: TAX-MOA	C	Not Used	5
0960	TAX	Duty/Tax/Fee Details	M	Not Used	1
0970	MOA	Monetary Amount	C	Not Used	1
0980		Segment Group 23: RCS-RFF-DTM-FTX	C	Not Used	100
0990	RCS	Requirements and Conditions	M	Not Used	1
1000	RFF	Reference	C	Not Used	5
1010	DTM	Date/Time/Period	C	Not Used	5
1020	FTX	Free Text	C	Not Used	5
1030		Segment Group 24: AJT-FTX	C	Not Used	1
1040	AJT	Adjustment Details	M	Not Used	1
1050	FTX	Free Text	C	Not Used	5
1060		Segment Group 25: INP-FTX	C	Not Used	1
1070	INP	Parties and Instruction	M	Not Used	1
1080	FTX	Free Text	C	Not Used	5

Detail Section:

<u>Page No.</u>	<u>Pos. No.</u>	<u>Seg. ID</u>	<u>Name</u>	<u>Base Guide</u>	<u>User Status</u>	<u>Max.Use</u>	<u>Group Repeat</u>	<u>Notes and Comments</u>
	1090		Segment Group 26: LIN-PIA-PGI-IMD-MEA-QTY-PCD-ALI-DTM-GIN-GIR-QVR-EQD-FTX-DGS-SG27-SG28-SG29-SG30-SG31-SG33-SG34-SG35-SG39-SG45-SG47-SG48-SG49	C	C		9999999	
60	1100	LIN	Line Item	M	M	1		

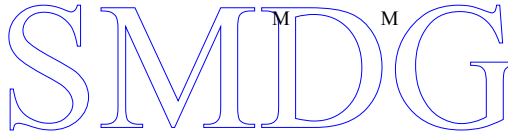
	1110	PIA	Additional Product Id	C	Not Used	25
	1120	PGI	Product Group Information	C	Not Used	99
61	1130	IMD	Item Description	C	C	99
	1140	MEA	Measurements	C	Not Used	5
62	1150	QTY	Quantity	C	C	5
	1160	PCD	Percentage Details	C	Not Used	1
	1170	ALI	Additional Information	C	Not Used	5
63	1180	DTM	Date/Time/Period	C	C	35
	1190	GIN	Goods Identity Number	C	Not Used	1000
	1200	GIR	Related Identification Numbers	C	Not Used	1000
	1210	QVR	Quantity Variances	C	Not Used	1
64	1220	EQD	Equipment Details	C	C	1
	1230	FTX	Free Text	C	Not Used	99
	1240	DGS	Dangerous Goods	C	Not Used	1
	1250	Segment Group 27: MOA-CUX		C	C	99
67	1260	MOA	Monetary Amount	M	M	1
	1270	CUX	Currencies	C	Not Used	1
	1280	Segment Group 28: PAT-DTM-PCD-MOA		C	Not Used	10
	1290	PAT	Payment Terms Basis	M	Not Used	1
	1300	DTM	Date/Time/Period	C	Not Used	5
	1310	PCD	Percentage Details	C	Not Used	99
	1320	MOA	Monetary Amount	C	Not Used	1
	1330	Segment Group 29: PRI-CUX-APR-RNG-DTM		C	C	25
69	1340	PRI	Price Details	M	M	1
	1350	CUX	Currencies	C	Not Used	1
	1360	APR	Additional Price Information	C	Not Used	1
	1370	RNG	Range Details	C	Not Used	1
	1380	DTM	Date/Time/Period	C	Not Used	5
	1390	Segment Group 30: RFF-DTM		C	C	10
71	1400	RFF	Reference	M	M	1
	1410	DTM	Date/Time/Period	C	Not Used	5
	1420	Segment Group 31: PAC-MEA-EQD-SG32		C	Not Used	10
	1430	PAC	Package	M	Not Used	1
	1440	MEA	Measurements	C	Not Used	10
	1450	EQD	Equipment Details	C	Not Used	1
	1460	Segment Group 32: PCI-RFF-DTM-GIN		C	Not Used	10
	1470	PCI	Package Identification	M	Not Used	1
	1480	RFF	Reference	C	Not Used	1
	1490	DTM	Date/Time/Period	C	Not Used	5
	1500	GIN	Goods Identity Number	C	Not Used	10
	1510	Segment Group 33: LOC-QTY-DTM		C	Not Used	9999
	1520	LOC	Place/Location Identification	M	Not Used	1
	1530	QTY	Quantity	C	Not Used	100
	1540	DTM	Date/Time/Period	C	Not Used	5
	1550	Segment Group 34: TAX-MOA-LOC		C	Not Used	99

	1560	TAX	Duty/Tax/Fee Details	M	Not Used	1
	1570	MOA	Monetary Amount	C	Not Used	2
	1580	LOC	Place/Location Identification	C	Not Used	5
	1590		Segment Group 35: NAD-LOC-FII-SG36-SG37-SG38	C	Not Used	99
	1600	NAD	Name and Address	M	Not Used	1
	1610	LOC	Place/Location Identification	C	Not Used	5
	1620	FII	Financial Institution Information	C	Not Used	5
	1630		Segment Group 36: RFF-DTM	C	Not Used	5
	1640	RFF	Reference	M	Not Used	1
	1650	DTM	Date/Time/Period	C	Not Used	5
	1660		Segment Group 37: DOC-DTM	C	Not Used	5
	1670	DOC	Document/Message Details	M	Not Used	1
	1680	DTM	Date/Time/Period	C	Not Used	5
	1690		Segment Group 38: CTA-COM	C	Not Used	5
	1700	CTA	Contact Information	M	Not Used	1
	1710	COM	Communication Contact	C	Not Used	5
	1720		Segment Group 39: ALC-ALI-DTM-FTX-SG40-SG41-SG42-SG43-SG44	C	C	30
73	1730	ALC	Allowance or Charge	M	M	1
	1740	ALI	Additional Information	C	Not Used	5
	1750	DTM	Date/Time/Period	C	Not Used	5
	1760	FTX	Free Text	C	Not Used	1
	1770		Segment Group 40: QTY-RNG	C	C	1
75	1780	QTY	Quantity	M	M	1
	1790	RNG	Range Details	C	Not Used	1
	1800		Segment Group 41: PCD-RNG	C	C	1
77	1810	PCD	Percentage Details	M	M	1
	1820	RNG	Range Details	C	Not Used	1
	1830		Segment Group 42: MOA-RNG-CUX-DTM	C	C	2
79	1840	MOA	Monetary Amount	M	M	1
	1850	RNG	Range Details	C	Not Used	1
	1860	CUX	Currencies	C	Not Used	1
	1870	DTM	Date/Time/Period	C	Not Used	1
	1880		Segment Group 43: RTE-RNG	C	Not Used	1
	1890	RTE	Rate Details	M	Not Used	1
	1900	RNG	Range Details	C	Not Used	1
	1910		Segment Group 44: TAX-MOA	C	Not Used	5
	1920	TAX	Duty/Tax/Fee Details	M	Not Used	1
	1930	MOA	Monetary Amount	C	Not Used	2
	1940		Segment Group 45: TDT-SG46	C	Not Used	10
	1950	TDT	Details of Transport	M	Not Used	1
	1960		Segment Group 46: LOC-DTM	C	Not Used	10
	1970	LOC	Place/Location Identification	M	Not Used	1
	1980	DTM	Date/Time/Period	C	Not Used	5
	1990		Segment Group 47: TOD-LOC	C	Not Used	5

2000	TOD	Terms of Delivery or Transport	M	Not Used	1
2010	LOC	Place/Location Identification	C	Not Used	2
<hr/>					
2020		Segment Group 48: RCS-RFF-DTM-FTX	C	Not Used	100
2030	RCS	Requirements and Conditions	M	Not Used	1
2040	RFF	Reference	C	Not Used	5
2050	DTM	Date/Time/Period	C	Not Used	5
2060	FTX	Free Text	C	Not Used	5
<hr/>					
2070		Segment Group 49: GIS-RFF-DTM-GIR-LOC-MEA-QTY-FTX-MOA	C	Not Used	10
2080	GIS	General Indicator	M	Not Used	1
2090	RFF	Reference	C	Not Used	1
2100	DTM	Date/Time/Period	C	Not Used	5
2110	GIR	Related Identification Numbers	C	Not Used	5
2120	LOC	Place/Location Identification	C	Not Used	2
2130	MEA	Measurements	C	Not Used	5
2140	QTY	Quantity	C	Not Used	2
2150	FTX	Free Text	C	Not Used	5
2160	MOA	Monetary Amount	C	Not Used	2

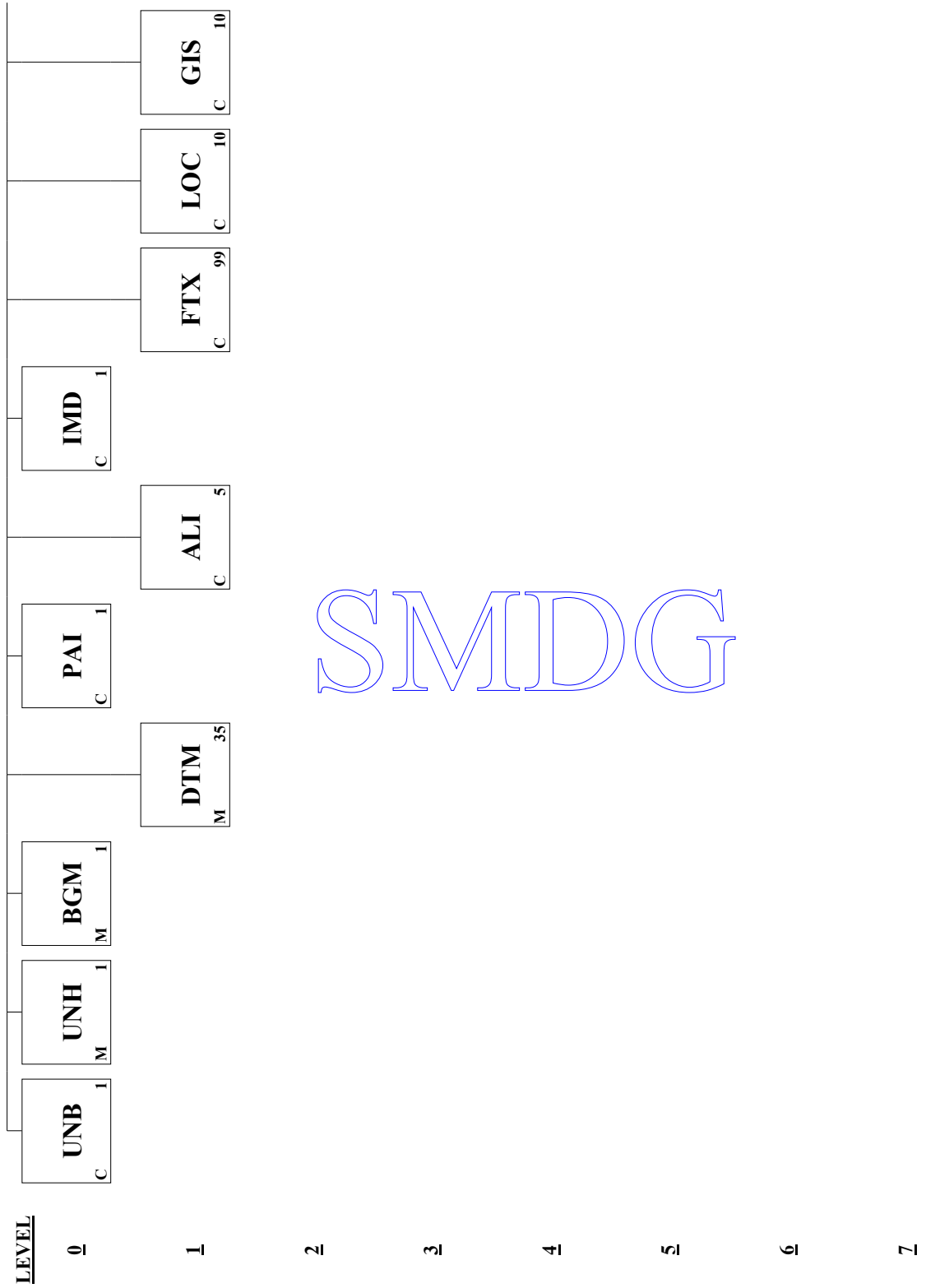
Section Control:

<u>Page No.</u>	<u>Pos. No.</u>	<u>Seg. ID</u>	<u>Name</u>	<u>Base Guide</u>	<u>User Status</u>	<u>Max.Use</u>	<u>Group Repeat</u>	<u>Notes and Comments</u>
80	2170	UNS	Section Control	M	M	1		

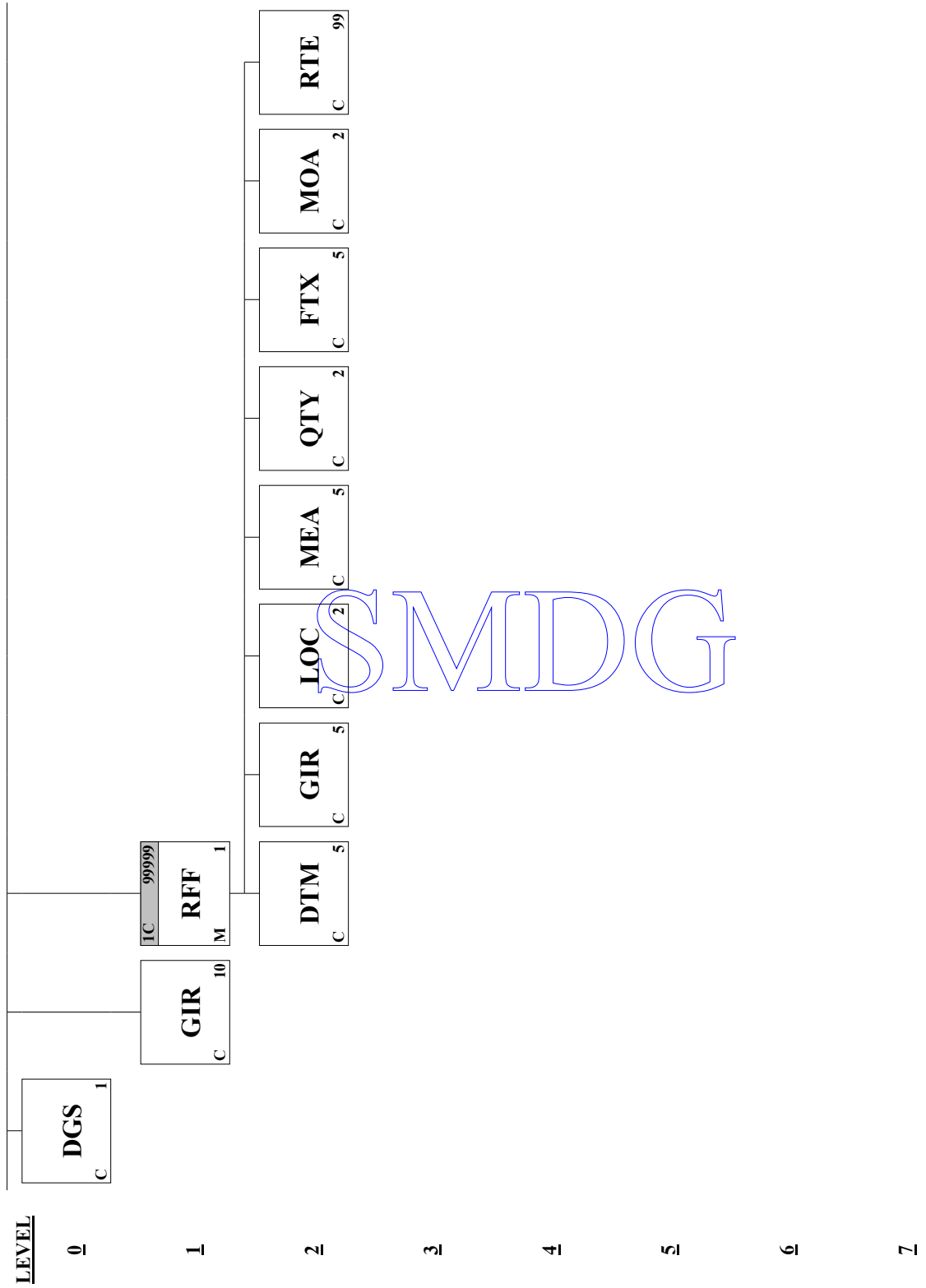


Summary Section:

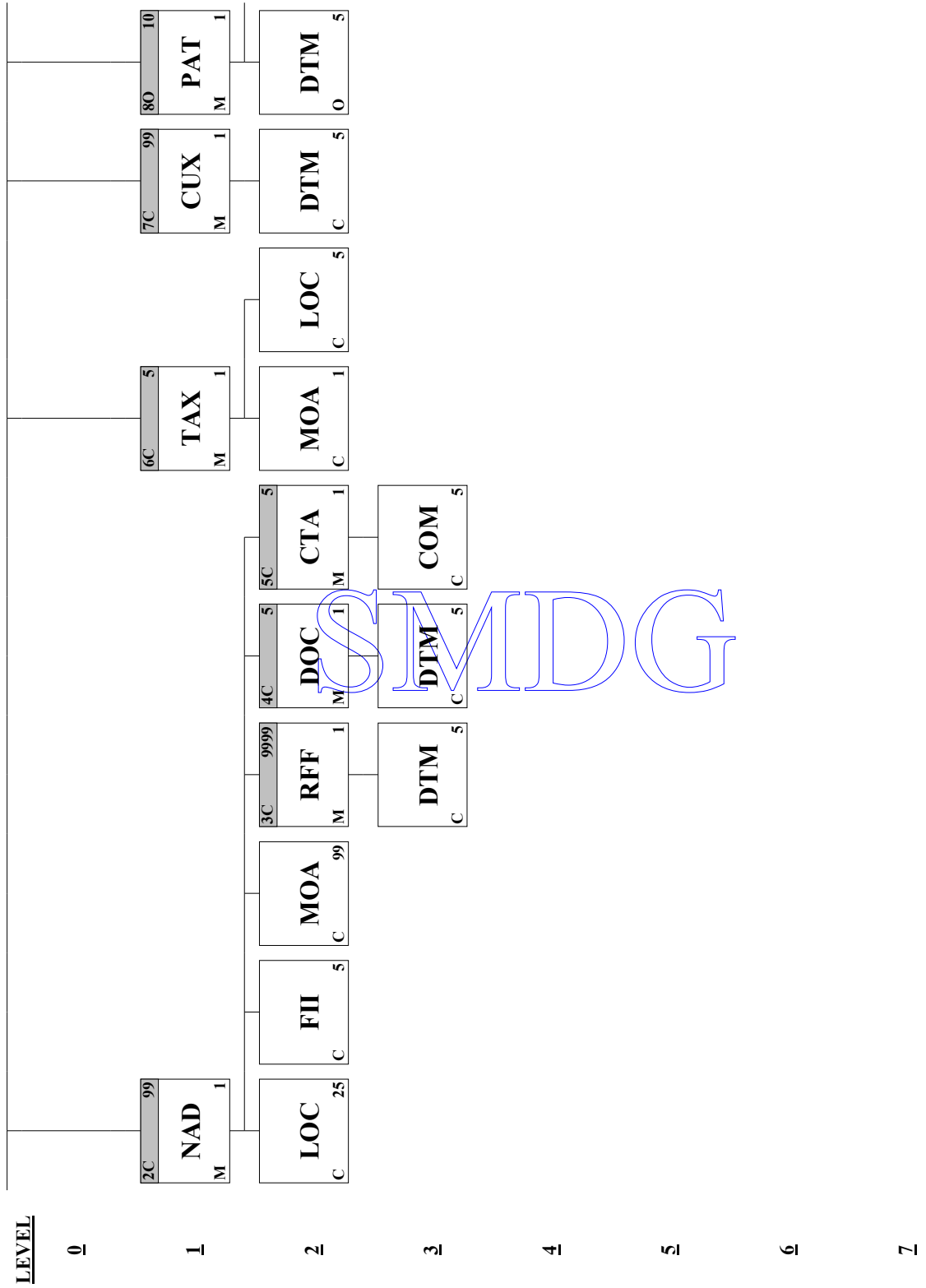
<u>Page No.</u>	<u>Pos. No.</u>	<u>Seg. ID</u>	<u>Name</u>	<u>Base Guide</u>	<u>User Status</u>	<u>Max.Use</u>	<u>Group Repeat</u>	<u>Notes and Comments</u>
81	2180	CNT	Control Total	C	C	10		
<hr/>								
	2190		Segment Group 50: MOA-SG51	M	M	100		
83	2200	MOA	Monetary Amount	M	M	1		
<hr/>								
	2210		Segment Group 51: RFF-DTM	C	C	1		
85	2220	RFF	Reference	M	M	1		
86	2230	DTM	Date/Time/Period	C	C	5		
<hr/>								
	2240		Segment Group 52: TAX-MOA	C	Not Used	10		
	2250	TAX	Duty/Tax/Fee Details	M	Not Used	1		
	2260	MOA	Monetary Amount	C	Not Used	2		
<hr/>								
	2270		Segment Group 53: ALC-ALI-MOA-FTX	C	Not Used	15		
	2280	ALC	Allowance or Charge	M	Not Used	1		
	2290	ALI	Additional Information	C	Not Used	1		
	2300	MOA	Monetary Amount	C	Not Used	2		
	2310	FTX	Free Text	C	Not Used	1		
<hr/>								
87	2320	UNT	Message Trailer	M	M	1		
88	2330	UNZ	Interchange Trailer	C	C	1		

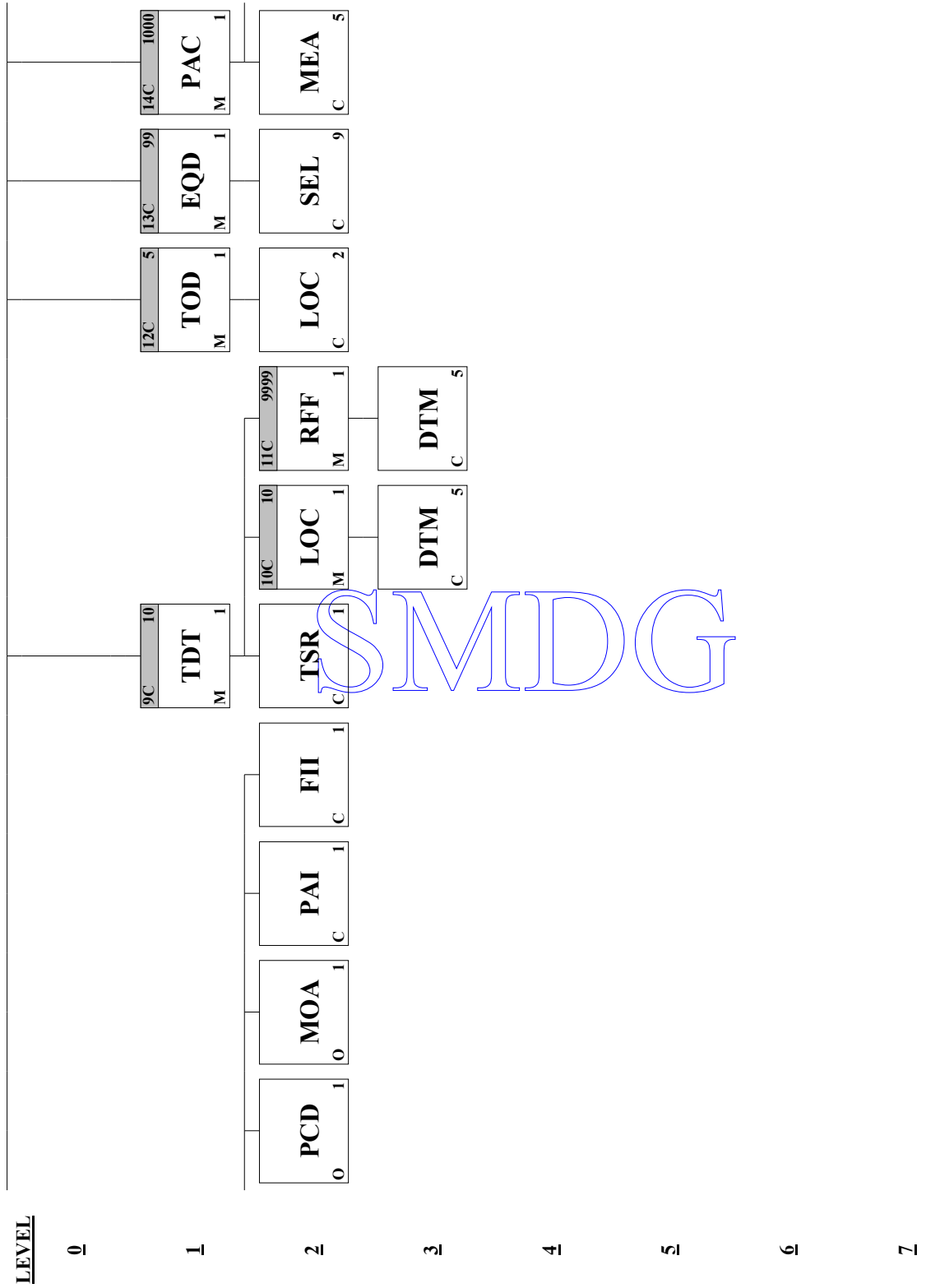


SMDG

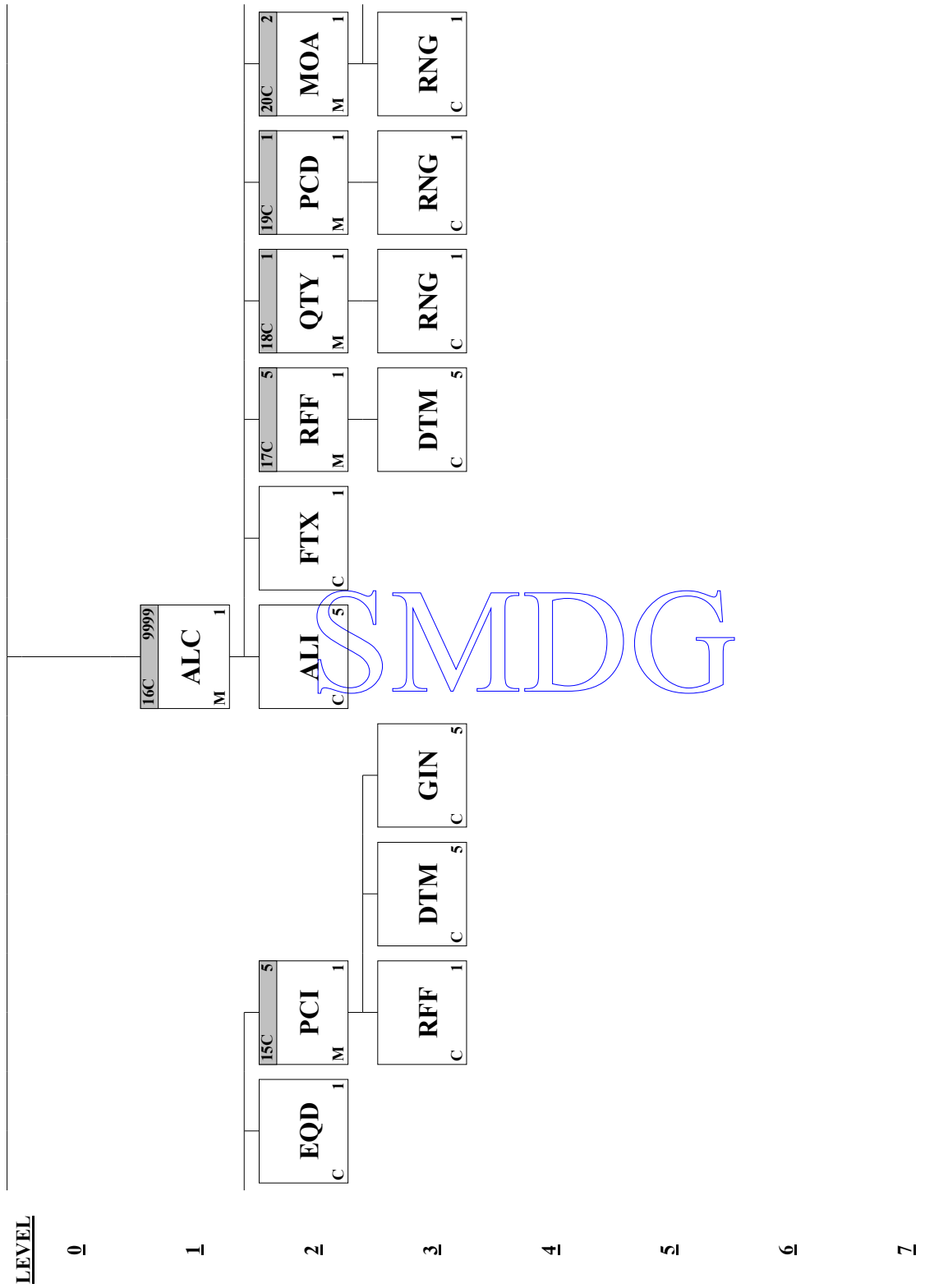


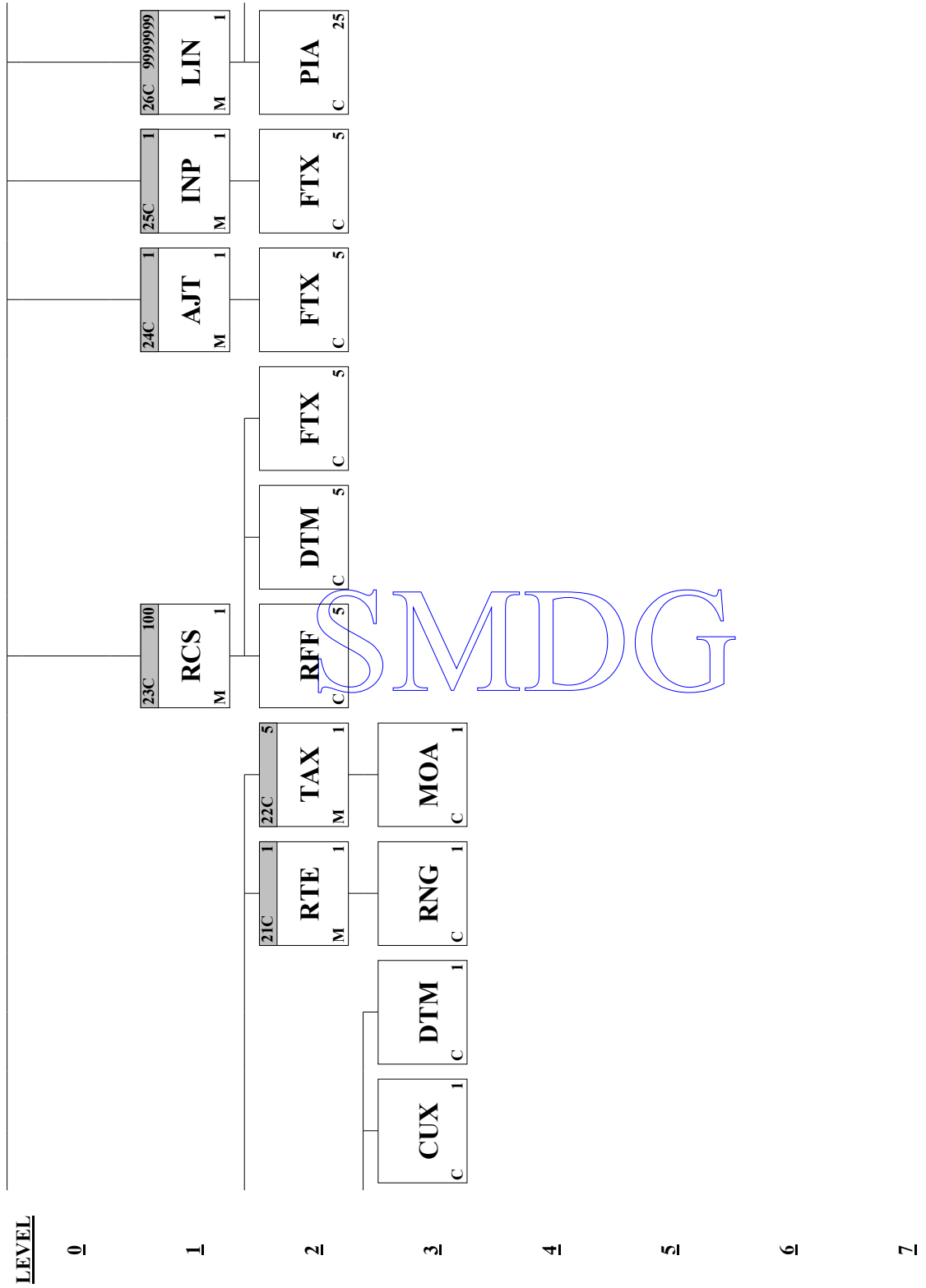
SMDG





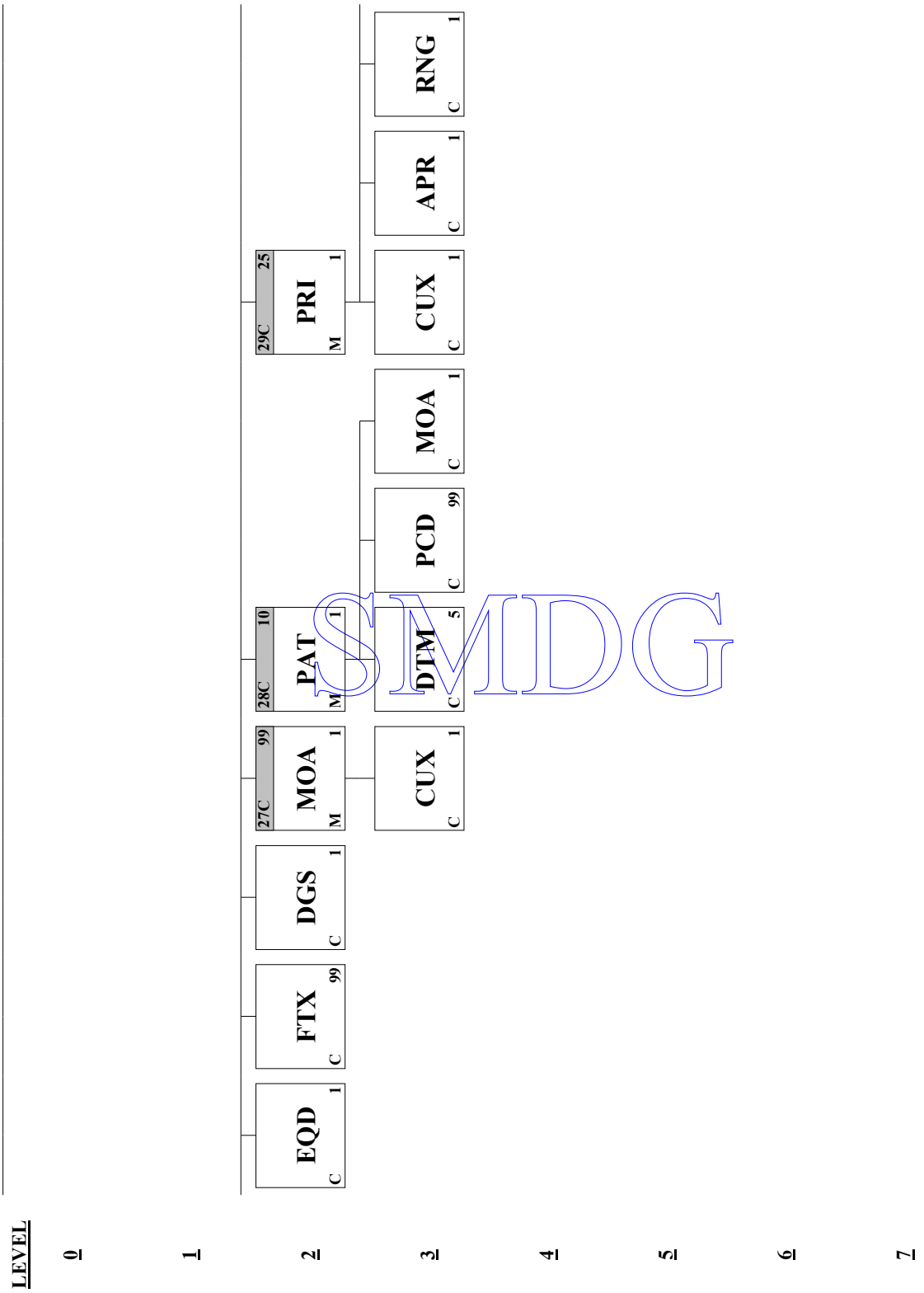
SMDG

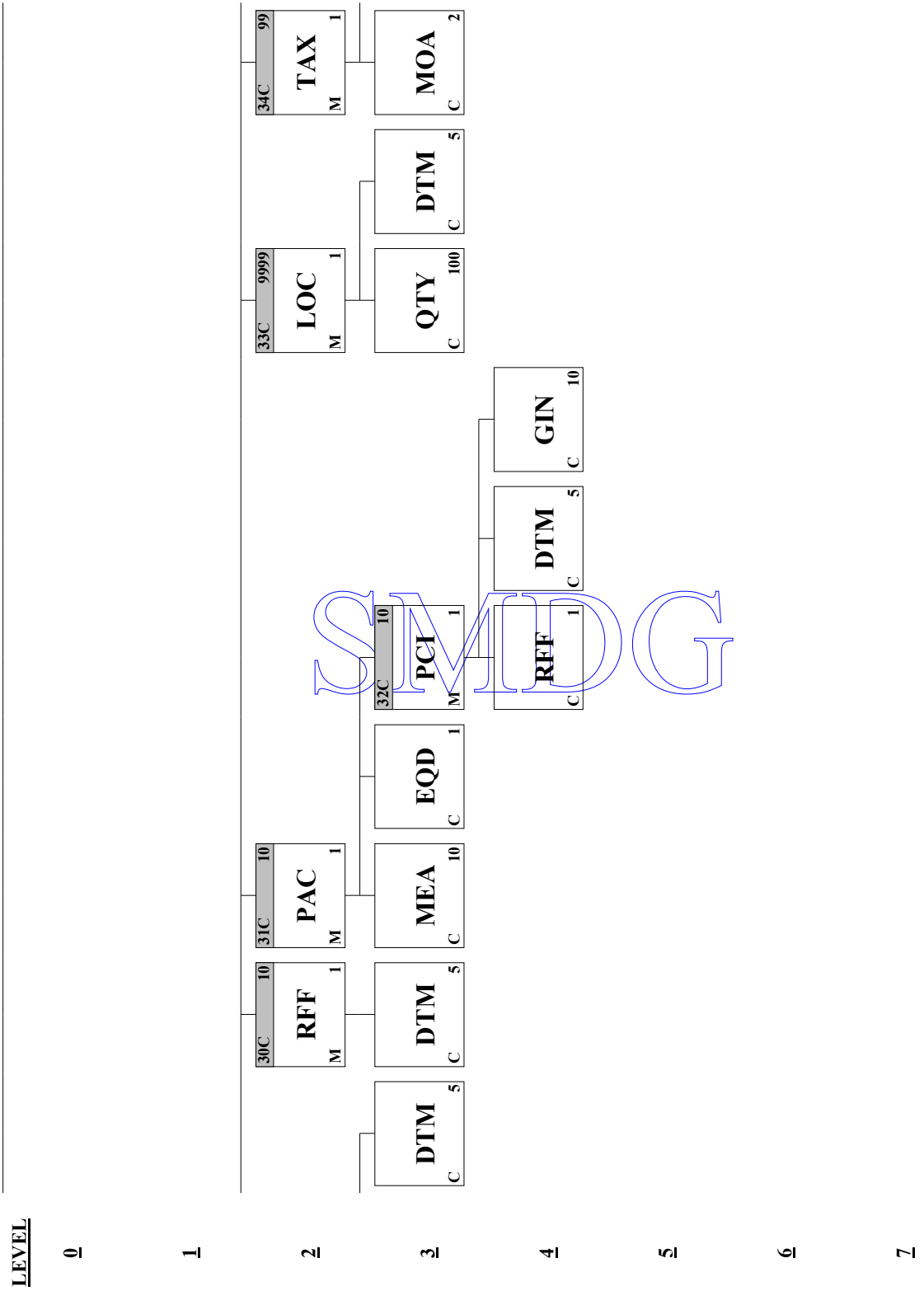


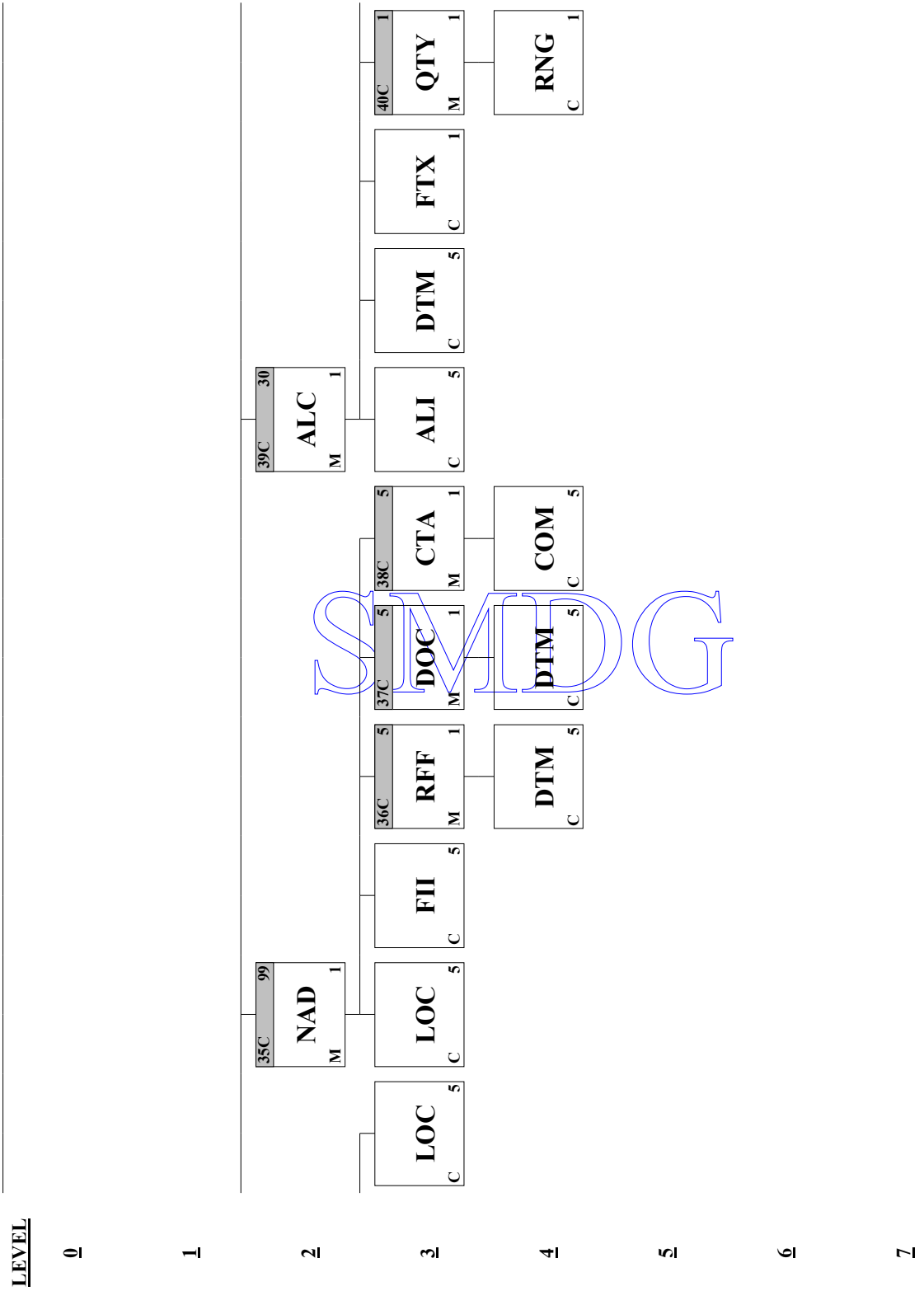


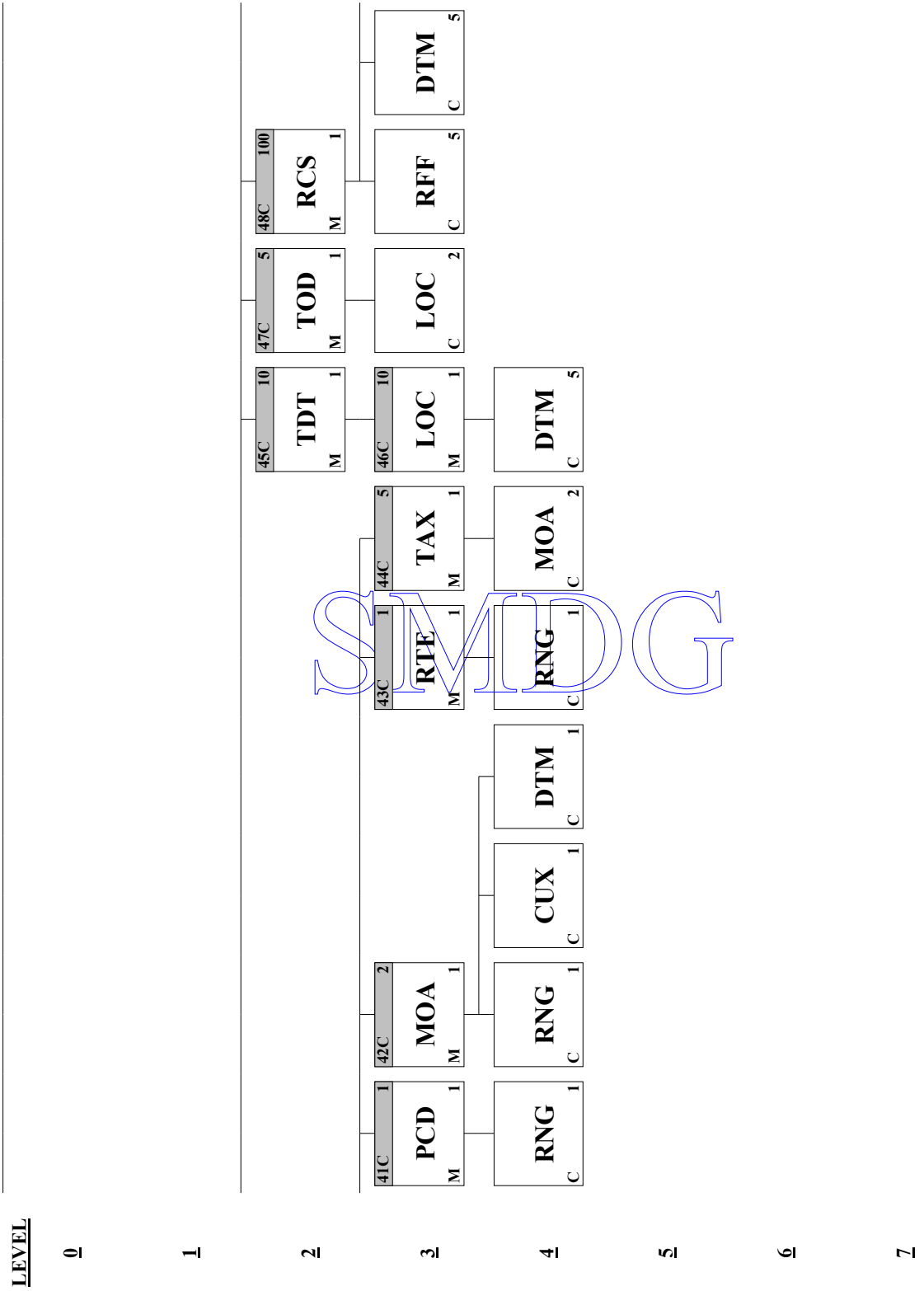
<u>LEVEL</u>																				
0																				
1																				
2																				
3																				
4																				
5																				
6																				
7																				

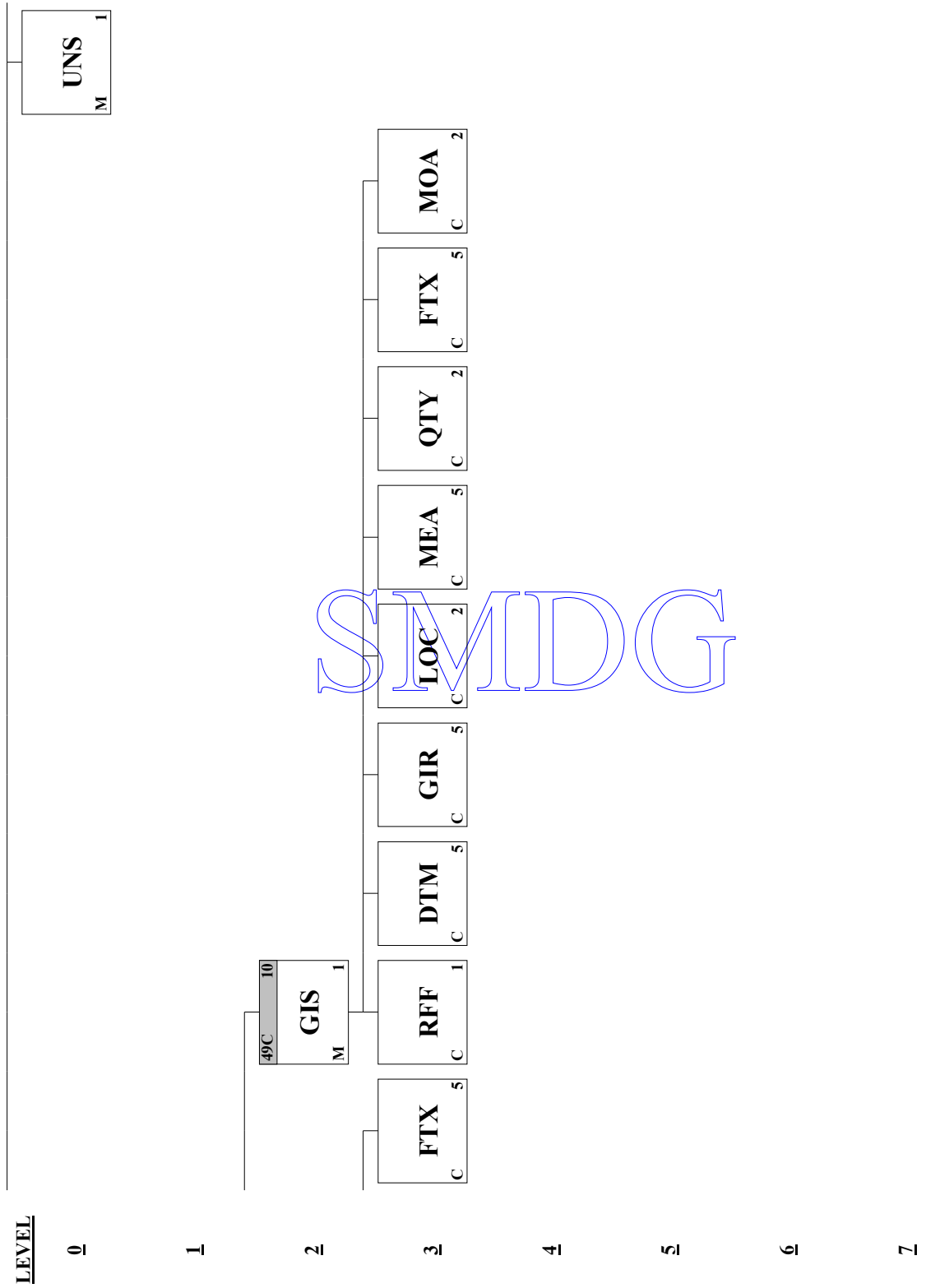
SMDG



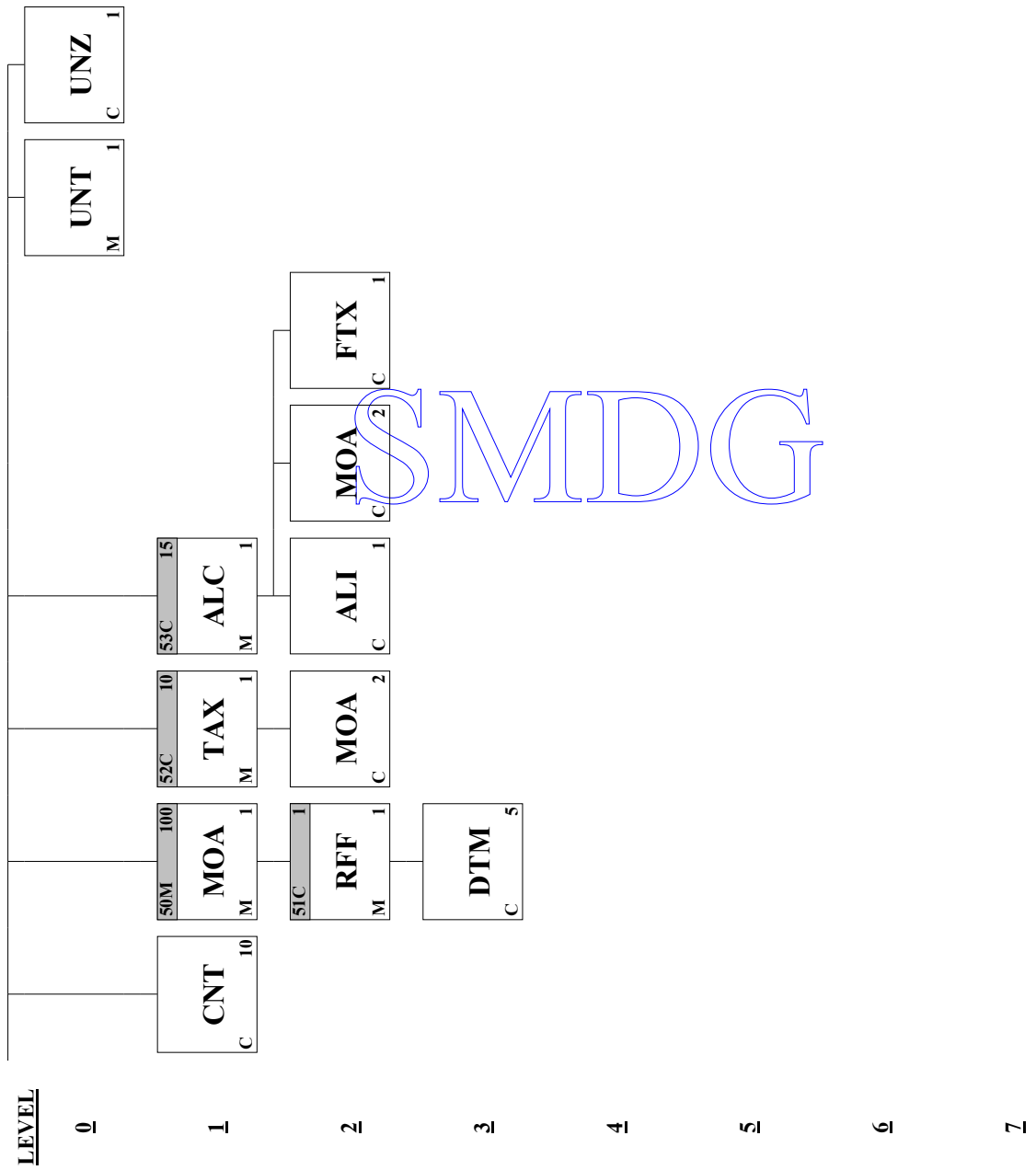








SMDG



Segment: **UNB** Interchange Header
Position: 0005
Group:
Level: 0
Usage: Conditional
Max Use: 1
Purpose: To start, identify and specify an interchange
Notes: This segment is used to start, identify and specify an interchange

Example:

UNB+UNOA:2+SNDR+RECV+070620:1018+12345678'

Data Element Summary

<u>Data Element</u>	<u>Component Element</u>	<u>Name</u>	<u>Base Attributes</u>	<u>User Attributes</u>
S001		SYNTAX IDENTIFIER	M 1	M
		Identification of the agency controlling the syntax and indication of syntax level.		
	0001	Syntax identifier	M a4	M
		Coded identification of the agency controlling a syntax and syntax level used in an interchange.		
		UNOA UN/ECE level A		
	0002	Syntax version number	M n1	M
		Version number of the syntax identified in the syntax identifier (0001).		
		2 Version 2		
S002		INTERCHANGE SENDER	M 1	M
		Identification of the sender of the interchange.		
	0004	Sender identification	M an..35	M
		Name or coded representation of the sender of a data interchange.		
S003		INTERCHANGE RECIPIENT	M 1	M
		Identification of the recipient of the interchange.		
	0010	Recipient identification	M an..35	M
		Name or coded representation of the recipient of a data interchange.		
S004		DATE AND TIME OF PREPARATION	M 1	M
		Date and time of preparation of the interchange.		
	0017	Date of preparation	M n6	M
		Local date when an interchange or a functional group was prepared.		
	0019	Time of preparation	M n4	M
		Local time of day when an interchange or a functional group was prepared.		
0020		INTERCHANGE CONTROL REFERENCE	M 1 an..14	M
		Unique reference assigned by the sender to an interchange.		

Segment: UNH Message Header
Position: 0010
Group:
Level: 0
Usage: Must Use
Max Use: 1
Purpose: A service segment starting and uniquely identifying a message. The message type code for the Invoice message is INVOIC.
 Note: Invoice messages conforming to this document must contain the following data in segment UNH, composite S009:
 Data element 0065 INVOIC 0052 D 0054 00B 0051 UN
Notes: This segment is used to head, identify and specify a message.

Example:
 UNH+123456789+INVOIC:D:00B:UN:SMDG10'

Data Element Summary

Data Element	Component Element	Name	Base Attributes	User Attributes
0062		MESSAGE REFERENCE NUMBER	M 1 an..14	M
		Unique message reference assigned by the sender.		
S009		MESSAGE IDENTIFIER	M 1	M
		Identification of the type, version etc. of the message being interchanged.		
0065		Message type identifier	M an..6	M
		Code identifying a type of message and assigned by its controlling agency.		
		INVOIC Invoice message		
0052		Message type version number	M an..3	M
		Version number of a message type.		
		D Draft version/UN/EDIFACT Directory		
0054		Message type release number	M an..3	M
		Release number within the current message type version number (0052).		
		00B Release 2000 - B		
0051		Controlling agency	M an..2	M
		Code identifying the agency controlling the specification, maintenance and publication of the message type.		
		UN UN/CEFACT		
0057		Association assigned code	C an..6	R
		Code, assigned by the association responsible for the design and maintenance of the message type concerned, which further identifies the message.		
		SMDG10		

Segment: **BGM** Beginning of Message
Position: 0020
Group:
Level: 0
Usage: Must Use
Max Use: 1
Purpose: A segment by which the sender must uniquely identify the invoice by means of its type and number and when necessary its function.
Notes: This segment is used to indicate the type and function of a message and to transmit the identifying number.

 Example:
 For Debit invoice BGM+383+12345678+9'
 For Credit invoice BGM+381+12345678+9"

Data Element Summary

<u>Data Element</u>	<u>Component Element</u>	<u>Name</u>	<u>Base Attributes</u>	<u>User Attributes</u>
C002		DOCUMENT/MESSAGE NAME Identification of a type of document/message by code or name. Code preferred.	C 1	
	1001	Document name code Code specifying the document name. 381 Credit note 383 Debit note	C an..3	
C106		DOCUMENT/MESSAGE IDENTIFICATION Identification of a document/message by its number and eventually its version or revision.	C 1	
	1004	Document identifier To identify a document.	C an..35	R
1225		MESSAGE FUNCTION CODE Code indicating the function of the message. 1 Cancellation 5 Replace 9 Original	C 1 an..3	R

Segment: **DTM** Date/Time/Period
Position: 0030
Group:
Level: 1
Usage: Must Use
Max Use: 35
Purpose: A segment specifying general dates and, when relevant, times related to the whole message. The segment must be specified at least once to identify the invoice date. Examples of the use of this DTM segment is: "shipped on date" or "delivery date". The Date/time/period segment within other Segment groups should be used whenever the date/time/period requires to be logically related to another specified data item e.g. Payment due date is specified within the PAT Segment group.
Notes: This DTM is used for dates which apply to the entire message.
 Example:
 DTM+137:200705241720:203'

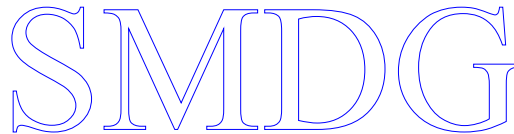
Data Element Summary

<u>Data Element</u>	<u>Component Element</u>	<u>Name</u>	<u>Base Attributes</u>	<u>User Attributes</u>
C507		DATE/TIME/PERIOD Date and/or time, or period relevant to the specified date/time/period type.	M 1	M
	2005	Date or time or period function code qualifier Code qualifying the function of a date, time or period. 137 Document/message date/time	M an..3	M
	2380	Date or time or period value The value of a date, a date and time, a time or of a period in a specified representation.	C an..35	R
	2379	Date or time or period format code Code specifying the representation of a date, time or period. 203 CCYYMMDDHHMM	C an..3	R

Group: **RFF** Segment Group 1: Reference
Position: 0120
Group:
Level: 1
Usage: Dependent
Max Use: 99999
Purpose: A group of segments for giving references and where necessary, their dates, related identification numbers, locations, measurements, quantities, free text and monetary amounts, relating to the whole message, e.g. contract information, import or export license information, despatch advice information.

Segment Summary

	<u>Pos.</u>	<u>Seg.</u>		<u>Req.</u>	<u>Max.</u>	<u>Group:</u>
	<u>No.</u>	<u>ID</u>	<u>Name</u>	<u>Des.</u>	<u>Use</u>	<u>Repeat</u>
M	0130	RFF	Reference	M	1	
C	0140	DTM	Date/Time/Period	C	5	



Segment: **RFF** Reference
Position: 0130 (Trigger Segment)
Group: Segment Group 1 (Reference) Dependent
Level: 1
Usage: Dependent
Max Use: 1
Purpose: A segment identifying the reference by its number and where appropriate a line number within a document.
Notes: This segment is used to specify references which relate to the whole invoices.
 Example:
 RFF+IV:12345678'

Data Element Summary

<u>Data Element</u>	<u>Component Element</u>	<u>Name</u>	<u>Base Attributes</u>	<u>User Attributes</u>
C506		REFERENCE Identification of a reference.	M 1	M
	1153	Reference code qualifier Code qualifying a reference.	M an..3	M
		ACW Reference number to previous message ACW is only used when de1225 not equals to '9'. General Recommendation D4/G4 stipulates a recommended methodology for references of this kind.		
		IV Invoice number		
		OI Previous invoice number		
		ON Order number (purchase)		
1154		Reference identifier Identifies a reference.	C an..70	R

Segment: **DTM** Date/Time/Period
Position: 0140
Group: Segment Group 1 (Reference) Dependent
Level: 2
Usage: Conditional
Max Use: 5
Purpose: A segment specifying the date/time related to the reference.
Notes:

Example:
 DTM+3:20010320:102'

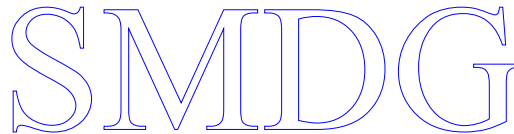
Data Element Summary

<u>Data Element</u>	<u>Component Element</u>	<u>Name</u>	<u>Base Attributes</u>		<u>User Attributes</u>
C507		DATE/TIME/PERIOD	M	1	M
		Date and/or time, or period relevant to the specified date/time/period type.			
	2005	Date or time or period function code qualifier	M	an..3	M
		Code qualifying the function of a date, time or period.			
		3 Invoice date/time			
		13 Terms net due date			
		263 Invoicing period			
		265 Due date			
	2380	Date or time or period value	C	an..35	R
		The value of a date, a date and time, a time or of a period in a specified representation.			
	2379	Date or time or period format code	C	an..3	R
		Code specifying the representation of a date, time or period.			
		102 CCYYMMDD			
		711 CCYYMMDD-CCYYMMDD			

Group: **NAD** Segment Group 2: Name and Address
Position: 0220
Group:
Level: 1
Usage: Conditional
Max Use: 99
Purpose: A group of segments identifying the parties with associated information.

Segment Summary

	<u>Pos. No.</u>	<u>Seg. ID</u>	<u>Name</u>	<u>Req. Des.</u>	<u>Max. Use</u>	<u>Group: Repeat</u>
M	0230	NAD	Name and Address	M	1	
C	0250	FII	Financial Institution Information	C	5	
C	0260	MOA	Monetary Amount	C	99	
	0270		Segment Group 3: Reference	C		9999
	0330		Segment Group 5: Contact Information	C		5



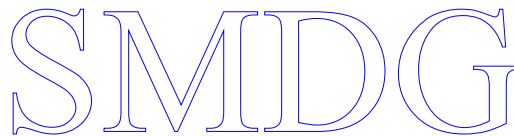
Segment: **NAD** Name and Address
Position: 0230 (Trigger Segment)
Group: Segment Group 2 (Name and Address) Optional
Level: 1
Usage: Must Use
Max Use: 1
Purpose: A segment identifying names and addresses of the parties, in coded or clear form, and their functions relevant to the invoice. Identification of the seller and buyer parties is mandatory for the invoice message. It is recommended that where possible only the coded form of the party ID should be specified e.g. The Buyer and Seller are known to each other, thus only the coded ID is required, but the Consignee or Delivery address may vary and would have to be clearly specified, preferably in structured format.

Notes: Example:
 NAD+IV+ABCU:160:20'
 NAD+MS+1234567++Terminal+P.O. Box 1234+City++PostalCode'
 NAD+MR+4321569++Line+P.O.Box 5678+City++PostalCode'

Data Element Summary

Data Element	Component Element	Name	Base Attributes	User Attributes
3035		PARTY FUNCTION CODE QUALIFIER	M 1 an..3	M
		Code giving specific meaning to a party.		
		IV Invoicee		
		MR Message recipient		
		MS Document/message issuer/sender		
C082		PARTY IDENTIFICATION DETAILS	C 1	R
		Identification of a transaction party by code.		
3039		Party identifier	M an..35	M
		Code specifying the identity of a party.		
		Company Code		
1131		Code list identification code	C an..17	
		Code identifying a code list.		
		160 Party identification		
3055		Code list responsible agency code	C an..3	
		Code specifying the agency responsible for a code list.		
		20 BIC (Bureau International des Containeurs)		
		166 US, National Motor Freight Classification Association		
		184 AU, ACOS (Australian Chamber of Shipping)		
		213 JP, NACCS Center (Nippon Automated Cargo Clearance System Operations Organization)		
		ZZZ Mutually defined		
C058		NAME AND ADDRESS	C 1	X
C080		PARTY NAME	C 1	
		Identification of a transaction party by name, one to five lines. Party name may be formatted.		
3036		Party name	M an..35	M
		Name of a party.		
3036		Party name	C an..35	

	Name of a party.				
C059	STREET	C	1		
	Street address and/or PO Box number in a structured address: one to four lines.				
	3042 Street and number or post office box identifier	M	an..35		M
	To identify a street and number and/or Post Office box number.				
	3042 Street and number or post office box identifier	C	an..35		
	To identify a street and number and/or Post Office box number.				
3164	CITY NAME	C	1 an..35		
	Name of a city.				
C819	COUNTRY SUB-ENTITY DETAILS	C	1		X
3251	POSTAL IDENTIFICATION CODE	C	1 an..17		
	Code specifying the postal zone or address.				
3207	COUNTRY NAME CODE	C	1 an..3		
	Identification of the name of the country or other geographical entity as specified in ISO 3166.				



Segment: **FII** **Financial Institution Information**
Position: 0250
Group: Segment Group 2 (Name and Address) Optional
Level: 2
Usage: Conditional
Max Use: 5
Purpose: A segment identifying the financial institution (e.g. bank) and relevant account numbers for the seller, buyer and where necessary other parties.
Notes: Example:
 FII+RB+<IBAN Number:Terminal bv>+<S.W.I.F.T. code>:25:17:::Bank name:City'

Data Element Summary

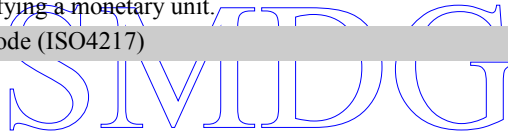
<u>Data Element</u>	<u>Component Element</u>	<u>Name</u>	<u>Base Attributes</u>	<u>User Attributes</u>
3035		PARTY FUNCTION CODE QUALIFIER Code giving specific meaning to a party. PB Paying financial institution RB Receiving financial institution	M 1 an..3	M
C078		ACCOUNT HOLDER IDENTIFICATION Identification of an account holder by account number and/or account holder name in one or two lines. Number preferred.	C 1	
	3194	Account holder identifier To identify the holder of an account.	C an..35	
	3192	Account holder name Name of the holder of an account.	C an..35	
C088		INSTITUTION IDENTIFICATION Identification of a financial institution by code branch number, or name and name of place. Code or branch number preferred.	C 1	
	3433	Institution name code Code specifying the name of an institution.	C an..11	
	1131	Code list identification code Code identifying a code list. 25 Bank identification	C an..17	
	3055	Code list responsible agency code Code specifying the agency responsible for a code list. 17 S.W.I.F.T.	C an..3	
	3434	Institution branch identifier	C an..17	X
	1131	Code list identification code	C an..17	X
	3055	Code list responsible agency code	C an..3	X
	3432	Institution name Name of an institution.	C an..70	
	3436	Institution branch location name Name of the location of a branch of an institution.	C an..70	
3207		COUNTRY NAME CODE Identification of the name of the country or other geographical entity as specified in ISO 3166.	C 1 an..3	

Segment: **MOA** Monetary Amount
Position: 0260
Group: Segment Group 2 (Name and Address) Optional
Level: 2
Usage: Conditional
Max Use: 99
Purpose: A segment specifying the monetary amount associated with the party being defined (e.g. the amount to be paid to the party in question).

Notes: Example:
 MOA+39:1243.45:EUR'

Data Element Summary

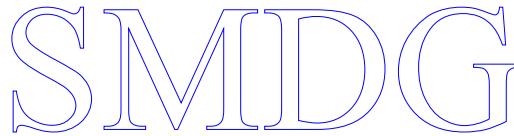
<u>Data Element</u>	<u>Component Element</u>	<u>Name</u>	<u>Base Attributes</u>	<u>User Attributes</u>
C516		MONETARY AMOUNT Amount of goods or services stated as a monetary amount in a specified currency.	M 1	M
	5025	Monetary amount type code qualifier Code qualifying the type of monetary amount.	M an..3	M
		9 Amount due/amount payable		
		39 Invoice total amount		
	5004	Monetary amount To specify a monetary amount.	C n..35	R
	6345	Currency identification code Code specifying a monetary unit. Currency code (ISO4217)	C an..3	R



Group: **RFF** Segment Group 3: Reference
Position: 0270
Group: Segment Group 2 (Name and Address) Optional
Level: 2
Usage: Conditional
Max Use: 9999
Purpose: A group of segment for giving references only relevant to the specified party rather than the whole invoice.

Segment Summary

	<u>Pos.</u>	<u>Seg.</u>		<u>Req.</u>	<u>Max.</u>	<u>Group:</u>
	<u>No.</u>	<u>ID</u>	<u>Name</u>	<u>Des.</u>	<u>Use</u>	<u>Repeat</u>
M	0280	RFF	Reference	M	1	



Segment: **RFF** Reference
Position: 0280 (Trigger Segment)
Group: Segment Group 3 (Reference) Optional
Level: 2
Usage: Must Use
Max Use: 1
Purpose: A segment identifying the reference by its number and where appropriate a line number within a document.
Notes: Example:
 RFF+VA+VR12345'
 RFF+AHO:1239876'

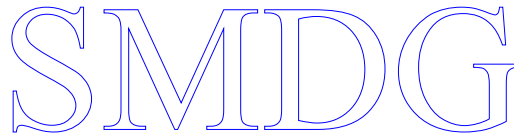
Data Element Summary

<u>Data Element</u>	<u>Component Element</u>	<u>Name</u>	<u>Base Attributes</u>	<u>User Attributes</u>
C506		REFERENCE Identification of a reference.	M 1	M
	1153	Reference code qualifier Code qualifying a reference. AAE Goods declaration number ABE Declarant's reference number ACD Additional reference number ADE Account number ADZ Trader account number AHO Chamber of Commerce registration number VA VAT registration number VC Vendor contract number XA Company/place registration number	M an..3	M
	1154	Reference identifier Identifies a reference.	C an..70	R

Group: **CTA** Segment Group 5: Contact Information
Position: 0330
Group: Segment Group 2 (Name and Address) Optional
Level: 2
Usage: Conditional
Max Use: 5
Purpose: A group of segments giving contact details of the specific person or department within the party identified in the NAD segment.

Segment Summary

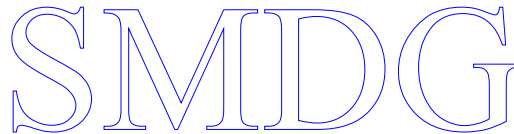
	<u>Pos.</u>	<u>Seg.</u>		<u>Req.</u>	<u>Max.</u>	<u>Group:</u>
	<u>No.</u>	<u>ID</u>	<u>Name</u>	<u>Des.</u>	<u>Use</u>	<u>Repeat</u>
M	0340	CTA	Contact Information	M		1
C	0350	COM	Communication Contact	C		5



Segment: **CTA Contact Information**
Position: 0340 (Trigger Segment)
Group: Segment Group 5 (Contact Information) Optional
Level: 2
Usage: Must Use
Max Use: 1
Purpose: A segment to identify a person or department, and their function, to whom communications should be directed.
Notes: Example:
 CTA+IC+:ACCOUNTING DEP'

Data Element Summary

<u>Data Element</u>	<u>Component Element</u>	<u>Name</u>	<u>Base Attributes</u>	<u>User Attributes</u>
3139		CONTACT FUNCTION CODE	C 1 an..3	R
		Code specifying the function of a contact (e.g. department or person).		
		IC Information contact		
C056		DEPARTMENT OR EMPLOYEE DETAILS	C 1	R
		Code and/or name of a department or employee. Code preferred.		
	3413	Department or employee name code	C an..17	X
	3412	Department or employee name	C an..35	R
		Name of a department or employee.		

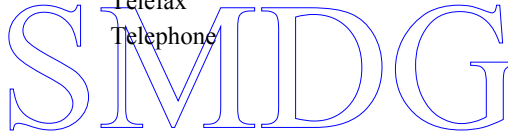


Segment: **COM** Communication Contact
Position: 0350
Group: Segment Group 5 (Contact Information) Optional
Level: 3
Usage: Conditional
Max Use: 5
Purpose: A segment to identify a communications type and number for the contact specified in the CTA segment.

Notes: Example:
 COM+0031 123 456789:TE'
 COM+0031 456 987654:FX'

Data Element Summary

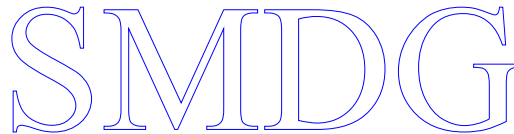
<u>Data Element</u>	<u>Component Element</u>	<u>Name</u>	<u>Base Attributes</u>	<u>User Attributes</u>
C076		COMMUNICATION CONTACT	M 3	M
		Communication number of a department or employee in a specified channel.		
	3148	Communication address identifier	M an..512	M
		To identify a communication address.		
	3155	Communication address code qualifier	M an..3	M
		Code qualifying the communication address.		
		EM Electronic mail		
		FX Telefax		
		TE Telephone		



Group: **TAX** Segment Group 6: Duty/Tax/Fee Details
Position: 0360
Group:
Level: 1
Usage: Conditional
Max Use: 5
Purpose: A group of segments specifying tax related information, and when necessary, the location(s) to which that tax information relates.

Segment Summary

	<u>Pos.</u>	<u>Seg.</u>		<u>Req.</u>	<u>Max.</u>	<u>Group:</u>
	<u>No.</u>	<u>ID</u>	<u>Name</u>	<u>Des.</u>	<u>Use</u>	<u>Repeat</u>
M	0370	TAX	Duty/Tax/Fee Details	M	1	
C	0380	MOA	Monetary Amount	C	1	



Segment: **TAX** Duty/Tax/Fee Details
Position: 0370 (Trigger Segment)
Group: Segment Group 6 (Duty/Tax/Fee Details) Optional
Level: 1
Usage: Must Use
Max Use: 1
Purpose: A segment specifying a tax type, category and rate or exemption, relating to the whole invoice e.g. Value Added Tax at the standard rate is applicable for all items.
Notes: Example:
 TAX+7+VAT+++<CODE VAT146 by 0%VAT>:::BTW_PERCENTAGE'

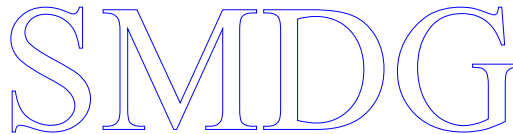
Data Element Summary

<u>Data Element</u>	<u>Component Element</u>	<u>Name</u>	<u>Base Attributes</u>	<u>User Attributes</u>
5283		DUTY OR TAX OR FEE FUNCTION CODE QUALIFIER Code qualifying the function of a duty or tax or fee. 7 Tax	M 1 an..3	M
C241		DUTY/TAX/FEE TYPE Code and/or name identifying duty, tax or fee.	C 1	R
	5153	Duty or tax or fee type name code Code specifying a type of duty, tax or fee. VAT Value added tax	C an..3	R
C533		DUTY/TAX/FEE ACCOUNT DETAIL	C 1	X
5286		DUTY OR TAX OR FEE ASSESSMENT BASIS VALUE	C 1 an..15	X
C243		DUTY/TAX/FEE DETAIL Rate of duty/tax/fee applicable to commodities or of tax applicable to services.	C 1	R
	5279	Duty or tax or fee rate code Code specifying a rate of a duty or tax or fee. VAT146 VAT- exempt according to article 146 of the EU VAT Directive	C an..7	
	1131	Code list identification code	C an..17	X
	3055	Code list responsible agency code	C an..3	X
	5278	Duty or tax or fee rate Rate of a duty or tax or fee.	C an..17	R

Segment: **MOA** Monetary Amount
Position: 0380
Group: Segment Group 6 (Duty/Tax/Fee Details) Optional
Level: 2
Usage: Conditional
Max Use: 1
Purpose: A segment specifying the amount for the identified tax/fee.
Notes: Example:
 MOA+25:255.00:EUR'

Data Element Summary

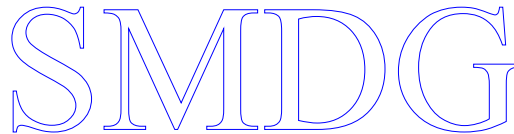
<u>Data Element</u>	<u>Component Element</u>	<u>Name</u>	<u>Base Attributes</u>	<u>User Attributes</u>
C516		MONETARY AMOUNT	M 1	M
		Amount of goods or services stated as a monetary amount in a specified currency.		
	5025	Monetary amount type code qualifier	M an..3	M
		Code qualifying the type of monetary amount.		
		25 Charge/allowance basis		
	5004	Monetary amount	C n..35	R
		To specify a monetary amount.		
	6345	Currency identification code	C an..3	R
		Code specifying a monetary unit.		
		Currency code (ISO4217)		



Group: **CUX** Segment Group 7: Currencies
Position: 0400
Group:
Level: 1
Usage: Conditional
Max Use: 99
Purpose: A group of segments specifying the currencies and related dates/periods valid for the whole invoice. Currency data maybe omitted in national applications but will be required for international transactions.

Segment Summary

	<u>Pos.</u>	<u>Seg.</u>		<u>Req.</u>	<u>Max.</u>	<u>Group:</u>
	<u>No.</u>	<u>ID</u>	<u>Name</u>	<u>Des.</u>	<u>Use</u>	<u>Repeat</u>
M	0410	CUX	Currencies	M	1	



Segment: **CUX** Currencies
Position: 0410 (Trigger Segment)
Group: Segment Group 7 (Currencies) Optional
Level: 1
Usage: Must Use
Max Use: 1
Purpose: A segment identifying the currencies required in the invoice e.g. the invoice currency. A rate of exchange may be given to convert a reference currency into a target currency.
Notes: Example:
 CUX+1:EUR:4'

Data Element Summary

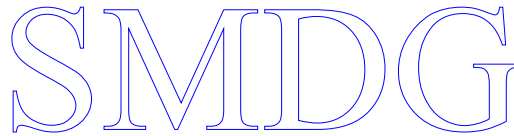
<u>Data Element</u>	<u>Component Element</u>	<u>Name</u>	<u>Base Attributes</u>		<u>User Attributes</u>
C504		CURRENCY DETAILS	C	1	R
		The usage to which a currency relates.			
	6347	Currency usage code qualifier	M	an..3	M
		Code qualifying the usage of a currency.			
		1 Charge payment currency			
		2 Reference currency			
	6345	Currency identification code	C	an..3	R
		Code specifying a monetary unit.			
	6343	Currency type code qualifier	C	an..3	
		Code qualifying the type of currency.			
		4 Invoicing currency			



Group: **PAT** Segment Group 8: Payment Terms Basis
Position: 0430
Group:
Level: 1
Usage: Optional
Max Use: 10
Purpose: A group of segments specifying the terms of payment applicable for the whole invoice.

Segment Summary

	<u>Pos. No.</u>	<u>Seg. ID</u>	<u>Name</u>	<u>Req. Des.</u>	<u>Max. Use</u>	<u>Group: Repeat</u>
M	0440	PAT	Payment Terms Basis	M	1	
C	0450	DTM	Date/Time/Period	O	5	
C	0460	PCD	Percentage Details	O	1	
C	0470	MOA	Monetary Amount	O	1	

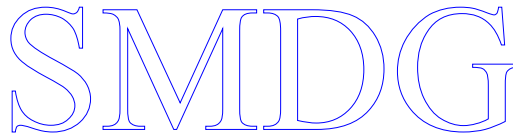


Segment: **PAT** Payment Terms Basis
Position: 0440 (Trigger Segment)
Group: Segment Group 8 (Payment Terms Basis) Optional
Level: 1
Usage: Must Use
Max Use: 1
Purpose: A segment identifying the payment terms and date/time basis.
Notes: This PAT is used to mention the funtion next part, fixed payment due date

 Example:
 PAT+3++82'

Data Element Summary

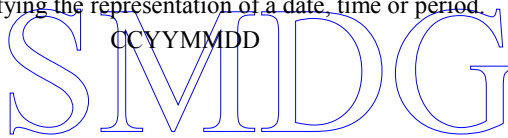
<u>Data Element</u>	<u>Component Element</u>	<u>Name</u>	<u>Base Attributes</u>	<u>User Attributes</u>
4279		PAYMENT TERMS TYPE CODE QUALIFIER Code qualifying the type of payment terms. 3 Fixed date	M 1 an..3	M
C110		PAYMENT TERMS	C 1	X
C112		TERMS/TIME INFORMATION Time details in payment terms.	C 1	
	2475	Time reference code Code referencing a point in time. 82 Payment due date	M an..3	M



Segment: **DTM** Date/Time/Period
Position: 0450
Group: Segment Group 8 (Payment Terms Basis) Optional
Level: 2
Usage: Optional
Max Use: 5
Purpose: A segment giving the specific date/time/period, if needed, of any payments, discounts, instalments etc.
Notes: This DTM is used for dates to mention the specific due date
 Example:
 DTM+13:20070630:102'

Data Element Summary

<u>Data Element</u>	<u>Component Element</u>	<u>Name</u>	<u>Base Attributes</u>	<u>User Attributes</u>
C507		DATE/TIME/PERIOD Date and/or time, or period relevant to the specified date/time/period type.	M 1	M
	2005	Date or time or period function code qualifier Code qualifying the function of a date, time or period. 13 Terms net due date	M an..3	M
	2380	Date or time or period value The value of a date, a date and time, a time or of a period in a specified representation.	C an..35	
	2379	Date or time or period format code Code specifying the representation of a date, time or period. 102 CCYYMMDD	C an..3	



Segment: **PCD** Percentage Details
Position: 0460
Group: Segment Group 8 (Payment Terms Basis) Optional
Level: 2
Usage: Optional
Max Use: 1
Purpose: A segment specifying the discount, interest, penalty as well as instalment percentage.
Notes: This segment is used to specify the percentage penalty due date

 Exmaple:
 PCD+15:10:13:172'

Data Element Summary

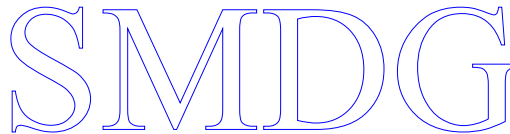
<u>Data Element</u>	<u>Component Element</u>	<u>Name</u>	<u>Base Attributes</u>	<u>User Attributes</u>
C501		PERCENTAGE DETAILS Percentage relating to a specified basis.	M 1	M
	5245	Percentage type code qualifier Code qualifying the type of percentage. 15 Penalty percentage	M an..3	M
	5482	Percentage To specify a percentage.	C n..10	
	5249	Percentage basis identification code Code specifying the basis on which a percentage is calculated. 13 Invoice value	C an..3	
	1131	Code list identification code Code identifying a code list. 172 Carriers	C an..17	

Segment: **MOA** Monetary Amount
Position: 0470
Group: Segment Group 8 (Payment Terms Basis) Optional
Level: 2
Usage: Optional
Max Use: 1
Purpose: A segment specifying amounts related to payment discount penalties or instalments.
Notes: This MOA is used for mentioning the amount after due date

Example:
 MOA+9:1353:EUR'

Data Element Summary

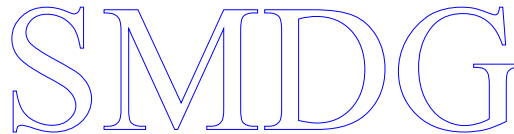
<u>Data Element</u>	<u>Component Element</u>	<u>Name</u>	<u>Base Attributes</u>	<u>User Attributes</u>
C516		MONETARY AMOUNT Amount of goods or services stated as a monetary amount in a specified currency.	M 1	M
	5025	Monetary amount type code qualifier Code qualifying the type of monetary amount. 9 Amount due/amount payable	M an..3	M
	5004	Monetary amount To specify a monetary amount.	C n..35	
	6345	Currency identification code Code specifying a monetary unit.	C an..3	



Group: **TDT** Segment Group 9: Details of Transport
Position: 0500
Group:
Level: 1
Usage: Conditional
Max Use: 10
Purpose: A group of segments identifying the mode and means of transport, contract of carriage, location and relevant dates and times for transportation, relating to the whole invoice.

Segment Summary

	<u>Pos.</u>	<u>Seg.</u>	<u>Name</u>	<u>Req.</u>	<u>Max.</u>	<u>Group:</u>
	<u>No.</u>	<u>ID</u>		<u>Des.</u>	<u>Use</u>	<u>Repeat</u>
M	0510	TDT	Details of Transport	M	1	
	0530		Segment Group 10: Place/Location Identification	C		10
	0560		Segment Group 11: Reference	C		9999



Segment: **TDT** Details of Transport
Position: 0510 (Trigger Segment)
Group: Segment Group 9 (Details of Transport) Optional
Level: 1
Usage: Must Use
Max Use: 1
Purpose: A segment specifying the mode, means and identification of the transport for the goods being invoiced.
Notes: The TDT segment can be used to specify transport services provided for the delivery of the invoiced line items.

Example:
TDT+20+573W+1+++ABCU:172:166:ABC LINE+++7248306::11:PACIFIC
TRADER:DK'

Data Element Summary

<u>Data Element</u>	<u>Component Element</u>	<u>Name</u>	<u>Base Attributes</u>	<u>User Attributes</u>
8051		TRANSPORT STAGE CODE QUALIFIER Code qualifying a specific stage of transport. 10 Pre-carriage transport 20 Main-carriage transport	M 1 an..3	M
8028		MEANS OF TRANSPORT JOURNEY IDENTIFIER To identify a journey of a means of transport. Number assigned by the transport operator (export) voyage number.	C 1 an..17	
C220		MODE OF TRANSPORT Method of transport code or name. Code preferred.	C 1	R
	8067	Transport mode name code Code specifying the name of a mode of transport. 1 Maritime Transport (Ocean)	C an..3	R
C228		TRANSPORT MEANS	C 1	X
C040		CARRIER Identification of a carrier by code and/or by name. Code preferred.	C 1	R
	3127	Carrier identifier To identify a carrier.	C an..17	R
	1131	Code list identification code Code identifying a code list. 172 Carriers	C an..17	
	3055	Code list responsible agency code Code specifying the agency responsible for a code list. 20 BIC (Bureau International des Containeurs) 166 US, National Motor Freight Classification Association 184 AU, ACOS (Australian Chamber of Shipping) 213 JP, NACCS Center (Nippon Automated Cargo Clearance System Operations Organization) ZZZ Mutually defined	C an..3	R
8101		TRANSIT DIRECTION INDICATOR CODE	C 1 an..3	X
C401		EXCESS TRANSPORTATION INFORMATION	C 1	X

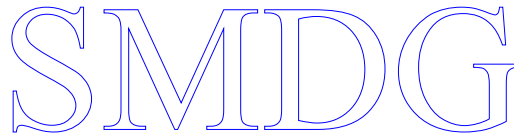
C222	TRANSPORT IDENTIFICATION	C	1	
	Code and/or name identifying the means of transport.			
8213	Transport means identification name identifier	C	an..9	
	Identifies the name of the transport means.			
	Call Sign (if 8067 = 1 and 1131 = 103)			
	Lloyd's Number (if 8067 = 1 and 3055 = 11)			
1131	Code list identification code	C	an..17	
	Code identifying a code list.			
	103 Call sign directory			
3055	Code list responsible agency code	C	an..3	X
8212	Transport means identification name	C	an..35	
	Name identifying a means of transport.			

S M I D G

Group: **LOC** Segment Group 10: Place/Location Identification
Position: 0530
Group: Segment Group 9 (Details of Transport) Optional
Level: 2
Usage: Conditional
Max Use: 10
Purpose: A group of segments giving the location and date/time information relative to the transportation.

Segment Summary

	<u>Pos.</u>	<u>Seg.</u>		<u>Req.</u>	<u>Max.</u>	<u>Group:</u>
	<u>No.</u>	<u>ID</u>	<u>Name</u>	<u>Des.</u>	<u>Use</u>	<u>Repeat</u>
M	0540	LOC	Place/Location Identification	M		1
C	0550	DTM	Date/Time/Period	C		5



Segment: **LOC** Place/Location Identification
Position: 0540 (Trigger Segment)
Group: Segment Group 10 (Place/Location Identification) Optional
Level: 2
Usage: Must Use
Max Use: 1
Purpose: A segment identifying locations relevant to the transport specified in the TDT segment e.g. place of departure or border crossing point.
Notes: This segment is used to identify the location where the terms of delivery apply.

Example:
 LOC+7+<USSFO:139:6+SFOTRM1:72:ZZZ'

Data Element Summary

<u>Data Element</u>	<u>Component Element</u>	<u>Name</u>	<u>Base Attributes</u>	<u>User Attributes</u>
3227		LOCATION FUNCTION CODE QUALIFIER Code identifying the function of a location. 7 Place of delivery 9 Place/port of loading 12 Port of discharge	M 1 an..3	M
C517		LOCATION IDENTIFICATION Identification of a location by code or name.	C 1	R
	3225	Location name code Code specifying the name of the location. Location Code - The specification of locations by UNLOCODEs is recommended whenever appropriate.	C an..25	D
	1131	Code list identification code Code identifying a code list. 139 Port	C an..17	
	3055	Code list responsible agency code Code specifying the agency responsible for a code list. 6 UN/ECE (United Nations - Economic Commission for Europe)	C an..3	
	3224	Location name Name of the location. Free text specifying a location.	C an..256	D
C519		RELATED LOCATION ONE IDENTIFICATION Identification the first related location by code or name.	C 1	
	3223	First related location name code Code specifying first related location.	C an..25	R
	1131	Code list identification code Code identifying a code list. 72 Container terminal 264 Storage facility 265 Repair facility	C an..17	
	3055	Code list responsible agency code Code specifying the agency responsible for a code list. ZZZ Mutually defined	C an..3	

Segment: **DTM** Date/Time/Period
Position: 0550
Group: Segment Group 10 (Place/Location Identification) Optional
Level: 3
Usage: Conditional
Max Use: 5
Purpose: A segment identifying the date/time details of departure and/or arrival of the transported goods for the specified location.

Notes:

Example:
 DTM+178:20010320:102'

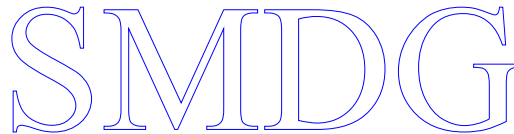
Data Element Summary

<u>Data Element</u>	<u>Component Element</u>	<u>Name</u>	<u>Base Attributes</u>	<u>User Attributes</u>
C507		DATE/TIME/PERIOD Date and/or time, or period relevant to the specified date/time/period type.	M 1	M
	2005	Date or time or period function code qualifier Code qualifying the function of a date, time or period. 132 Arrival date/time, estimated 133 Departure date/time, estimated 178 Arrival date/time, actual 186 Departure date/time, actual	M an..3	M
	2380	Date or time or period value The value of a date, a date and time, a time or of a period in a specified representation.	C an..35	R
	2379	Date or time or period format code Code specifying the representation of a date, time or period. 102 CCYYMMDD	C an..3	R

Group: **RF** Segment Group 11: Reference
Position: 0560
Group: Segment Group 9 (Details of Transport) Optional
Level: 2
Usage: Conditional
Max Use: 9999
Purpose: A group of segments to allow reference to transport details.

Segment Summary

	<u>Pos.</u>	<u>Seg.</u>		<u>Req.</u>	<u>Max.</u>	<u>Group:</u>
	<u>No.</u>	<u>ID</u>	<u>Name</u>	<u>Des.</u>	<u>Use</u>	<u>Repeat</u>
M	0570	RF	Reference	M	1	



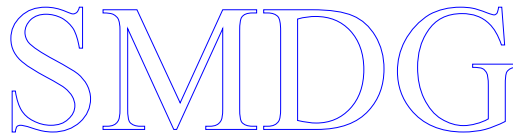
Segment: **RFF** Reference
Position: 0570 (Trigger Segment)
Group: Segment Group 11 (Reference) Optional
Level: 2
Usage: Must Use
Max Use: 1
Purpose: A segment giving reference to transport details.
Notes: The RFF segment can be used to specify the import voyage nr

Example:
 RFF+VON:573E'

Data Element Summary

<u>Data Element</u>	<u>Component Element</u>	<u>Name</u>	<u>Base Attributes</u>	<u>User Attributes</u>
C506		REFERENCE Identification of a reference.	M 1	M
	1153	Reference code qualifier Code qualifying a reference. VON Voyage number	M an..3	M
	1154	Reference identifier Identifies a reference.	C an..70	

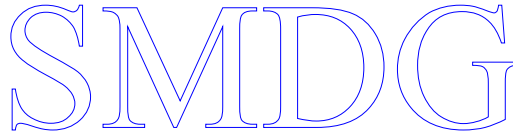
Example:
 RFF+VON+00573W'



Group: **LIN** Segment Group 26: Line Item
Position: 1090
Group:
Level: 1
Usage: Conditional
Max Use: 9999999
Purpose: A group of segments providing details of the individual invoiced items. There must be at least one occurrence of Segment group 26 within an invoice, but not necessarily in a credit note or a debit note. This Segment group may be repeated to give sub-line details.

Segment Summary

	<u>Pos.</u>	<u>Seg.</u>	<u>Name</u>	<u>Req.</u>	<u>Max.</u>	<u>Group:</u>
	<u>No.</u>	<u>ID</u>		<u>Des.</u>	<u>Use</u>	<u>Repeat</u>
M	1100	LIN	Line Item	M	1	
C	1130	IMD	Item Description	C	99	
C	1150	QTY	Quantity	C	5	
C	1180	DTM	Date/Time/Period	C	35	
C	1220	EQD	Equipment Details	C	1	
	1250		Segment Group 27: Monetary Amount	C		99
	1330		Segment Group 29: Price Details	C		25
	1390		Segment Group 30: Reference	C		10
	1720		Segment Group 39: Allowance or Charge	C		30

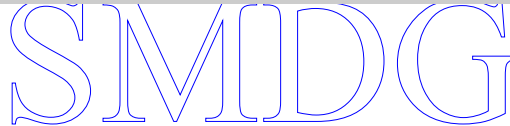


Segment: **LIN** Line Item
Position: 1100 (Trigger Segment)
Group: Segment Group 26 (Line Item) Optional
Level: 1
Usage: Must Use
Max Use: 1
Purpose: A segment identifying the line item by the line number and configuration level, and additionally, identifying the product or service invoiced. Other product identification numbers, e.g. Buyer product number etc., can be specified within the following PIA segment.
Notes: Example:
 LIN+1++203008'

Data Element Summary

<u>Data Element</u>	<u>Component Element</u>	<u>Name</u>	<u>Base Attributes</u>	<u>User Attributes</u>
1082		LINE ITEM IDENTIFIER To identify a line item.	C 1 an..6	R
1229		ACTION REQUEST/NOTIFICATION DESCRIPTION CODE	C 1 an..3	X
C212		ITEM NUMBER IDENTIFICATION Goods identification for a specified source.	C 1	R
	7140	Item identifier To identify an item.	C an..35	R

UN/Recommendation #23 (UN FREIGHT COST CODES)



Segment: **IMD** Item Description
Position: 1130
Group: Segment Group 26 (Line Item) Optional
Level: 2
Usage: Conditional
Max Use: 99
Purpose: A segment for describing the product or service being invoiced as well as product characteristic. This segment should be used for products or services that cannot be fully identified by a product code or article number.
Notes: Example:
 IMD+A++4:::LOADING 40 FEET CONTAINER EMPTY DS/SS'

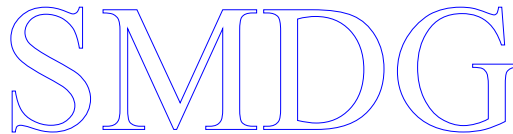
Data Element Summary

<u>Data Element</u>	<u>Component Element</u>	<u>Name</u>	<u>Base Attributes</u>	<u>User Attributes</u>
7077		DESCRIPTION FORMAT CODE Code specifying the format of a description.	C 1 an..3	
	A	Free-form long description		
C272		ITEM CHARACTERISTIC	C 1	X
C273		ITEM DESCRIPTION Description of an item.	C 1	R
	7009	Item description code Code specifying an item.	C an..17	
	4	Normal text		
1131		Code list identification code	C an..17	X
3055		Code list responsible agency code	C an..3	X
7008		Item description Free form description of an item.	C an..256	R

Segment: **QTY** Quantity
Position: 1150
Group: Segment Group 26 (Line Item) Optional
Level: 2
Usage: Conditional
Max Use: 5
Purpose: A segment identifying the product quantities e.g. invoiced quantity.
Notes: Example:
 QTY+104:1'

Data Element Summary

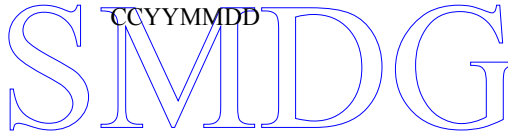
<u>Data Element</u>	<u>Component Element</u>	<u>Name</u>	<u>Base Attributes</u>	<u>User Attributes</u>
C186		QUANTITY DETAILS Quantity information in a transaction, qualified when relevant.	M 1	M
	6063	Quantity type code qualifier Code qualifying the type of quantity.	M an..3	M
		47 Invoiced quantity		
		100 Chargeable weight		
		104 Chargeable number of containers		
		108 Chargeable period		
	6060	Quantity Alphanumeric representation of a quantity.	M an..35	M



Segment: **DTM** Date/Time/Period
Position: 1180
Group: Segment Group 26 (Line Item) Optional
Level: 2
Usage: Conditional
Max Use: 35
Purpose: A segment specifying date/time/period details relating to the line item only.
Notes: Example:
 DTM+178:20020320:102'

Data Element Summary

<u>Data Element</u>	<u>Component Element</u>	<u>Name</u>	<u>Base Attributes</u>	<u>User Attributes</u>
C507		DATE/TIME/PERIOD	M 1	M
		Date and/or time, or period relevant to the specified date/time/period type.		
	2005	Date or time or period function code qualifier	M an..3	M
		Code qualifying the function of a date, time or period.		
		178 Arrival date/time, actual		
		186 Departure date/time, actual		
		193 Execution date		
	2380	Date or time or period value	C an..35	R
		The value of a date, a date and time, a time or of a period in a specified representation.		
	2379	Date or time or period format code	C an..3	R
		Code specifying the representation of a date, time or period.		
		102 CCYYMMDD		



Segment: **EQD** Equipment Details
Position: 1220
Group: Segment Group 26 (Line Item) Optional
Level: 2
Usage: Conditional
Max Use: 1
Purpose: A segment to specify the type and size of equipment being billed.
Notes: Example:
 Example: EQD+CN+ABCU5466891+4332:102:5++3+5'

Data Element Summary

<u>Data Element</u>	<u>Component Element</u>	<u>Name</u>	<u>Base Attributes</u>	<u>User Attributes</u>
8053		EQUIPMENT TYPE CODE QUALIFIER Code qualifying a type of equipment. CN Container	M 1 an..3	M
C237		EQUIPMENT IDENTIFICATION Marks (letters/numbers) identifying equipment. Must be used if an equipment number is known.	C 1	D
	8260	Equipment identifier To identify equipment. Equipment number including the prefix. Equipment numbers are to be transmitted as a contiguous field.	C an..17	D
C224		EQUIPMENT SIZE AND TYPE Code and or name identifying size and type of equipment. Code preferred. It is recommended that this information should be provided whenever known.	C 1	D
	8155	Equipment size and type description code Code specifying the size and type of equipment. ISO 6346 is strongly recommended.	C an..10	
	1131	Code list identification code Code identifying a code list. 102 Size and type	C an..17	
	3055	Code list responsible agency code Code specifying the agency responsible for a code list. It is understood that the latest version of the ISO code due for release in late 1995 will enable the size/type coding of non-ISO standard containers. 5 ISO (International Organization for Standardization)	C an..3	
8077		EQUIPMENT SUPPLIER CODE	C 1 an..3	X
8249		EQUIPMENT STATUS CODE Code specifying the status of equipment. 1 Continental 2 Export 3 Import 6 Transhipment	C 1 an..3	
8169		FULL OR EMPTY INDICATOR CODE Code indicating whether an object is full or empty.	C 1 an..3	

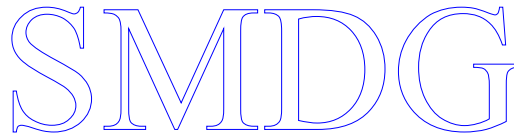
4 Empty
5 Full

SMDG

Group: **MOA** Segment Group 27: Monetary Amount
Position: 1250
Group: Segment Group 26 (Line Item) Optional
Level: 2
Usage: Conditional
Max Use: 99
Purpose: A group of segments specifying any monetary amounts relating to the products and when necessary a currency.

Segment Summary

	<u>Pos.</u> <u>No.</u>	<u>Seg.</u> <u>ID</u>	<u>Name</u>	<u>Req.</u> <u>Des.</u>	<u>Max.</u> <u>Use</u>	<u>Group:</u> <u>Repeat</u>
M	1260	MOA	Monetary Amount	M	1	



Segment: **MOA** Monetary Amount
Position: 1260 (Trigger Segment)
Group: Segment Group 27 (Monetary Amount) Optional
Level: 2
Usage: Must Use
Max Use: 1
Purpose: A segment specifying any monetary amounts relating to the product, e.g. item amount, insurance value, customs value.
Notes: Example:
 MOA+203:150.00:USD'

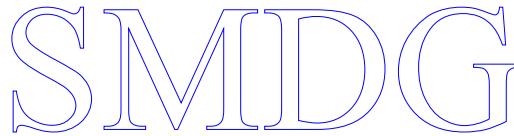
Data Element Summary

<u>Data Element</u>	<u>Component Element</u>	<u>Name</u>	<u>Base Attributes</u>	<u>User Attributes</u>
C516		MONETARY AMOUNT	M 1	M
		Amount of goods or services stated as a monetary amount in a specified currency.		
	5025	Monetary amount type code qualifier	M an..3	M
		Code qualifying the type of monetary amount.		
		203 Line item amount		
	5004	Monetary amount	C n..35	R
		To specify a monetary amount.		
		An amount should always be specified except for 'no value' qualifiers.		
	6345	Currency identification code	C an..3	R
		Code specifying a monetary unit.		
		Currency Code as per ISO 4217		

Group: **PRI** Segment Group 29: Price Details
Position: 1330
Group: Segment Group 26 (Line Item) Optional
Level: 2
Usage: Conditional
Max Use: 25
Purpose: A group of segments identifying the relevant pricing information for the goods or services invoiced.

Segment Summary

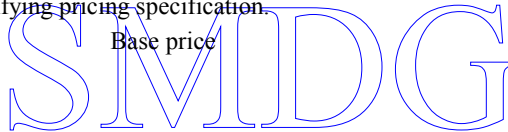
	<u>Pos.</u>	<u>Seg.</u>		<u>Req.</u>	<u>Max.</u>	<u>Group:</u>
	<u>No.</u>	<u>ID</u>	<u>Name</u>	<u>Des.</u>	<u>Use</u>	<u>Repeat</u>
M	1340	PRI	Price Details	M		1



Segment: **PRI** Price Details
Position: 1340 (Trigger Segment)
Group: Segment Group 29 (Price Details) Optional
Level: 2
Usage: Must Use
Max Use: 1
Purpose: A segment to specify the price type and amount. The price used in the calculation of the line amount will be identified as 'Price'. Indication of "net price" or "gross price" can be given in 5387 "Price specification code".
Notes: Example:
 PRI+INV:250.00::ABL'

Data Element Summary

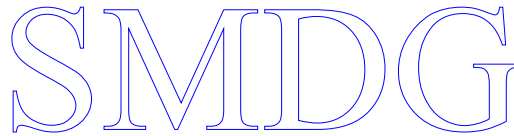
<u>Data Element</u>	<u>Component Element</u>	<u>Name</u>	<u>Base Attributes</u>	<u>User Attributes</u>
C509		PRICE INFORMATION Identification of price type, price and related details.	C 1	R
	5125	Price code qualifier Code qualifying a price. INV Invoice price	M an..3	M
	5118	Price amount To specify a price.	C n..15	R
	5375	Price type code	C an..3	X
	5387	Price specification code Code identifying pricing specification. ABL Base price	C an..3	



Group: **RFF** Segment Group 30: Reference
Position: 1390
Group: Segment Group 26 (Line Item) Optional
Level: 2
Usage: Conditional
Max Use: 10
Purpose: A group giving references and where necessary, their dates, relating to the line item.

Segment Summary

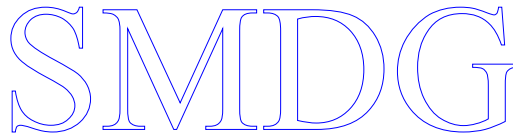
	<u>Pos.</u> <u>No.</u>	<u>Seg.</u> <u>ID</u>	<u>Name</u>	<u>Req.</u> <u>Des.</u>	<u>Max.</u> <u>Use</u>	<u>Group:</u> <u>Repeat</u>
M	1400	RFF	Reference	M	1	



Segment: **RFF** Reference
Position: 1400 (Trigger Segment)
Group: Segment Group 30 (Reference) Optional
Level: 2
Usage: Must Use
Max Use: 1
Purpose: A segment identifying the reference by its number and where appropriate a line number within a document.
Notes: Example:
 RFF+BN:AG12345'

Data Element Summary

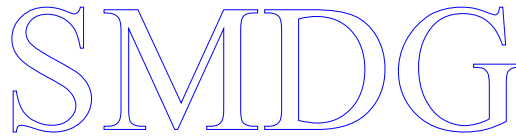
<u>Data Element</u>	<u>Component Element</u>	<u>Name</u>	<u>Base Attributes</u>	<u>User Attributes</u>
C506		REFERENCE Identification of a reference.	M 1	M
	1153	Reference code qualifier Code qualifying a reference. BN Booking reference number CU Consignor's reference number	M an..3	M
	1154	Reference identifier Identifies a reference.	C an..70	R



Group: **ALC** Segment Group 39: Allowance or Charge
Position: 1720
Group: Segment Group 26 (Line Item) Optional
Level: 2
Usage: Conditional
Max Use: 30
Purpose: A group of segments specifying allowances and charges for the line item where this is different to or not specified within the heading section.

Segment Summary

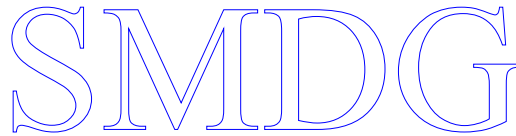
	<u>Pos. No.</u>	<u>Seg. ID</u>	<u>Name</u>	<u>Req. Des.</u>	<u>Max. Use</u>	<u>Group: Repeat</u>
M	1730	ALC	Allowance or Charge	M		1
	1770		Segment Group 40: Quantity	C		1
	1800		Segment Group 41: Percentage Details	C		1
	1830		Segment Group 42: Monetary Amount	C		2



Segment: **ALC** Allowance or Charge
Position: 1730 (Trigger Segment)
Group: Segment Group 39 (Allowance or Charge) Optional
Level: 2
Usage: Must Use
Max Use: 1
Purpose: A segment identifying the charge or allowance and, where necessary its calculation sequence.
Notes: Exmple:
 ALC+C'

Data Element Summary

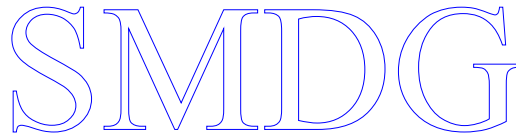
<u>Data Element</u>	<u>Component Element</u>	<u>Name</u>	<u>Base Attributes</u>	<u>User Attributes</u>
5463		ALLOWANCE OR CHARGE CODE QUALIFIER	M 1 an..3	M
		Code qualifying an allowance or charge.		
		Allowance at Credit		
		Charge at Debit		
		A Allowance		
		C Charge		



Group: **QTY** Segment Group 40: Quantity
Position: 1770
Group: Segment Group 39 (Allowance or Charge) Optional
Level: 3
Usage: Conditional
Max Use: 1
Purpose: A group of segments specifying the quantity of the allowance or charge with its measure unit specifier. A range to which the allowance or charge applies may be specified e.g. An allowance of a free quantity of 20 pieces may be specified if the goods quantity ordered is greater than 1000 pieces.

Segment Summary

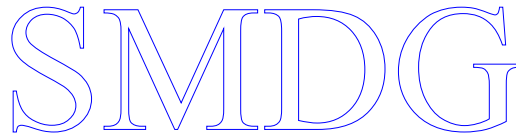
	<u>Pos.</u>	<u>Seg.</u>	<u>Name</u>	<u>Req.</u>	<u>Max.</u>	<u>Group:</u>
	<u>No.</u>	<u>ID</u>		<u>Des.</u>	<u>Use</u>	<u>Repeat</u>
M	1780	QTY	Quantity	M	1	



Segment: **QTY** Quantity
Position: 1780 (Trigger Segment)
Group: Segment Group 40 (Quantity) Optional
Level: 3
Usage: Must Use
Max Use: 1
Purpose: A segment identifying the type of quantity and the quantity related to the allowance or charge.
Notes: Example:
 QTY+104:1'

Data Element Summary

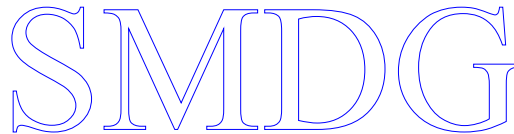
<u>Data Element</u>	<u>Component Element</u>	<u>Name</u>	<u>Base Attributes</u>	<u>User Attributes</u>
C186		QUANTITY DETAILS Quantity information in a transaction, qualified when relevant.	M 1	M
	6063	Quantity type code qualifier Code qualifying the type of quantity. 104 Chargeable number of containers	M an..3	M
	6060	Quantity Alphanumeric representation of a quantity.	M an..35	M



Group: **PCD** Segment Group 41: Percentage Details
Position: 1800
Group: Segment Group 39 (Allowance or Charge) Optional
Level: 3
Usage: Conditional
Max Use: 1
Purpose: A group of segments specifying the percentage for the allowance or charge, e.g. The allowance/charge amount is calculated as 5% of the goods value or a price reduction of 5% may be specified if the goods quantity ordered is within the range 5 tons to 10 tons.

Segment Summary

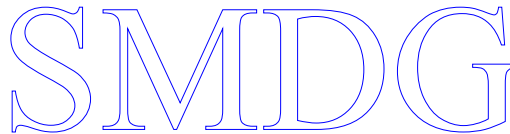
	<u>Pos.</u>	<u>Seg.</u>	<u>Name</u>	<u>Req.</u>	<u>Max.</u>	<u>Group:</u>
	<u>No.</u>	<u>ID</u>		<u>Des.</u>	<u>Use</u>	<u>Repeat</u>
M	1810	PCD	Percentage Details	M	1	



Segment: **PCD** Percentage Details
Position: 1810 (Trigger Segment)
Group: Segment Group 41 (Percentage Details) Optional
Level: 3
Usage: Must Use
Max Use: 1
Purpose: A segment identifying the percentage and the percentage basis for the calculation of the allowance or charge.
Notes: Example:
 PCD+8:0.50:3'

Data Element Summary

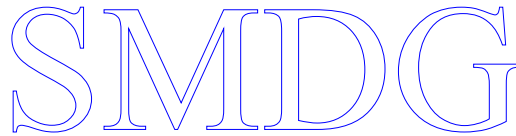
<u>Data Element</u>	<u>Component Element</u>	<u>Name</u>	<u>Base Attributes</u>	<u>User Attributes</u>
C501		PERCENTAGE DETAILS Percentage relating to a specified basis.	M 1	M
	5245	Percentage type code qualifier Code qualifying the type of percentage. 8 Reduction/surcharge percentage	M an..3	M
	5482	Percentage To specify a percentage.	C n..10	R
	5249	Percentage basis identification code Code specifying the basis on which a percentage is calculated. 3 Per equipment unit	C an..3	



Group: **MOA** Segment Group 42: Monetary Amount
Position: 1830
Group: Segment Group 39 (Allowance or Charge) Optional
Level: 3
Usage: Conditional
Max Use: 2
Purpose: A group of segments specifying a monetary amount for an allowance or charge. A range to which the allowance or charge applies can be specified, e.g. an allowance of 5000 BEF may be specified if goods value ordered is greater than 100000 BEF.

Segment Summary

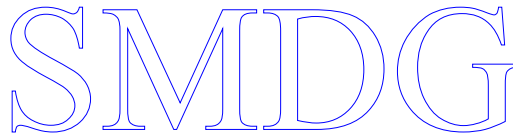
	<u>Pos.</u> <u>No.</u>	<u>Seg.</u> <u>ID</u>	<u>Name</u>	<u>Req.</u> <u>Des.</u>	<u>Max.</u> <u>Use</u>	<u>Group:</u> <u>Repeat</u>
M	1840	MOA	Monetary Amount	M	1	



Segment: **MOA** Monetary Amount
Position: 1840 (Trigger Segment)
Group: Segment Group 42 (Monetary Amount) Optional
Level: 3
Usage: Must Use
Max Use: 1
Purpose: A segment identifying the monetary amount for the allowance or charge.
Notes: Example:
 MOA+23:2000.50:EUR'

Data Element Summary

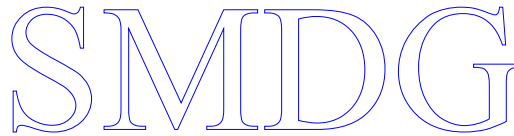
<u>Data Element</u>	<u>Component Element</u>	<u>Name</u>	<u>Base Attributes</u>	<u>User Attributes</u>
C516		MONETARY AMOUNT Amount of goods or services stated as a monetary amount in a specified currency.	M 1	M
	5025	Monetary amount type code qualifier Code qualifying the type of monetary amount. 23 Charge amount	M an..3	M
	5004	Monetary amount To specify a monetary amount.	C n..35	R
	6345	Currency identification code Code specifying a monetary unit. Currency Code (ISO4217)	C an..3	R



Segment: **UNS** Section Control
Position: 2170
Group:
Level: 0
Usage: Must Use
Max Use: 1
Purpose: A mandatory service segment placed before the first user segment in the summary section to avoid segment collision.
Notes: Example:
 UNS+S'

Data Element Summary

<u>Data Element</u>	<u>Component Element</u>	<u>Name</u>	<u>Base Attributes</u>	<u>User Attributes</u>
0081		SECTION IDENTIFIER	M 1 a1	M
		A character identifying the next section in a message.		
		S		Detail/summary section separation

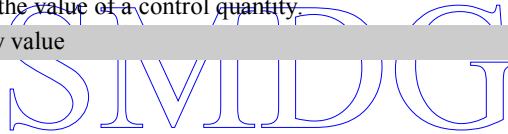


Segment: **CNT** Control Total
Position: 2180
Group:
Level: 1
Usage: Conditional
Max Use: 10
Purpose: A segment by which control totals may be provided by the sender for checking by the receiver.

Notes: Example:
 CNT+12:1'

Data Element Summary

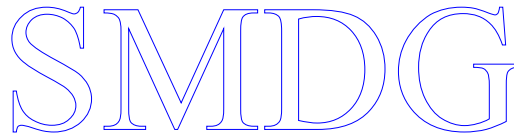
<u>Data Element</u>	<u>Component Element</u>	<u>Name</u>	<u>Base Attributes</u>	<u>User Attributes</u>
C270		CONTROL	M 1	M
		Control total for checking integrity of a message or part of a message.		
	6069	Control total type code qualifier	M an..3	M
		Code qualifying the type of control of hash total.		
		2 Number of line items in message		
		4 Number of invoice lines		
		12 Invoice total amount		
		16 Total number of equipment		
	6066	Control total value	M n..18	M
		To specify the value of a control quantity.		
		1 = Dummy value		



Group: **MOA** Segment Group 50: Monetary Amount
Position: 2190
Group:
Level: 1
Usage: Must Use
Max Use: 100
Purpose: A group of segments giving total amounts for the whole invoice and - if relevant - detailing amounts pre-paid with relevant references and dates.

Segment Summary

	<u>Pos.</u>	<u>Seg.</u>	<u>Name</u>	<u>Req.</u>	<u>Max.</u>	<u>Group:</u>
	<u>No.</u>	<u>ID</u>		<u>Des.</u>	<u>Use</u>	<u>Repeat</u>
M	2200	MOA	Monetary Amount	M	1	
	2210		Segment Group 51: Reference	C		1



Segment: **MOA** Monetary Amount
Position: 2200 (Trigger Segment)
Group: Segment Group 50 (Monetary Amount) Optional
Level: 1
Usage: Must Use
Max Use: 1
Purpose: A segment giving the total amounts for the whole invoice message such as message monetary amount, message line item total amount, amount subject to payment discount, amount subject to tax, alternative currency total amount, total additional amount, sub-total amounts prepaid, total amount prepaid.

Notes: Example:
 MOA+39:2300.50:EUR'

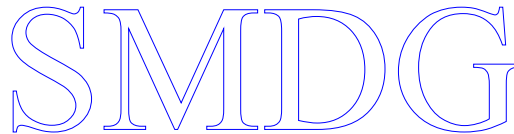
Data Element Summary

<u>Data Element</u>	<u>Component Element</u>	<u>Name</u>	<u>Base Attributes</u>	<u>User Attributes</u>
C516		MONETARY AMOUNT Amount of goods or services stated as a monetary amount in a specified currency.	M 1	M
	5025	Monetary amount type code qualifier Code qualifying the type of monetary amount. 39 Invoice total amount	M an..3	M
	5004	Monetary amount To specify a monetary amount.	C n..35	R
	6345	Currency identification code Code specifying a monetary unit. Currency Code (ISO4217)	C an..3	R

Group: **RFF** Segment Group 51: Reference
Position: 2210
Group: Segment Group 50 (Monetary Amount) Optional
Level: 2
Usage: Conditional
Max Use: 1
Purpose: A group of segments for giving references and where necessary, their dates, relating e.g. amounts prepaid number.

Segment Summary

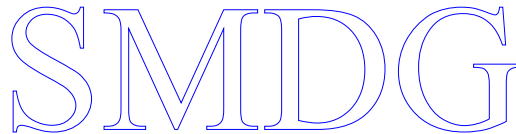
	<u>Pos.</u>	<u>Seg.</u>		<u>Req.</u>	<u>Max.</u>	<u>Group:</u>
	<u>No.</u>	<u>ID</u>	<u>Name</u>	<u>Des.</u>	<u>Use</u>	<u>Repeat</u>
M	2220	RFF	Reference	M		1
C	2230	DTM	Date/Time/Period	C		5



Segment: **RFF** Reference
Position: 2220 (Trigger Segment)
Group: Segment Group 51 (Reference) Optional
Level: 2
Usage: Must Use
Max Use: 1
Purpose: A segment identifying the reference by its number and where appropriate a line number within a document.
Notes: Example:
 RFF+PQ:INV123456'

Data Element Summary

<u>Data Element</u>	<u>Component Element</u>	<u>Name</u>	<u>Base Attributes</u>	<u>User Attributes</u>
C506		REFERENCE Identification of a reference.	M 1	M
	1153	Reference code qualifier Code qualifying a reference. PQ Payment reference	M an..3	M
	1154	Reference identifier Identifies a reference.	C an..70	R

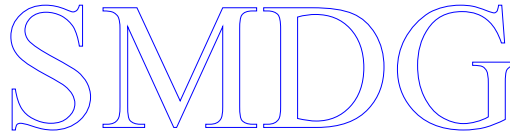


Segment: **DTM** Date/Time/Period
Position: 2230
Group: Segment Group 51 (Reference) Optional
Level: 3
Usage: Conditional
Max Use: 5
Purpose: A segment specifying the date/time related to the reference.

Notes: Example:
 DTM+171:2002124500:203'

Data Element Summary

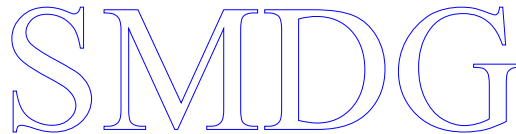
<u>Data Element</u>	<u>Component Element</u>	<u>Name</u>	<u>Base Attributes</u>	<u>User Attributes</u>
C507		DATE/TIME/PERIOD Date and/or time, or period relevant to the specified date/time/period type.	M 1	M
	2005	Date or time or period function code qualifier Code qualifying the function of a date, time or period. 171 Reference date/time	M an..3	M
	2380	Date or time or period value The value of a date, a date and time, a time or of a period in a specified representation.	C an..35	R
	2379	Date or time or period format code Code specifying the representation of a date, time or period. 203 CCYYMMDDHHMM	C an..3	R



Segment: **UNT** Message Trailer
Position: 2320
Group:
Level: 0
Usage: Must Use
Max Use: 1
Purpose: A service segment ending a message, giving the total number of segments in the message (including the UNH & UNT) and the control reference number of the message.
Notes: Example:
 UNH+152:123456789'

Data Element Summary

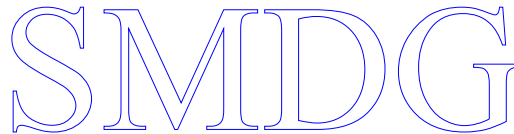
<u>Data Element</u>	<u>Component Element</u>	<u>Name</u>	<u>Base Attributes</u>	<u>User Attributes</u>
0074		NUMBER OF SEGMENTS IN A MESSAGE Control count of number of segments in a message.	M 1 n..6	M
0062		MESSAGE REFERENCE NUMBER Unique message reference assigned by the sender. Should match DE 0062 in the UNH	M 1 an..14	M



Segment: UNZ Interchange Trailer
Position: 2330
Group:
Level: 0
Usage: Conditional
Max Use: 1
Purpose: To end and check the completeness of an interchange
Notes: Example:
 UNZ+1+12345678'

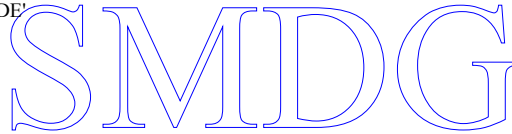
Data Element Summary

<u>Data Element</u>	<u>Component Element</u>	<u>Name</u>	<u>Base Attributes</u>	<u>User Attributes</u>
0036		INTERCHANGE CONTROL COUNT	M 1 n..6	M
Count either of the number of messages or, if used, of the number of functional groups in an interchange.				
0020		INTERCHANGE CONTROL REFERENCE	M 1 an..14	M
Unique reference assigned by the sender to an interchange.				
Should match DE 0020 in the UNB				



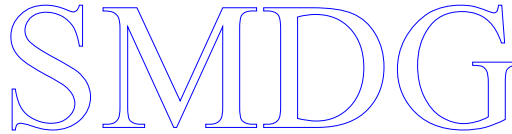
Example messages**Invoice**

UNB+UNOA:2+\$\$SENDER+\$RECEIVER+\$DATE:\$TIME+INTERCHANGE CONTROL REFERENCE'
UNH+MESSAGE REFERENCE NUMBER+INVOIC:D:00B:UN:SMDG10'
BGM+383+INVOICE_NN+9'
DTM+137:MESSAGE_DATETIME:203'
RFF+IV:INVOICE_NN'
DTM+3:INVOICE_DATE:102'
DTM+265:INVOICE_DUE_DATE:102'
NAD+IV+INV_PARTY:160:20'
MOA+39:TOTAL_CHARGE_AMOUNT:CURRENCY_CODE'
RFF+VA:VAT REGISTRATION NUMBER'
NAD+MR+MESSAGE RECEIVER++PARTY NAME+STREET AND NUMBER OR POST OFFICE BOX IDENTIFIER+CITY
NAME++POSTAL IDENTIFICATION CODE'
NAD+MS+MESSAGE SENDER++PARTY NAME+STREET AND NUMBER OR POST OFFICE BOX IDENTIFIER+CITY
NAME++POSTAL IDENTIFICATION CODE'
FIH+RB+RECEIVING FINANCIAL INSTITUTION:ACCOUNT HOLDER NAME+INSTITUTION NAME CODE:25:17'
RFF+AHO:CHAMBER OF COM. REGISTRATION NUMBER'
RFF+VA:VAT REGISTRATION NUMBER'
CTA+IC+:INFORMATION CONTACT'
COM+COMMUNICATION ADDRESS IDENTIFIER:TE'
COM+COMMUNICATION ADDRESS IDENTIFIER:FX'
TAX+7+VAT+++::BTW_PERCENTAGE'
MOA+25:BTW_CHARGE_BASIS:EUR'
CUX+1:CURRENCY_CODE:4'
TDT+20+VOYAGE_NN_OUTB+1++CARRIER_CODE:172:20+++CALLSIGN:103::VESSEL_NAME'
LOC+7+LOCATION NAME CODE:139:6+TERMINAL_CODE:72:ZZZ'
DTM+178:VESSEL_ARRIVAL_DATE:102'
RFF+VON:VOYAGE_NN_INB'
LIN+CHARGE_LINE_NN++CHARGE_CODE'
IMD+++::CHARGE_NAME'
QTY+47:CHARGE_QUANTITY'
MOA+203:CHARGE_AMOUNT:EUR'
PRI+INV:CHARGE_AGREED::ABL'
ALC+C'
QTY+104:QUANTITY'
PCD+8:COTCH_PERCENTAGE:3'
MOA+23:CHARGE_AMOUNT:EUR'
LIN+EQP_CHARGE_LINE_NN++EQP_CHARGE_CODE'
QTY+47:EQP_QUANTITY'
DTM+178:DATE_IN:102'
DTM+186:DATE_OUT:102'
EQD+CN+CONTAINER_ID+SIZE:102:5++EQUIPMENT_STATUS+FULL_EMPTY_IND'
RFF+BN:BOOKINGS_NN'
UNS+S'
CNT+12:TOTAL_CHARGE_AMOUNT'
MOA+39:TOTAL_CHARGE_AMOUNT:EUR'
RFF+PQ:INVOICE_REF_NN'
DTM+171:REFERENCE DATE/TIME:203'
UNT+SEGM_COUNT+MESSAGE REFERENCE NUMBER'
UNZ+1+INTERCHANGE CONTROL REFERENCE'



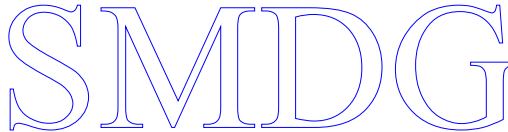
Credit Period Invoice:

UNB+UNOA:2+\$\$SENDER+\$RECEIVER+\$DATE:\$TIME+INTERCHANGE CONTROL REFERENCE'
UNH+MESSAGE REFERENCE NUMBER+INVOIC:D:00B:UN:SMDG10'
BGM+381+INVOICE_NR+9'
DTM+137:MESSAGE_DATETIME:203'
RFF+IV:INVOICE_NR'
DTM+3:INVOICE_DATE:102'
DTM+263:INVOICE_START_DATE-INVOICE_END_DATE:711'
DTM+265:INVOICE_DUE_DATE:102'
NAD+IV+INV_PARTY:160:20'
MOA+39:-138776.00:EUR'
RFF+VA:VAT REGISTRATION NUMBER'
NAD+MR+MESSAGE RECEIVER++PARTY NAME+STREET AND NUMBER OR POST OFFICE BOX IDENTIFIER+CITY
NAME++POSTAL IDENTIFICATION CODE'
NAD+MS+MESSAGE SENDER++PARTY NAME+STREET AND NUMBER OR POST OFFICE BOX IDENTIFIER+CITY
NAME++POSTAL IDENTIFICATION CODE'
FIH+PB+PAYING FINANCIAL INSTITUTION:ACCOUNT HOLDER NAME+INSTITUTION NAME CODE:25:17'
RFF+AHO:CHAMBER OF COM. REGISTRATION NUMBER'
RFF+VA:VAT REGISTRATION NUMBER'
CTA+IC+:INFORMATION CONTACT'
COM+COMMUNICATION ADDRESS IDENTIFIER:TE'
COM+COMMUNICATION ADDRESS IDENTIFIER:FX'
TAX+7+VAT+++<CODE VAT146 at 0%VAT>:::BTW_PERCENTAGE'
MOA+25:-138776.00:EUR'
CUX+1:EUR:4'
TDT+20++1++:172:20+++:103'
LOC+7+LOCATION NAME CODE:139:6+TERMINAL_CODE:72:ZZZ'
LIN+0001++102072'
IMD+++:::REBATE - CONTRACT'
QTY+47:0'
MOA+203:-138776.00:EUR'
PRI+INV:0.00::ABL'
ALC+A'
QTY+104:0'
PCD+8:0.00:3'
MOA+23:-138776.00:EUR'
UNS+S'
CNT+12:-138776.00'
MOA+39:-138776.00:EUR'
RFF+PQ:INVOICE_REF_NR'
DTM+171:REFERENCE DATE/TIME:203'
UNT+SEGM_COUNT+MESSAGE REFERENCE NUMBER'
UNZ+1+INTERCHANGE CONTROL REFERENCE'



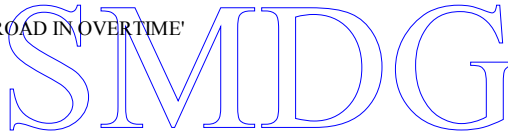
Credit Invoice:

UNB+UNOA:2+\$SENDER+\$RECEIVER+\$DATE:\$TIME+INTERCHANGE CONTROL REFERENCE'
UNH+MESSAGE REFERENCE NUMBER+INVOIC:D:00B:UN:SMDG10'
BGM+381+INVOICE_NR+9'
DTM+137:MESSAGE_DATETIME:203'
RFF+IV:INVOICE_NR'
DTM+3:INVOICE_DATE:102'
DTM+265:INVOICE_DUE_DATE:102'
NAD+IV+INV_PARTY:160:20'
MOA+39:TOTAL_CHARGE_AMOUNT:CURRENCY_CODE'
RFF+VA:VAT REGISTRATION NUMBER'
NAD+MR+MESSAGE RECEIVER++PARTY NAME+STREET AND NUMBER OR POST OFFICE BOX IDENTIFIER+CITY
NAME++POSTAL IDENTIFICATION CODE'
NAD+MS+MESSAGE SENDER++PARTY NAME+STREET AND NUMBER OR POST OFFICE BOX IDENTIFIER+CITY
NAME++POSTAL IDENTIFICATION CODE'
FII+PB+PAYING FINANCIAL INSTITUTION:ACCOUNT HOLDER NAME+INSTITUTION NAME CODE:25:17'
RFF+AHO:CHAMBER OF COM. REGISTRATION NUMBER'
RFF+VA:VAT REGISTRATION NUMBER'
CTA+IC+:INFORMATION CONTACT'
COM+COMMUNICATION ADDRESS IDENTIFIER:TE'
COM+COMMUNICATION ADDRESS IDENTIFIER:FX'
TAX+7+VAT+++<CODE VAT146 at 0%VAT>:::BTW_PERCENTAGE'
MOA+25:BTW_CHARGE_BASIS:EUR'
CUX+1:CURRENCY_CODE:4'
TDT+20+VOYAGE_NR_OUTB+1++CARRIER_CODE:172:20+++CALLSIGN:103::VESSEL_NAME'
LOC+7+LOCATION NAME CODE:139:6+TERMINAL_CODE:72:ZZZ'
DTM+178:VESSEL_ARRIVAL_DATE:102'
RFF+VON:VOYAGE_NR_INB'
LIN+CHARGE_LINE_NR++CHARGE_CODE'
IMD+++:::CHARGE_NAME'
QTY+47:CHARGE_QUANTITY'
MOA+203:CHARGE_AMOUNT:EUR'
PRI+INV:CHARGE_AGREED::ABL'
ALC+A'
QTY+104:QUANTITY'
PCD+8:COTCH_PERCENTAGE:3'
MOA+23:CHARGE_AMOUNT:EUR'
LIN+EQP_CHARGE_LINE_NR++EQP_CHARGE_CODE'
QTY+47:EQP_QUANTITY'
DTM+178:DATE_IN:102'
DTM+186:DATE_OUT:102'
EQD+CN+CONTAINER_ID+SIZETYPE:102:5++EQUIPMENT_STATUS+FULL_EMPTY_IND'
RFF+BN:BOOKINGS_NR'
UNS+S'
CNT+12:TOTAL_CHARGE_AMOUNT'
MOA+39:TOTAL_CHARGE_AMOUNT:EUR'
RFF+PQ:INVOICE_REF_NR'
DTM+171:REFERENCE DATE/TIME:203'
UNT+SEGM_COUNT+MESSAGE REFERENCE NUMBER'
UNZ+1+INTERCHANGE CONTROL REFERENCE'



Overtime Invoice:

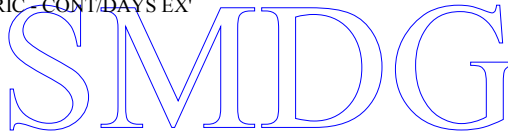
UNB+UNOA:2+\$SENDER+\$RECEIVER+\$DATE:\$TIME+INTERCHANGE CONTROL REFERENCE'
UNH+MESSAGE REFERENCE NUMBER+INVOIC:D:00B:UN:SMDG10'
BGM+383+INVOICE_NR+9'
DTM+137:MESSAGE_DATETIME:203'
RFF+IV:INVOICE_NR'
DTM+3:INVOICE_DATE:102'
DTM+265:INVOICE_DUE_DATE:102'
NAD+IV+INV_PARTY:160:20'
MOA+39:10.20:EUR'
RFF+VA:VAT REGISTRATION NUMBER'
NAD+MR+MESSAGE RECEIVER++PARTY NAME+STREET AND NUMBER OR POST OFFICE BOX IDENTIFIER+CITY
NAME++POSTAL IDENTIFICATION CODE'
NAD+MS+MESSAGE SENDER++PARTY NAME+STREET AND NUMBER OR POST OFFICE BOX IDENTIFIER+CITY
NAME++POSTAL IDENTIFICATION CODE'
FIH+PB+PAYING FINANCIAL INSTITUTION:ACCOUNT HOLDER NAME+INSTITUTION NAME CODE:25:17'
RFF+AHO:CHAMBER OF COM. REGISTRATION NUMBER'
RFF+VA:VAT REGISTRATION NUMBER'
CTA+IC+:INFORMATION CONTACT'
COM+COMMUNICATION ADDRESS IDENTIFIER:TE'
COM+COMMUNICATION ADDRESS IDENTIFIER:FX'
TAX+7+VAT+++<CODE VAT146 at 0%VAT>:::BTW_PERCENTAGE'
MOA+25:10.20:EUR'
CUX+1:EUR:4'
TDT+20+VOYAGE_NR_OUTB+1++CARRIER_CODE:172:20+++CALLSIGN:103::VESSEL_NAME'
LOC+7+LOCATION NAME CODE:139:6+TERMINAL_CODE:72:ZZZ'
DTM+178:VESSEL_ARRIVAL_DATE:102'
RFF+VON:VOYAGE_NR_INB'
LIN+0001++207049'
IMD+++::RECEIVING/DELIVERING BY ROAD IN OVERTIME'
QTY+47:1'
MOA+203:10.20:EUR'
PRI+INV:10.20::ABL'
ALC+C'
QTY+104:1'
PCD+8:0.00:3'
MOA+23:10.20:EUR'
LIN+0001++207049'
QTY+47:1'
DTM+178:DATE_IN:102'
DTM+186:DATE_OUT:102'
EQD+CN+CONTAINER_ID+SIZETYPE:102:5++EQUIPMENT_STATUS+FULL_EMPTY_IND'
RFF+BN:BOOKINGS_NR'
UNS+S'
CNT+12:10.20'
MOA+39:10.20:EUR'
RFF+PQ:INVOICE_REF_NR'
DTM+171:REFERENCE DATE/TIME:203'
UNT+SEGM_COUNT+MESSAGE REFERENCE NUMBER'
UNZ+1+INTERCHANGE CONTROL REFERENCE'





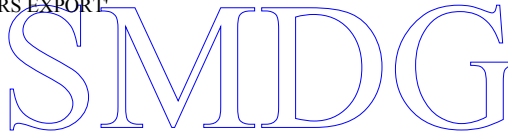
Reefer Invoice:

UNB+UNOA:2+\$SENDER+\$RECEIVER+\$DATE:\$TIME+INTERCHANGE CONTROL REFERENCE'
UNH+MESSAGE REFERENCE NUMBER+INVOIC:D:00B:UN:SMDG10'
BGM+383+INVOICE_NNR+9'
DTM+137:MESSAGE_DATETIME:203'
RFF+IV:INVOICE_NNR'
DTM+3:INVOICE_DATE:102'
DTM+265:INVOICE_DUE_DATE:102'
NAD+IV+INV_PARTY:160:20'
MOA+39:432:EUR'
RFF+VA:VAT REGISTRATION NUMBER'
NAD+MR+MESSAGE RECEIVER++PARTY NAME+STREET AND NUMBER OR POST OFFICE BOX IDENTIFIER+CITY
NAME++POSTAL IDENTIFICATION CODE'
NAD+MS+MESSAGE SENDER++PARTY NAME+STREET AND NUMBER OR POST OFFICE BOX IDENTIFIER+CITY
NAME++POSTAL IDENTIFICATION CODE'
FII+RB+RECEIVING FINANCIAL INSTITUTION:ACCOUNT HOLDER NAME+INSTITUTION NAME CODE:25:17'
RFF+AHO:CHAMBER OF COM. REGISTRATION NUMBER'
RFF+VA:VAT REGISTRATION NUMBER'
CTA+IC+:INFORMATION CONTACT'
COM+COMMUNICATION ADDRESS IDENTIFIER:TE'
COM+COMMUNICATION ADDRESS IDENTIFIER:FX'
TAX+7+VAT+++::BTW_PERCENTAGE'
MOA+25:432:EUR'
CUX+1:EUR:4'
TDT+20+VOYAGE_NNR_OUTB+1++CARRIER_CODE:172:20+++CALLSIGN:103::VESSEL_NAME'
LOC+7+LOCATION NAME CODE:139:6+TERMINAL_CODE:72:ZZZ'
DTM+178:VESSEL_ARRIVAL_DATE:102'
RFF+VON:VOYAGE_NNR_INB'
LIN+0001++110001'
IMD+++::REEFERCONNECTION ELECTRIC - CONT/DAYS EX'
QTY+47:24'
MOA+203:432:EUR'
PRI+INV:18::ABL'
ALC+C'
QTY+104:24'
PCD+8:0.00:3'
MOA+23:432:EUR'
LIN+0001++110001'
QTY+47:11'
DTM+178:20121217:102'
DTM+186:20121227:102'
EQD+CN+CONTAINER_ID+SIZETYPE:102:5++EQUIPMENT_STATUS+FULL_EMPTY_IND'
RFF+BN:BOOKINGS_NNR'
LIN+0001++110001'
QTY+47:7'
DTM+178:20121221:102'
DTM+186:20121227:102'
EQD+CN+CONTAINER_ID+SIZETYPE:102:5++EQUIPMENT_STATUS+FULL_EMPTY_IND'
RFF+BN:BOOKINGS_NNR'
LIN+0001++110001'
QTY+47:6'
DTM+178:20121222:102'
DTM+186:20121227:102'
EQD+CN+CONTAINER_ID+SIZETYPE:102:5++EQUIPMENT_STATUS+FULL_EMPTY_IND'
RFF+BN:BOOKINGS_NNR'
UNB+S'
CNT+12:432'
MOA+39:432:EUR'
RFF+PQ:INVOICE_REF_NNR'
DTM+171:REFERENCE DATE/TIME:203'
UNT+SEGM_COUNT+MESSAGE REFERENCE NUMBER'
UNZ+1+INTERCHANGE CONTROL REFERENCE'



Storage Invoice:

UNB+UNOA:2+\$\$SENDER+\$RECEIVER+\$DATE:\$TIME+INTERCHANGE CONTROL REFERENCE'
UNH+MESSAGE REFERENCE NUMBER+INVOIC:D:00B:UN:SMDG10'
BGM+383+INVOICE_NR+9'
DTM+137:MESSAGE_DATETIME:203'
RFF+IV:INVOICE_NR'
DTM+3:INVOICE_DATE:102'
DTM+265:INVOICE_DUE_DATE:102'
NAD+IV+INV_PARTY:160:20'
MOA+39:128.00:EUR'
RFF+VA:VAT REGISTRATION NUMBER'
NAD+MR+MESSAGE RECEIVER++PARTY NAME+STREET AND NUMBER OR POST OFFICE BOX IDENTIFIER+CITY
NAME++POSTAL IDENTIFICATION CODE'
NAD+MS+MESSAGE SENDER++PARTY NAME+STREET AND NUMBER OR POST OFFICE BOX IDENTIFIER+CITY
NAME++POSTAL IDENTIFICATION CODE'
FII+PB+PAYING FINANCIAL INSTITUTION:ACCOUNT HOLDER NAME+INSTITUTION NAME CODE:25:17'
RFF+AHO:CHAMBER OF COM. REGISTRATION NUMBER'
RFF+VA:VAT REGISTRATION NUMBER'
CTA+IC+:INFORMATION CONTACT'
COM+COMMUNICATION ADDRESS IDENTIFIER:TE'
COM+COMMUNICATION ADDRESS IDENTIFIER:FX'
TAX+7+VAT+++<CODE VAT146 at 0%VAT>:::BTW_PERCENTAGE'
MOA+25:128.00:EUR'
CUX+1:EUR:4'
TDT+20+VOYAGE_NR_OUTB+1++CARRIER_CODE:172:20+++CALLSIGN:103::VESSEL_NAME'
LOC+7+LOCATION NAME CODE:139:6+TERMINAL_CODE:72:ZZZ'
DTM+178:VESSEL_ARRIVAL_DATE:102'
RFF+VON:VOYAGE_NR_INB'
LIN+0001++210001'
IMD+++:::STORAGE 20 FEET CONTAINERS EXPORT'
QTY+47:12'
MOA+203:96.00:EUR'
PRI+INV:8.00::ABL'
ALC+C'
QTY+104:47'
PCD+8:0.00:3'
MOA+23:96.00:EUR'
LIN+0001++210001'
QTY+47:2'
DTM+178:20121211:102'
DTM+186:20121219:102'
EQD+CN+CONTAINER_ID+SIZETYPE:102:5++EQUIPMENT_STATUS+FULL_EMPTY_IND'
RFF+BN:BOOKINGS_NR'
LIN+0001++210001'
QTY+47:2'
DTM+178:20121211:102'
DTM+186:20121219:102'
EQD+CN+CONTAINER_ID+SIZETYPE:102:5++EQUIPMENT_STATUS+FULL_EMPTY_IND'
RFF+BN:BOOKINGS_NR'
LIN+0001++210001'
QTY+47:2'
DTM+178:20121211:102'
DTM+186:20121219:102'
EQD+CN+CONTAINER_ID+SIZETYPE:102:5++EQUIPMENT_STATUS+FULL_EMPTY_IND'
RFF+BN:BOOKINGS_NR'
LIN+0001++210001'
QTY+47:3'
DTM+178:20121211:102'
DTM+186:20121220:102'
EQD+CN+CONTAINER_ID+SIZETYPE:102:5++EQUIPMENT_STATUS+FULL_EMPTY_IND'
RFF+BN:BOOKINGS_NR'
LIN+0001++210001'
QTY+47:3'
DTM+178:20121211:102'
DTM+186:20121220:102'





EQD+CN+CONTAINER_ID+SIZETYPE:102:5++EQUIPMENT_STATUS+FULL_EMPTY_IND'
RFF+BN:BOOKINGS_NR'
LIN+0002++210004'
IMD+++::STORAGE 40 FEET CONTAINERS EXPORT'
QTY+47:2'
MOA+203:32.00:EUR'
PRI+INV:16.00::ABL'
ALC+C'
QTY+104:9'
PCD+8:0.00:3'
MOA+23:32.00:EUR'
LIN+0002++210004'
QTY+47:2'
DTM+178:20121212:102'
DTM+186:20121220:102'
EQD+CN+CONTAINER_ID+SIZETYPE:102:5++EQUIPMENT_STATUS+FULL_EMPTY_IND'
RFF+BN:BOOKINGS_NR'
UNS+S'
CNT+12:128.00'
MOA+39:128.00:EUR'
RFF+PQ:INVOICE_REF_NR'
DTM+171:REFERENCE DATE/TIME:203'
UNT+SEGM_COUNT+MESSAGE REFERENCE NUMBER'
UNZ+1+INTERCHANGE CONTROL REFERENCE'

SMDG

Stripping Invoice:

UNB+UNOA:2+\$\$SENDER+\$RECEIVER+\$DATE:\$TIME+INTERCHANGE CONTROL REFERENCE'
UNH+MESSAGE REFERENCE NUMBER+INVOIC:D:00B:UN:SMDG10'
BGM+383+INVOICE_NR+9'
DTM+137:MESSAGE_DATETIME:203'
RFF+IV:INVOICE_NR'
DTM+3:INVOICE_DATE:102'
DTM+265:INVOICE_DUE_DATE:102'
NAD+IV+INV_PARTY:160:20'
MOA+39:TOTAL_CHARGE_AMOUNT:CURRENCY_CODE'
RFF+VA:VAT REGISTRATION NUMBER'
NAD+MR+MESSAGE RECEIVER++PARTY NAME+STREET AND NUMBER OR POST OFFICE BOX IDENTIFIER+CITY
NAME++POSTAL IDENTIFICATION CODE'
NAD+MS+MESSAGE SENDER++PARTY NAME+STREET AND NUMBER OR POST OFFICE BOX IDENTIFIER+CITY
NAME++POSTAL IDENTIFICATION CODE'
FIH+RB+RECEIVING FINANCIAL INSTITUTION:ACCOUNT HOLDER NAME+INSTITUTION NAME CODE:25:17'
RFF+AHO:CHAMBER OF COM. REGISTRATION NUMBER'
RFF+VA:VAT REGISTRATION NUMBER'
CTA+IC+:INFORMATION CONTACT'
COM+COMMUNICATION ADDRESS IDENTIFIER:TE'
COM+COMMUNICATION ADDRESS IDENTIFIER:FX'
TAX+7+VAT+++::BTW_PERCENTAGE'
MOA+25:BTW_CHARGE_BASIS:EUR'
CUX+1:CURRENCY_CODE:4'
TDT+20+VOYAGE_NR_OUTB+1++CARRIER_CODE:172:20+++CALLSIGN:103::VESSEL_NAME'
LOC+7+LOCATION NAME CODE:139:6+TERMINAL_CODE:72:ZZZ'
DTM+178:VESSEL_ARRIVAL_DATE:102'
RFF+VON:VOYAGE_NR_INB'
LIN+0001++216069'
IMD+++::STRIPPING 20 FEET CONTAINER'
QTY+47:1'
MOA+203:325.58:EUR'
PRI+INV:325.58::ABL'
ALC+C'
QTY+104:1'
PCD+8:0.00:3'
MOA+23:325.58:EUR'
LIN+0001++216069'
QTY+47:1'
DTM+178:DATE_IN:102'
DTM+186:DATE_OUT:102'
EQD+CN+CONTAINER_ID+SIZETYPE:102:5++EQUIPMENT_STATUS+FULL_EMPTY_IND'
UNS+S'
CNT+12:325.58'
MOA+39:325.58:EUR'
RFF+PQ:INVOICE_REF_NR'
DTM+171:REFERENCE DATE/TIME:203'
UNT+SEGM_COUNT+MESSAGE REFERENCE NUMBER'
UNZ+1+INTERCHANGE CONTROL REFERENCE'

