



User Manual
(Implementation Guide)

UN/EDIFACT MESSAGE

COARRI
(Container discharge/loading order)

Version 1.6 - 2

D.95B

Version:	1.6 - 2
Date:	June 2016
Source:	SMDG User Group for Shipping Lines and Container Terminals

© SMDG

Information in this document is subject to change without notice.

The SMDG claims full copyright to this manual and its contents, however, the manual may be copied and used by anyone, without the consent of SMDG.

It is not allowed to change the contents of this manual!

Revision History

Version	Date	Author(s)	Revision Notes
1.2	March 2003	SMDG	Created version
1.6	October 2015	Paul Wauters	Extended for Gross Weight Verification
1.6-1	January 2016	Paul Wauters	Updated UNECE official codes/qualifiers
1.6-2	June 2016	Paul Wauters	Aligned VGM additions with existing info

CONTENTS

0.	Introduction	4
1.	General	4
2.	Status Indicators and Usage Indicators....	5
3.	Document Maintenance.....	6
4.	Versions	7
5.	Segment Table	8
6.	Message Structure Diagram	10
7.	Message Description	13
8.	Sample Message	67

0. INTRODUCTION

This User Manual has been developed by the SMDG User Group for Shipping Lines and Container Terminals, a “Global User Group” under the auspices of UN/CEFACT.

This User Manual is based upon the UN/EDIFACT D.95B directory and the ITIGG document “Principles and Rules for the implementation of transport EDI messages – Transport Equipment Movements – Maritime-related container messages”, version 1.3.1, dated September 1996.

This User Manual provides guidance as to the recommended usage of codes, qualifiers, data elements, composites, segments and groups of segments in the D.95B COARRI message. The intention is to assist developers to ensure consistent use of the COARRI message throughout the worldwide trade and transport community.

Syntax identifier: always 'UNOA', indicating the use of level 'A' character set. Syntax version number: always '2'.

1. GENERAL

Formal Definition

"A message by which the container terminal reports that the containers specified have been discharged from a seagoing vessel (discharged as ordered, overlanded or shortlanded), or have been loaded into a seagoing vessel. This message is part of a total set of container-related messages. These messages serve to facilitate the intermodal handling of containers by streamlining the information exchange. The business scenario for the container messages is clarified in a separate document, called "Guide to the scenario of EDIFACT container messages".

The COARRI message is used to transmit a confirmation that containers have been loaded onto or have been discharged from a seagoing vessel. This message is commonly sent by the terminal operator handling the vessel to the shipping line (or it's agent).

A message contains a report for either discharged or loaded containers or other equipment from or into the vessel. The term equipment in this manual includes not only supporting items (e.g. reefer generator) but also uncontainerised cargo.

A message contains information on only one conveyance of a seagoing container vessel either arrived or departed.

One report does not necessarily cover all containers being discharged/loaded, this being the case if two or more liner agents or shipowners supplied orders to the terminal referring to one vessel conveyance.

The COARRI message may also be used to confirm that containers have been shifted on board the vessel or that containers have been discharged and reloaded (re-stowed) onto the vessel.

The COARRI message as discharge report can also include information relating to transshipment (= import of transshipment containers): on the same terminal containers have been discharged from vessel X for loading into vessel Y.

2. STATUS INDICATORS AND USAGE INDICATORS

Status Indicators

Status Indicators (“M” and “C”) form part of the UN/EDIFACT standard and indicate a minimum requirement to fulfil the needs of the message structure. They are not adequate for implementation purposes. The Status Indicators are :

<i>Value</i>	<i>Description</i>
M	Mandatory The entity marked as such must appear in all messages, and apply to these messages as well as to any associated implementation guidelines (and consequently is also a Usage Indicator).
C	Conditional The entity is used by agreement between trading partners.

Usage Indicators

Usage Indicators are implementation–related indicators that further detail the use of “Conditional” Status Indicators. Usage Indicators are applied at all levels of the guidelines and shown adjacent to data items such as segment groups, segments, composite data elements and simple data elements. They dictate the agreed usage of the data items or entities. The Usage Indicators are :

<i>Value</i>	<i>Description</i>
M	Mandatory Indicates the item is mandatory in the UN/EDIFACT message.
R	Required Indicates the item must be transmitted in this implementation.
D	Dependent Indicates that the use of the item is depending on a well-defined condition or set of conditions. These conditions must be clearly specified in the relevant implementation guideline.
O	Optional Indicates that this item is at the need or discretion of both trading partners.
X	Not Used Indicates that this item is not to be used in this implementation.

Where an item within a segment group, segment or composite data element is marked with Usage Indicators “M” or “R”, but the segment group, segment or composite data element has been marked “O” or “D” (or for that matter “X”), the item is only to be transmitted when the segment group, segment or composite of which it is a part, is used.

3. DOCUMENT MAINTENANCE

The data content of this document has been prepared and approved by SMDG and no alteration may be made to the content of this document without reference to and approval of SMDG.

Any remarks, questions, amendments or requested alterations to this document are to be addressed to :

SMDG Secretariat
Seattleweg 7
3195 ND Rotterdam – Pernis
The Netherlands

Phone: +31- (0)10 - 2941100
Fax: +31- (0)10 - 2941105
E-mail: secretariat@smdg.org
WWW www.smdg.org

Paul Wauters
c/o PSA Antwerp / Cosmos NV.
Napelsstraat 79
2000 Antwerp
Belgium

Phone: +32 – (0)3 2607056
Facsimile: +32 – (0)3 2606161
E-mail paul.wauters@globalpsa.com

4. VERSIONS

SMDG16.

Version 1.6 (SMDG16), first released October 2015, is the successor of version 1.2 (ITIG12), released October 1996, includes amendments for transmission of data specifying a container's verified gross mass (VGM) according to SOLAS regulation 2, chapter VI, paragraphs 4 to 6.

With a short deadline (July 2016) it was decided to do minimum changes - what was considered as an absolute (legal) minimum - to limit the impact on EDI and backend systems of different organizations. It was decided to make additions in the current version without structure changes via existing segments and data elements. Only necessary new qualifiers and/or codes will be requested via DMR.

To handle the new SOLAS requirements on Gross Mass Verification, DMR (Data Maintenance Request) for new codes, to handle the new entities, will be submitted to UN/CEFACT.

The acceptance of these DMR's are available as from version D.15B The Message Implementation Guides can use 'Temporary' codes indicated between square brackets [xxx] and codes only available in a later version.

Changes for SOLAS in this manual: (codes used as available from UN/EDIFACT version D.15B.)

EQD group segments additions:

MEA – Measurements

VGM – Verified Gross Mass (weight)

NAD – Name and Address

AM – Authorized official – person signing for Verified Gross Mass

SPC – SOLAS Packed Container Verified Gross Mass Responsible party

DTM – Date/Time

798 - Verified gross mass determination date/time - Date/Time when a gross mass (weight) of a packed container was obtained according to SOLAS chapter VI, regulation 2, paragraphs 4-6

FTX – Free text (ABS) container condition – SMDG maintained codes

SM1 – Solas Method 1 – Verified Gross Mass obtained by weighing

SM2 – Solas Method 2 – Verified Gross Mass obtained by calculation

RFF – References

VGR – Verified Gross Mass Reference – link to VGM information

COARRI - Container Discharge/Loading Report Message

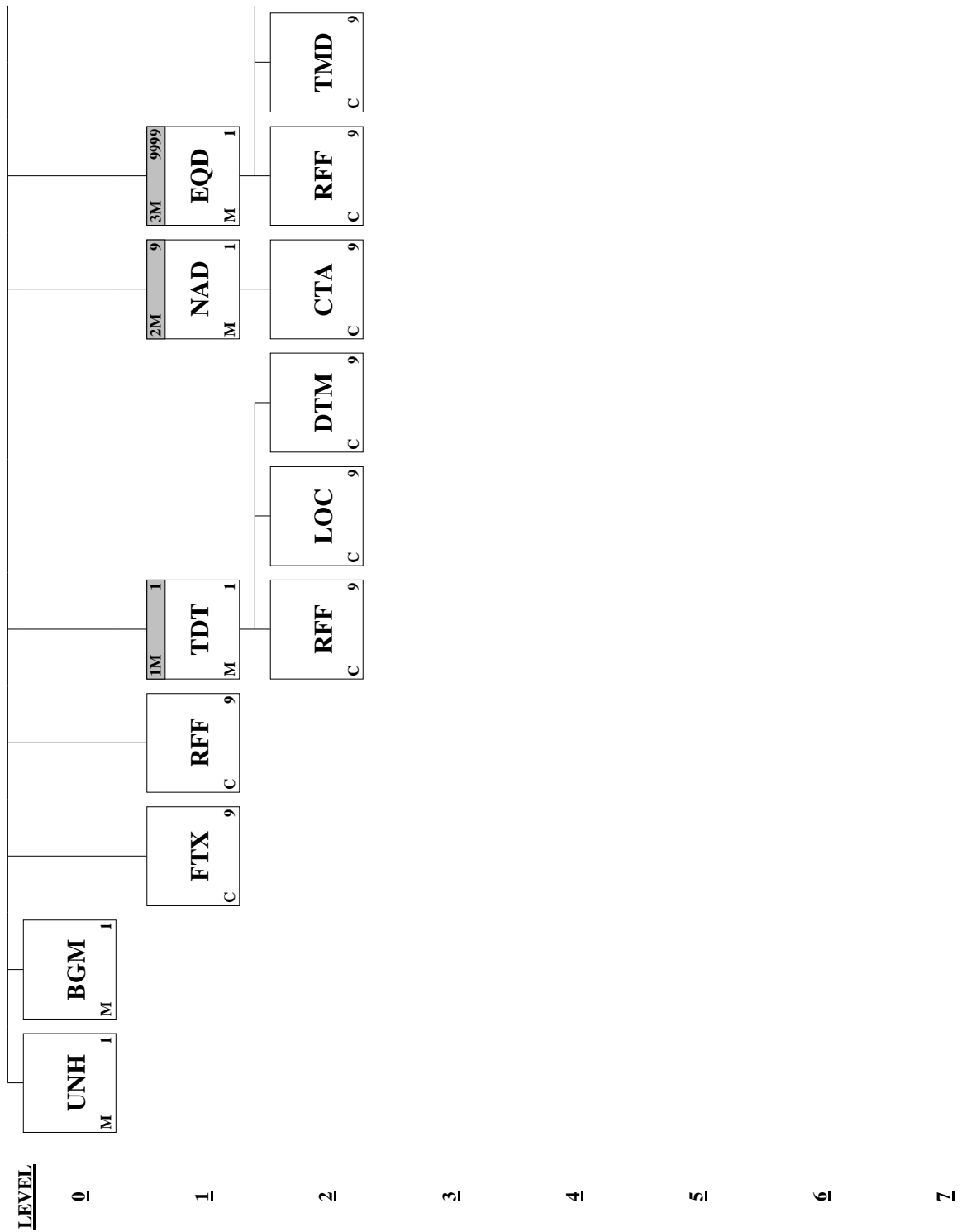
Introduction:

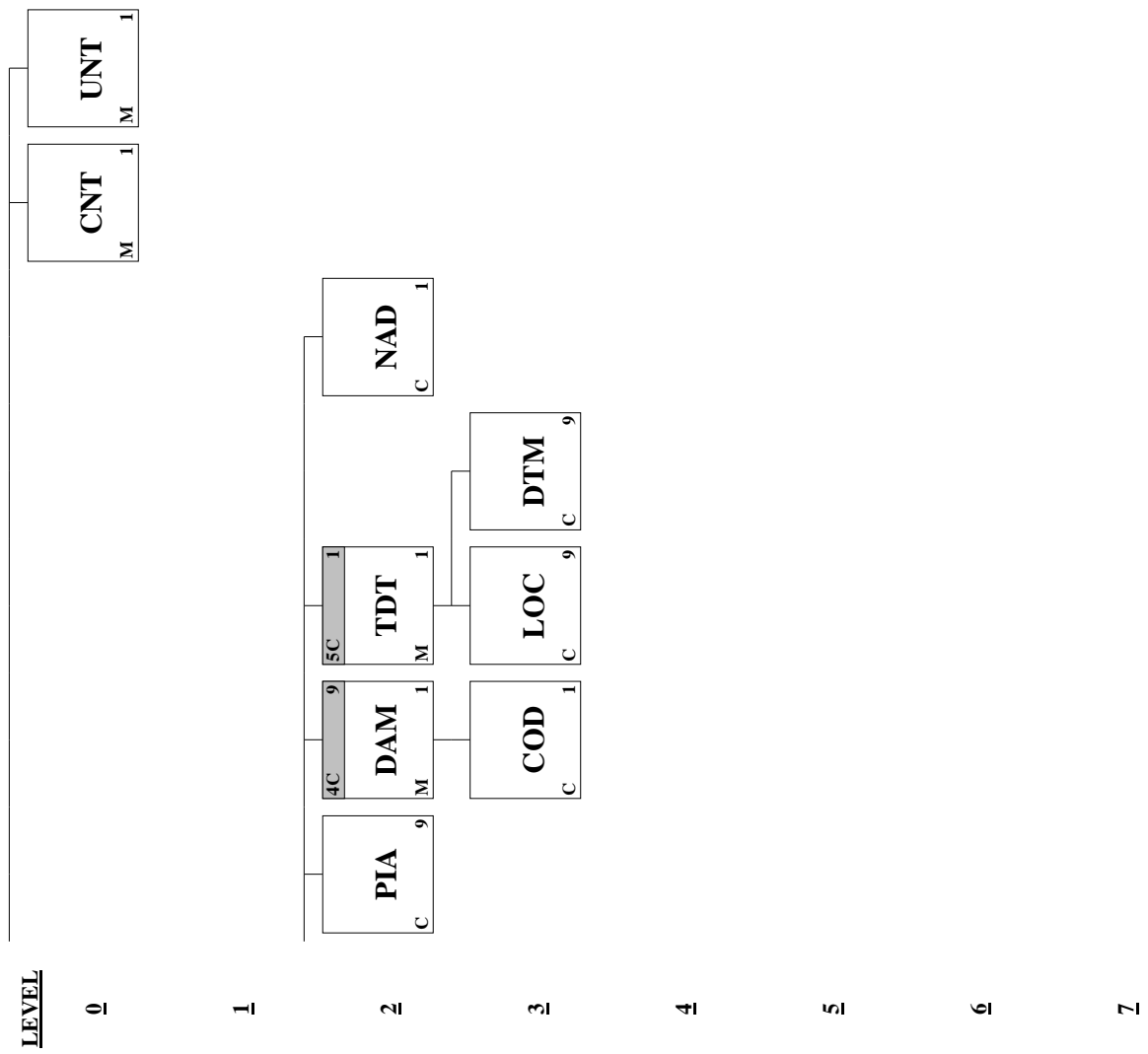
A message by which the container terminal reports that the containers specified have been discharged from a seagoing vessel (discharged as ordered, overlanded or shortlanded), or have been loaded into a seagoing vessel.

This message is part of a total set of container-related messages. These messages serve to facilitate the intermodal handling of containers by streamlining the information exchange. The business scenario for the container messages is clarified in a separate document, called: 'Guide to the scenario of EDIFACT container messages'.

<u>MIG Usage</u>	<u>Pos. No.</u>	<u>Seg. ID</u>	<u>Name</u>	<u>Directory Usage</u>	<u>Max.Use</u>	<u>Group Repeat</u>
M	0010	UNH	Message Header	M	1	
M	0020	BGM	Beginning of Message	M	1	
O	0030	FTX	Free Text	C	9	
O	0040	RFF	Reference	C	9	
M	0050		Segment Group 1: TDT-RFF-LOC-DTM	M		1
M	0060	TDT	Details of Transport	M	1	
O	0070	RFF	Reference	C	9	
R	0080	LOC	Place/Location Identification	C	9	
O	0090	DTM	Date/Time/Period	C	9	
M	0100		Segment Group 2: NAD-CTA	M		9
M	0110	NAD	Name and Address	M	1	
X	0120	CTA	Contact Information	C	9	
M	0130		Segment Group 3: EQD-RFF-TMD-DTM-LOC-MEA-DIM-TMP-RNG-SEL-FTX-DGS-EQA-PIA-SG4-SG5-NAD	M		9999
M	0140	EQD	Equipment Details	M	1	
O	0150	RFF	Reference	C	9	
O	0160	TMD	Transport Movement Details	C	9	
O	0170	DTM	Date/Time/Period	C	9	
R	0180	LOC	Place/Location Identification	C	9	
R	0190	MEA	Measurements	C	9	
D	0200	DIM	Dimensions	C	9	
D	0210	TMP	Temperature	C	9	
D	0220	RNG	Range Details	C	9	
O	0230	SEL	Seal Number	C	9	
O	0240	FTX	Free Text	C	9	
D	0250	DGS	Dangerous Goods	C	9	
O	0260	EQA	Attached Equipment	C	9	
X	0270	PIA	Additional Product Id	C	9	
O	0280		Segment Group 4: DAM-COD	C		9
M	0290	DAM	Damage	M	1	
X	0300	COD	Component Details	C	1	

O	0310		Segment Group 5: TDT-LOC-DTM	C	1
M	0320	TDT	Details of Transport	M	1
O	0330	LOC	Place/Location Identification	C	9
O	0340	DTM	Date/Time/Period	C	9
D	0350	NAD	Name and Address	C	1
M	0360	CNT	Control Total	M	1
M	0370	UNT	Message Trailer	M	1





Segment: UNH Message Header**Position:** 0010**Group:****Level:** 0**Usage:** Mandatory**Max Use:** 1

Purpose: A service segment starting and uniquely identifying a message. The message type code for the Container discharge/loading order message is COARRI.
 Note: Container discharge/loading order messages conforming to this document must contain the following data in segment UNH, composite S009:
 Data element 0065 COARRI 0052 D 0054 95B 0051 UN

Comments:

Notes: *Sample segment :*
UNH+100011544142+COARRI:D:95B:UN:SMDG16'

Data Element Summary

	<u>Data Element</u>	<u>Component Element</u>	<u>Name</u>	<u>Attributes</u>
M	0062		MESSAGE REFERENCE NUMBER <i>Unique message reference assigned by the sender. This reference must also be transmitted in the UNT segment.</i>	M 1 an..14
M	S009		MESSAGE IDENTIFIER	M 1
M		0065	Message type identifier <i>COARRI Container discharge/loading report message</i>	M an..6
M		0052	Message type version number <i>D Draft version/UN/EDIFACT Directory</i>	M an..3
M		0054	Message type release number <i>95B Release 19905 - B</i>	M an..3
M		0051	Controlling agency <i>UN UN/CEFACT</i>	M an..2
R		0057	Association assigned code <i>SMDG16 SMDG Version 1.6</i>	C an..6
O	0068		COMMON ACCESS REFERENCE <i>Additional message reference (if required)</i>	C 1 an..35
X	S010		STATUS OF THE TRANSFER	C 1
X		0070	Sequence message transfer number	M n..2
X		0073	First/last sequence message transfer indication	C a1

Segment: **BGM** Beginning of Message
Position: 0020
Group:
Level: 0
Usage: Mandatory
Max Use: 1
Purpose: A segment to indicate the beginning of a message and to transmit identifying number and further specification of the message type (in data element 1001: Document name code), such as Loading report, Discharge report.
Notes: *Sample segment :*
BGM+270+100011544142+9'

Data Element Summary

	Data Element	Component Element	Name	Attributes
R	C002		DOCUMENT/MESSAGE NAME	C 1
R		1001	Document name code	C an..3
			98 Discharge report	
			270 Loading report	
X		1131	Code list identification code	C an..17
X		3055	Code list responsible agency code	C an..3
X		1000	Document name	C an..35
R	1004		DOCUMENT/MESSAGE NUMBER	C 1 an..35
			<i>Sender's unique reference number: Reference allocated by the sender individually, taken from the application.</i>	
			<i>Recommendation: In order to detect missing messages, a sequence number CAN be used which is incremented by the sender for each message type/receiver (format CCYYNNNNNNN, indicating 4 digits for the year, 7 digits for the sequence number).</i>	
R	1225		MESSAGE FUNCTION, CODED	C 1 an..3
			2 Addition	
			3 Delete	
			4 Change	
			5 Replace	
			9 Original	
			22 Final	
			33 Change in header section	
O	4343		RESPONSE TYPE CODE	C 1 an..3
			AB Message acknowledgement	

N.B. If in element 1225 the code values 2,3,4 or 5 are used the top level RFF (ACW) shall indicate the relation to a previous message.

Segment: FTX Free Text**Position:** 0030**Group:****Level:** 1**Usage:** Conditional (Optional)**Max Use:** 9**Purpose:** A segment to specify free form or processable supplementary information, such as: - change information**Data Element Summary**

<u>User</u>	<u>Data</u>	<u>Component</u>	<u>Name</u>	<u>Attributes</u>
<u>Attribute</u>	<u>Element</u>	<u>Element</u>		
M	4451		TEXT SUBJECT QUALIFIER Code specifying subject of a free text. <i>OSI Other service information</i>	M an..3
X	4453		TEXT FUNCTION, CODED	C an..3
O	C107		TEXT REFERENCE Coded reference to a standard text and its source.	C
M		4441	Free text, coded <i>D Discharge</i> <i>L Load</i>	M an..3
X		1131	Code list qualifier	C an..3
X		3055	Code list responsible agency, coded	C an..3
X	C108		TEXT LITERAL Free text; one to five lines.	C
X		4440	Free text Free text field available to the message sender for information.	M an..70
X		4440	Free text	C an..70
X		4440	Free text	C an..70
X		4440	Free text	C an..70
X		4440	Free text	C an..70
X	3453		LANGUAGE, CODED Code of language (ISO 639-1988).	C an..3

Segment: **RFF** Reference
Position: 0040
Group:
Level: 1
Usage: Conditional (Optional)
Max Use: 9
Purpose: A segment to express a reference which applies to the entire message, such as: -
 container discharge/loading order reference - reference to previous message

Data Element Summary

<u>User</u>	<u>Data</u>	<u>Component</u>	<u>Name</u>	<u>Attributes</u>
<u>Attribute</u>	<u>Element</u>	<u>Element</u>		
M	C506		REFERENCE Identification of a reference.	M
M		1153	Reference qualifier <i>ACW</i> Reference number to previous message (see note BGM)	M an..3
R		1154	Reference number Identification number the nature and function of which can be qualified by an entry in data element 1153 Reference qualifier. The document/message number (BGM 1004) of a previous message (in case of 'ACW' in 1153)	C an..35
X		1156	Line number Number of the line in the document/message referenced in 1154 Reference number.	C an..6
X		4000	Reference version number To uniquely identify a reference by its revision number.	C an..35

Group: **TDT** Segment Group 1: Details of Transport
Position: 0050
Group:
Level: 1
Usage: Mandatory
Max Use: 1
Purpose: A group of segments to indicate the main carriage means of transport.

Segment Summary

<u>User</u>	<u>Pos.</u>	<u>Seg.</u>		<u>Req.</u>	<u>Max.</u>	<u>Group:</u>
<u>Attribute</u>	<u>No.</u>	<u>ID</u>	<u>Name</u>	<u>Des.</u>	<u>Use</u>	<u>Repeat</u>
	0060	TDT	Details of Transport	M	1	
	0070	RFF	Reference	C	9	
	0080	LOC	Place/Location Identification	C	9	
	0090	DTM	Date/Time/Period	C	9	

Segment: **TDT** Details of Transport
Position: 0060 (Trigger Segment)
Group: Segment Group 1 (Details of Transport) Mandatory
Level: 1
Usage: Mandatory
Max Use: 1
Purpose: A segment identifying the voyage of the vessel relevant to the message (main transport).

Data Element Summary

User	Data	Component		
<u>Attribute</u>	<u>Element</u>	<u>Element</u>	<u>Name</u>	<u>Attributes</u>
M	8051		TRANSPORT STAGE QUALIFIER Qualifier giving a specific meaning to the transport details. <i>20 Main-carriage transport</i>	M an..3
D	8028		CONVEYANCE REFERENCE NUMBER Unique reference given by the carrier to a certain journey or departure of a means of transport (generic term). <i>The vessel operator's voyage number (Main carriage)</i>	C an..17
R	C220		MODE OF TRANSPORT Method of transport code or name. Code preferred.	C
R		8067	Mode of transport, coded Coded method of transport used for the carriage of the goods. <i>1 Maritime transport (ocean)</i> <i>8 Inland Water</i>	C an..3
X		8066	Mode of transport Method of transport used for the carriage of the goods.	C an..17
X	C228		TRANSPORT MEANS Code and/or name identifying the type of means of transport.	C
X		8179	Type of means of transport identification Code defining the type of the means of transport being utilized.	C an..8
X		8178	Type of means of transport Description of the type of the means of transport being utilized.	C an..17
R	C040		CARRIER Identification of a carrier by code and/or by name. Code preferred.	C
R		3127	Carrier identification Identification of party undertaking or arranging transport of goods between named points. <i>Ship operator's name, coded</i>	C an..17
O		1131	Code list qualifier Identification of a code list. <i>172 Carrier code</i>	C an..3
O		3055	Code list responsible agency, coded Code identifying the agency responsible for a code list. <i>20 BIC (Bureau International des Containeurs)</i> <i>87 Assigned by carrier</i> <i>166 US, National Motor Freight Classification</i>	C an..3

			<i>Association/SCAC</i>		
X		3128	Carrier name	C	an..35
			Name of party undertaking or arranging transport of goods between named points.		
X	8101		TRANSIT DIRECTION, CODED	C	an..3
			Identification of the point of origin and point of direction.		
X	C401		EXCESS TRANSPORTATION INFORMATION	C	
X		8457	Excess transportation reason, coded	M	an..3
X		8459	Excess transportation responsibility, coded	M	an..3
X		7130	Customer authorization number	C	an..17
R	C222		TRANSPORT IDENTIFICATION	C	
			Code and/or name identifying the means of transport.		
R		8213	Id. of means of transport identification	C	an..9
			Identification of the means of transport by name or number.		
			<i>Vessel code</i>		
			1. international radio call sign (recommended)		
			2. Lloyd's number		
R		1131	Code list qualifier	C	an..3
			Identification of a code list.		
			103	<i>Radio Call sign directory</i>	
			146	<i>Lloyd's register of ships</i>	
X		3055	Code list responsible agency, coded	C	an..3
			Code identifying the agency responsible for a code list.		
O		8212	Id. of the means of transport	C	an..35
			Identification of the means of transport by name or number.		
			<i>Name of the vessel</i>		
X		8453	Nationality of means of transport, coded	C	an..3
			Coded name of the country in which a means of transport is registered.		
X	8281		TRANSPORT OWNERSHIP, CODED	C	an..3

Segment: **RFF** Reference
Position: 0070
Group: Segment Group 1 (Details of Transport) Mandatory
Level: 2
Usage: Conditional (Optional)
Max Use: 9
Purpose: A segment identifying a relevant reference number, such as: - shipping -
 syndicate - marketing organization - conference code.
**This segment is to be used in case the sender's voyage number is not the same
 as the vessel operator's voyage number (sent in TDT)**

Data Element Summary

User	Data	Component		
<u>Attribute</u>	<u>Element</u>	<u>Element</u>	<u>Name</u>	<u>Attributes</u>
M	C506		REFERENCE Identification of a reference.	M
M		1153	Reference qualifier Code giving specific meaning to a reference segment or a reference number. <i>VON Voyage Number</i>	M an..3
O		1154	Reference number <i>Alternative voyage number</i>	C an..35
X		1156	Line number Number of the line in the document/message referenced in 1154 Reference number.	C an..6
X		4000	Reference version number To uniquely identify a reference by its revision number.	C an..35

Segment: **LOC** Place/Location Identification
Position: 0080
Group: Segment Group 1 (Details of Transport) Mandatory
Level: 2
Usage: REQUIRED
Max Use: 9
Purpose: A segment to identify a location related to the means of transport, such as: -
 place of departure/arrival (terminal within the port)

Data Element Summary

User	Data	Component		
<u>Attribute</u>	<u>Element</u>	<u>Element</u>	<u>Name</u>	<u>Attributes</u>
M	3227		PLACE/LOCATION QUALIFIER Code identifying the function of a location. 9 Operational Port of Loading (COARRI Load) 11 Operational Port of Discharge (COARRI Discharge)	M an..3
R	C517		LOCATION IDENTIFICATION Identification of a location by code or name.	C
R		3225	Place/location identification Identification of the name of place/location, other than 3164 City name. <i>UN-Locode of ship's departure</i>	C an..25
O		1131	Code list qualifier Identification of a code list. 139 Port	C an..3
O		3055	Code list responsible agency, coded Code identifying the agency responsible for a code list. 6 UN	C an..3
X		3224	Place/location Name of place/location, other than 3164 City name.	C an..17
O	C519		RELATED LOCATION ONE IDENTIFICATION Identification the first related location by code or name.	C
R		3223	Related place/location one identification Specification of the first related place/location by code. <i>Terminal/berth</i>	C an..25
R		1131	Code list qualifier Identification of a code list. BER Berth TER Terminal	C an..3
R		3055	Code list responsible agency, coded Code identifying the agency responsible for a code list. ZZZ Mutually agreed	C an..3
X		3222	Related place/location one Specification of the first related place/location by name.	C an..70
X	C553		RELATED LOCATION TWO IDENTIFICATION Identification of second related location by code or name.	C
X		3233	Related place/location two identification	C an..25

X			Specification of a second related place/location by code.		
X	1131	Code list qualifier	Identification of a code list.	C	an..3
X	3055	Code list responsible agency, coded	Code identifying the agency responsible for a code list.	C	an..3
X	3232	Related place/location two	Specification of a second related place/location by name.	C	an..70
X	5479	RELATION, CODED	To specify the relationship between two or more items.	C	an..3

Segment: **DTM** Date/Time/Period
Position: 0090
Group: Segment Group 1 (Details of Transport) Mandatory
Level: 2
Usage: Conditional (Optional)
Max Use: 9
Purpose: A segment identifying a date/time related to the arrival or departure of the vessel, such as: - estimated date/time of arrival/departure

Data Element Summary

<u>Attribute</u>	<u>Data Element</u>	<u>Component Element</u>	<u>Name</u>	<u>Attributes</u>
M	C507		DATE/TIME/PERIOD Date and/or time, or period relevant to the specified date/time/period type.	M
M		2005	Date/time/period qualifier Code giving specific meaning to a date, time or period. <i>132 Arrival date/time, estimated</i> <i>133 Departure date/time, estimated</i>	M an..3
R		2380	Date/time/period The value of a date, a date and time, a time or of a period in a specified representation. <i>(Estimated) Date/time of arrival</i> <i>(Estimated) Date/time of departure</i>	C an..35
R		2379	Date/time/period format qualifier Specification of the representation of a date, a date and time or of a period. <i>203 CCYYMMDDHHMM</i>	C an..3

Group: **NAD** Segment Group 2: Name and Address
Position: 0100
Group:
Level: 1
Usage: Mandatory
Max Use: 9
Purpose: A group of segments to identify a party and related contacts.

Segment Summary

<u>User</u>	<u>Pos.</u>	<u>Seg.</u>		<u>Req.</u>	<u>Max.</u>	<u>Group:</u>
<u>Attribute</u>	<u>No.</u>	<u>ID</u>	<u>Name</u>	<u>Des.</u>	<u>Use</u>	<u>Repeat</u>
	0110	NAD	Name and Address	M	1	
	0120	CTA	Contact Information	C	9	

Segment: **NAD** Name and Address
Position: 0110 (Trigger Segment)
Group: Segment Group 2 (Name and Address) Mandatory
Level: 1
Usage: Mandatory
Max Use: 1
Purpose: A segment to identify the party's name, address, and function, and other addresses, such as: - message recipient - message sender - ordering customer - ordering customer agent

Data Element Summary

User	Data	Component		
<u>Attribute</u>	<u>Element</u>	<u>Element</u>	<u>Name</u>	<u>Attributes</u>
M	3035		PARTY QUALIFIER Code giving specific meaning to a party. <i>CA Carrier</i> <i>CF Container operator/lessee</i> <i>This code applies to every container mentioned in grp3 unless in segment NAD (grp3) specified otherwise.</i> <i>[SLS] Shipping line service</i>	M an..3
R	C082		PARTY IDENTIFICATION DETAILS Identification of a transaction party by code.	C
M		3039	Party id. identification Code identifying a party involved in a transaction. <i>Carrier, coded</i>	M an..35
R		1131	Code list qualifier Identification of a code list. <i>160 Party Id.</i>	C an..3
R		3055	Code list responsible agency, coded Code identifying the agency responsible for a code list. <i>20 BIC (Bureau International des Containeurs)</i> <i>166 US, National Motor Freight Classification Association/SCAC</i> <i>ZZZ Mutually agreed</i>	C an..3
X	C058		NAME AND ADDRESS Unstructured name and address: one to five lines.	C
X		3124	Name and address line Free form name and address description.	M an..35
X		3124	Name and address line Free form name and address description.	C an..35
X		3124	Name and address line Free form name and address description.	C an..35
X		3124	Name and address line Free form name and address description.	C an..35
X		3124	Name and address line Free form name and address description.	C an..35
X	C080		PARTY NAME	C

			Identification of a transaction party by name, one to five lines. Party name may be formatted.		
X		3036	Party name Name of a party involved in a transaction.	M	an..35
X		3036	Party name Name of a party involved in a transaction.	C	an..35
X		3036	Party name Name of a party involved in a transaction.	C	an..35
X		3036	Party name Name of a party involved in a transaction.	C	an..35
X		3036	Party name Name of a party involved in a transaction.	C	an..35
X		3045	Party name format, coded Specification of the representation of a party name.	C	an..3
X	C059		STREET Street address and/or PO Box number in a structured address: one to three lines.	C	
X		3042	Street and number/p.o. box Street and number in plain language, or Post Office Box No.	M	an..35
X		3042	Street and number/p.o. box Street and number in plain language, or Post Office Box No.	C	an..35
X		3042	Street and number/p.o. box Street and number in plain language, or Post Office Box No.	C	an..35
X	3164		CITY NAME Name of a city (a town, a village) for addressing purposes.	C	an..35
X	3229		COUNTRY SUB-ENTITY IDENTIFICATION Identification of the name of sub-entities (state, province) defined by appropriate governmental agencies.	C	an..9
X	3251		POSTCODE IDENTIFICATION Code defining postal zones or addresses.	C	an..9
X	3207		COUNTRY, CODED Identification of the name of a country or other geographical entity as specified in ISO 3166.	C	an..3

Segment: **CTA** **Contact Information**
Position: 0120
Group: Segment Group 2 (Name and Address) Mandatory
Level: 2
Usage: Conditional (NOT TO BE USED)
Max Use: 9
Purpose: A segment to identify a person or department of a message sender and/or message recipient, such as: - information contact

This segment is not to be used.

Data Element Summary

<u>User</u>	<u>Data</u>	<u>Component</u>	<u>Name</u>	<u>Attributes</u>
<u>Attribute</u>	<u>Element</u>	<u>Element</u>		
X	3139		CONTACT FUNCTION, CODED Code specifying the function of a contact (e.g. department or person).	C an..3
X	C056		DEPARTMENT OR EMPLOYEE DETAILS Code and/or name of a department or employee. Code preferred.	C
X		3413	Department or employee identification Internal identification code.	C an..17
X		3412	Department or employee The department or person within an organizational entity.	C an..35

Group: **EQD** Segment Group 3: Equipment Details
Position: 0130
Group:
Level: 1
Usage: Mandatory
Max Use: 9999
Purpose: A group of segments to specify containers or groups of containers (in case of guidelines) that are either to be loaded or to be discharged.

Segment Summary

<u>User</u>	<u>Pos.</u>	<u>Seg.</u>		<u>Req.</u>	<u>Max.</u>	<u>Group:</u>
<u>Attribute</u>	<u>No.</u>	<u>ID</u>	<u>Name</u>	<u>Des.</u>	<u>Use</u>	<u>Repeat</u>
	0140	EQD	Equipment Details	M		1
	0150	RFF	Reference	C		9
	0160	TMD	Transport Movement Details	C		9
	0170	DTM	Date/Time/Period	C		9
	0180	LOC	Place/Location Identification	C		9
	0190	MEA	Measurements	C		9
	0200	DIM	Dimensions	C		9
	0210	TMP	Temperature	C		9
	0220	RNG	Range Details	C		9
	0230	SEL	Seal Number	C		9
	0240	FTX	Free Text	C		9
	0250	DGS	Dangerous Goods	C		9
	0260	EQA	Attached Equipment	C		9
	0270	PIA	Additional Product Id	C		9
	0280		Segment Group 4: Damage	C		9
	0310		Segment Group 5: Details of Transport	C		1
	0350	NAD	Name and Address	C		1

Referring to the use of data elements 8053, 8260, 8155, 8154 (EQD), of RFF segment, of EQN segment, of FTX segment and of EQA segment two cases have to be taken into consideration:

1. Reporting one container or swapbody where prefix and serial number are known:

EQD 8053: qualifier 'CN' or 'SW'

EQD 8260: prefix and serial number

EQD 8155: ISO code

EQD 3055: '5' (ISO)

EQD 8154: Non-ISO code (no value in 3055)

FTX segment: commodity description (conditional)

EQA segment: only to be used for special equipment (e.g. reefer generator, trailer)

2. Reporting un-containerised cargo:

EQD 8053: qualifier 'BB'

EQD C237: not to be used

EQD C224: not to be used

FTX segment: uncon cargo description (mandatory)

EQA segment: to be used for supporting equipment (e.g. flatracks, platforms) with qualifier 'CN'

Segment: **EQD** Equipment Details
Position: 0140 (Trigger Segment)
Group: Segment Group 3 (Equipment Details) Mandatory
Level: 1
Usage: Mandatory
Max Use: 1
Purpose: A segment identifying a container, container size/type. The equipment status may be e.g. import, export, transshipment, shifter.

Data Element Summary

User	Data	Component		
<u>Attribute</u>	<u>Element</u>	<u>Element</u>	<u>Name</u>	<u>Attributes</u>
M	8053		EQUIPMENT QUALIFIER Code identifying type of equipment. <i>BB Break bulk</i> <i>CN Container</i> <i>SW Swap body</i>	M an..3
D	C237		EQUIPMENT IDENTIFICATION Marks (letters and/or numbers) identifying equipment used for transport such as a container.	C
D		8260	Equipment identification number Marks (letters and/or numbers) which identify equipment e.g. unit load device. 1. Container: container number (contiguous string) 2. Breakbulk: Leave blank 3. Otherwise (Ro/Ro, swapbody): the equipment ID number	C an..17
X		1131	Code list qualifier Identification of a code list.	C an..3
X		3055	Code list responsible agency, coded Code identifying the agency responsible for a code list.	C an..3
X		3207	Country, coded Identification of the name of a country or other geographical entity as specified in ISO 3166.	C an..3
D	C224		EQUIPMENT SIZE AND TYPE	C
D		8155	Equipment size and type identification Coded description of the size and type of equipment e.g. unit load device. ISO size type code according to ISO 6346.	C an..10
D		1131	Code list qualifier Identification of a code list. <i>102 Size and type</i>	C an..3
D		3055	Code list responsible agency, coded Code identifying the agency responsible for a code list. <i>5 ISO (International Organization for Standardization)</i>	C an..3
D		8154	Equipment size and type Plain language description of the size and type of equipment e.g. unit load device.	C an..35

O	8077	Equipment size/type (free text) EQUIPMENT SUPPLIER, CODED	C an..3
		To indicate the party that is the supplier of the equipment.	
		1 Shipper supplied	
		2 Carrier supplied	
		3 Third party supplied	
O	8249	EQUIPMENT STATUS, CODED	C an..3
		Indication of the action related to the equipment.	
		1 Continental	
		2 Export	
		3 Import	
		5 Shifter (Restow)	
		6 Transhipment	
		12 Shortlanded	
		13 Overlanded	
R	8169	FULL/EMPTY INDICATOR, CODED	C an..3
		To indicate the extent to which the equipment is full or empty.	
		4 Empty	
		5 Full, also used for break bulk	

N.B. C237 and C224 are required except in the case of break bulk.

N.B. The use of 8249 code '5' (Shifter/Restow) has to be agreed between partners.

Segment: **RFF** Reference
Position: 0150
Group: Segment Group 3 (Equipment Details) Mandatory
Level: 2
Usage: Conditional (Optional)
Max Use: 9
Purpose: A segment identifying a relevant reference number, such as: - container sequence number - upper equipment serial number of range - lower equipment serial number of range

Data Element Summary

User	Data Element	Component Element	Name	Attributes
M	C506		REFERENCE Identification of a reference.	M
M		1153	Reference qualifier Code giving specific meaning to a reference segment or a reference number. <i>AAY Carrier's agent reference number</i> <i>ABT Customs declaration number</i> <i>ANN Transport equipment announcement number</i> <i>BN Booking reference number</i> <i>CV Container operators reference number</i> To be used for DG reference number according to DG reference number in stowage instructions <i>EQ Alternate equipment number</i> To be used in the event that an alternative equipment number is to be quoted in addition to the number in the EQD <i>SQ Sequence number</i> To be used if more than one empty container of the same type was ordered <i>VGR Transport equipment gross mass verification reference number</i> Code as available from version D.15B: Identification reference to documentation of transport equipment gross mass (weight) verification	M an..3
R		1154	Reference number Identification number the nature and function of which can be qualified by an entry in data element 1153 Reference qualifier.	C an..35
X		1156	Line number Number of the line in the document/message referenced in 1154 Reference number.	C an..6
X		4000	Reference version number To uniquely identify a reference by its revision number.	C an..35

Segment: **TMD** Transport Movement Details
Position: 0160
Group: Segment Group 3 (Equipment Details) Mandatory
Level: 2
Usage: Conditional (Optional)
Max Use: 9
Purpose: A segment to indicate a Full Container Load (FCL) or a Less than Full Container Load (LCL).

Data Element Summary

User	Data	Component		
<u>Attribute</u>	<u>Element</u>	<u>Element</u>	<u>Name</u>	<u>Attributes</u>
R	C219		MOVEMENT TYPE Description of type of service for movement of cargo.	C
R		8335	Movement type, coded Code indicating the type of movement. 2 LCL/LCL = Pier/Pier = CFS/CFS 3 FCL/FCL = House/House = CY/CY 4 FCL/LCL = House/Pier = CY/CFS 5 LCL/FCL = Pier/House = CFS/CY	C an..3
X		8334	Movement type Description of the type of movement.	C an..35
X	8332		EQUIPMENT PLAN Description indicating equipment plan, e.g. FCL or LCL.	C an..26
X	8341		HAULAGE ARRANGEMENTS, CODED Specification of the type of equipment haulage arrangements.	C an..3

Segment: **DTM** Date/Time/Period
Position: 0170
Group: Segment Group 3 (Equipment Details) Mandatory
Level: 2
Usage: Conditional (Optional)
Max Use: 9
Purpose: A segment to identify a date/time related to the equipment, such as: - actual arrival/departure date/time - CSC expiration date (International Convention for Safe Containers)

Data Element Summary

<u>User</u>	<u>Data</u>	<u>Component</u>	<u>Name</u>	<u>Attributes</u>
<u>Attribute</u>	<u>Element</u>	<u>Element</u>		
M	C507		DATE/TIME/PERIOD Date and/or time, or period relevant to the specified date/time/period type. 203 Execution date 798 Verified gross mass determination date/time Code as available from version D.15B: Date/Time when a gross mass (weight) of a packed container was obtained for verification according to SOLAS chapter VI, regulation 2, paragraphs 4-6	M
M		2005	Date/time/period qualifier Code giving specific meaning to a date, time or period.	M an..3
O		2380	Date/time/period The value of a date, a date and time, a time or of a period in a specified representation.	C an..35
O		2379	Date/time/period format qualifier Specification of the representation of a date, a date and time or of a period. 203 CCYYMMDDHHMM	C an..3

Segment: **LOC** Place/Location Identification
Position: 0180
Group: Segment Group 3 (Equipment Details) Mandatory
Level: 2
Usage: REQUIRED
Max Use: 9
Purpose: A segment to identify a location or country related to the equipment, such as: - stowage cell - (final) place/port of discharge - transshipment place - place of delivery - country of origin/destination

Data Element Summary

User	Data	Component		Attributes
<u>Attribute</u>	<u>Element</u>	<u>Element</u>	<u>Name</u>	
M	3227		PLACE/LOCATION QUALIFIER Code identifying the function of a location.	M an..3
			9 Operational Port of Loading (COARRI Discharge – 98)	
			11 Operational Port of Discharge (COARRI Load – 270)	
			7 Place of Delivery (final destination)	
			PDS Place of destination (destination for stowage purposes)	
			147 Stowage cell	
R	C517		LOCATION IDENTIFICATION Identification of a location by code or name.	C
R		3225	Place/location identification Identification of the name of place/location, other than 3164 City name. - UN-Locode of ship's Port of Loading or Port of Discharge - The location of the cargo on the vessel. (147) Following formats are allowed: Bay/Row/Tier (BBRRTT): If baynumber is less than 3 characters the code must be filled up with leading zeroes, e.g. 0140682 Feeder format: Hatch/Tier/Row (HTR) Ro/Ro-format: Pad number	C an..25
O		1131	Code list qualifier Identification of a code list.	C an..3
			139 Port	
O		3055	Code list responsible agency, coded Code identifying the agency responsible for a code list.	C an..3
			6 UN	
			9 EAN	
			12 UIC	
			112 US Census	
			5 ISO format (in case of Stowage cell)	
			ZZZ Non-ISO format (bilaterally agreed)	
O		3224	Place/location Name of place/location, other than 3164 City name.	C an..17

R	C519	RELATED LOCATION ONE IDENTIFICATION	C	
		Identification the first related location by code or name.		
R		3223 Related place/location one identification	C	an..25
		Specification of the first related place/location by code.		
		<i>Terminal/berth</i>		
R		1131 Code list qualifier	C	an..3
		Identification of a code list.		
		<i>BER Berth</i>		
		<i>TER Terminal</i>		
R		3055 Code list responsible agency, coded	C	an..3
		Code identifying the agency responsible for a code list.		
		<i>ZZZ Mutually agreed</i>		
X		3222 Related place/location one	C	an..70
		Specification of the first related place/location by name.		
X	C553	RELATED LOCATION TWO IDENTIFICATION	C	
		Identification of second related location by code or name.		
X		3233 Related place/location two identification	C	an..25
		Specification of a second related place/location by code.		
X		1131 Code list qualifier	C	an..3
		Identification of a code list.		
X		3055 Code list responsible agency, coded	C	an..3
		Code identifying the agency responsible for a code list.		
X		3232 Related place/location two	C	an..70
		Specification of a second related place/location by name.		
X	5479	RELATION, CODED	C	an..3
		To specify the relationship between two or more items.		

Segment: **MEA** Measurements
Position: 0190
Group: Segment Group 3 (Equipment Details) Mandatory
Level: 2
Usage: REQUIRED
Max Use: 9
Purpose: A segment specifying a physical measurement related to the equipment, such as:
 - gross weight

Data Element Summary

User	Data	Component		
<u>Attribute</u>	<u>Element</u>	<u>Element</u>	<u>Name</u>	<u>Attributes</u>
M	6311		MEASUREMENT APPLICATION QUALIFIER Specification of the application of the physical measurement used. <i>AAE Measurement</i>	M an..3
R	C502		MEASUREMENT DETAILS Identification of measurement type.	C
R		6313	Measurement dimension, coded Specification of the type of dimension to be measured. <i>G Gross weight</i> <i>T Tare weight</i> <i>MW Maximum weight</i> To be used for CSC maximum gross weight container <i>VGM Transport equipment verified gross mass (weight)</i> Code as available from version D.15B: Transport equipment's gross mass (weight) verified according to SOLAS Chapter VI, Regulation 2, paragraphs 4-6	C an..3
X		6321	Measurement significance, coded Code specifying the significance of a measurement value.	C an..3
X		6155	Measurement attribute, coded Code used to specify non-discrete measurement values.	C an..3
X		6154	Measurement attribute To specify non-discrete measurement values.	C an..70
O	C174		VALUE/RANGE Measurement value and relevant minimum and maximum tolerances in that order.	C
M		6411	Measure unit qualifier Indication of the unit of measurement in which weight (mass), capacity, length, area, volume or other quantity is expressed. <i>KGM Kilograms</i>	M an..3
O		6314	Measurement value Value of the measured unit. Gross weight in kg (tare weight for empty containers). Gross weight is the sum of cargo weight and container (equipment) weight	C n..18
X		6162	Range minimum Minimum of a range.	C n..18

X	6152	Range maximum Maximum of a range.	C n..18
X	6432	Significant digits To specify the number of significant digits.	C n..2
X	7383	SURFACE/LAYER INDICATOR, CODED Code indicating the surface or layer of a product that is being described.	C an..3

Segment: **DIM** Dimensions
Position: 0200
Group: Segment Group 3 (Equipment Details) Mandatory
Level: 2
Usage: Conditional (Dependent)
Max Use: 9
Purpose: A segment specifying physical dimensions related to the equipment to be used for out-of-gage containers and for break bulk, such as: - gross dimensions
- off standard dimension general - off standard dimension left - off standard dimension right - off standard dimension back - off standard dimension front

Data Element Summary

<u>User</u>	<u>Data</u>	<u>Component</u>	<u>Attributes</u>
<u>Attribute</u>	<u>Element</u>	<u>Element</u>	<u>Name</u>
M	6145	DIMENSION QUALIFIER	M an..3
		To specify the dimensions applicable to each of the transportable units.	
		1 Gross dimensions	
		To be used for break bulk only	
		5 Off-standard dimension front	
		6 Off-standard dimension back	
		7 Off-standard dimension right	
		8 Off-standard dimension left	
		9 Off-standard dimension general (overheight)	
		10 External equipment dimension	
		To be used for non-ISO equipment only	
M	C211	DIMENSIONS	M
		Specification of the dimensions of a transportable unit.	
M	6411	Measure unit qualifier	M an..3
		Indication of the unit of measurement in which weight (mass), capacity, length, area, volume or other quantity is expressed.	
		CMT centimeter	
D	6168	Length dimension	C n..15
		Total length for break bulk Overlength for containers.	
D	6140	Width dimension	C n..15
		Total width for break bulk Overwidth for containers.	
D	6008	Height dimension	C n..15
		Total height for break bulk Overheight for containers.	

Segment: **TMP** Temperature
Position: 0210
Group: Segment Group 3 (Equipment Details) Mandatory
Level: 2
Usage: **DEPENDENT** (Dependent)
Max Use: 9
Purpose: A segment which identifies the transport temperature setting of the container.
 To be used for container/cargo which has to be cooled or heated

Data Element Summary

User	Data	Component		
<u>Attribute</u>	<u>Element</u>	<u>Element</u>	<u>Name</u>	<u>Attributes</u>
M	6245		TEMPERATURE QUALIFIER A code giving specific meaning to the temperature. 2 Transport temperature	M an..3
R	C239		TEMPERATURE SETTING Temperature according to which the cargo has to be transported.	C
R		6246	Temperature setting The actual temperature value in degrees Celsius (e.g. 008, 020).	C n3
R		6411	Measure unit qualifier Indication of the unit of measurement in which weight (mass), capacity, length, area, volume or other quantity is expressed. <i>CEL Celsius</i> <i>FAH Fahrenheit</i>	C an..3

N.B. In spite of the given field length of element e6245 (format N3) decimal marks and negative values preceded by a minus sign can be transmitted. Generally numeric data element values shall be regarded as positive unless they are preceded by a minus sign. Decimal mark and minus sign shall, however, not be counted as a character of the value when computing the maximum field length.

Tenth degrees have to be separated by a decimal point from full degrees (e.g. 18.5). Temperatures below zero have to be preceded by a minus sign (e.g. -18.5). The same applies for elements e6152 and e6162 in the RNG segment.

For further explanation please refer to ISO 9735 'EDIFACT Application Level Syntax Rules', par. 10 'Representation of numeric data element values'.

Segment: **RNG** Range Details
Position: 0220
Group: Segment Group 3 (Equipment Details) Mandatory
Level: 2
Usage: Conditional (Dependent)
Max Use: 9
Purpose: A segment to specify the transport temperature range setting of the container. To be used for container/cargo which has to be cooled or hea-ted and a temperature range is allowed

Data Element Summary

<u>User</u>	<u>Data</u>	<u>Component</u>	<u>Name</u>	<u>Attributes</u>
<u>Attribute</u>	<u>Element</u>	<u>Element</u>		
M	6167		RANGE TYPE QUALIFIER Identification of the type of range. <i>5 Temperature range</i>	M an..3
R	C280		RANGE Range minimum and maximum limits.	C
M		6411	Measure unit qualifier Indication of the unit of measurement in which weight (mass), capacity, length, area, volume or other quantity is expressed. <i>CEL Celsius</i> <i>FAH Fahrenheit</i>	M an..3
R		6162	Range minimum Minimum of a range. Minimum temperature according to which the cargo has been transported	C n..18
R		6152	Range maximum Maximum of a range. Maximum temperature according to which the cargo has been transported	C n..18

Segment: **SEL** Seal Number
Position: 0230
Group: Segment Group 3 (Equipment Details) Mandatory
Level: 2
Usage: Conditional (Optional)
Max Use: 9
Purpose: A segment identifying a seal number related to the equipment.

Data Element Summary

User	Data	Component		
<u>Attribute</u>	<u>Element</u>	<u>Element</u>	<u>Name</u>	<u>Attributes</u>
M	9308		SEAL NUMBER The number of a custom seal or another seal affixed to the containers or other transport unit.	M an..10
O	C215		SEAL ISSUER Identification of the issuer of a seal on equipment either by code or by name.	C
R		9303	Sealing party, coded Identification of the issuer of the seal number. <i>CA Carrier</i> <i>CU Customs</i> <i>QA Quarantine</i> <i>SH Shipper</i> <i>TO Terminal operator</i>	C an..3
X		1131	Code list qualifier Identification of a code list.	C an..3
X		3055	Code list responsible agency, coded Code identifying the agency responsible for a code list.	C an..3
X		9302	Sealing party Clear text, representing the name of the issuer of the seal number.	C an..35
X	4517		SEAL CONDITION, CODED To indicate the condition of a seal. <i>1 In right condition</i> <i>2 Damaged</i>	C an..3

Segment: **FTX** Free Text
Position: 0240
Group: Segment Group 3 (Equipment Details) Mandatory
Level: 2
Usage: Conditional (Optional)
Max Use: 9
Purpose: A segment to specify supplementary information related to the equipment, such as: -
 blockade reason - government inspection service - container loading remarks -
 container remarks - container order information - additional remarks concerning the
 container - container safety convention plate - continuous examination program
 (ACEP)
See Recommendation JM4/272 and Document: JM4/ITIGG/120/v.17

Data Element Summary

User	Data	Component		
<u>Attribute</u>	<u>Element</u>	<u>Element</u>	<u>Name</u>	<u>Attributes</u>
M	4451		TEXT SUBJECT QUALIFIER Code specifying subject of a free text. AAA Goods description AAI General information ABS Additional conditions ACF Additional attribute information DAR Damage remarks HAN Handling instructions	M an..3
X	4453		TEXT FUNCTION, CODED Code specifying how to handle the text.	C an..3
D	C107		TEXT REFERENCE Coded reference to a standard text and its source.	C
M		4441	Free text, coded Free text in coded form.	M an..3
			If 4451='ACF': construction material code	
			If 4451='ABS': codes	
			61 Unpacking (LCL delivery)	
			62 Positioning by third party	
			63 To be inspected	
			64 Requires special service	
			65 Requires pre-trip	
			66 Requires steam clean	
			67 Clean	
			68 Dirty	
			69 For unpacking	
			70 Under bond	
			71 Free store	
			72 Customs stop	
			73 Customs stop removed	
			74 Quarantine stop	
			75 Quarantine stop removed	
			76 Storage/other stop	

77	Storage/other stop removed
78	All stops removed
79	Set aside for sale
80	Sold and awaiting delivery
81	Prepared for hides
82	Prepared for food quality
83	Prepared bulkhead
84	Prepared for quarantine inspection
85	Pretrip/steamcleaned int reefer
86	Pretripped integral reefer
87	Steamcleaned insulated
88	Steamcleaned general
89	Steamcleaned tank
90	Surveyed
91	Repaired
92	Plated
93	Prepared for milk powder
94	Prepared for rice
95	Prepared for cotton
96	Prepared for cans
97	Prepared for canned fruit
98	Prepared for dried fruit
99	Prepared for hay
100	Prepared with plastic lining
101	Prepared with varnished floor
102	Clip-on unit required
103	Generator required
104	Vent open
105	Vent closed
106	Off-hire on arrival
107	Do not accept
109	Cargo claim pending
110	Return to special port
111	CSC problem
112	Redirect elsewhere
113	Ownership problem
114	Unit is for sale
115	For fumigation
116	Keep from freezing
117	No temperature setting required
118	Live reefer
SM1	SOLAS Method 1 – Verified Gross Mass - weighed
SM2	SOLAS Method 2 – Verified Gross Mass - calculated

Codes present conform previous manual 1.2 ITIG12!

For more complete list check document: JM4/ITIGG/120/v.17

If 4451= DAR : codes

1	Available
2	Minor damage
3	Medium damage
4	Major damage
5	Awaiting inspection
6	Not damaged

7	Repaired
8	Damaged
9	Unknown
10	Not available

If 4451='HAN': codes

AB	Away from boiler
AF	Away from foodstuff
AL	Away from living quarters
BC	Block stowage
EO	Except on decktop
KC	Keep cool
NO	No overstay
OD	On deck stowage
OP	On deck protected
OT	On decktop
TS	Top stowage
UD	Under deck stowage
UT	Under deck top stowage
UW	Under waterline
RF	Equipment off-repair
RN	Equipment on-repair
SP	Equipment put aside for inspection
SQ	Equipment stuff on quay
UQ	Equipment unstuff on quay
TF	Equipment transfer from shipping line
TT	Equipment transfer to shipping line
IN	Equipment receipt
IO	Equipment left and received
CVE	Set clear for verification
CAP	Set clear for appraisal
CFU	Set clear for fumigation
CSP	Set clear for inspection
COR	Set clear for other reasons
BRS	Block order - reserved for specific order
BSO	Block order - shipper owned container
BSU	Block order - unit sold
BNC	Block order - no use for commercial announcement
RCT	Reefer order - to connect to terminal electric means and control temperature
RCD	Reefer order - to connect to diesel group and control temperature
RCO	Reefer order - to connect to clip on and control temperature
RPT	Reefer order - pre-trip inspection
RTA	Reefer order - to tank a reefer container
LLO	Load
LDI	Discharge
LBU	To be bundled
LGO	General order
LLA	Lash
LME	To be measured
LSH	Shift on the same means of transport
LST	Stick
LWE	To be weighed

CCN	Customs clearance not to be arranged
CCY	Customs clearance to be arranged
CON	Not containerised goods
COY	Containerised goods
DIR	Discharge directly from one means of transport to another
FC	Goods to be cooled or frozen during operation
ISH	Discharge from means of transport into a shed
LCK	Discharge from means of transport into a locker
MPN	Goods are not a marine pollutant under MARPOL
MPY	Goods are a marine pollutant under MARPOL
NC	Goods are not to be cooled or frozen during operation
ODN	Goods will not exceed dimensions of the equipment
ODY	Goods will exceed dimensions of the equipment
OQU	Discharge from means of transport onto quay
R	Restow on same means of transport
T	In transit (remain on board)
RD	Refuel diesel reefer unit
RG	Refuel gas reefer unit
1	Equipment to be sealed
2	Equipment to be dry and clean
3	Equipment to be odourless
4	Equipment to be pre-tripped
5	Equipment to be fumigated
50	Contents to be sampled on acceptance
51	Connect to reefer bridge immediately
52	Roll tarpaulins
53	Vents to be open
6	Endwalls of flatracks to be collapsed
7	Bundled flatracks to be cut
AFH	Under deck, away from heat
ALU	Limited maximum stacking height
BOT	Load at bottom of hold
C	Put aside for cleaning
COV	To be covered
CSC	Put aside for examination of CSC plate
DEU	Cargo packages are to be undone
DRY	Do not connect to reefer/porthole bridge
HTK	Load with connection to heated tanks
INB	Under deck, or on deck to be built in
KFF	Load in frost-free cell position
LPN	Loading not permitted
LPY	Loading permitted
PRE	Put near reefer bridge and pre-trip equipment
RC	Put aside for repair and cleaning
REC	Packages are to be re-composed/re-bundled
RFR	Reefer under deck
SAM	Put aside for sampling
SHN	Ship does not need to be loaded/discharged
SHY	Ship needs to be loaded/discharged
SPC	Specified cell position
SRT	To be sorted out
TAR	Put aside to roll tarpaulins before loading
TOP	Load on top layer in hold

*Codes present conform previous manual 1.2 ITIG12!
For more complete list check document: JM4/ITIGG/120/v.17*

X		1131	Code list qualifier	C	an..3
			Identification of a code list.		
D		3055	Code list responsible agency, coded	C	an..3
			Code identifying the agency responsible for a code list.		
		5	<i>ISO (International Organization for Standardization)</i> If e4451 = ACF		
		184	<i>ACOS (Australian chamber of shipping)</i> If e4451 = DAR, ABS or HAN		
		SMD	<i>SMDG (Shipplaning message design group)</i> If e4451 = ABS (SOLAS VGM)		
D	C108		TEXT LITERAL	C	
			Free text; one to five lines.		
M		4440	Free text	M	an..70
			Free text: Description/Instructions/Remarks in plain language.. To be used only if 4451='AAA' or 'AAI'		
X		4440	Free text	C	an..70
			Free text field available to the message sender for information.		
X		4440	Free text	C	an..70
			Free text field available to the message sender for information.		
X		4440	Free text	C	an..70
			Free text field available to the message sender for information.		
X		3453	LANGUAGE, CODED	C	an..3
			Code of language (ISO 639-1988).		

N.B. This segment is not generally machine processable. Use of this segment must be agreed between partners!

Segment: **DGS** Dangerous Goods
Position: 0250
Group: Segment Group 3 (Equipment Details) Mandatory
Level: 2
Usage: Conditional (**DEPENDENT**)
Max Use: 9
Purpose: A segment to identify the UN-number and the class of the dangerous goods loaded in the container.

Data Element Summary

User	Data	Component		
<u>Attribute</u>	<u>Element</u>	<u>Element</u>	<u>Name</u>	<u>Attributes</u>
R	8273		DANGEROUS GOODS REGULATIONS, CODED Code indicating the regulation, international or national, applicable for a means of transport. <i>IMD IMO IMDG code</i>	C an..3
R	C205		HAZARD CODE The identification of the dangerous goods in code.	C
M		8351	Hazard code identification Dangerous goods code. <i>IMDG code, e.g. '6.1'</i>	M an..7
O		8078	Hazard substance/item/page number Number giving additional hazard code classification of a goods item within the applicable dangerous goods regulation. <i>IMDG code page number (english version)</i>	C an..7
O		8092	Hazard code version number The version/revision number of date of issuance of the code used.	C an..10
O	C234		UNDG INFORMATION Information on United Nations Dangerous Goods classification.	C
R		7124	UNDG number Unique 4-digit serial number assigned within the United Nations to substances and articles contained in a list of the dangerous goods most commonly carried.	C n4
X		7088	Dangerous goods flashpoint Lowest temperature, in the case of dangerous goods, at which vapour from an inflammable liquid forms an ignitable mixture with air.	C an..8
D	C223		DANGEROUS GOODS SHIPMENT FLASHPOINT Temperature at which a vapor according to ISO 1523/73 can be ignited.	C
R		7106	Shipment flashpoint Temperature in centigrade determined by the closed cup test as per ISO 1523/73 where a vapour is given off that can be ignited. <i>The actual flashpoint in Celcius or Fahrenheit. For transmitting temperatures below zero or tenth degrees refer to remarks under TMP segment. If different dangerous goods with different flashpoints within one container are to be transported only the lowest flashpoint is to be given.</i>	C n3
R		6411	Measure unit qualifier	C an..3

		Indication of the unit of measurement in which weight (mass), capacity, length, area, volume or other quantity is expressed.	
		<i>CEL</i> <i>Celsius</i>	
		<i>FAH</i> <i>Fahrenheit</i>	
O	8339	PACKING GROUP, CODED	C an..3
		Identification of a packing group by code.	
		1 <i>Great danger</i> Packing Group I	
		2 <i>Medium danger</i> Packing Group II	
		3 <i>Minor danger</i> Packing Group III	
O	8364	EMS NUMBER	C an..6
		Emergency procedures for ships carrying dangerous goods.	
O	8410	MFAG	C an..4
		Medical first aid guide.	
O	8126	TREM CARD NUMBER	C an..10
		The identification of a transport emergency card giving advice for emergency actions.	
O	C235	HAZARD IDENTIFICATION	C
		Identification of the Orange placard required on the means of transport.	
O	8158	Hazard identification number, upper part	C an..4
		The id. number for the Orange Placard (upper part) required on the means of transport.	
O	8186	Substance identification number, lower part	C an4
		The number for the Orange Placard (lower part) required on the means of transport.	
O	C236	DANGEROUS GOODS LABEL	C
		Markings identifying the type of hazardous goods and similar information.	
O	8246	Dangerous goods label marking	C an..4
		Marking identifying the type of hazardous goods (substance), Loading/Unloading instructions and advising actions in case of emergency.	
O	8246	Dangerous goods label marking	C an..4
		Marking identifying the type of hazardous goods (substance), Loading/Unloading instructions and advising actions in case of emergency.	
O	8246	Dangerous goods label marking	C an..4
		Marking identifying the type of hazardous goods (substance), Loading/Unloading instructions and advising actions in case of emergency.	
X	8255	PACKING INSTRUCTION, CODED	C an..3
		Code defining the quantity and the type of package in which a product is allowed to be shipped in a passenger or freight aircraft.	
X	8325	CATEGORY OF MEANS OF TRANSPORT, CODED	C an..3
		Identification of the type of means of transport determined to carry particular goods, not necessarily being hazardous.	
X	8211	PERMISSION FOR TRANSPORT, CODED	C an..3
		Code giving evidence that transportation of particular hazardous cargo is permitted and identifies the restrictions being put upon a particular	

transport.

- N.B. For goods with a subsidiary risk 2 methods ar to be applied:
1. In DGS only elements 8273 and 8351 are to be used.
 2. Subsidiary risk should be shown in segment FTX.

Segment: **EQA** Attached Equipment
Position: 0260
Group: Segment Group 3 (Equipment Details) Mandatory
Level: 2
Usage: Conditional (Optional)
Max Use: 9
Purpose: A segment to identify clip-on units, such as: - generator sets.
 To be used if attached equipment is used

Data Element Summary

<u>User</u>	<u>Data</u>	<u>Component</u>	<u>Name</u>	<u>Attributes</u>
M	8053		EQUIPMENT QUALIFIER Code identifying type of equipment.	M an..3
			AB Chain	
			AD Temperature recorder	
			BL Blocks	
			BR Barge	
			CH Chassis	
			CN Container	
			FSU Forked support	
			LAR Lashing rope	
			RG Reefer generator	
			RR Rail car	
			STR Strap	
			SW Swapbody	
			TE Trailer	
			TP Tarpaulin	
D	C237		EQUIPMENT IDENTIFICATION Marks (letters and/or numbers) identifying equipment used for transport such as a container.	C
R		8260	Equipment identification number Marks (letters and/or numbers) which identify equipment e.g. unit load device, number of attached equipment.	C an..17
X		1131	Code list qualifier Identification of a code list.	C an..3
X		3055	Code list responsible agency, coded Code identifying the agency responsible for a code list.	C an..3
X		3207	Country, coded Identification of the name of a country or other geographical entity as specified in ISO 3166.	C an..3

Segment: **PIA** Additional Product Id
Position: 0270
Group: Segment Group 3 (Equipment Details) Mandatory
Level: 2
Usage: Conditional (**NOT TO BE USED**)
Max Use: 9
Purpose: A segment to specify a commodity code relating to goods in the container.

Segment not to be used

Data Element Summary

<u>User</u>	<u>Data</u>	<u>Component</u>	<u>Name</u>	<u>Attributes</u>
<u>Attribute</u>	<u>Element</u>	<u>Element</u>		
X	4347		PRODUCT ID. FUNCTION QUALIFIER Indication of the function of the product code. Refer to D.95B Data Element Dictionary for acceptable code values.	M an..3
X	C212		ITEM NUMBER IDENTIFICATION Goods identification for a specified source.	M
X		7140	Item number A number allocated to a group or item.	C an..35
X		7143	Item number type, coded Identification of the type of item number. Refer to D.95B Data Element Dictionary for acceptable code values.	C an..3
X		1131	Code list qualifier Identification of a code list. Refer to D.95B Data Element Dictionary for acceptable code values.	C an..3
X		3055	Code list responsible agency, coded Code identifying the agency responsible for a code list. Refer to D.95B Data Element Dictionary for acceptable code values.	C an..3
X	C212		ITEM NUMBER IDENTIFICATION Goods identification for a specified source.	C
X		7140	Item number A number allocated to a group or item.	C an..35
X		7143	Item number type, coded Identification of the type of item number. Refer to D.95B Data Element Dictionary for acceptable code values.	C an..3
X		1131	Code list qualifier Identification of a code list. Refer to D.95B Data Element Dictionary for acceptable code values.	C an..3
X		3055	Code list responsible agency, coded Code identifying the agency responsible for a code list. Refer to D.95B Data Element Dictionary for acceptable code values.	C an..3
X	C212		ITEM NUMBER IDENTIFICATION Goods identification for a specified source.	C
X		7140	Item number A number allocated to a group or item.	C an..35
X		7143	Item number type, coded	C an..3

			Identification of the type of item number. Refer to D.95B Data Element Dictionary for acceptable code values.	
X		1131	Code list qualifier	C an..3
			Identification of a code list. Refer to D.95B Data Element Dictionary for acceptable code values.	
X		3055	Code list responsible agency, coded	C an..3
			Code identifying the agency responsible for a code list. Refer to D.95B Data Element Dictionary for acceptable code values.	
X	C212		ITEM NUMBER IDENTIFICATION	C
			Goods identification for a specified source.	
X		7140	Item number	C an..35
			A number allocated to a group or item.	
X		7143	Item number type, coded	C an..3
			Identification of the type of item number. Refer to D.95B Data Element Dictionary for acceptable code values.	
X		1131	Code list qualifier	C an..3
			Identification of a code list. Refer to D.95B Data Element Dictionary for acceptable code values.	
X		3055	Code list responsible agency, coded	C an..3
			Code identifying the agency responsible for a code list. Refer to D.95B Data Element Dictionary for acceptable code values.	
X	C212		ITEM NUMBER IDENTIFICATION	C
			Goods identification for a specified source.	
X		7140	Item number	C an..35
			A number allocated to a group or item.	
X		7143	Item number type, coded	C an..3
			Identification of the type of item number. Refer to D.95B Data Element Dictionary for acceptable code values.	
X		1131	Code list qualifier	C an..3
			Identification of a code list. Refer to D.95B Data Element Dictionary for acceptable code values.	
X		3055	Code list responsible agency, coded	C an..3
			Code identifying the agency responsible for a code list. Refer to D.95B Data Element Dictionary for acceptable code values.	

Group: **DAM** Segment Group 4: Damage
Position: 0280
Group: Segment Group 3 (Equipment Details) Mandatory
Level: 2
Usage: Conditional (Optional)
Max Use: 9
Purpose: A group of segments to specify damage details related to the equipment.

Segment Summary

<u>User</u>	<u>Pos.</u>	<u>Seg.</u>		<u>Req.</u>	<u>Max.</u>	<u>Group:</u>
<u>Attribute</u>	<u>No.</u>	<u>ID</u>	<u>Name</u>	<u>Des.</u>	<u>Use</u>	<u>Repeat</u>
	0290	DAM	Damage	M		1
	0300	COD	Component Details	C		1

Segment: **DAM** Damage
Position: 0290 (Trigger Segment)
Group: Segment Group 11 (Damage) Conditional (Optional)
Level: 2
Usage: Mandatory
Max Use: 1
Purpose: A segment to specify equipment damages, such as the point of the damage on the equipment, and the type of damage.
The damage group must be transmitted whenever there is damage to the equipment. This group is related to the damage remarks (qual.'DAR') in FTX grp3.

Data Element Summary

	<u>Data Element</u>	<u>Component Element</u>	<u>Name</u>	<u>Attributes</u>
M	7493		DAMAGE DETAILS CODE QUALIFIER <i>1 Equipment damage</i>	M 1 an..3
O	C821		TYPE OF DAMAGE	C 1
R		7501	Damage type description code <i>Code as per ISO 9897, Annex D</i>	C an..3
X		1131	Code list identification code	C an..17
X		3055	Code list responsible agency code	C an..3
O		7500	Damage type description <i>Type of damage (free text)</i>	C an..35
O	C822		DAMAGE AREA	C 1
R		7503	Damage area description code <i>Code as per ISO 9897, Annex C</i>	C an..4
X		1131	Code list identification code	C an..17
X		3055	Code list responsible agency code	C an..3
O		7502	Damage area description <i>Damage area (free text)</i>	C an..35
X	C825		DAMAGE SEVERITY	C 1
X		7509	Damage severity description code	C an..3
X		1131	Code list identification code	C an..17
X		3055	Code list responsible agency code	C an..3
X		7508	Damage severity description	C an..35
X	C826		ACTION	C 1
X		1229	Action request/notification description code	C an..3
X		1131	Code list identification code	C an..17
X		3055	Code list responsible agency code	C an..3
X		1228	Action request/notification description	C an..35

Segment: **COD** **Component Details**
Position: 0300
Group: Segment Group 11 (Damage) Conditional (Optional)
Level: 3
Usage: Conditional (**NOT TO BE USED**)
Max Use: 1
Purpose: A segment to specify component details of the damaged equipment.

This segment is not to be used

Data Element Summary

	<u>Data Element</u>	<u>Component Element</u>	<u>Name</u>	<u>Attributes</u>
X	C823		TYPE OF UNIT/COMPONENT	C 1
X		7505	Unit or component type description code <i>Code as per ISO 9897, Annex K & L</i>	C an..3
X		1131	Code list identification code	C an..17
X		3055	Code list responsible agency code	C an..3
X		7504	Unit or component type description <i>Type of unit/component (free text)</i>	C an..35
X	C824		COMPONENT MATERIAL	C 1
X		7507	Component material description code <i>Code as per ISO 9897, Annex E</i>	C an..3
X		1131	Code list identification code	C an..17
X		3055	Code list responsible agency code	C an..3
X		7506	Component material description <i>Component material (free text)</i>	C an..35

Group: **TDT** Segment Group 4: Details of Transport
Position: 0310
Group: Segment Group 3 (Equipment Details) Mandatory
Level: 2
Usage: Conditional (Optional)
Max Use: 1
Purpose: A group of segments to specify the planned on-carriage details in case this message is a discharge order message.

Segment Summary

<u>User</u>	<u>Pos.</u>	<u>Seg.</u>		<u>Req.</u>	<u>Max.</u>	<u>Group:</u>
<u>Attribute</u>	<u>No.</u>	<u>ID</u>	<u>Name</u>	<u>Des.</u>	<u>Use</u>	<u>Repeat</u>
	0320	TDT	Details of Transport	M		1
	0330	LOC	Place/Location Identification	C		9
	0340	DTM	Date/Time/Period	C		9

Segment: **TDT** Details of Transport
Position: 0320 (Trigger Segment)
Group: Segment Group 4 (Details of Transport) Conditional (Optional)
Level: 2
Usage: Mandatory
Max Use: 1
Purpose: A segment identifying the on-carriage transport details of the mode, means of transport by which the container will depart after being discharged.

Data Element Summary

User	Data	Component		
<u>Attribute</u>	<u>Element</u>	<u>Element</u>	<u>Name</u>	<u>Attributes</u>
M	8051		TRANSPORT STAGE QUALIFIER Qualifier giving a specific meaning to the transport details. 10 Pre-carriage transport (if COARRI – Load) 30 On-carriage transport (if COARRI – Discharge)	M an..3
D	8028		CONVEYANCE REFERENCE NUMBER Unique reference given by the carrier to a certain journey or departure of a means of transport (generic term). <i>The vessel operator's discharge voyage number if mode of pre-carriage or on-carriage transport is a ship</i>	C an..17
R	C220		MODE OF TRANSPORT Method of transport code or name. Code preferred.	C
R		8067	Mode of transport, coded Coded method of transport used for the carriage of the goods. 1 Maritime transport (ocean) 2 Rail 3 Road 4 Air 8 Inland Water 9 Mode unknown	C an..3
X		8066	Mode of transport Method of transport used for the carriage of the goods.	C an..17
R	C228		TRANSPORT MEANS Code and/or name identifying the type of means of transport.	C
R		8179	Type of means of transport identification Code defining the type of the means of transport being utilized. 11 Ship (feeder vessel/barge) 13 Ocean vessel 25 Rail 31 Truck	C an..8
X		8178	Type of means of transport Description of the type of the means of transport being utilized.	C an..17
O	C040		CARRIER Identification of a carrier by code and/or by name. Code preferred.	C
D		3127	Carrier identification Identification of party undertaking or arranging transport of goods between named points.	C an..17

		Code of the carrier.		
D	1131	Code list qualifier	C	an..3
		Identification of a code list.		
		172 Carrier code		
D	3055	Code list responsible agency, coded	C	an..3
		Code identifying the agency responsible for a code list.		
		20 BIC (Bureau International des Containeurs)		
		87 Assigned by carrier		
		166 US, National Motor Freight Classification Association/SCAC		
D	3128	Carrier name	C	an..35
		Name of party undertaking or arranging transport of goods between named points.		
		This element only to be transmitted if no carrier code available		
X	8101	TRANSIT DIRECTION, CODED	C	an..3
		Identification of the point of origin and point of direction.		
X	C401	EXCESS TRANSPORTATION INFORMATION	C	
X	8457	Excess transportation reason, coded	M	an..3
X	8459	Excess transportation responsibility, coded	M	an..3
X	7130	Customer authorization number	C	an..17
D	C222	TRANSPORT IDENTIFICATION	C	
		Code and/or name identifying the means of transport.		
		This element group to be transmitted if a code of the means of pre-carriage or on-carriage is applicable		
R	8213	Id. of means of transport identification	C	an..9
		Identification of the means of transport by name or number.		
		Radio Call sign (if e8067 = 1 and C222/e1131 = 103)		
		Lloyd's Number (if e8067 = 1 and C222/e1131 =146)		
		Train ID (if e8067 = 2)		
		Truck ID (if e8067 = 3)		
		Air service ID (if e8067 = 4)		
		Barge ID (if e8067 = 8)		
D	1131	Code list qualifier	C	an..3
		Identification of a code list.		
		103 Radio Call sign directory		
		146 Lloyd's register of ships		
X	3055	Code list responsible agency, coded	C	an..3
		Code identifying the agency responsible for a code list.		
O	8212	Id. of the means of transport	C	an..35
		Identification of the means of transport by name or number.		
		Name of the vessel		
X	8453	Nationality of means of transport, coded	C	an..3
		Coded name of the country in which a means of transport is registered.		
X	8281	TRANSPORT OWNERSHIP, CODED	C	an..3

Segment: **LOC** Place/Location Identification
Position: 0330
Group: Segment Group 4 (Details of Transport) Conditional (Optional)
Level: 3
Usage: Conditional (Optional)
Max Use: 9
Purpose: A segment identifying locations related to the transport details, such as: - place of departure

Data Element Summary

User	Data	Component			Attributes
<u>Attribute</u>	<u>Element</u>	<u>Element</u>	<u>Name</u>		
M	3227		PLACE/LOCATION QUALIFIER		M an..3
			Code identifying the function of a location.		
			5	Place of departure (pre-carriage - BGM+270 – Load))	
			7	Place of delivery (on- carriage - BGM+98 - Discharge)	
			PDS	Place of destination (for stowage purposes) (BGM+98)	
R	C517		LOCATION IDENTIFICATION		C
			Identification of a location by code or name.		
R		3225	Place/location identification		C an..25
			Identification of the name of place/location, other than 3164 City name.		
			UN-Locode of ship's departure		
X		1131	Code list qualifier		C an..3
			Identification of a code list.		
O		3055	Code list responsible agency, coded		C an..3
			Code identifying the agency responsible for a code list.		
			6	UN	
			9	EAN	
			112	US Census	
X		3224	Place/location		C an..17
			Name of place/location, other than 3164 City name.		
X	C519		RELATED LOCATION ONE IDENTIFICATION		C
			Identification the first related location by code or name.		
X		3223	Related place/location one identification		C an..25
			Specification of the first related place/location by code.		
X		1131	Code list qualifier		C an..3
			Identification of a code list.		
X		3055	Code list responsible agency, coded		C an..3
			Code identifying the agency responsible for a code list.		
X		3222	Related place/location one		C an..70
			Specification of the first related place/location by name.		
X	C553		RELATED LOCATION TWO IDENTIFICATION		C
			Identification of second related location by code or name.		
X		3233	Related place/location two identification		C an..25
			Specification of a second related place/location by code.		
X		1131	Code list qualifier		C an..3

X			Identification of a code list.		
X		3055	Code list responsible agency, coded	C	an..3
			Code identifying the agency responsible for a code list.		
X		3232	Related place/location two	C	an..70
			Specification of a second related place/location by name.		
X	5479		RELATION, CODED	C	an..3
			To specify the relationship between two or more items.		

Segment: **DTM** Date/Time/Period
Position: 0340
Group: Segment Group 4 (Details of Transport) Conditional (Optional)
Level: 3
Usage: Conditional (Optional)
Max Use: 9
Purpose: A segment to specify a date/time relating to the pre- or on-carriage transport, such as arrival or departure date/time.

Data Element Summary

User	Data	Component		
<u>Attribute</u>	<u>Element</u>	<u>Element</u>	<u>Name</u>	<u>Attributes</u>
M	C507		DATE/TIME/PERIOD Date and/or time, or period relevant to the specified date/time/period type.	M
M		2005	Date/time/period qualifier Code giving specific meaning to a date, time or period. <i>132 Arrival date/time, estimated</i> <i>133 Departure date/time, estimated</i>	M an..3
R		2380	Date/time/period The value of a date, a date and time, a time or of a period in a specified representation. <i>(Estimated) Date/time of arrival</i> <i>(Estimated) Date/time of departure</i>	C an..35
R		2379	Date/time/period format qualifier Specification of the representation of a date, a date and time or of a period. <i>203 CCYYMMDDHHMM</i>	C an..3

Segment: **NAD** **Name and Address**
Position: 0350
Group: Segment Group 3 (Equipment Details) Mandatory
Level: 2
Usage: Conditional (DEPENDENT)
Max Use: 1
*Remark: segment occurrence can be modified to 9 on a bilateral basis to be agreed between partners if necessary to pass both CF and AM/SPC**
Purpose: A segment to specify a related address or party, such as: - container operator if container operator differs from operator or shipping line service mentioned in NAD grp2

Data Element Summary

User	Data	Component		
<u>Attribute</u>	<u>Element</u>	<u>Element</u>	<u>Name</u>	<u>Attributes</u>
M	3035		PARTY QUALIFIER Code giving specific meaning to a party. <i>CF</i> Container operator/lessee <i>AM *</i> Authorized official – (VGM EDI signature) Name in capitals of Authorized person signing for verified gross mass (weight) = EDI signature <i>SPC *</i> SOLAS packed container VGM responsible party Code as available from version D.15B: Party responsible for declaration of a packed container's verified gross mass (weight) according to SOLAS Chapter VI, Regulation 2, paragraphs 4-6	M an..3
R	C082		PARTY IDENTIFICATION DETAILS Identification of a transaction party by code.	C
M		3039	Party id. identification Code identifying a party involved in a transaction. Carrier, coded	M an..35
R		1131	Code list qualifier Identification of a code list. <i>160</i> Party Id.	C an..3
R		3055	Code list responsible agency, coded Code identifying the agency responsible for a code list. <i>20</i> BIC (Bureau International des Containeurs) <i>166</i> US, National Motor Freight Classification Association/SCAC <i>ZZZ</i> Mutually agreed	C an..3
X	C058		NAME AND ADDRESS Unstructured name and address: one to five lines.	C
X		3124	Name and address line Free form name and address description.	M an..35
X		3124	Name and address line Free form name and address description.	C an..35
X		3124	Name and address line Free form name and address description.	C an..35
X		3124	Name and address line	C an..35

X		3124	Free form name and address description. Name and address line	C	an..35
O	C080		Free form name and address description. PARTY NAME	C	
			Identification of a transaction party by name, one to five lines. Party name may be formatted.		
O		3036	Party name	M	an..35
			Name of a party involved in a transaction.		
O			1. Name in capitals of the person authorized to sign the shipping document declaring a verified gross mass (weight) (In case of qualifier 'AM') = EDI signature		
			2. Company name of SOLAS verified gross mass responsible party (in case of qualifier 'SPC') (optional occurrence 2) = Company of person signing for Verified Gross Mass		
X		3036	Party name	C	an..35
X		3036	Party name	C	an..35
X		3036	Party name	C	an..35
X		3036	Party name	C	an..35
X		3045	Party name format, coded	C	an..3
			Specification of the representation of a party name.		
O	C059		STREET	C	
			Street address and/or PO Box number in a structured address: one to three lines.		
O		3042	Street and number/p.o. box	M	an..35
			Street and number in plain language, or Post Office Box No.		
X		3042	Street and number/p.o. box	C	an..35
			Street and number in plain language, or Post Office Box No.		
X		3042	Street and number/p.o. box	C	an..35
			Street and number in plain language, or Post Office Box No.		
O	3164		CITY NAME	C	an..35
			Name of a city (a town, a village) for addressing purposes.		
			Verified Gross Mass (weight) obtained location		
O	3229		COUNTRY SUB-ENTITY IDENTIFICATION	C	an..9
			Identification of the name of sub-entities (state, province) defined by appropriate governmental agencies.		
O	3251		POSTCODE IDENTIFICATION	C	an..9
			Code defining postal zones or addresses.		
O	3207		COUNTRY, CODED	C	an..3
			Identification of the name of a country or other geographical entity as specified in ISO 3166.		
			Verified Gross Mass (weight) obtained country		

Segment: **CNT** Control Total
Position: 0360
Group:
Level: 0
Usage: Conditional (Optional)
Max Use: 1
Purpose: A segment to specify the number of containers in the message, explicitly given by the sender.

Comments:

Notes: *Sample segment :*
CNT+1:1'
CNT+16:25'

Data Element Summary

	<u>Data Element</u>	<u>Component Element</u>	<u>Name</u>	<u>Attributes</u>
M	C270		CONTROL	M 1
M		6069	Control total type code qualifier 1 Algebraic total of the quantity values in line items in a message 16 Total number of equipment	M an..3
M		6066	Control total value Dummy value 1 (if e6069 = 1) Number of EQD segments in the message (if e6069 = 16)	M n..18
X		6411	Measurement unit code	C an..3

Segment: UNT Message Trailer
Position: 0370
Group:
Level: 0
Usage: Mandatory
Max Use: 1
Purpose: A service segment ending a message, giving the total number of segments in the message (including the UNH & UNT) and the control reference number of the message.

Comments:

Notes: *Sample segment :*
UNT+32+100011544142'

Data Element Summary

	<u>Data Element</u>	<u>Component Element</u>	<u>Name</u>	<u>Attributes</u>
M	0074		NUMBER OF SEGMENTS IN A MESSAGE <i>Total number of segments in the message including UNH and UNT segments, but excluding UNA, UNB and UNZ segments</i>	M 1 n..6
M	0062		MESSAGE REFERENCE NUMBER <i>Message reference identical to e0062 in UNH segment</i>	M 1 an..14

8. SAMPLE MESSAGE

Keeping in mind that an EDIFACT message is an uninterrupted character string every segment in this example is printed in a new line in order to obtain better readability.

Example #1: LOADING report for one standard and one DG container

UNB+UNOA:2+DEHAMHLOFEPLAN+DEHAMHHLBUKAI1+950725:1122+1'	Header information
UNH+2+COARRI:D:95B:UN:ITG12'	COARRI loading report
BGM+270+19950000003+9'	Vessel
TDT+20+4321+1++HLC:172:20+++DHEE:103::ESSEN XPR'	Port and berth of loading
LOC+9+DEHAM:139:6+BK8:BER:ZZZ'	Arrival date/time
DTM+132:199507252000:203'	Carrier
NAD+CA+HLC:160:20'	
EQD+CN+HLCU2389855+2200:102:5+++5'	1st container
RFF+BN:0102000'	Booking number
TMD+11'	house/house
DTM+203:199507252210:203'	Loading date/time
LOC+11+SGSIN:139:6'	POD Singapore
LOC+7+THBKK:139:6'	Final destination Bangkok
LOC+147+0340210::5'	Stowage position
MEA+AET+VGM+KGM:13450'	Verified Gross Mass (weight)
SEL+6789+CU'	Customs's seal number
FTX+ABS++63::184'	to be inspected
TDT+10+3333+1+11+UNI:ZZZ:87+++DIGB:103'	Pre-carriage: feeder ship
LOC+5+DKAAR::6'	Place of departure Aarhus
DTM+132:199507221123:203'	Cont. already delivered
EQD+CN+NYKU2038494+2200:102:5+++5'	2nd container
RFF+BN:0103000'	Booking number
RFF+CV:7'	DG reference number
TMD+11'	house/house
LOC+11+SGSIN:139:6'	POD Singapore
MEA+AET+VGM+KGM:8300'	Verified Gross Mass (weight)
SEL+780+CA'	Carrier's seal number
FTX+AAA+++DIACETYL'	Commodity
DGS+IMD+3.2+2346+55:CEL'	Dangerous goods information
TDT+10++3+31+::SCHENKER+++HH-MM 22:146'	Pre-carriage: truck
LOC+5+DEKEL::6'	Place of departure Kiel
DTM+132:199507252200:203'	ETA
NAD+CF+NYK:160:20'	Container operator
CNT+1:1'	dummy
UNT+33+2'	Reference to UNH
UNZ+1+1'	Reference to UNB

Example #2: LOADING report for two break bulk pieces where piece #1 shall be stowed on a platform and piece #2 shall be stowed without supporting equipment

UNB+UNOA:2+DEHAMTCSSTCENT+DEHAMHHLBUKAI1+950725:1122+1'	
UNH+2+COARRI:D:95B:UN:ITG12'	Header information
BGM+270+19950000004+9'	COARRI loading report
TDT+20+4444+1++BSC:172:20+++UJDB:103:'	Vessel
RFF+VON+3333'	Alternative voyage number
LOC+9+DEHAM:139:6'	Port of loading
DTM+132:199507252000:203'	Arrival date/time
DTM+133:199507260830:203'	Departure date/time
NAD+CA+BCL:160:20'	Carrier
EQD+BB+++++5'	1st uncon piece
RFF+BN:121212'	Booking number
TMD+11'	house/house
DTM+203:199507252308:203'	Loading date/time
LOC+11+SGSIN:139:6'	POD Singapore
LOC+7+THBKK:139:6'	Final destination Bangkok
LOC+147+0340210::5'	Stowage position
MEA+AET+G+KGM:29250'	Gross weight
DIM+1+CMT:550:125:166'	Uncon dimensions
FTX+AAA+++CRANE WHEELS'	Commodity
EQA+CN+MMMU0059663'	platform
TDT+10++2+25'	Pre-carriage: railway
LOC+5+DEMUC::6'	Place of origin Munich
DTM+132:199507221123:203'	Arrival date/time
EQD+BB+++++5'	2nd uncon piece
RFF+BN:232323'	Booking number
TMD+13'	house/pier
LOC+11+HKHKG:139:6'	POD Hongkong
MEA+AET+G+KGM:23000'	Gross weight
DIM+1+CMT:930:280:485'	Uncon dimensions
FTX+AAA+++YACHT'	Commodity
CNT+16:2'	# of Transport equipment: 2
UNT+30+2'	Reference to UNH
UNZ+1+1'	Reference to UNB

DISCHARGE REPORT SAMPLES**Example #3: DISCHARGE report for one overheight and one reefer container**

UNB+UNOA:2+DEHAMHLOFEPLAN+DEHAMHHLBUKAI1+950725:1122+1'	Header information
UNH+2+COARRI:D:95B:UN:ITG12'	COARRI discharge report
BGM+98+19950000003+9'	Vessel
TDT+20+++1++HLC:172:20+++DHEE:103::ESSEN XPR'	Port and berth of discharge
LOC+11+DEHAM:139:6+BK6:BER:ZZZ'	Arrival date/time
DTM+132:199507252000:203'	Departure date/time
DTM+133:199507260830:203'	Carrier
NAD+CA+HLC:160:20'	
EQD+CN+HLCU2603437+2250:102:5+++5'	1st container
RFF+BN:0102000'	Booking number
DTM+203:199507252359:203'	Discharge date/time
LOC+9+SGSIN:139:6'	POL Singapore
LOC+147+0330406::5'	Stowage cell onboard
MEA+AET+G+KGM:11490'	Gross weight
DIM+9+CMT:::55'	55 cm overheight
SEL+6789+CU'	Customs's seal number
FTX+AAA+++MACHINE PARTS'	Commodity
TDT+30+3333+1+11+UNI:ZZZ:87+++DIGB:103'	On-carriage: feeder ship
LOC+7+DKCPH:139:6'	Final destination Copenhagen
DTM+133:199507261100:203'	Delivery information
EQD+CN+ICSU5306315+2230:102:5+++5'	2nd container
RFF+BN:0103000'	Booking number
TMD+11'	house/house
DTM+203:199507252359:203'	Discharge date/time
LOC+9+SGSIN:139:6'	POL Singapore
LOC+147+0330404::5'	Stowage cell onboard
MEA+AET+G+KGM:8300'	Gross weight
TMP+2+-18.5:CEL'	Transport temperature
FTX+AAA+++FROZEN FISH'	Commodity
TDT+30+++3+31'	On-carriage: truck
LOC+7+DEKEL::6'	Final destination Kiel
NAD+CF+NYK:160:20'	Container operator
CNT+1:1'	Dummy
UNT+34+2'	Reference to UNH
UNZ+1+1'	Reference to UNB

Example #2: DISCHARGE report for two break bulk pieces where piece #1 is stowed on two platforms and piece #2 is stowed without supporting equipment

UNB+UNOA:2+DEHAMTCSSTCENT+DEHAMHHLBUKAI1+950725:1122+1'	
UNH+2+COARRI:D:95B:UN:ITG12'	Header information
BGM+98+19950000004+9'	COARRI discharge report
TDT+20+4444+1++BSC:172:20+++UJDB:103'	Vessel
LOC+11+DEHAM:139:6'	Port of discharge
DTM+132:199507252000:203'	Arrival date/time
DTM+133:199507260830:203'	Departure date/time
NAD+CA+BCL:160:20'	Carrier
EQD+BB+++++5'	1st uncontainerized piece
RFF+BN:121212'	Booking number
TMD+11'	house/house
LOC+9+SGSIN:139:6'	POL Singapore
LOC+147+0090482::5'	1st stowage cell onboard
LOC+147+0090682::5'	2nd stowage cell onboard
MEA+AET+G+KGM:18450'	Gross weight
DIM+1+CMT:550:345:166'	Uncon dimensions
FTX+AAA+++CRANE WHEELS'	Commodity
EQA+CN+MMMU0059663'	1st platform
EQA+CN+MMMU0110385'	2nd platform
TDT+30++2+25'	On-carriage: railway
LOC+7+DEMUC'	Final destination Munich
DTM+133:199507290000:203'	Delivery information
EQD+BB+++++5'	2nd uncon piece
RFF+BN:232323'	Booking number
TMD+11'	house/house
DTM+203:199507260444:203'	Discharge date/time
LOC+9+HKHKG:139:6'	POL Hongkong
LOC+147+0010182::5'	1st stowage cell onboard
LOC+147+0030182::5'	2nd stowage cell onboard
LOC+147+0050182::5'	3rd stowage cell onboard
MEA+AET+G+KGM:21100'	Gross weight
DIM+1+CMT:930:280:485'	Uncon dimensions
FTX+AAA+++YACHT'	Commodity
CNT+1:1'	Dummy
UNT+34+2'	Reference to UNH
UNZ+1+1'	Reference to UNB