



User Manual
(Implementation Guide)

UN/EDIFACT MESSAGE

COARRI
(Container discharge/loading report)

Version 2.1 - 3

D.00B

Version :	2.1
Date :	June 2016
Source :	SMDG User Group for Shipping Lines and Container Terminals



© SMDG

Information in this document is subject to change without notice.

The SMDG claims full copyright to this manual and its contents, however, the manual may be copied and used by anyone, without the consent of SMDG.

It is not allowed to change the contents of this manual!

Revision History

Version	Date	Author(s)	Revision Notes
2.0	March 2003	Jacko Bruyness	Created version
2.1	August 2015	Paul Wauters	Extended for Gross Weight Verification
2.1-1	October 2015	Paul Wauters	Naming
2.1-2	January 2016	Paul Wauters	Updated UNECE official codes/qualifiers
2.1-3	June 2016	Paul Wauters	Aligned VGM additions with existing info



CONTENTS

0.	Introduction	4
1.	General	4
2.	Status Indicators and Usage Indicators....	5
3.	Document Maintenance.....	6
4.	Versions	7
5.	Segment Table	8
6.	Message Structure Diagram	10
7.	Message Description	13
8.	Sample Message	63



0. INTRODUCTION

This User Manual has been developed by the SMDG User Group for Shipping Lines and Container Terminals, a “Global User Group” under the auspices of UN/CEFACT.

This User Manual is based upon the UN/EDIFACT D.00B directory and the ITIGG document “Principles and Rules for the implementation of transport EDI messages – Transport Equipment Movements – Maritime-related container messages”, version 1.3.1, dated September 1996.

This User Manual provides guidance as to the recommended usage of codes, qualifiers, data elements, composites, segments and groups of segments in the D.00B COARRI message. The intention is to assist developers to ensure consistent use of the COARRI message throughout the worldwide trade and transport community.

1. GENERAL

Formal Definition

“A message by which the container terminal reports that the containers specified have been discharged from a seagoing vessel (discharged as ordered, overlanded or shortlanded), or have been loaded into a seagoing vessel. This message is part of a total set of container-related messages. These messages serve to facilitate the intermodal handling of containers by streamlining the information exchange. The business scenario for the container messages is clarified in a separate document, called “Guide to the scenario of EDIFACT container messages”.

The COARRI message is used to transmit a confirmation that containers have been loaded onto or have been discharged from a seagoing vessel. This message is commonly sent by the terminal operator handling the vessel to the shipping line (or it’s agent).

In addition to containers loaded or discharged, the COARRI message may also be used to confirm that containers have been shifted on board the vessel or that containers have been discharged and reloaded (restowed) onto the vessel.



2. STATUS INDICATORS AND USAGE INDICATORS

Status Indicators

Status Indicators (“M” and “C”) form part of the UN/EDIFACT standard and indicate a minimum requirement to fulfil the needs of the message structure. They are not adequate for implementation purposes. The Status Indicators are :

<i>Value</i>	<i>Description</i>
M	Mandatory The entity marked as such must appear in all messages, and apply to these messages as well as to any associated implementation guidelines (and consequently is also a Usage Indicator).
C	Conditional The entity is used by agreement between trading partners.

Usage Indicators

Usage Indicators are implementation–related indicators that further detail the use of “Conditional” Status Indicators. Usage Indicators are applied at all levels of the guidelines and shown adjacent to data items such as segment groups, segments, composite data elements and simple data elements. They dictate the agreed usage of the data items or entities. The Usage Indicators are :

<i>Value</i>	<i>Description</i>
M	Mandatory Indicates the item is mandatory in the UN/EDIFACT message.
R	Required Indicates the item must be transmitted in this implementation.
D	Dependent Indicates that the use of the item is depending on a well-defined condition or set of conditions. These conditions must be clearly specified in the relevant implementation guideline.
O	Optional Indicates that this item is at the need or discretion of both trading partners.
X	Not Used Indicates that this item is not to be used in this implementation.

Where an item within a segment group, segment or composite data element is marked with Usage Indicators “M” or “R”, but the segment group, segment or composite data element has been marked “O” or “D” (or for that matter “X”), the item is only to be transmitted when the segment group, segment or composite of which it is a part, is used.



3. DOCUMENT MAINTENANCE

The data content of this document has been prepared and approved by SMDG and no alteration may be made to the content of this document without reference to and approval of SMDG.

Any remarks, questions, amendments or requested alterations to this document are to be addressed to :

SMDG Secretariat
Seattleweg 7
3195 ND Rotterdam – Pernis
The Netherlands

Phone: +31- (0)10 - 2941100
Fax: +31- (0)10 - 2941105
E-mail: secretariat@smdg.org
WWW www.smdg.org

Paul Wauters
c/o PSA Antwerp / Cosmos NV.
Napelsstraat 79
2000 Antwerp
Belgium

Phone: +32 – (0)3 2607056
Facsimile: +32 – (0)3 2606161
E-mail paul.wauters@globalpsa.com



4. VERSIONS

SMDG21.

Version 2.1, released October 2015, includes amendments for transmission of data specifying a container's verified gross mass (VGM) according to SOLAS regulation 2, chapter VI, paragraphs 4 to 6.

With a short deadline (July 2016) it was decided to do minimum changes - what was considered as an absolute (legal) minimum - to limit the impact on EDI and backend systems of different organizations. It was decided to make additions in the current version without structure changes via existing segments and data elements. Only necessary new qualifier and/or codes will be requested via DMR.

To handle the new SOLAS requirements on Gross Mass Verification, DMR (Data Maintenance Request) for new codes, to handle the new entities, will be submitted to UN/CEFACT. The acceptance of these DMR's are available as from version D.15B The Message Implementation Guides can use 'Temporary' codes indicated between square brackets [xxx] and codes only available in a later version.

Changes for SOLAS in this manual: (codes used as available from UN/EDIFACT version D.15B.)

EQD group segments additions:

MEA – Measurements

VGM – Verified Gross Mass (weight)

NAD – Name and Address

AM – Authorized official – person signing for Verified Gross Mass

SPC – SOLAS Packed Container Verified Gross Mass Responsible party

DTM – Date/Time

798 - Verified gross mass determination date/time - Date/Time when a gross mass (weight) of a packed container was obtained according to SOLAS chapter VI, regulation 2, paragraphs 4-6

FTX – Free text (ABS) container condition – SMDG maintained codes

SM1 – Solas Method 1 – Verified Gross Mass obtained by weighing

SM2 – Solas Method 2 – Verified Gross Mass obtained by calculation

RFF – References

VGR – Verified Gross Mass Reference – link to VGM information



COARRI - Container Discharge/Loading Report Message

Introduction:

A message by which the container terminal reports that the containers specified have been discharged from a seagoing vessel (discharged as ordered, overlanded or shortlanded), or have been loaded into a seagoing vessel.

This message is part of a total set of container-related messages. These messages serve to facilitate the intermodal handling of containers by streamlining the information exchange. The business scenario for the container messages is clarified in a separate document, called: 'Guide to the scenario of EDIFACT container messages'.

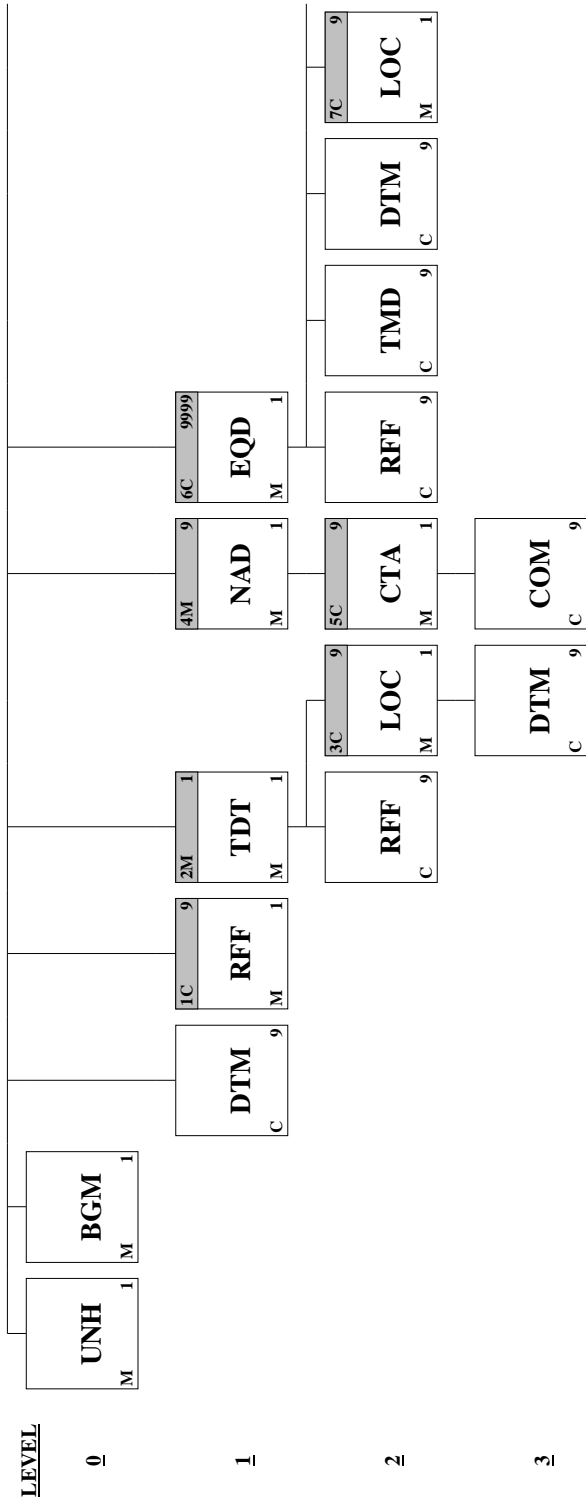
	<u>Pos. No.</u>	<u>Seg. ID</u>	<u>Name</u>	<u>Req. Des.</u>	<u>Max.Use</u>	<u>Group Repeat</u>	<u>Notes and Comments</u>
M	0010	UNH	Message Header	M	1		
M	0020	BGM	Beginning of Message	M	1		
R	0030	DTM	Date/Time/Period	C	9		
O	0050		Segment Group 1: RFF	C		9	
M	0060	RFF	Reference	M	1		
M	0080		Segment Group 2: TDT-RFF-SG3	M		1	
M	0090	TDT	Details of Transport	M	1		
O	0110	RFF	Reference	C	9		
O	0120		Segment Group 3: LOC-DTM	C		9	
M	0130	LOC	Place/Location Identification	M	1		
O	0140	DTM	Date/Time/Period	C	9		
M	0150		Segment Group 4: NAD-SG5	M		9	
M	0160	NAD	Name and Address	M	1		
O	0170		Segment Group 5: CTA-COM	C		9	
M	0180	CTA	Contact Information	M	1		
O	0190	COM	Communication Contact	C	9		
R	0200		Segment Group 6: EQD-RFF-TMD-DTM-SG7-MEA-DIM-SG8-SEL-FTX-SG9-EQA-HAN-SG11-SG12-NAD	C		9999	
M	0210	EQD	Equipment Details	M	1		
O	0220	RFF	Reference	C	9		
O	0240	TMD	Transport Movement Details	C	9		
R	0250	DTM	Date/Time/Period	C	9		
R	0260		Segment Group 7: LOC	C		9	
M	0270	LOC	Place/Location Identification	M	1		
O	0290	MEA	Measurements	C	9		
O	0300	DIM	Dimensions	C	9		
O	0310		Segment Group 8: TMP-RNG	C		9	
M	0320	TMP	Temperature	M	1		
O	0330	RNG	Range Details	C	1		



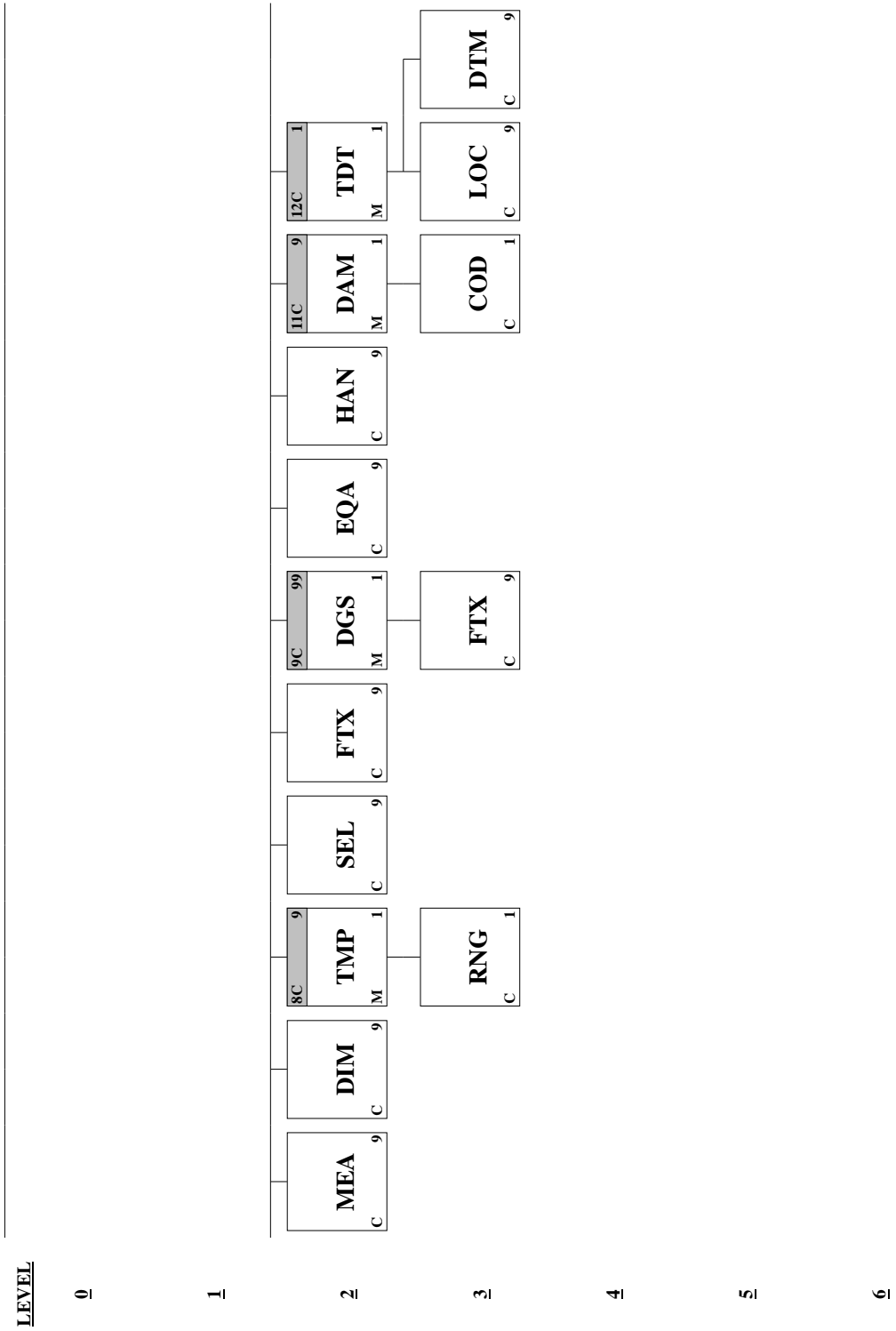
O	0340	SEL	Seal Number	C	9
O	0350	FTX	Free Text	C	9
O	0370		Segment Group 9: DGS-FTX	C	99
M	0380	DGS	Dangerous Goods	M	1
O	0390	FTX	Free Text	C	9
O	0440	EQA	Attached Equipment	C	9
O	0470	HAN	Handling Instructions	C	9
O	0480		Segment Group 11: DAM-COD	C	9
M	0490	DAM	Damage	M	1
O	0500	COD	Component Details	C	1
O	0510		Segment Group 12: TDT-LOC-DTM	C	1
M	0520	TDT	Details of Transport	M	1
O	0530	LOC	Place/Location Identification	C	9
O	0540	DTM	Date/Time/Period	C	9
O	0550	NAD	Name and Address	C	9
O	0560	CNT	Control Total	C	1
M	0570	UNT	Message Trailer	M	1

Segments not used are not present in this list

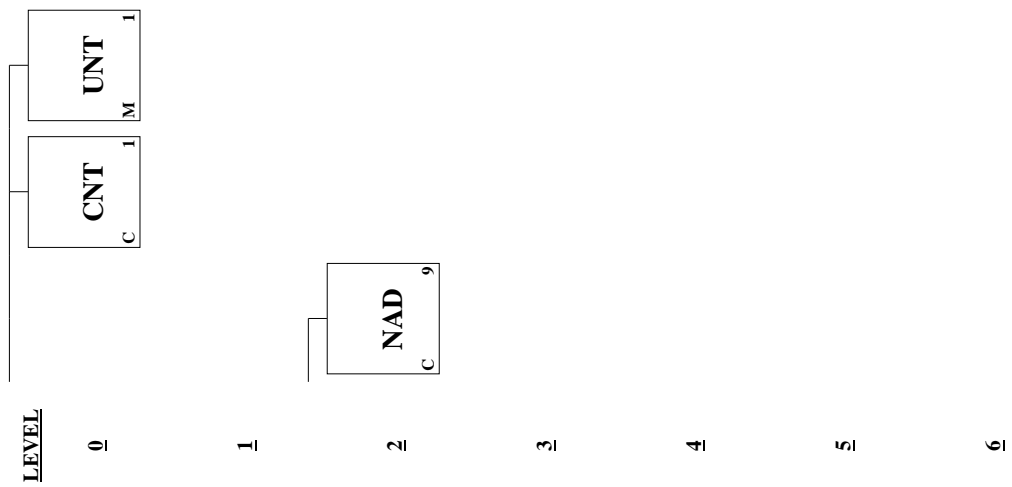
SMDG



SMDG



SMDG





Segment: UNH Message Header
Position: 0010
Group:
Level: 0
Usage: Mandatory
Max Use: 1
Purpose: A service segment starting and uniquely identifying a message. The message type code for the Container discharge/loading report message is COARRI.
 Note: Container discharge/loading report messages conforming to this document must contain the following data in segment UNH, composite S009:
 Data element 0065 COARRI 0052 D 0054 00B 0051 UN

Comments:

Notes: *Sample segment :*
UNH+SN241445110001+COARRI:D:00B:UN:SMDG21'

Data Element Summary

	<u>Data Element</u>	<u>Component Element</u>	<u>Name</u>	<u>Attributes</u>
M	0062		MESSAGE REFERENCE NUMBER <i>Unique message reference assigned by the sender. This reference must also be transmitted in the UNT segment.</i>	M 1 an..14
M	S009		MESSAGE IDENTIFIER	M 1
M		0065	Message type identifier <i>COARRI Container discharge/loading report message</i>	M an..6
M		0052	Message type version number <i>D Draft version/UN/EDIFACT Directory</i>	M an..3
M		0054	Message type release number <i>00B Release 2000 - B</i>	M an..3
M		0051	Controlling agency <i>UN UN/CEFACT</i>	M an..2
R		0057	Association assigned code <i>SMDG21 SMDG Version 2.1</i>	C an..6
O	0068		COMMON ACCESS REFERENCE <i>Additional message reference (if required)</i>	C 1 an..35
X	S010		STATUS OF THE TRANSFER	C 1
X		0070	Sequence message transfer number	M n..2
X		0073	First/last sequence message transfer indication	C a1



Segment: **BGM** Beginning of Message
Position: 0020
Group:
Level: 0
Usage: Mandatory
Max Use: 1
Purpose: A segment to indicate the beginning of a message and to transmit identifying number and the further specification of the message type (in data element 1001: Document name code), such as Loading report, Discharge report.

Comments:

Notes: *Sample segment :*
BGM+122+SN241445110001+9+AB'

Data Element Summary

	<u>Data Element</u>	<u>Component Element</u>	<u>Name</u>	<u>Attributes</u>
R	C002		DOCUMENT/MESSAGE NAME	C 1
R		1001	Document name code 24 <i>Restow</i> <i>Only used to report position to which equipment is restowed (new stowage position). Position from which equipment is restowed is not to be reported</i> 119 <i>Transport discharge report</i> 122 <i>Transport loading report</i>	C an..3
X		1131	Code list identification code	C an..17
X		3055	Code list responsible agency code	C an..3
X		1000	Document name	C an..35
R	C106		DOCUMENT/MESSAGE IDENTIFICATION	C 1
R		1004	Document identifier <i>Sender's unique reference number</i>	C an..35
X		1056	Version identifier	C an..9
X		1060	Revision identifier	C an..6
R	1225		MESSAGE FUNCTION CODE <i>If code 1 or 5 is used, reference number of the message which is being cancelled/replaced must appear in the header level RFF using the code ACW in e1153.</i> 1 <i>Cancellation</i> 5 <i>Replace</i> 9 <i>Original</i>	C 1 an..3
O	4343		RESPONSE TYPE CODE AB <i>Message acknowledgement</i>	C 1 an..3



Segment: **DTM** Date/Time/Period
Position: 0030
Group:
Level: 1
Usage: Conditional (Required)
Max Use: 9
Purpose: A segment to indicate the message date and time
Comments:
Notes: *Sample segment :*
DTM+137:200211150114:203'

Data Element Summary

	<u>Data Element</u>	<u>Component Element</u>	<u>Name</u>	<u>Attributes</u>
M	C507		DATE/TIME/PERIOD	M 1
M		2005	Date or time or period function code qualifier <i>137 Document/message date/time</i>	M an..3
R		2380	Date or time or period value <i>Date/time that the message was prepared</i>	C an..35
R		2379	Date or time or period format code <i>203 CCYYMMDDHHMM</i>	C an..3



Segment: **RFF** Reference
Position: 0060 (Trigger Segment)
Group: Segment Group 1 (Reference) Conditional (Optional)
Level: 1
Usage: Mandatory
Max Use: 1
Purpose: A segment to express a reference which applies to the entire message, such as: -
 reference to previous message

Comments:

Notes: *Sample segment :*
RFF+AAY:58S/0220'

Data Element Summary

	<u>Data Element</u>	<u>Component Element</u>	<u>Name</u>	<u>Attributes</u>
M	C506		REFERENCE	M 1
M		1153	Reference code qualifier	M an..3
			AAY <i>Carrier's agent reference number</i>	
			ACA <i>Cargo acceptance order reference number</i>	
			ACW <i>Reference number to previous message</i>	
			AKA <i>Container disposition order reference number</i>	
			ARJ <i>Personal identity card number</i>	
			ATX <i>Transport equipment acceptance order reference</i>	
			ATY <i>Transport equipment release order reference</i>	
			BM <i>Bill of lading number</i>	
			BN <i>Booking reference number</i>	
			CN <i>Carrier's reference number</i>	
			RE <i>Release number</i>	
R		1154	Reference identifier <i>Reference number</i>	C an..70
X		1156	Document line identifier	C an..6
X		4000	Reference version identifier	C an..35
X		1060	Revision identifier	C an..6



Segment: **TDT** Details of Transport
Position: 0090 (Trigger Segment)
Group: Segment Group 2 (Details of Transport) Mandatory
Level: 1
Usage: Mandatory
Max Use: 1
Purpose: A segment identifying the voyage of the vessel relevant to the message (main transport).

Comments:

Notes: *Sample segment :*
TDT+20+0220+1++MAE:172:20:MAERSK+++8212661:146:11:SL PRIDE:US'

Data Element Summary

	<u>Data Element</u>	<u>Component Element</u>	<u>Name</u>	<u>Attributes</u>
M	8051		TRANSPORT STAGE CODE QUALIFIER 20 Main-carriage transport	M 1 an..3
D	8028		MEANS OF TRANSPORT JOURNEY IDENTIFIER Vessel operator's voyage number	C 1 an..17
<i>Either this element or the Group 2 RFF must be used to specify a voyage number.</i>				
R	C220		MODE OF TRANSPORT	C 1
R		8067	Transport mode name code 1 Maritime transport (ocean)	C an..3
X		8066	Transport mode name	C an..17
O	C228		TRANSPORT MEANS	C 1
O		8179	Transport means description code Means of transport code (UN/ECE Recommendation 28)	C an..8
O		8178	Transport means description Type of means of transport (free text)	C an..17
R	C040		CARRIER	C 1
R		3127	Carrier identifier Vessel operator's code	C an..17
O		1131	Code list identification code 172 Carriers	C an..17
O		3055	Code list responsible agency code 20 BIC (Bureau International des Containeurs) 87 Assigned by carrier 166 US, National Motor Freight Classification Association 184 AU, ACOS (Australian Chamber of Shipping) SMD SMDG (Shipplanning Message Development Group)	C an..3



		<i>Temporary code</i>			
		<i>ZZZ</i>	<i>Mutually defined</i>		
O		3128	Carrier name <i>Vessel operator's name (free text)</i>	C	an..35
X	8101		TRANSIT DIRECTION INDICATOR CODE	C	1 an..3
X	C401		EXCESS TRANSPORTATION INFORMATION	C	1
X		8457	Excess transportation reason code	M	an..3
X		8459	Excess transportation responsibility code	M	an..3
X		7130	Customer shipment authorisation identifier	C	an..17
D	C222		TRANSPORT IDENTIFICATION	C	1
D		8213	Transport means identification name identifier <i>Lloyd's (IMO) number</i>	C	an..9
<i>Either this element or the Group 2 RFF must be used to specify a vessel id.</i>					
O		1131	Code list identification code <i>146 Means of transport identification</i>	C	an..17
O		3055	Code list responsible agency code <i>11 Lloyd's register of shipping</i>	C	an..3
O		8212	Transport means identification name <i>Vessel name (free text)</i>	C	an..35
O		8453	Transport means nationality code <i>Flag of means of transport (ISO country code).</i>	C	an..3
X	8281		TRANSPORT MEANS OWNERSHIP INDICATOR CODE	C	1 an..3



Segment: **RFF** Reference
Position: 0110
Group: Segment Group 2 (Details of Transport) Mandatory
Level: 2
Usage: Conditional (Optional)
Max Use: 9
Purpose: A segment to provide alternative (non vessel operator's) voyage number and other references related to the main carriage means of transport.

Comments:

Notes: *Sample segment :*
RFF+VM:WDA3673'

Data Element Summary

	<u>Data Element</u>	<u>Component Element</u>	<u>Name</u>	<u>Attributes</u>
M	C506		REFERENCE	M 1
M		1153	Reference code qualifier	M an..3
			ATZ Ship's stay reference number	
			MA Ship notice/manifest number	
			VM Vessel identification	
			VON Voyage number	
R		1154	Reference identifier	C an..70
			<i>Callsign (if C506.e1153 = 'VM')</i>	
			<i>Alternative (non vessel operator's) voyage number (if C506.e1153 = 'VON')</i>	
			<i>Manifest number (if C506.e1153 = 'MA')</i>	
			<i>Other reference (if C506.e1153 = 'ATZ')</i>	
X		1156	Document line identifier	C an..6
X		4000	Reference version identifier	C an..35
X		1060	Revision identifier	C an..6



Segment: **LOC** Place/Location Identification
Position: 0130 (Trigger Segment)
Group: Segment Group 3 (Place/Location Identification) Conditional (Optional)
Level: 2
Usage: Mandatory
Max Use: 1
Purpose: A segment to specify a location related to the means of transport such as places and ports of arrival and departure.

Comments:

Notes: *Sample segment :*
LOC+9+NLRTM:139:6:ROTTERDAM+APMROT:72:SMD:APM
TERMINALS+8200:266:ZZZ'

Data Element Summary

	<u>Data Element</u>	<u>Component Element</u>	<u>Name</u>	<u>Attributes</u>
M	3227		LOCATION FUNCTION CODE QUALIFIER	M 1 an..3
			9 <i>Place/port of loading</i>	
			11 <i>Place/port of discharge</i>	
			175 <i>Activity location</i>	
R	C517		LOCATION IDENTIFICATION	C 1
O		3225	Location name code	C an..25
			UNLOCODE	
O		1131	Code list identification code	C an..17
			139 <i>Port</i>	
O		3055	Code list responsible agency code	C an..3
			6 <i>UN/ECE (United Nations - Economic Commission for Europe)</i>	
O		3224	Location name	C an..256
			<i>Port name (free text)</i>	
O	C519		RELATED LOCATION ONE IDENTIFICATION	C 1
O		3223	First related location name code	C an..25
			<i>1st related location code</i>	
O		1131	Code list identification code	C an..17
			72 <i>Container terminal</i>	
			266 <i>Marine berth</i>	
			267 <i>Marine wharf</i>	
O		3055	Code list responsible agency code	C an..3
			9 <i>EAN (International Article Numbering association)</i>	
			184 <i>AU, ACOS (Australian Chamber of Shipping)</i>	
			SMD <i>SMDG (Shipplanning Message Development Group)</i>	
			Temporary code	
			ZZZ <i>Mutually defined</i>	
O		3222	First related location name	C an..70



		<i>1st related location name (free text)</i>		
O	C553	RELATED LOCATION TWO IDENTIFICATION	C	1
O		3233 Second related location name code	C	an..25
		<i>2nd related location code</i>		
O		1131 Code list identification code	C	an..17
		72 <i>Container terminal</i>		
		266 <i>Marine berth</i>		
		267 <i>Marine wharf</i>		
O		3055 Code list responsible agency code	C	an..3
		9 <i>EAN (International Article Numbering association)</i>		
		184 <i>AU, ACOS (Australian Chamber of Shipping)</i>		
		SMD <i>SMDG (Shipplanning Message Development Group)</i>		
		Temporary code		
		ZZZ <i>Mutually defined</i>		
O		3232 Second related location name	C	an..70
		<i>2nd related location name (free text)</i>		
X	5479	RELATION CODE	C	1 an..3



Segment: **DTM** Date/Time/Period
Position: 0140
Group: Segment Group 3 (Place/Location Identification) Conditional (Optional)
Level: 3
Usage: Conditional (Optional)
Max Use: 9
Purpose: A segment to specify the date(s) and time(s) related to a location.

Comments:

Notes: *Sample segment :*
DTM+133:200211131700:203'

Data Element Summary

	<u>Data Element</u>	<u>Component Element</u>	<u>Name</u>	<u>Attributes</u>
M	C507		DATE/TIME/PERIOD	M 1
M		2005	Date or time or period function code qualifier	M an..3
			132 <i>Arrival date/time, estimated</i>	
			133 <i>Departure date/time, estimated</i>	
			178 <i>Arrival date/time, actual</i>	
			186 <i>Departure date/time, actual</i>	
R		2380	Date or time or period value	C an..35
			<i>Arrival/departure date/time</i>	
R		2379	Date or time or period format code	C an..3
			203 <i>CCYYMMDDHHMM</i>	



Segment: **NAD** Name and Address
Position: 0160 (Trigger Segment)
Group: Segment Group 4 (Name and Address) Mandatory
Level: 1
Usage: Mandatory
Max Use: 1
Purpose: A segment to identify the party's which apply to the whole message
Comments:
Notes: *Sample segment :*
NAD+CF+MAE:172:20'

Data Element Summary

	<u>Data Element</u>	<u>Component Element</u>	<u>Name</u>	<u>Attributes</u>
M	3035		PARTY FUNCTION CODE QUALIFIER	M 1 an..3
			CA Carrier	
			CF Container operator/lessee	
			HR Shipping line service	
			MR Message recipient	
			MS Document/message issuer/sender	
O	C082		PARTY IDENTIFICATION DETAILS	C 1
M		3039	Party identifier	M an..35
			Company code	
O		1131	Code list identification code	C an..17
			160 Party identification	
			172 Carriers	
O		3055	Code list responsible agency code	C an..3
			20 BIC (Bureau International des Containeurs)	
			87 Assigned by carrier	
			166 US, National Motor Freight Classification Association	
			184 AU, ACOS (Australian Chamber of Shipping)	
			SMDG (Shipplanning Message Development Group)	
			Temporary code	
			ZZZ Mutually defined	
O	C058		NAME AND ADDRESS	C 1
			<i>The use of C058 is allowed to accomodate specific local requirements that exist in several ports. The use of C058 however is in general not recommended - whenever possible it is suggested to use C082 instead.</i>	
M		3124	Name and address description	M an..35
O		3124	Name and address description	C an..35
O		3124	Name and address description	C an..35
O		3124	Name and address description	C an..35



O		3124	Name and address description	C	an..35
X	C080		PARTY NAME	C	1
X		3036	Party name	M	an..35
X		3036	Party name	C	an..35
X		3036	Party name	C	an..35
X		3036	Party name	C	an..35
X		3036	Party name	C	an..35
X		3045	Party name format code	C	an..3
X	C059		STREET	C	1
X		3042	Street and number or post office box identifier	M	an..35
X		3042	Street and number or post office box identifier	C	an..35
X		3042	Street and number or post office box identifier	C	an..35
X		3042	Street and number or post office box identifier	C	an..35
X	3164		CITY NAME	C	1 an..35
X	C819		COUNTRY SUB-ENTITY DETAILS	C	1
X		3229	Country sub-entity name code	C	an..9
X		1131	Code list identification code	C	an..17
X		3055	Code list responsible agency code	C	an..3
X		3228	Country sub-entity name	C	an..35
X	3251		POSTAL IDENTIFICATION CODE	C	1 an..17
X	3207		COUNTRY NAME CODE	C	1 an..3



Segment: **CTA** Contact Information
Position: 0180 (Trigger Segment)
Group: Segment Group 5 (Contact Information) Conditional (Optional)
Level: 2
Usage: Mandatory
Max Use: 1
Purpose: A segment to identify a person or department of a message sender and/or message recipient, such as: - information contact

Comments:

Notes: *Sample segment :*
CTA+IC+:MARINE PLANNING'

Data Element Summary

	<u>Data Element</u>	<u>Component Element</u>	<u>Name</u>	<u>Attributes</u>
R	3139		CONTACT FUNCTION CODE <i>IC Information contact</i>	C 1 an..3
R	C056		DEPARTMENT OR EMPLOYEE DETAILS	C 1
X		3413	<i>Department or employee name code</i>	C an..17
R		3412	Department or employee name <i>Contact name</i>	C an..35



Segment: **COM** Communication Contact
Position: 0190
Group: Segment Group 5 (Contact Information) Conditional (Optional)
Level: 3
Usage: Conditional (Optional)
Max Use: 9
Purpose: A segment to identify a communication number of a person or department to whom communication should be directed.

Comments:

Notes: *Sample segment :*
COM+0181372420:TE'

Data Element Summary

	<u>Data Element</u>	<u>Component Element</u>	<u>Name</u>	<u>Attributes</u>
M	C076		COMMUNICATION CONTACT	M 3
M		3148	Communication address identifier <i>Contact number</i>	M an..512
M		3155	Communication address code qualifier	M an..3
			<i>EM Electronic mail</i>	
			<i>FX Telefax</i>	
			<i>TE Telephone</i>	
			<i>TL Telex</i>	
			<i>XF X.400 address</i>	



Segment: EQD Equipment Details
Position: 0210 (Trigger Segment)
Group: Segment Group 6 (Equipment Details) Conditional (Required)
Level: 1
Usage: Mandatory
Max Use: 1
Purpose: A segment identifying a container, container size/type. The equipment status may be e.g. overlanded, shortlanded, import, export.

Comments:

Notes: *Sample segment :*
 EQD+CN+MAEU5174506+4532:102:5+2+2+5'

Data Element Summary

	<u>Data Element</u>	<u>Component Element</u>	<u>Name</u>	<u>Attributes</u>
M	8053		EQUIPMENT TYPE CODE QUALIFIER	M 1 an..3
			BB Break bulk	
			Temporary code	
			BPP Truck and trailer combination being transported	
			CH Chassis	
			CN Container	
			RG Reefer generator	
			Power pack	
			SW Swap body	
			TE Trailer	
O	C237		EQUIPMENT IDENTIFICATION	C 1
R		8260	Equipment identifier	C an..17
			<i>Marks (letters/numbers) identifying equipment. To be transmitted as they appear on the equipment.</i>	
X		1131	Code list identification code	C an..17
X		3055	Code list responsible agency code	C an..3
X		3207	Country name code	C an..3
D	C224		EQUIPMENT SIZE AND TYPE	C 1
O		8155	Equipment size and type description code	C an..10
			<i>Equipment size/type code as per ISO6346 (.1 or.2, .2 preferred)</i>	
O		1131	Code list identification code	C an..17
			102 Size and type	
O		3055	Code list responsible agency code	C an..3
			5 ISO (International Organization for Standardization)	
O		8154	Equipment size and type description	C an..35
			<i>Equipment size/type (free text)</i>	
O	8077		EQUIPMENT SUPPLIER CODE	C 1 an..3
			1 Shipper supplied	
			2 Carrier supplied	



O	8249	5	<i>Third party supplied</i>	C	1 an..3
		EQUIPMENT STATUS CODE			
		1	<i>Continental</i>		
		2	<i>Export</i>		
		3	<i>Import</i>		
		5	<i>Shifter</i>		
			<i>Restow "cell - cell"</i>		
		6	<i>Transshipment</i>		
		7	<i>Shortlanded</i>		
		8	<i>Overlanded</i>		
		14	<i>Reloader</i>		
			<i>Restow "cell - pier - cell"</i>		
R	8169		FULL OR EMPTY INDICATOR CODE	C	1 an..3
		4	<i>Empty</i>		
		5	<i>Full</i>		
		6	<i>No volume available</i>		
			<i>To be used in case of break bulk.</i>		



Segment: **RFF** Reference
Position: 0220
Group: Segment Group 6 (Equipment Details) Conditional (Required)
Level: 2
Usage: Conditional (Optional)
Max Use: 9
Purpose: A segment identifying a reference number which relates to the equipment specified in the preceding EQD segment, such as:
 - container sequence number - booking reference number
Comments:
Notes: *Sample segment :*
RFF+BN:ROTO45683'

Data Element Summary

	<u>Data Element</u>	<u>Component Element</u>	<u>Name</u>	<u>Attributes</u>
M	C506		REFERENCE	M 1
M		1153	Reference code qualifier	M an..3
			AAE	Goods declaration number
			AAO	Consignee's shipment reference number
			AAY	Carrier's agent reference number
			ABT	Customs declaration number
			ABZ	Vehicle licence number
			ACD	Additional reference number
			AHI	Transport contract reference number
			AKB	Container prefix
			AKG	Vehicle Identification Number (VIN)
			AKW	Transport costs reference number
			ARJ	Personal identity card number
			ATW	Flat rack container bundle identification number
			AUA	Place of positioning reference
			BM	Bill of lading number
			BN	Booking reference number
			BST	Blockstow reference
			Temporary code	
			BT	Batch number/lot number
			CN	Carrier's reference number
			CT	Contract number
			CU	Consignor's reference number
			CV	Container operators reference number
			DR	Dock receipt number
			EQ	Equipment number
			To be used in the event that an alternative equipment number is to be quoted in addition to	



				<i>the number in the EQD.</i>
		ER		Container/equipment receipt number
		MKS		Marks and numbers
		RE		Release number
		SQ		Equipment sequence number
		TF		Transfer number
		UCN		Unique consignment reference number
		VN		Order number (vendor)
		VT		Motor vehicle identification number
O		VGR		Transport equipment gross mass verification reference number
				<i>Code as available from version D.15B:</i>
				<i>Identification reference to documentation of transport equipment gross mass (weight) verification</i>
R	1154	Reference identifier	C	an..70
		<i>Reference number</i>		
X	1156	Document line identifier	C	an..6
X	4000	Reference version identifier	C	an..35
X	1060	Revision identifier	C	an..6



Segment: **TMD** Transport Movement Details
Position: 0240
Group: Segment Group 6 (Equipment Details) Conditional (Required)
Level: 2
Usage: Conditional (Optional)
Max Use: 9
Purpose: A segment to indicate a Full Container Load (FCL) or a Less than Full Container Load (LCL).
Comments:
Notes: *Sample segment :
TMD+3++1'*

Data Element Summary

	<u>Data Element</u>	<u>Component Element</u>	<u>Name</u>	<u>Attributes</u>
R	C219		MOVEMENT TYPE	C 1
R		8335	Movement type description code	C an..3
		2	LCL/LCL = Pier/Pier = CFS/CFS	
		3	FCL/FCL = House/House = CY/CY	
		4	FCL/LCL = House/Pier = CY/CFS	
		5	LCL/FCL = Pier/House = CFS/CY	
X		8334	Movement type description	C an..35
X	8332		EQUIPMENT PLAN DESCRIPTION	C 1 an..26
O	8341		HAULAGE ARRANGEMENTS CODE	C 1 an..3
		1	Carrier	
		2	Merchant	



Segment: **DTM** Date/Time/Period
Position: 0250
Group: Segment Group 6 (Equipment Details) Conditional (Required)
Level: 2
Usage: Conditional (Required)
Max Use: 9
Purpose: A segment to identify a date and time related to the equipment, such as: - Date and/or time of actual loading or discharge

Comments:

Notes: *Sample segment :*
DTM+404:200211150104:203'

Data Element Summary

	<u>Data Element</u>	<u>Component Element</u>	<u>Name</u>	<u>Attributes</u>
M	C507		DATE/TIME/PERIOD	M 1
M		2005	Date or time or period function code qualifier	M an..3
			7 <i>Effective date/time</i>	
			181 <i>Positioning date/time of equipment</i>	
			394 <i>Equipment positioning date/time, actual</i>	
			403 <i>Discharge date/time, actual</i>	
			404 <i>Loading date/time, actual</i>	
			798 <i>Verified gross mass determination date/time</i>	
			Code as available from version D.15B:	
			Date/Time when a gross mass (weight) of a packed container was obtained for verification according to SOLAS chapter VI, regulation 2, paragraphs 4-6	
R		2380	Date or time or period value	C an..35
			<i>Date/time of actual loading, discharge, restow.</i>	
R		2379	Date or time or period format code	C an..3
			203 <i>CCYYMMDDHHMM</i>	



Segment: **LOC** Place/Location Identification
Position: 0270 (Trigger Segment)
Group: Segment Group 7 (Place/Location Identification) Conditional (Required)
Level: 2
Usage: Mandatory
Max Use: 1
Purpose: A segment to identify a location or country related to the equipment, such as: -
 stowage cell - (final) place/port of discharge - transshipment place - place of
 delivery - country of origin/destination
Comments:
Notes: *Sample segment :*
LOC+11+USCHS:139:6:CHARLESTON, SC+WANDO:72:ZZZ:WANDO TERMINAL'
LOC+147+0500284'

Data Element Summary

	<u>Data Element</u>	<u>Component Element</u>	<u>Name</u>	<u>Attributes</u>
M	3227		LOCATION FUNCTION CODE QUALIFIER	M 1 an..3
			5 <i>Place of departure</i>	
			7 <i>Place of delivery</i>	
			8 <i>Place of destination</i>	
			9 <i>Place/port of loading</i>	
			11 <i>Place/port of discharge</i>	
			13 <i>Place of transshipment</i>	
			15 <i>Place of transfer responsibility</i>	
			33 <i>Baseport of discharge</i>	
			34 <i>Baseport of loading</i>	
			65 <i>Final port or place of discharge</i>	
			88 <i>Place of receipt</i>	
			98 <i>Place of empty equipment despatch</i>	
			147 <i>Stowage cell</i>	
			Required in case of loading report	
			154 <i>Place/location of on-hire</i>	
			155 <i>Place/location of off-hire</i>	
			170 <i>Final port of discharge</i>	
			171 <i>Place of destination for pre-stacking prior to stowage</i>	
			175 <i>Activity location</i>	
R	C517		LOCATION IDENTIFICATION	C 1
O		3225	Location name code	C an..25
			UNLOCODE	
			Stowage location (ISO format BBBRRTT) (if e3227 = 147)	
O		1131	Code list identification code	C an..17



		139	Port		
O		3055	Code list responsible agency code	C	an..3
		5	ISO (International Organization for Standardization)		
		6	UN/ECE (United Nations - Economic Commission for Europe)		
O		3224	Location name	C	an..256
			<i>Place/location name (free text)</i>		
O	C519		RELATED LOCATION ONE IDENTIFICATION	C	1
O		3223	First related location name code	C	an..25
			<i>1st related location code</i>		
O		1131	Code list identification code	C	an..17
		72	Container terminal		
		261	Consignee's premises		
		262	Consignor's premises		
		263	Packing and/or unpacking facility		
		264	Storage facility		
		265	Repair facility		
		266	Marine berth		
		267	Marine wharf		
		268	Gate		
		269	Warehouse		
O		3055	Code list responsible agency code	C	an..3
		9	EAN (International Article Numbering association)		
		184	AU, ACOS (Australian Chamber of Shipping)		
		SMD	SMDG (Shipplanning Message Development Group)		
			Temporary code		
		ZZZ	Mutually defined		
O		3222	First related location name	C	an..70
			<i>1st related location name (free text)</i>		
O	C553		RELATED LOCATION TWO IDENTIFICATION	C	1
O		3233	Second related location name code	C	an..25
			<i>2nd related location code.</i>		
O		1131	Code list identification code	C	an..17
		5	Facility identification		
		72	Container terminal		
		261	Consignee's premises		
		262	Consignor's premises		
		263	Packing and/or unpacking facility		
		264	Storage facility		
		265	Repair facility		
		266	Marine berth		
		267	Marine wharf		
		268	Gate		
		269	Warehouse		



O	3055	Code list responsible agency code	C	an..3
		9		<i>EAN (International Article Numbering association)</i>
		184		<i>AU, ACOS (Australian Chamber of Shipping)</i>
		SMD		<i>SMDG (Shiplanning Message Development Group)</i>
				Temporary code
		ZZZ		<i>Mutually defined</i>
O	3232	Second related location name	C	an..70
		2nd related location name (free text).		
X	5479	RELATION CODE	C	1 an..3



Segment: **MEA** Measurements
Position: 0290
Group: Segment Group 6 (Equipment Details) Conditional (Required)
Level: 2
Usage: Conditional (Optional)
Max Use: 9
Purpose: A segment specifying a physical measurement related to the equipment, such as:
 - gross weight

Comments:
Notes: *Sample segment :*
MEA+AAE+VGM+KGM:27510'

Data Element Summary

	<u>Data Element</u>	<u>Component Element</u>	<u>Name</u>	<u>Attributes</u>
M	6311		MEASUREMENT PURPOSE CODE QUALIFIER AAE <i>Measurement</i>	M 1 an..3
R	C502		MEASUREMENT DETAILS	C 1
R		6313	Measured attribute code	C an..3
			AAL <i>Net weight</i>	
			AAO <i>Humidity</i> Humidity setting in percentage	
			AAS <i>Air flow</i> Ventilation setting in cbm/hour	
			AAW <i>Gross volume</i>	
			ABJ <i>Volume</i>	
			AET <i>Transport equipment gross weight</i>	
			CD <i>Carbondioxide</i> Carbondioxide setting in percentage	
			Temporary code	
			G <i>Gross weight</i>	
			MW <i>Maximum weight</i>	
			T <i>Tare weight</i>	
			ZO <i>Oxygen</i> Oxygen setting in percentage	
			VGM <i>Transport equipment verified gross mass (weight)</i> Code as available from version D.15B: Transport equipment's gross mass (weight) verified according to SOLAS Chapter VI, Regulation 2, paragraphs 4-6	
X		6321	Measurement significance code	C an..3
X		6155	Non-discrete measurement name code	C an..17
X		6154	Non-discrete measurement name	C an..70
R	C174		VALUE/RANGE	C 1



M	6411	Measurement unit code	M	an..3
		<i>FTQ</i>		<i>Cubic Feet</i>
		<i>KGM</i>		<i>Kilograms</i>
		<i>LBR</i>		<i>Pounds</i>
		<i>MTQ</i>		<i>Cubic Metres</i>
		<i>PCT</i>		<i>Percentage</i>
R	6314	Measurement value	C	an..18
		<i>Weight, volume or percentage.</i>		
X	6162	Range minimum value	C	n..18
X	6152	Range maximum value	C	n..18
X	6432	Significant digits quantity	C	n..2
X	7383	SURFACE OR LAYER CODE	C	1 an..3



Segment: DIM Dimensions
Position: 0300
Group: Segment Group 6 (Equipment Details) Conditional (Required)
Level: 2
Usage: Conditional (Optional)
Max Use: 9
Purpose: A segment specifying physical dimensions related to the equipment, such as: - gross dimensions - off standard dimension general - off standard dimension left - off standard dimension right - off standard dimension back - off standard dimension front

Comments:

Notes: *Sample segment :*
DIM+13+CMT:::23'

Data Element Summary

	<u>Data Element</u>	<u>Component Element</u>	<u>Name</u>	<u>Attributes</u>
M	6145		DIMENSION TYPE CODE QUALIFIER	M 1 an..3
			1 <i>Gross dimensions</i>	
			To be used for break bulk only.	
			5 <i>Off-standard dimension front</i>	
			6 <i>Off-standard dimension back</i>	
			7 <i>Off-standard dimension right</i>	
			8 <i>Off-standard dimension left</i>	
			10 <i>External equipment dimension</i>	
			To be used for non-ISO equipment only	
			13 <i>Off-standard dimensions height</i>	
M	C211		DIMENSIONS	M 1
M		6411	Measurement unit code	M an..3
			CMT <i>Centimetres</i>	
			INH <i>Inches</i>	
D		6168	Length dimension value	C n..15
			<i>Overall length if e6145 = 1 or 10</i>	
			<i>Overlength if e6145 = 5 or 6</i>	
D		6140	Width dimension value	C n..15
			<i>Overall width if e6145 = 1 or 10</i>	
			<i>Overwidth if e6145 = 7 or 8</i>	
D		6008	Height dimension value	C n..15
			<i>Overall height if e6145 = 1 or 10</i>	
			<i>Overheight if e6145 = 13</i>	



Segment: **TMP** Temperature
Position: 0320 (Trigger Segment)
Group: Segment Group 8 (Temperature) Conditional (Optional)
Level: 2
Usage: Mandatory
Max Use: 1
Purpose: A segment which identifies the transport temperature setting of the container.
Comments:
Notes: *Sample segment :*
TMP+2+048:FAH'

Only to be used when a set temperature is to be specified. When a temperature range is to be specified, the RNG segment must be used.

Data Element Summary

	Data Component		Attributes
	<u>Element</u>	<u>Element Name</u>	
M	6245	TEMPERATURE TYPE CODE QUALIFIER 2 <i>Transport temperature</i>	M 1 an..3
R	C239	TEMPERATURE SETTING	C 1
R	6246	Temperature value <i>Temperature setting</i>	C n..15
R	6411	Measurement unit code CEL <i>Celsius</i> FAH <i>Fahrenheit</i>	C an..3



Segment: **RNG** Range Details
Position: 0330
Group: Segment Group 8 (Temperature) Conditional (Optional)
Level: 3
Usage: Conditional (Optional)
Max Use: 1
Purpose: A segment to specify the transport temperature range setting of the container.
Comments:
Notes: *Sample segment :*
RNG+5+FAH:46:50'

Only to be used when a temperature range is to be specified. When a set temperature is to be specified, the TMP segment must be used.

Data Element Summary

	<u>Data Element</u>	<u>Component Element</u>	<u>Name</u>	<u>Attributes</u>
M	6167		RANGE TYPE CODE QUALIFIER 5 <i>Temperature range</i>	M 1 an..3
R	C280		RANGE	C 1
M		6411	Measurement unit code CEL <i>Celsius</i> FAH <i>Fahrenheit</i>	M an..3
R		6162	Range minimum value <i>Minimum temperature</i>	C n..18
R		6152	Range maximum value <i>Maximum temperature</i>	C n..18



Segment: **SEL** Seal Number
Position: 0340
Group: Segment Group 6 (Equipment Details) Conditional (Required)
Level: 2
Usage: Conditional (Optional)
Max Use: 9
Purpose: A segment identifying a seal number related to the equipment.
Comments:
Notes: *Sample segment :*
SEL+NL5694359+CA:::MAERSK SEALAND+1'

Data Element Summary

	<u>Data Element</u>	<u>Component Element</u>	<u>Name</u>	<u>Attributes</u>
R	9308		SEAL IDENTIFIER <i>Seal number</i>	C 1 an..35
O	C215		SEAL ISSUER	C 1
R		9303	Sealing party name code AA <i>Consolidator</i> AB <i>Unknown</i> AC <i>Quarantine agency</i> CA <i>Carrier</i> CU <i>Customs</i> SH <i>Shipper</i> TO <i>Terminal operator</i>	C an..3
X		1131	Code list identification code	C an..17
X		3055	Code list responsible agency code	C an..3
O		9302	Sealing party name <i>Sealing party name (free text)</i>	C an..35
O	4517		SEAL CONDITION CODE 1 <i>In right condition</i> 2 <i>Damaged</i>	C 1 an..3
X	C208		IDENTITY NUMBER RANGE	C 1
X		7402	Object identifier	M an..35
X		7402	Object identifier	C an..35



Segment: **FTX** Free Text
Position: 0350
Group: Segment Group 6 (Equipment Details) Conditional (Required)
Level: 2
Usage: Conditional (Optional)
Max Use: 9
Purpose: A segment to specify supplementary information related to the equipment, such as: - blockade reason - government inspection service - container loading remarks - container remarks - container order information - additional remarks concerning the container - container safety convention plate - continuous examination program (ACEP)

Comments:

Notes: *Sample segment :*
FTX+AAA+++FLOWERBULBS'
FTX+OSI++040'

Data Element Summary

	<u>Data Element</u>	<u>Component Element</u>	<u>Name</u>	<u>Attributes</u>
M	4451		TEXT SUBJECT CODE QUALIFIER	M 1 an..3
			AAA <i>Goods description</i>	
			AAI <i>General information</i>	
			ABS <i>Additional conditions</i>	
			ACF <i>Additional attribute information</i>	
			ADZ <i>CSC (Container Safety Convention) plate information</i>	
			DAR <i>Damage remarks</i>	
			INV <i>Invoice instruction</i>	
			LOI <i>Loading instruction</i>	
			OSI <i>Other service information</i>	
			SIN <i>Special instructions</i>	
X	4453		FREE TEXT FUNCTION CODE	C 1 an..3
D	C107		TEXT REFERENCE	C 1
M		4441	Free text value code	M an..17

- REEFER SETTINGS (if e4451 = OSI):

CLS *Vents closed*
QUA *Vents one quarter open*
HLF *Vents half open*
THR *Vents three quarters open*
FLL *Vents fully open*
025 *Volume of air flow 25 cubic meters per hour*
etc.



		130	Special handling <i>If e4451 = INV</i>		
		ZZZ	Mutually defined <i>If e4451 = ACF, DAR or ABS</i>		
O		3055	Code list responsible agency code	C	an..3
		5	ISO (International Organization for Standardization) <i>If e4451 = ACF</i>		
		184	AU, ACOS (Australian Chamber of Shipping) <i>If e4451 = INV, DAR, ABS</i>		
		SMD	SMD (Ship planning Message Design Group) <i>If e4451 = ABS (SOLAS VGM)</i>		
D	C108		TEXT LITERAL	C	1
M		4440	Free text value	M	an..512
			- CSC PROBLEMS (if e4451 = CSC):		
			CSC re-inspection date (CCYMM) or ACEP (if there is an acceptance sticker) or NDAT (in all other cases)		
			- LOADING INSTRUCTION (if e4451 = LOI):		
			Free text		
			- GENERAL INFORMATION (if e4451 = AAI):		
			Free text		
			- DESCRIPTION OF GOODS (if e4451 = AAA):		
			Free text		
O		4440	Free text value	C	an..512
O		4440	Free text value	C	an..512
O		4440	Free text value	C	an..512
O		4440	Free text value	C	an..512
X	3453		LANGUAGE NAME CODE	C	1 an..3
X	4447		FREE TEXT FORMAT CODE	C	1 an..3



Segment: **DGS** Dangerous Goods
Position: 0380 (Trigger Segment)
Group: Segment Group 9 (Dangerous Goods) Conditional (Optional)
Level: 2
Usage: Mandatory
Max Use: 1
Purpose: A segment to identify the UN-number and the class of the dangerous goods loaded in the container.

Comments:

Notes: *Sample segment :*
DGS+IMD+3+2348+037:CEL+3+3-03'

Data Element Summary

	<u>Data Element</u>	<u>Component Element</u>	<u>Name</u>	<u>Attributes</u>
R	8273		DANGEROUS GOODS REGULATIONS CODE <i>IMD IMO IMDG code</i>	C 1 an..3
R	C205		HAZARD CODE	C 1
M		8351	Hazard identification code <i>IMDG class / sub-class number</i>	M an..7
O		8078	Additional hazard classification identifier <i>IMDG Code page number</i>	C an..7
O		8092	Hazard code version identifier <i>IMDG Code version number</i>	C an..10
O	C234		UNDG INFORMATION	C 1
R		7124	United Nations Dangerous Goods (UNDG) identifier <i>UNDG number</i>	C n4
X		7088	Dangerous goods flashpoint value	C an..8
O	C223		DANGEROUS GOODS SHIPMENT FLASHPOINT	C 1
R		7106	Shipment flashpoint value <i>Flashpoint temperature</i>	C n3
R		6411	Measurement unit code <i>CEL Celsius</i> <i>FAH Fahrenheit</i>	C an..3
O	8339		PACKAGING DANGER LEVEL CODE <i>1 Great danger</i> <i>2 Medium danger</i> <i>3 Minor danger</i> <i>Packing Group I</i> <i>Packing Group II</i> <i>Packing Group III</i>	C 1 an..3
O	8364		EMERGENCY PROCEDURE FOR SHIPS IDENTIFIER <i>EMS number</i>	C 1 an..6
O	8410		HAZARD MEDICAL FIRST AID GUIDE IDENTIFIER	C 1 an..4



		<i>MFAG number</i>		
O	8126	TRANSPORT EMERGENCY CARD IDENTIFIER <i>TREM card number</i>	C	1 an..10
O	C235	HAZARD IDENTIFICATION PLACARD DETAILS	C	1
O	8158	Orange hazard placard upper part identifier <i>Hazard identification number, upper part</i>	C	an..4
O	8186	Orange hazard placard lower part identifier <i>Hazard identification number, lower part (Substance identification number)</i>	C	an4
O	C236	DANGEROUS GOODS LABEL	C	1
R	8246	Dangerous goods marking identifier <i>Dangerous goods label marking 1</i>	C	an..4
O	8246	Dangerous goods marking identifier <i>Dangerous goods label marking 2</i>	C	an..4
O	8246	Dangerous goods marking identifier <i>Dangerous goods label marking 3</i>	C	an..4
X	8255	PACKING INSTRUCTION TYPE CODE	C	1 an..3
X	8325	HAZARDOUS MEANS OF TRANSPORT CATEGORY CODE	C	1 an..3
X	8211	HAZARDOUS CARGO TRANSPORT AUTHORISATION CODE	C	1 an..3



Segment: **FTX** Free Text
Position: 0390
Group: Segment Group 9 (Dangerous Goods) Conditional (Optional)
Level: 3
Usage: Conditional (Optional)
Max Use: 9
Purpose: A segment to give additional information regarding dangerous goods, such as : - dangerous goods technical name.

Comments:

Notes: *Sample segment :*
FTX+AAC++PP'
FTX+AAD+++BUTYL ACRYLATES, STABILIZED'

Data Element Summary

	<u>Data Element</u>	<u>Component Element</u>	<u>Name</u>	<u>Attributes</u>
M	4451		TEXT SUBJECT CODE QUALIFIER	M 1 an..3
			AAC Dangerous goods additional information	
			AAD Dangerous goods, technical name	
X	4453		FREE TEXT FUNCTION CODE	C 1 an..3
O	C107		TEXT REFERENCE	C 1
M		4441	Free text value code	M an..17
			<i>MARPOL details or indication of transport of dangerous goods in limited quantities (if 4451 = AAC).</i>	
			P Marine Pollutant	
			PP Severe Marine Pollutant	
			TLQ Transport of dangerous goods in limited quantities	
X		1131	Code list identification code	C an..17
X		3055	Code list responsible agency code	C an..3
O	C108		TEXT LITERAL	C 1
M		4440	Free text value	M an..512
			<i>Dangerous goods technical name (if e4451 = AAD)</i>	
			<i>Exterior placard label (if e4451 = AAC)</i>	
O		4440	Free text value	C an..512
O		4440	Free text value	C an..512
O		4440	Free text value	C an..512
O		4440	Free text value	C an..512
X	3453		LANGUAGE NAME CODE	C 1 an..3
X	4447		FREE TEXT FORMAT CODE	C 1 an..3



Segment: **EQA** Attached Equipment
Position: 0440
Group: Segment Group 6 (Equipment Details) Conditional (Required)
Level: 2
Usage: Conditional (Optional)
Max Use: 9
Purpose: A segment to identify clip-on units, such as: - generator sets
Comments:
Notes: *Sample segment :
 EQA+RG+MAEG110892'*

Data Element Summary

	<u>Data Element</u>	<u>Component Element</u>	<u>Name</u>	<u>Attributes</u>
M	8053		EQUIPMENT TYPE CODE QUALIFIER	M 1 an..3
			AB Chain	
			AD Temperature recorder	
			BL Blocks	
			BR Barge	
			CH Chassis	
			CN Container	
			FSU Forked support	
			LAR Lashing rope	
			RG Reefer generator	
			Clip-on	
			RR Rail car	
			STR Strap	
			TE Trailer	
			TP Tarpaulin	
O	C237		EQUIPMENT IDENTIFICATION	C 1
R		8260	Equipment identifier Equipment number	C an..17
X		1131	Code list identification code	C an..17
X		3055	Code list responsible agency code	C an..3
X		3207	Country name code	C an..3



Segment: **HAN** Handling Instructions
Position: 0470
Group: Segment Group 6 (Equipment Details) Conditional (Required)
Level: 2
Usage: Conditional (Optional)
Max Use: 9
Purpose: A segment to specify handling instructions related to the equipment.

Comments:

Notes: *Sample segment :*
HAN+RFR:130:184'

Data Element Summary

	<u>Data Element</u>	<u>Component Element</u>	<u>Name</u>	<u>Attributes</u>
R	C524		HANDLING INSTRUCTIONS	C 1
O		4079	Handling instruction description code <i>Code as per JM4/ITIGG/120</i>	C an..3
O		1131	Code list identification code <i>130 Special handling</i>	C an..17
O		3055	Code list responsible agency code <i>184 AU, ACOS (Australian Chamber of Shipping)</i>	C an..3
O		4078	Handling instruction description <i>Handling instruction (free text)</i>	C an..70
X	C218		HAZARDOUS MATERIAL	C 1
X		7419	Hazardous material category name code	C an..4
X		1131	Code list identification code	C an..17
X		3055	Code list responsible agency code	C an..3
X		7418	Hazardous material category name	C an..35



Segment: **DAM** Damage
Position: 0490 (Trigger Segment)
Group: Segment Group 11 (Damage) Conditional (Optional)
Level: 2
Usage: Mandatory
Max Use: 1
Purpose: A segment to specify equipment damages, such as the point of the damage on the equipment, and the type of damage.

Comments:

Notes: *Sample segment :*
DAM+1+04120::CUT+D::DOOR+10+06290::REMOVE AND REFIT'

Data Element Summary

	<u>Data Element</u>	<u>Component Element</u>	<u>Name</u>	<u>Attributes</u>
M	7493		DAMAGE DETAILS CODE QUALIFIER <i>1 Equipment damage</i>	M 1 an..3
O	C821		TYPE OF DAMAGE	C 1
R		7501	Damage type description code <i>Code as per ISO 9897, Annex D</i>	C an..3
X		1131	Code list identification code	C an..17
X		3055	Code list responsible agency code	C an..3
O		7500	Damage type description <i>Type of damage (free text)</i>	C an..35
O	C822		DAMAGE AREA	C 1
R		7503	Damage area description code <i>Code as per ISO 9897, Annex C</i>	C an..4
X		1131	Code list identification code	C an..17
X		3055	Code list responsible agency code	C an..3
O		7502	Damage area description <i>Damage area (free text)</i>	C an..35
O	C825		DAMAGE SEVERITY	C 1
R		7509	Damage severity description code <i>Code as per ISO 9897, Annex G.3</i>	C an..3
X		1131	Code list identification code	C an..17
X		3055	Code list responsible agency code	C an..3
O		7508	Damage severity description <i>Damage severity (free text)</i>	C an..35
O	C826		ACTION	C 1
R		1229	Action request/notification description code <i>Code as per ISO 9897, Annex F</i>	C an..3
X		1131	Code list identification code	C an..17
X		3055	Code list responsible agency code	C an..3
O		1228	Action request/notification description	C an..35



Action requested or taken (free text)



Segment: **COD** Component Details
Position: 0500
Group: Segment Group 11 (Damage) Conditional (Optional)
Level: 3
Usage: Conditional (Optional)
Max Use: 1
Purpose: A segment to specify component details of the damaged equipment.

Comments:

Notes: *Sample segment :*
COD+

Data Element Summary

	<u>Data Element</u>	<u>Component Element</u>	<u>Name</u>	<u>Attributes</u>
O	C823		TYPE OF UNIT/COMPONENT	C 1
R		7505	Unit or component type description code <i>Code as per ISO 9897, Annex K & L</i>	C an..3
X		1131	Code list identification code	C an..17
X		3055	Code list responsible agency code	C an..3
O		7504	Unit or component type description <i>Type of unit/component (free text)</i>	C an..35
O	C824		COMPONENT MATERIAL	C 1
R		7507	Component material description code <i>Code as per ISO 9897, Annex E</i>	C an..3
X		1131	Code list identification code	C an..17
X		3055	Code list responsible agency code	C an..3
O		7506	Component material description <i>Component material (free text)</i>	C an..35



Segment: **TDT** Details of Transport
Position: 0520 (Trigger Segment)
Group: Segment Group 12 (Details of Transport) Conditional (Optional)
Level: 2
Usage: Mandatory
Max Use: 1
Purpose: A segment to identify the pre-carriage or on-carriage transport details by which the container will arrive before being loaded or by which the container will depart after being discharged.

Comments:

Notes: *Sample segment :*
TDT+10++3+95+:::VERACHTERT B.V.+++BGHF36'

Data Element Summary

	<u>Data Element</u>	<u>Component Element</u>	<u>Name</u>	<u>Attributes</u>
M	8051		TRANSPORT STAGE CODE QUALIFIER	M 1 an..3
			1 Inland transport	
			10 Pre-carriage transport	
			30 On-carriage transport	
O	8028		MEANS OF TRANSPORT JOURNEY IDENTIFIER	C 1 an..17
			<i>Carrier's voyage number.</i>	
R	C220		MODE OF TRANSPORT	C 1
R		8067	Transport mode name code	C an..3
			1 Maritime Transport	
			2 Rail	
			3 Road	
			4 Air	
			8 Inland Water	
			9 Mode unknown	
X		8066	Transport mode name	C an..17
O	C228		TRANSPORT MEANS	C 1
O		8179	Transport means description code	C an..8
			<i>Means of transport code (UN/ECE recommendation 28)</i>	
O		8178	Transport means description	C an..17
			<i>Type of means of transport (free text)</i>	
O	C040		CARRIER	C 1
O		3127	Carrier identifier	C an..17
			<i>Carrier code</i>	
O		1131	Code list identification code	C an..17
			172 Carriers	
O		3055	Code list responsible agency code	C an..3
			20 BIC (Bureau International des Containeurs)	
			87 Assigned by carrier	



		166	US, National Motor Freight Classification Association		
		184	AU, ACOS (Australian Chamber of Shipping)		
		SMD	SMDG Shipplanning Message Development Group)		
			Temporary code		
		ZZZ	Mutually defined		
O		3128	Carrier name <i>Carrier name (free text)</i>	C	an..35
X	8101		TRANSIT DIRECTION INDICATOR CODE	C	1 an..3
X	C401		EXCESS TRANSPORTATION INFORMATION	C	1
X		8457	Excess transportation reason code	M	an..3
X		8459	Excess transportation responsibility code	M	an..3
X		7130	Customer shipment authorisation identifier	C	an..17
O	C222		TRANSPORT IDENTIFICATION	C	1
O		8213	Transport means identification name identifier <i>Call sign (if e8067 = 1 and C222/e1131 = 103)</i> <i>Lloyd's Number (if e8067 = 1 and C222/e1131 =146)</i> <i>Train ID (if e8067 = 2)</i> <i>Truck ID (if e8067 = 3)</i> <i>Air service ID (if e8067 = 4)</i> <i>Barge ID (if e8067 = 8)</i>	C	an..9
O		1131	Code list identification code 103 <i>Call sign directory</i> 146 <i>Means of transport identification</i>	C	an..17
O		3055	Code list responsible agency code 11 <i>Lloyd's register of shipping</i> ZZZ <i>Mutually defined</i>	C	an..3
O		8212	Transport means identification name <i>Vessel name or other means of transport name (free text)</i>	C	an..35
O		8453	Transport means nationality code <i>Flag of means of transport (ISO country code)</i>	C	an..3
X	8281		TRANSPORT MEANS OWNERSHIP INDICATOR CODE	C	1 an..3



Segment: **LOC** Place/Location Identification
Position: 0530
Group: Segment Group 12 (Details of Transport) Conditional (Optional)
Level: 3
Usage: Conditional (Optional)
Max Use: 9
Purpose: A segment identifying a location related to the pre-carriage or on-carriage transport details, such as: - place of departure

Comments:

Notes: *Sample segment :*
LOC+88+NLR TM:139:6:ROTTERDAM+DSM:262:ZZZ'

Data Element Summary

	<u>Data Element</u>	<u>Component Element</u>	<u>Name</u>	<u>Attributes</u>
M	3227		LOCATION FUNCTION CODE QUALIFIER	M 1 an..3
			7 <i>Place of delivery</i>	
			8 <i>Place of destination</i>	
			9 <i>Place/port of loading</i>	
			11 <i>Place/port of discharge</i>	
			13 <i>Place of transshipment</i>	
			88 <i>Place of receipt</i>	
			170 <i>Final port of discharge</i>	
			171 <i>Place of destination for pre-stacking prior to stowage</i>	
			175 <i>Activity location</i>	
R	C517		LOCATION IDENTIFICATION	C 1
O		3225	Location name code	C an..25
			UNLOCODE	
O		1131	Code list identification code	C an..17
			139 <i>Port</i>	
O		3055	Code list responsible agency code	C an..3
			6 <i>UN/ECE (United Nations - Economic Commission for Europe)</i>	
O		3224	Location name	C an..256
			<i>Place/port name (free text)</i>	
O	C519		RELATED LOCATION ONE IDENTIFICATION	C 1
O		3223	First related location name code	C an..25
			<i>1st related location code</i>	
O		1131	Code list identification code	C an..17
			72 <i>Container terminal</i>	
			261 <i>Consignee's premises</i>	
			262 <i>Consignor's premises</i>	



		263	<i>Packing and/or unpacking facility</i>		
		264	<i>Storage facility</i>		
		265	<i>Repair facility</i>		
		266	<i>Marine berth</i>		
		267	<i>Marine wharf</i>		
		268	<i>Gate</i>		
		269	<i>Warehouse</i>		
O		3055	Code list responsible agency code	C	an..3
		9	<i>EAN (International Article Numbering association)</i>		
		184	<i>AU, ACOS (Australian Chamber of Shipping)</i>		
		SMD	<i>SMDG (Shipplanning Message Development Group)</i>		
			Temporary code		
		ZZZ	<i>Mutually defined</i>		
O		3222	First related location name	C	an..70
			<i>1st related location name (free text)</i>		
O	C553		RELATED LOCATION TWO IDENTIFICATION	C	1
O		3233	Second related location name code	C	an..25
			<i>2nd related location code</i>		
O		1131	Code list identification code	C	an..17
		5	<i>Facility identification</i>		
		72	<i>Container terminal</i>		
		261	<i>Consignee's premises</i>		
		262	<i>Consignor's premises</i>		
		263	<i>Packing and/or unpacking facility</i>		
		264	<i>Storage facility</i>		
		265	<i>Repair facility</i>		
		266	<i>Marine berth</i>		
		267	<i>Marine wharf</i>		
		268	<i>Gate</i>		
		269	<i>Warehouse</i>		
O		3055	Code list responsible agency code	C	an..3
		9	<i>EAN (International Article Numbering association)</i>		
		184	<i>AU, ACOS (Australian Chamber of Shipping)</i>		
		SMD	<i>SMDG (Shipplanning Message Development Group)</i>		
			Temporary code		
		ZZZ	<i>Mutually defined</i>		
O		3232	Second related location name	C	an..70
			<i>2nd related location name (free text)</i>		
X	5479		RELATION CODE	C	1 an..3



Segment: **DTM** Date/Time/Period
Position: 0540
Group: Segment Group 12 (Details of Transport) Conditional (Optional)
Level: 3
Usage: Conditional (Optional)
Max Use: 9
Purpose: A segment to specify a date/time relating to the on- carriage location, such as arrival or departure date/time.

Comments:

Notes: *Sample segment :*
DTM+132:200211131700:203'

Data Element Summary

	<u>Data Element</u>	<u>Component Element</u>	<u>Name</u>	<u>Attributes</u>
M	C507		DATE/TIME/PERIOD	M 1
M		2005	Date or time or period function code qualifier	M an..3
			132 <i>Arrival date/time, estimated</i>	
			133 <i>Departure date/time, estimated</i>	
			178 <i>Arrival date/time, actual</i>	
			186 <i>Departure date/time, actual</i>	
R		2380	Date or time or period value	C an..35
			<i>Arrival/departure date/time</i>	
R		2379	Date or time or period format code	C an..3
			203 <i>CCYYMMDDHHMM</i>	



Segment: **NAD** Name and Address
Position: 0550
Group: Segment Group 6 (Equipment Details) Conditional (Required)
Level: 2
Usage: Conditional (Optional)
Max Use: 9
Purpose: A segment to specify a related address or party, such as: - container operator
Comments:
Notes: *Sample segment :*
NAD+CF+MAE:172:20'

Data Element Summary

	<u>Data Element</u>	<u>Component Element</u>	<u>Name</u>	<u>Attributes</u>
M	3035		PARTY FUNCTION CODE QUALIFIER	M 1 an..3
			CA Carrier	
			CB Customs broker	
			CF Container operator/lessee	
			CG Carrier's agent	
			CN Consignee	
			CZ Consignor	
			EQ Empty container responsible party	
			FP Freight/charges payer	
			GA Road carrier	
			GT Rail carrier	
			HR Shipping line service	
			IO Insurance company	
			JB Goods collection party	
			JC Party at final place of positioning	
			MF Manufacturer of goods	
			OG Owner or lessor's surveyor	
			OH Lessee's surveyor	
			ST Ship to	
			AM Authorized official – VGM EDI signature	
			Name in capitals of Authorized person signing for verified gross mass (weight) = EDI signature	
			SPC SOLAS packed container VGM responsible party	
			Code as available from version D.15B:	
			Party responsible for declaration of a packed container's verified gross mass (weight) according to SOLAS Chapter VI, Regulation 2, paragraphs 4-6	
O	C082		PARTY IDENTIFICATION DETAILS	C 1
M		3039	Party identifier	M an..35
			Company code	



O		1131	Code list identification code	C	an..17
		160	Party identification		
		172	Carriers		
O		3055	Code list responsible agency code	C	an..3
		7	CEFIC (Conseil Europeen des Federations de l'Industrie Chimique)		
		9	EAN (International Article Numbering association)		
		10	OJETTE		
		16	US, D&B (Dun & Bradstreet Corporation)		
		20	BIC (Bureau International des Containeurs)		
		87	Assigned by carrier		
		163	US, FMC (Federal Maritime Commission)		
		166	US, National Motor Freight Classification Association		
		184	AU, ACOS (Australian Chamber of Shipping)		
		SMD	SMDG (Shiplanning Message Development Group)		
			Temporary code		
		ZZZ	Mutually defined		
O	C058		NAME AND ADDRESS	C	1
			<i>The use of C058 is allowed to accommodate specific local requirements that exist in several ports. The use of C058 however is in general not recommended - whenever possible it is suggested to use C082 instead.</i>		
M		3124	Name and address description	M	an..35
O		3124	Name and address description	C	an..35
O		3124	Name and address description	C	an..35
O		3124	Name and address description	C	an..35
O		3124	Name and address description	C	an..35
O	C080		PARTY NAME	C	1
O		3036	Party name	M	an..35
			<i>1. Name in capitals of the person authorized to sign the shipping document declaring a verified gross mass (weight) (In case of qualifier 'AM') = EDI signature</i>		
			<i>2. Company name of SOLAS verified gross mass responsible party (in case of qualifier 'SPC') (optional occurrence 2) = Company of person signing for Verified Gross Mass</i>		
X		3036	Party name	C	an..35
X		3036	Party name	C	an..35
X		3036	Party name	C	an..35
X		3036	Party name	C	an..35
X		3045	Party name format code	C	an..3
O	C059		STREET	C	1
O		3042	Street and number or post office box identifier	M	an..35
X		3042	Street and number or post office box identifier	C	an..35



X		3042	Street and number or post office box identifier	C	an..35
X		3042	Street and number or post office box identifier	C	an..35
O	3164		CITY NAME	C	1 an..35
			<i>Verified Gross Mass (weight) obtained location</i>		
O	C819		COUNTRY SUB-ENTITY DETAILS	C	1
O		3229	Country sub-entity name code	C	an..9
O		1131	Code list identification code	C	an..17
O		3055	Code list responsible agency code	C	an..3
O		3228	Country sub-entity name	C	an..35
O	3251		POSTAL IDENTIFICATION CODE	C	1 an..17
O	3207		COUNTRY NAME CODE	C	1 an..3
			<i>Verified Gross Mass (weight) obtained country</i>		



Segment: **CNT** Control Total

Position: 0560

Group:

Level: 0

Usage: Conditional (Optional)

Max Use: 1

Purpose: A segment to specify the number of containers in the message, explicitly given by the sender.

Comments:

Notes: *Sample segment :*

CNT+1:1'

CNT+16:25'

Data Element Summary

	<u>Data Element</u>	<u>Component Element</u>	<u>Name</u>	<u>Attributes</u>
M	C270		CONTROL	M 1
M		6069	Control total type code qualifier 1 <i>Algebraic total of the quantity values in line items in a message</i> 16 <i>Total number of equipment</i>	M an..3
M		6066	Control total value <i>Dummy value 1 (if e6069 = 1)</i> <i>Number of EQD segments in the message (if e6069 = 16)</i>	M n..18
X		6411	Measurement unit code	C an..3



Segment: **UNT** Message Trailer
Position: 0570
Group:
Level: 0
Usage: Mandatory
Max Use: 1
Purpose: A service segment ending a message, giving the total number of segments in the message (including the UNH & UNT) and the control reference number of the message.
Comments:
Notes: *Sample segment :
UNT+32+ SN241445110001'*

Data Element Summary

	<u>Data Element</u>	<u>Component Element</u>	<u>Name</u>	<u>Attributes</u>
M	0074		NUMBER OF SEGMENTS IN A MESSAGE <i>Total number of segments in the message</i>	M 1 n..6
M	0062		MESSAGE REFERENCE NUMBER <i>Message reference identical to e0062 in UNH segment</i>	M 1 an..14



8. SAMPLE MESSAGE

UNH+SN241445110001+COARRI:D:00B:UN:SMDG21'
BGM+122+SN241445110001+9+AB'
DTM+137:200211150114:203'
RFF+AAY:58S/0220'
TDT+20+0220+1++MAE:172:20:MAERSK+++8212661:146:11:SL PRIDE:US'
RFF+VM:WDA3673'
LOC+9+NLRMT:139:6:ROTTERDAM+APMROT:72:SMD:APM TERMINALS+8200:266:ZZZ'
DTM+178:200211131700:203'
DTM+186:200211142300:203'
NAD+CF+MAE:172:20'
NAD+MS+APMRTM:160:ZZZ'
CTA+IC+:MARINE PLANNING'
COM+0181372420:TE'
EQD+CN+MAEU5174506+4532:102:5+2+2+5'
RFF+BN:ROT045683'
TMD+3++1'
DTM+404:200211150104:203'
LOC+11+USCHS:139:6:CHARLESTON, SC+WANDO:72:ZZZ:WANDO TERMINAL'
LOC+147+0500284'
MEA+AAE+VGM+KGM:28075'
MEA+AAE+T+KGM:3000'
MEA+AAE+AAO+PCT:65'
MEA+AAE+AAS+MTQ:40'
TMP+2+048:FAH'
SEL+NL5694359+CA:::MAERSK SEALAND+1'
SEL+78926358+SH'
EQA+RG+MAEG110892'
HAN+RFR:130:184'
TDT+10++3+95+:::VERACHTERT B.V.+++BGHF36'
LOC+88+NLRMT:139:6:ROTTERDAM'
CNT+16:1'
UNT+38+ SN241445110001'