



User Manual
(Implementation Guide)

UN/EDIFACT MESSAGE

COPARN
(Container Announcement)

Version 2.1 - 2

D.00B

| | |
|-----------|--|
| Version : | 2.1 - 2 |
| Date : | January 2016 |
| Source : | SMDG User Group for Shipping Lines and Container Terminals |



© SMDG

Information in this document is subject to change without notice.

The SMDG claims full copyright to this manual and its contents, however, the manual may be copied and used by anyone, without the consent of SMDG.

It is not allowed to change the contents of this manual!

Revision History

| Version | Date | Author(s) | Revision Notes |
|---------|--------------|-----------------|---|
| 2.0 | March 2003 | Karl Zlotkowski | Created version |
| 2.1 | August 2015 | Paul Wauters | Extended for Gross Weight Verification |
| 2.1-1 | October 2015 | Paul Wauters | Naming |
| 2.1-2 | January 2016 | Paul Wauters | Updated UNECE official codes/qualifiers |
| | | | |



CONTENTS

| | | |
|----|--|----|
| 0. | Introduction | 4 |
| 1. | General | 4 |
| 2. | Status Indicators and Usage Indicators.... | 5 |
| 3. | Document Maintenance..... | 6 |
| 4. | Versions | 7 |
| 5. | Segment Table | 8 |
| 6. | Message Structure Diagram | 10 |
| 7. | Message Description | 13 |
| 8. | Sample Message | 65 |



0. INTRODUCTION

This User Manual has been developed by the SMDG User Group for Shipping Lines and Container Terminals, a “Global User Group” under the auspices of UN/CEFACT.

This User Manual is based upon the UN/EDIFACT D.00B directory and the ITIGG documents “International Reference Guideline for the implementation of transport EDI messages – COPARN Container Announcement message”, version 1.4, dated March 1998 and “Principles and Rules for the implementation of transport EDI messages – Transport Equipment Movements – Maritime-related container messages”, version 1.3.1, dated September 1996.

This User Manual provides guidance as to the recommended usage of codes, qualifiers, data elements, composites, segments and groups of segments in the D.00B COPARN message. The intention is to assist developers to ensure consistent use of the COPARN message throughout the worldwide trade and transport community.

1. GENERAL

Formal Definition

“The message contains an order to release, to make available, to accept or to call down containers or to announce the impending arrival of containers. This message is part of a total set of container-related messages. These messages serve to facilitate the intermodal handling of containers by streamlining the information exchange. The business scenario for the container messages is clarified in a separate document, called “Guide to the scenario of EDIFACT container messages”.

The COPARN message is intended to perform a variety of instruction or request functions associated with equipment movements which are to occur at a future time, such as authorising release of an empty container for packing, or authorising acceptance of a container by a facility. Examples include:

- requesting or authorising acceptance of an empty return
- requesting or authorising acceptance of a full container
- releasing an empty container for packing
- requesting and authorising an on/off hire transaction



2. STATUS INDICATORS AND USAGE INDICATORS

Status Indicators

Status Indicators (“M” and “C”) form part of the UN/EDIFACT standard and indicate a minimum requirement to fulfil the needs of the message structure. They are not adequate for implementation purposes. The Status Indicators are :

| <i>Value</i> | <i>Description</i> |
|--------------|--|
| M | Mandatory The entity marked as such must appear in all messages, and apply to these messages as well as to any associated implementation guidelines (and consequently is also a Usage Indicator). |
| C | Conditional The entity is used by agreement between trading partners. |

Usage Indicators

Usage Indicators are implementation–related indicators that further detail the use of “Conditional” Status Indicators. Usage Indicators are applied at all levels of the guidelines and shown adjacent to data items such as segment groups, segments, composite data elements and simple data elements. They dictate the agreed usage of the data items or entities. The Usage Indicators are :

| <i>Value</i> | <i>Description</i> |
|--------------|---|
| M | Mandatory Indicates the item is mandatory in the UN/EDIFACT message. |
| R | Required Indicates the item must be transmitted in this implementation. |
| D | Dependent Indicates that the use of the item is depending on a well-defined condition or set of conditions. These conditions must be clearly specified in the relevant implementation guideline. |
| O | Optional Indicates that this item is at the need or discretion of both trading partners. |
| X | Not Used Indicates that this item is not to be used in this implementation. |

Where an item within a segment group, segment or composite data element is marked with Usage Indicators “M” or “R”, but the segment group, segment or composite data element has been marked “O” or “D” (or for that matter “X”), the item is only to be transmitted when the segment group, segment or composite of which it is a part, is used.



3. DOCUMENT MAINTENANCE

The data content of this document has been prepared and approved by SMDG and no alteration may be made to the content of this document without reference to and approval of SMDG.

Any remarks, questions, amendments or requested alterations to this document are to be addressed to :

SMDG Secretariat
Seattleweg 7
3195 ND Rotterdam – Pernis
The Netherlands

Phone: +31- (0)10 - 2941100
Fax: +31- (0)10 - 2941105
E-mail: secretariat@smdg.org
WWW www.smdg.org

Paul Wauters
c/o PSA Antwerp / Cosmos NV.
Napelsstraat 79
2000 Antwerp
Belgium

Phone: +32 – (0)3 2607056
Facsimile: +32 – (0)3 2606161
E-mail paul.wauters@globalpsa.com



4. VERSIONS

SMDG21.

Version 2.1, released October 2015, includes amendments for transmission of data specifying a container's verified gross mass (VGM) according to SOLAS regulation 2, chapter VI, paragraphs 4 to 6.

With a short deadline (July 2016) it was decided to do minimum changes - what was considered as an absolute (legal) minimum - to limit the impact on EDI and backend systems of different organizations. It was decided to make additions in the current version without structure changes via existing segments and data elements. Only necessary new qualifier and codes will be requested via DMR.

To handle the new SOLAS requirements on Gross Mass Verification, DMR (Data Maintenance Request) for new codes, to handle the new entities, will be submitted to UN/CEFACT.

The acceptance of these DMR's are available as from version D.15B The Message Implementation Guides can use 'Temporary' codes indicated between square brackets [xxx] and codes only available in a later version.

Changes for SOLAS in this manual: (codes used as available from UN/EDIFACT version D.15B or current directory.)

EQD group segments additions:

MEA – Measurements

D **VGM** – Verified Gross Mass (weight)

NAD – Name and Address

D **AM** – Authorized official – person signing for Verified Gross Mass

O **SPC** – SOLAS Packed Container Verified Gross Mass Responsible party

DTM – Date/Time

O **798** - Verified gross mass determination date/time - Date/Time when a gross mass (weight) of a packed container was obtained according to SOLAS chapter VI, regulation 2, paragraphs 4-6

FTX – Free text (ABS) container condition – SMDG maintained codes

O **SM1** – Solas Method 1 – Verified Gross Mass obtained by weighing

O **SM2** – Solas Method 2 – Verified Gross Mass obtained by calculation

RFF – References

O **VGR** – Verified Gross Mass Reference – link to VGM information

O **VOR** – Verified Gross Mass Order Reference – embedded instruction to obtain VGM

- *D* Dependency: Required if VGM is known



COPARN - Container Announcement Message

Introduction:

The message contains an order to release, to make available, to accept or to call down containers or to announce the impending arrival of containers.

This message is part of a total set of container-related messages. These messages serve to facilitate the intermodal handling of containers by streamlining the information exchange. The business scenario for the container messages is clarified in a separate document, called: 'Guide to the scenario of EDIFACT container messages'.

The order may pertain to cargo related containers (full container load and less than container load), the arrangement of empty containers prior to loading and after stripping, as well as the arrangements for leasing the empty containers (on- hire and off-hire of containers).

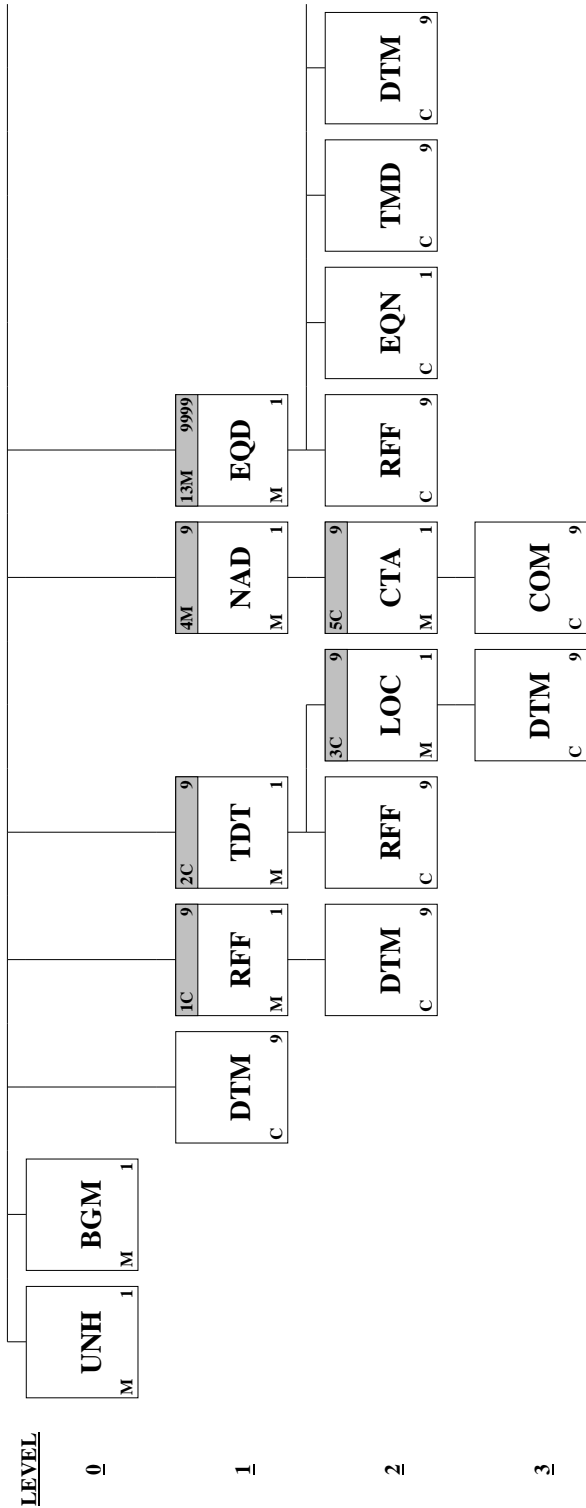
| | Pos. No. | Seg. ID | Name | Req. Des. | Max.Use | Group Repeat | Notes and Comments |
|---|-----------------|----------------|---|------------------|----------------|---------------------|---------------------------|
| M | 0010 | UNH | Message Header | M | 1 | | |
| M | 0020 | BGM | Beginning of Message | M | 1 | | |
| R | 0040 | DTM | Date/Time/Period | C | 9 | | |
| O | 0080 | | Segment Group 1: RFF-DTM | C | | 9 | |
| M | 0090 | RFF | Reference | M | 1 | | |
| O | 0100 | DTM | Date/Time/Period | C | 9 | | |
| O | 0110 | | Segment Group 2: TDT-RFF-SG3 | C | | 9 | |
| M | 0120 | TDT | Details of Transport | M | 1 | | |
| O | 0140 | RFF | Reference | C | 9 | | |
| O | 0150 | | Segment Group 3: LOC-DTM | C | | 9 | |
| M | 0160 | LOC | Place/Location Identification | M | 1 | | |
| O | 0170 | DTM | Date/Time/Period | C | 9 | | |
| M | 0180 | | Segment Group 4: NAD-SG5 | M | | 9 | |
| M | 0190 | NAD | Name and Address | M | 1 | | |
| O | 0200 | | Segment Group 5: CTA-COM | C | | 9 | |
| M | 0210 | CTA | Contact Information | M | 1 | | |
| O | 0220 | COM | Communication Contact | C | 9 | | |
| M | 0540 | | Segment Group 13: EQD-RFF-EQN-TMD-DTM-LOC-MEA-DIM-SG14-SEL-FTX-SG15-EQA-HAN-SG18-SG20 | M | | 9999 | |
| M | 0550 | EQD | Equipment Details | M | 1 | | |
| R | 0560 | RFF | Reference | C | 9 | | |
| O | 0570 | EQN | Number of Units | C | 1 | | |
| O | 0580 | TMD | Transport Movement Details | C | 9 | | |
| O | 0590 | DTM | Date/Time/Period | C | 9 | | |
| R | 0610 | LOC | Place/Location Identification | C | 9 | | |
| O | 0620 | MEA | Measurements | C | 9 | | |
| O | 0630 | DIM | Dimensions | C | 9 | | |



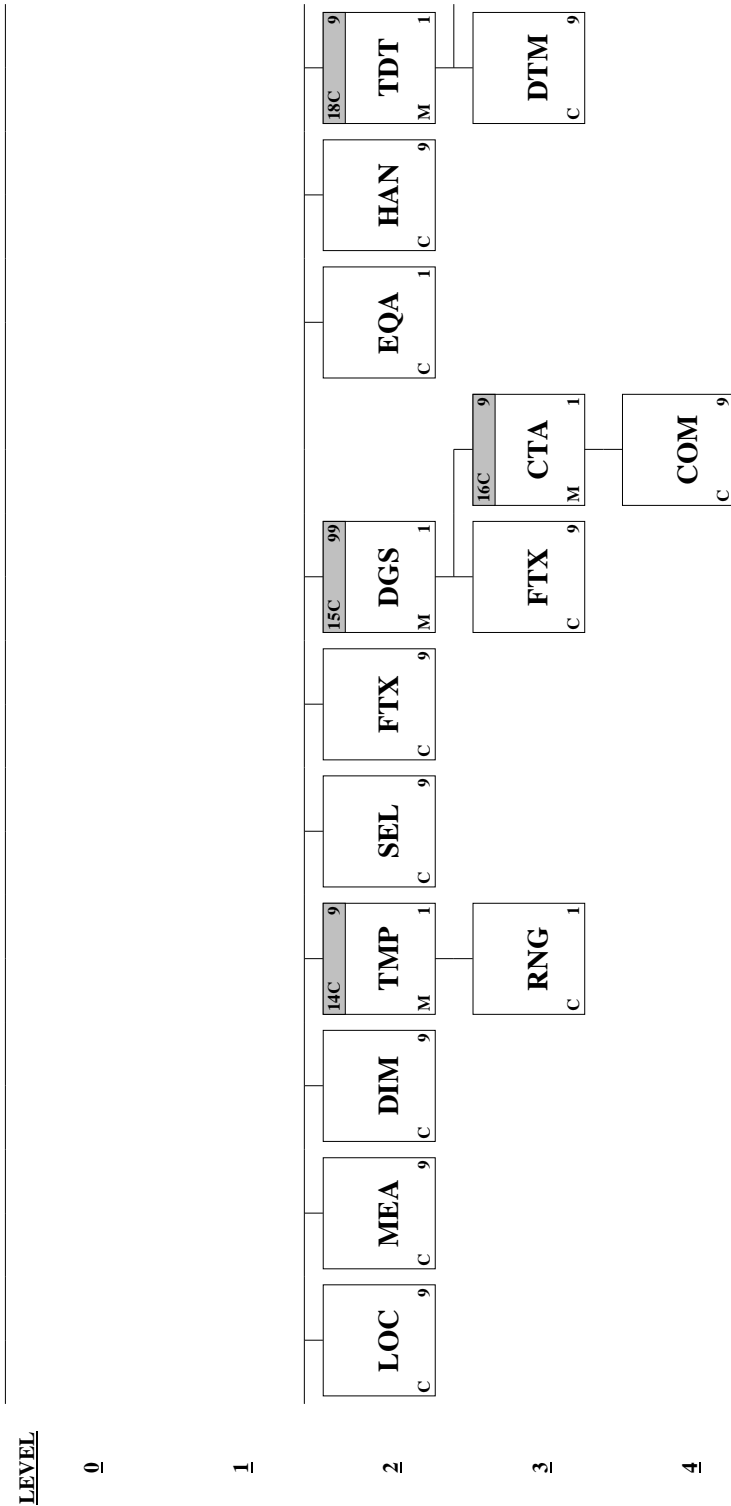
| | | | | | |
|---|------|-----|--------------------------------|---|----|
| O | 0640 | | Segment Group 14: TMP-RNG | C | 9 |
| M | 0650 | TMP | Temperature | M | 1 |
| O | 0660 | RNG | Range Details | C | 1 |
| O | 0670 | SEL | Seal Number | C | 9 |
| O | 0680 | FTX | Free Text | C | 9 |
| O | 0700 | | Segment Group 15: DGS-FTX-SG16 | C | 99 |
| M | 0710 | DGS | Dangerous Goods | M | 1 |
| O | 0720 | FTX | Free Text | C | 9 |
| O | 0740 | | Segment Group 16: CTA-COM | C | 9 |
| M | 0750 | CTA | Contact Information | M | 1 |
| O | 0760 | COM | Communication Contact | C | 9 |
| O | 0790 | EQA | Attached Equipment | C | 1 |
| O | 0810 | HAN | Handling Instructions | C | 9 |
| O | 0850 | | Segment Group 18: TDT-DTM-SG19 | C | 9 |
| M | 0860 | TDT | Details of Transport | M | 1 |
| O | 0870 | DTM | Date/Time/Period | C | 9 |
| R | 0880 | | Segment Group 19: LOC | C | 9 |
| M | 0890 | LOC | Place/Location Identification | M | 1 |
| O | 0910 | | Segment Group 20: NAD | C | 9 |
| M | 0920 | NAD | Name and Address | M | 1 |
| R | 0970 | CNT | Control Total | C | 1 |
| M | 0980 | UNT | Message Trailer | M | 1 |

Segments not used are not present in this list

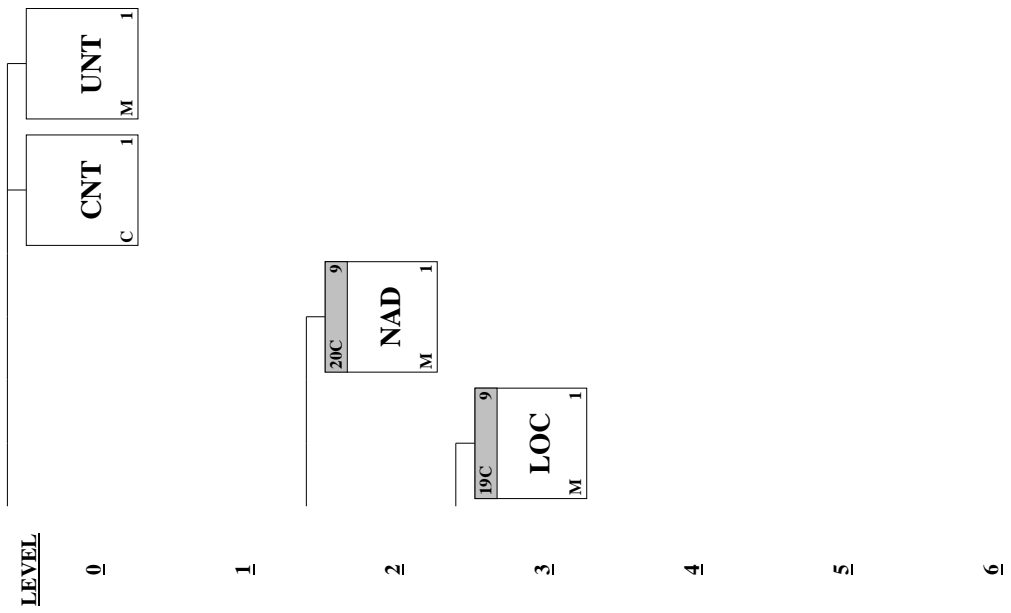
SMDG



SMDG



SMDG





Segment: UNH Message Header

Position: 0010

Group:

Level: 0

Usage: Mandatory

Max Use: 1

Purpose: A service segment starting and uniquely identifying a message. The message type code for the Container announcement message is COPARN.

Note: Container announcement messages conforming to this document must contain the following data in segment UNH, composite S009:

Data element 0065 COPARN 0052 D 0054 00B 0051 UN

Comments:

Notes: *Sample segment :*

UNH+0000000006944+COPARN:D:00B:UN:SMDG21'

Data Element Summary

| | <u>Data Element</u> | <u>Component Element</u> | <u>Name</u> | <u>Attributes</u> |
|---|---------------------|--------------------------|---|-------------------|
| M | 0062 | | MESSAGE REFERENCE NUMBER <i>Unique message reference assigned by the sender. This reference must also be transmitted in the UNT segment.</i> | M 1 an..14 |
| M | S009 | | MESSAGE IDENTIFIER | M 1 |
| M | | 0065 | Message type identifier <i>COPARN Container announcement message</i> | M an..6 |
| M | | 0052 | Message type version number <i>D Draft version/UN/EDIFACT Directory</i> | M an..3 |
| M | | 0054 | Message type release number <i>00B Release 2000 - B</i> | M an..3 |
| M | | 0051 | Controlling agency <i>UN UN/CEFACT</i> | M an..2 |
| R | | 0057 | Association assigned code <i>SMDG21 SMDG Version 2.1</i> | C an..6 |
| O | 0068 | | COMMON ACCESS REFERENCE <i>Additional message reference (if required)</i> | C 1 an..35 |
| X | S010 | | STATUS OF THE TRANSFER | C 1 |
| X | | 0070 | Sequence message transfer number | M n..2 |
| X | | 0073 | First/last sequence message transfer indication | C a1 |



Segment: **BGM** Beginning of Message
Position: 0020
Group:
Level: 0
Usage: Mandatory
Max Use: 1
Purpose: A segment to indicate the beginning of a message and to transmit identifying number and further specification of the message type (in data element 1001: Document name code), such as Empty container disposition order, Release order, Pre-arrival notice, Acceptance order, Empty container notice, Call-down order, On-hire request, On-hire order, Off-hire request, Off-hire notice.

Comments:

Notes: *Sample segment :*
BGM+126+800255846+9+AB'

Data Element Summary

| | <u>Data Element</u> | <u>Component Element</u> | <u>Name</u> | <u>Attributes</u> |
|---|---------------------|--------------------------|--|-------------------|
| R | C002 | | DOCUMENT/MESSAGE NAME | C 1 |
| R | | 1001 | Document name code | C an..3 |
| | | 104 | <i>Transport equipment impending arrival advice</i> | |
| | | 108 | <i>Transport equipment empty release instruction</i> | |
| | | 125 | <i>Transport empty equipment advice</i> | |
| | | 126 | <i>Transport equipment acceptance order</i> | |
| | | 127 | <i>Transport equipment special service instruction</i> | |
| | | 134 | <i>Transport equipment on-hire request</i> | |
| | | 135 | <i>Transport equipment on-hire order</i> | |
| | | 136 | <i>Transport equipment off-hire request</i> | |
| | | 144 | <i>Empty container disposition order</i> | |
| | | 170 | <i>Cargo acceptance order</i> | |
| | | 264 | <i>Transport equipment movement instruction</i> | |
| X | | 1131 | Code list identification code | C an..17 |
| X | | 3055 | Code list responsible agency code | C an..3 |
| X | | 1000 | Document name | C an..35 |
| R | C106 | | DOCUMENT/MESSAGE IDENTIFICATION | C 1 |
| R | | 1004 | Document identifier | C an..35 |
| | | | <i>Sender's unique reference number</i> | |
| X | | 1056 | Version identifier | C an..9 |
| X | | 1060 | Revision identifier | C an..6 |
| R | 1225 | | MESSAGE FUNCTION CODE | C 1 an..3 |
| | | | <i>If code 1 or 5 is used, reference number of the message which is being cancelled/replaced must appear in the header level RFF using the code ACW in e1153.</i> | |
| | | 1 | <i>Cancellation</i> | |



| | | | | | |
|----------|-------------|---------------------------|--------------------------------|----------|----------------|
| | | 5 | <i>Replace</i> | | |
| | | 9 | <i>Original</i> | | |
| O | 4343 | RESPONSE TYPE CODE | | C | 1 an..3 |
| | | <i>AB</i> | <i>Message acknowledgement</i> | | |



Segment: **DTM** Date/Time/Period
Position: 0040
Group:
Level: 1
Usage: Conditional (Required)
Max Use: 9
Purpose: A segment to indicate a date and time applying the message as a whole: - requested equipment positioning date and/or time - expected on-hire date and/or time - expected return period
Comments:
Notes: *Sample segment :*
DTM+137:200211211523:203'

Data Element Summary

| | <u>Data Element</u> | <u>Component Element</u> | <u>Name</u> | <u>Attributes</u> |
|---|---------------------|--------------------------|---|-------------------|
| M | C507 | | DATE/TIME/PERIOD | M 1 |
| M | | 2005 | Date or time or period function code qualifier <i>137 Document/message date/time</i> | M an..3 |
| R | | 2380 | Date or time or period value <i>Date/time that the message was prepared.</i> | C an..35 |
| R | | 2379 | Date or time or period format code <i>203 CCYYMMDDHHMM</i> | C an..3 |



Segment: **RFF** Reference
Position: 0090 (Trigger Segment)
Group: Segment Group 1 (Reference) Conditional (Optional)
Level: 1
Usage: Mandatory
Max Use: 1
Purpose: A segment to express a reference which applies to the entire message, such as: - container announcement reference number - booking reference number - reference to previous message - lessee's reference - lessor's reference - lease contract reference - return reference (of the party returning on hire equipment) - collect reference (of party collecting specified leased equipment) - carrier's agent reference number

Comments:

Notes: *Sample segment :*
RFF+ATX:800255846'

Data Element Summary

| | <u>Data Element</u> | <u>Component Element</u> | <u>Name</u> | <u>Attributes</u> |
|---|---------------------|--------------------------|---|--|
| M | C506 | | REFERENCE | M 1 |
| M | | 1153 | Reference code qualifier | M an..3 |
| | | | AAY | Carrier's agent reference number |
| | | | ACA | Cargo acceptance order reference number |
| | | | ACW | Reference number to previous message |
| | | | AKA | Container disposition order reference number |
| | | | ARJ | Personal identity card number |
| | | | ATX | Transport equipment acceptance order reference |
| | | | ATY | Transport equipment release order reference |
| | | | BM | Bill of lading number |
| | | | BN | Booking reference number |
| | | | CN | Carrier's reference number |
| | | | RE | Release number |
| R | | 1154 | Reference identifier <i>Reference number</i> | C an..70 |
| X | | 1156 | Document line identifier | C an..6 |
| X | | 4000 | Reference version identifier | C an..35 |
| X | | 1060 | Revision identifier | C an..6 |



Segment: **DTM** Date/Time/Period
Position: 0100
Group: Segment Group 1 (Reference) Conditional (Optional)
Level: 2
Usage: Conditional (Optional)
Max Use: 9
Purpose: A segment to indicate date and/or time related to the reference.

Comments:

Notes: *Sample segment :*
 DTM+36:200211301200:203'

Data Element Summary

| | <u>Data Element</u> | <u>Component Element</u> | <u>Name</u> | <u>Attributes</u> |
|---|---------------------|--------------------------|--|-------------------|
| M | C507 | | DATE/TIME/PERIOD | M 1 |
| M | | 2005 | Date or time or period function code qualifier | M an..3 |
| | | | 7 <i>Effective date/time</i> | |
| | | | 36 <i>Expiry date</i> | |
| | | | 203 <i>Execution date/time, requested</i> | |
| R | | 2380 | Date or time or period value | C an..35 |
| | | | <i>Date or date/time</i> | |
| R | | 2379 | Date or time or period format code | C an..3 |
| | | | 102 <i>CCYMMDD</i> | |
| | | | 203 <i>CCYMMDDHHMM</i> | |



Segment: **TDT** Details of Transport
Position: 0120 (Trigger Segment)
Group: Segment Group 2 (Details of Transport) Conditional (Optional)
Level: 1
Usage: Mandatory
Max Use: 1
Purpose: A segment to indicate information related to the main carriage stage of the transport (sea), such as voyage number or indication sea transport, vessel and carrier or liner. Information on related inland transport stage(s) can also be included, such as mode of inland transport, means of transport, and inland carrier, such as: - main-carriage transport (sea) - pre- or on-carriage transport - second pre- or on-carriage transport

Comments:

Notes: *Sample segment :*
TDT+20+048R+1++MSC:172:SMD+++7104673:146:11:MSC CLAUDIA:PA'

Data Element Summary

| | <u>Data Element</u> | <u>Component Element</u> | <u>Name</u> | <u>Attributes</u> |
|---|---------------------|--------------------------|---|-------------------|
| M | 8051 | | TRANSPORT STAGE CODE QUALIFIER 20 Main-carriage transport | M 1 an..3 |
| O | 8028 | | MEANS OF TRANSPORT JOURNEY IDENTIFIER Vessel operator's voyage number | C 1 an..17 |
| R | C220 | | MODE OF TRANSPORT | C 1 |
| R | | 8067 | Transport mode name code 1 Maritime transport (ocean) | C an..3 |
| X | | 8066 | Transport mode name | C an..17 |
| O | C228 | | TRANSPORT MEANS | C 1 |
| O | | 8179 | Transport means description code Means of transport code (UN/ECE Recommendation 28) | C an..8 |
| O | | 8178 | Transport means description Type of means of transport (free text) | C an..17 |
| R | C040 | | CARRIER | C 1 |
| R | | 3127 | Carrier identifier Vessel operator's code | C an..17 |
| O | | 1131 | Code list identification code 172 Carriers | C an..17 |
| O | | 3055 | Code list responsible agency code 20 BIC (Bureau International des Containeurs) 87 Assigned by carrier 166 US, National Motor Freight Classification Association 184 AU, ACOS (Australian Chamber of Shipping) SMD SMDG (Shipplanning Message Development Group) | C an..3 |



| | | <i>Temporary code</i> | | | |
|--|------|-----------------------|--|---|---------|
| | | <i>ZZZ</i> | <i>Mutually defined</i> | | |
| O | | 3128 | Carrier name <i>Vessel operator's name (free text)</i> | C | an..35 |
| X | 8101 | | TRANSIT DIRECTION INDICATOR CODE | C | 1 an..3 |
| X | C401 | | EXCESS TRANSPORTATION INFORMATION | C | 1 |
| X | | 8457 | Excess transportation reason code | M | an..3 |
| X | | 8459 | Excess transportation responsibility code | M | an..3 |
| X | | 7130 | Customer shipment authorisation identifier | C | an..17 |
| O | C222 | | TRANSPORT IDENTIFICATION | C | 1 |
| O | | 8213 | Transport means identification name identifier <i>Lloyd's (IMO) number</i> | C | an..9 |
| <i>Either this element or the Group 2 RFF must be used to specify a vessel id.</i> | | | | | |
| O | | 1131 | Code list identification code <i>146 Means of transport identification</i> | C | an..17 |
| O | | 3055 | Code list responsible agency code <i>11 Lloyd's register of shipping</i> | C | an..3 |
| O | | 8212 | Transport means identification name <i>Vessel name (free text)</i> | C | an..35 |
| O | | 8453 | Transport means nationality code <i>Flag of means of transport (ISO country code)</i> | C | an..3 |
| X | 8281 | | TRANSPORT MEANS OWNERSHIP INDICATOR CODE | C | 1 an..3 |



Segment: **RFF** Reference
Position: 0140
Group: Segment Group 2 (Details of Transport) Conditional (Optional)
Level: 2
Usage: Conditional (Optional)
Max Use: 9
Purpose: A segment to provide a reference for the liner service, such as: - conference - marketing organization - syndicate - vessel sharing agreement

Comments:

Notes: *Sample segment :*
RFF+VM:3EQZ6'

Data Element Summary

| | <u>Data Element</u> | <u>Component Element</u> | <u>Name</u> | <u>Attributes</u> |
|---|---------------------|--------------------------|---|-------------------|
| M | C506 | | REFERENCE | M 1 |
| M | | 1153 | Reference code qualifier | M an..3 |
| | | | ATZ Ship's stay reference number | |
| | | | MA Ship notice/manifest number | |
| | | | VM Vessel identification | |
| | | | VON Voyage number | |
| R | | 1154 | Reference identifier | C an..70 |
| | | | <i>Callsign (if C506.e1153 = 'VM')</i> | |
| | | | <i>Alternative (non vessel operator's) voyage number (if C506.e1153 = 'VON')</i> | |
| | | | <i>Manifest number (if C506.e1153 = 'MA')</i> | |
| | | | <i>Other reference (if C506.e1153 = 'ATZ')</i> | |
| X | | 1156 | Document line identifier | C an..6 |
| X | | 4000 | Reference version identifier | C an..35 |
| X | | 1060 | Revision identifier | C an..6 |



Segment: **LOC** Place/Location Identification
Position: 0160 (Trigger Segment)
Group: Segment Group 3 (Place/Location Identification) Conditional (Optional)
Level: 2
Usage: Mandatory
Max Use: 1
Purpose: A segment to specify a location associated with a transport stage such as final port or place of discharge or loading.

Comments:

Notes: *Sample segment :*
LOC+9+AUMEL:139:6:MELBOURNE+CONWS:72:SMD:P&O PORTS'

Data Element Summary

| | <u>Data Element</u> | <u>Component Element</u> | <u>Name</u> | <u>Attributes</u> |
|---|---------------------|--------------------------|--|-------------------|
| M | 3227 | | LOCATION FUNCTION CODE QUALIFIER | M 1 an..3 |
| | | | 9 Place/port of loading | |
| | | | 11 Place/port of discharge | |
| R | C517 | | LOCATION IDENTIFICATION | C 1 |
| O | | 3225 | Location name code | C an..25 |
| | | | UNLOCODE | |
| O | | 1131 | Code list identification code | C an..17 |
| | | | 139 Port | |
| O | | 3055 | Code list responsible agency code | C an..3 |
| | | | 6 UN/ECE (United Nations - Economic Commission for Europe) | |
| O | | 3224 | Location name | C an..256 |
| | | | <i>Port name (free text)</i> | |
| O | C519 | | RELATED LOCATION ONE IDENTIFICATION | C 1 |
| O | | 3223 | First related location name code | C an..25 |
| | | | <i>1st related location code</i> | |
| O | | 1131 | Code list identification code | C an..17 |
| | | | 72 Container terminal | |
| | | | 266 Marine berth | |
| | | | 267 Marine wharf | |
| O | | 3055 | Code list responsible agency code | C an..3 |
| | | | 9 EAN (International Article Numbering association) | |
| | | | 184 AU, ACOS (Australian Chamber of Shipping) | |
| | | | SMD SMDG (Shipplanning Message Development Group) | |
| | | | Temporary code | |
| | | | ZZZ Mutually defined | |
| O | | 3222 | First related location name | C an..70 |
| | | | <i>1st related location name (free text)</i> | |
| O | C553 | | RELATED LOCATION TWO IDENTIFICATION | C 1 |



| | | | | | |
|---|------|------|---|---|---------|
| O | | 3233 | Second related location name code <i>2nd related location code</i> | C | an..25 |
| O | | 1131 | Code list identification code 72 Container terminal 266 Marine berth 267 Marine wharf | C | an..17 |
| O | | 3055 | Code list responsible agency code 9 EAN (International Article Numbering association) 184 AU, ACOS (Australian Chamber of Shipping) SMD SMDG (Shipplanning Message Development Group) Temporary code ZZZ Mutually defined | C | an..3 |
| O | | 3232 | Second related location name <i>2nd related location name (free text)</i> | C | an..70 |
| X | 5479 | | RELATION CODE | C | 1 an..3 |



Segment: **DTM** Date/Time/Period
Position: 0170
Group: Segment Group 3 (Place/Location Identification) Conditional (Optional)
Level: 3
Usage: Conditional (Optional)
Max Use: 9
Purpose: A segment to specify date(s) and time(s) related to a location.

Comments:

Notes: *Sample segment :*
DTM+132:200212290600:203'

Data Element Summary

| | <u>Data Element</u> | <u>Component Element</u> | <u>Name</u> | <u>Attributes</u> |
|---|---------------------|--------------------------|--|-------------------|
| M | C507 | | DATE/TIME/PERIOD | M 1 |
| M | | 2005 | Date or time or period function code qualifier | M an..3 |
| | | | 132 <i>Arrival date/time, estimated</i> | |
| | | | 133 <i>Departure date/time, estimated</i> | |
| | | | 178 <i>Arrival date/time, actual</i> | |
| | | | 186 <i>Departure date/time, actual</i> | |
| R | | 2380 | Date or time or period value | C an..35 |
| | | | <i>Arrival/departure date/time</i> | |
| R | | 2379 | Date or time or period format code | C an..3 |
| | | | 203 <i>CCYYMMDDHHMM</i> | |



Segment: **NAD** Name and Address
Position: 0190 (Trigger Segment)
Group: Segment Group 4 (Name and Address) Mandatory
Level: 1
Usage: Mandatory
Max Use: 1
Purpose: A segment to identify the party's name and address, and function, and other addresses, such as: - ordering customer - ordering customer agent - message recipient - message sender - place of positioning - place of collection - final place of positioning - carrier agent (sea) - charges payer - place of acceptance name and address - invoicee - stripping address - return address - on hire party direct interchange - off hire party direct interchange - container survey agency

Comments:

Notes: *Sample segment :*
NAD+MS+PON:172:20'

Data Element Summary

| | <u>Data Element</u> | <u>Component Element</u> | <u>Name</u> | <u>Attributes</u> |
|---|---------------------|--------------------------|--|-------------------|
| M | 3035 | | PARTY FUNCTION CODE QUALIFIER | M 1 an..3 |
| | | | CA Carrier | |
| | | | CB Customs broker | |
| | | | CF Container operator/lessee | |
| | | | CPD Charges payer at destination | |
| | | | FW Freight forwarder | |
| | | | HA Party which delivers consignments to the terminal | |
| | | | HR Shipping line service | |
| | | | MR Message recipient | |
| | | | MS Document/message issuer/sender | |
| | | | OY Ordering customer | |
| | | | Delivery subcontractor | |
| O | C082 | | PARTY IDENTIFICATION DETAILS | C 1 |
| M | | 3039 | Party identifier | M an..35 |
| | | | Company code | |
| O | | 1131 | Code list identification code | C an..17 |
| | | | 160 Party identification | |
| | | | 172 Carriers | |
| O | | 3055 | Code list responsible agency code | C an..3 |
| | | | 7 CEFIC (Conseil Europeen des Federations de l'Industrie Chimique) | |
| | | | 9 EAN (International Article Numbering association) | |
| | | | 10 ODETE | |



| | | | | | |
|---|------|------|---|---|----------|
| | | 16 | US, D&B (Dun & Bradstreet Corporation) | | |
| | | 20 | BIC (Bureau International des Containeurs) | | |
| | | 87 | Assigned by carrier | | |
| | | 163 | US, FMC (Federal Maritime Commission) | | |
| | | 166 | US, National Motor Freight Classification Association | | |
| | | 184 | AU, ACOS (Australian Chamber of Shipping) | | |
| | | SMD | SMDG (Shipplanning Message Design Group) | | |
| | | | Temporary code | | |
| | | ZZZ | Mutually defined | | |
| O | C058 | | NAME AND ADDRESS | C | 1 |
| | | | <i>The use of C058 is allowed to accomodate specific local requirements that exist in several ports. The use of C058 however is in general not recommended - whenever possible it is suggested to use C082 instead.</i> | | |
| M | | 3124 | Name and address description | M | an..35 |
| O | | 3124 | Name and address description | C | an..35 |
| O | | 3124 | Name and address description | C | an..35 |
| O | | 3124 | Name and address description | C | an..35 |
| O | | 3124 | Name and address description | C | an..35 |
| X | C080 | | PARTY NAME | C | 1 |
| X | | 3036 | Party name | M | an..35 |
| X | | 3036 | Party name | C | an..35 |
| X | | 3036 | Party name | C | an..35 |
| X | | 3036 | Party name | C | an..35 |
| X | | 3036 | Party name | C | an..35 |
| X | | 3045 | Party name format code | C | an..3 |
| X | C059 | | STREET | C | 1 |
| X | | 3042 | Street and number or post office box identifier | M | an..35 |
| X | | 3042 | Street and number or post office box identifier | C | an..35 |
| X | | 3042 | Street and number or post office box identifier | C | an..35 |
| X | | 3042 | Street and number or post office box identifier | C | an..35 |
| X | 3164 | | CITY NAME | C | 1 an..35 |
| X | C819 | | COUNTRY SUB-ENTITY DETAILS | C | 1 |
| X | | 3229 | Country sub-entity name code | C | an..9 |
| X | | 1131 | Code list identification code | C | an..17 |
| X | | 3055 | Code list responsible agency code | C | an..3 |
| X | | 3228 | Country sub-entity name | C | an..35 |
| X | 3251 | | POSTAL IDENTIFICATION CODE | C | 1 an..17 |
| X | 3207 | | COUNTRY NAME CODE | C | 1 an..3 |



Segment: **CTA** Contact Information
Position: 0210 (Trigger Segment)
Group: Segment Group 5 (Contact Information) Conditional (Optional)
Level: 2
Usage: Mandatory
Max Use: 1
Purpose: A segment to identify a person or department of a message sender and/or message recipient, such as: - information contact
Comments:
Notes: *Sample segment :*
CTA+IC+:STAN MATTHEWS'

Data Element Summary

| | <u>Data Element</u> | <u>Component Element</u> | <u>Name</u> | <u>Attributes</u> |
|---|---------------------|--------------------------|---|-------------------|
| R | 3139 | | CONTACT FUNCTION CODE <i>IC Information contact</i> | C 1 an..3 |
| R | C056 | | DEPARTMENT OR EMPLOYEE DETAILS | C 1 |
| X | | 3413 | <i>Department or employee name code</i> | C an..17 |
| R | | 3412 | Department or employee name <i>Contact name</i> | C an..35 |



Segment: **COM** Communication Contact
Position: 0220
Group: Segment Group 5 (Contact Information) Conditional (Optional)
Level: 3
Usage: Conditional (Optional)
Max Use: 9
Purpose: A segment to identify a communication number of a person or department to whom communication should be directed.

Comments:

Notes: *Sample segment :*
COM+0198562395:TE'

Data Element Summary

| | <u>Data Element</u> | <u>Component Element</u> | <u>Name</u> | <u>Attributes</u> |
|---|---------------------|--------------------------|---|-------------------|
| M | C076 | | COMMUNICATION CONTACT | M 3 |
| M | | 3148 | Communication address identifier <i>Contact number</i> | M an..512 |
| M | | 3155 | Communication address code qualifier <i>EM Electronic mail</i> <i>FX Telefax</i> <i>TE Telephone</i> <i>TL Telex</i> <i>XF X.400 address</i> | M an..3 |



Segment: EQD Equipment Details
Position: 0550 (Trigger Segment)
Group: Segment Group 13 (Equipment Details) Mandatory
Level: 1
Usage: Mandatory
Max Use: 1
Purpose: A segment to specify a container, container size and type, and full/empty indication; also to specify the type of rail car on which a related container is transported.

Comments:

Notes: *Sample segment :*
 EQD+CN++4532:102:5+2+2+5'

Data Element Summary

| | <u>Data Element</u> | <u>Component Element</u> | <u>Name</u> | <u>Attributes</u> |
|---|---------------------|--------------------------|--|-------------------|
| M | 8053 | | EQUIPMENT TYPE CODE QUALIFIER | M 1 an..3 |
| | | | BB Break bulk <i>Temporary code</i> | |
| | | | BPP Truck and trailer combination being transported | |
| | | | CH Chassis | |
| | | | CN Container | |
| | | | RG Reefer generator <i>Power pack</i> | |
| | | | SW Swap body | |
| | | | TE Trailer | |
| O | C237 | | EQUIPMENT IDENTIFICATION | C 1 |
| R | | 8260 | Equipment identifier | C an..17 |
| | | | <i>Marks (letters/numbers) identifying equipment. To be transmitted as they appear on the equipment.</i> | |
| X | | 1131 | Code list identification code | C an..17 |
| X | | 3055 | Code list responsible agency code | C an..3 |
| X | | 3207 | Country name code | C an..3 |
| D | C224 | | EQUIPMENT SIZE AND TYPE | C 1 |
| O | | 8155 | Equipment size and type description code | C an..10 |
| | | | <i>Equipment size/type code as per ISO6346 (.1 or.2, .2 preferred)</i> | |
| O | | 1131 | Code list identification code | C an..17 |
| | | | 102 Size and type | |
| O | | 3055 | Code list responsible agency code | C an..3 |
| | | | 5 ISO (International Organization for Standardization) | |
| O | | 8154 | Equipment size and type description | C an..35 |
| | | | <i>Equipment size/type (free text)</i> | |
| O | 8077 | | EQUIPMENT SUPPLIER CODE | C 1 an..3 |
| | | | 1 Shipper supplied | |



| | | | | | |
|----------|-------------|-------------------------------------|--|----------|----------------|
| | | 2 | <i>Carrier supplied</i> | | |
| | | 5 | <i>Third party supplied</i> | | |
| O | 8249 | EQUIPMENT STATUS CODE | | C | 1 an..3 |
| | | 1 | <i>Continental</i> | | |
| | | 2 | <i>Export</i> | | |
| | | 3 | <i>Import</i> | | |
| | | 6 | <i>Transshipment</i> | | |
| | | 10 | <i>Positioning</i> | | |
| | | 11 | <i>Delivery</i> | | |
| | | 12 | <i>Redelivery</i> | | |
| | | 13 | <i>Repair</i> | | |
| R | 8169 | FULL OR EMPTY INDICATOR CODE | | C | 1 an..3 |
| | | 4 | <i>Empty</i> | | |
| | | 5 | <i>Full</i> | | |
| | | 6 | <i>No volume available</i> | | |
| | | | <i>To be used in case of break bulk</i> | | |



Segment: **RFF** Reference
Position: 0560
Group: Segment Group 13 (Equipment Details) Mandatory
Level: 2
Usage: Conditional (Required)
Max Use: 9
Purpose: A segment to express a reference which applies to the particular container, such as: - container sequence number - lower equipment serial number of range - upper equipment serial number of range - referring sequence number - reference at place of positioning - reference at place of collection - related container announcement reference (reference to Empty container disposition order) - transport costs reference number - carrier agent's reference number - freight forwarder's reference

Comments:

Notes: *Sample segment :*
RFF+SQ:1'

Data Element Summary

| | <u>Data Element</u> | <u>Component Element</u> | <u>Name</u> | <u>Attributes</u> |
|---|---------------------|--------------------------|--------------------------|--|
| M | C506 | | REFERENCE | M 1 |
| M | | 1153 | Reference code qualifier | M an..3 |
| | | | AAE | Goods declaration number |
| | | | AAO | Consignee's shipment reference number |
| | | | AAY | Carrier's agent reference number |
| | | | ABT | Customs declaration number |
| | | | ABZ | Vehicle licence number |
| | | | ACD | Additional reference number |
| | | | AHI | Transport contract reference number |
| | | | AKB | Container prefix |
| | | | AKG | Vehicle Identification Number (VIN) |
| | | | AKW | Transport costs reference number |
| | | | ARJ | Personal identity card number |
| | | | ATW | Flat rack container bundle identification number |
| | | | AUA | Place of positioning reference |
| | | | BM | Bill of lading number |
| | | | BN | Booking reference number |
| | | | BST | Blockstow reference |
| | | | Temporary code | |
| | | | BT | Batch number/lot number |
| | | | CN | Carrier's reference number |
| | | | CT | Contract number |
| | | | CU | Consignor's reference number |
| | | | CV | Container operators reference number |



| | | | | | |
|---|------|------------------------------|---|---|--------|
| | | DR | Dock receipt number | | |
| | | EQ | Equipment number | | |
| | | | To be used in the event that an alternative equipment number is to be quoted in addition to the number in the EQD | | |
| | | ER | Container/equipment receipt number | | |
| | | MKS | Marks and numbers | | |
| | | RE | Release number | | |
| | | SQ | Equipment sequence number | | |
| | | TF | Transfer number | | |
| | | UCN | Unique consignment reference number | | |
| | | VN | Order number (vendor) | | |
| | | VT | Motor vehicle identification number | | |
| O | | VGR | Transport equipment gross mass verification reference number | | |
| | | | Code as available from version D.15B: Identification reference to documentation of transport equipment gross mass (weight) verification | | |
| O | | VOR | Transport equipment gross mass verification order reference number | | |
| | | | Code as available from version D.15B: A specific Transport equipment gross mass (weight) verification order send by the customer/shipping line (e.g. response to COHAOR) | | |
| R | 1154 | Reference identifier | | C | an..70 |
| | | Reference number | | | |
| X | 1156 | Document line identifier | | C | an..6 |
| X | 4000 | Reference version identifier | | C | an..35 |
| X | 1060 | Revision identifier | | C | an..6 |



Segment: **EQN** Number of Units
Position: 0570
Group: Segment Group 13 (Equipment Details) Mandatory
Level: 2
Usage: Conditional (Optional)
Max Use: 1
Purpose: A segment to specify the number of containers of the same size and type in case of equipment guidelines.
Comments:
Notes: *Sample segment :*
EQN+1'

Data Element Summary

| | <u>Data Element</u> | <u>Component Element</u> | <u>Name</u> | <u>Attributes</u> |
|---|---------------------|--------------------------|--|-------------------|
| M | C523 | | NUMBER OF UNIT DETAILS | M 1 |
| R | | 6350 | Units quantity <i>Number of units</i> | C n..15 |
| X | | 6353 | Unit type code qualifier | C an..3 |



Segment: **TMD** Transport Movement Details
Position: 0580
Group: Segment Group 13 (Equipment Details) Mandatory
Level: 2
Usage: Conditional (Optional)
Max Use: 9
Purpose: A segment to indicate a Full Container Load (FCL) or a Less than Full Container Load (LCL).

Comments:
Notes: *Sample segment :*
TMD+3++2'

Data Element Summary

| | <u>Data Element</u> | <u>Component Element</u> | <u>Name</u> | <u>Attributes</u> |
|---|---------------------|--------------------------|------------------------------------|-------------------|
| R | C219 | | MOVEMENT TYPE | C 1 |
| R | | 8335 | Movement type description code | C an..3 |
| | | | 2 LCL/LCL = Pier/Pier = CFS/CFS | |
| | | | 3 FCL/FCL = House/House = CY/CY | |
| | | | 4 FCL/LCL = House/Pier = CY/CFS | |
| | | | 5 LCL/FCL = Pier/House = CFS/CY | |
| X | | 8334 | Movement type description | C an..35 |
| X | 8332 | | EQUIPMENT PLAN DESCRIPTION | C 1 an..26 |
| O | 8341 | | HAULAGE ARRANGEMENTS CODE | C 1 an..3 |
| | | | 1 Carrier | |
| | | | 2 Merchant | |



Segment: **DTM** Date/Time/Period
Position: 0590
Group: Segment Group 13 (Equipment Details) Mandatory
Level: 2
Usage: Conditional (Optional)
Max Use: 9
Purpose: A segment to indicate a date and time relating to the container, such as: - estimated positioning date/time - ultimate release date/time - expected on-hire date and/or time

Comments:

Notes: *Sample segment :*
DTM+201:200211211700:203'

Data Element Summary

| | <u>Data Element</u> | <u>Component Element</u> | <u>Name</u> | <u>Attributes</u> |
|---|---------------------|--------------------------|---|-------------------|
| M | C507 | | DATE/TIME/PERIOD | M 1 |
| M | | 2005 | Date or time or period function code qualifier | M an..3 |
| | | | 7 <i>Effective date/time</i> | |
| | | | 36 <i>Expiry date</i> | |
| | | | 94 <i>Production/manufacture date</i> | |
| | | | 171 <i>Reference date/time</i> | |
| | | | 181 <i>Positioning date/time of equipment</i> | |
| | | | 201 <i>Pick-up date/time of equipment</i> | |
| | | | 371 <i>Hydrotest date</i> | |
| | | | 376 <i>Biannual terminal inspection date</i> | |
| | | | 377 <i>Federal HighWay Administr. (FHWA) inspection date</i> | |
| | | | 378 <i>Container Safety Convention (CSC) inspection date</i> | |
| | | | 379 <i>Periodic inspection date</i> | |
| | | | 395 <i>Equipment positioning date/time, estimated</i> | |
| | | | 396 <i>Equipment positioning date/time, requested</i> | |
| | | | 397 <i>Equipment positioning date/time, ultimate</i> | |
| | | | 400 <i>Cargo release date/time, ultimate</i> | |
| O | | | 798 <i>Verified gross mass determination date/time</i> | |
| | | | <i>Code as available from version D.15B:</i> | |
| | | | <i>Date/Time when a gross mass (weight) of a packed container was obtained for verification according to SOLAS chapter VI, regulation 2, paragraphs 4-6</i> | |
| R | | 2380 | Date or time or period value | C an..35 |
| | | | <i>Date or date/time</i> | |
| R | | 2379 | Date or time or period format code | C an..3 |
| | | | 102 <i>CCYYMMDD</i> | |
| | | | 203 <i>CCYYMMDDHHMM</i> | |



Segment: **LOC** Place/Location Identification
Position: 0610
Group: Segment Group 13 (Equipment Details) Mandatory
Level: 2
Usage: Conditional (Required)
Max Use: 9
Purpose: A segment to specify ports/locations associated with the sea transport of a container in case of export, such as: - place of discharge - transhipment place

Comments:

Notes: *Sample segment :*
LOC+11+ZACPT:139:6+CTCT:72:SMD+F-BERTH:266:ZZZ'

Data Element Summary

| | <u>Data Element</u> | <u>Component Element</u> | <u>Name</u> | <u>Attributes</u> |
|---|---------------------|--------------------------|---|-------------------|
| M | 3227 | | LOCATION FUNCTION CODE QUALIFIER | M 1 an..3 |
| | | | 5 <i>Place of departure</i> | |
| | | | 7 <i>Place of delivery</i> | |
| | | | 8 <i>Place of destination</i> | |
| | | | 9 <i>Place/port of loading</i> | |
| | | | 11 <i>Place/port of discharge</i> | |
| | | | 13 <i>Place of transhipment</i> | |
| | | | 15 <i>Place of transfer responsibility</i> | |
| | | | 33 <i>Baseport of discharge</i> | |
| | | | 34 <i>Baseport of loading</i> | |
| | | | 65 <i>Final port or place of discharge</i> | |
| | | | 88 <i>Place of receipt</i> | |
| | | | 98 <i>Place of empty equipment despatch</i> | |
| | | | 147 <i>Stowage cell</i> | |
| | | | 154 <i>Place/location of on-hire</i> | |
| | | | 155 <i>Place/location of off-hire</i> | |
| | | | 170 <i>Final port of discharge</i> | |
| | | | 171 <i>Place of destination for pre-stacking prior to stowage</i> | |
| | | | 175 <i>Activity location</i> | |
| R | C517 | | LOCATION IDENTIFICATION | C 1 |
| O | | 3225 | Location name code | C an..25 |
| | | | UNLOCODE | |
| | | | <i>Stowage location (ISO format BBBRRTT) (if e3227 = 147)</i> | |
| O | | 1131 | Code list identification code | C an..17 |
| | | | 139 <i>Port</i> | |
| O | | 3055 | Code list responsible agency code | C an..3 |
| | | | 5 <i>ISO (International Organization for Standardization)</i> | |



Only to be used when e3227 = 147 (stowage cell)

6

UN/ECE (United Nations - Economic Commission for Europe)

| | | | | | |
|---|------|------|---|---|---------|
| O | | 3224 | Location name | C | an..256 |
| | | | <i>Place/location name (free text)</i> | | |
| O | C519 | | RELATED LOCATION ONE IDENTIFICATION | C | 1 |
| O | | 3223 | First related location name code | C | an..25 |
| | | | <i>1st related location code</i> | | |
| O | | 1131 | Code list identification code | C | an..17 |
| | | 72 | Container terminal | | |
| | | 261 | Consignee's premises | | |
| | | 262 | Consignor's premises | | |
| | | 263 | Packing and/or unpacking facility | | |
| | | 264 | Storage facility | | |
| | | 265 | Repair facility | | |
| | | 266 | Marine berth | | |
| | | 267 | Marine wharf | | |
| | | 268 | Gate | | |
| | | 269 | Warehouse | | |
| O | | 3055 | Code list responsible agency code | C | an..3 |
| | | 9 | EAN (International Article Numbering association) | | |
| | | 184 | AU, ACOS (Australian Chamber of Shipping) | | |
| | | SMD | SMDG (Shipplanning Message Development Group) | | |
| | | | Temporary code | | |
| | | ZZZ | Mutually defined | | |
| O | | 3222 | First related location name | C | an..70 |
| | | | <i>1st related location name (free text)</i> | | |
| O | C553 | | RELATED LOCATION TWO IDENTIFICATION | C | 1 |
| O | | 3233 | Second related location name code | C | an..25 |
| | | | <i>2nd related location code</i> | | |
| O | | 1131 | Code list identification code | C | an..17 |
| | | 5 | Facility identification | | |
| | | 72 | Container terminal | | |
| | | 261 | Consignee's premises | | |
| | | 262 | Consignor's premises | | |
| | | 263 | Packing and/or unpacking facility | | |
| | | 264 | Storage facility | | |
| | | 265 | Repair facility | | |
| | | 266 | Marine berth | | |
| | | 267 | Marine wharf | | |
| | | 268 | Gate | | |
| | | 269 | Warehouse | | |
| O | | 3055 | Code list responsible agency code | C | an..3 |
| | | 9 | EAN (International Article Numbering association) | | |
| | | 184 | AU, ACOS (Australian Chamber of Shipping) | | |



| | | | | | |
|----------|-------------|-------------|--|----------|----------------|
| | | <i>SMD</i> | <i>SMDG (Shipplanning Message Development Group)</i> | | |
| | | | <i>Temporary code</i> | | |
| | | <i>ZZZ</i> | <i>Mutually defined</i> | | |
| O | | 3232 | Second related location name | C | an..70 |
| | | | <i>2nd related location name (free text)</i> | | |
| X | 5479 | | RELATION CODE | C | 1 an..3 |



Segment: **MEA** Measurements
Position: 0620
Group: Segment Group 13 (Equipment Details) Mandatory
Level: 2
Usage: Conditional (Optional)
Max Use: 9
Purpose: A segment to specify measurement, other than dimensions, associated with the container, such as: - tare weight - gross weight

Comments:

Notes: *Sample segment :*
MEA+AAE+AET+KGM:10500'

Data Element Summary

| | <u>Data Element</u> | <u>Component Element</u> | <u>Name</u> | <u>Attributes</u> |
|---|---------------------|--------------------------|--|-------------------|
| M | 6311 | | MEASUREMENT PURPOSE CODE QUALIFIER <i>AAE Measurement</i> | M 1 an..3 |
| R | C502 | | MEASUREMENT DETAILS | C 1 |
| R | | 6313 | Measured attribute code | C an..3 |
| | | | <i>AAL Net weight</i> | |
| | | | <i>AAO Humidity</i> | |
| | | | Humidity setting in percentage. | |
| | | | <i>AAS Air flow</i> | |
| | | | Ventilation setting in cbm/hour | |
| | | | <i>AAW Gross volume</i> | |
| | | | <i>ABJ Volume</i> | |
| | | | <i>AET Transport equipment gross weight</i> | |
| | | | <i>CD Carbondioxide</i> | |
| | | | Carbondioxide setting in percentage | |
| | | | Temporary code | |
| | | | <i>G Gross weight</i> | |
| | | | <i>MW Maximum weight</i> | |
| | | | <i>T Tare weight</i> | |
| | | | <i>ZO Oxygen</i> | |
| | | | Oxygen setting in percentage | |
| D | | VGM | <i>Transport equipment verified gross mass (weight)</i> Code as available from version D.15B: <i>Transport equipment's gross mass (weight)</i> verified according to SOLAS Chapter VI, Regulation 2, paragraphs 4-6 <i>Dependency: in case VGM available</i> | |
| X | | 6321 | Measurement significance code | C an..3 |
| X | | 6155 | Non-discrete measurement name code | C an..17 |
| X | | 6154 | Non-discrete measurement name | C an..70 |



| | | | | |
|---|------|--------------------------------------|---|---------|
| R | C174 | VALUE/RANGE | C | 1 |
| M | | 6411 Measurement unit code | M | an..3 |
| | | FTQ Cubic Feet | | |
| | | KGM Kilograms | | |
| | | LBR Pounds | | |
| | | MTQ Cubic Metres | | |
| | | PCT Percentage | | |
| R | | 6314 Measurement value | C | an..18 |
| | | Weight, volume or percentage. | | |
| X | | 6162 Range minimum value | C | n..18 |
| X | | 6152 Range maximum value | C | n..18 |
| X | | 6432 Significant digits quantity | C | n..2 |
| X | 7383 | SURFACE OR LAYER CODE | C | 1 an..3 |



Segment: DIM Dimensions
Position: 0630
Group: Segment Group 13 (Equipment Details) Mandatory
Level: 2
Usage: Conditional (Optional)
Max Use: 9
Purpose: - off-standard dimensions, general - off-standard dimensions, front - off-standard dimensions, rear - off-standard dimensions, right - off-standard dimensions, left - off-standard dimensions, height - external equipment dimensions - dimensions equipment door - net dimensions

Comments:

Notes: *Sample segment :*
DIM+7+CMT::20'

Data Element Summary

| | <u>Data Element</u> | <u>Component Element</u> | <u>Name</u> | <u>Attributes</u> |
|---|---------------------|--------------------------|--|-------------------|
| M | 6145 | | DIMENSION TYPE CODE QUALIFIER | M 1 an..3 |
| | | | 1 <i>Gross dimensions</i> | |
| | | | To be used for break bulk only | |
| | | | 5 <i>Off-standard dimension front</i> | |
| | | | 6 <i>Off-standard dimension back</i> | |
| | | | 7 <i>Off-standard dimension right</i> | |
| | | | 8 <i>Off-standard dimension left</i> | |
| | | | 10 <i>External equipment dimension</i> | |
| | | | To be used for non-ISO equipment only | |
| | | | 13 <i>Off-standard dimensions height</i> | |
| M | C211 | | DIMENSIONS | M 1 |
| M | | 6411 | Measurement unit code | M an..3 |
| | | | CMT <i>Centimetres</i> | |
| | | | INH <i>Inches</i> | |
| D | | 6168 | Length dimension value | C n..15 |
| | | | <i>Overall length if e6145 = 1 or 10</i> | |
| | | | <i>Overlength if e6145 = 5 or 6</i> | |
| D | | 6140 | Width dimension value | C n..15 |
| | | | <i>Overall width if e6145 = 1 or 10</i> | |
| | | | <i>Overwidth if e6145 = 7 or 8</i> | |
| D | | 6008 | Height dimension value | C n..15 |
| | | | <i>Overall height if e6145 = 1 or 10</i> | |
| | | | <i>Overheight if e6145 = 13</i> | |



Segment: **TMP** Temperature
Position: 0650 (Trigger Segment)
Group: Segment Group 14 (Temperature) Conditional (Optional)
Level: 2
Usage: Mandatory
Max Use: 1
Purpose: A segment to specify the transport temperature setting of a container.
Comments:
Notes: *Sample segment :*
TMP+2+011:CEL'

Only to be used when a set temperature is to be specified. When a temperature range is to be specified, the RNG segment must be used.

Data Element Summary

| | Data Component | | Attributes |
|---|----------------|--|------------|
| | <u>Element</u> | <u>Element Name</u> | |
| M | 6245 | TEMPERATURE TYPE CODE QUALIFIER 2 <i>Transport temperature</i> | M 1 an..3 |
| R | C239 | TEMPERATURE SETTING | C 1 |
| R | 6246 | Temperature value <i>Temperature setting</i> | C n..15 |
| R | 6411 | Measurement unit code CEL <i>Celsius</i> FAH <i>Fahrenheit</i> | C an..3 |



Segment: **RNG** Range Details
Position: 0660
Group: Segment Group 14 (Temperature) Conditional (Optional)
Level: 3
Usage: Conditional (Optional)
Max Use: 1
Purpose: A segment to specify the transport temperature range or the pre-tripping range of a container.

Comments:

Notes: *Sample segment :*
RNG+5+CEL:009:013'

Only to be used when a temperature range is to be specified. When a set temperature is to be specified, the TMP segment must be used.

Data Element Summary

| | <u>Data Element</u> | <u>Component Element</u> | <u>Name</u> | <u>Attributes</u> |
|---|---------------------|--------------------------|--|-------------------|
| M | 6167 | | RANGE TYPE CODE QUALIFIER 5 <i>Temperature range</i> | M 1 an..3 |
| R | C280 | | RANGE | C 1 |
| M | | 6411 | Measurement unit code CEL <i>Celsius</i> FAH <i>Fahrenheit</i> | M an..3 |
| R | | 6162 | Range minimum value <i>Minimum temperature</i> | C n..18 |
| R | | 6152 | Range maximum value <i>Maximum temperature</i> | C n..18 |



Segment: **SEL** Seal Number
Position: 0670
Group: Segment Group 13 (Equipment Details) Mandatory
Level: 2
Usage: Conditional (Optional)
Max Use: 9
Purpose: A segment to identify seal and seal issuer associated with the container, such as shipper, consolidator, carrier (sea) and Customs.

Comments:

Notes: *Sample segment :*
SEL+87579855+SH+1'

Data Element Summary

| | <u>Data Element</u> | <u>Component Element</u> | <u>Name</u> | <u>Attributes</u> |
|---|---------------------|--------------------------|---|-------------------|
| R | 9308 | | SEAL IDENTIFIER <i>Seal number</i> | C 1 an..35 |
| O | C215 | | SEAL ISSUER | C 1 |
| R | | 9303 | Sealing party name code AA <i>Consolidator</i> AB <i>Unknown</i> AC <i>Quarantine agency</i> CA <i>Carrier</i> CU <i>Customs</i> SH <i>Shipper</i> TO <i>Terminal operator</i> | C an..3 |
| X | | 1131 | Code list identification code | C an..17 |
| X | | 3055 | Code list responsible agency code | C an..3 |
| O | | 9302 | Sealing party name <i>Sealing party name (free text)</i> | C an..35 |
| O | 4517 | | SEAL CONDITION CODE 1 <i>In right condition</i> 2 <i>Damaged</i> | C 1 an..3 |
| X | C208 | | IDENTITY NUMBER RANGE | C 1 |
| X | | 7402 | Object identifier | M an..35 |
| X | | 7402 | Object identifier | C an..35 |



Segment: **FTX** Free Text
Position: 0680
Group: Segment Group 13 (Equipment Details) Mandatory
Level: 2
Usage: Conditional (Optional)
Max Use: 9
Purpose: A segment to specify processable supplementary information associated with the container, such as: - loading instructions (seagoing vessel) - special instructions (related to inland transport) - container order information (conditions to be checked) - remarks

Comments:

Notes: *Sample segment :*
FTX+AAA+++CHOCOLATES'
FTX+OSI++040'
FTX+ABS++SM1:ZZZ:SMD'

Data Element Summary

| | <u>Data Element</u> | <u>Component Element Name</u> | <u>Attributes</u> |
|---|---------------------|---|-------------------|
| M | 4451 | TEXT SUBJECT CODE QUALIFIER | M 1 an..3 |
| | | AAA Goods description | |
| | | AAI General information | |
| | | ABS Additional conditions | |
| | | ACF Additional attribute information | |
| | | ADZ CSC (Container Safety Convention) plate information | |
| | | DAR Damage remarks | |
| | | INV Invoice instruction | |
| | | LOI Loading instruction | |
| | | OSI Other service information | |
| | | SIN Special instructions | |
| X | 4453 | FREE TEXT FUNCTION CODE | C 1 an..3 |
| D | C107 | TEXT REFERENCE | C 1 |
| M | | 4441 Free text value code | M an..17 |

- REEFER SETTINGS (if e4451 = OSI):

CLS Vents closed
QUA Vents one quarter open
HLF Vents half open
THR Vents three quarters open
FLL Vents fully open
025 Volume of air flow 25 cubic meters per hour
etc.



- **INDICATION OF CONSTRUCTION MATERIAL (if e4451 = ACF):**

Construction material code as per ISO 9897

- **INDICATION OF DAMAGE CONDITION (if e4451 = DAR):**

Condition code (see JM4/ITIGG/120)

- **CURRENT EQUIPMENT CONDITION (if e4451 = ABS):**

Condition code (see JM4/ITIGG/120)

For non-running reefer (dry reefer), the correct mechanism as per JM4/272 is as follows :

e4451 = ABS

C107.e4441 = 117 (no temperature setting required)

C107.e1131 = ZZZ (mutually defined)

C107.e3055 = 184 (ACOS)

Condition code (see JM4/ITIGG/120v1.7)

e4451 = ABS

C107.e4441 = SM1 (Gross Mass Verification – SOLAS Method 1) Gross Mass Verification by weighing the packed container as per SOLAS Regulation 2 Chapter VI, paragraphs 4-6, method 1

= SM2 (Gross Mass Verification – SOLAS Method 2) Gross Mass Verification by calculation of weight of goods transported, packing weight, lashing and securing material weight and container tare weight as per SOLAS Regulation 2, Chapter VI paragraphs 4-6, method 2

C107.e1131 = ZZZ

C107.e3055 = SMD (SMDG)

- **INVOICE INSTRUCTION (if e4451 = INV):**

Instruction code (see JM4/ITIGG/120)

- **SPECIAL INSTRUCTION (if e4451 = SIN):**

Instruction code (mutually agreed)

| | | | | |
|----------|-------------|--------------------------------------|----------|---------------|
| O | 1131 | Code list identification code | C | an..17 |
| | | 130 | | |
| | | Special handling | | |
| | | If e4451 = INV | | |



| | | | | | |
|---|------|------|---|---|---------|
| | | ZZZ | <i>Mutually defined</i> <i>If e4451 = ACF, DAR or ABS</i> | | |
| O | | 3055 | Code list responsible agency code | C | an..3 |
| | | 5 | <i>ISO (International Organization for Standardization)</i> <i>If e4451 = ACF</i> | | |
| | | 184 | <i>AU, ACOS (Australian Chamber of Shipping)</i> <i>If e4451 = DAR or ABS</i> | | |
| | | SMD | <i>SMDG (Shipplanning message design group)</i> <i>If e4451 = ABS (SOLAS)</i> | | |
| D | C108 | | TEXT LITERAL <i>See Recommendation JM4/272. Only used if 4451 = AAI</i> | C | 1 |
| M | | 4440 | Free text value | M | an..512 |
| | | | - <i>CSC PROBLEMS (if e4451 = CSC) :</i> | | |
| | | | <i>CSC re-inspection date (CCYYMM) or</i> <i>ACEP (if there is an acceptance sticker) or</i> <i>NDAT (in all other cases)</i> | | |
| | | | - <i>LOADING INSTRUCTION (if e4451 = LOI):</i> | | |
| | | | <i>Free text</i> | | |
| | | | - <i>GENERAL INFORMATION (if e4451 = AAI):</i> | | |
| | | | <i>Free text</i> | | |
| | | | - <i>DESCRIPTION OF GOODS (if e4451 = AAA):</i> | | |
| | | | <i>Free text</i> | | |
| O | | 4440 | Free text value | C | an..512 |
| O | | 4440 | Free text value | C | an..512 |
| O | | 4440 | Free text value | C | an..512 |
| O | | 4440 | Free text value | C | an..512 |
| X | 3453 | | LANGUAGE NAME CODE | C | 1 an..3 |
| X | 4447 | | FREE TEXT FORMAT CODE | C | 1 an..3 |



Segment: **DGS** Dangerous Goods
Position: 0710 (Trigger Segment)
Group: Segment Group 15 (Dangerous Goods) Conditional (Optional)
Level: 2
Usage: Mandatory
Max Use: 1
Purpose: A segment to specify dangerous goods.
Comments:
Notes: *Sample segment :*
DGS+IMD+3+2058+026:CEL++3-06'

Data Element Summary

| | <u>Data Element</u> | <u>Component Element</u> | <u>Name</u> | <u>Attributes</u> |
|---|---------------------|--------------------------|---|-------------------|
| R | 8273 | | DANGEROUS GOODS REGULATIONS CODE | C 1 an..3 |
| | | | <i>ADR European agreement on the international carriage of dangerous goods on road (ADR)</i> | |
| | | | <i>ANR ADNR, Autorisation de transport de matieres Dangereuses pour la Navigation sur le Rhin</i> | |
| | | | <i>CFR US, 49 Code of federal regulations</i> | |
| | | | <i>IMD IMO IMDG code</i> | |
| | | | <i>RID Railroad dangerous goods book (RID)</i> | |
| R | C205 | | HAZARD CODE | C 1 |
| M | | 8351 | Hazard identification code | M an..7 |
| | | | <i>IMDG Class Number</i> | |
| | | | <i>IMDG Sub- class number</i> | |
| | | | <i>RID Class number</i> | |
| | | | <i>CFR49 Codes</i> | |
| O | | 8078 | Additional hazard classification identifier | C an..7 |
| | | | <i>IMDG Code page number (english version)</i> | |
| O | | 8092 | Hazard code version identifier | C an..10 |
| | | | <i>IMDG Code Version number</i> | |
| O | C234 | | UNDG INFORMATION | C 1 |
| O | | 7124 | United Nations Dangerous Goods (UNDG) identifier | C n4 |
| | | | <i>UNDG Number</i> | |
| X | | 7088 | Dangerous goods flashpoint value | C an..8 |
| O | C223 | | DANGEROUS GOODS SHIPMENT FLASHPOINT | C 1 |
| R | | 7106 | Shipment flashpoint value | C n3 |
| | | | <i>Flashpoint temperature</i> | |
| R | | 6411 | Measurement unit code | C an..3 |
| | | | <i>CEL Celsius</i> | |
| | | | <i>FAH Fahrenheit</i> | |
| O | 8339 | | PACKAGING DANGER LEVEL CODE | C 1 an..3 |
| | | | <i>1 Great danger</i> | |



| | | | | | |
|---|------|------|--|---|----------|
| | | | Packing Group I | | |
| | | 2 | Medium danger | | |
| | | | Packing Group II | | |
| | | 3 | Minor danger | | |
| | | | Packing Group III | | |
| O | 8364 | | EMERGENCY PROCEDURE FOR SHIPS IDENTIFIER <i>EMS Number</i> | C | 1 an..6 |
| O | 8410 | | HAZARD MEDICAL FIRST AID GUIDE IDENTIFIER <i>MFAG Number</i> | C | 1 an..4 |
| O | 8126 | | TRANSPORT EMERGENCY CARD IDENTIFIER <i>TREM Card Number</i> | C | 1 an..10 |
| O | C235 | | HAZARD IDENTIFICATION PLACARD DETAILS | C | 1 |
| O | | 8158 | Orange hazard placard upper part identifier <i>Hazard identification number, upper part</i> | C | an..4 |
| O | | 8186 | Orange hazard placard lower part identifier <i>Hazard identification number, lower part (substance identification number)</i> | C | an4 |
| O | C236 | | DANGEROUS GOODS LABEL | C | 1 |
| R | | 8246 | Dangerous goods marking identifier <i>Dangerous goods label marking 1</i> | C | an..4 |
| O | | 8246 | Dangerous goods marking identifier <i>Dangerous goods label marking 2</i> | C | an..4 |
| O | | 8246 | Dangerous goods marking identifier <i>Dangerous goods label marking 3</i> | C | an..4 |
| X | 8255 | | PACKING INSTRUCTION TYPE CODE | C | 1 an..3 |
| X | 8325 | | HAZARDOUS MEANS OF TRANSPORT CATEGORY CODE | C | 1 an..3 |
| X | 8211 | | HAZARDOUS CARGO TRANSPORT AUTHORISATION CODE | C | 1 an..3 |



Segment: **FTX** Free Text
Position: 0720
Group: Segment Group 15 (Dangerous Goods) Conditional (Optional)
Level: 3
Usage: Conditional (Optional)
Max Use: 9
Purpose: A segment to specify supplementary details regarding the dangerous goods such as the technical name of the dangerous goods etc.

Comments:

Notes: *Sample segment :*
FTX+AAC++PP'
FTX+AAD+++BUTYL ACRYLATES, STABILIZED'

Data Element Summary

| | Data Element | Component Element | Name | Attributes |
|---|--------------|-------------------|--|------------|
| M | 4451 | | TEXT SUBJECT CODE QUALIFIER | M 1 an..3 |
| | | | AAC Dangerous goods additional information | |
| | | | AAD Dangerous goods, technical name | |
| X | 4453 | | FREE TEXT FUNCTION CODE | C 1 an..3 |
| O | C107 | | TEXT REFERENCE | C 1 |
| M | | 4441 | Free text value code | M an..17 |
| | | | <i>MARPOL details or indication of transport of dangerous goods in limited quantities (if 4451 = AAC).</i> | |
| | | | P Marine Pollutant | |
| | | | PP Severe Marine Pollutant | |
| | | | TLQ Transport of dangerous goods in limited quantities | |
| X | | 1131 | Code list identification code | C an..17 |
| X | | 3055 | Code list responsible agency code | C an..3 |
| O | C108 | | TEXT LITERAL | C 1 |
| M | | 4440 | Free text value | M an..512 |
| | | | <i>Dangerous Goods technical name (if 4451 = AAD)</i> | |
| | | | <i>Exterior Placard Label (if 4451 = AAC)</i> | |
| O | | 4440 | Free text value | C an..512 |
| O | | 4440 | Free text value | C an..512 |
| O | | 4440 | Free text value | C an..512 |
| O | | 4440 | Free text value | C an..512 |
| X | 3453 | | LANGUAGE NAME CODE | C 1 an..3 |
| X | 4447 | | FREE TEXT FORMAT CODE | C 1 an..3 |



Segment: **CTA** Contact Information
Position: 0750 (Trigger Segment)
Group: Segment Group 16 (Contact Information) Conditional (Optional)
Level: 3
Usage: Mandatory
Max Use: 1
Purpose: A segment to identify a person or department to be contacted regarding the dangerous goods.

Comments:

Notes: *Sample segment :*
CTA+HE+:CHEMTREC'

Data Element Summary

| | <u>Data Element</u> | <u>Component Element</u> | <u>Name</u> | <u>Attributes</u> |
|---|---------------------|--------------------------|--|---------------------|
| R | 3139 | | CONTACT FUNCTION CODE <i>HE Emergency dangerous goods contact</i> | C 1 an..3 |
| R | C056 | | DEPARTMENT OR EMPLOYEE DETAILS | C 1 |
| X | | 3413 | <i>Department or employee name code</i> | C an..17 |
| R | | 3412 | Department or employee name <i>Contact name</i> | C an..35 |



Segment: **COM** Communication Contact
Position: 0760
Group: Segment Group 16 (Contact Information) Conditional (Optional)
Level: 4
Usage: Conditional (Optional)
Max Use: 9
Purpose: A segment to specify communication details of the contact specified in the CTA segment.
Comments:
Notes: *Sample segment :
 COM+1800873138:TE'*

Data Element Summary

| | <u>Data Element</u> | <u>Component Element</u> | <u>Name</u> | <u>Attributes</u> |
|---|---------------------|--------------------------|---|-------------------|
| M | C076 | | COMMUNICATION CONTACT | M 3 |
| M | | 3148 | Communication address identifier <i>Contact number</i> | M an..512 |
| M | | 3155 | Communication address code qualifier <i>EM Electronic mail</i> <i>FX Telefax</i> <i>TE Telephone</i> <i>TL Telex</i> <i>XF X.400 address</i> | M an..3 |



Segment: **EQA** Attached Equipment
Position: 0790
Group: Segment Group 13 (Equipment Details) Mandatory
Level: 2
Usage: Conditional (Optional)
Max Use: 1
Purpose: A segment to identify related container and means of transport details (rail), such as: - rail car (to relate to the 'rail-car'-qualified EQD-group)

Comments:

Notes: *Sample segment :*
EQA+RG+ PONG328765'

Data Element Summary

| | <u>Data Element</u> | <u>Component Element</u> | <u>Name</u> | <u>Attributes</u> |
|---|---------------------|--------------------------|--|-------------------|
| M | 8053 | | EQUIPMENT TYPE CODE QUALIFIER | M 1 an..3 |
| | | | AB Chain | |
| | | | AD Temperature recorder | |
| | | | BL Blocks | |
| | | | BR Barge | |
| | | | CH Chassis | |
| | | | CN Container | |
| | | | FSU Forked support | |
| | | | LAR Lashing rope | |
| | | | RG Reefer generator | |
| | | | Clip-on | |
| | | | RR Rail car | |
| | | | STR Strap | |
| | | | TE Trailer | |
| | | | TP Tarpaulin | |
| O | C237 | | EQUIPMENT IDENTIFICATION | C 1 |
| R | | 8260 | Equipment identifier Equipment number | C an..17 |
| X | | 1131 | Code list identification code | C an..17 |
| X | | 3055 | Code list responsible agency code | C an..3 |
| X | | 3207 | Country name code | C an..3 |



Segment: **HAN** Handling Instructions
Position: 0810
Group: Segment Group 13 (Equipment Details) Mandatory
Level: 2
Usage: Conditional (Optional)
Max Use: 9
Purpose: A segment to specify handling instructions related to the container equipment.

Comments:

Notes: *Sample segment :*
HAN+RFR:130:184'
HAN+SMA:130:SMD'

Data Element Summary

| | <u>Data Element</u> | <u>Component Element</u> | <u>Name</u> | <u>Attributes</u> |
|---|---------------------|--------------------------|---|-------------------|
| R | C524 | | HANDLING INSTRUCTIONS | C 1 |
| O | | 4079 | Handling instruction description code <i>Code as per JM4/ITIGG/120v1.7</i> | C an..3 |
| O | | 1131 | Code list identification code <i>130 Special handling</i> | C an..17 |
| O | | 3055 | Code list responsible agency code <i>184 AU, ACOS (Australian Chamber of Shipping)</i> <i>SMD SMDG (Shipplaning message design group)</i> | C an..3 |
| O | | 4078 | Handling instruction description <i>Handling instruction (free text)</i> | C an..70 |
| X | C218 | | HAZARDOUS MATERIAL | C 1 |
| X | | 7419 | Hazardous material category name code | C an..4 |
| X | | 1131 | Code list identification code | C an..17 |
| X | | 3055 | Code list responsible agency code | C an..3 |
| X | | 7418 | Hazardous material category name | C an..35 |



Segment: **TDT** Details of Transport
Position: 0860 (Trigger Segment)
Group: Segment Group 18 (Details of Transport) Conditional (Optional)
Level: 2
Usage: Mandatory
Max Use: 1
Purpose: A segment to specify pre- or on-carriage transport details, such as: * pre- or on-carriage transport * second pre- or on-carriage transport

Comments:

Notes: *Sample segment :*
TDT+1++9+10+:::CSX'

Data Element Summary

| | <u>Data Element</u> | <u>Component Element</u> | <u>Name</u> | <u>Attributes</u> |
|---|---------------------|--------------------------|---|-------------------|
| M | 8051 | | TRANSPORT STAGE CODE QUALIFIER | M 1 an..3 |
| | | | 1 <i>Inland transport</i> | |
| | | | 10 <i>Pre-carriage transport</i> | |
| | | | 30 <i>On-carriage transport</i> | |
| O | 8028 | | MEANS OF TRANSPORT JOURNEY IDENTIFIER | C 1 an..17 |
| | | | <i>Carrier's voyage number</i> | |
| R | C220 | | MODE OF TRANSPORT | C 1 |
| R | | 8067 | Transport mode name code | C an..3 |
| | | | 1 <i>Maritime Transport</i> | |
| | | | 2 <i>Rail</i> | |
| | | | 3 <i>Road</i> | |
| | | | 4 <i>Air</i> | |
| | | | 8 <i>Inland Water</i> | |
| | | | 9 <i>Mode unknown</i> | |
| X | | 8066 | Transport mode name | C an..17 |
| O | C228 | | TRANSPORT MEANS | C 1 |
| O | | 8179 | Transport means description code | C an..8 |
| | | | <i>Means of transport code (UN/ECE recommendation 28)</i> | |
| O | | 8178 | Transport means description | C an..17 |
| | | | <i>Type of means of transport (free text)</i> | |
| O | C040 | | CARRIER | C 1 |
| O | | 3127 | Carrier identifier | C an..17 |
| | | | <i>Carrier code</i> | |
| O | | 1131 | Code list identification code | C an..17 |
| | | | 172 <i>Carriers</i> | |
| O | | 3055 | Code list responsible agency code | C an..3 |
| | | | 20 <i>BIC (Bureau International des Containeurs)</i> | |
| | | | 87 <i>Assigned by carrier</i> | |
| | | | 166 <i>US, National Motor Freight Classification</i> | |



| | | | | | |
|---|------|------|--|---|---------|
| | | | Association | | |
| | | 184 | AU, ACOS (Australian Chamber of Shipping) | | |
| | | SMD | SMDG Shippanning Message Development Group) | | |
| | | | Temporary code | | |
| | | ZZZ | Mutually defined | | |
| O | | 3128 | Carrier name | C | an..35 |
| | | | Carrier name (free text) | | |
| X | 8101 | | TRANSIT DIRECTION INDICATOR CODE | C | 1 an..3 |
| X | C401 | | EXCESS TRANSPORTATION INFORMATION | C | 1 |
| X | | 8457 | Excess transportation reason code | M | an..3 |
| X | | 8459 | Excess transportation responsibility code | M | an..3 |
| X | | 7130 | Customer shipment authorisation identifier | C | an..17 |
| O | C222 | | TRANSPORT IDENTIFICATION | C | 1 |
| O | | 8213 | Transport means identification name identifier | C | an..9 |
| | | | Call Sign (if 8067 = 1 and C222/1131 = 103) | | |
| | | | Lloyds Number (if 8067 = 1 and C222/1131 = 146) | | |
| | | | Train ID/Number (if 8067 = 2) | | |
| | | | Truck ID/Number (if 8067 = 3) | | |
| | | | Air Service ID (if 8067 = 4) | | |
| | | | Barge ID/Number (if 8067 = 8) | | |
| O | | 1131 | Code list identification code | C | an..17 |
| | | 103 | Call sign directory | | |
| | | 146 | Means of transport identification | | |
| O | | 3055 | Code list responsible agency code | C | an..3 |
| | | 11 | Lloyd's register of shipping | | |
| | | ZZZ | Mutually defined | | |
| O | | 8212 | Transport means identification name | C | an..35 |
| | | | Name of Means of Transport (free text) | | |
| O | | 8453 | Transport means nationality code | C | an..3 |
| | | | Flag of Means of Transport (ISO Country Code) | | |
| X | 8281 | | TRANSPORT MEANS OWNERSHIP INDICATOR CODE | C | 1 an..3 |



Segment: **DTM** Date/Time/Period
Position: 0870
Group: Segment Group 18 (Details of Transport) Conditional (Optional)
Level: 3
Usage: Conditional (Optional)
Max Use: 9
Purpose: A segment to specify a date and time related to the pre- or on-carriage transport such as arrival or departure date and time.

Comments:

Notes: *Sample segment :*
DTM+132:200212270600:203'

Data Element Summary

| | <u>Data Element</u> | <u>Component Element</u> | <u>Name</u> | <u>Attributes</u> |
|---|---------------------|--------------------------|--|-------------------|
| M | C507 | | DATE/TIME/PERIOD | M 1 |
| M | | 2005 | Date or time or period function code qualifier | M an..3 |
| | | | 132 <i>Arrival date/time, estimated</i> | |
| | | | 133 <i>Departure date/time, estimated</i> | |
| | | | 178 <i>Arrival date/time, actual</i> | |
| | | | 186 <i>Departure date/time, actual</i> | |
| R | | 2380 | Date or time or period value | C an..35 |
| | | | <i>Arrival/departure date/time</i> | |
| R | | 2379 | Date or time or period format code | C an..3 |
| | | | 203 <i>CCYYMMDDHHMM</i> | |



Segment: **LOC** Place/Location Identification
Position: 0890 (Trigger Segment)
Group: Segment Group 19 (Place/Location Identification) Conditional (Required)
Level: 3
Usage: Mandatory
Max Use: 1
Purpose: A segment to specify ports/locations associated with the pre- or on-carriage transport, such as: - place of departure - place of arrival

Comments:

Notes: *Sample segment :*
LOC+88+AUMEL:139:6'

Data Element Summary

| | <u>Data Element</u> | <u>Component Element</u> | <u>Name</u> | <u>Attributes</u> |
|---|---------------------|--------------------------|---|-------------------|
| M | 3227 | | LOCATION FUNCTION CODE QUALIFIER | M 1 an..3 |
| | | | 7 <i>Place of delivery</i> | |
| | | | 8 <i>Place of destination</i> | |
| | | | 9 <i>Place/port of loading</i> | |
| | | | 11 <i>Place/port of discharge</i> | |
| | | | 13 <i>Place of transshipment</i> | |
| | | | 88 <i>Place of receipt</i> | |
| | | | 170 <i>Final port of discharge</i> | |
| | | | 171 <i>Place of destination for pre-stacking prior to stowage</i> | |
| | | | 175 <i>Activity location</i> | |
| R | C517 | | LOCATION IDENTIFICATION | C 1 |
| O | | 3225 | Location name code | C an..25 |
| | | | UNLOCODE | |
| O | | 1131 | Code list identification code | C an..17 |
| | | | 139 <i>Port</i> | |
| O | | 3055 | Code list responsible agency code | C an..3 |
| | | | 6 <i>UN/ECE (United Nations - Economic Commission for Europe)</i> | |
| O | | 3224 | Location name | C an..256 |
| | | | <i>Place/location name (free text)</i> | |
| O | C519 | | RELATED LOCATION ONE IDENTIFICATION | C 1 |
| O | | 3223 | First related location name code | C an..25 |
| | | | <i>1st related location code</i> | |
| O | | 1131 | Code list identification code | C an..17 |
| | | | 72 <i>Container terminal</i> | |
| | | | 261 <i>Consignee's premises</i> | |
| | | | 262 <i>Consignor's premises</i> | |
| | | | 263 <i>Packing and/or unpacking facility</i> | |



| | | | | | |
|---|------|-------------|---|----------|----------------|
| | | 264 | Storage facility | | |
| | | 265 | Repair facility | | |
| | | 266 | Marine berth | | |
| | | 267 | Marine wharf | | |
| | | 268 | Gate | | |
| | | 269 | Warehouse | | |
| O | | 3055 | Code list responsible agency code | C | an..3 |
| | | 9 | EAN (International Article Numbering association) | | |
| | | 184 | AU, ACOS (Australian Chamber of Shipping) | | |
| | | SMD | SMDG (Shipplanning Message Design Group) | | |
| | | | Temporary code | | |
| | | ZZZ | Mutually defined | | |
| O | | 3222 | First related location name | C | an..70 |
| | | | <i>1st related location name (free text)</i> | | |
| O | C553 | | RELATED LOCATION TWO IDENTIFICATION | C | 1 |
| O | | 3233 | Second related location name code | C | an..25 |
| | | | <i>2nd related location code</i> | | |
| O | | 1131 | Code list identification code | C | an..17 |
| | | 5 | Facility identification | | |
| | | 72 | Container terminal | | |
| | | 261 | Consignee's premises | | |
| | | 262 | Consignor's premises | | |
| | | 263 | Packing and/or unpacking facility | | |
| | | 264 | Storage facility | | |
| | | 265 | Repair facility | | |
| | | 266 | Marine berth | | |
| | | 267 | Marine wharf | | |
| | | 268 | Gate | | |
| | | 269 | Warehouse | | |
| O | | 3055 | Code list responsible agency code | C | an..3 |
| | | 9 | EAN (International Article Numbering association) | | |
| | | 184 | AU, ACOS (Australian Chamber of Shipping) | | |
| | | SMD | SMDG (Shipplanning Message Development Group) | | |
| | | | Temporary code | | |
| | | ZZZ | Mutually defined | | |
| O | | 3232 | Second related location name | C | an..70 |
| | | | <i>2nd related location name (free text)</i> | | |
| X | 5479 | | RELATION CODE | C | 1 an..3 |



Segment: **NAD** Name and Address
Position: 0920 (Trigger Segment)
Group: Segment Group 20 (Name and Address) Conditional (Optional)
Level: 2
Usage: Mandatory
Max Use: 1
Purpose: A segment to specify a related address or party, such as: - charges payer - country/place of container stuffing - place of collection - final place of positioning - message to - next destination - release to party - carrier agent (sea) - return address

Comments:

Notes: *Sample segment :*
NAD+CF+PON:172:20'
NAD+AM+++JOHN DILINGER'

Data Element Summary

| | <u>Data Element</u> | <u>Component Element</u> | <u>Name</u> | <u>Attributes</u> |
|---|---------------------|--------------------------|--|-------------------|
| M | 3035 | | PARTY FUNCTION CODE QUALIFIER | M 1 an..3 |
| | | CA | Carrier | |
| | | CB | Customs broker | |
| | | CF | Container operator/lessee | |
| | | CG | Carrier's agent | |
| | | CN | Consignee | |
| | | CZ | Consignor | |
| | | EQ | Empty container responsible party | |
| | | FP | Freight/charges payer | |
| | | GA | Road carrier | |
| | | GT | Rail carrier | |
| | | HR | Shipping line service | |
| | | IO | Insurance company | |
| | | JB | Goods collection party | |
| | | JC | Party at final place of positioning | |
| | | MF | Manufacturer of goods | |
| | | OG | Owner or lessor's surveyor | |
| | | OH | Lessee's surveyor | |
| | | ST | Ship to | |
| D | | AM | Authorized official – (VGM EDI signature) Name in capitals of Authorized person signing for verified gross mass (weight) = EDI signature Dependency: Required if VGM is present in MEA. | |
| O | | SPC | SOLAS packed container VGM responsible party - Code as available from version D.15B: Party responsible for declaration of a packed | |



container's verified gross mass (weight) according to SOLAS Chapter VI, Regulation 2, paragraphs 4-6

| | | | | |
|---|------|--|---|--------|
| O | C082 | PARTY IDENTIFICATION DETAILS | C | 1 |
| M | 3039 | Party identifier | M | an..35 |
| | | <i>Company Code</i> | | |
| O | 1131 | Code list identification code | C | an..17 |
| | | 160 <i>Party identification</i> | | |
| | | 172 <i>Carriers</i> | | |
| O | 3055 | Code list responsible agency code | C | an..3 |
| | | 7 <i>CEFIC (Conseil Europeen des Federations de l'Industrie Chimique)</i> | | |
| | | 9 <i>EAN (International Article Numbering association)</i> | | |
| | | 10 <i>ODETTE</i> | | |
| | | 16 <i>US, D&B (Dun & Bradstreet Corporation)</i> | | |
| | | 20 <i>BIC (Bureau International des Containeurs)</i> | | |
| | | 87 <i>Assigned by carrier</i> | | |
| | | 163 <i>US, FMC (Federal Maritime Commission)</i> | | |
| | | 166 <i>US, National Motor Freight Classification Association</i> | | |
| | | 184 <i>AU, ACOS (Australian Chamber of Shipping)</i> | | |
| | | SMD <i>SMDG (Shipplanning Message Development Group)</i> | | |
| | | Temporary code | | |
| O | C058 | NAME AND ADDRESS | C | 1 |
| | | <i>The use of C058 is allowed to accommodate specific local requirements that exist in several ports. The use of C058 however is in general not recommended - whenever possible it is suggested to use C082 instead.</i> | | |
| M | 3124 | Name and address description | M | an..35 |
| O | 3124 | Name and address description | C | an..35 |
| O | 3124 | Name and address description | C | an..35 |
| O | 3124 | Name and address description | C | an..35 |
| O | 3124 | Name and address description | C | an..35 |
| O | C080 | PARTY NAME | C | 1 |
| O | 3036 | Party name | M | an..35 |
| D | | <i>1. Name in capitals of the person authorized to sign the shipping document declaring a verified gross mass (weight) (In case of qualifier 'AM') = EDI signature</i> | | |
| | | <i>2. Company name of SOLAS verified gross mass responsible party (in case of qualifier 'SPC') (optional occurrence 2) = Company of person signing for Verified Gross Mass</i> | | |
| X | 3036 | Party name | C | an..35 |
| X | 3036 | Party name | C | an..35 |
| X | 3036 | Party name | C | an..35 |



| | | | | | |
|---|------|------|---|---|----------|
| X | | 3036 | Party name | C | an..35 |
| X | | 3045 | Party name format code | C | an..3 |
| O | C059 | | STREET | C | 1 |
| O | | 3042 | Street and number or post office box identifier | M | an..35 |
| X | | 3042 | Street and number or post office box identifier | C | an..35 |
| X | | 3042 | Street and number or post office box identifier | C | an..35 |
| X | | 3042 | Street and number or post office box identifier | C | an..35 |
| O | 3164 | | CITY NAME | C | 1 an..35 |
| | | | <i>Verified Gross Mass (weight) obtained location</i> | | |
| O | C819 | | COUNTRY SUB-ENTITY DETAILS | C | 1 |
| O | | 3229 | Country sub-entity name code | C | an..9 |
| O | | 1131 | Code list identification code | C | an..17 |
| O | | 3055 | Code list responsible agency code | C | an..3 |
| O | | 3228 | Country sub-entity name | C | an..35 |
| O | 3251 | | POSTAL IDENTIFICATION CODE | C | 1 an..17 |
| O | 3207 | | COUNTRY NAME CODE | C | 1 an..3 |
| | | | <i>Verified Gross Mass (weight) obtained country</i> | | |



Segment: **CNT** Control Total
Position: 0970
Group:
Level: 0
Usage: Conditional (Required)
Max Use: 1
Purpose: A segment to specify the number of containers in the message, explicitly given by the sender.

Comments:

Notes: *Sample segment :*
CNT+1:1'
CNT+16:25'

Data Element Summary

| | <u>Data Element</u> | <u>Component Element</u> | <u>Name</u> | <u>Attributes</u> |
|---|---------------------|--------------------------|---|-------------------|
| M | C270 | | CONTROL | M 1 |
| M | | 6069 | Control total type code qualifier 1 <i>Algebraic total of the quantity values in line items in a message</i> | M an..3 |
| | | | 16 <i>Total number of equipment</i> | |
| M | | 6066 | Control total value <i>Dummy value of 1 (if e6069 = 1)</i> <i>Number of EQD segments in the message (if e6069 = 16)</i> | M n..18 |
| X | | 6411 | Measurement unit code | C an..3 |



Segment: **UNT** Message Trailer

Position: 0980

Group:

Level: 0

Usage: Mandatory

Max Use: 1

Purpose: A service segment ending a message, giving the total number of segments in the message (including the UNH & UNT) and the control reference number of the message.

Comments:

Notes: *Sample segment :*
UNT+28+00000000006944'

Data Element Summary

| | <u>Data Element</u> | <u>Component Element</u> | <u>Name</u> | <u>Attributes</u> |
|---|---------------------|--------------------------|--|-------------------|
| M | 0074 | | NUMBER OF SEGMENTS IN A MESSAGE <i>Total number of segments in the message</i> | M 1 n..6 |
| M | 0062 | | MESSAGE REFERENCE NUMBER <i>Message reference identical to e0062 in UNH segment</i> | M 1 an..14 |



8. SAMPLE MESSAGE

8.1 Unverified announced booking weight

UNH+0000000006944+COPARN:D:00B:UN:SMDG21'
BGM+126+800255846+9+AB'
DTM+137:200211211523:203'
RFF+ATX:800255846'
DTM+36:200211301200:203'
TDT+20+048R+1+++MSC:172:20+++7104673:146:11:MSC CLAUDIA:PA'
RFF+VM:3EQZ6'
RFF+VON+048'
LOC+9+AUMEL:139:6:MELBOURNE+CONWS:72:SMD:P&O PORTS'
DTM+132:200212290600:203'
NAD+MS+PON:172:20'
CTA+IC+:STAN MATTHEWS'
COM+0198562395:TE'
EQD+CN++4532:102:5+2+2+5'
RFF+SQ:1'
EQN+1'
TMD+3++1'
LOC+11+ZACPT:139:6'
LOC+8+ZAJNB:139:6'
MEA+AAE+AET+KGM:10474'
TMP+2+011:CEL'
FTX+AAA+++CHOCOLATES'
TDT+1++3'
DTM+132:200212270600:203'
LOC+165+AUMEL:139:6'
CNT+16:1'
UNT+27+0000000006944'

Gross weight



8.2 Verified Gross Mass available before Gate IN

UNH+0000000006944+COPARN:D:00B:UN:SMDG21'
BGM+126+800255846+9+AB'
DTM+137:200211211523:203'
RFF+ATX:800255846'
DTM+36:200211301200:203'
TDT+20+048R+1+++MSC:172:20+++7104673:146:11:MSC CLAUDIA:PA'
RFF+VM:3EQZ6'
RFF+VON+048'
LOC+9+AUMEL:139:6:MELBOURNE+CONWS:72:SMD:P&O PORTS'
DTM+132:200212290600:203'
NAD+MS+PON:172:20'
CTA+IC+:STAN MATTHEWS'
COM+0198562395:TE'
EQD+CN++4532:102:5+2+2+5'
RFF+SQ:1'
EQN+1'
TMD+3++1'
DTM+**798**:200211211700:203' Weighing for verification date/time
LOC+11+ZACPT:139:6'
LOC+8+ZAJNB:139:6'
MEA+AAE+**VGM**+KGM:10474' Verified gross mass (weight)
TMP+2+011:CEL'
FTX+AAA+++CHOCOLATES'
FTX+**ABS**++**SM1**:ZZZ:SMD' SOLAS verification method used
TDT+1++9+10'
DTM+132:200212270600:203'
LOC+165+AUMEL:139:6'
NAD+**AM**+++JOHN DILLINGER' EDI signature
CNT+16:1'
UNT+30+0000000006944'



8.3 Instruction to weigh container for verification after Gate IN

This instruction will not update a booking, but will request a container to be weighed according SOLAS method 1 for obtaining the Verified Gross Mass.

```
UNH+0000000006944+COPARN:D:00B:UN:SMDG21'  
BGM+127+800255846+9+AB'                               TE Special service instruction  
DTM+137:200211211523:203'  
RFF+ATX:800255846'  
DTM+36:200211301200:203'  
TDT+20+048R+1+++MSC:172:20+++7104673:146:11:MSC CLAUDIA:PA'  
RFF+VM:3EQZ6'  
RFF+VON+048'  
LOC+9+AUMEL:139:6:MELBOURNE+CONWS:72:SMD:P&O PORTS'  
DTM+132:200212290600:203'  
NAD+MS+PON:172:20'  
CTA+IC+:STAN MATTHEWS'  
COM+0198562395:TE'  
EQD+CN+PONU1234567+4532:102:5+2+2+5'  
RFF+SQ:1'  
EQN+1'  
TMD+3++1'  
LOC+11+ZACPT:139:6'  
LOC+8+ZAJNB:139:6'  
MEA+AAE+G+KGM:10000'                                   Gross weight  
TMP+2+011:CEL'  
FTX+AAA+++CHOCOLATES'  
HAN+SM1:ZZZ:SMD'                                       SOLAS verification method to be used  
CNT+16:1'  
UNT+25+0000000006944'
```