



**User Manual**  
(Implementation Guide)

**UN/EDIFACT MESSAGE**

**COPARN**  
(Container Announcement)

**Version 2.1 - 3**

**D.00B**

---

Version :	2.1 - 3
Date :	May 2016
Source :	SMDG User Group for Shipping Lines and Container Terminals

---



© SMDG

Information in this document is subject to change without notice.

The SMDG claims full copyright to this manual and its contents, however, the manual may be copied and used by anyone, without the consent of SMDG.

**It is not allowed to change the contents of this manual!**

## Revision History

Version	Date	Author(s)	Revision Notes
2.0	March 2003	Karl Zlotkowski	Created version
2.1	August 2015	Paul Wauters	Extended for Gross Weight Verification
2.1-1	October 2015	Paul Wauters	Naming
2.1-2	January 2016	Paul Wauters	Updated UNECE official codes/qualifiers
2.1-3	May 2016	Paul Wauters	Streamlined additions with existing info



---

## CONTENTS

0.	Introduction .....	4
1.	General .....	4
2.	Status Indicators and Usage Indicators....	5
3.	Document Maintenance.....	6
4.	Versions .....	7
5.	Segment Table .....	8
6.	Message Structure Diagram .....	10
7.	Message Description .....	13
8.	Sample Message .....	65



## 0. INTRODUCTION

This User Manual has been developed by the SMDG User Group for Shipping Lines and Container Terminals, a “Global User Group” under the auspices of UN/CEFACT.

This User Manual is based upon the UN/EDIFACT D.00B directory and the ITIGG documents “International Reference Guideline for the implementation of transport EDI messages – COPARN Container Announcement message”, version 1.4, dated March 1998 and “Principles and Rules for the implementation of transport EDI messages – Transport Equipment Movements – Maritime-related container messages”, version 1.3.1, dated September 1996.

This User Manual provides guidance as to the recommended usage of codes, qualifiers, data elements, composites, segments and groups of segments in the D.00B COPARN message. The intention is to assist developers to ensure consistent use of the COPARN message throughout the worldwide trade and transport community.

## 1. GENERAL

### Formal Definition

*“The message contains an order to release, to make available, to accept or to call down containers or to announce the impending arrival of containers. This message is part of a total set of container-related messages. These messages serve to facilitate the intermodal handling of containers by streamlining the information exchange. The business scenario for the container messages is clarified in a separate document, called “Guide to the scenario of EDIFACT container messages”.*

The COPARN message is intended to perform a variety of instruction or request functions associated with equipment movements which are to occur at a future time, such as authorising release of an empty container for packing, or authorising acceptance of a container by a facility. Examples include:

- requesting or authorising acceptance of an empty return
- requesting or authorising acceptance of a full container
- releasing an empty container for packing
- requesting and authorising an on/off hire transaction



## 2. STATUS INDICATORS AND USAGE INDICATORS

### Status Indicators

Status Indicators (“M” and “C”) form part of the UN/EDIFACT standard and indicate a minimum requirement to fulfil the needs of the message structure. They are not adequate for implementation purposes. The Status Indicators are :

<i>Value</i>	<i>Description</i>
M	Mandatory The entity marked as such must appear in all messages, and apply to these messages as well as to any associated implementation guidelines (and consequently is also a Usage Indicator).
C	Conditional The entity is used by agreement between trading partners.

### Usage Indicators

Usage Indicators are implementation–related indicators that further detail the use of “Conditional” Status Indicators. Usage Indicators are applied at all levels of the guidelines and shown adjacent to data items such as segment groups, segments, composite data elements and simple data elements. They dictate the agreed usage of the data items or entities. The Usage Indicators are :

<i>Value</i>	<i>Description</i>
M	Mandatory Indicates the item is mandatory in the UN/EDIFACT message.
R	Required Indicates the item must be transmitted in this implementation.
D	Dependent Indicates that the use of the item is depending on a well-defined condition or set of conditions. These conditions must be clearly specified in the relevant implementation guideline.
O	Optional Indicates that this item is at the need or discretion of both trading partners.
X	Not Used Indicates that this item is not to be used in this implementation.

Where an item within a segment group, segment or composite data element is marked with Usage Indicators “M” or “R”, but the segment group, segment or composite data element has been marked “O” or “D” (or for that matter “X”), the item is only to be transmitted when the segment group, segment or composite of which it is a part, is used.



### 3. DOCUMENT MAINTENANCE

The data content of this document has been prepared and approved by SMDG and no alteration may be made to the content of this document without reference to and approval of SMDG.

Any remarks, questions, amendments or requested alterations to this document are to be addressed to :

SMDG Secretariat  
Seattleweg 7  
3195 ND Rotterdam – Pernis  
The Netherlands

Phone: +31- (0)10 - 2941100  
Fax: +31- (0)10 - 2941105  
E-mail: [secretariat@smdg.org](mailto:secretariat@smdg.org)  
WWW [www.smdg.org](http://www.smdg.org)

Paul Wauters  
c/o PSA Antwerp / Cosmos NV.  
Napelsstraat 79  
2000 Antwerp  
Belgium

Phone: +32 – (0)3 2607056  
Facsimile: +32 – (0)3 2606161  
E-mail [paul.wauters@globalpsa.com](mailto:paul.wauters@globalpsa.com)



## 4. VERSIONS

SMDG21.

Version 2.1, released October 2015, includes amendments for transmission of data specifying a container's verified gross mass (VGM) according to SOLAS regulation 2, chapter VI, paragraphs 4 to 6.

With a short deadline (July 2016) it was decided to do minimum changes - what was considered as an absolute (legal) minimum - to limit the impact on EDI and backend systems of different organizations. It was decided to make additions in the current version without structure changes via existing segments and data elements. Only necessary new qualifier and codes will be requested via DMR.

To handle the new SOLAS requirements on Gross Mass Verification, DMR (Data Maintenance Request) for new codes, to handle the new entities, will be submitted to UN/CEFACT.

The acceptance of these DMR's are available as from version D.15B The Message Implementation Guides can use 'Temporary' codes indicated between square brackets [xxx] and codes only available in a later version.

Changes for SOLAS in this manual: (codes used as available from UN/EDIFACT version D.15B or current directory.)

### **EQD group segments additions:**

MEA – Measurements

**VGM** – Verified Gross Mass (weight)

NAD – Name and Address

**AM** – Authorized official – person signing for Verified Gross Mass

**SPC** – SOLAS Packed Container Verified Gross Mass Responsible party

DTM – Date/Time

**798** - Verified gross mass determination date/time - Date/Time when a gross mass (weight) of a packed container was obtained according to SOLAS chapter VI, regulation 2, paragraphs 4-6

FTX – Free text (ABS) container condition – SMDG maintained codes

**SM1** – Solas Method 1 – Verified Gross Mass obtained by weighing

**SM2** – Solas Method 2 – Verified Gross Mass obtained by calculation

RFF – References

**VGR** – Verified Gross Mass Reference – link to VGM information

**VOR** – Verified Gross Mass Order Reference – embedded instruction to obtain VGM



# COPARN - Container Announcement Message

## Introduction:

The message contains an order to release, to make available, to accept or to call down containers or to announce the impending arrival of containers.

This message is part of a total set of container-related messages. These messages serve to facilitate the intermodal handling of containers by streamlining the information exchange. The business scenario for the container messages is clarified in a separate document, called: 'Guide to the scenario of EDIFACT container messages'.

The order may pertain to cargo related containers (full container load and less than container load), the arrangement of empty containers prior to loading and after stripping, as well as the arrangements for leasing the empty containers (on- hire and off-hire of containers).

	<b>Pos. No.</b>	<b>Seg. ID</b>	<b>Name</b>	<b>Req. Des.</b>	<b>Max.Use</b>	<b>Group Repeat</b>	<b>Notes and Comments</b>
M	0010	UNH	Message Header	M	1		
M	0020	BGM	Beginning of Message	M	1		
R	0040	DTM	Date/Time/Period	C	9		
O	0080		Segment Group 1: RFF-DTM	C		9	
M	0090	RFF	Reference	M	1		
O	0100	DTM	Date/Time/Period	C	9		
O	0110		Segment Group 2: TDT-RFF-SG3	C		9	
M	0120	TDT	Details of Transport	M	1		
O	0140	RFF	Reference	C	9		
O	0150		Segment Group 3: LOC-DTM	C		9	
M	0160	LOC	Place/Location Identification	M	1		
O	0170	DTM	Date/Time/Period	C	9		
M	0180		Segment Group 4: NAD-SG5	M		9	
M	0190	NAD	Name and Address	M	1		
O	0200		Segment Group 5: CTA-COM	C		9	
M	0210	CTA	Contact Information	M	1		
O	0220	COM	Communication Contact	C	9		
M	0540		Segment Group 13: EQD-RFF-EQN-TMD-DTM-LOC-MEA-DIM-SG14-SEL-FTX-SG15-EQA-HAN-SG18-SG20	M		9999	
M	0550	EQD	Equipment Details	M	1		
R	0560	RFF	Reference	C	9		
O	0570	EQN	Number of Units	C	1		
O	0580	TMD	Transport Movement Details	C	9		
O	0590	DTM	Date/Time/Period	C	9		
R	0610	LOC	Place/Location Identification	C	9		
O	0620	MEA	Measurements	C	9		
O	0630	DIM	Dimensions	C	9		

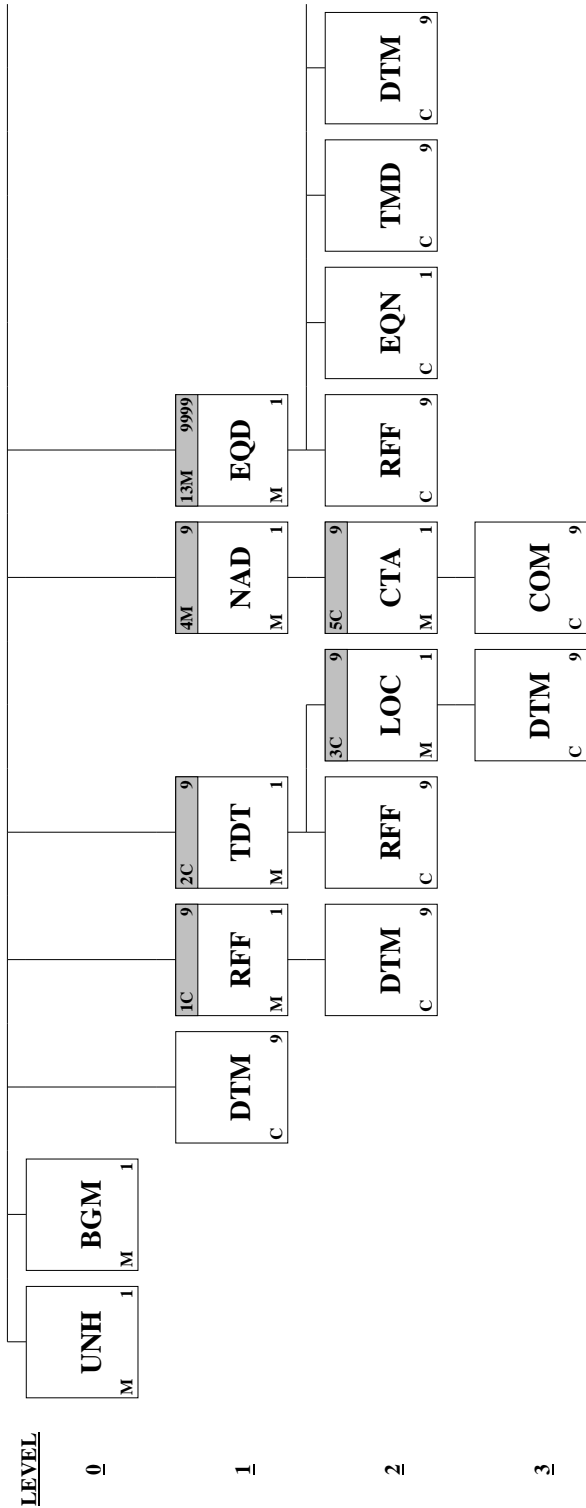




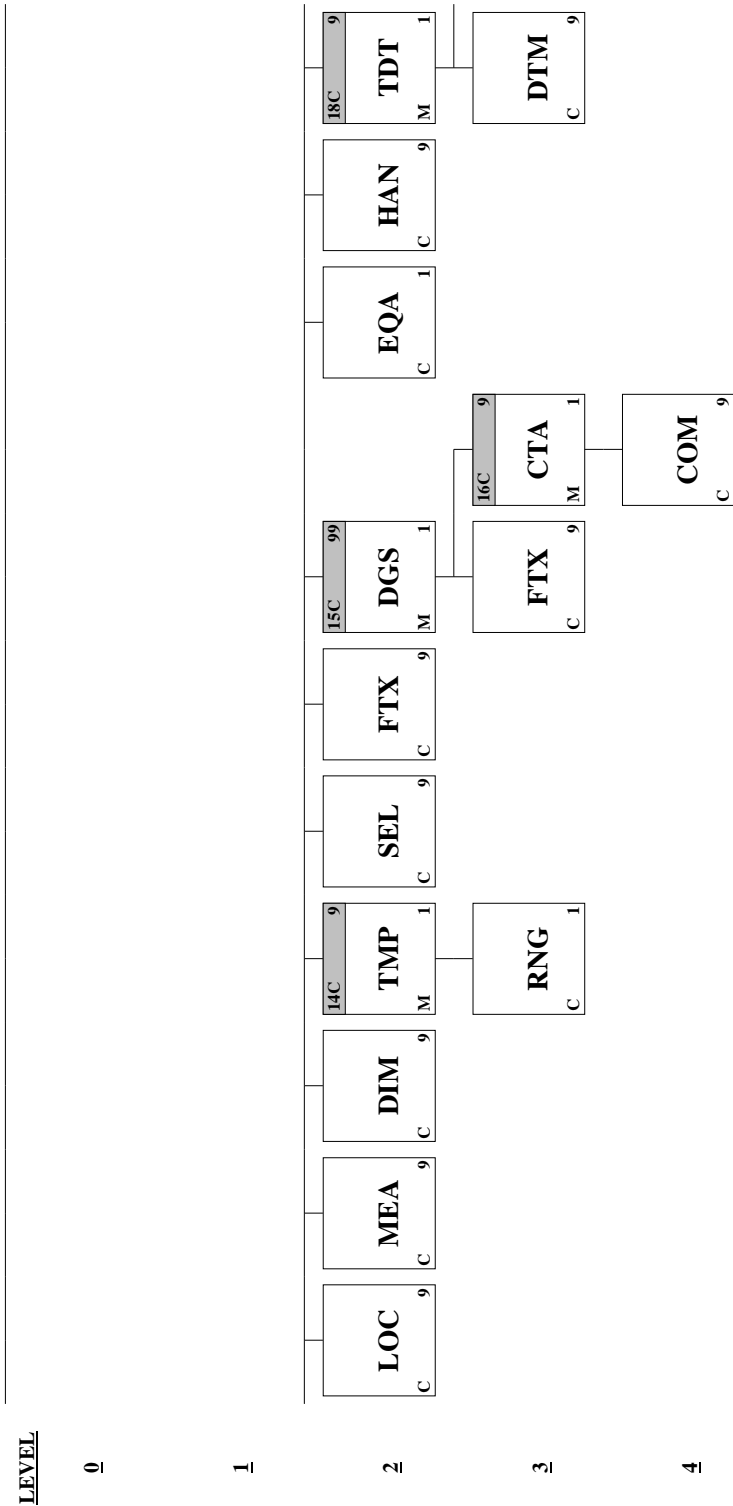
O	0640		Segment Group 14: TMP-RNG	C	9
M	0650	TMP	Temperature	M	1
O	0660	RNG	Range Details	C	1
O	0670	SEL	Seal Number	C	9
O	0680	FTX	Free Text	C	9
O	0700		Segment Group 15: DGS-FTX-SG16	C	99
M	0710	DGS	Dangerous Goods	M	1
O	0720	FTX	Free Text	C	9
O	0740		Segment Group 16: CTA-COM	C	9
M	0750	CTA	Contact Information	M	1
O	0760	COM	Communication Contact	C	9
O	0790	EQA	Attached Equipment	C	1
O	0810	HAN	Handling Instructions	C	9
O	0850		Segment Group 18: TDT-DTM-SG19	C	9
M	0860	TDT	Details of Transport	M	1
O	0870	DTM	Date/Time/Period	C	9
R	0880		Segment Group 19: LOC	C	9
M	0890	LOC	Place/Location Identification	M	1
O	0910		Segment Group 20: NAD	C	9
M	0920	NAD	Name and Address	M	1
R	0970	CNT	Control Total	C	1
M	0980	UNT	Message Trailer	M	1

Segments not used are not present in this list

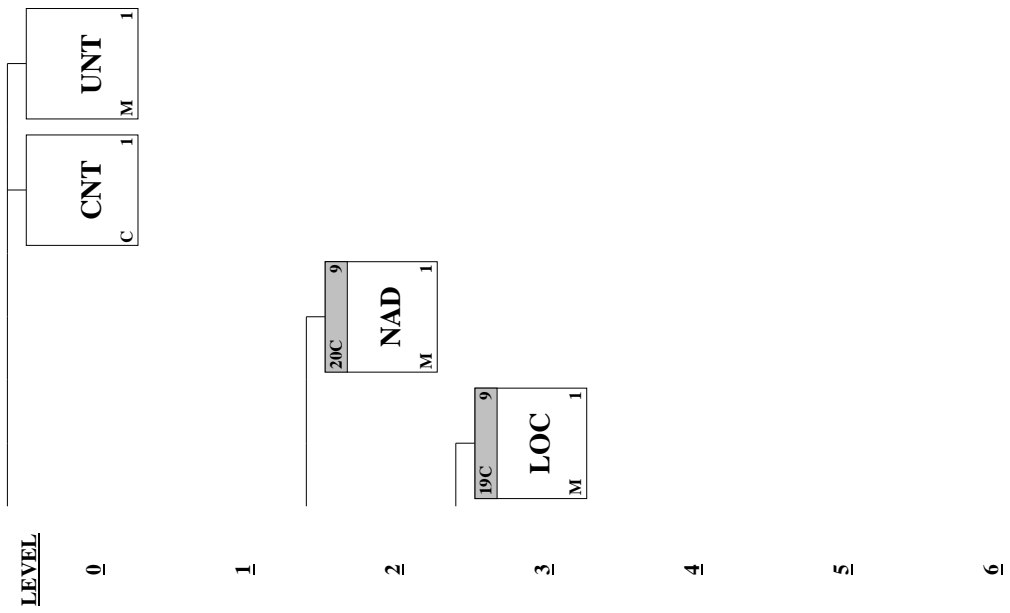
# SMDG



# SMDG



# SMDG





**Segment:** UNH Message Header

**Position:** 0010

**Group:**

**Level:** 0

**Usage:** Mandatory

**Max Use:** 1

**Purpose:** A service segment starting and uniquely identifying a message. The message type code for the Container announcement message is COPARN.

Note: Container announcement messages conforming to this document must contain the following data in segment UNH, composite S009:

Data element 0065 COPARN 0052 D 0054 00B 0051 UN

**Comments:**

**Notes:** *Sample segment :*

*UNH+0000000006944+COPARN:D:00B:UN:SMDG21'*

**Data Element Summary**

	<u>Data Element</u>	<u>Component Element</u>	<u>Name</u>	<u>Attributes</u>
M	0062		MESSAGE REFERENCE NUMBER <i>Unique message reference assigned by the sender. This reference must also be transmitted in the UNT segment.</i>	M 1 an..14
M	S009		MESSAGE IDENTIFIER	M 1
M		0065	Message type identifier <i>COPARN Container announcement message</i>	M an..6
M		0052	Message type version number <i>D Draft version/UN/EDIFACT Directory</i>	M an..3
M		0054	Message type release number <i>00B Release 2000 - B</i>	M an..3
M		0051	Controlling agency <i>UN UN/CEFACT</i>	M an..2
R		0057	Association assigned code <i>SMDG21 SMDG Version 2.1</i>	C an..6
O	0068		COMMON ACCESS REFERENCE <i>Additional message reference (if required)</i>	C 1 an..35
X	S010		STATUS OF THE TRANSFER	C 1
X		0070	Sequence message transfer number	M n..2
X		0073	First/last sequence message transfer indication	C a1



**Segment:** **BGM** Beginning of Message  
**Position:** 0020  
**Group:**  
**Level:** 0  
**Usage:** Mandatory  
**Max Use:** 1  
**Purpose:** A segment to indicate the beginning of a message and to transmit identifying number and further specification of the message type (in data element 1001: Document name code), such as Empty container disposition order, Release order, Pre-arrival notice, Acceptance order, Empty container notice, Call-down order, On-hire request, On-hire order, Off-hire request, Off-hire notice.

**Comments:**  
**Notes:** *Sample segment :*  
**BGM+126+800255846+9+AB'**

**Data Element Summary**

	<u>Data Element</u>	<u>Component Element</u>	<u>Name</u>	<u>Attributes</u>
R	C002		DOCUMENT/MESSAGE NAME	C 1
R		1001	Document name code	C an..3
			104 <i>Transport equipment impending arrival advice</i>	
			108 <b><i>Transport equipment empty release instruction</i></b>	
			125 <i>Transport empty equipment advice</i>	
			126 <b><i>Transport equipment acceptance order</i></b>	
			127 <i>Transport equipment special service instruction</i>	
			134 <i>Transport equipment on-hire request</i>	
			135 <i>Transport equipment on-hire order</i>	
			136 <i>Transport equipment off-hire request</i>	
			144 <i>Empty container disposition order</i>	
			170 <i>Cargo acceptance order</i>	
			264 <i>Transport equipment movement instruction</i>	
X		1131	Code list identification code	C an..17
X		3055	Code list responsible agency code	C an..3
X		1000	Document name	C an..35
R	C106		DOCUMENT/MESSAGE IDENTIFICATION	C 1
R		1004	Document identifier	C an..35
			<b><i>Sender's unique reference number</i></b>	
X		1056	Version identifier	C an..9
X		1060	Revision identifier	C an..6
R	1225		MESSAGE FUNCTION CODE	C 1 an..3
			<b><i>If code 1 or 5 is used, reference number of the message which is being cancelled/replaced must appear in the header level RFF using the code ACW in e1153.</i></b>	
			1 <i>Cancellation</i>	



---

		5	<i>Replace</i>		
		9	<i>Original</i>		
<b>O</b>	<b>4343</b>	<b>RESPONSE TYPE CODE</b>		<b>C</b>	<b>1 an..3</b>
		<i>AB</i>	<i>Message acknowledgement</i>		



**Segment:** **DTM** Date/Time/Period  
**Position:** 0040  
**Group:**  
**Level:** 1  
**Usage:** Conditional (Required)  
**Max Use:** 9  
**Purpose:** A segment to indicate a date and time applying the message as a whole: - requested equipment positioning date and/or time - expected on-hire date and/or time - expected return period  
**Comments:**  
**Notes:** *Sample segment :*  
*DTM+137:200211211523:203'*

**Data Element Summary**

	<u>Data Element</u>	<u>Component Element</u>	<u>Name</u>	<u>Attributes</u>
M	C507		DATE/TIME/PERIOD	M 1
M		2005	Date or time or period function code qualifier <i>137 Document/message date/time</i>	M an..3
R		2380	Date or time or period value <i>Date/time that the message was prepared.</i>	C an..35
R		2379	Date or time or period format code <i>203 CCYYMMDDHHMM</i>	C an..3





**Segment:** **RFF** Reference  
**Position:** 0090 (Trigger Segment)  
**Group:** Segment Group 1 (Reference)      Conditional (Optional)  
**Level:** 1  
**Usage:** Mandatory  
**Max Use:** 1  
**Purpose:** A segment to express a reference which applies to the entire message, such as: - container announcement reference number - booking reference number - reference to previous message - lessee's reference - lessor's reference - lease contract reference - return reference (of the party returning on hire equipment) - collect reference (of party collecting specified leased equipment) - carrier's agent reference number

**Comments:**

**Notes:** *Sample segment :*  
*RFF+ATX:800255846'*

**Data Element Summary**

	<u>Data Element</u>	<u>Component Element</u>	<u>Name</u>	<u>Attributes</u>
M	C506		REFERENCE	M 1
M		1153	Reference code qualifier	M an..3
			AAY	Carrier's agent reference number
			ACA	Cargo acceptance order reference number
			ACW	Reference number to previous message
			AKA	Container disposition order reference number
			ARJ	Personal identity card number
			ATX	Transport equipment acceptance order reference
			ATY	Transport equipment release order reference
			BM	Bill of lading number
			BN	Booking reference number
			CN	Carrier's reference number
			RE	Release number
R		1154	Reference identifier <i>Reference number</i>	C an..70
X		1156	Document line identifier	C an..6
X		4000	Reference version identifier	C an..35
X		1060	Revision identifier	C an..6



**Segment:** **DTM** Date/Time/Period  
**Position:** 0100  
**Group:** Segment Group 1 (Reference) Conditional (Optional)  
**Level:** 2  
**Usage:** Conditional (Optional)  
**Max Use:** 9  
**Purpose:** A segment to indicate date and/or time related to the reference.

**Comments:**

**Notes:** *Sample segment :*  
*DTM+36:200211301200:203'*

**Data Element Summary**

	<u>Data Element</u>	<u>Component Element</u>	<u>Name</u>	<u>Attributes</u>
M	C507		DATE/TIME/PERIOD	M 1
M		2005	Date or time or period function code qualifier	M an..3
			7 <i>Effective date/time</i>	
			36 <i>Expiry date</i>	
			203 <i>Execution date/time, requested</i>	
R		2380	Date or time or period value	C an..35
			<i>Date or date/time</i>	
R		2379	Date or time or period format code	C an..3
			102 <i>CCYMMDD</i>	
			203 <i>CCYMMDDHHMM</i>	



**Segment:** **TDT** Details of Transport  
**Position:** 0120 (Trigger Segment)  
**Group:** Segment Group 2 (Details of Transport) Conditional (Optional)  
**Level:** 1  
**Usage:** Mandatory  
**Max Use:** 1  
**Purpose:** A segment to indicate information related to the main carriage stage of the transport (sea), such as voyage number or indication sea transport, vessel and carrier or liner. Information on related inland transport stage(s) can also be included, such as mode of inland transport, means of transport, and inland carrier, such as: - main-carriage transport (sea) - pre- or on-carriage transport - second pre- or on-carriage transport

**Comments:**

**Notes:** *Sample segment :*  
**TDT+20+048R+1++MSC:172:SMD+++7104673:146:11:MSC CLAUDIA:PA'**

**Data Element Summary**

	Data Element	Component Element	Name	Attributes
M	8051		TRANSPORT STAGE CODE QUALIFIER 20 Main-carriage transport	M 1 an..3
O	8028		MEANS OF TRANSPORT JOURNEY IDENTIFIER Vessel operator's voyage number	C 1 an..17
R	C220		MODE OF TRANSPORT	C 1
R		8067	Transport mode name code 1 Maritime transport (ocean)	C an..3
X		8066	Transport mode name	C an..17
O	C228		TRANSPORT MEANS	C 1
O		8179	Transport means description code Means of transport code (UN/ECE Recommendation 28)	C an..8
O		8178	Transport means description Type of means of transport (free text)	C an..17
R	C040		CARRIER	C 1
R		3127	Carrier identifier Vessel operator's code	C an..17
O		1131	Code list identification code 172 Carriers	C an..17
O		3055	Code list responsible agency code 20 BIC (Bureau International des Containeurs) 87 Assigned by carrier 166 US, National Motor Freight Classification Association 184 AU, ACOS (Australian Chamber of Shipping) SMD SMDG (Shipplanning Message Development Group)	C an..3



		<i>Temporary code</i>			
		<i>ZZZ</i>	<i>Mutually defined</i>		
O		3128	Carrier name <i>Vessel operator's name (free text)</i>	C	an..35
X	8101		TRANSIT DIRECTION INDICATOR CODE	C	1 an..3
X	C401		EXCESS TRANSPORTATION INFORMATION	C	1
X		8457	Excess transportation reason code	M	an..3
X		8459	Excess transportation responsibility code	M	an..3
X		7130	Customer shipment authorisation identifier	C	an..17
O	C222		TRANSPORT IDENTIFICATION	C	1
O		8213	Transport means identification name identifier <i>Lloyd's (IMO) number</i>	C	an..9
<i>Either this element or the Group 2 RFF must be used to specify a vessel id.</i>					
O		1131	Code list identification code <i>146 Means of transport identification</i>	C	an..17
O		3055	Code list responsible agency code <i>11 Lloyd's register of shipping</i>	C	an..3
O		8212	Transport means identification name <i>Vessel name (free text)</i>	C	an..35
O		8453	Transport means nationality code <i>Flag of means of transport (ISO country code)</i>	C	an..3
X	8281		TRANSPORT MEANS OWNERSHIP INDICATOR CODE	C	1 an..3



**Segment:** **RFF** Reference  
**Position:** 0140  
**Group:** Segment Group 2 (Details of Transport) Conditional (Optional)  
**Level:** 2  
**Usage:** Conditional (Optional)  
**Max Use:** 9  
**Purpose:** A segment to provide a reference for the liner service, such as: - conference - marketing organization - syndicate - vessel sharing agreement

**Comments:**

**Notes:** *Sample segment :*  
*RFF+VM:3EQZ6'*

**Data Element Summary**

	<u>Data Element</u>	<u>Component Element</u>	<u>Name</u>	<u>Attributes</u>
M	C506		REFERENCE	M 1
M		1153	Reference code qualifier	M an..3
			ATZ Ship's stay reference number	
			MA Ship notice/manifest number	
			VM Vessel identification	
			VON Voyage number	
R		1154	Reference identifier	C an..70
			<i>Callsign (if C506.e1153 = 'VM')</i>	
			<i>Alternative (non vessel operator's) voyage number (if C506.e1153 = 'VON' )</i>	
			<i>Manifest number (if C506.e1153 = 'MA')</i>	
			<i>Other reference (if C506.e1153 = 'ATZ')</i>	
X		1156	Document line identifier	C an..6
X		4000	Reference version identifier	C an..35
X		1060	Revision identifier	C an..6



**Segment:** **LOC** Place/Location Identification  
**Position:** 0160 (Trigger Segment)  
**Group:** Segment Group 3 (Place/Location Identification) Conditional (Optional)  
**Level:** 2  
**Usage:** Mandatory  
**Max Use:** 1  
**Purpose:** A segment to specify a location associated with a transport stage such as final port or place of discharge or loading.

**Comments:**

**Notes:** *Sample segment :*  
**LOC+9+AUMEL:139:6:MELBOURNE+CONWS:72:SMD:P&O PORTS'**

**Data Element Summary**

	<u>Data Element</u>	<u>Component Element</u>	<u>Name</u>	<u>Attributes</u>
M	3227		LOCATION FUNCTION CODE QUALIFIER	M 1 an..3
			9 Place/port of loading	
			11 Place/port of discharge	
R	C517		LOCATION IDENTIFICATION	C 1
O		3225	Location name code	C an..25
			<b>UNLOCODE</b>	
O		1131	Code list identification code	C an..17
			139 Port	
O		3055	Code list responsible agency code	C an..3
			6 UN/ECE (United Nations - Economic Commission for Europe)	
O		3224	Location name	C an..256
			<i>Port name (free text)</i>	
O	C519		RELATED LOCATION ONE IDENTIFICATION	C 1
O		3223	First related location name code	C an..25
			<i>1st related location code</i>	
O		1131	Code list identification code	C an..17
			72 Container terminal	
			266 Marine berth	
			267 Marine wharf	
O		3055	Code list responsible agency code	C an..3
			9 EAN (International Article Numbering association)	
			184 AU, ACOS (Australian Chamber of Shipping)	
			SMD SMDG (Shipplanning Message Development Group)	
			<b>Temporary code</b>	
			ZZZ Mutually defined	
O		3222	First related location name	C an..70
			<i>1st related location name (free text)</i>	
O	C553		RELATED LOCATION TWO IDENTIFICATION	C 1



O		3233	Second related location name code <i>2nd related location code</i>	C	an..25
O		1131	Code list identification code 72 Container terminal 266 Marine berth 267 Marine wharf	C	an..17
O		3055	Code list responsible agency code 9 EAN (International Article Numbering association) 184 AU, ACOS (Australian Chamber of Shipping) SMD SMDG (Shipplanning Message Development Group) <b>Temporary code</b> ZZZ Mutually defined	C	an..3
O		3232	Second related location name <i>2nd related location name (free text)</i>	C	an..70
X	5479		RELATION CODE	C	1 an..3



**Segment:** **DTM** Date/Time/Period  
**Position:** 0170  
**Group:** Segment Group 3 (Place/Location Identification) Conditional (Optional)  
**Level:** 3  
**Usage:** Conditional (Optional)  
**Max Use:** 9  
**Purpose:** A segment to specify date(s) and time(s) related to a location.

**Comments:**

**Notes:** *Sample segment :*  
*DTM+132:200212290600:203'*

**Data Element Summary**

	<u>Data Element</u>	<u>Component Element</u>	<u>Name</u>	<u>Attributes</u>
M	C507		DATE/TIME/PERIOD	M 1
M		2005	Date or time or period function code qualifier	M an..3
			132 <i>Arrival date/time, estimated</i>	
			133 <i>Departure date/time, estimated</i>	
			178 <i>Arrival date/time, actual</i>	
			186 <i>Departure date/time, actual</i>	
R		2380	Date or time or period value	C an..35
			<i>Arrival/departure date/time</i>	
R		2379	Date or time or period format code	C an..3
			203 <i>CCYYMMDDHHMM</i>	





**Segment:** **NAD** Name and Address  
**Position:** 0190 (Trigger Segment)  
**Group:** Segment Group 4 (Name and Address) Mandatory  
**Level:** 1  
**Usage:** Mandatory  
**Max Use:** 1  
**Purpose:** A segment to identify the party's name and address, and function, and other addresses, such as: - ordering customer - ordering customer agent - message recipient - message sender - place of positioning - place of collection - final place of positioning - carrier agent (sea) - charges payer - place of acceptance name and address - invoicee - stripping address - return address - on hire party direct interchange - off hire party direct interchange - container survey agency

**Comments:**

**Notes:** *Sample segment :*  
*NAD+MS+PON:172:20'*

**Data Element Summary**

	<u>Data Element</u>	<u>Component Element</u>	<u>Name</u>	<u>Attributes</u>
M	3035		<b>PARTY FUNCTION CODE QUALIFIER</b>	M 1 an..3
			CA Carrier	
			CB Customs broker	
			CF Container operator/lessee	
			CPD Charges payer at destination	
			FW Freight forwarder	
			HA Party which delivers consignments to the terminal	
			HR Shipping line service	
			MR Message recipient	
			MS Document/message issuer/sender	
			OY Ordering customer	
			<b>Delivery subcontractor</b>	
O	C082		<b>PARTY IDENTIFICATION DETAILS</b>	C 1
M		3039	<b>Party identifier</b>	M an..35
			<b>Company code</b>	
O		1131	<b>Code list identification code</b>	C an..17
			160 Party identification	
			172 Carriers	
O		3055	<b>Code list responsible agency code</b>	C an..3
			7 CEFIC (Conseil Europeen des Federations de l'Industrie Chimique)	
			9 EAN (International Article Numbering association)	
			10 ODETTE	



		16	US, D&B (Dun & Bradstreet Corporation)		
		20	BIC (Bureau International des Containeurs)		
		87	Assigned by carrier		
		163	US, FMC (Federal Maritime Commission)		
		166	US, National Motor Freight Classification Association		
		184	AU, ACOS (Australian Chamber of Shipping)		
		SMD	SMDG (Shipplanning Message Design Group)		
			<b>Temporary code</b>		
		ZZZ	Mutually defined		
O	C058		<b>NAME AND ADDRESS</b>	C	1
			<i>The use of C058 is allowed to accomodate specific local requirements that exist in several ports. The use of C058 however is in general not recommended - whenever possible it is suggested to use C082 instead.</i>		
M		3124	Name and address description	M	an..35
O		3124	Name and address description	C	an..35
O		3124	Name and address description	C	an..35
O		3124	Name and address description	C	an..35
O		3124	Name and address description	C	an..35
X	C080		PARTY NAME	C	1
X		3036	Party name	M	an..35
X		3036	Party name	C	an..35
X		3036	Party name	C	an..35
X		3036	Party name	C	an..35
X		3036	Party name	C	an..35
X		3045	Party name format code	C	an..3
X	C059		STREET	C	1
X		3042	Street and number or post office box identifier	M	an..35
X		3042	Street and number or post office box identifier	C	an..35
X		3042	Street and number or post office box identifier	C	an..35
X		3042	Street and number or post office box identifier	C	an..35
X	3164		CITY NAME	C	1 an..35
X	C819		COUNTRY SUB-ENTITY DETAILS	C	1
X		3229	Country sub-entity name code	C	an..9
X		1131	Code list identification code	C	an..17
X		3055	Code list responsible agency code	C	an..3
X		3228	Country sub-entity name	C	an..35
X	3251		POSTAL IDENTIFICATION CODE	C	1 an..17
X	3207		COUNTRY NAME CODE	C	1 an..3



**Segment:** **CTA** Contact Information  
**Position:** 0210 (Trigger Segment)  
**Group:** Segment Group 5 (Contact Information) Conditional (Optional)  
**Level:** 2  
**Usage:** Mandatory  
**Max Use:** 1  
**Purpose:** A segment to identify a person or department of a message sender and/or message recipient, such as: - information contact  
**Comments:**  
**Notes:** *Sample segment :*  
*CTA+IC+:STAN MATTHEWS'*

**Data Element Summary**

	<u>Data Element</u>	<u>Component Element</u>	<u>Name</u>	<u>Attributes</u>
R	3139		<b>CONTACT FUNCTION CODE</b> <i>IC Information contact</i>	C 1 an..3
R	C056		<b>DEPARTMENT OR EMPLOYEE DETAILS</b>	C 1
X		3413	<i>Department or employee name code</i>	C an..17
R		3412	<b>Department or employee name</b> <i>Contact name</i>	C an..35



**Segment:** **COM** Communication Contact  
**Position:** 0220  
**Group:** Segment Group 5 (Contact Information) Conditional (Optional)  
**Level:** 3  
**Usage:** Conditional (Optional)  
**Max Use:** 9  
**Purpose:** A segment to identify a communication number of a person or department to whom communication should be directed.

**Comments:**

**Notes:** *Sample segment :*  
*COM+0198562395:TE'*

**Data Element Summary**

	<u>Data Element</u>	<u>Component Element</u>	<u>Name</u>	<u>Attributes</u>
M	C076		COMMUNICATION CONTACT	M 3
M		3148	Communication address identifier <i>Contact number</i>	M an..512
M		3155	Communication address code qualifier	M an..3
			<i>EM Electronic mail</i>	
			<i>FX Telefax</i>	
			<i>TE Telephone</i>	
			<i>TL Telex</i>	
			<i>XF X.400 address</i>	



**Segment:** **EQD** Equipment Details  
**Position:** 0550 (Trigger Segment)  
**Group:** Segment Group 13 (Equipment Details) Mandatory  
**Level:** 1  
**Usage:** Mandatory  
**Max Use:** 1  
**Purpose:** A segment to specify a container, container size and type, and full/empty indication; also to specify the type of rail car on which a related container is transported.

**Comments:**

**Notes:** *Sample segment :*  
*EQD+CN++4532:102:5+2+2+5'*

**Data Element Summary**

	<u>Data Element</u>	<u>Component Element</u>	<u>Name</u>	<u>Attributes</u>
M	8053		<b>EQUIPMENT TYPE CODE QUALIFIER</b>	M 1 an..3
			<i>BB Break bulk</i>	
			<b>Temporary code</b>	
			<i>BPP Truck and trailer combination being transported</i>	
			<i>CH Chassis</i>	
			<i>CN Container</i>	
			<i>RG Reefer generator</i>	
			<b>Power pack</b>	
			<i>SW Swap body</i>	
			<i>TE Trailer</i>	
O	C237		<b>EQUIPMENT IDENTIFICATION</b>	C 1
R		8260	<b>Equipment identifier</b>	C an..17
			<i>Marks (letters/numbers) identifying equipment. To be transmitted as they appear on the equipment.</i>	
X		1131	<b>Code list identification code</b>	C an..17
X		3055	<b>Code list responsible agency code</b>	C an..3
X		3207	<b>Country name code</b>	C an..3
D	C224		<b>EQUIPMENT SIZE AND TYPE</b>	C 1
O		8155	<b>Equipment size and type description code</b>	C an..10
			<i>Equipment size/type code as per ISO6346 (.1 or.2, .2 preferred)</i>	
O		1131	<b>Code list identification code</b>	C an..17
			<i>102 Size and type</i>	
O		3055	<b>Code list responsible agency code</b>	C an..3
			<i>5 ISO (International Organization for Standardization)</i>	
O		8154	<b>Equipment size and type description</b>	C an..35
			<i>Equipment size/type (free text)</i>	
O	8077		<b>EQUIPMENT SUPPLIER CODE</b>	C 1 an..3
			<i>1 Shipper supplied</i>	



---

		2	<i>Carrier supplied</i>		
		5	<i>Third party supplied</i>		
<b>O</b>	<b>8249</b>	<b>EQUIPMENT STATUS CODE</b>		<b>C</b>	<b>1 an..3</b>
		1	<i>Continental</i>		
		2	<i>Export</i>		
		3	<i>Import</i>		
		6	<i>Transshipment</i>		
		10	<i>Positioning</i>		
		11	<i>Delivery</i>		
		12	<i>Redelivery</i>		
		13	<i>Repair</i>		
<b>R</b>	<b>8169</b>	<b>FULL OR EMPTY INDICATOR CODE</b>		<b>C</b>	<b>1 an..3</b>
		4	<i>Empty</i>		
		5	<i>Full</i>		
		6	<i>No volume available</i>		
			<b><i>To be used in case of break bulk</i></b>		



**Segment:** **RFF** Reference  
**Position:** 0560  
**Group:** Segment Group 13 (Equipment Details) Mandatory  
**Level:** 2  
**Usage:** Conditional (Required)  
**Max Use:** 9  
**Purpose:** A segment to express a reference which applies to the particular container, such as: - container sequence number - lower equipment serial number of range - upper equipment serial number of range - referring sequence number - reference at place of positioning - reference at place of collection - related container announcement reference (reference to Empty container disposition order) - transport costs reference number - carrier agent's reference number - freight forwarder's reference

**Comments:**

**Notes:** *Sample segment :*  
*RFF+SQ:1'*

**Data Element Summary**

	<u>Data Element</u>	<u>Component Element</u>	<u>Name</u>	<u>Attributes</u>
M	C506		REFERENCE	M 1
M		1153	Reference code qualifier	M an..3
			AAE	Goods declaration number
			AAO	Consignee's shipment reference number
			AAY	Carrier's agent reference number
			ABT	Customs declaration number
			ABZ	Vehicle licence number
			ACD	Additional reference number
			AHI	Transport contract reference number
			AKB	Container prefix
			AKG	Vehicle Identification Number (VIN)
			AKW	Transport costs reference number
			ARJ	Personal identity card number
			ATW	Flat rack container bundle identification number
			AUA	Place of positioning reference
			BM	Bill of lading number
			BN	Booking reference number
			BST	Blockstow reference
			<b>Temporary code</b>	
			BT	Batch number/lot number
			CN	Carrier's reference number
			CT	Contract number
			CU	Consignor's reference number
			CV	Container operators reference number



DR	Dock receipt number
EQ	Equipment number <b>To be used in the event that an alternative equipment number is to be quoted in addition to the number in the EQD</b>
ER	Container/equipment receipt number
MKS	Marks and numbers
RE	Release number
SQ	Equipment sequence number
TF	Transfer number
UCN	Unique consignment reference number
VN	Order number (vendor)
VT	Motor vehicle identification number
VGR	Transport equipment gross mass verification reference number <b>Code as available from version D.15B: Identification reference to documentation of transport equipment gross mass (weight) verification</b>
VOR	Transport equipment gross mass verification order reference number <b>Code as available from version D.15B: A specific Transport equipment gross mass (weight) verification order send by the customer/shipping line (e.g. response to COHAOR)</b>

R	1154	Reference identifier <b>Reference number</b>	C	an..70
X	1156	Document line identifier	C	an..6
X	4000	Reference version identifier	C	an..35
X	1060	Revision identifier	C	an..6





**Segment:** **EQN** Number of Units  
**Position:** 0570  
**Group:** Segment Group 13 (Equipment Details) Mandatory  
**Level:** 2  
**Usage:** Conditional (Optional)  
**Max Use:** 1  
**Purpose:** A segment to specify the number of containers of the same size and type in case of equipment guidelines.  
**Comments:**  
**Notes:** *Sample segment :*  
*EQN+1'*

**Data Element Summary**

	<u>Data Element</u>	<u>Component Element</u>	<u>Name</u>	<u>Attributes</u>
M	C523		NUMBER OF UNIT DETAILS	M 1
R		6350	Units quantity <i>Number of units</i>	C n..15
X		6353	Unit type code qualifier	C an..3



**Segment:** **TMD** Transport Movement Details  
**Position:** 0580  
**Group:** Segment Group 13 (Equipment Details) Mandatory  
**Level:** 2  
**Usage:** Conditional (Optional)  
**Max Use:** 9  
**Purpose:** A segment to indicate a Full Container Load (FCL) or a Less than Full Container Load (LCL).  
**Comments:**  
**Notes:** *Sample segment :*  
*TMD+3++2'*

**Data Element Summary**

	<u>Data Element</u>	<u>Component Element</u>	<u>Name</u>	<u>Attributes</u>
R	C219		<b>MOVEMENT TYPE</b>	C 1
R		8335	<b>Movement type description code</b>	C an..3
		2	LCL/LCL = Pier/Pier = CFS/CFS	
		3	FCL/FCL = House/House = CY/CY	
		4	FCL/LCL = House/Pier = CY/CFS	
		5	LCL/FCL = Pier/House = CFS/CY	
X		8334	<b>Movement type description</b>	C an..35
X	8332		<b>EQUIPMENT PLAN DESCRIPTION</b>	C 1 an..26
O	8341		<b>HAULAGE ARRANGEMENTS CODE</b>	C 1 an..3
		1	Carrier	
		2	Merchant	



**Segment:** **DTM** Date/Time/Period  
**Position:** 0590  
**Group:** Segment Group 13 (Equipment Details) Mandatory  
**Level:** 2  
**Usage:** Conditional (Optional)  
**Max Use:** 9  
**Purpose:** A segment to indicate a date and time relating to the container, such as: - estimated positioning date/time - ultimate release date/time - expected on-hire date and/or time

**Comments:**

**Notes:** *Sample segment :*  
**DTM+201:200211211700:203'**

**Data Element Summary**

	<u>Data Element</u>	<u>Component Element</u>	<u>Name</u>	<u>Attributes</u>
M	C507		DATE/TIME/PERIOD	M 1
M		2005	Date or time or period function code qualifier	M an..3
			7 <i>Effective date/time</i>	
			36 <i>Expiry date</i>	
			94 <i>Production/manufacture date</i>	
			171 <i>Reference date/time</i>	
			181 <i>Positioning date/time of equipment</i>	
			201 <i>Pick-up date/time of equipment</i>	
			371 <i>Hydrotest date</i>	
			376 <i>Biannual terminal inspection date</i>	
			377 <i>Federal HighWay Administr. (FHWA) inspection date</i>	
			378 <i>Container Safety Convention (CSC) inspection date</i>	
			379 <i>Periodic inspection date</i>	
			395 <i>Equipment positioning date/time, estimated</i>	
			396 <i>Equipment positioning date/time, requested</i>	
			397 <i>Equipment positioning date/time, ultimate</i>	
			400 <i>Cargo release date/time, ultimate</i>	
			798 <i>Verified gross mass determination date/time</i>	
			<b>Code as available from version D.15B:</b>	
			<b>Date/Time when a gross mass (weight) of a packed container was obtained for verification according to SOLAS chapter VI, regulation 2, paragraphs 4-6</b>	
R		2380	Date or time or period value	C an..35
			<i>Date or date/time</i>	
R		2379	Date or time or period format code	C an..3
			102 <i>CCYYMMDD</i>	
			203 <i>CCYYMMDDHHMM</i>	



**Segment:** **LOC** Place/Location Identification  
**Position:** 0610  
**Group:** Segment Group 13 (Equipment Details) Mandatory  
**Level:** 2  
**Usage:** Conditional (Required)  
**Max Use:** 9  
**Purpose:** A segment to specify ports/locations associated with the sea transport of a container in case of export, such as: - place of discharge - transhipment place

**Comments:**

**Notes:** *Sample segment :*  
*LOC+11+ZACPT:139:6+CTCT:72:SMD+F-BERTH:266:ZZZ'*

**Data Element Summary**

	<u>Data Element</u>	<u>Component Element</u>	<u>Name</u>	<u>Attributes</u>
M	3227		<b>LOCATION FUNCTION CODE QUALIFIER</b>	M 1 an..3
			5 <i>Place of departure</i>	
			7 <i>Place of delivery</i>	
			8 <i>Place of destination</i>	
			9 <i>Place/port of loading</i>	
			11 <i>Place/port of discharge</i>	
			13 <i>Place of transhipment</i>	
			15 <i>Place of transfer responsibility</i>	
			33 <i>Baseport of discharge</i>	
			34 <i>Baseport of loading</i>	
			65 <i>Final port or place of discharge</i>	
			88 <i>Place of receipt</i>	
			98 <i>Place of empty equipment despatch</i>	
			147 <i>Stowage cell</i>	
			154 <i>Place/location of on-hire</i>	
			155 <i>Place/location of off-hire</i>	
			170 <i>Final port of discharge</i>	
			171 <i>Place of destination for pre-stacking prior to stowage</i>	
			175 <i>Activity location</i>	
R	C517		<b>LOCATION IDENTIFICATION</b>	C 1
O		3225	<b>Location name code</b>	C an..25
			<b>UNLOCODE</b>	
			<i>Stowage location (ISO format BBBRRTT) (if e3227 = 147)</i>	
O		1131	<b>Code list identification code</b>	C an..17
			139 <i>Port</i>	
O		3055	<b>Code list responsible agency code</b>	C an..3
			5 <i>ISO (International Organization for Standardization)</i>	



**Only to be used when e3227 = 147 (stowage cell)**

6

UN/ECE (United Nations - Economic Commission for Europe)

O		<b>3224</b>	<b>Location name</b>	<b>C</b>	<b>an..256</b>
			<i>Place/location name (free text)</i>		
O	<b>C519</b>		<b>RELATED LOCATION ONE IDENTIFICATION</b>	<b>C</b>	<b>1</b>
O		<b>3223</b>	<b>First related location name code</b>	<b>C</b>	<b>an..25</b>
			<i>1st related location code</i>		
O		<b>1131</b>	<b>Code list identification code</b>	<b>C</b>	<b>an..17</b>
			72 <i>Container terminal</i>		
			261 <i>Consignee's premises</i>		
			262 <i>Consignor's premises</i>		
			263 <i>Packing and/or unpacking facility</i>		
			264 <i>Storage facility</i>		
			265 <i>Repair facility</i>		
			266 <i>Marine berth</i>		
			267 <i>Marine wharf</i>		
			268 <i>Gate</i>		
			269 <i>Warehouse</i>		
O		<b>3055</b>	<b>Code list responsible agency code</b>	<b>C</b>	<b>an..3</b>
			9 <i>EAN (International Article Numbering association)</i>		
			184 <i>AU, ACOS (Australian Chamber of Shipping)</i>		
			SMD <i>SMDG (Shipplanning Message Development Group)</i>		
			<b>Temporary code</b>		
			ZZZ <i>Mutually defined</i>		
O		<b>3222</b>	<b>First related location name</b>	<b>C</b>	<b>an..70</b>
			<i>1st related location name (free text)</i>		
O	<b>C553</b>		<b>RELATED LOCATION TWO IDENTIFICATION</b>	<b>C</b>	<b>1</b>
O		<b>3233</b>	<b>Second related location name code</b>	<b>C</b>	<b>an..25</b>
			<i>2nd related location code</i>		
O		<b>1131</b>	<b>Code list identification code</b>	<b>C</b>	<b>an..17</b>
			5 <i>Facility identification</i>		
			72 <i>Container terminal</i>		
			261 <i>Consignee's premises</i>		
			262 <i>Consignor's premises</i>		
			263 <i>Packing and/or unpacking facility</i>		
			264 <i>Storage facility</i>		
			265 <i>Repair facility</i>		
			266 <i>Marine berth</i>		
			267 <i>Marine wharf</i>		
			268 <i>Gate</i>		
			269 <i>Warehouse</i>		
O		<b>3055</b>	<b>Code list responsible agency code</b>	<b>C</b>	<b>an..3</b>
			9 <i>EAN (International Article Numbering association)</i>		
			184 <i>AU, ACOS (Australian Chamber of Shipping)</i>		



---

		<i>SMD</i>	<i>SMDG (Shipplanning Message Development Group)</i>		
			<b>Temporary code</b>		
		<i>ZZZ</i>	<i>Mutually defined</i>		
<b>O</b>		<b>3232</b>	<b>Second related location name</b>	<b>C</b>	<b>an..70</b>
			<b>2nd related location name (free text)</b>		
<b>X</b>	<b>5479</b>		<b>RELATION CODE</b>	<b>C</b>	<b>1 an..3</b>



**Segment:** **MEA** Measurements  
**Position:** 0620  
**Group:** Segment Group 13 (Equipment Details) Mandatory  
**Level:** 2  
**Usage:** Conditional (Optional)  
**Max Use:** 9  
**Purpose:** A segment to specify measurement, other than dimensions, associated with the container, such as: - tare weight - gross weight

**Comments:**

**Notes:** *Sample segment :*  
**MEA+AAE+AET+KGM:10500'**

**Data Element Summary**

	<u>Data Element</u>	<u>Component Element</u>	<u>Name</u>	<u>Attributes</u>
M	6311		MEASUREMENT PURPOSE CODE QUALIFIER <i>AAE Measurement</i>	M 1 an..3
R	C502		MEASUREMENT DETAILS	C 1
R		6313	Measured attribute code	C an..3
			<i>AAL Net weight</i>	
			<i>AAO Humidity</i>	
			<b>Humidity setting in percentage.</b>	
			<i>AAS Air flow</i>	
			<b>Ventilation setting in cbm/hour</b>	
			<i>AAW Gross volume</i>	
			<i>ABJ Volume</i>	
			<i>AET Transport equipment gross weight</i>	
			<i>CD Carbondioxide</i>	
			<b>Carbondioxide setting in percentage</b>	
			<b>Temporary code</b>	
			<i>G Gross weight</i>	
			<i>MW Maximum weight</i>	
			<i>T Tare weight</i>	
			<i>ZO Oxygen</i>	
			<b>Oxygen setting in percentage</b>	
			<i>VGM Transport equipment verified gross mass (weight)</i>	
			<b>Code as available from version D.15B:</b>	
			<b>Transport equipment's gross mass (weight)</b>	
			<b>verified according to SOLAS Chapter VI, Regulation 2, paragraphs 4-6</b>	
X		6321	Measurement significance code	C an..3
X		6155	Non-discrete measurement name code	C an..17
X		6154	Non-discrete measurement name	C an..70
R	C174		VALUE/RANGE	C 1



<b>M</b>	<b>6411</b>	<b>Measurement unit code</b>	<b>M</b>	<b>an..3</b>
		<i>FTQ</i>		<i>Cubic Feet</i>
		<i>KGM</i>		<i>Kilograms</i>
		<i>LBR</i>		<i>Pounds</i>
		<i>MTQ</i>		<i>Cubic Metres</i>
		<i>PCT</i>		<i>Percentage</i>
<b>R</b>	<b>6314</b>	<b>Measurement value</b>	<b>C</b>	<b>an..18</b>
		<b><i>Weight, volume or percentage.</i></b>		
X	6162	Range minimum value	C	n..18
X	6152	Range maximum value	C	n..18
X	6432	Significant digits quantity	C	n..2
X	7383	SURFACE OR LAYER CODE	C	1 an..3





**Segment:** DIM Dimensions  
**Position:** 0630  
**Group:** Segment Group 13 (Equipment Details) Mandatory  
**Level:** 2  
**Usage:** Conditional (Optional)  
**Max Use:** 9  
**Purpose:** - off-standard dimensions, general - off-standard dimensions, front - off-standard dimensions, rear - off-standard dimensions, right - off-standard dimensions, left - off-standard dimensions, height - external equipment dimensions - dimensions equipment door - net dimensions

**Comments:**

**Notes:** *Sample segment :*  
*DIM+7+CMT::20'*

**Data Element Summary**

	<u>Data Element</u>	<u>Component Element</u>	<u>Name</u>	<u>Attributes</u>
M	6145		<b>DIMENSION TYPE CODE QUALIFIER</b>	M 1 an..3
			1 <i>Gross dimensions</i> <b>To be used for break bulk only</b>	
			5 <i>Off-standard dimension front</i>	
			6 <i>Off-standard dimension back</i>	
			7 <i>Off-standard dimension right</i>	
			8 <i>Off-standard dimension left</i>	
			10 <i>External equipment dimension</i> <b>To be used for non-ISO equipment only</b>	
			13 <i>Off-standard dimensions height</i>	
M	C211		<b>DIMENSIONS</b>	M 1
M		6411	<b>Measurement unit code</b>	M an..3
			CMT <i>Centimetres</i>	
			INH <i>Inches</i>	
D		6168	<b>Length dimension value</b>	C n..15
			<i>Overall length if e6145 = 1 or 10</i> <i>Overlength if e6145 = 5 or 6</i>	
D		6140	<b>Width dimension value</b>	C n..15
			<i>Overall width if e6145 = 1 or 10</i> <i>Overwidth if e6145 = 7 or 8</i>	
D		6008	<b>Height dimension value</b>	C n..15
			<i>Overall height if e6145 = 1 or 10</i> <i>Overheight if e6145 = 13</i>	



**Segment:** **TMP** Temperature  
**Position:** 0650 (Trigger Segment)  
**Group:** Segment Group 14 (Temperature)    Conditional (Optional)  
**Level:** 2  
**Usage:** Mandatory  
**Max Use:** 1  
**Purpose:** A segment to specify the transport temperature setting of a container.  
**Comments:**  
**Notes:** *Sample segment :*  
*TMP+2+011:CEL'*

*Only to be used when a set temperature is to be specified. When a temperature range is to be specified, the RNG segment must be used.*

**Data Element Summary**

	Data Component		Attributes
	<u>Element</u>	<u>Element Name</u>	
M	6245	TEMPERATURE TYPE CODE QUALIFIER 2 <i>Transport temperature</i>	M 1 an..3
R	C239	TEMPERATURE SETTING	C 1
R	6246	Temperature value <i>Temperature setting</i>	C n..15
R	6411	Measurement unit code CEL <i>Celsius</i> FAH <i>Fahrenheit</i>	C an..3



**Segment:** **RNG** Range Details  
**Position:** 0660  
**Group:** Segment Group 14 (Temperature) Conditional (Optional)  
**Level:** 3  
**Usage:** Conditional (Optional)  
**Max Use:** 1  
**Purpose:** A segment to specify the transport temperature range or the pre-tripping range of a container.

**Comments:**

**Notes:** *Sample segment :*  
*RNG+5+CEL:009:013'*

*Only to be used when a temperature range is to be specified. When a set temperature is to be specified, the TMP segment must be used.*

**Data Element Summary**

	<u>Data Element</u>	<u>Component Element</u>	<u>Name</u>	<u>Attributes</u>
M	6167		RANGE TYPE CODE QUALIFIER 5 <i>Temperature range</i>	M 1 an..3
R	C280		RANGE	C 1
M		6411	Measurement unit code CEL <i>Celsius</i> FAH <i>Fahrenheit</i>	M an..3
R		6162	Range minimum value <i>Minimum temperature</i>	C n..18
R		6152	Range maximum value <i>Maximum temperature</i>	C n..18



**Segment:** **SEL** Seal Number  
**Position:** 0670  
**Group:** Segment Group 13 (Equipment Details) Mandatory  
**Level:** 2  
**Usage:** Conditional (Optional)  
**Max Use:** 9  
**Purpose:** A segment to identify seal and seal issuer associated with the container, such as shipper, consolidator, carrier (sea) and Customs.

**Comments:**

**Notes:** *Sample segment :*  
*SEL+87579855+SH+1'*

**Data Element Summary**

	<u>Data Element</u>	<u>Component Element</u>	<u>Name</u>	<u>Attributes</u>
R	9308		SEAL IDENTIFIER <i>Seal number</i>	C 1 an..35
O	C215		SEAL ISSUER	C 1
R		9303	Sealing party name code AA <i>Consolidator</i> AB <i>Unknown</i> AC <i>Quarantine agency</i> CA <i>Carrier</i> CU <i>Customs</i> SH <i>Shipper</i> TO <i>Terminal operator</i>	C an..3
X		1131	Code list identification code	C an..17
X		3055	Code list responsible agency code	C an..3
O		9302	Sealing party name <i>Sealing party name (free text)</i>	C an..35
O	4517		SEAL CONDITION CODE 1 <i>In right condition</i> 2 <i>Damaged</i>	C 1 an..3
X	C208		IDENTITY NUMBER RANGE	C 1
X		7402	Object identifier	M an..35
X		7402	Object identifier	C an..35



**Segment:** **FTX** Free Text  
**Position:** 0680  
**Group:** Segment Group 13 (Equipment Details) Mandatory  
**Level:** 2  
**Usage:** Conditional (Optional)  
**Max Use:** 9  
**Purpose:** A segment to specify processable supplementary information associated with the container, such as: - loading instructions (seagoing vessel) - special instructions (related to inland transport) - container order information (conditions to be checked) - remarks

**Comments:**

**Notes:** *Sample segment :*  
**FTX+AAA+++CHOCOLATES'**  
**FTX+OSI++040'**  
**FTX+ABS++SM1:ZZZ:SMD'**

**Data Element Summary**

	<u>Data Element</u>	<u>Component Element</u>	<u>Name</u>	<u>Attributes</u>
M	4451		<b>TEXT SUBJECT CODE QUALIFIER</b>	M 1 an..3
			AAA Goods description	
			AAI General information	
			ABS Additional conditions	
			ACF Additional attribute information	
			ADZ CSC (Container Safety Convention) plate information	
			DAR Damage remarks	
			INV Invoice instruction	
			LOI Loading instruction	
			OSI Other service information	
			SIN Special instructions	
X	4453		<b>FREE TEXT FUNCTION CODE</b>	C 1 an..3
D	C107		<b>TEXT REFERENCE</b>	C 1
M		4441	<b>Free text value code</b>	M an..17

**- REEFER SETTINGS (if e4451 = OSI):**

**CLS** Vents closed  
**QUA** Vents one quarter open  
**HLF** Vents half open  
**THR** Vents three quarters open  
**FLL** Vents fully open  
**025** Volume of air flow 25 cubic meters per hour  
 etc.



- **INDICATION OF CONSTRUCTION MATERIAL (if e4451 = ACF):**

*Construction material code as per ISO 9897*

- **INDICATION OF DAMAGE CONDITION (if e4451 = DAR):**

*Condition code (see JM4/ITIGG/120)*

- **CURRENT EQUIPMENT CONDITION (if e4451 = ABS):**

*Condition code (see JM4/ITIGG/120)*

*For non-running reefer (dry reefer), the correct mechanism as per JM4/272 is as follows :*

*e4451 = ABS  
C107.e4441 = 117 (no temperature setting required)  
C107.e1131 = ZZZ (mutually defined)  
C107.e3055 = 184 (ACOS)*

*Condition code (see JM4/ITIGG/120v1.7)*

*e4451 = ABS  
C107.e4441 = SM1 (Gross Mass Verification – SOLAS Method 1) Gross Mass Verification by weighing the packed container as per SOLAS Regulation 2 Chapter VI, paragraphs 4-6, method 1  
= SM2 (Gross Mass Verification – SOLAS Method 2) Gross Mass Verification by calculation of weight of goods transported, packing weight, lashing and securing material weight and container tare weight as per SOLAS Regulation 2, Chapter VI paragraphs 4-6, method 2  
C107.e1131 = ZZZ  
C107.e3055 = SMD (SMDG)*

- **INVOICE INSTRUCTION (if e4451 = INV):**

*Instruction code (see JM4/ITIGG/120)*

- **SPECIAL INSTRUCTION (if e4451 = SIN):**

*Instruction code (mutually agreed)*

<b>O</b>	<b>1131</b>	<b>Code list identification code</b>	<b>C</b>	<b>an..17</b>
		130		Special handling If e4451 = INV



		ZZZ	<i>Mutually defined</i> <i>If e4451 = ACF, DAR or ABS</i>		
O		3055	Code list responsible agency code	C	an..3
		5	<i>ISO (International Organization for Standardization)</i> <i>If e4451 = ACF</i>		
		184	<i>AU, ACOS (Australian Chamber of Shipping)</i> <i>If e4451 = DAR or ABS</i>		
		SMD	<i>SMDG (Shipplanning message design group)</i> <i>If e4451 = ABS (SOLAS)</i>		
D	C108		TEXT LITERAL <i>See Recommendation JM4/272. Only used if 4451 = AAI</i>	C	1
M		4440	Free text value	M	an..512
			- <i>CSC PROBLEMS (if e4451 = CSC) :</i>		
			<i>CSC re-inspection date (CCYYMM) or</i> <i>ACEP (if there is an acceptance sticker) or</i> <i>NDAT (in all other cases)</i>		
			- <i>LOADING INSTRUCTION (if e4451 = LOI):</i>		
			<i>Free text</i>		
			- <i>GENERAL INFORMATION (if e4451 = AAI):</i>		
			<i>Free text</i>		
			- <i>DESCRIPTION OF GOODS (if e4451 = AAA):</i>		
			<i>Free text</i>		
O		4440	Free text value	C	an..512
O		4440	Free text value	C	an..512
O		4440	Free text value	C	an..512
O		4440	Free text value	C	an..512
X	3453		LANGUAGE NAME CODE	C	1 an..3
X	4447		FREE TEXT FORMAT CODE	C	1 an..3



**Segment:** **DGS** Dangerous Goods  
**Position:** 0710 (Trigger Segment)  
**Group:** Segment Group 15 (Dangerous Goods) Conditional (Optional)  
**Level:** 2  
**Usage:** Mandatory  
**Max Use:** 1  
**Purpose:** A segment to specify dangerous goods.  
**Comments:**  
**Notes:** *Sample segment :*  
*DGS+IMD+3+2058+026:CEL++3-06'*

**Data Element Summary**

	<u>Data Element</u>	<u>Component Element</u>	<u>Name</u>	<u>Attributes</u>
R	8273		<b>DANGEROUS GOODS REGULATIONS CODE</b>	C 1 an..3
			<i>ADR European agreement on the international carriage of dangerous goods on road (ADR)</i>	
			<i>ANR ADNR, Autorisation de transport de matieres Dangereuses pour la Navigation sur le Rhin</i>	
			<i>CFR US, 49 Code of federal regulations</i>	
			<i>IMD IMO IMDG code</i>	
			<i>RID Railroad dangerous goods book (RID)</i>	
R	C205		<b>HAZARD CODE</b>	C 1
M		8351	<b>Hazard identification code</b>	M an..7
			<i>IMDG Class Number</i>	
			<i>IMDG Sub- class number</i>	
			<i>RID Class number</i>	
			<i>CFR49 Codes</i>	
O		8078	<b>Additional hazard classification identifier</b>	C an..7
			<i>IMDG Code page number (english version)</i>	
O		8092	<b>Hazard code version identifier</b>	C an..10
			<i>IMDG Code Version number</i>	
O	C234		<b>UNDG INFORMATION</b>	C 1
O		7124	<b>United Nations Dangerous Goods (UNDG) identifier</b>	C n4
			<i>UNDG Number</i>	
X		7088	<b>Dangerous goods flashpoint value</b>	C an..8
O	C223		<b>DANGEROUS GOODS SHIPMENT FLASHPOINT</b>	C 1
R		7106	<b>Shipment flashpoint value</b>	C n3
			<i>Flashpoint temperature</i>	
R		6411	<b>Measurement unit code</b>	C an..3
			<i>CEL Celsius</i>	
			<i>FAH Fahrenheit</i>	
O	8339		<b>PACKAGING DANGER LEVEL CODE</b>	C 1 an..3
			<i>1 Great danger</i>	





			<b>Packing Group I</b>		
		2	Medium danger		
			<b>Packing Group II</b>		
		3	Minor danger		
			<b>Packing Group III</b>		
O	8364		EMERGENCY PROCEDURE FOR SHIPS IDENTIFIER <i>EMS Number</i>	C	1 an..6
O	8410		HAZARD MEDICAL FIRST AID GUIDE IDENTIFIER <i>MFAG Number</i>	C	1 an..4
O	8126		TRANSPORT EMERGENCY CARD IDENTIFIER <i>TREM Card Number</i>	C	1 an..10
O	C235		HAZARD IDENTIFICATION PLACARD DETAILS	C	1
O		8158	Orange hazard placard upper part identifier <i>Hazard identification number, upper part</i>	C	an..4
O		8186	Orange hazard placard lower part identifier <i>Hazard identification number, lower part (substance identification number)</i>	C	an4
O	C236		DANGEROUS GOODS LABEL	C	1
R		8246	Dangerous goods marking identifier <i>Dangerous goods label marking 1</i>	C	an..4
O		8246	Dangerous goods marking identifier <i>Dangerous goods label marking 2</i>	C	an..4
O		8246	Dangerous goods marking identifier <i>Dangerous goods label marking 3</i>	C	an..4
X	8255		PACKING INSTRUCTION TYPE CODE	C	1 an..3
X	8325		HAZARDOUS MEANS OF TRANSPORT CATEGORY CODE	C	1 an..3
X	8211		HAZARDOUS CARGO TRANSPORT AUTHORISATION CODE	C	1 an..3



**Segment:** **FTX** Free Text  
**Position:** 0720  
**Group:** Segment Group 15 (Dangerous Goods) Conditional (Optional)  
**Level:** 3  
**Usage:** Conditional (Optional)  
**Max Use:** 9  
**Purpose:** A segment to specify supplementary details regarding the dangerous goods such as the technical name of the dangerous goods etc.

**Comments:**

**Notes:** *Sample segment :*  
*FTX+AAC++PP'*  
*FTX+AAD+++BUTYL ACRYLATES, STABILIZED'*

**Data Element Summary**

	Data Element	Component Element	Name	Attributes
M	4451		TEXT SUBJECT CODE QUALIFIER	M 1 an..3
			AAC Dangerous goods additional information	
			AAD Dangerous goods, technical name	
X	4453		FREE TEXT FUNCTION CODE	C 1 an..3
O	C107		TEXT REFERENCE	C 1
M		4441	Free text value code	M an..17
			<i>MARPOL details or indication of transport of dangerous goods in limited quantities (if 4451 = AAC).</i>	
			P Marine Pollutant	
			PP Severe Marine Pollutant	
			TLQ Transport of dangerous goods in limited quantities	
X		1131	Code list identification code	C an..17
X		3055	Code list responsible agency code	C an..3
O	C108		TEXT LITERAL	C 1
M		4440	Free text value	M an..512
			<i>Dangerous Goods technical name (if 4451 = AAD)</i>	
			<i>Exterior Placard Label (if 4451 = AAC)</i>	
O		4440	Free text value	C an..512
O		4440	Free text value	C an..512
O		4440	Free text value	C an..512
O		4440	Free text value	C an..512
X	3453		LANGUAGE NAME CODE	C 1 an..3
X	4447		FREE TEXT FORMAT CODE	C 1 an..3



**Segment:** **CTA** Contact Information  
**Position:** 0750 (Trigger Segment)  
**Group:** Segment Group 16 (Contact Information)      Conditional (Optional)  
**Level:** 3  
**Usage:** Mandatory  
**Max Use:** 1  
**Purpose:** A segment to identify a person or department to be contacted regarding the dangerous goods.

**Comments:**

**Notes:** *Sample segment :*  
*CTA+HE+:CHEMTREC'*

**Data Element Summary**

	<u>Data Element</u>	<u>Component Element</u>	<u>Name</u>	<u>Attributes</u>
R	3139		<b>CONTACT FUNCTION CODE</b> <i>HE                      Emergency dangerous goods contact</i>	C    1    an..3
R	C056		<b>DEPARTMENT OR EMPLOYEE DETAILS</b>	C    1
X		3413	<i>Department or employee name code</i>	C            an..17
R		3412	<b>Department or employee name</b> <i>Contact name</i>	C            an..35



**Segment:** **COM** Communication Contact  
**Position:** 0760  
**Group:** Segment Group 16 (Contact Information) Conditional (Optional)  
**Level:** 4  
**Usage:** Conditional (Optional)  
**Max Use:** 9  
**Purpose:** A segment to specify communication details of the contact specified in the CTA segment.  
**Comments:**  
**Notes:** *Sample segment :*  
*COM+1800873138:TE'*

#### Data Element Summary

	<u>Data Element</u>	<u>Component Element</u>	<u>Name</u>	<u>Attributes</u>
M	C076		COMMUNICATION CONTACT	M 3
M		3148	Communication address identifier <i>Contact number</i>	M an..512
M		3155	Communication address code qualifier <i>EM Electronic mail</i> <i>FX Telefax</i> <i>TE Telephone</i> <i>TL Telex</i> <i>XF X.400 address</i>	M an..3



**Segment:** **EQA** Attached Equipment  
**Position:** 0790  
**Group:** Segment Group 13 (Equipment Details) Mandatory  
**Level:** 2  
**Usage:** Conditional (Optional)  
**Max Use:** 1  
**Purpose:** A segment to identify related container and means of transport details (rail), such as: - rail car (to relate to the 'rail-car'-qualified EQD-group)  
**Comments:**  
**Notes:** *Sample segment :  
 EQA+RG+ PONG328765'*

**Data Element Summary**

	<u>Data Element</u>	<u>Component Element</u>	<u>Name</u>	<u>Attributes</u>
M	8053		<b>EQUIPMENT TYPE CODE QUALIFIER</b>	M 1 an..3
			AB Chain	
			AD Temperature recorder	
			BL Blocks	
			BR Barge	
			CH Chassis	
			CN Container	
			FSU Forked support	
			LAR Lashing rope	
			RG Reefer generator	
			<b>Clip-on</b>	
			RR Rail car	
			STR Strap	
			TE Trailer	
			TP Tarpaulin	
O	C237		<b>EQUIPMENT IDENTIFICATION</b>	C 1
R		8260	<b>Equipment identifier Equipment number</b>	C an..17
X		1131	Code list identification code	C an..17
X		3055	Code list responsible agency code	C an..3
X		3207	Country name code	C an..3



**Segment:** **HAN** Handling Instructions  
**Position:** 0810  
**Group:** Segment Group 13 (Equipment Details) Mandatory  
**Level:** 2  
**Usage:** Conditional (Optional)  
**Max Use:** 9  
**Purpose:** A segment to specify handling instructions related to the container equipment.

**Comments:**

**Notes:** *Sample segment :*  
*HAN+RFR:130:184'*  
*HAN+SMA:130:SMD'*

**Data Element Summary**

	<u>Data Element</u>	<u>Component Element</u>	<u>Name</u>	<u>Attributes</u>
R	C524		HANDLING INSTRUCTIONS	C 1
O		4079	Handling instruction description code <i>Code as per JM4/ITIGG/120v1.7</i>	C an..3
O		1131	Code list identification code <i>130 Special handling</i>	C an..17
O		3055	Code list responsible agency code <i>184 AU, ACOS (Australian Chamber of Shipping)</i> <i>SMD SMDG (Shipplaning message design group)</i>	C an..3
O		4078	Handling instruction description <i>Handling instruction (free text)</i>	C an..70
X	C218		HAZARDOUS MATERIAL	C 1
X		7419	Hazardous material category name code	C an..4
X		1131	Code list identification code	C an..17
X		3055	Code list responsible agency code	C an..3
X		7418	Hazardous material category name	C an..35



**Segment:** **TDT** Details of Transport  
**Position:** 0860 (Trigger Segment)  
**Group:** Segment Group 18 (Details of Transport)      Conditional (Optional)  
**Level:** 2  
**Usage:** Mandatory  
**Max Use:** 1  
**Purpose:** A segment to specify pre- or on-carriage transport details, such as: \* pre- or on-carriage transport \* second pre- or on-carriage transport

**Comments:**

**Notes:** *Sample segment :*  
*TDT+1++9+10+:::CSX'*

**Data Element Summary**

	<u>Data Element</u>	<u>Component Element</u>	<u>Name</u>	<u>Attributes</u>
M	8051		<b>TRANSPORT STAGE CODE QUALIFIER</b>	M 1 an..3
			1 <i>Inland transport</i>	
			10 <i>Pre-carriage transport</i>	
			30 <i>On-carriage transport</i>	
O	8028		<b>MEANS OF TRANSPORT JOURNEY IDENTIFIER</b>	C 1 an..17
			<i>Carrier's voyage number</i>	
R	C220		<b>MODE OF TRANSPORT</b>	C 1
R		8067	<b>Transport mode name code</b>	C an..3
			1 <i>Maritime Transport</i>	
			2 <i>Rail</i>	
			3 <i>Road</i>	
			4 <i>Air</i>	
			8 <i>Inland Water</i>	
			9 <i>Mode unknown</i>	
X		8066	<b>Transport mode name</b>	C an..17
O	C228		<b>TRANSPORT MEANS</b>	C 1
O		8179	<b>Transport means description code</b>	C an..8
			<i>Means of transport code (UN/ECE recommendation 28)</i>	
O		8178	<b>Transport means description</b>	C an..17
			<i>Type of means of transport (free text)</i>	
O	C040		<b>CARRIER</b>	C 1
O		3127	<b>Carrier identifier</b>	C an..17
			<i>Carrier code</i>	
O		1131	<b>Code list identification code</b>	C an..17
			172 <i>Carriers</i>	
O		3055	<b>Code list responsible agency code</b>	C an..3
			20 <i>BIC (Bureau International des Containeurs)</i>	
			87 <i>Assigned by carrier</i>	
			166 <i>US, National Motor Freight Classification</i>	



			Association		
		184	AU, ACOS (Australian Chamber of Shipping)		
		SMD	SMDG Shippanning Message Development Group)		
			<b>Temporary code</b>		
		ZZZ	Mutually defined		
O		3128	Carrier name	C	an..35
			<b>Carrier name (free text)</b>		
X	8101		TRANSIT DIRECTION INDICATOR CODE	C	1 an..3
X	C401		EXCESS TRANSPORTATION INFORMATION	C	1
X		8457	Excess transportation reason code	M	an..3
X		8459	Excess transportation responsibility code	M	an..3
X		7130	Customer shipment authorisation identifier	C	an..17
O	C222		<b>TRANSPORT IDENTIFICATION</b>	C	1
O		8213	Transport means identification name identifier	C	an..9
			<b>Call Sign ( if 8067 = 1 and C222/1131 = 103)</b>		
			<b>Lloyds Number (if 8067 = 1 and C222/1131 = 146)</b>		
			<b>Train ID/Number (if 8067 = 2)</b>		
			<b>Truck ID/Number (if 8067 = 3)</b>		
			<b>Air Service ID (if 8067 = 4)</b>		
			<b>Barge ID/Number (if 8067 = 8)</b>		
O		1131	Code list identification code	C	an..17
		103	Call sign directory		
		146	Means of transport identification		
O		3055	Code list responsible agency code	C	an..3
		11	Lloyd's register of shipping		
		ZZZ	Mutually defined		
O		8212	Transport means identification name	C	an..35
			<b>Name of Means of Transport (free text)</b>		
O		8453	Transport means nationality code	C	an..3
			<b>Flag of Means of Transport (ISO Country Code)</b>		
X	8281		TRANSPORT MEANS OWNERSHIP INDICATOR CODE	C	1 an..3





**Segment:** **DTM** Date/Time/Period  
**Position:** 0870  
**Group:** Segment Group 18 (Details of Transport) Conditional (Optional)  
**Level:** 3  
**Usage:** Conditional (Optional)  
**Max Use:** 9  
**Purpose:** A segment to specify a date and time related to the pre- or on-carriage transport such as arrival or departure date and time.

**Comments:**

**Notes:** *Sample segment :*  
*DTM+132:200212270600:203'*

**Data Element Summary**

	<u>Data Element</u>	<u>Component Element</u>	<u>Name</u>	<u>Attributes</u>
M	C507		DATE/TIME/PERIOD	M 1
M		2005	Date or time or period function code qualifier	M an..3
			132 <i>Arrival date/time, estimated</i>	
			133 <i>Departure date/time, estimated</i>	
			178 <i>Arrival date/time, actual</i>	
			186 <i>Departure date/time, actual</i>	
R		2380	Date or time or period value	C an..35
			<i>Arrival/departure date/time</i>	
R		2379	Date or time or period format code	C an..3
			203 <i>CCYYMMDDHHMM</i>	



**Segment:** **LOC** Place/Location Identification  
**Position:** 0890 (Trigger Segment)  
**Group:** Segment Group 19 (Place/Location Identification) Conditional (Required)  
**Level:** 3  
**Usage:** Mandatory  
**Max Use:** 1  
**Purpose:** A segment to specify ports/locations associated with the pre- or on-carriage transport, such as: - place of departure - place of arrival

**Comments:**

**Notes:** *Sample segment :*  
*LOC+88+AUMEL:139:6'*

**Data Element Summary**

	<u>Data Element</u>	<u>Component Element</u>	<u>Name</u>	<u>Attributes</u>
M	3227		<b>LOCATION FUNCTION CODE QUALIFIER</b>	M 1 an..3
			7 <i>Place of delivery</i>	
			8 <i>Place of destination</i>	
			9 <i>Place/port of loading</i>	
			11 <i>Place/port of discharge</i>	
			13 <i>Place of transshipment</i>	
			88 <i>Place of receipt</i>	
			170 <i>Final port of discharge</i>	
			171 <i>Place of destination for pre-stacking prior to stowage</i>	
			175 <i>Activity location</i>	
R	C517		<b>LOCATION IDENTIFICATION</b>	C 1
O		3225	Location name code	C an..25
			<b>UNLOCODE</b>	
O		1131	Code list identification code	C an..17
			139 <i>Port</i>	
O		3055	Code list responsible agency code	C an..3
			6 <i>UN/ECE (United Nations - Economic Commission for Europe)</i>	
O		3224	Location name	C an..256
			<i>Place/location name (free text)</i>	
O	C519		<b>RELATED LOCATION ONE IDENTIFICATION</b>	C 1
O		3223	First related location name code	C an..25
			<i>1st related location code</i>	
O		1131	Code list identification code	C an..17
			72 <i>Container terminal</i>	
			261 <i>Consignee's premises</i>	
			262 <i>Consignor's premises</i>	
			263 <i>Packing and/or unpacking facility</i>	



		264	Storage facility		
		265	Repair facility		
		266	Marine berth		
		267	Marine wharf		
		268	Gate		
		269	Warehouse		
O		<b>3055</b>	<b>Code list responsible agency code</b>	<b>C</b>	<b>an..3</b>
		9	EAN (International Article Numbering association)		
		184	AU, ACOS (Australian Chamber of Shipping)		
		SMD	SMDG (Shipplanning Message Design Group)		
			<b>Temporary code</b>		
		ZZZ	Mutually defined		
O		<b>3222</b>	<b>First related location name</b>	<b>C</b>	<b>an..70</b>
			<i>1st related location name (free text)</i>		
O	C553		<b>RELATED LOCATION TWO IDENTIFICATION</b>	<b>C</b>	<b>1</b>
O		<b>3233</b>	<b>Second related location name code</b>	<b>C</b>	<b>an..25</b>
			<i>2nd related location code</i>		
O		<b>1131</b>	<b>Code list identification code</b>	<b>C</b>	<b>an..17</b>
		5	Facility identification		
		72	Container terminal		
		261	Consignee's premises		
		262	Consignor's premises		
		263	Packing and/or unpacking facility		
		264	Storage facility		
		265	Repair facility		
		266	Marine berth		
		267	Marine wharf		
		268	Gate		
		269	Warehouse		
O		<b>3055</b>	<b>Code list responsible agency code</b>	<b>C</b>	<b>an..3</b>
		9	EAN (International Article Numbering association)		
		184	AU, ACOS (Australian Chamber of Shipping)		
		SMD	SMDG (Shipplanning Message Development Group)		
			<b>Temporary code</b>		
		ZZZ	Mutually defined		
O		<b>3232</b>	<b>Second related location name</b>	<b>C</b>	<b>an..70</b>
			<i>2nd related location name (free text)</i>		
X	5479		<b>RELATION CODE</b>	<b>C</b>	<b>1 an..3</b>



**Segment:** **NAD** Name and Address  
**Position:** 0920 (Trigger Segment)  
**Group:** Segment Group 20 (Name and Address) Conditional (Optional)  
**Level:** 2  
**Usage:** Mandatory  
**Max Use:** 1  
**Purpose:** A segment to specify a related address or party, such as: - charges payer - country/place of container stuffing - place of collection - final place of positioning - message to - next destination - release to party - carrier agent (sea) - return address  
**Comments:**  
**Notes:** *Sample segment :*  
*NAD+CF+PON:172:20'*  
*NAD+AM+++JOHN DILINGER'*

**Data Element Summary**

	<u>Data Element</u>	<u>Component Element</u>	<u>Name</u>	<u>Attributes</u>
M	3035		<b>PARTY FUNCTION CODE QUALIFIER</b>	M 1 an..3
			CA	Carrier
			CB	Customs broker
			<b>CF</b>	<b>Container operator/lessee</b>
			CG	Carrier's agent
			CN	Consignee
			CZ	Consignor
			EQ	Empty container responsible party
			FP	Freight/charges payer
			GA	Road carrier
			GT	Rail carrier
			HR	Shipping line service
			IO	Insurance company
			JB	Goods collection party
			JC	Party at final place of positioning
			MF	Manufacturer of goods
			OG	Owner or lessor's surveyor
			OH	Lessee's surveyor
			ST	Ship to
			AM	Authorized official – (VGM EDI signature) <b>Name in capitals of Authorized person signing for verified gross mass (weight) = EDI signature</b>
			SPC	SOLAS packed container VGM responsible party <b>- Code as available from version D.15B: Party responsible for declaration of a packed container's verified gross mass (weight) according</b>



to SOLAS Chapter VI, Regulation 2, paragraphs 4-6

O	C082	PARTY IDENTIFICATION DETAILS	C	1
M	3039	Party identifier <i>Company Code</i>	M	an..35
O	1131	Code list identification code 160 Party identification 172 Carriers	C	an..17
O	3055	Code list responsible agency code 7 CEFIC (Conseil Europeen des Federations de l'Industrie Chimique) 9 EAN (International Article Numbering association) 10 ODETTE 16 US, D&B (Dun & Bradstreet Corporation) 20 BIC (Bureau International des Containeurs) 87 Assigned by carrier 163 US, FMC (Federal Maritime Commission) 166 US, National Motor Freight Classification Association 184 AU, ACOS (Australian Chamber of Shipping) SMDG (Shipplanning Message Development Group) <i>Temporary code</i>	C	an..3
O	C058	NAME AND ADDRESS <i>The use of C058 is allowed to accommodate specific local requirements that exist in several ports. The use of C058 however is in general not recommended - whenever possible it is suggested to use C082 instead.</i>	C	1
M	3124	Name and address description	M	an..35
O	3124	Name and address description	C	an..35
O	3124	Name and address description	C	an..35
O	3124	Name and address description	C	an..35
O	3124	Name and address description	C	an..35
O	C080	PARTY NAME	C	1
O	3036	Party name 1. Name in capitals of the person authorized to sign the shipping document declaring a verified gross mass (weight) (In case of qualifier 'AM') = EDI signature 2. Company name of SOLAS verified gross mass responsible party (in case of qualifier 'SPC') (optional occurrence 2) = Company of person signing for Verified Gross Mass	M	an..35
X	3036	Party name	C	an..35
X	3036	Party name	C	an..35
X	3036	Party name	C	an..35
X	3036	Party name	C	an..35



X		3045	Party name format code	C	an..3
O	C059		STREET	C	1
O		3042	Street and number or post office box identifier	M	an..35
X		3042	Street and number or post office box identifier	C	an..35
X		3042	Street and number or post office box identifier	C	an..35
X		3042	Street and number or post office box identifier	C	an..35
O	3164		CITY NAME	C	1 an..35
			<i>Verified Gross Mass (weight) obtained location</i>		
O	C819		COUNTRY SUB-ENTITY DETAILS	C	1
O		3229	Country sub-entity name code	C	an..9
O		1131	Code list identification code	C	an..17
O		3055	Code list responsible agency code	C	an..3
O		3228	Country sub-entity name	C	an..35
O	3251		POSTAL IDENTIFICATION CODE	C	1 an..17
O	3207		COUNTRY NAME CODE	C	1 an..3
			<i>Verified Gross Mass (weight) obtained country</i>		



**Segment:** **CNT** Control Total  
**Position:** 0970  
**Group:**  
**Level:** 0  
**Usage:** Conditional (Required)  
**Max Use:** 1  
**Purpose:** A segment to specify the number of containers in the message, explicitly given by the sender.

**Comments:**

**Notes:** *Sample segment :*  
*CNT+1:1'*  
*CNT+16:25'*

**Data Element Summary**

	<u>Data Element</u>	<u>Component Element</u>	<u>Name</u>	<u>Attributes</u>
M	C270		CONTROL	M 1
M		6069	Control total type code qualifier	M an..3
			1 <i>Algebraic total of the quantity values in line items in a message</i>	
			16 <i>Total number of equipment</i>	
M		6066	Control total value	M n..18
			<i>Dummy value of 1 (if e6069 = 1)</i>	
			<i>Number of EQD segments in the message (if e6069 = 16)</i>	
X		6411	Measurement unit code	C an..3



**Segment:** **UNT** Message Trailer

**Position:** 0980

**Group:**

**Level:** 0

**Usage:** Mandatory

**Max Use:** 1

**Purpose:** A service segment ending a message, giving the total number of segments in the message (including the UNH & UNT) and the control reference number of the message.

**Comments:**

**Notes:** *Sample segment :*  
*UNT+28+00000000006944'*

#### Data Element Summary

	<u>Data Element</u>	<u>Component Element</u>	<u>Name</u>	<u>Attributes</u>
M	0074		NUMBER OF SEGMENTS IN A MESSAGE <i>Total number of segments in the message</i>	M 1 n..6
M	0062		MESSAGE REFERENCE NUMBER <i>Message reference identical to e0062 in UNH segment</i>	M 1 an..14





## 8. SAMPLE MESSAGE

### 8.1 Unverified announced booking weight

UNH+0000000006944+COPARN:D:00B:UN:SMDG21'  
BGM+126+800255846+9+AB'  
DTM+137:200211211523:203'  
RFF+ATX:800255846'  
DTM+36:200211301200:203'  
TDT+20+048R+1+++MSC:172:20+++7104673:146:11:MSC CLAUDIA:PA'  
RFF+VM:3EQZ6'  
RFF+VON+048'  
LOC+9+AUMEL:139:6:MELBOURNE+CONWS:72:SMD:P&O PORTS'  
DTM+132:200212290600:203'  
NAD+MS+PON:172:20'  
CTA+IC+:STAN MATTHEWS'  
COM+0198562395:TE'  
EQD+CN++4532:102:5+2+2+5'  
RFF+SQ:1'  
EQN+1'  
TMD+3++1'  
LOC+11+ZACPT:139:6'  
LOC+8+ZAJNB:139:6'  
MEA+AAE+AET+KGM:10474'  
TMP+2+011:CEL'  
FTX+AAA+++CHOCOLATES'  
TDT+1++3'  
DTM+132:200212270600:203'  
LOC+165+AUMEL:139:6'  
CNT+16:1'  
UNT+27+0000000006944'

Gross weight



## 8.2 Verified Gross Mass available before Gate IN

UNH+0000000006944+COPARN:D:00B:UN:SMDG21'  
BGM+126+800255846+9+AB'  
DTM+137:200211211523:203'  
RFF+ATX:800255846'  
DTM+36:200211301200:203'  
TDT+20+048R+1+++MSC:172:20+++7104673:146:11:MSC CLAUDIA:PA'  
RFF+VM:3EQZ6'  
RFF+VON+048'  
LOC+9+AUMEL:139:6:MELBOURNE+CONWS:72:SMD:P&O PORTS'  
DTM+132:200212290600:203'  
NAD+MS+PON:172:20'  
CTA+IC+:STAN MATTHEWS'  
COM+0198562395:TE'  
EQD+CN++4532:102:5+2+2+5'  
RFF+SQ:1'  
EQN+1'  
TMD+3++1'  
DTM+798:200211211700:203' Weighing for verification date/time  
LOC+11+ZACPT:139:6'  
LOC+8+ZAJNB:139:6'  
MEA+AAE+VGM+KGM:10474' Verified gross mass (weight)  
TMP+2+011:CEL'  
FTX+AAA+++CHOCOLATES'  
FTX+ABS++SM1:ZZZ:SMD' SOLAS verification method used  
TDT+1++9+10'  
DTM+132:200212270600:203'  
LOC+165+AUMEL:139:6'  
NAD+AM+++JOHN DILLINGER' EDI signature  
CNT+16:1'  
UNT+30+0000000006944'



### 8.3 Instruction to weigh container for verification after Gate IN

This instruction will not update a booking, but will request a container to be weighed according SOLAS method 1 for obtaining the Verified Gross Mass.

```
UNH+0000000006944+COPARN:D:00B:UN:SMDG21'  
BGM+127+800255846+9+AB'                               TE Special service instruction  
DTM+137:200211211523:203'  
RFF+ATX:800255846'  
DTM+36:200211301200:203'  
TDT+20+048R+1+++MSC:172:20+++7104673:146:11:MSC CLAUDIA:PA'  
RFF+VM:3EQZ6'  
RFF+VON+048'  
LOC+9+AUMEL:139:6:MELBOURNE+CONWS:72:SMD:P&O PORTS'  
DTM+132:200212290600:203'  
NAD+MS+PON:172:20'  
CTA+IC+:STAN MATTHEWS'  
COM+0198562395:TE'  
EQD+CN+PONU1234567+4532:102:5+2+2+5'  
RFF+SQ:1'  
EQN+1'  
TMD+3++1'  
LOC+11+ZACPT:139:6'  
LOC+8+ZAJNB:139:6'  
MEA+AAE+G+KGM:10000'                                   Gross weight  
TMP+2+011:CEL'  
FTX+AAA+++CHOCOLATES'  
HAN+SM1:ZZZ:SMD'                                       SOLAS verification method to be used  
CNT+16:1'  
UNT+25+0000000006944'
```