

SOLAS VGM

IFTMBF and IFTMIN Messages



Yoshi Kito

19th April 2016, Copenhagen

IFTMBF & IFTMIN messages

1. SMDG has not been developed and implemented IFTMBF & IFTMIN messages respectively.
2. The MIGs of IFTMBF & IFTMIN have been developed by various communities based on various UN/EDIFACT directories (e.g. D.95B, D.99B, D.00B and etc.). In conclusion, we have no global standardised MIGs of IFTMBF and IFTMIN like BAPLIE, COXXXX messages.
3. Robert and I have been participating in the e-meeting on the “SOLAS VGM” chaired by Jost/Michael.
4. One major shipping lines approached to me to collaborate to review & update the MIGs of IFTMBF & IFTMIN to be used **between a shipping lines and a shipper/their agents** (early July, 2015)
5. Through this major shipping line’s collaboration, we decided to get the following data from a shipper/their agents in addition to the existing data in IFTMBF and IFTMIN:
 - **"VGM weight"**
 - **"VGM weighing method (method 1 or method 2)"**
 - **"VGM maker (Weighing Party)"**

IFTMBF & IFTMIN messages



6. ITIGG is only responsible to develop and maintain the “General Recommendation” & “Freight Movement P&R” and not responsible to develop a specific MIG of the Freight Movement messages.
7. Furthermore ITIGG developed “IFCSUM (Multi-consignment) P&R” which help us to develop a guideline of IFTMBF/IFTMIN in order to add additional data by SOLAS VGM.
8. Try to apply the same methodology including code/qualifiers (including temporary codes) adopted in COXXXX, BAPLIE and VERMAS as possible.
9. Segments for mapping are shown on the next page.



Mapping the data into IFTMIN & IFTMBF based on D.99B

Additional data required by SOLAS VGM	Segment to be mapped in IFTMIN	Segment to be mapped in IFTMBF
Data related to VGM weight	Pos. 1690 MEA/ SG37 (EQD)	Pos. 1310 MEA/ SG32 (EQD)
Data related to VGM method	Pos. 1750 FTX/ SG37 (EQD)	Pos. 1350 FTX/ SG32 (EQD)
Data related to Weighing Party	Pos. 1860 NAD/ SG39 /SG37(EQD) Pos. 1890 CTA/ SG40 /SG39/SG37(EQD) Pos. 1900 COM/ SG40 /SG39/SG37(EQD)	Pos. 1380 NAD/ SG33 /SG32(EQD) Pos. 1410 CTA/ SG34 /SG33/SG32(EQD) Pos. 1420 COM/ SG34 /SG33/SG32(EQD)

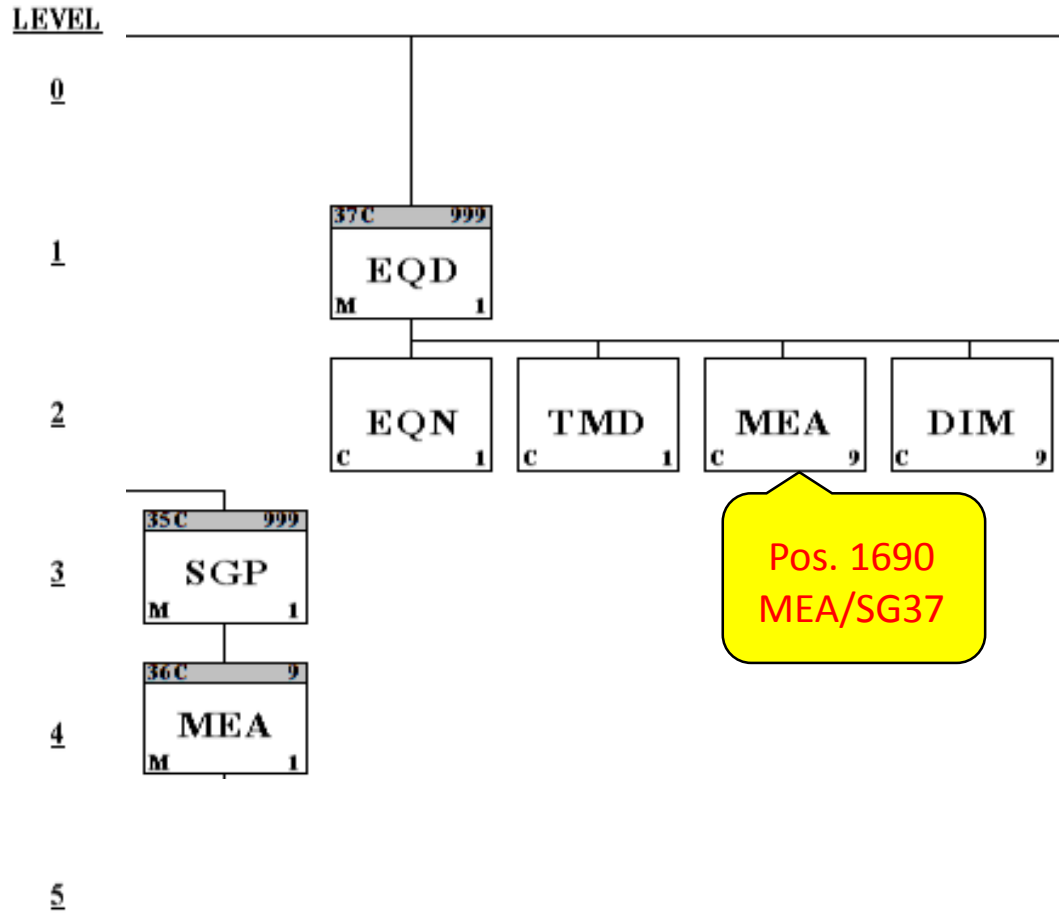
10. Next slides show the position in each message structure for your clear understanding. (D.99B)

Data related to "VGM weight"

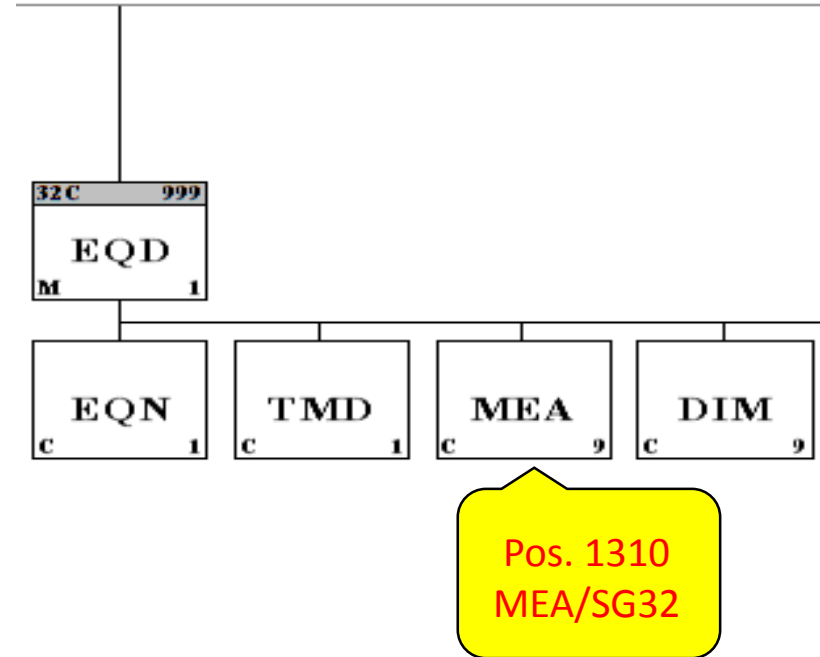


IFTMIN

IFTMBF



Pos. 1690
MEA/SG37



Pos. 1310
MEA/SG32



Data related to "VGM method"



IFTMIN

IFTMBF

Pos. 1750
FTX/SG37

Pos. 1350
FTX/SG32



Data related to "VGM maker (Weighing Party)"

LEVEL

0

IFTMIN

IFTMBF

1

Pos. 1860
NAD/SG39

Pos. 1380
NAD/SG33

2

Pos. 1890
CTA/SG40

Pos. 1410
CTA/SG34

3

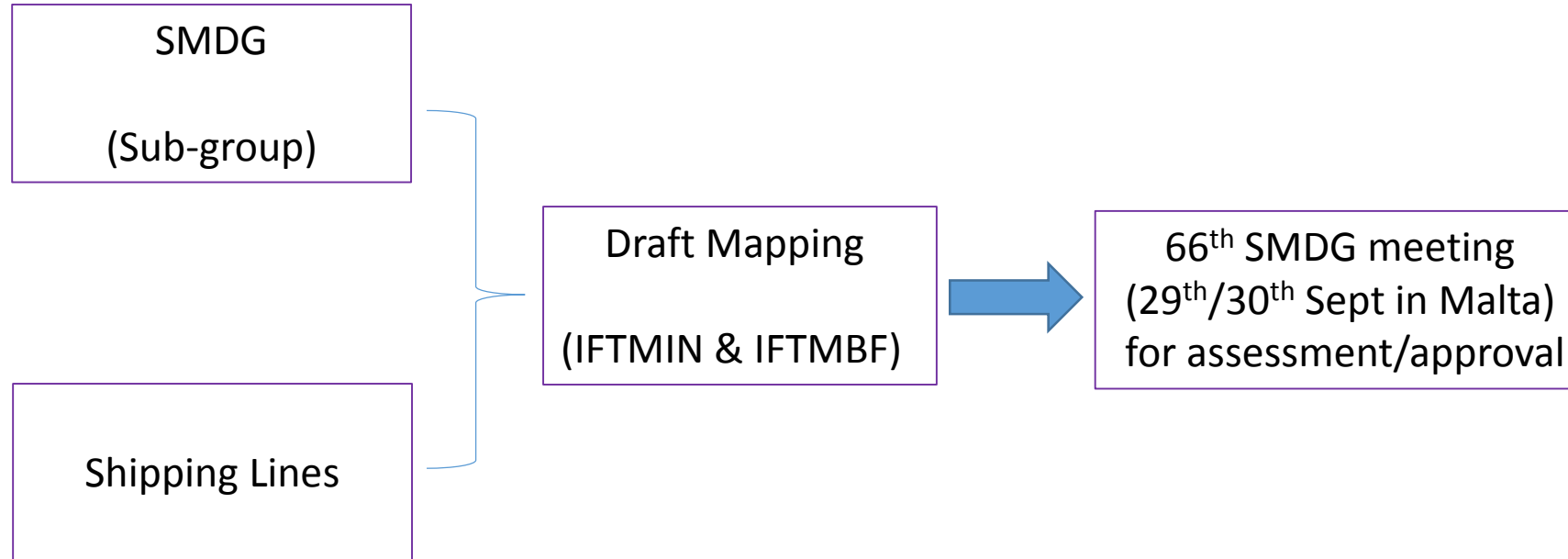
4

5

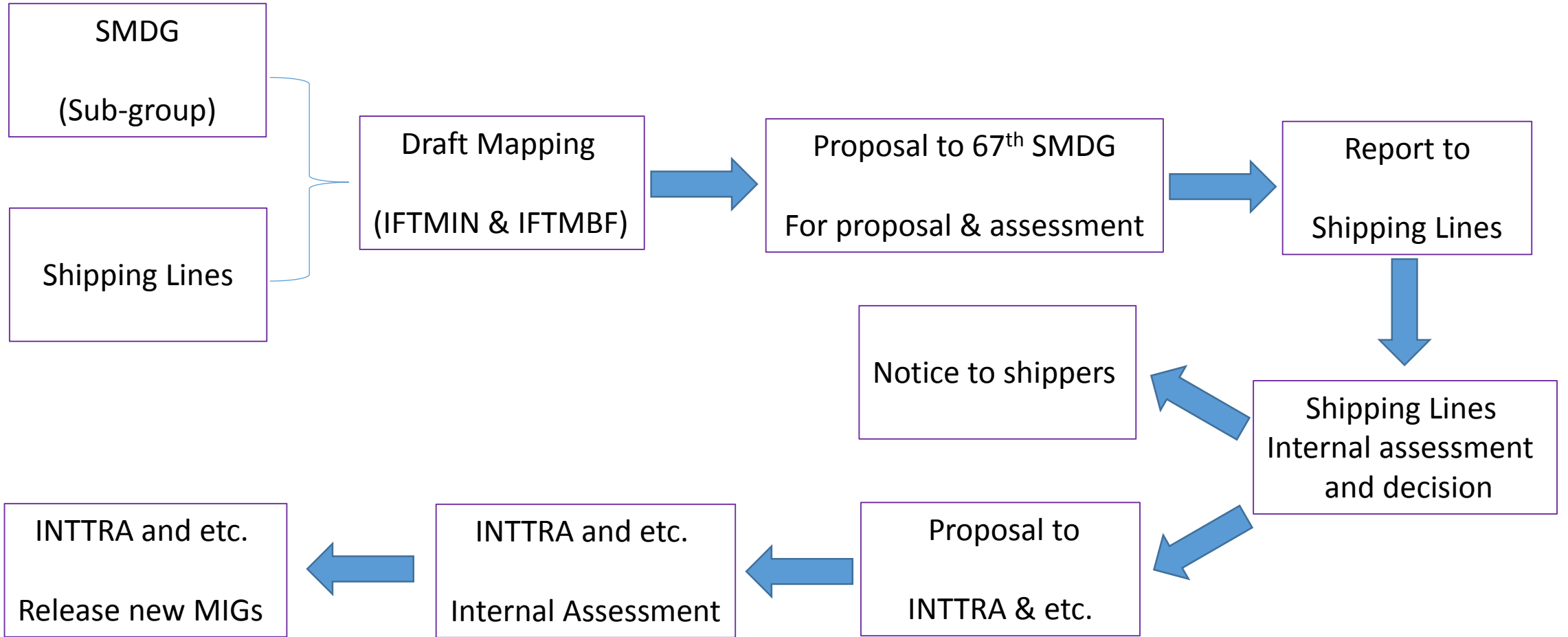
Pos. 1900
COM/SG40

Pos. 1420
COM/SG34

Work flow up to now and future - SMDG



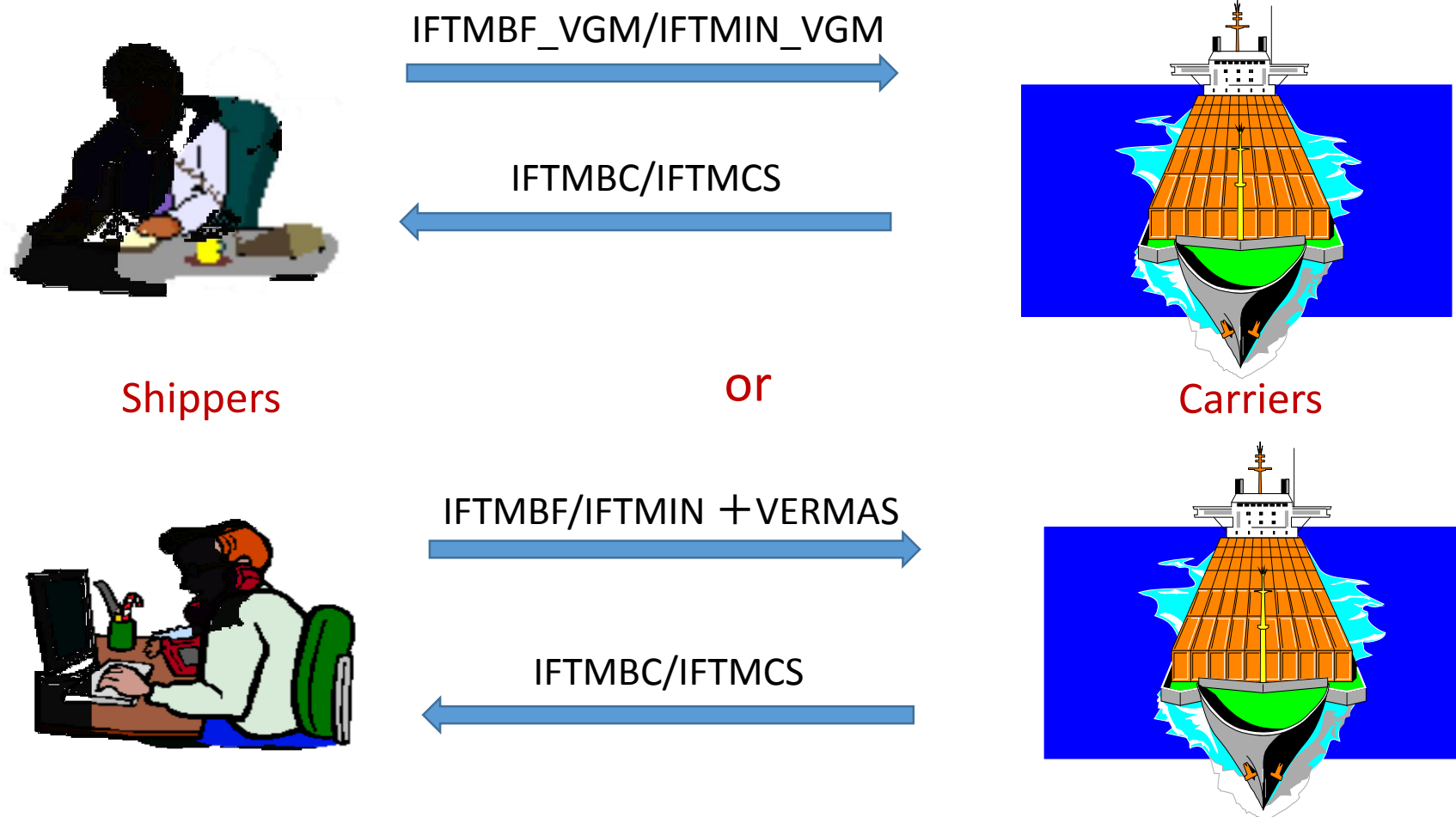
Work flow up to now and future - Shipping Lines



Additional data required by VERMAS in addition to the existing data by IFTMIN from a shipper/their agents

1. Container number
2. VGM weight
3. Responsible party
4. Method (optional)
5. Booking number

Two options for Shipping Instruction from shippers to carriers



Thank you for your attention.

Q & A