



**User Manual**  
(Implementation Guide)

**UN/EDIFACT MESSAGE**

**IFTMBC**  
(Booking between Partner Lines)

**Version 6.4**

**D.00B**

---

---

Version : 6.4  
Date : April 2024  
Source : SMDG User Group for Shipping Lines and Container Terminals

---

---

## Contents

1. Introduction	3
2. General	4
3. Versions	5
4. Special Topics	6
5. Implementation Guide	8
6. Example Message	22

# **IFTMBC DG Boking between Partner Lines – D00B Version 6.4**

## **1. INTRODUCTION**

These instructions are valid for the "UN/EDIFACT UNITED NATIONS STANDARD MESSAGE (UNSM) FIRM BOOKING CONFIRMATION" (IFTMBC), version 6.4, date April 2024 as designed by the SMDG (User Group for Shipping Lines and Container Terminals).

The instructions in this manual are valid for fully cellular container ships.

This manual is intended for use by vessel operators and container operators.

This "User Manual" (or "Implementation Guide") Version 6.4 was developed by the **SMDG User Group for Shipping Lines and Container Terminals**

The **SMDG** is a "Worldwide User Group" under the auspices of the **UN/CEFACT**.

The SMDG claims full copyright to this manual and its contents, however, the manual may be copied and used by anyone, without the consent of the SMDG.

This manual is published by the SMDG on [www.smdg.org](http://www.smdg.org)

Any remarks, comments or questions can be addressed to [Secretariat@smdg.org](mailto:Secretariat@smdg.org)

**It is not permitted to change the contents of this manual!**

## 2. GENERAL

### a. IFTMBC Message

This version of IFTMBC instructions is specifically designed for the transmission of a Booking Confirmation for Dangerous or Critical Cargo from a Vessel Operator to a Container Operator.

This document describes the modalities for exchanging booking request acceptations/rejections between carriers.

Some carriers will always handle acceptations/rejections on container level, not on cargo level.

- Accept/Reject is done on container level
- If a cargo item inside a container is rejected, the full container is rejected
- If multiple cargo items cannot go together in the same container, the full container will be rejected

While other carriers may handle acceptations/rejections on booking level, not on cargo level, nor container level.

- Accept/Reject is done on booking level, regardless of the number of the containers in the booking
- If a cargo item inside a container is rejected, the container is rejected
- And if one of the containers under the booking is rejected, the booking will be rejected

It will be up to the involved carriers to check and agree on the specific approach to be used with each other, either container basis or booking basis.

Processing on container level. IFTMBC will contain:

- BGM segment with same reference as BGM from IFTMBF
- RFF+BN segment containing the booking number
- RFF+AAQ segment containing the container reference (RFF+AAY from the IFTMBF)
- EQD+CN segment will contain the container number

Processing on booking level. IFTMBC will contain:

- BGM segment with same reference as BGM from IFTMBF
- RFF+BN segment containing the booking number

It is also possible to mix IFTMBF on booking level and IFTMBC on container level. For example:

1 IFTMBF file  
Booking A including 3 containers

3 IFTMBC files  
Container 1: approved  
Container 2: approved  
Container 3: rejected

This approach ensures that all containers within a booking are not rejected solely because one container is rejected. For instance, in Booking A, Partner can still ship Container 1 and Container 2, even if Container 3 is rejected. This prevents from losing the entire booking.

### Recommended rejection after DG closing

SMDG recommends rejecting all critical changes/replace messages to bookings after DG closing. Critical Change list is under discussion.

### Follow up on pending requests to avoid operational overhead:

All carriers agreed on the following statement:

- Every carrier has a responsibility to report pending requests
- Only list those request that are pending for more than 12 hours (to be agreed upon ?)
- Only the last request should be processed when several requests are pending.
- All carriers agreed to internally investigate the following:
- Only list those for which you have received an MDN

### b. EDIFACT Conventions

Immediately below the segment tags and data element identification the usage of same will be mentioned as follows:

#### Usage Indicators

Indicator		Explanation
<b>M</b> (Mandatory)	<b>always</b>	<b>M</b> (Mandatory - must always be used)
<b>C</b> (Conditional)	<b>either</b>	<b>R</b> (Required - must always be used)
	Or	<b>O</b> (optional - may be used by agreement if required)
	Or	<b>D</b> (dependent - must be used if certain conditions apply)
	Or	<b>X</b> (must not be used)

Next to the usage indicator the official format of the data element will be given, e.g. a4 or an..15. The description may further limit the format of the data element, for example a data element with a format an..17 may be limited to an12 by its description.

Data elements within the segments that are not mentioned here will not be used, resp. should not contain important information, since they will probably not be seen by the recipient, unless agreed otherwise.

SMDG recommends to use only data elements, qualifiers and codes described in this manual. If partners agree to use additional data elements, qualifiers and codes, not described in this manual, then specific and detailed agreement about those data elements, qualifiers and codes should be made.

Optional data elements may be omitted, unless specifically made compulsory by this manual (Indicator "R" = required), or unless agreed otherwise between partners.

In no case neither mandatory segments (according to IFTMBF) nor mandatory composites or data elements according to the relevant Segment Directory may be omitted.

### **3. VERSIONS**

The message structure, data elements, composites and segments of the **UN/EDIFACT directory D.00B** are used in this manual. These are unchanged in this version 7.0 compared to previous version 6.3.

Codes and qualifiers used, are according to **UN/EDIFACT Directory D.20B Code List**, respectively the latest version of the code list of the CLRA (Code List Responsible Agency) specified in data element 3055.

This version 6.4 is based upon the previous version 6.3 with improved representation of EDIFACT syntax rules. Also additional segments for Break Bulk were added to version 6.4. From version 6.4 on the MIG will be published on the SMDG website [www.smdg.org](http://www.smdg.org)

This MIG was originally developed for the exchange of DG bookings between partner lines. It has now been adopted by the SMDG for the exchange of DG, OOG and Critical Cargo booking information between slot-sharing shipping lines.

#### **4. Special Topics**

The following recommendation should be respected regarding data to be mapped

- For terminals the SMDG terminal codes should be used
- For ports the UN/Locodes codes should be used
- For container size type the ISO6346 codes should be used
- For packing (Outer) the codes from UN Recommendation 21 should be used

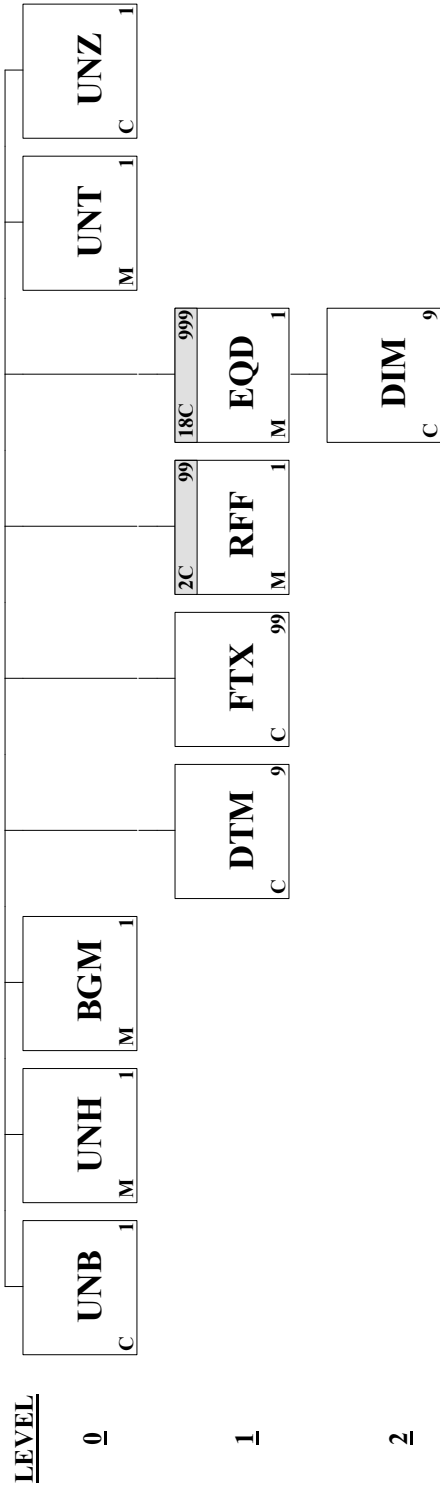
# IFTMBC Booking Confirmation Message

## Introduction:

This document describes the modalities for exchanging booking request acceptations/rejections between carriers.

<u>Page No.</u>	<u>Pos. No.</u>	<u>Seg. ID</u>	<u>Name</u>	<u>Req. Des.</u>	<u>Max.Use</u>	<u>Group Repeat</u>
3	0005	UNB	Interchange Header	C	1	
4	0010	UNH	Message Header	M	1	
5	0020	BGM	Beginning of Message	M	1	
6	0050	DTM	Date/Time/Period	C	9	
7	0070	FTX	Free Text	C	99	
	0130		Segment Group 2: RFF	C		99
9	0140	RFF	Reference	M	1	
	0730		Segment Group 18: EQD-DIM	C		999
11	0740	EQD	Equipment Details	M	1	
12	0780	DIM	Dimensions	C	9	
13	0930	UNT	Message Trailer	M	1	
14	0960	UNZ	Interchange Trailer	C	1	





**Segment:** **UNB** Interchange Header  
**Position:** 0005  
**Group:**  
**Level:** 0  
**Usage:** Conditional (Optional)  
**Max Use:** 1  
**Purpose:** To start, identify and specify an interchange  
**Notes:** *Sample segment:*  
***UNB+UNOB:1+MSC+HLC+120125:0945+38495'***

**Data Element Summary**

<u>User</u>	<u>Data</u>	<u>Component</u>	<u>Attributes</u>
<u>Attribute</u>	<u>Element</u>	<u>Element</u> <u>Name</u>	<u>Req/Repeat/R</u>
<u>epr</u>			
M	S001	SYNTAX IDENTIFIER	M 1
M		0001 Syntax identifier	M a4
M		0002 Syntax version number	M n1
M	S002	INTERCHANGE SENDER	M 1
M		0004 Sender identification	M an..35
O		0007 Partner identification code qualifier	C an..4
O		0008 Address for reverse routing	C an..14
M	S003	INTERCHANGE RECIPIENT	M 1
M		0010 Recipient identification	M an..35
O		0007 Partner identification code qualifier	C an..4
O		0014 Routing address	C an..14
M	S004	DATE AND TIME OF PREPARATION	M 1
M		0017 Date of preparation	M n6
M		0019 Time of preparation	M n4
M	0020	INTERCHANGE CONTROL REFERENCE	M 1 an..14

Segment: **UNH** Message Header  
 Position: 0010  
 Group:  
 Level: 0  
 Usage: Mandatory  
 Max Use: 1  
 Purpose: A service segment starting and uniquely identifying a message. The message type code for the Booking confirmation message is IFTMBC.  
 Note: Booking confirmation messages conforming to this document must contain the following data in segment UNH, composite S009:  
 Data element 0065 IFTMBC 0052 D 0054 00B  
 0051 UN

Notes: **Sample segment:**  
**UNH+ME000001+IFTMBC:D:00B:UN:EAN003'**

#### Data Element Summary

User	Data	Component	Attributes
<u>Attribute</u>	<u>Element</u>	<u>Element</u> <u>Name</u>	<u>Req/Repeat/R</u>
<u>epr</u>			
M	0062	MESSAGE REFERENCE NUMBER	M 1 an..14
M	S009	MESSAGE IDENTIFIER	M 1
M	0065	Message type identifier <i>IFTMBC Booking confirmation message</i>	M an..6
M	0052	Message type version number <i>D Draft version/UN/EDIFACT Directory</i>	M an..3
M	0054	Message type release number <i>00B Release 2000 - B</i>	M an..3
M	0051	Controlling agency <i>UN UN/CEFACT</i>	M an..2
O	0057	Association assigned code <i>EAN003</i>	C an..6

Segment: **BGM** Beginning of Message  
 Position: 0020  
 Group:  
 Level: 0  
 Usage: Mandatory  
 Max Use: 1  
 Purpose: A segment to indicate the beginning of a message and to transmit identifying number and type of the message.  
 Notes: **Sample segment:**  
**BGM+770+31041+9+AP'**

Data Element Summary

User	Data	Component	Attributes
<u>Attribute</u>	<u>Element</u>	<u>Element</u> <u>Name</u>	<u>Req/Repeat/R</u>
<u>epr</u>			
M	C002	DOCUMENT/MESSAGE NAME	M 1
O		1001 Document name code 770 Booking confirmation	C an..3
M	C106	DOCUMENT/MESSAGE IDENTIFICATION	M 1
O		1004 Document identifier	C an..70
<p><i>For inbound IFTMBC (received from other carriers), it is expected to receive the same document identifier of the corresponding IFTMBF send to VSA partner.            For outbound IFTMBC (sent to other carriers), also place the same document identifier of the corresponding inbound IFTMBF (received from other carriers).</i></p>			
M	1225	MESSAGE FUNCTION CODE 9 Original	M 1 an..3
M	4343	RESPONSE TYPE CODE	M 1 an..3
<p><i>All carriers agreed that finalized and accepted statuses should be used in a consequent way. The delta between both statuses can be different between carriers as we need to support company policies.</i></p> <p><i>For most carriers the delta is only the container number.            o This means that a request without emergency information will be rejected            o MSC will accept a request without emergency information (contact and phone) but will never finalize this request            o On the long term the delta between both should also be aligned</i></p>			
		AP Accepted	
		FI Finalized	
		RE Rejected	

**Segment:** **DTM** Date/Time/Period  
**Position:** 0050  
**Group:**  
**Level:** 1  
**Usage:** Conditional (Optional)  
**Max Use:** 9  
**Purpose:** A segment to indicate a date and time applying to the whole message, e.g., date and time of document issue.  
**Notes:** **Sample segment:**  
**DTM+137:201505040414:203'**

**Data Element Summary**

<u>User</u>	<u>Data</u>	<u>Component</u>	<u>Attributes</u>
<u>Attribute</u>	<u>Element</u>	<u>Element Name</u>	<u>Req/Repeat/R</u>
<u>epr</u>			
M	C507	DATE/TIME/PERIOD	M 1
M		2005 Date or time or period function code qualifier 137 Document/message date/time	M an..3
O		2380 Date or time or period value	C an..35
O		2379 Date or time or period format code 203 CCYYMMDDHHMM	C an..3

Segment: **FTX** Free Text

Position: 0070

Group:

Level: 1

Usage: Conditional (Optional)

Max Use: 99

**Purpose:** A segment to specify free form or processable supplementary information, such as status of transport, remarks to be printed on the transport documents (where required), consignment remarks, insurance instructions, etc., or any other additional information.

**Notes:** **Sample segment:**

**FTX+AAP+++Separated from hydrogen peroxides'**

**If the booking request is rejected, FTX+AAP for rejection reason must be provided.**

#### Data Element Summary

<u>User</u>	<u>Data</u>	<u>Component</u>	<u>Attributes</u>
<u>Attribute</u>	<u>Element</u>	<u>Element</u> <u>Name</u>	<u>Req/Repeat/R</u>
<u>epr</u>			
M	4451	TEXT SUBJECT CODE QUALIFIER AAP Response (free text)	M 1 an..3
O	C108	TEXT LITERAL	C 1
M		4440 Free text value	M an..512
O		4440 Free text value	C an..512
O		4440 Free text value	C an..512
O		4440 Free text value	C an..512
O		4440 Free text value	C an..512

**Group:** **RFF** Segment Group 2: Reference  
**Position:** 0130  
**Group:**  
**Level:** 1  
**Usage:** Conditional (Optional)  
**Max Use:** 99  
**Purpose:** A group of segments containing a reference and constants which apply to the entire message.

**Segment Summary**

<b>User</b>	<b>Pos.</b>	<b>Seg.</b>		<b>Req.</b>	<b>Max.</b>	<b>Group:</b>
<b><u>Attribute</u></b>	<b><u>No.</u></b>	<b><u>ID</u></b>	<b><u>Name</u></b>	<b><u>Des.</u></b>	<b><u>Use</u></b>	<b><u>Repeat</u></b>
M	0140	RFF	Reference	M	1	

**Segment:** **RFF** Reference  
**Position:** 0140 (Trigger Segment)  
**Group:** Segment Group 2 (Reference) Conditional (Optional)  
**Level:** 1  
**Usage:** Mandatory  
**Max Use:** 1  
**Purpose:** A segment to express a reference which applies to the entire message such as: the document/message number that is to be updated by this very message (according to data element 1225 Message function code in segment BGM), booking reference, order number, insurance contract, etc.

**Notes:** **Sample segments:**  
**RFF+BN:431-AA'**  
**RFF+AAQ:19815255'**

**Processing on container level:**  
**RFF+AAQ segment containing the container reference (RFF Group 32 C506.e1154 from the IFTMBF)**

#### Data Element Summary

User	Data	Component	Attributes	
<u>Attribute</u>	<u>Element</u>	<u>Element</u>	<u>Name</u>	<u>Req/Repeat/R</u>
<u>epr</u>				
M	C506		REFERENCE	M 1
M		1153	Reference code qualifier	M an..3
			AAQ <i>Unit load device (e.g. container) identification number</i>	
			BN <i>Booking reference number</i>	
O		1154	Reference identifier	C an..70
O		4000	Reference version identifier	C an..35



**Group:** **EQD** Segment Group 18: Equipment Details  
**Position:** 0730  
**Group:**  
**Level:** 1  
**Usage:** Conditional (Optional)  
**Max Use:** 999  
**Purpose:** A segment to specify number of pieces of equipment required.

**Segment Summary**

<u>User</u>	<u>Pos.</u>	<u>Seg.</u>	<u>Name</u>	<u>Req.</u>	<u>Max.</u>	<u>Group:</u>
<u>Attribute</u>	<u>No.</u>	<u>ID</u>		<u>Des.</u>	<u>Use</u>	<u>Repeat</u>
M	0740	EQD	Equipment Details	M	1	
O	0780	DIM	Dimensions	C	9	

**Segment:** **EQD** Equipment Details  
**Position:** 0740 (Trigger Segment)  
**Group:** Segment Group 18 (Equipment Details)      Conditional (Optional)  
**Level:** 1  
**Usage:** Mandatory  
**Max Use:** 1  
**Purpose:** A segment to specify transport movement details for the equipment.  
**Notes:** **Sample segment:**  
**EQD+CN+GATU1333509'**  
*Used for processing on container level.*

Data Element Summary				
User	Data	Component	Attributes	
<u>Attribute</u>	<u>Element</u>	<u>Element</u>	<u>Name</u>	<u>Req/Repeat/R</u>
<u>epr</u>				
M	8053		EQUIPMENT TYPE CODE QUALIFIER CN                      Container	M    1    an..3
O	C237		EQUIPMENT IDENTIFICATION	C    1
O		8260	Equipment identifier	C                      an..17

**Segment:** **DIM** Dimensions  
**Position:** 0780  
**Group:** Segment Group 18 (Equipment Details)      Conditional (Optional)  
**Level:** 2  
**Usage:** Conditional (Optional)  
**Max Use:** 9  
**Purpose:** A segment to specify a temperature setting for the equipment.  
**Notes:** **Sample segment:**  
**DIM+1+SLT:1'**  
**Lost Slots for OOG**

Data Element Summary				
User	Data	Component		Attributes
<u>Attribute</u>	<u>Element</u>	<u>Element</u>	<u>Name</u>	<u>Req/Repeat/R</u>
<u>epr</u>				
M	6145		DIMENSION TYPE CODE QUALIFIER 1 <i>Gross dimensions</i>	M    1    an..3
M	C211		DIMENSIONS	M    1
M		6411	Measurement unit code SLT <i>Lost Slots</i>	M      an..8
O		6168	value	C      n..15

Segment: **UNT** Message Trailer

Position: 0930

Group:

Level: 0

Usage: Mandatory

Max Use: 1

Purpose: A service segment ending a message, giving the total number of segments in the message (including the UNH & UNT) and the control reference number of the message.

Notes: **Sample segment:**  
**UNT+10+388400001'**

#### Data Element Summary

User	Data	Component	Attributes
<u>Attribute</u>	<u>Element</u>	<u>Element</u> <u>Name</u>	<u>Req/Repeat/R</u>
<u>epr</u>			
M	0074	NUMBER OF SEGMENTS IN A MESSAGE	M 1 n..6
M	0062	MESSAGE REFERENCE NUMBER	M 1 an..14

**Segment:** **UNZ** Interchange Trailer  
**Position:** 0960  
**Group:**  
**Level:** 0  
**Usage:** Conditional (Optional)  
**Max Use:** 1  
**Purpose:** To end and check the completeness of an interchange  
**Notes:** *Sample segment:*  
**UNZ+1+38495'**

**Data Element Summary**

<u>User</u>	<u>Data</u>	<u>Component</u>		<u>Attributes</u>
<u>Attribute</u>	<u>Element</u>	<u>Element</u>	<u>Name</u>	<u>Req/Repeat/R</u>
<u>epr</u>				
M	0036		INTERCHANGE CONTROL COUNT	M 1 n..6
M	0020		INTERCHANGE CONTROL REFERENCE	M 1 an..14

**IFTMBC Samples**

## 1. Accepted (on container level)

UNA:+.?  
UNB+UNOB:1+HLC+MSC+1205:0945+38495  
UNH+ME000001+IFTMBC:D:00B:UN:EAN003  
BGM+770+31041+9+AP  
DTM+137:201203081214:203  
RFF+BN:431-AA  
RFF+AAQ:19815255  
EQD+CN+GATU1333509  
UNT+13+ME000001

## 2. Accepted (on booking level)

UNA:+.?  
UNB+UNOB:1+HLC+MSC+120125:0945+38495  
UNH+ME000001+IFTMBC:D:00B:UN:EAN003  
BGM+770+31041+9+AP  
DTM+137:201203081214:203  
RFF+BN:431-AA  
UNT+13+ME000001

## 3. Rejected with reason (on container level)

UNA:+.?  
UNB+UNOB:1+HLC+MSC+120125:0945+38495  
UNH+ME000001+IFTMBC:D:00B:UN:EAN003  
BGM+770+31041+9+RE  
DTM+137:201203081214:203  
FTX+AAP+++Separated from hydrogen peroxides  
RFF+BN:431-AA  
RFF+AAQ:19815255  
EQD+CN+GATU1333509  
UNT+13+ME000001

## 4. Rejected with reason (on booking level)

UNA:+.?  
UNB+UNOB:1+HLC+MSC+120125:0945+38495  
UNH+ME000001+IFTMBC:D:00B:UN:EAN003  
BGM+770+31041+9+RE  
DTM+137:201203081214:203  
FTX+AAP+++Separated from hydrogen peroxides  
RFF+BN:431-AA  
UNT+13+ME000001

5. IFTMBC after cancellation of a booking

UNA:+.?  
UNB+UNOB:1+MSC+ONE+180719:1649+119'  
UNH+118+IFTMBC:D:00B:UN:EAN003  
BGM+770+[BOOKING\_REQUEST\_IDENTIFIER]+9  
DTM+137:201807191649:203  
FTX+AAP+++Booking has been cancelled  
RFF+BN:[BOOKING\_REFERENCE]  
UNT+15+118  
UNZ+1+119