



USER GROUP FOR SHIPPING LINES AND CONTAINER TERMINALS

IFTSAI (Transport Schedule)

DMR for two new segments

**SMDG Meeting in Hamburg
18th April 2012**

Michael Schröder
Hapag-Lloyd AG



Purpose of the IFTSAI

The IFTSAI is typically sent from a Vessel Operator to a Terminal or to another Vessel Operator or to a schedule portal.

It contains information on the schedule of the vessel.

Typical Information in the IFTSAI

Header Part

Vessel information

Vessel identifier, name, operator and voyage number.

Body Part

Port information

For each port:

- Location
- Terminal name
- Arrival date
- Departure Date



Addition: The message is also prepared for reporting number of containers (EQD/EQN, currently not used) and information on the cargo (GID segment).



Business Request

*A terminal operator (ECT Rotterdam) was requesting to report the **expected volume** for a port in addition to the existing information in the message.*

That means: The number of containers planned for load and discharge.

This is needed for planning the load and discharge operations (time window and cranes).

*In this case, the message would report only data for **one port**.*

Requested change

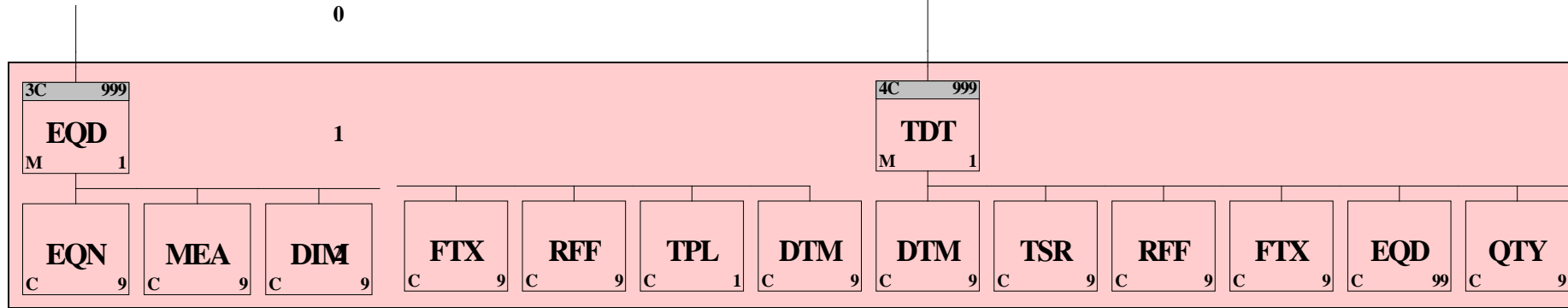
Leave SG2, SG3, SG4 unused

Insert new SG7 (EQD-EQN) on port level

Increase the following SG numbers by 1



USER GROUP FOR SHIPPING LINES AND CONTAINER TERMINALS



LEVEL

0

(not used)

(new)

1

8

10

2

9

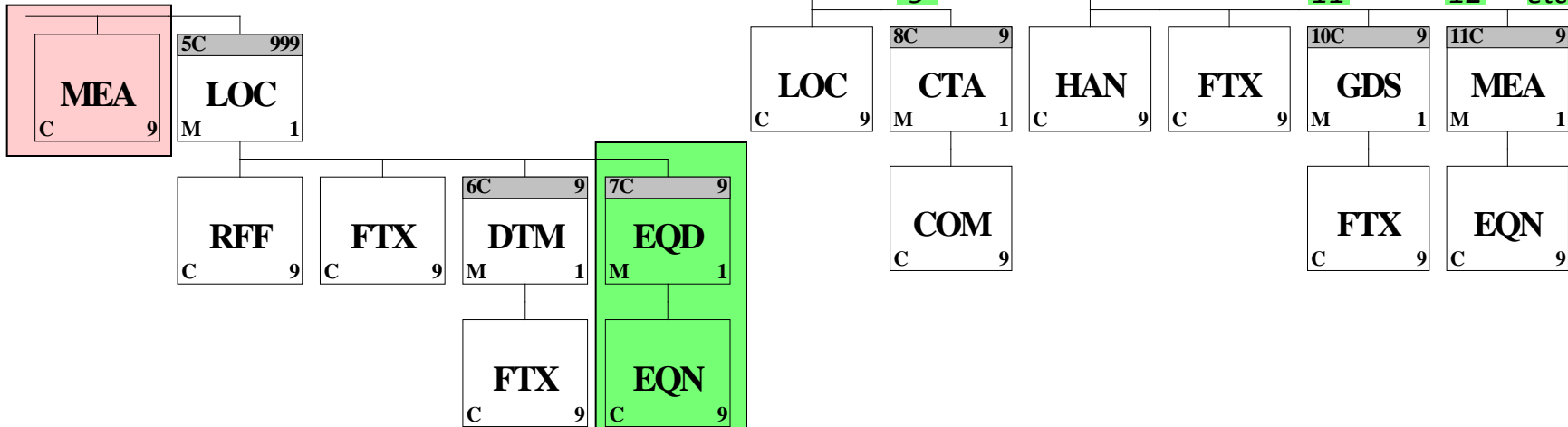
11

12

etc

3

4



Status

- The new message structure was proposed and approved by UN/ECE already in 2011.
- The draft MIG is readily prepared.
Many thanks to Yoshi again for his help.
- The publication of the D.11B directory by the UN/CEFACT is heavily delayed.

Next Steps

1. We expect that UN/CEFACT will publish the new message structure on their website soon.
2. Then the SMDG will also publish the new MIG on their website accordingly.