

## Container Schedule Information IFTSAI



Robert Roestenburg

ECT Rotterdam

25-04-13

61st SMDG meeting at Marseille, France

## Status:

**IFTSAI message D.11B should be published with the new amendments**

IFTSAI - Approved change Leave SG2, SG3, SG4 unused Insert new SG7 (EQD-EQN) on port level:

mentioning load and discharge number of containers

EQD+CN++++3+5' (inbound, Full )

EQN+180'

EQD+CN++++3+4' (inbound, Empty )

EQN+260'

EQD+CN++++2+5' (outbound, Full )

EQN+80'

EQD+CN++++2+4' (outbound, Empty )

EQN+320'

# IFTSAI Open Business Request

- 1. Add Partner Lines** (from PSA Antwerp) The Vessel Operator should mention the Co-Loaders (Partner Lines) that will book cargo on the vessel, and also the voyage number for each Partner Line.
- 2. Include possible feeder connections** (from René Bendt) To show scheduled feeder connections that can be reached with a particular ocean vessel. Based on the business rules of the message sender.  
From the terminal, it helps to decide where to handle the Feeder Vessel for less internal moves
- 3. Cargo Acceptance / Restrictions** (from René Bendt) While the schedule shows the physical route of the vessel, the shipping line will often not accept cargo on all possible port-port combinations. The request is to indicate those corridors where cargo is actually accepted.
- 4. Add Delay Reasons** (from Hapag-Lloyd) If a schedule update shows a delay compared to the original schedule, the vessel operator might give a reason for the delay. The current IFTSAI manual contains only few delay reasons, which are even mixed with other events such as Drydock or Phase in/out.

# IFTSAI Open Business Request

## Items 1. Add Partner Lines (from PSA Antwerp)

The request is: The Vessel Operator should mention the Co-Loaders (Partner Lines) that will book cargo on the vessel, and also the voyage number for each Partner Line. The TDT Segments should be added.

For partner lines its possible mentioning their voyage numbers. This is possible by using the RFF+RF for their export voyage number and using RFF+VON mentioning their import voyage number.

**TDT+20+<VoyageNr Export>+1++<VesselOperator>+++LloydsNr>:2:146:11:  
<VesselName>'**

**RFF+VON:<Voyagenr Import>' (container operator)**

**RFF+RF:<Alternative Export Voyage nr>' ( container operator voyage nr if  
different from TDT voyage nr)**

# IFTSAI Open Business Request

## **Item 2. Include possible feeder connections** (from René Bendt)

But also ECT and Unifeeder have this request.

The request is that the IFTSAI shows the vessel connection for the containers on board of the Feeder. Example: If Feeder vessel A has containers for vessels X, Y and Z then these connecting vessels should be included into the IFTSAI.

For the Terminal, beside known the connection, the combination with the volume is important.

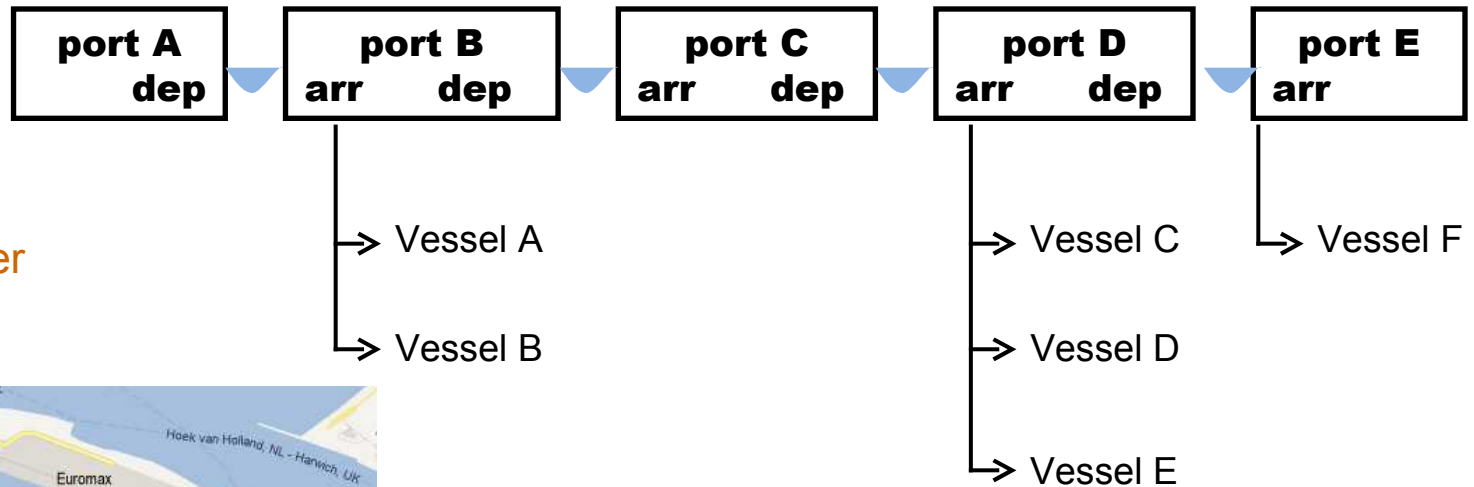
# Explanation for new request

## Include possible vessel connections

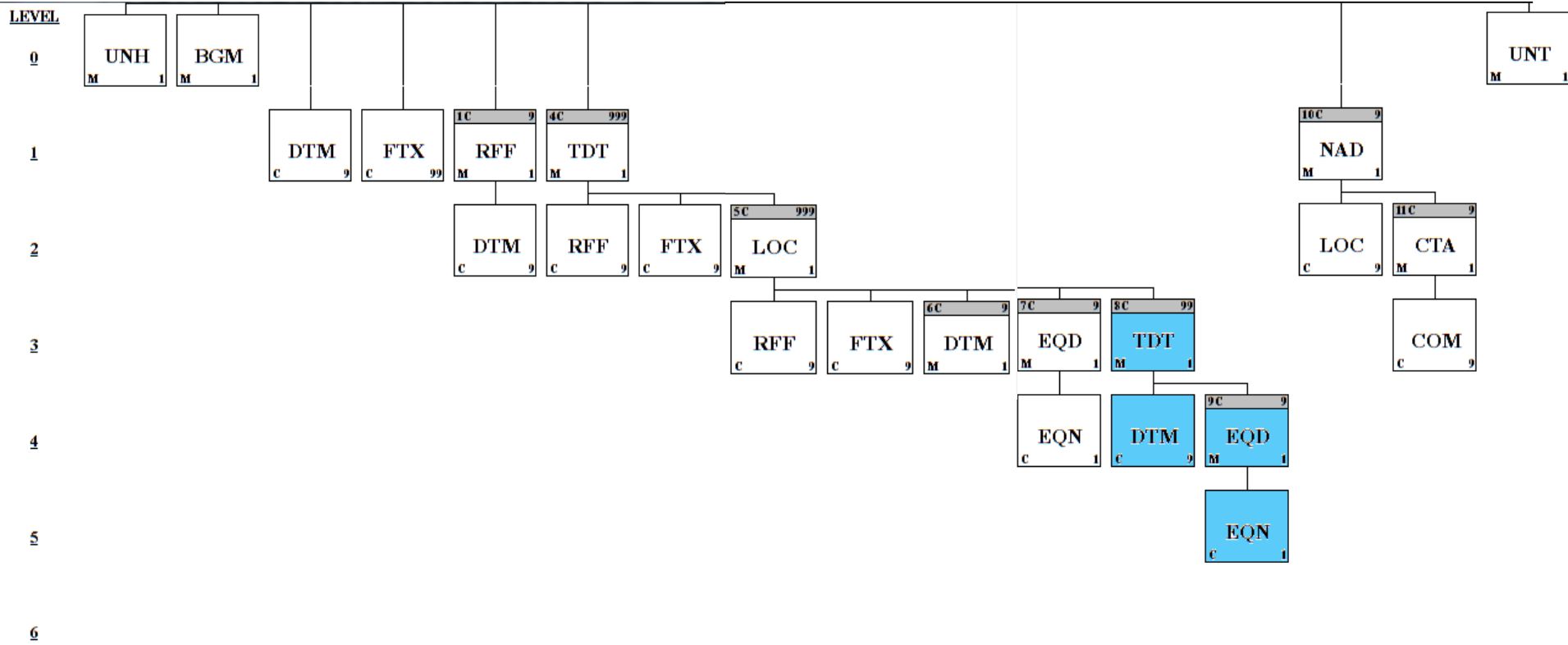
To show scheduled vessel connections that can be reached with the voyage reported in the IFTSAI message. Based on the business rules of the message sender.


Vessel/Voyage reported in the IFTSAI message

Connections to other vessels



# IFTSAI New versions



 = New Part

# IFTSAI Open Business Request

## **Item 3. Cargo Acceptance / Restrictions (from René Bendt)**

The request:

While the schedule shows the physical route of the vessel, the shipping line will often not accept cargo on all possible port-port combinations. The request is to indicate those corridors where cargo is actually accepted.

**FTX grp 5 can be used to mention 'Cargo Actually Accepted'**



# IFTSAI Open Business Request

## Item 4. Add Delay Reasons (from Hapag-Lloyd)

The request is:

If a schedule update shows a delay compared to the original schedule, the vessel operator might give a reason for the delay.

The current IFTSAI manual contains only few delay reason

## Proposal for Delay Reason Codes

### Vessel delay reasons

To be used in FIS Schedule as from 20. November 2011  
 To be inserted by planner in CAPSTAN Coastal Schedule.

DELAY REASONS								EVENT CODE	
Ship related		Cargo related		Shore related		Force Majeure		Remaining Event Codes in FIS	
Code	Text	Code	Text	Code	Text	Code	Text	Code	Text
ENG	Engine repairs	REF	Reefer malfunction	PBC	Arr ON Proforma - Berth congestion	WEA	Bad weather	000	Omission
VGR	Vessel Gear Breakdown	WGT	Misdeclared Cargo weight	CGS	Arr OFF Proforma - Berth congestion	RSC	Save and Rescue	800	Phase-in
PAU	Vessel detained by port authorities	STF	Misstuffed Container	YRD	Yard congestion	VIN	Vessel inspections by Coast Guard	801	Phase-out
EDD	Emergency Dry Docking	LEK	Leaking Container	TEC	Crane breakdown	HOL	Bank Holidays	802	Swap voyage
ACC	Accident involving personnel	CIN	Cargo inspection by Authorities	LAB	Labor Shortage	STR	Strike	803	Drydock
DEV	Deviation to avoid bad weather	SPH	Special cargo handling	LAS	Lashing delays	TID	Tidal restrictions	804	Adhoc call
STW	Stowage adjustment	OTC	Others - Cargo Related	BUN	Bunkering delays	PTF	Port traffic restrictions	805	Cover call
OTV	Others - Vessel Related			PIT	Pilot / Tug not available	OTF	Others - Force Majeure Related	807	Rotation change
MXV	Proforma moves exceeded			CRN	Crane shortage			813	Bunker call
				PRD	Low Productivity			814	Layby
				ANA	Authorities not available				
				QUA	Quarantine Inspection				
				MIL	Military exercise				
				OTS	Others - Shore Related				



USER GROUP FOR SHIPPING LINES AND CONTAINER TERMINALS

# IFTSAI message

<u>Pos. No.</u>	<u>Seg. ID</u>	<u>Name</u>	<u>Req. Des.</u>	<u>Max Use</u>	<u>Group Repeat</u>
0010	UNH	Message Header	M	1	
0020	BGM	Beginning of Message	M	1	
0030	DTM	Date/Time/Period	C	9	
0040	FTX	Free Text	C	99	
0060		Segment Group 1: RFF-DTM	C		9
0070	RFF	Reference	M	1	
0080	DTM	Date/Time/Period	C	9	
0210		Segment Group 4: TDT-RFF-FTX-SG5	C		999
0220	TDT	Transport Information	M	1	
0250	RFF	Reference	C	9	
0260	FTX	Free Text	C	9	
0300		Segment Group 5: LOC-RFF-FTX-SG6-SG7	C		999
0310	LOC	Place/Location Identification	M	1	
0320	RFF	Reference	C	9	
0330	FTX	Free Text	C	9	
0340		Segment Group 6: DTM	C		9
0350	DTM	Date/Time/Period	M	1	
0370		Segment Group 7: EQD-EQN	C		9
0380	EQD	Equipment Details	M	1	
0390	EQN	Number of Units	C	1	
0400		Segment Group 8: NAD-LOC-SG9	C		9
0410	NAD	Name and Address	M	1	
0420	LOC	Place/Location Identification	C	9	
0430		Segment Group 9: CTA-COM	C		9
0440	CTA	Contact Information	M	1	
0450	COM	Communication Contact	C	9	
0630	UNT	Message Trailer	M	1	

25-04-13

61st SMDG meeting at Marseille, France

# IFTSAI New versions

0200		Segment Group 5: LOC-RFF-FTX-SG6-SG7-SG8	C		999
0210	LOC	Place/Location Identification	M	1	
0220	RFF	Reference	C	9	
0230	FTX	Free Text	C	9	
0240		Segment Group 6: DTM	C		9
0250	DTM	Date/Time/Period	M	1	
0270		Segment Group 7: EQD-EQN	C		9
0280	EQD	Equipment Details	M	1	
0290	EQN	Number of Units	C	1	
0300		Segment Group 8: TDT-DTM-SG9	C		99
0310	TDT	Transport Information	M	1	
0320	DTM	Date/Time/Period	C	9	
0330		Segment Group 9: EQD-EQN	C		9
0340	EQD	Equipment Details	M	1	
0350	EQN	Number of Units	C	1	

# IFTSAI New versions



New version will be

IFTSAI:D:13B:UN:SMDG50

25-04-13

61st SMDG meeting at Marseille, France

Questions ?

**Thank you for your attention**