



موانئ دبي العالمية
DP WORLD



إكسبو 2020 EXPO
دبي، الإمارات العربية المتحدة
DUBAI, UNITED ARAB EMIRATES

Global Ports connecting Global Markets





DP World's Portfolio as of September 2013



- Over 65 terminals across 6 continents
- Capacity set to rise to ~100 m TEU by 2020 (time dependent on market)

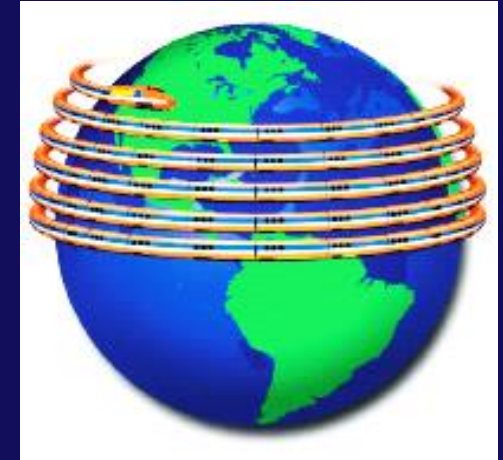


- More **than 65** terminals across six continents ⁽¹⁾
- In 2013, we handled 55 million TEU (twenty-foot equivalent units) across our global portfolio of container terminals, with gross container volumes growing by 0.7% on a like-for-like basis
- The UAE delivered another record year handling 13.6 million TEU in 2013, representing growth of 2.7%
- Expansion to meet future customer needs
 - 2020 ~100 million TEU, depending on market demand
- Team of 28,000 staff
- Top 3 Global Operator ⁽²⁾

Awards – UAE Region

2013

- Mohammed Bin Rashid Al Maktoum Business Award (MRMBA) – Best Performing Company in UAE
- Asian Freight & Supply Chain Awards (AFSCA) - Best Seaport in Middle East Jebel Ali (19th consecutive year)
- Annual Supply Chain & Transport Awards (SCATA) - Shipping Port of the Year
- World Travel Awards 2013 - Middle East Leading Cruise Port (6th consecutive year) – Dubai Cruise Terminal
- Seatrade Middle East & Indian Subcontinent Awards – Container Terminal Operator Award – DP World, UAE Region
- Seatrade Middle East & Indian Subcontinent Awards – Corporate Social Responsibility Award



Over a year, laid end to end, the boxes we handle would circle the world more than six times

- (1) As of February 2014.
 (2) Measured by equity-based throughput. Source: Drewry Shipping Consultants



موانئ دبي العالمية
DP WORLD

DP World UAE Region



إكسبو 2020
دبي، الإمارات العربية المتحدة
DUBAI, UNITED ARAB EMIRATES



موانئ دبي العالمية
DP WORLD

Jebel Ali Port – Nurturing Trade, Geared for Growth



A Vision Realised!



إكسبو 2020
دبي، الإمارات العربية المتحدة
DUBAI, UNITED ARAB EMIRATES



Cargo Base

- Access to wider Region of 2 Billion people (largest OND market)
- World's 3rd largest Re-export market

Why Jebel Ali Port?

Product

- Technically Advanced Infrastructure
- High productivity and scope for further increase
- Capacity for growth

Connectivity

Gateway to the region :

- Road
- Air
- Sea
- Rail (Future)



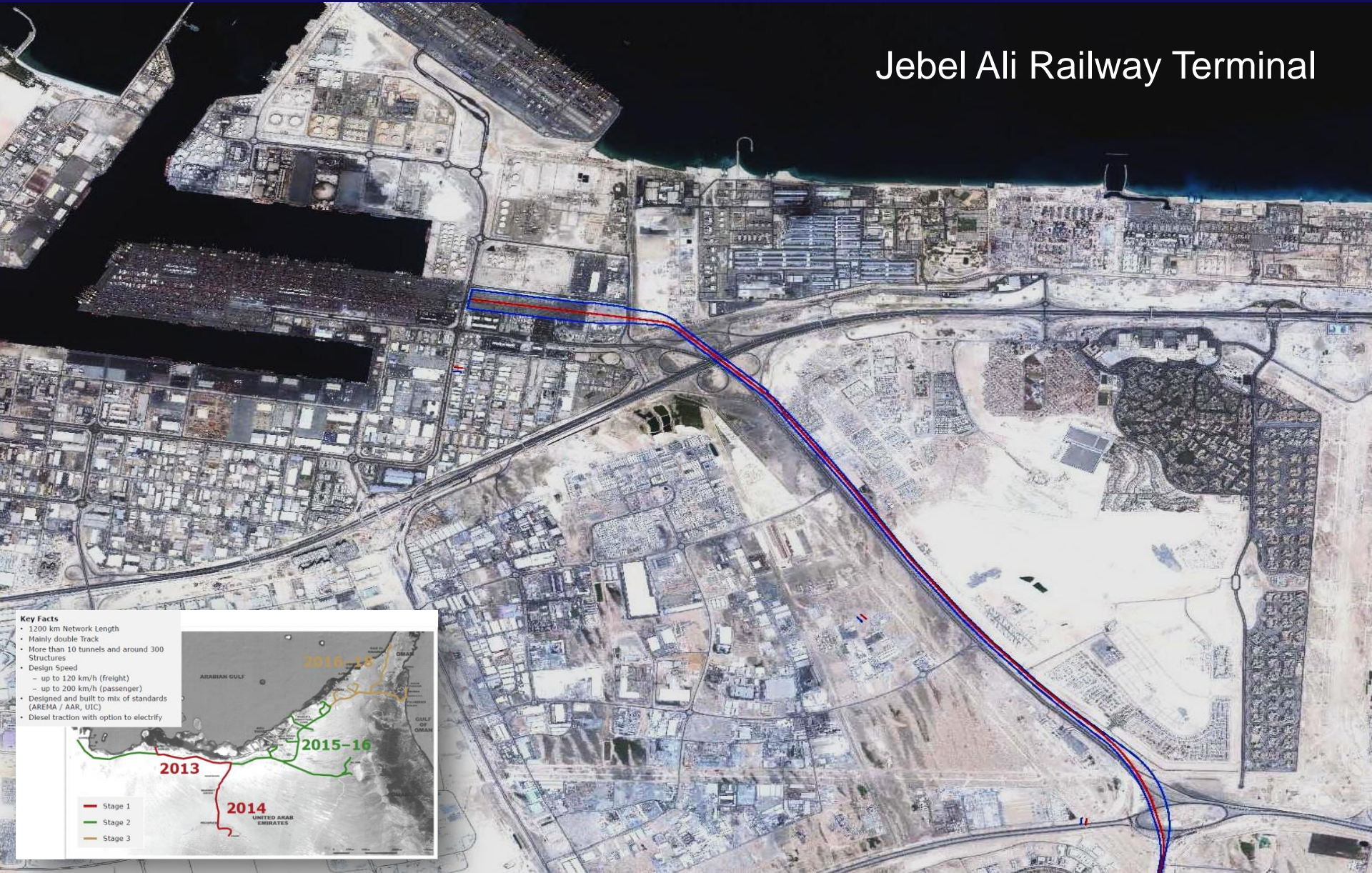
موانئ دبي العالمية
DP WORLD

Jebel Ali Port – Multimodal Platform

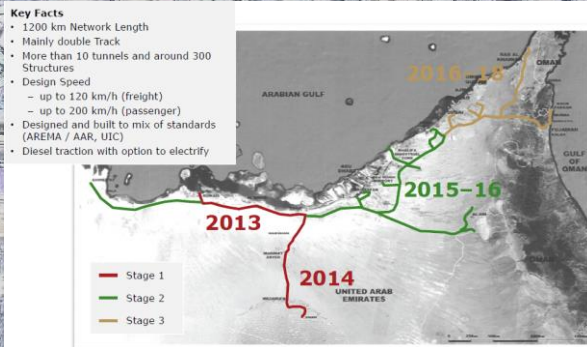




Jebel Ali Railway Terminal



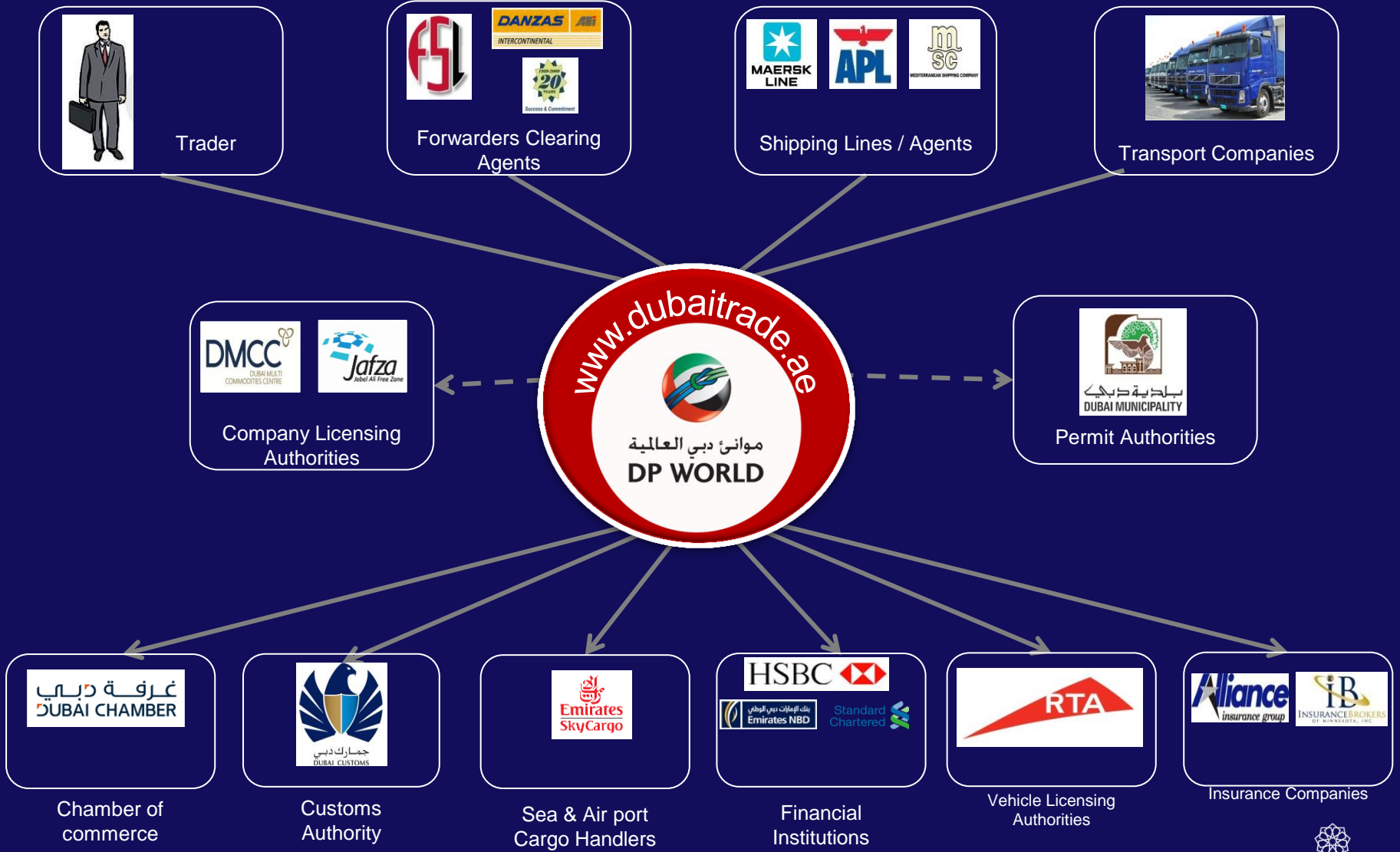
- Key Facts**
- 1200 km Network Length
 - Mainly double Track
 - More than 10 tunnels and around 300 Structures
 - Design Speed
 - up to 120 km/h (freight)
 - up to 200 km/h (passenger)
 - Designed and built to mix of standards (AREMA / AAR, UIC)
 - Diesel traction with option to electrify





موانئ دبي العالمية
DP WORLD

Port Community Portal





موانئ دبي العالمية
DP WORLD

UAE Region Portfolio



إكسبو 2020
دبي، الإمارات العربية المتحدة
DUBAI, UNITED ARAB EMIRATES



Fujairah Container Terminal

- Flexible storage policy
- Connectivity to the hinterland
- 0.9 Million TEU capacity



Mina Rashid Cruise Terminal

- The GCC's largest Home Port
- The only port in the Gulf where a Cruise ship was named (COSTA DELIZIOSA)
- Mina Rashid resumes Passenger Ferry services to Regional destinations





Mina Rashid Coastal Berth

- Berths (no.): 5
- Depth Alongside (m): 5
- Terminal Area (ha): 61.5



Mina Al Hamriya

- Al Hamriya plays a key role in facilitating non-containerised cargo movements between Dubai and countries in the Gulf, South Asia & East Africa
- 14 berths





Jebel Ali Port – Nurturing Trade, Geared for Growth



Facility	Capacity	Details
Container Terminal	15 Million TEU (19 Million TEU 2014)	23 berths (6 berths 2014), 78 cranes (19 cranes 2014)
General Cargo, RORO	Over 1.4 million sqm storage facility	26 berths
Container Freight Station	135,000 sqm	LCL goods and consolidation cargo
Cool Store	Over 3,900 sqm	+10° C to +20° C
Cold Store	Over 5,765 sqm	-29° C to +13° C
Tank Terminal	11 berths	Petroleum and petrochemical products

For further enquiries, please contact below:

customerservice@dpworld.com

Tel: Toll Free number 800-DPWUAE (800-379823)

(Operational from 07:00AM - 05:30PM, Saturday to Thursday)

Fax: +971 4 881 6271

marketing@dpworld.com

Tel +971 4 881 5555

Fax +971 4 887 6470

www.dpworld.ae