

SOLAS VGM

IFTMBF and IFTMIN Messages



Robert Roestenburg & Yoshi Kito
29th September 2015, Malta

Actions after the last meeting in Malmo - 1

1. Decisions at the last meeting in Malmo:

It was decided that the works would be undertaken by the following members:

BAPLIE/MOVINS 2.x & 3.x versions	Jost
COXXXX 2.x versions	Paul, Jasmin
VERMAS (new message)	Michael
IFTXXX	Yoshi and Robert
DMR (Data Maintenance Request)	Jasmin, Paul, Yoshi

2. A major shipping line approached to me to collaborate to review & update IFTMBF & IFTMIN to be used **between a shipping lines and a shipper/their agents** (early July, 2015)
3. Robert and I have been participating in the e-meeting chaired by Jost/Michael since the last meeting
4. It might be difficult for me to find out what kinds of data are transmitted from a shipper to a shipping line
5. Through the major shipping line's collaboration, we decided to get the following data from a shipper/their agents in addition to the existing data in IFTMBF and IFTMIN:
 - Data related to **"VGM weight"**
 - Data related to **"VGM method (method 1 or method 2) "**
 - Data related to **"VGM maker (Weighing Party)"**

Actions after the last meeting in Malmo - 2



6. SMDG is not an organization to develop and maintain the MIGs of Freight Movement messages (IFTMXX series) and is only responsible for Equipment Movement messages (COXXXX series) & Stowage Instructions & Report messages (BAPLIE & MOVINS).
7. ITIGG is only responsible to develop and maintain the “General Recommendation” & “Freight Movement P&R” and not responsible to develop a specific MIG of the Freight Movement messages.
8. These make us difficult situation how to find out a suitable MIG of IFTMIN/IFTMBF which has been implemented globally used in shipping lines and shippers community.
9. INTTRA participated in the e-meeting also major shipping lines are members of INTTRA.
10. The MIGs developed by INTTRA and a major shipping lines were developed based on **D.99B**, which have being used up to now.
11. We tried to apply methodology including code/qualifiers (including temporary codes) adopted in COXXXX, BAPLIE and VERMAS as possible.
12. Additional data required and result of mapping are shown on the next page.



Actions after the last meeting in Malmo - 3

Mapping the data into IFTMIN & IFTMBF based on D.99B

Additional data required by SOLAS VGM	Segment to be mapped in IFTMIN	Segment to be mapped in IFTMBF
Data related to VGM weight	Pos. 1690 MEA/ SG37 (EQD)	Pos. 1310 MEA/ SG32 (EQD)
Data related to VGM method	Pos. 1750 FTX/ SG37 (EQD)	Pos. 1350 FTX/ SG32 (EQD)
Data related to Weighing Party	Pos. 1860 NAD/ SG39 /SG37(EQD) Pos. 1890 CTA/ SG40 /SG39/SG37(EQD) Pos. 1900 COM/ SG40 /SG39/SG37(EQD)	Pos. 1380 NAD/ SG33 /SG32(EQD) Pos. 1410 CTA/ SG34 /SG33/SG32(EQD) Pos. 1420 COM/ SG34 /SG33/SG32(EQD)

13. MIGs of IFTMBF & IFTMIN have been developed, implemented and maintained by each community and business partners. Our proposal is that SDMG only recommend to develop a guideline how to map the additional data into IFTMBF & IFTMIN respectively. Details is shown on the next page.

Actions after the last meeting in Malmo - 4

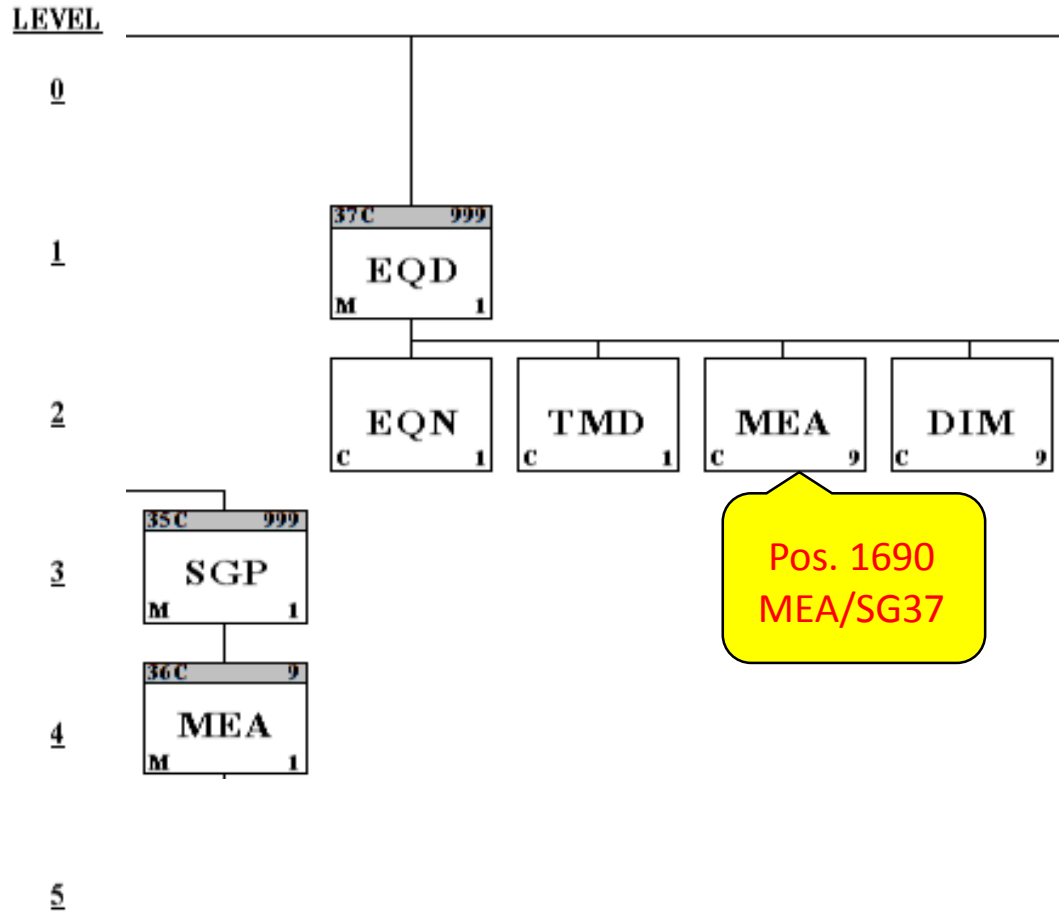
Recommended mapping the data into IFTMIN & IFTMBF

Additional data required by SOLAS VGM	Segment to be mapped in IFTMIN	Segment to be mapped in IFTMBF
Data related to VGM weight	MEA/EQD Group	MEA/EQD Group
Data related to VGM method	FTX/EQD Group	FTX/EQD Group
Data related to Weighing Party	NAD/NAD Group/EQD Group CTA/CTA Group/NAD Group/EQD Group COM/CTA Group/NAD Group/EQD Group	NAD/NAD Group/EQD Group CTA/CTA Group/NAD Group/EQD Group COM/CTA Group/NAD Group/EQD Group

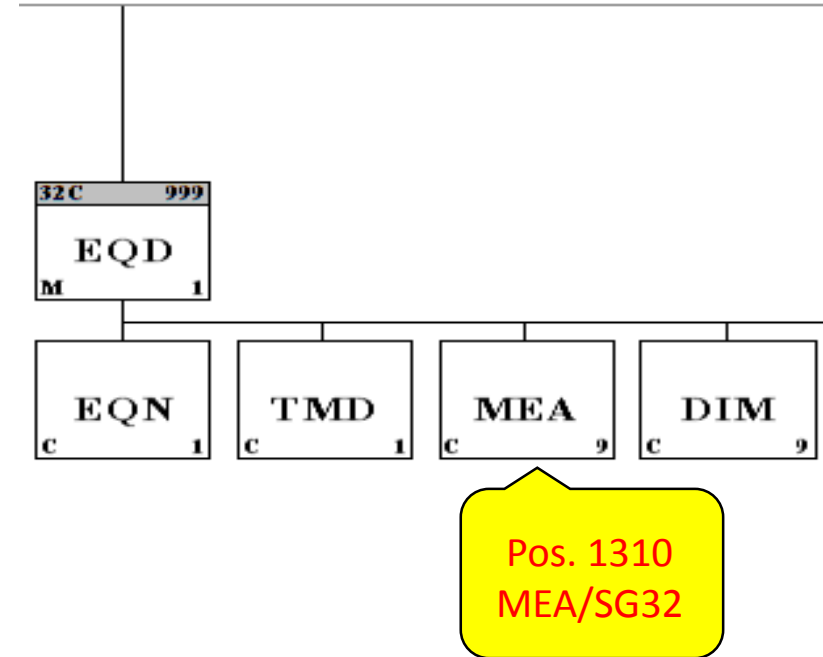
14. Next slides show the position in each message structure for your clear understanding. (D.99B)

Data related to "VGM weight"

IFTMIN



IFTMBF



Data related to "VGM method"

IFTMIN

IFTMBF

Pos. 1750
FTX/SG37

Pos. 1350
FTX/SG32

Data related to "VGM maker (Weighing Party)"

LEVEL

0

IFTMIN

IFTMBF

1

Pos. 1860
NAD/SG39

Pos. 1380
NAD/SG33

2

Pos. 1890
CTA/SG40

Pos. 1410
CTA/SG34

3

4

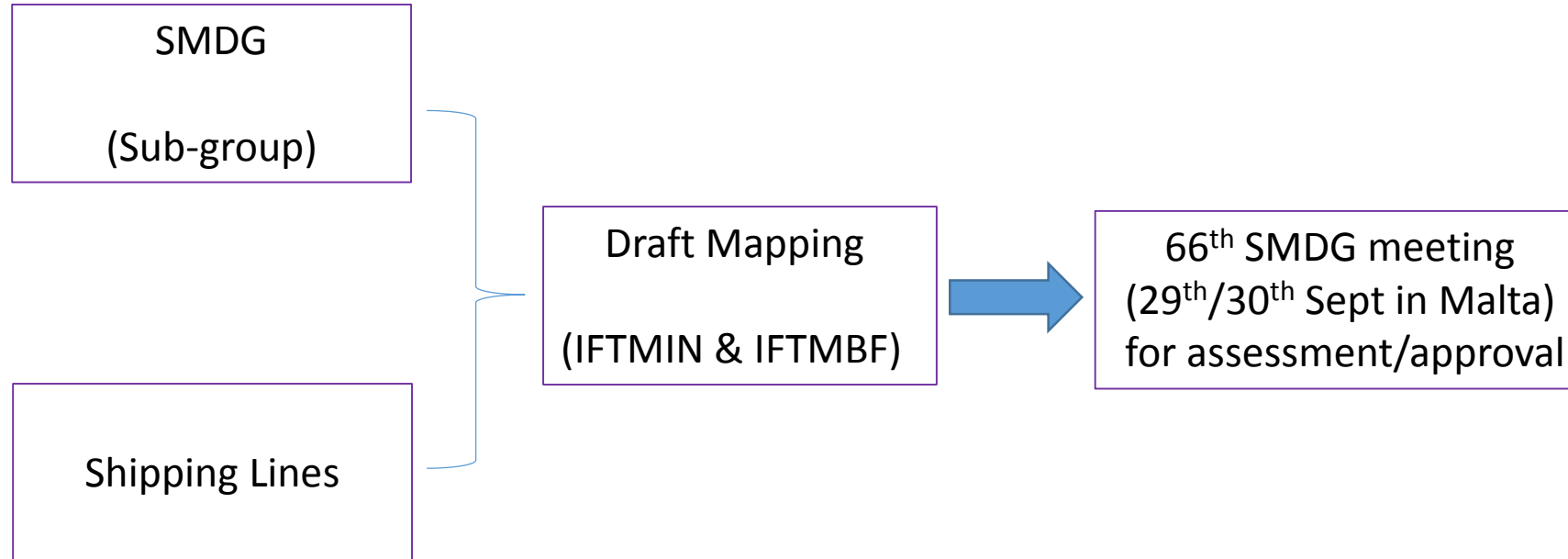
5

Pos. 1900
COM/SG40

Pos. 1420
COM/SG34



Work flow up to now and future - SMDG



Work flow up to now and future - Shipping Lines

