



SMDG e. V. #73// NLMSV home of

secretariat@smdg.org



12-13-14 February 2019

SMDG e. v. #73// NLMSV home of



Meeting #73 Delegate Brochure light



Welcome to SMDG e.V. #73 for an amazing man year of work in 3 days
Full immersion into the Business in the middle of 3 terminals, up to 65 professional practitioners, Business owners, IT managers, from Carriers, Terminals, Logistic, Vessel, It providers, Institutions...60 hours of multiple sessions – 2 network events -15 themes – one goal

Check our brochures and register

- The purpose of SMDG e.V. is to discuss possibilities to standardize exchange of information on a variety of business fields in the container shipping industry
- It is important to recognize that these activities are subject to certain legal limits imposed by antitrust laws.
- One central concern of these laws is with combinations or agreements in restraint of trade whereby competition is reduced by design.
- Consequently, in the course of all SMDG e.V. activities, discussions among members involving pricing, sale terms, territories, production or other aspects of competition, must be avoided.
- In the event any member ever feels that the course of SMDG e.V. association activities or statements or actions in association meetings is headed into such an area, members should raise the issue immediately so that further discussion of such matters can be suspended pending receipt of advice satisfactory to the members that the topics addressed do not give rise to antitrust problems

Google Translate not working? Join Us

UNB+UNOA:2+SMDGGGEFEG19A+PUBLIC+181030:1553+3103300+++++UNKNOWN'	DTM+132:200212:101'
UNH+SMDGGGEFEG19A+BAPLIE:D:95B:UN:SMDG22'	LOC+147+0620282::5'
BGM++R0C525E331CC7D+9'	MEA+WT++KGM:5000'
DTM+137:1810301553:201'	LOC+9+DEHAM:139:6'
TDT+20+SMDG71S+++ :172:20+++FOUH:103:ZZZ:SMDG Plenary #73'	LOC+11+SGSIN:139:6'
LOC+5+DEHAM:139:6'	RFF+BM:1'
LOC+61+NLMSV:139:6'	EQD+CN+SMDU20192021 73+45G0+++5'
DTM+133:1810111900:201'	NAD+CA+SMD:172:20'
	UNT+16+SMDGGGEFEG19A'
	UNZ+1+3103300'

Table of content Meeting #73

<u>Meeting #73 NLMSV presentation</u>		1-35
<u>Objectives of the meeting #73</u>	06-07	
<u>Rotterdam EDI business case</u>		08-13
<u>Agenda #73 – see SMDG e.V. Brochure</u>	XX-XX	
<u>Schedule – See SMDG Brochure</u>		XX-XX
<u>Timing – See SMDG Brochure</u>	XX-XX	
<u>Expected Delegates – See SMDG Brochure</u>		XX-XX
<u>Rooms requested and set UP</u>	14-18	
<u>Hotel recommendation</u>		19
<u>Registration Questionnaire</u>	20-22	
<u>Future Meetings and objectives – See SMDG Brochure and</u>		23-28
<u>End of document-</u>		

Meeting #73 Draft Objectives -- Rational for the location -- Agenda



SMDG e. V. meeting #73 Objectives

Objectives:

- DMR 19 A/B for IFTMBF, BAPLIE, MOVINS, IFTISAI, TPFREP/ Industry process and communication
- CODE LISTS management (type, country, terminal, depot, handling..)/ Industry process and communication
- Web services
- Blockchain

Main Hosts: APMT, ECT, RWG TBC Network Host: TBC

Board objectives:

- Speed up 19A-B DMR and MIG, IFTMBF--IFTSAI--CODES
- Publish recommendation to update to **A/B for every format—BP – Coprar –TPFREP...
- Extend SMDG standardization work to regional carriers Europe, main shippers and IT/Banking providers : ICL, Samskip, Unifeeder, DHL, JOS, ABN/AMRO(BC), finalize subgroup blockchain
- Move along with statutes, fees, admin set up, web sites...

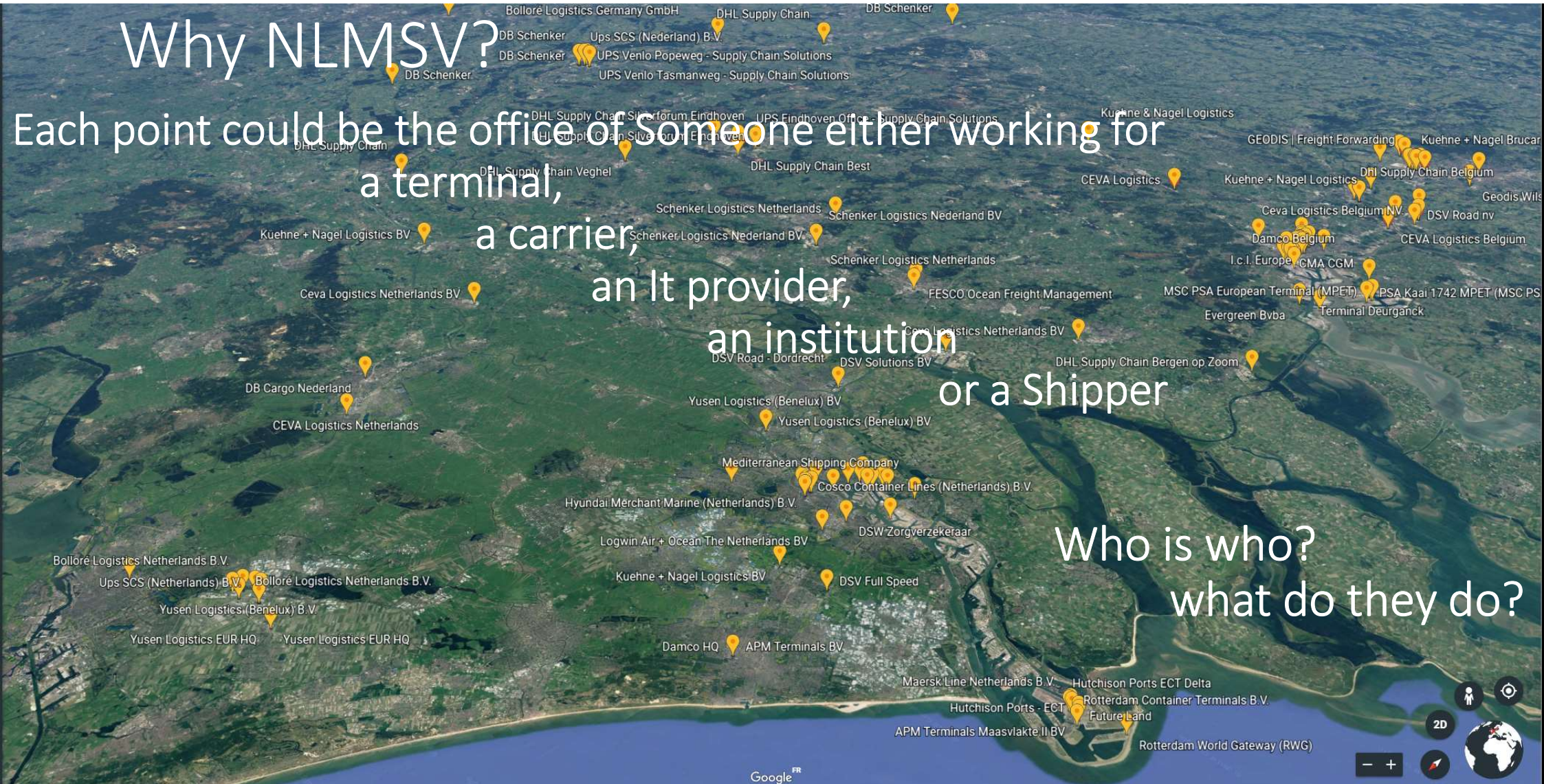
Meeting #73 NLRTM EDI Business case



Why NLMSV?

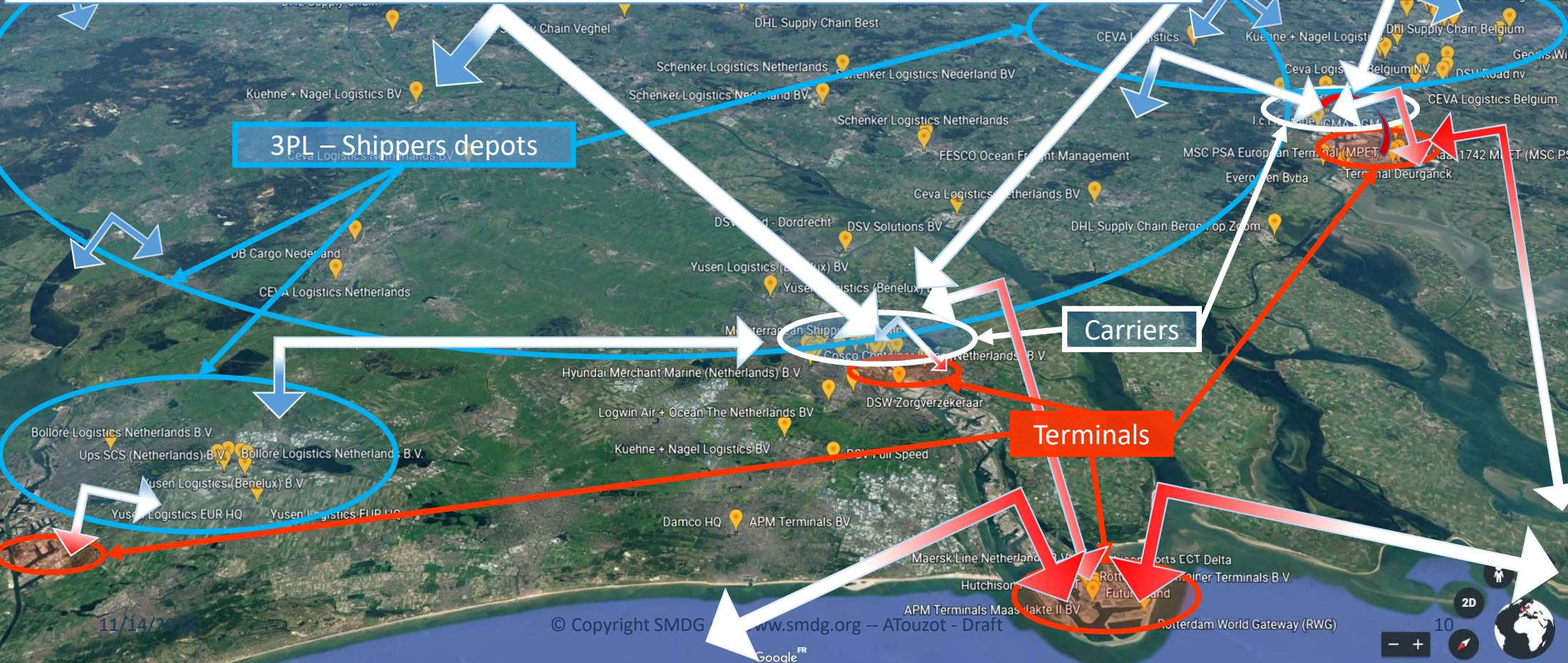
Each point could be the office of someone either working for
a terminal,
a carrier,
an IT provider,
an institution
or a Shipper

Who is who?
what do they do?



Why Rotterdam?

100,000,000 EDI SMDG files exchanged / year for 11,000 calls and 24,000,000 TeuMove



11/14/2018





Why Rotterdam?

1/ 13 M Teu moved and 24 M Teu counting with BEANR for 11,000 calls or 2300 Teu moves/ calls

2/ 6 big terminals players APMT, ECT Hutchinson, RWG, PSA Antwerp, TIL, COSCO in technical exchange

to serve efficiently all 3 alliances that consolidate 10 of the top 10 carriers feedered by 12 regional carriers for an aggregate of 90% of the world fleet capacity,

To deliver goods to 100 M plus people through 25 + global 3PL companies

3/ About 150,000,000 + SMDG e. V. - UNEDIFACT messages exchanged on the logistic platform (NLR TM- NLMSV-BEANR) or 375,000/ days to notify schedule, container arrivals, VGM, Depot, bayplan, TPFREP...or 3% of the world traffic on 1 restricted area. Perfect business case to write DMR and MIG and imagine the new standards to make our life easy

4/ Major innovation cluster for SMDG (birth place of SMDG in 1980's), OneStop port services, terminal Automation/TOS, Blockchain (CGI, ABN-AMRO, Tradelens..)

2017	NLMSV+NLRTM			BEANR			Total
Incoming	Empty	Loaded	Total	Empty	Loaded	Total	Total
Total containers	684,992	3,568,507	4,253,499			3,128,652	7,382,151
Total TEU	1,167,757	5,963,762	7,131,519			4,969,248	12,100,767
T			71,941,000			53,864,115	125,805,115
Outgoing	Empty	Loaded	Total	Empty	Loaded	Total	Total
Total containers	842,274	3,098,459	3,940,733			3,430,082	7,370,815
Total TEU	1,405,258	5,197,557	6,602,815			5,481,652	12,084,467
T			70,701,000			69,105,324	139,806,324
Total	Empty	Loaded	Total	Empty	Loaded	Total	Total
Total containers	1,527,266	6,666,966	8,194,232			6,558,734	14,752,966
Total TEU	2,573,015	11,161,319	13,734,334	1,549,062	8,901,837	10,450,900	24,185,234
lifting T in Tons			142,642,000			122,969,439	265,611,439
Number of calls			7,108			4,094	11,202

2017	NLMSV+NLRTM			BEANR			Total
Incoming	Empty	Loaded	Total	Empty	Loaded	Total	Total
Total TEU/ container	1.70	1.67	1.68			1.59	1.64
T/TEU			10.09			10.84	10.40
T/container			16.91			17.22	17.04
Outgoing	Empty	Loaded	Total	Empty	Loaded	Total	Total
Total TEU/ container	1.67	1.68	1.68			1.60	1.64
T/TEU			10.71			12.61	11.57
T/container			17.94			20.15	18.97
Total	Empty	Loaded	Total	Empty	Loaded	Total	Total
Total TEU/ container	1.68	1.67	1.68			1.59	1.64
Total T/ TEU			10.39			11.77	10.98
Total T/container			17.41			18.75	18.00
Total ave Teu/call			1,932.24			2,552.74	2,159.01
Total ave container/ call			1,152.82			1,602.04	1,316.99
Total ave lifting In T/call			20,067.81			30,036.50	23,711.07
Total Edi per Year between	55,848,571	and	94,766,905	32,167,143	and	72,111,210	127,446,914
Total Edi per days between	159,567	and	270,763	91,906	and	206,032	364,134
total Edi per call in average	7,857	and	13,332	7,857	and	17,614	11,665
total average Edi per container	6.82	and	11.57	4.90	and	10.99	8.57
total average Edi per teu	4.07	and	6.90	3.08	and	6.90	5.24

source throughput-port-of-rotterdam-2017.pdf, Statistisch_Jaarboek_2017.pdf

source: 5.5 B Edi for 700,000 calls in 2014 SMDG 2016 -- source SMDG terminal of 1 Mteu/ year having about 7.5 M EDI / year

Rotterdam position with deepsea vessels and barges (AIS)



NLMSV 2050

Future projects How many EDI exchange in 2050?

¼ Billions per years?

How many ledgers-transactions?

Meeting #73 Draft Agenda



Meeting #73 Rooms requests
and set up for the different events incl boat and futureland location



Full immersion into the Business

SMDG e. V. #73 Site Futureland

Europweg 902 Maasvlakte Rotterdam

<https://www.futureland.nl/en/>

The Port of Rotterdam has been expanded with the most modern European top location for port activities: Maasvlakte 2.

FutureLand information centre is located in the center of this port area and has views across the container terminals of the future.

There's much to see, do and learn about the construction and design of Maasvlakte 2 in this free information center. FutureLand is suitable for young and old, for landlubbers and water rats, and port enthusiasts and gamers. You can enjoy views of the automatic container transshipment and the world's biggest container ships.



Boat Tour Tuesday Evening

Container tour 1 - 2

The FutureLand Ferry regularly sets sail for a particularly extensive boat trip, taking you past the newest Maasvlakte 2 container terminals to Europahaven at Maasvlakte.

Here you can witness the existing container terminals in full operation. The guide explains the differences and similarities between existing terminals and the new RWG and APM Terminals, where containers have been loaded and unloaded since 2014.

Depending on pricing and fund raising maybe 2 boat tour could be organized

Drinks and snack food provided on board

Networking event sponsor : TBD



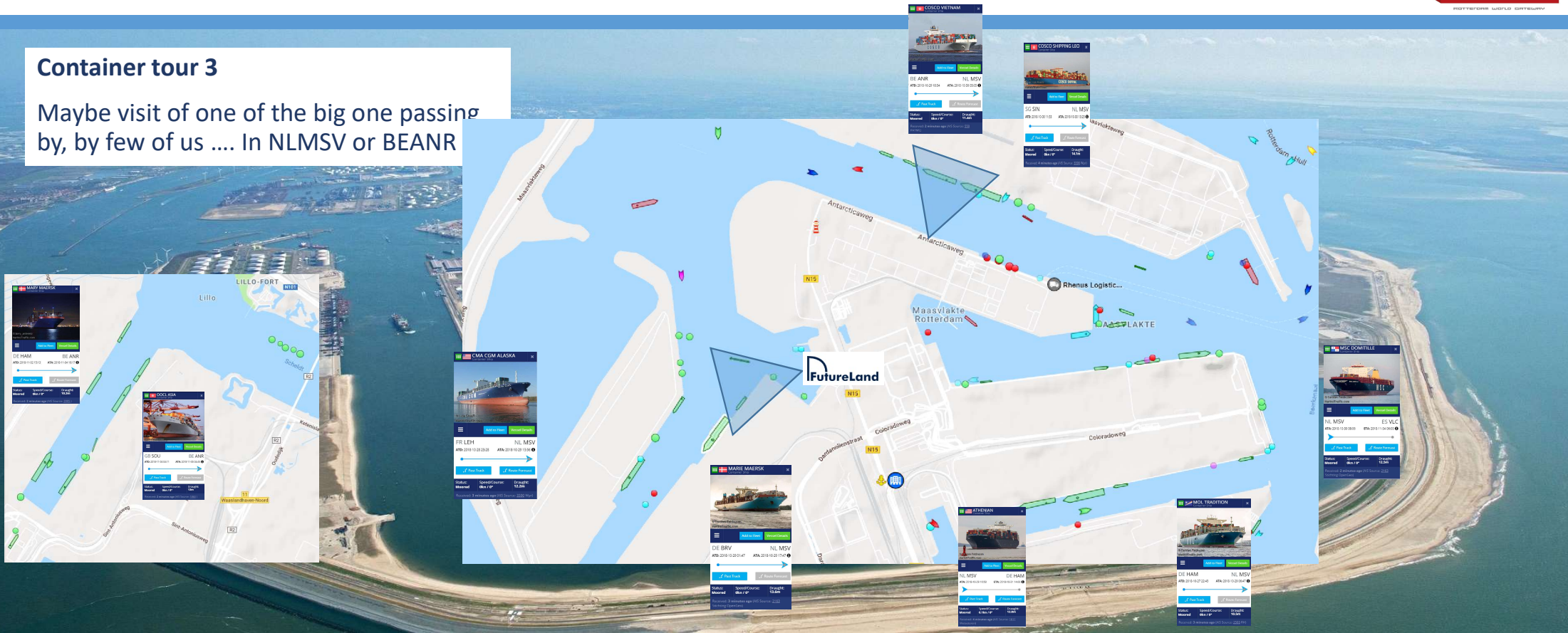
e. v. #73// NLMSV home of



Boat Tour 3 Evening if we are lucky

Container tour 3

Maybe visit of one of the big one passing by, by few of us ... In NLMSV or BEANR



Rooms setting Network event

- 40-60 delegates –
Dream case 70 delegates
- VIP room arrangement for the plenary to install after
- Restaurant could be also considered



Hotels recommendations

To be advise before 15/11/2018

In coordination with host and location host futureland for the bus/boat pick up in the morning and evening

Monitoring Hook of Holland



Google Translate still not working? Join Us

UNB+UNOA:2+SMDGGFEG19A+PUBLIC
+181030:1553+3103300++++UNKNOW
N'

UNH+SMDGGFEG19A+BAPLIE:D:95B:U
N:SMDG22'

BGM++R0C525E331CC7D+9'

DTM+137:1810301553:201'

TDT+20+SMDG71S+++172:20+++FOUH:
103:ZZZ:SMDG Plenary #73'

LOC+5+DEHAM:139:6'

LOC+61+NLMSV:139:6'

DTM+133:1810111900:201'

DTM+132:200212:101'

LOC+147+0620282::5'

MEA+WT++KGM:24000'

LOC+9+DEHAM:139:6'

LOC+11+SGSIN:139:6'

RFF+BM:1'

EQD+CN+SMDU20192021 73+45G0+++5'

NAD+CA+SMD:172:20'

UNT+16+SMDGGFEG19A'

UNZ+1+3103300'

Meeting #73 Registration questionnaire - Draft



Registration

Please send an e-mail to secretariat@smdg.org

Please state:

- Name of company
- Name of person(s)
- Phone
- E-mail
- Member Yes/No
- Need of invitation letter for Visa
- Boat tour - Network Event participation
- Hotel accommodation request: please indicate date and means of arrivals and departure
- Days participations
- Subject of interest:
 - MIG-DMR- Process/ Best Practices/ recommendations – Codes
 - Baplie/ Movis- Container Messages (COPRAR-CPARN-COARRI-CODECO-...) - TPFREP-IFTSAI-IFTMBF-RORO-CONRO – Std Ship Profile
 - Webservices-Blockchain-
- Conference fees is free for members - Upon request for non members

SMDG will define the Futureland scape of Container shipping communication in 2019



NLMSV - 12-13-14 February 2019

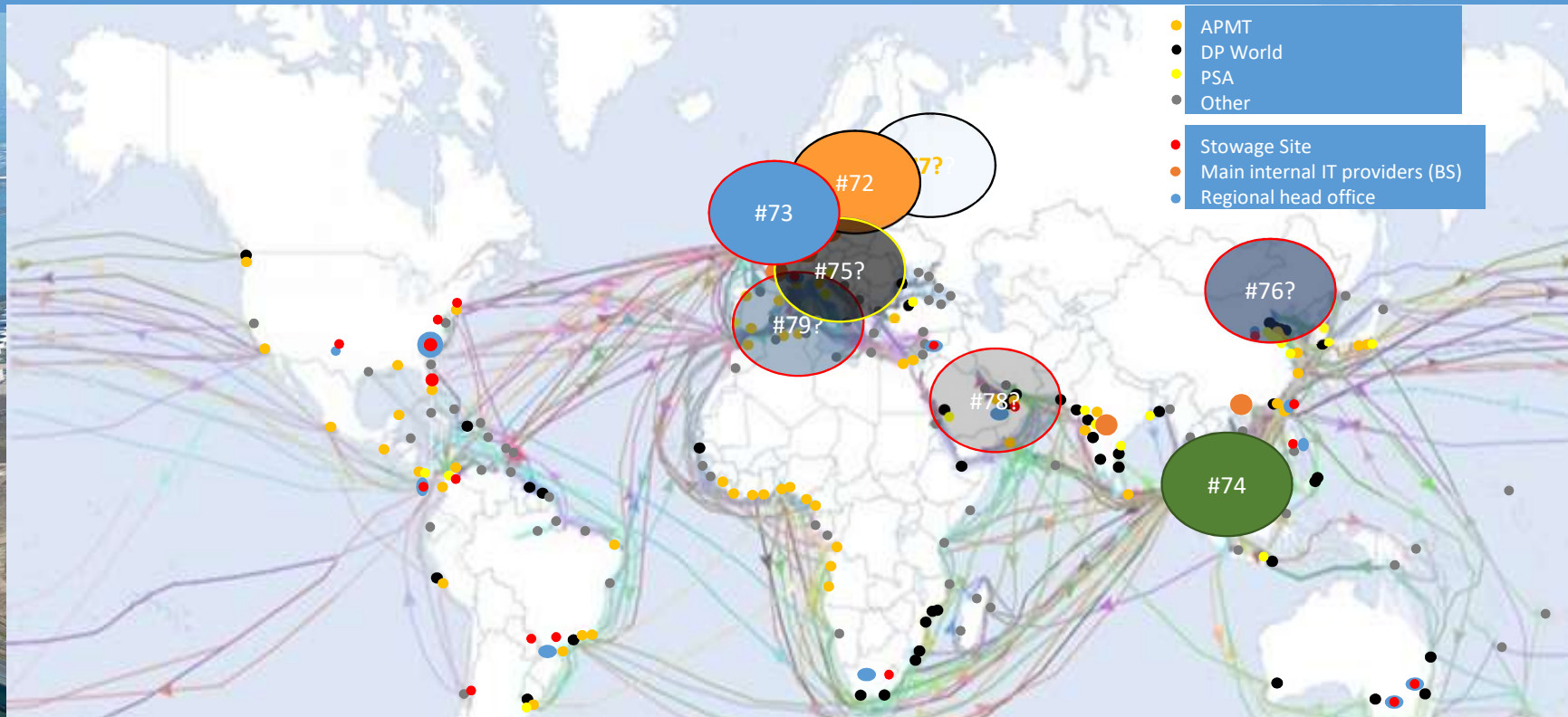


Meeting #74 Future meetings/ draft



Future Meetings

Subject to Chairman, Board, Plenary approval, Funding and hosts confirmation...but it would be sweet



Location	Port	Quay	Voyage1	Bound1	Voyage2	Bound2	State	ETA	ATA	ETD	ATD	Berthing	Unberthing
DEHAM	Hamburg		SMDG71S		SMDG72N		TerminalReportRe	09.10.2018 09:00		11.10.2018 19:00		09.10.2018 08:30	11.10.2018 19:30
NLMSV	Maasvlakte		SMDG72N		SMDG73E		PreplanSent	12.02.2020 09:30		14.02.2019 15:22		12.02.2019 08:22	14.02.2019 15:22
SGSIN	Singapore		SMDG73E		SMDG74W		Planning	17.09.2019 09:00		19.09.2019 18:15		17.09.2019 08:30	19.09.2019 19:30
CHGVA	Geneve		SMDG74W		SMDG75E		Open	13.02.2019 09:00		15.02.2019 18:15		13.02.2019 08:30	15.02.2019 19:30
CNSHG	Shanghai Pt		SMDG75E		SMDG76W		Open	17.09.2020 09:00		19.09.2020 18:00		17.09.2020 08:30	19.09.2019 19:30

secretariat@smdg.org

- Special thanks to Mr Shröder from Hapag-Lloyds for all his precious slides and docs to prepare this document, having set the bar really high with HHLA and Xvela/ NAVIS CVS
- Mr Jost Müller for his diverse work on SMDG baplie and movins as well as setting up SMDG e.V
- SMDG Board, SMDG Subgroups Chairperson, Sub-group members, members and Guests
- Our future host and event sponsors

The Challenge of the secretariat General

Open to all lines, Logistic providers and terminals all IT provider

X Terminals: APMT – ECT – RWG – PSA – MSC – PSA DPW – HHLA – Eurogate...

X carriers- Vessel owners: – MSK – MSC – COS – CMA – HLL – ONE – EVA – ZIM – XPC – UNI – EUC

x Logistics – Khune and nagel – Medlog – Damco – Bolloré log – CEVA -

X software provider: Hyland – CGI – Navis – Cyberlogitec – TSB – COPAS – Port Base – Kokumation – GEFEG – EXIS.....

How many EDI per TEU loaded for (MSK,CMA,HLL, ONE...)

in terminal (APM/EUR, PSA/RWG,HLA/RWG, ECT/EUR...)

for a 2XXX/ Std, DG, RF, OOG- 4XXX/ Std, DG, RF, OOG

for Vessel xx Calling in terminal xx from

the time of booking to the picture when loaded and vessel departed? –

from the booking order (voyage vessel schedule EDI included / carrier side) to sending the TPFREP after departure

How to Win:

1/ Build your team – with at least – 1 terminal – 1 carrier/ vessel owner – 1 Logistic Provider – 1 It providers (Internal and/or external) (It could be a sub group also)

2/ Pick a container Container number – type – Commodities – Company – Terminal – Transshipments – Barge – road – train – date of booking – picture of loading

3/ Number of EDI/ Types/ Mode (e-mail – soap...)/ Internal external/software from:

- Carrier to terminal – Carrier to Log provider or else – Carrier internal – Carrier institutions (port authorities/ customs...) – Carrier to Vessel – Carrier to carrier –
- Terminal to Carrier – Terminal to Log provider or else – Terminal internal – Terminal institutions (port authorities/ customs) – Terminal to Vessel – Terminal to Terminal –
- Log provider or else to Carrier – Log provider or else to Terminal – Log provider internal – Log provider or else institutions (port authorities/ customs) – L P to LP –
- Vessel to terminal – Vessel to Carrier – Vessel/ ship owner internal – Vessel institutions (port authorities/ customs) – vessel to Vessel –

4/ Registration until 12/02/2019-----Price 14/02/2019