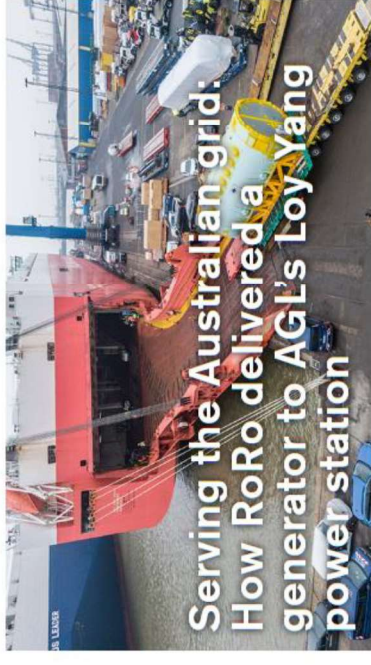
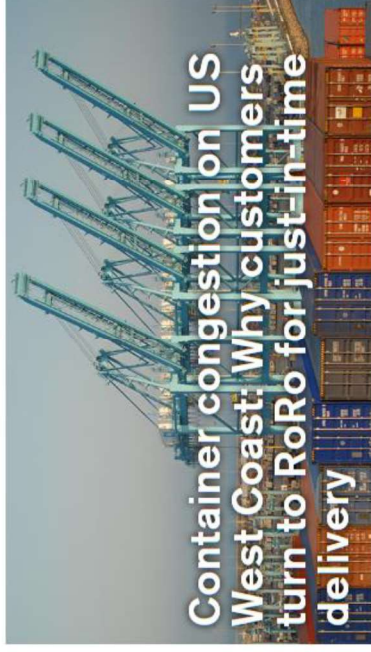
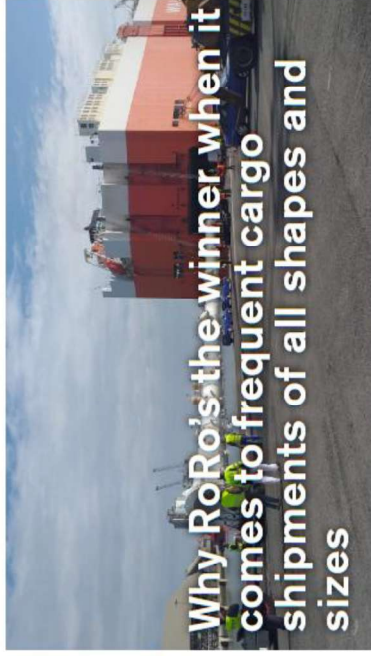


RoRo/ ConRo

RORO



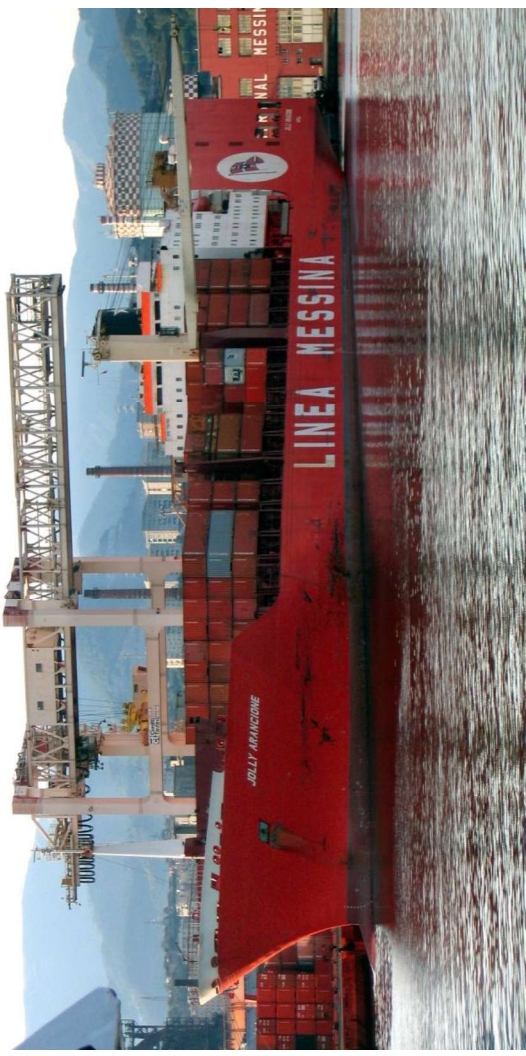
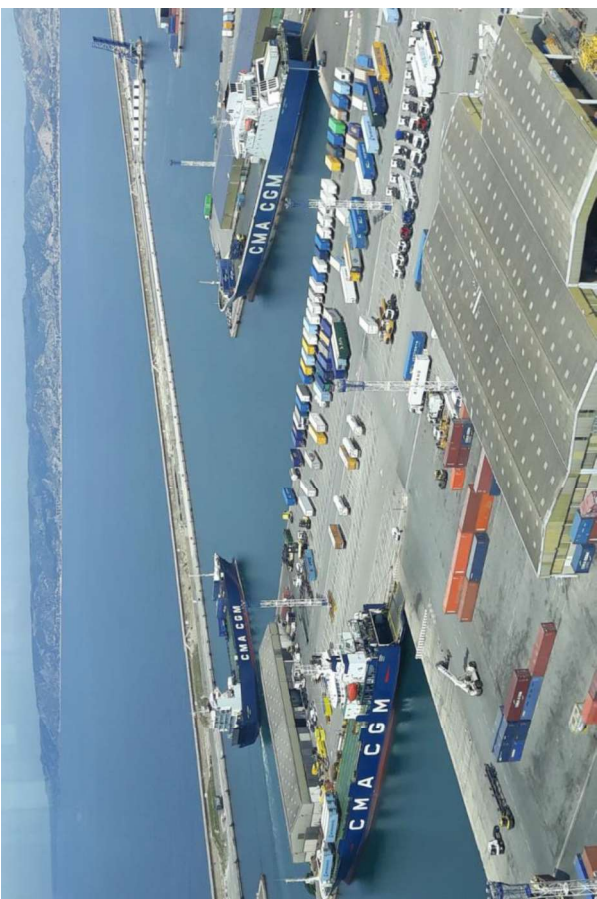
Shipping Message Design Group



CONRO



Shipping Message Design Group



CONRO - RORO

- CONRO companies
 - Grimaldi – 37 vessels – 40, 681 TEU
 - Linea Messina – 11 vessels – 26, 373 TEU
- Main liners with CONRO - RORO
 - CMA CGM
 - MSC
 - NYK

RORO companies WIKI

- A**
- American Roll-on Roll-off Carrier
 - Atlantic Container Line

- B**
- Bahri (company)

- C**
- CSAV

- E**
- Eidsiva Rederi
 - EUKOR
 - Euro Marine Logistics

- F**
- Fesco Transport Group

- G**
- Grimaldi Group

- H**
- Hyundai Glovis

- K**
- K Line
 - K Line European Sea Highway Services

- L**
- Leif Höegh & Co

- M**
- Mediterranean Shipping Company
 - Messina Line
 - Mitsui O.S.K. Lines

- N**
- Nippon Yusen
 - Nissan Motor Car Carrier

O

- OT Africa Line

- P**
- Pasha Hawaii

- S**
- Siem Shipping
 - Stena Line
 - STX Pan Ocean

- T**
- Toyofuji Shipping

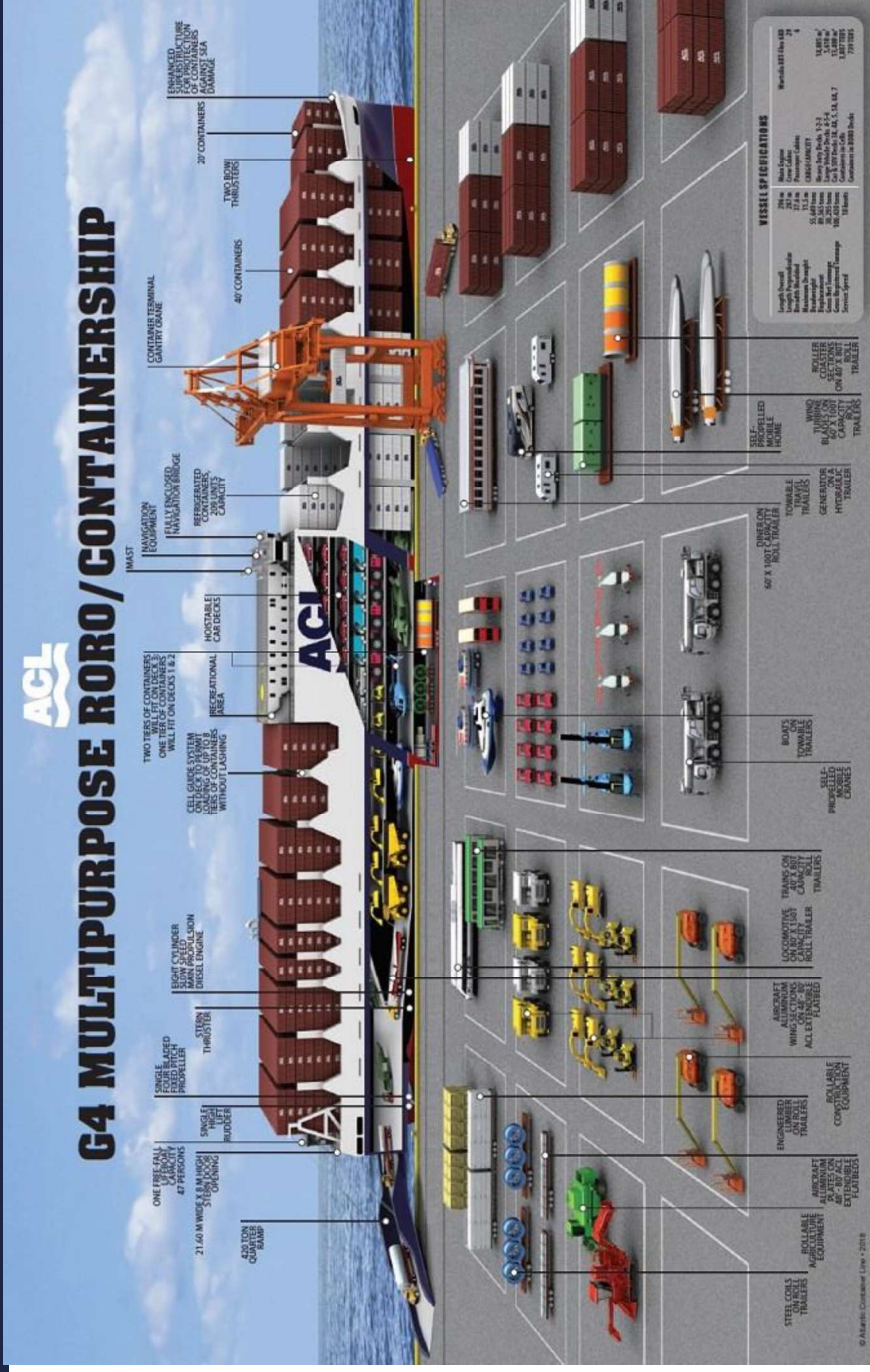
- U**
- United European Car Carriers

- W**
- Wallenius Lines
 - Wallenius Wilhelmsen Logistics
 - Waterman Steamship Corporation
 - Wilh. Wilhelmsen

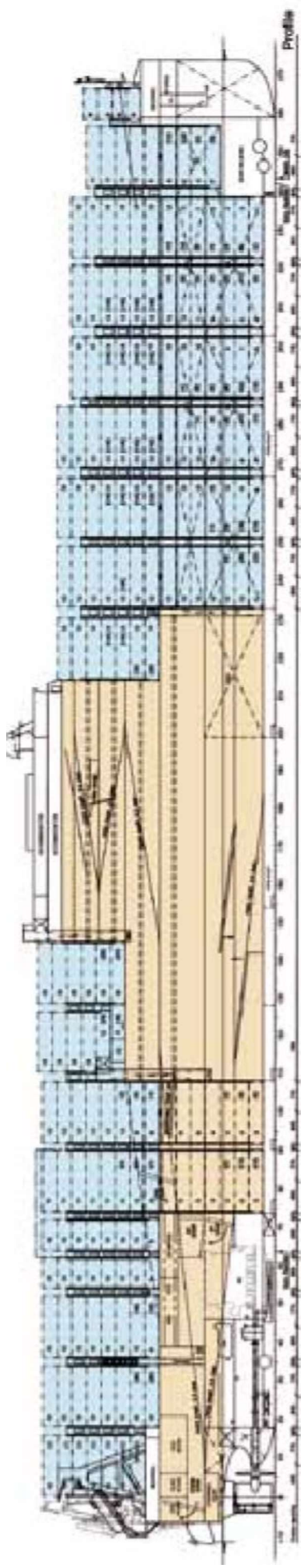
CONRO G4 ACL



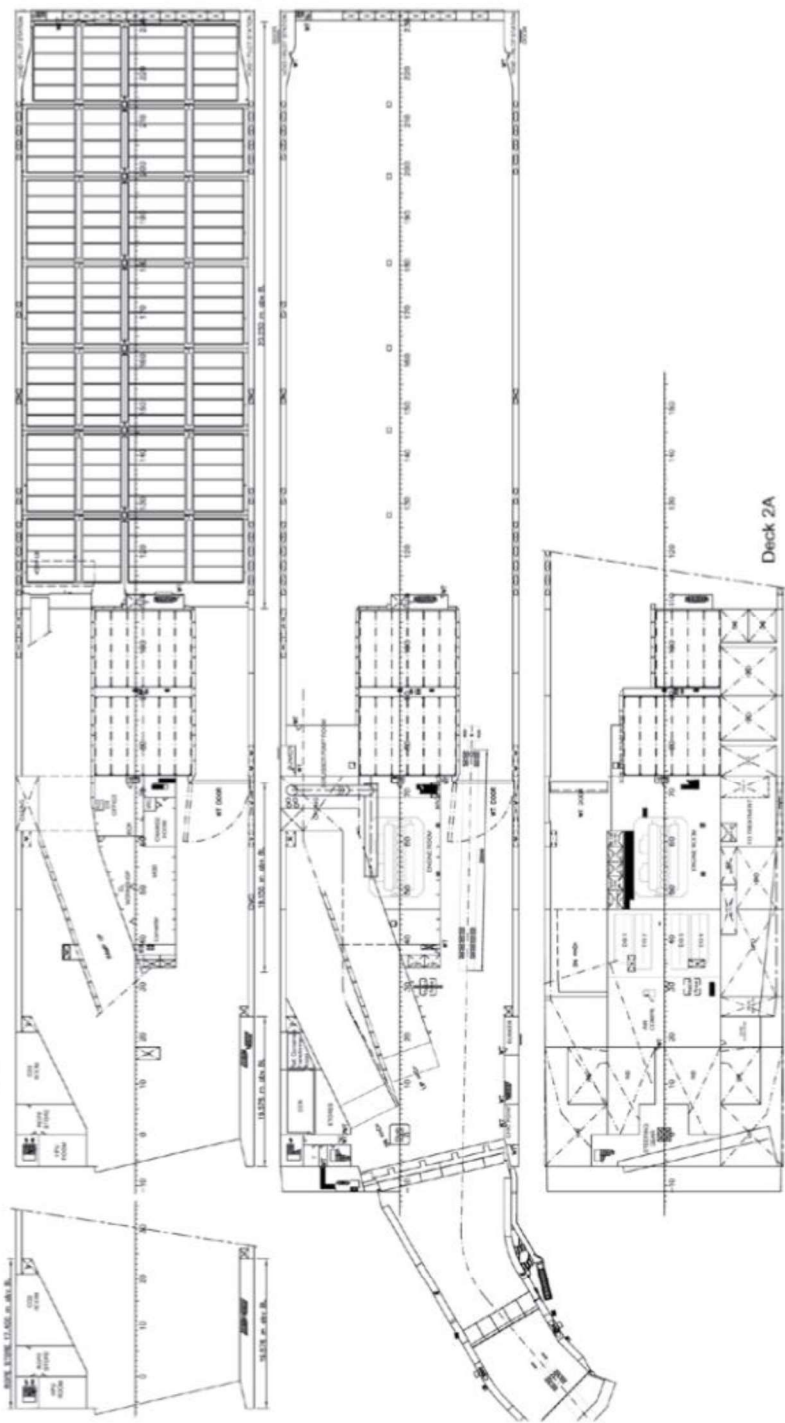
Shipping Message Design Group



CONRO vessel plan



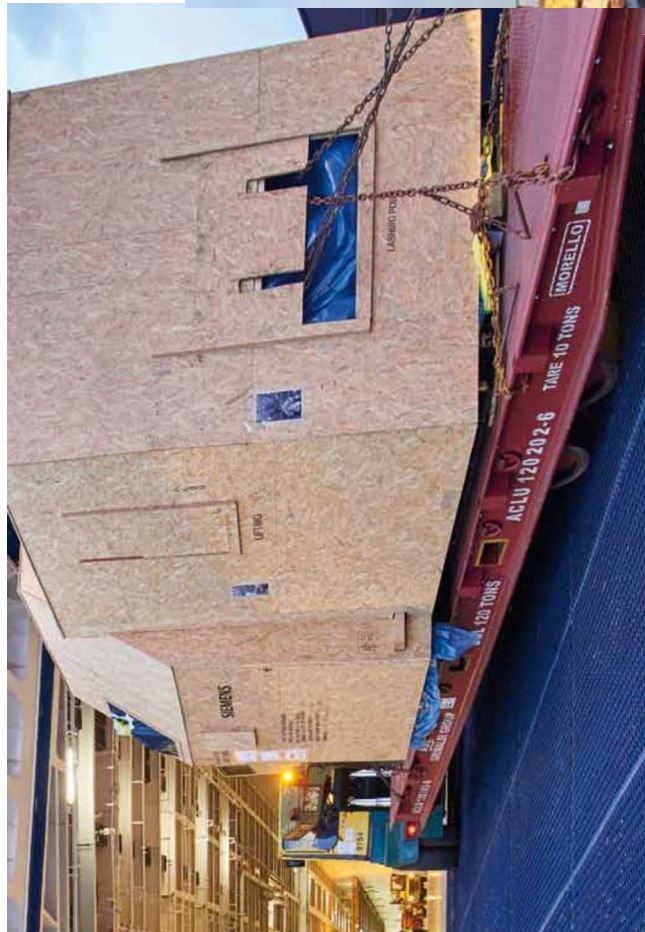
G4 deck 4



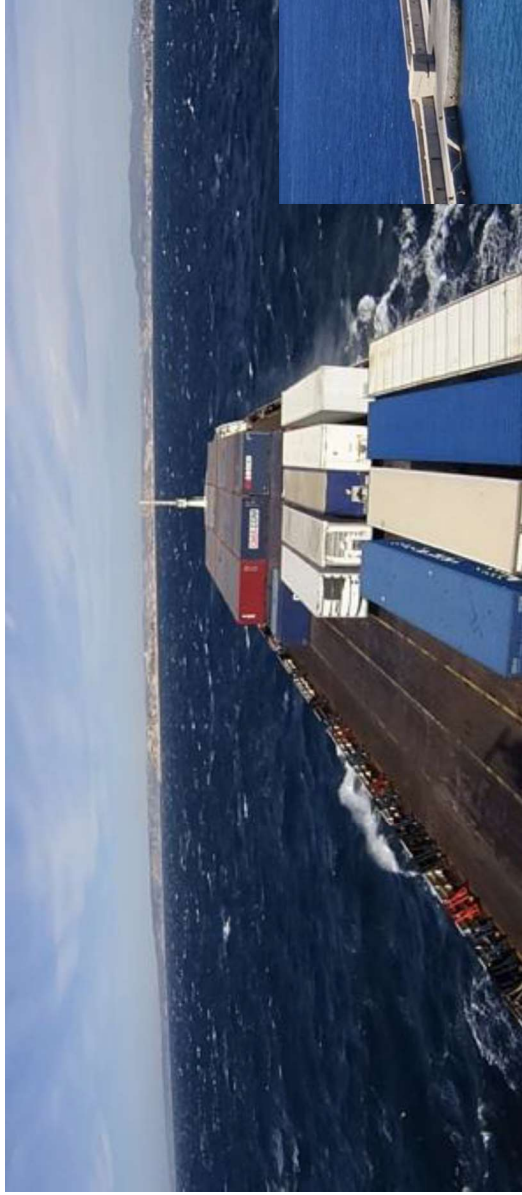
Cars



MAFI



Moving stow position

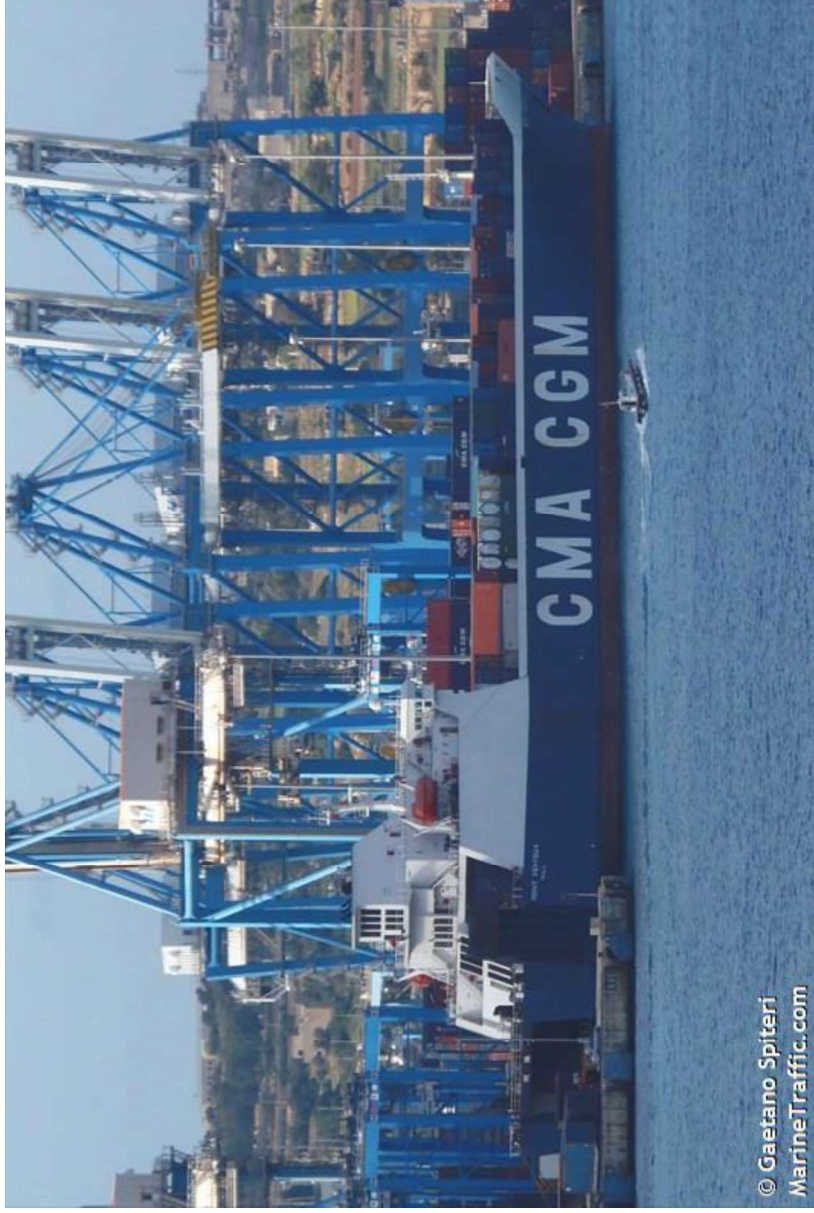


Multiple stow position,

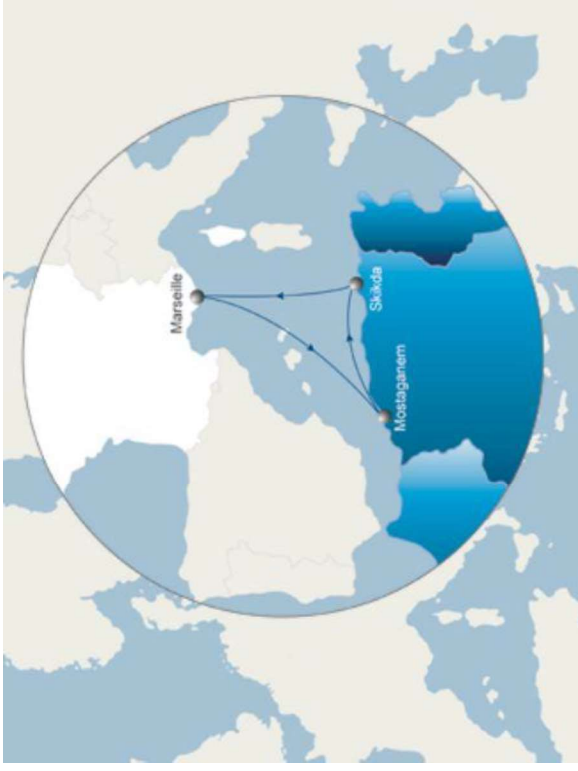
Longitudinal – traditional

Trasversal - Roro – conro
specific

Mont Ventoux long stowage



Rotation



RORO/CONRO

- Problematic:
 - Specificity of RORO, CONRO design and operation
 - Loadlist of BB/uncontainerised
 - Stowage, flexible stow position
 - On board planning
 - Excel reliability
 - On time loading

