

S

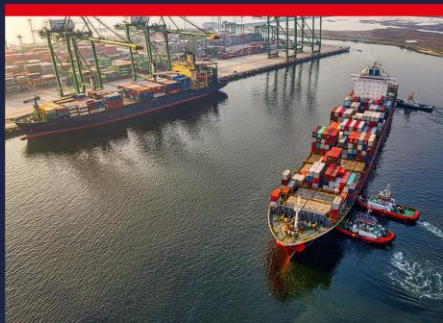
M

D

G

Code Lists: Handling, Stowage, Attribute, Delay Reasons and Port Call Activities


77th SMDG Meeting in Singapore April 2023
Sönke Witt and Michael Schröder




Code List governance



■ Stowage, Handling and Attribute Codeslists are maintained by the SMDG

 Code list **ATTRIBUTES** (version January 2023) lists attributes describing properties and status of transport equipment that is to be observed during the transport of cargo.

 Code list **HANDLING** (version 16. June 2022) lists cargo attributes to be observed during the handling of cargo.

 Code list **STOWINS** (version August 2021) lists attributes of transport equipment and cargo that are to be observed during a vessel's load and discharge operations.

All three code lists are maintained by the SMDG. The lists are published on <https://smdg.org/documents/smdg-code-lists/smdg-handling-and-stoloc-code-lists/>

Requests for a new code or for changes shall be addressed to: coderequest@smdg.org

Attributes/Stowins/Handling - status



■ Operational usages of the SMDG Handling, Stowage, Attribute Code lists

Handling Codes

Create a certain status, instruct to perform actions on a specific transport equipment

Stowage Code

Specific stowing instruction of a certain equipment on a means of transport

Attribute Code

These codes define properties or status of a transport equipment on a specific means of transport.

For some attribute codes an additional stowage instruction might be applied.

Attributes/Stowins/Handling - status



Attribute Code List: Additional entries – on request of the CDC Workgroup Other amendments

Code	Name	Category	Description	last change	valid from	valid until
CBK	Carbon Black	STATUS	Contains Carbon Black	2022-12-16	2022-12-16	
CHA	Charcoal (non-DG)	STATUS	Contains Charcoal	2022-12-16	2022-12-16	
COA	Controlled Atmosphere reefer	PROPERTY	A reefer that allows control of O2, N2, CO2 and air flow volume in addition to the temperature	2022-12-16	2022-12-16	
COB	Cocoa Butter and Cocoa Beans	STATUS	contains cocoa butter or cocoa beans (heat sensitive cargo)	2022-12-16	2022-12-16	
CTN	Raw Cotton	STATUS	Contains Raw Cotton	2022-12-16	2022-12-16	
CTP	Cold treatment probes	STATUS	Treat(ed) with regular cooling according to phytosanitary authority requirement	2022-12-16	2022-12-16	
DMD	Damaged	STATUS	Equipment does not fully comply with the regular specifications. Special restrictions may apply for handling and stowage of equipment.	2022-12-22	2019-02-08	
FSM	Fish Meal (non-DG)	STATUS	Contains Fish Meal	2022-12-16	2022-12-16	
WHD	Wet Hides	STATUS	Contains Wet Hides	2022-12-16	2021-06-25	
HID	Prepared for hides	STATUS	Prepared for hides	2022-12-16	2020-10-15	
HVR	High Value Reefer	STATUS	Examples: Blood Plasma or Pharmaceuticals (value > 500k \$)	2022-12-16	2022-12-16	
LBU	Bundled equipment	STATUS	Multiple pieces of equipment in one stowage position (e.g. flat racks) <i>If container numbers are known, then the segments EQD and EQA are required</i>	2022-12-16	2020-10-15	
LIB	Lithium batteries (non-DG)	STATUS	Contains Lithium batteries (non-DG)	2022-12-16	2022-12-16	
LIO	Lithium Ion batteries (non-DG)	STATUS	Contains Lithium Ion batteries (non-DG)	2022-12-16	2022-12-16	
LTX	Latex	STATUS	Contains Latex	2022-12-16	2022-12-16	
ORF	Operating reefer	STATUS	Operating reefer (temperature t.b.a.)	2022-12-16	2022-12-16	
MAG	Magnet	STATUS	Contains strong magnet	2022-12-16	2022-12-16	
ODO	Strong odour	STATUS	Strong odour commodities	2022-12-16	2014-01-01	
OPD	Open door	STATUS	Code marked for deletion - please use 1DO or 2DO instead (expires end 2023)	2022-12-16	2014-01-01	2023-12-31
RCL	Rubber cup lumps	STATUS	Contains rubber cup lumps	2022-12-16	2022-12-16	
RSW	Reduced stackweight container	PROPERTY	Maximum permissible stackweight to be observed in stowage.	2022-12-16	2022-12-16	
SEE	Seed Meal	STATUS	Contains seed meal	2022-12-16	2022-12-16	
WIN	Wine	STATUS	Contains Wine	2022-12-16	2022-12-16	

Use Case: Stowage of Flexitanks on board: Attributes and Stowinstructions are needed

Attributes

Specific stowing instruction of a certain equipment on a means of transport



Stow instructions

Specific stowing instruction of a certain equipment on a means of transport

Example D.00B:

FTX+ACF++FLX:ATTRIBUTES: 306

HAN+OND:STOWINS:306

■ A bit of history

- Recommendation JM4/272 provides for the use of the FTX segment below EQD in the Container Messages
 - Referred to as JM4 List in the industry
- Decisions taken by the SMDG Codes Subgroup in 2019 (SMDG Plenary #74 in Singapore):

Create three distinctive lists for Handling Instruction, Stowing Instructions and Attributes Codes:

To provide more clarity on how to use a code

Best possibility to distinct between the different purposes of the code

Leave JM4 List as is and not maintain the list any more by SMDG

- Discussion on workability with three lists
 - Proposal: combine all codes into one list and mark codes according to usage as handling, stowage or attribute code

■ Operational usages of the SMDG Delay Reason Codes

Terminal Performance Report TPFREP

In a Terminal Performance Report, the code describes the reason for non-working times at the terminal during vessel operation. The result is extended working time at the terminal.

Vessel Schedule IFTSAI

In a vessel schedule, the code describes the reason why a vessel arrived late or will arrive later than planned at a terminal. The result will be a new ETA/ETB.

Code List governance



■ Delay Reason Codes

EDIFACT Code List Name:		Example for delay code WEA:
DE 1131= DELAY		FTX+ACD++ WEA :DELAY:306+GALE'
<i>Code</i>	<i>Name</i>	<i>Description</i>
1- SHIP related		
ACC	Accident involving personnel	Accident involving personnel, vessel related
DEV	Deviation to avoid bad weather	Deviation to avoid bad weather
EDD	Emergency Dry Docking	Emergency Dry Docking
ENG	Engine repairs	Engine repairs
MVX	Proforma moves exceeded	Proforma moves exceeded
PAU	Vessel detained by port authorities	Vessel detained by port authorities
SPE	Ship - personnel or equipment unavailable	Ship - personnel or equipment not ready or unavailable
STW	Stowage adjustment	Stowage adjustment

■ Port Call Activity Codes

EDIFACT Code List Name:		Example for status code PHIN:
DE 1131= PCACTIVITY		FTX+ACD++ PHIN :PCACTIVITY:306+PhaseIn'
<i>Code</i>	<i>Name</i>	<i>Description</i>
OMIT	Port Omission	Omission of a port call that was contained in the original schedule
PHIN	Phase-in	The vessel joins a Service in this port.
PHOT	Phase-out	The vessel leaves a Service in this port.
DRYD	Drydock	Planned dry docking
ADHO	Adhoc call	A port call is added which was not in the proforma for load/unload operations
ROTCH	Rotation change	The sequence of port calls is changed compared to the proforma

Both code lists are maintained by the SMDG. The lists are published on <https://smdg.org/documents/smdg-code-lists/delay-reason-and-port-call-activity/>

Requests for a new code or for changes shall be addressed to: coderequest@smdg.org

Delay Reason and Port Call Activity Codes



■ Structure of the code lists

Delay reason code list has 4 groups

The Delay reasons mostly describe unplanned, unwanted events

1. Ship related

example ENG – Engine repair

2. Shore related

example YRD Yard congestion

3. Cargo related

example LEK – Leaking container

4. Other

example WEA - Weather

Port Call Activity Code List

In a vessel schedule, the port call activity code describes a planned event which is communicated before vessel arrival. It is often contained already in the Long-Term Schedule for example drydock or phase-out, or planned more short-term such as port omission or bunker call.

Examples:

OMIT- Port omission or DRYD- Dry dock

Delay Reason and Port Call Activity Codes



- **Technical usage of the Code lists**

- The usage of these codes is independent of the technical transmission format!

- EDIFACT

- The codes are used in IFTSAI (both lists) and TPFREP (delay reasons) messages

- API

- The same delay reason and port call activity codes are used for example in the OVS Operational Vessel Schedule API published by the DCSA

- Other usage

- Also the FMC in their draft guidelines for the planned MTDS = Maritime Transportation Data System is making reference to the SMDG Delay Reason Code List



Thank You

Presented by:

Sönke Witt and Michael Schröder

SMDG e.V.

Registered at Amtsgericht Pinneberg, Reg.-ID VR 2142 PI

Board members: Ann-Christin Fröhmkke (co-chair), Sönke Witt (co-chair), Heiko Meyer (treasurer), Jasmin Dröner,

Michael Schröder, Julien Vangeon, Paul Wauters

Mark Lim, Shin Shin Lung, Jost Müller, Robert Roestenburg,