

S

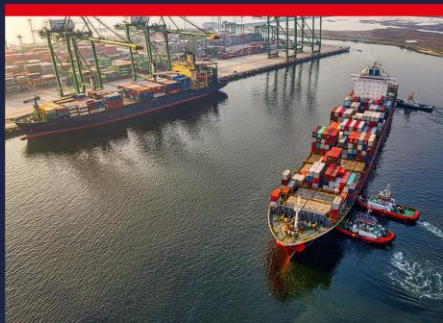
M

D

G

BAPLIE / MOVINS

Jost Müller



# Agenda



- Purpose of EDIFACT messages BAPLIE and MOVINS
- Challenges with message BAPLIE
- Challenges with message MOVINS
- Message versions
- Shortcomings of older versions
  
- Working Group BAPLIE/MOVINS

- **BAPLIE**

Status of the use of stowage locations on board of a vessel

- Arrival
- Departure
- *Used by vessels' on-board instruments for safety calculations*

- **MOVINS**

Instructions for terminal operations during a port call

- Discharge
- Restow
- Loading

# Challenges with message BAPLIE



- Shipping Line
  - Vessel Sharing Agreements (VSA)
  - Pre-Planning by each VSA Shipping Line vs. Vessel Planning by terminal
- VSA-Partner vs. Vessel operator
- Terminal operator
  - Arrival status
  - preliminary Departure status
  - final Departure status
- Vessel safety (Regulation by Classification Society)
  - Used for Control by on-board loading instrument

# Challenges with MOVINS Stowage Instructions



- Shipping Line
  - Ultimate stowage instructions by vessel operating line
  - restows
- Terminal operator
  - Matching with announcements by COPRAR and COPARN
  - Matching with yard planning
    - Arrival by road, train, feeder
    - Departure by road, train, feeder
  - Matching with optimization of operations

# Message Versions of BAPLIE and MOVINS



- Original – early 1990ies:
  - **BAPLIEv2** - EDIFACT Directory D.95B
- Updated 2013 providing for more precise descriptions
  - **BAPLIEv3** - EDIFACT Directory D.13B – split information about stowage position and transport equipment
- Further Updates
  - EDIFACT Directory D.21A – allow for Code Lists Handling Instructions, Stowage Instructions and Attributes
- MOVINSv3 has been adjusted to BAPLIEv3 in D.19B

# Shortcomings of BAPLIEv2 and MOVINSv2



**99999 SGroup5 – Stowage Position**

- M1 LOC – stow. Pos. identification (BBBRRTT)
- C1 GID
- C1 GDS
- C9 FTX – Handling / further information
- M9 MEA – weight
- C9 DIM – dimensions
- C1 TMP – reefer temp.
- C1 RNG – reefer range
- C9 LOC – POL / POD
- M1 RFF – further information

**C3 SGroup6 – Equipment**

- M1 EQD – transport equipment identification
- C9 EQA - attached equipment
- C9 NAD - equipment operation
- C9 RFF – equipment reference

**C999 SGroup7 – Dangerous Goods**

- M1 DGS – Dangerous Goods identification
- C1 FTX – DG additional information

---- Segment group 6 -----		C	99999-----+
<u>LOC</u>	Place/location identification	M	1
<u>ATT</u>	Attribute	C	99
<u>FTX</u>	Free text	C	9
<u>RFF</u>	Reference	C	9
---- Segment group 7 -----		C	9-----+
<u>EQD</u>	Equipment details	M	1
<u>NAD</u>	Name and address	C	9
<u>MEA</u>	Measurements	C	9
<u>HAN</u>	Handling instructions	C	99
<u>ATT</u>	Attribute	C	99
<u>DIM</u>	Dimensions	C	9
<u>RFF</u>	Reference	C	9
<u>GDS</u>	Nature of cargo	C	99
<u>FTX</u>	Free text	C	9
---- Segment group 8 -----		C	9-----+
<u>LOC</u>	Place/location identification	M	1
<u>TSR</u>	Transport service requirements	C	1
<u>TDI</u>	Transport information	C	1-----+
---- Segment group 9 -----		C	9-----+
<u>TMP</u>	Temperature	M	1
<u>RNG</u>	Range details	C	1
<u>DTM</u>	Date/time/period	C	1-----+
---- Segment group 10 -----		C	9-----+
<u>EQA</u>	Attached equipment	M	1
<u>NAD</u>	Name and address	C	1-----+
---- Segment group 11 -----		C	999-----+
<u>DGS</u>	Dangerous goods	M	1
<u>ATT</u>	Attribute	C	9
<u>MEA</u>	Measurements	C	9
<u>FTX</u>	Free text	C	9
---- Segment group 12 -----		C	9-----+
<u>CTA</u>	Contact information	M	1
<u>COM</u>	Communication contact	C	9-----++
<u>CNT</u>	Control total	M	1-----+

Stowage Location

Equipment identification  
Equipment operator  
Weight  
Handling and attributes

POL, POD, on-transport

Reefer details

IMDG details

# Advantages of Versions 3



- BAPLIE 3.2 MIG gives extensive description on how to use message features
- Clear definition of data meets process automation and new regulations
  - SMDG maintained code lists facilitate even latest requirements in maritime transport
  - Code lists HANDLING, STOWINS, ATTRIBUTES
- Avoid misunderstandings and extra communication
- Systems controlling terminal operations directly fed by messages



# MOVINSv3



- More detailed specifications allow for computer-controlled business processes on terminal
- Freedom for terminal operator to optimize operations
- ...

# Working Group BAPLIE/MOVINS (1)



- No WG meetings in past years
- Questions have been answered by chair Jost Müller  
send questions/comments to [secretariat@smdg.org](mailto:secretariat@smdg.org) or [info@smdg.org](mailto:info@smdg.org)
- Recently published MIGs
  - BAPLIE v2.2.1 (2016)
  - BAPLIE v3.1.1 (2016)

# Working Group BAPLIE/MOVINS (2)



- BAPLIE and MOVINS have been continuously updated in EDIFACT directory
  - latest update of BAPLIE and MOVINS in D.21A (added ATT segments)
  - D.19A – adjust MOVINS structure with BAPLIE3 → MOVINS version 3
- **Open issues** – MIGs to be published
  - MIG BAPLIE v3.3 (D.21A)
  - MIG MOVINS v3 (D.21A)
- **Intentions by members for changing to versions 3?**  
**Any new requests for improvements from Shipping Lines or Terminals?**  
**→ Worth to continue working group BAPLIE / MOVINS?**

# Working Group Members



- Jost Müller (Chair)
- ...



# Thank You

C 2023 SMDG e.V.

SMDG e.V. -- Registered at Amtsgericht Pinneberg, Reg.-ID VR 2142 PI

Board members:

Ann-Christin Fröhmcke (co-chair), Sönke Witt (co-chair), Heiko Meyer (treasurer), Jasmin Dröner, Mark Lim, Shin Shin Lung, Jost Müller, Robèrt Roestenburg, Michael Schröder, Julien Vangeon, Paul Wauters