

S

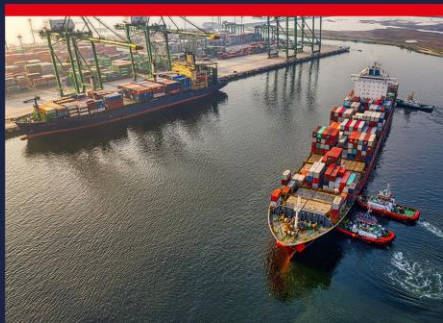
M

D

G

Empty Tank Containers with Residues SMDG Recommendation # 8

Jost Müller



Agenda



- Definition of the problem
- Solution: Transmit attribute code and mark equipment as empty
- Examples

Empty tank container with residue(s)



Definition

- An “Empty tank container with residue” is defined as a tank container without cargo inside. However, the tank may contain still residues from its previous cargo transport
 - It is considered as **empty** from an operational perspective by the carrier, terminals, and customer. It will not be shown on a cargo manifest.
 - However, the container still contains **residues from its previous cargo transport**. This cargo remainder might have a **Dangerous Goods property**.
 - → The container must be declared and reported as DG-container. Carrier, terminals, and authorities must apply the same IMDG rules as for a DG-container with cargo.

The Issue



For many actors in the supply chain there is no clear assignment of such container as “Full” or “Empty”.

- Depending on a particular use case, it could be considered as “Empty” because there is no cargo inside

or

- It could be considered as “Full” because it has a DG property. Some IT systems automatically classify a container as “Full” when it has a DG property.

As a result, the electronic communication of an “MT tank container with residue” is often misunderstood by the receiver, resulting in disarrangement and uneconomic extra email exchange.

Recommended solution



The SMDG has introduced a **Status Attribute Code** “**ETR**” for “Empty Tank with Residue”.

Carrier, terminals, and customers may use it for declaration in all related EDIFACT messages.

Where the transport equipment is to be specified as full or empty (typically in an EQD-segment), **empty tanks with residue(s) should always be marked as “empty”**.

EDIFACT



EQD segment:

EQD+CN+ABCU1234567+22T3+++4'

(4 means empty)

The attribute code **ETR**:

FTX+ACF++**ETR**:ATTRIBUTES:306'

(D.00B or later)

FTX+ACF++**ETR**:ATT:306'

(before D.00B)

DGS declaration:

DGS+IMD+8+2735'

FTX+AAD+++2 METHYLPENTAMETHYLENEDIAMINE'

Example in COPRAR 2.1.3 (D.00B)



Segment Group 6:

EQD+CN+ABCU1234567+22T3+++4'

(empty transport equipment)

...

(segments like RFF, LOC, MEA, ...)

FTX+ACF¹++ETR:ATTRIBUTES:306'

(FTX describing attribute ETR)

Segment Group 8:

DGS+IMD+8+2735'

(DG-class)

FTX+AAD+++2 METHYLPENTAMMETHYLENEDIAMINE'

(DG-substance)

...

(segments/groups like HAN, SG10, NAD, ...)

¹) In case qualifier ACF is used for specification of a coded “construction material” in DE 4441, the qualifier ABS may be used for distinction.

Example in COPRAR 1.6.2 (D.95B)



Segment Group 3:

EQD+CN+ABCU1234567+22T3+++4'

(empty transport equipment)

...

(segments like RFF, LOC, MEA, ...)

FTX+ACF¹++ETR:ATTRIBUTES:306'

(FTX describing attribute ETR)

DGS+IMD+8+2735'

(DGS describing DG-class,

no FTX describing DG substance allowed)

...

(segments/groups like EQD, SG4, ...)

Example in BAPLIE 3.2 (D.21B)



Segment Group 7 (transport equipment):

EQD+CN+ABCU1234567+22T3+++4' (empty transport equipment)
... (more segments like RFF, LOC, MEA, ...)
ATT+27+PROPERTY:EQDATT:306+ETR:ATTRIBUTES:306' (ATT describing attribute ETR)
...

Segment Group 11 (Dangerous Goods):

DGS+IMD+8+2735' (DG-class)
ATT+26+PSN:DGATT:306+:PSN::AMINES,LIQUID,CORROSIVE,N.O.S.' (DG-PSN)
ATT+26+TNM:DGATT:306+:TNM::2 METHYLPENTAMMETHYLENEDIAMINE'
... (DG-tech. name)
... (more segments/groups like MEA, FTX, SG12)

Example in BAPLIE 2.2 (D.95B)



Segment Group 2:

LOC+147+0020072'

(stowage location)

FTX+ACF++**ETR**:ATTRIBUTES:306'

(FTX describing attribute ETR)

...

(more segments like MEA, DIM, TMP, LOC, RFF)

Segment Group 3:

EQD+CN+ABCU1234567+22T3+++**4**'

(empty transport equipment)

Segment Group 4:

DGS+IMD+8+2735'

(DGS describing DG-class)

FTX+AAD+++2 METHYLPENTAMMETHYLENEDIAMINE'

(DG substance)



Thank You

SMDG e.V.

SMDG e.V. - Registered at Amtsgericht Pinneberg, Reg.-ID VR 2142 PI
Address: Seegrabenweg 52d, 25469 Halstenbek, Germany