

S

M

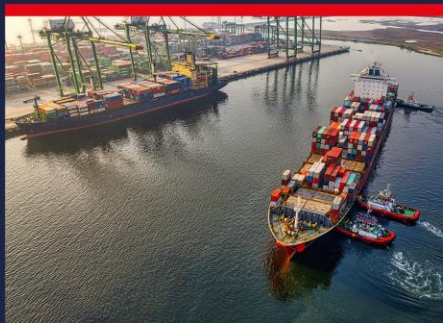
D

G

BAPLIE / MOVINS

Jost Müller

SMDG#78 Antwerp, 22-26 April 2024



Agenda



1. Why using BAPLIE Version 3
2. Latest BAPLIE – 8th revision - Directory D.19A
3. MOVINS

- ***Enhancements compared to BAPLIEv2 (D.95B)***

- Improved message structure distinct Stowage Pos. and Equipment
- Dangerous goods descriptions with more details
- Non-standard equipment
- Empty flat racks, bundles
- Breakbulk
- Accounting details: slot sharing between partner lines, lost slots
- Data for safety validation (weight limits, mass distribution, DG stowage and segregation)

- ***Extended usage compared to BAPLIEv2 (D.95B)***
 - More than final status after departure of vessel, but also
 - Draft status as it describes current planning
 - Full information describing all occupied or blocked stowage locations
 - Partial information, describing only stowage locations
 - related to a *single shipping line*
 - whose content changed in the port (transit cargo omitted)

Additions in latest revision (D.21A)



Add ATT segment in Stowage Location Group

- Transmission of Stowage Location ATTRIBUTE codes in appropriate segment
(no longer “misuse” FTX segment)

Add ATT segment in Transport Equipment Group

- Transmission of Container ATTRIBUTE codes in appropriate segment
(no longer “misuse” FTX segment)

Additions in latest revision in message structure



<u>00200</u>	----	Segment group 6	-----	C	99999	-----	+
<u>00210</u>	<u>LOC</u>	Place/location	identification			M	1
<u>00220</u>	+ <u>ATT</u>	Attribute				C	99
<u>00230</u>	<u>FTX</u>	Free text				C	9
<u>00240</u>	<u>RFF</u>	Reference				C	9
<u>00250</u>	----	Segment group 7	-----	C	9	-----	+
<u>00260</u>	<u>EQD</u>	Equipment details				M	1
<u>00270</u>	<u>NAD</u>	Name and address				C	9
<u>00280</u>	<u>MEA</u>	Measurements				C	9
<u>00290</u>	<u>HAN</u>	Handling instructions				C	99
<u>00300</u>	+ <u>ATT</u>	Attribute				C	99
<u>00310</u>	<u>DIM</u>	Dimensions				C	9
<u>00320</u>	<u>RFF</u>	Reference				C	9
<u>00330</u>	<u>GDS</u>	Nature of cargo				C	99
<u>00340</u>	<u>FTX</u>	Free text				C	9

.....

ATT - Segment



ATT ATTRIBUTE

Function: To identify a specific attribute.

010	9017 ATTRIBUTE FUNCTION CODE QUALIFIER	M	1	an..3	←	27 – Transport Equipment 28 – Stowage Location
020	C955 ATTRIBUTE TYPE	C	1			
	9021 Attribute type description code	C		an..17	←	<code>
	1131 Code list identification code	C		an..17	←	ATTRIBUTES
	3055 Code list responsible agency code	C		an..3	←	306
	9020 Attribute type description	C		an..70		
030	C956 ATTRIBUTE DETAIL	C	5			
	9019 Attribute description code	C		an..17		
	1131 Code list identification code	C		an..17		
	3055 Code list responsible agency code	C		an..3		
	9018 Attribute description	C		an..256		

MOVINS



while BAPLIE is a **status** message

MOVINS is an **instruction** message

MOVINS Version 3 uses same structure as BAPLIE Version 3

Working Group BAPLIE/MOVINS



Any Questions to BAPLIE or MOVINS
(Versions 2 still supported)

Request of Membership – Agenda: new version 3 MIGs

Mail to: **secretariat@smdg.org**



Thank You

Presented by: Presenters Name/Company here

SMDG e.V.

Registered at Amtsgericht Pinneberg, Reg.-ID VR 2142 PI

Board members: Ann-Christin Fröhmcke (co-chair), Sönke Witt (co-chair), Heiko Meyer (treasurer), Thor Baunsgaard, Jasmin Dröner, Alex Hartnoll, Mark Lim, Shin Shin Lung, Jost Müller, Robèrt Roestenburg, Michael Schröder, Dirk Van de Velde, Julien Vangeon, Paul Wauters

www.smdg.org