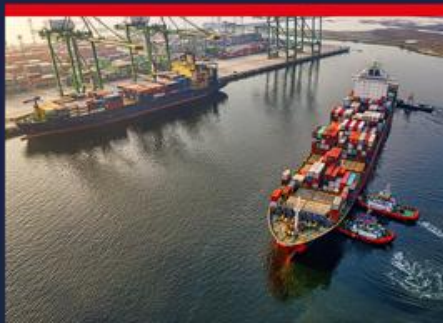




SMDG Terminal Code List (TCL)

Mark Lim

SMDG Summer Event Hamburg, 16-17 July 2025



Introduction



- Why SMDG Terminal Codes

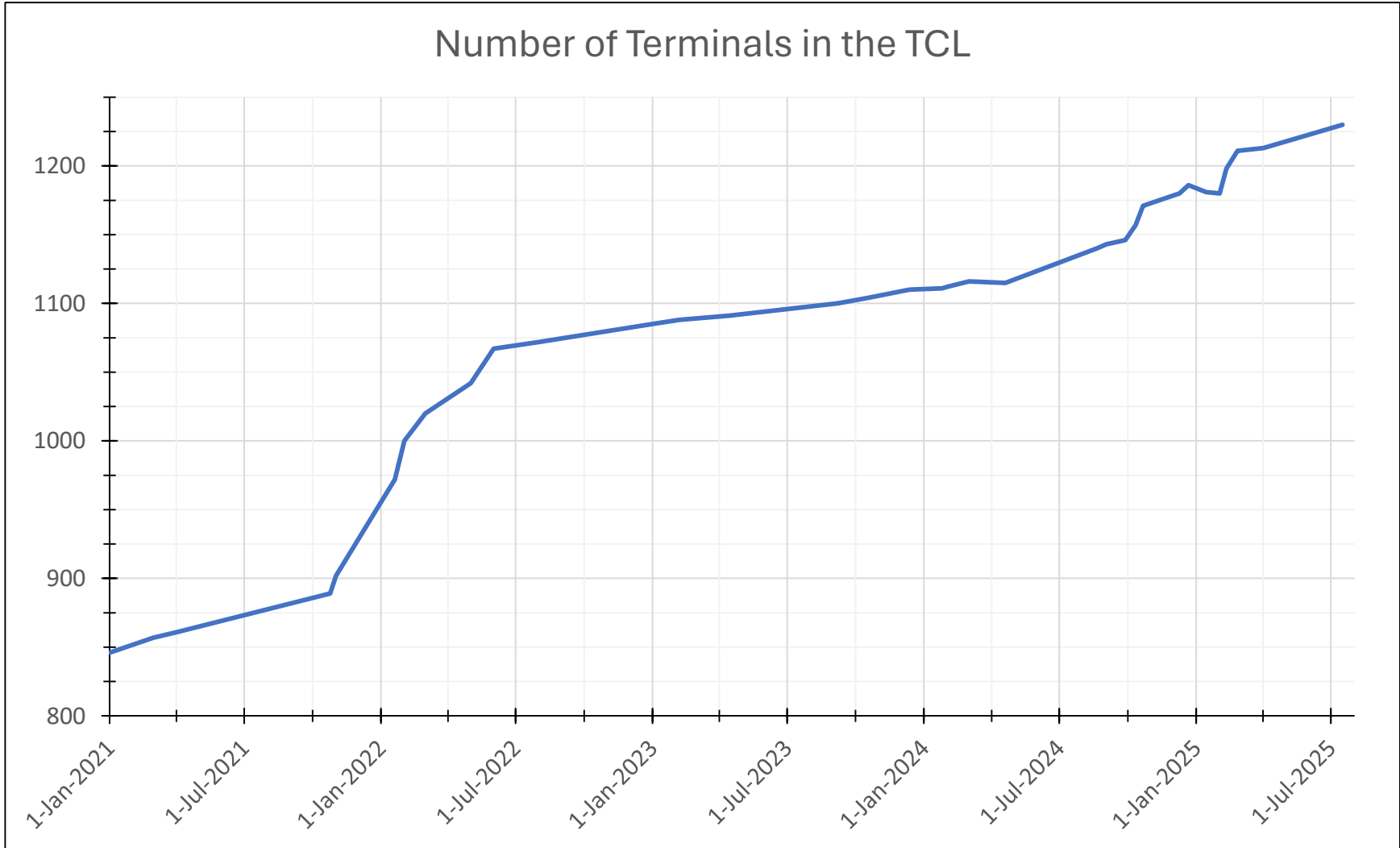
- The port UN/LOCODE on its own only identifies the port, but not the terminals in the port
- The SMDG is officially endorsed by UN/CEFACT as Child Code List Agency
- SMDG Terminal Codes are child codes of the UN/LOCODE
- Used by various players in the maritime industry (carriers, terminals, etc.)
- Used e.g. in the DCSA OVS (Operational Vessel Schedule) API
- Suitable for various electronic formats and technologies (EDIFACT, ANSI X.12, XML, API, ...)

Introduction



- Scope of the SMDG Terminal Code List (TCL)
 - Contains codes for **container handling terminals** that are called by **seagoing cargo vessels**
 - Does not cover inland terminals and depots (these are handled by BIC, which is also a child code agency of UN/CEFACT)
 - River terminals may be included on a case-by-case basis

Introduction



16 July 2025:
1230 terminals
723 ports
162 countries

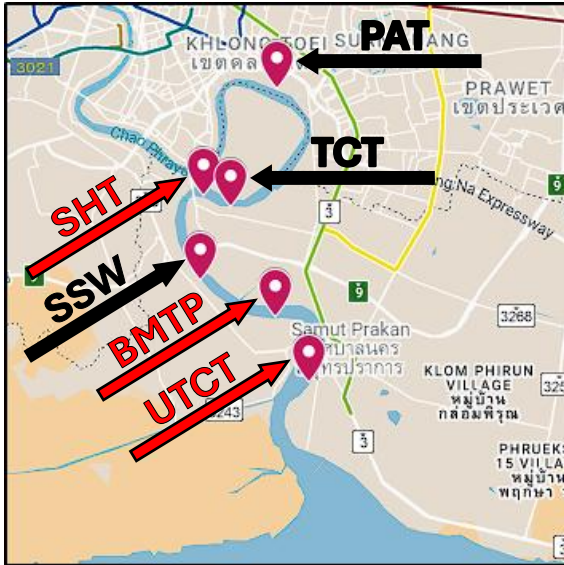
Introduction



- View on Google Maps, [click here to view the map](#)



Terminal Codes in EDIFACT messages



- Example: Bangkok (THBKK) with 6 terminals in the metropole region (3 with an alternative UN/LOCODE, red arrows)
- Problem: The port UN/LOCODE on its own only identifies the port, but not the terminal
- Solution: Use UN/LOCODE with SMDG Terminal Code
- Useful in BAPLIE (bayplan); COPARN, COPRAR, CODECO, COARRI (container messages); IFTSAI (vessel schedule); MOVINS (stowage instructions); ...

SMDG		SMDG Terminal Code List (TCL)				
		v20250401				
www.smdg.org		Click here to view the SMDG Terminal Facilities on Google Maps				
		To view a specific terminal: Click on the corresponding latitude cell for Google Maps, on the longitude cell for the Geofence map				
UNLOCODE	Alternative UNLOCODE	Terminal Code	Terminal Facility Name	Terminal Company Name	Latitude (DMS)	Longitude (DMS)
THBKK	THBMT	BMT	BANGKOK MODERN TERMINAL (BMT)	BMT PACIFIC LTD.	N 13°36'29"	E 100°34'29"
THBKK		PAT	BANGKOK PORT, KHLONG TOEI (PAT)	PORT AUTHORITY OF THAILAND	N 13°42'13"	E 100°34'33"
THBKK	THSCS	SHT	SAHATHAI TERMINAL	SAHAHATHAI TERMINAL PUBLIC COMPANY LTD	N 13°39'30"	E 100°32'38"
THBKK		SSW	SUKSAWAT TERMINAL	SUKSAWAT TERMINAL CO., LTD.	N 13°37'24"	E 100°32'33"
THBKK		TCT	THAI CONNECTIVITY TERMINAL (TCT)	THAI CONNECTIVITY TERMINAL CO., LTD.	N 13°39'14"	E 100°33'21"
THBKK	THUCT	UTCT	UNITHAI CONTAINER TERMINAL (UTCT)	UNITED THAI SHIPPING CORP. LTD.	N 13°34'49"	E 100°35'21"

Terminal Codes in EDIFACT messages



- SMDG Terminal Codes are typically used in LOC segments
- Port of discharge (**LOC+11**) in Bangkok (**THBKK**) at Bangkok Modern Terminal (**BMTP**)

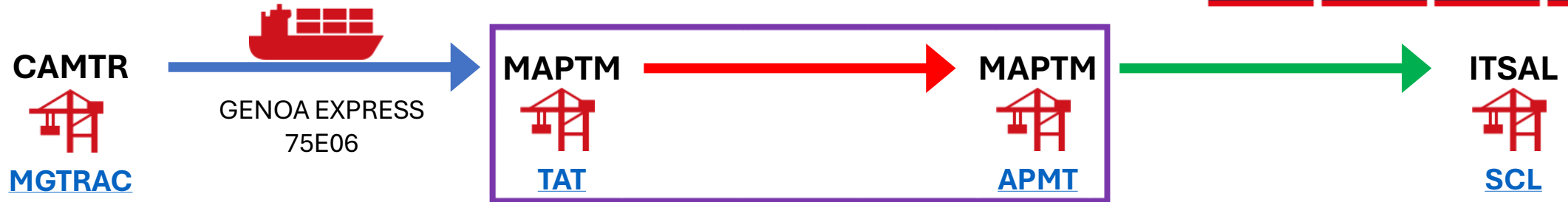
LOC+11+**THBKK**+**BMTP**:**TER**:**306** ' (D.95B)

LOC+11+**THBKK**+**BMTP**:**TERMINALS**:**306** ' (D.00B and later)

- Element **C517.3225** contains the port **UN/LOCODE**
- Element **C519.3223** contains the **Terminal Code**
- Code **306** in element **C519.3055** stands for **SMDG**
- The usage of SMDG-related codes in elements **1131** and **3055** is explained in [SMDG Recommendation #07](#) (*always use codes from the latest published version of a code list*)

LOC PLACE/LOCATION IDENTIFICATION				
Function: To identify a place or a location and/or related locations.				
010	3227	LOCATION FUNCTION CODE QUALIFIER	M	1 an..3
020	C517	LOCATION IDENTIFICATION	C	1
	3225	Location name code	C	an..25
	1131	Code list identification code	C	an..17
	3055	Code list responsible agency code	C	an..3
	3224	Location name	C	an..256
030	C519	RELATED LOCATION ONE IDENTIFICATION	C	1
	3223	First related location name code	C	an..25
	1131	Code list identification code	C	an..17
	3055	Code list responsible agency code	C	an..3
	3222	First related location name	C	an..70
040	C553	RELATED LOCATION TWO IDENTIFICATION	C	1
	3233	Second related location name code	C	an..25
	1131	Code list identification code	C	an..17
	3055	Code list responsible agency code	C	an..3
	3232	Second related location name	C	an..70
050	5479	RELATION CODE	C	1 an..3

IFTSAI (vessel schedule) example

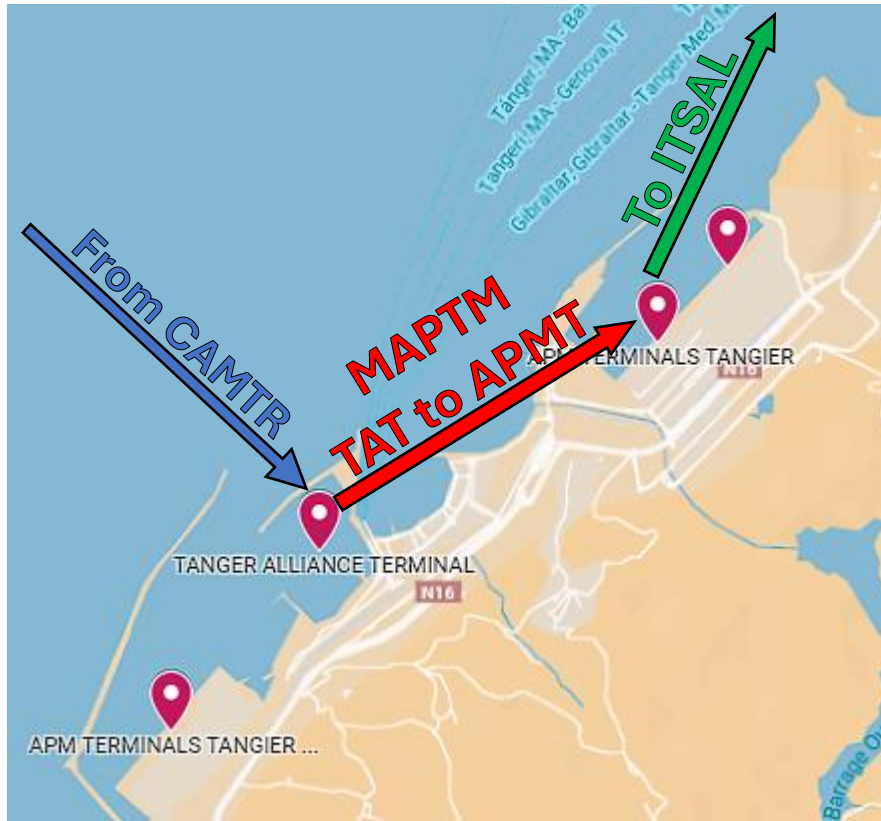


- Vessel calls 2 terminals in Tanger Med (MAPTM)
- The UN/LOCODE by itself is not sufficient to distinguish them
- Assigning UN/LOCODEs to terminals violates UN/ECE Recommendation 16
- Solution: Use the UN/LOCODE in conjunction with the SMDG Terminal Code

SMDG		SMDG Terminal Code List (TCL)				
		v20250401				
www.smdg.org		Click here to view the SMDG Terminal Facilities on Google Maps				
To view a specific terminal: Click on the corresponding latitude cell for Google Maps, on the longitude cell for the Geofence map						
UNLOCODE	Alternative UNLOCODE	Terminal Code	Terminal Facility Name	Terminal Company Name	Latitude (DMS)	Longitude (DMS)
CAMTR		MGTRAC	RACINE TERMINAL (SECTION 62)	MONTREAL GATEWAY TERMINALS	N 45°33'57"	W 073°31'07"
ITSAL		SCT	SALERNO CONTAINER TERMINAL	SALERNO CONTAINER TERMINAL	N 40°40'27"	E 014°44'31"
MAPTM		APMT	APM TERMINALS TANGIER	APM TERMINALS TANGIER	N 35°53'24"	W 005°29'48"
MAPTM		TAT	TANGER ALLIANCE TERMINAL	TANGER ALLIANCE (MARSA MAROC, EUROGATE)	N 35°52'32"	W 005°31'32"

IFTSAI (vessel schedule) example

S M D G



```

UNB+UNOA:2+HLC+INTTRA+250331:0100+321846'
UNH+1+IFTSAI:D:00B:UN:SMDG20'
BGM+404:::VESSEL SCHEDULE+010589+9'
DTM+137:202503310100:203'
TDT+20+75E06+1+++HLC:LINE:306+++9626041:146:11:GENOA EXPRESS:LR'
FTX+AAI++MCA+MEDITERRANEAN CANADA SERVICE'
LOC+9+CAMTR:::MONTREAL+MGTRAC:TERMINALS:306:RACINE TERM (S.62)'
DTM+133:202504020300:203'
LOC+11+MAPTM:::TANGER MED+TAT:TERMINALS:306:TANGER ALLIANCE TERM'
DTM+132:202504160700:203'
LOC+11+MAPTM:::TANGER MED+APMT:TERMINALS:306:APMT TANGIER'
DTM+132:202504171900:203'
LOC+11+ITSAL:::SALERNO+SCT:TERMINALS:306:SALERNO CONTAINER TERM'
DTM+132:202504200900:203'
UNT+14+1'
UNZ+1+321846'
  
```

Terminal Codes and UN/LOCODEs



- Use of UN/LOCODE clarified in [UN/ECE Recommendation 16](#) (Rev. 4, 2020 ed.)
 - UN/LOCODEs are assigned to administrative or economic areas (cities, towns, etc.)

“UN/LOCODE identifies an administrative or economic area, relevant to international trade and transport, as defined by the competent national authority in each country. These areas are understood in the sense of a city, a town, etc.”
 - UN/LOCODEs should not be assigned to container terminals (function of a location)

“A location with several functions should only have one UN/LOCODE code assigned. Any subset of a location such as airports, rail stations or container terminals should be identified with the appropriate function; a separate UN/LOCODE should not be assigned”
 - SMDG Terminal Codes are UN/LOCODE child codes

“Facilities which deliver services in a location identified with a UN/LOCODE can be identified by a code different from the UN/LOCODE, which is considered as a child code of the UN/LOCODE.”

Terminal Codes and UN/LOCODEs



- Only UN/LOCODEs that are ports (function 1) may be used in the TCL

United Nations
Code for Trade and Transport Locations (UN/LOCODE)

(CN) CHINA

Ch	LOCODE	Name	NameWoDiacritics	SubDiv	Function	Status	Date
	CN SGH	Shanghai	Shanghai	SH	12345---	AS	1401
	CN SHA	Shanghai Hongqiao International Apt	Shanghai Hongqiao International Apt	SH	---4---	AS	1601
	CN SHG	Shanghai Pt	Shanghai Pt	SH	1-----	AS	1601
	CN PVG	Shanghai Pudong International Apt	Shanghai Pudong International Apt	SH	---4---	AS	1401
	CN SHZ	Shanghai Railway Station	Shanghai Railway Station	SH	-23----	AS	1601

1.6 Column "Function"

This column contains a 8-digit function classifier code for the location, where:

0	A value "0" in the first position specifies that the functional use of a location is not known and is to be specified.
1	Specifies that the location is a Port, as defined in UN/ECE Recommendation 16.
2	Specifies that the location is a Rail terminal.
3	Specifies that the location is a Road terminal.
4	Specifies that the location is an Airport.
5	Specifies that the location is a Postal exchange office.
6	Value reserved for multimodal functions, ICDs etc.
7	Value reserved for fixed transport functions (e.g. oil platform).
B	Specifies that the location is Border crossing.

Terminal Codes and UN/LOCODEs



- Example: both LOC+11 refer to the same terminal Shanghai East Cont. Term.

LOC+11+CNSGH+SECT:TERMINALS:306' (main/primary)

LOC+11+CNSHG+SECT:TERMINALS:306' (secondary/alternative)

SMDG				SMDG Terminal Code List (TCL)		
				v20250401		
www.smdg.org		Click here to view the SMDG Terminal Facilities on Google Maps				
To view a specific terminal: Click on the corresponding latitude cell for Google Maps, on the longitude cell for the Geofence map						
UNLOCODE	Alternative UNLOCODE	Terminal Code	Terminal Facility Name	Terminal Company Name	Latitude (DMS)	Longitude (DMS)
CNSGH	CNSHG	SECT	SHANGHAI EAST CONTAINER TERMINAL	SHANGHAI EAST CONTAINER TERMINALS CO., LTD.	N 31°20'21"	E 121°39'02"
CNSGH	CNSHG	SGICT	SHANGHAI GUANDONG INTERNATIONAL CONTAINER TERMINAL	SHANGHAI GUANDONG INTERNATIONAL CONTAINER	N 30°36'48"	E 122°04'30"
CNSGH	CNSHG	SMCT	SHANGHAI MINGDONG CONTAINER TERMINAL	SHANGHAI MINGDONG CONTAINER TERMINALS CO.,	N 31°19'48"	E 121°40'07"
CNSGH	CNSHG	SPICT	SHANGHAI PUDONG INTERNATIONAL CONTAINER TERMINAL	SHANGHAI PUDONG INTERNATIONAL CONTAINER	N 31°22'06"	E 121°35'35"
CNSGH	CNSHG	SHENG	SHANGHAI SHENGDONG INTERNATIONAL CONTAINER TERMINAL	SHANGHAI SHENGDONG INTERNATIONAL CONTAINER	N 30°37'57"	E 122°02'52"
CNSGH	CNSHG	SIPGSD	SIPG SHANGDONG CONTAINER TERMINAL	SHANGHAI INTERNATIONAL PORT (GROUP) CO., LTD.	N 30°39'10"	E 122°01'28"
CNSGH	CNSHG	WAIG	SIPG ZHENDONG CONTAINER TERMINAL	SHANGHAI INTERNATIONAL PORT (GROUP) CO., LTD.	N 31°22'30"	E 121°34'46"

Alternative UN/LOCODEs



- A second, alternative UN/LOCODE may be assigned when
 1. A UN/LOCODE exists for the city and another for the port
Example Shanghai: CNSGH for the city and alternative code CNSHG for the port.
 2. A terminal is located in a small town, located close to a metropolis
Example New York: USNYC for the metropolis and alternative codes USEWR and USUYU for the small towns
 3. A UN/LOCODE exists for the city and another for the terminal (terminal-specific UN/LOCODE)
Example Bangkok: THBKK for the city/metropole and alt. codes THBMT (Bangkok Modern Terminals), THSCS (Sathai Coastal Seaport) and THUCT (Unithai Container Terminal) for the terminals

New terminal-specific UN/LOCODEs are no longer approved (UN/ECE Recommendation 16)

Avoid terminal-specific UN/LOCODEs in the SMDG TCL
- Recommendation: Always use the primary UN/LOCODE

Obtaining the latest TCL

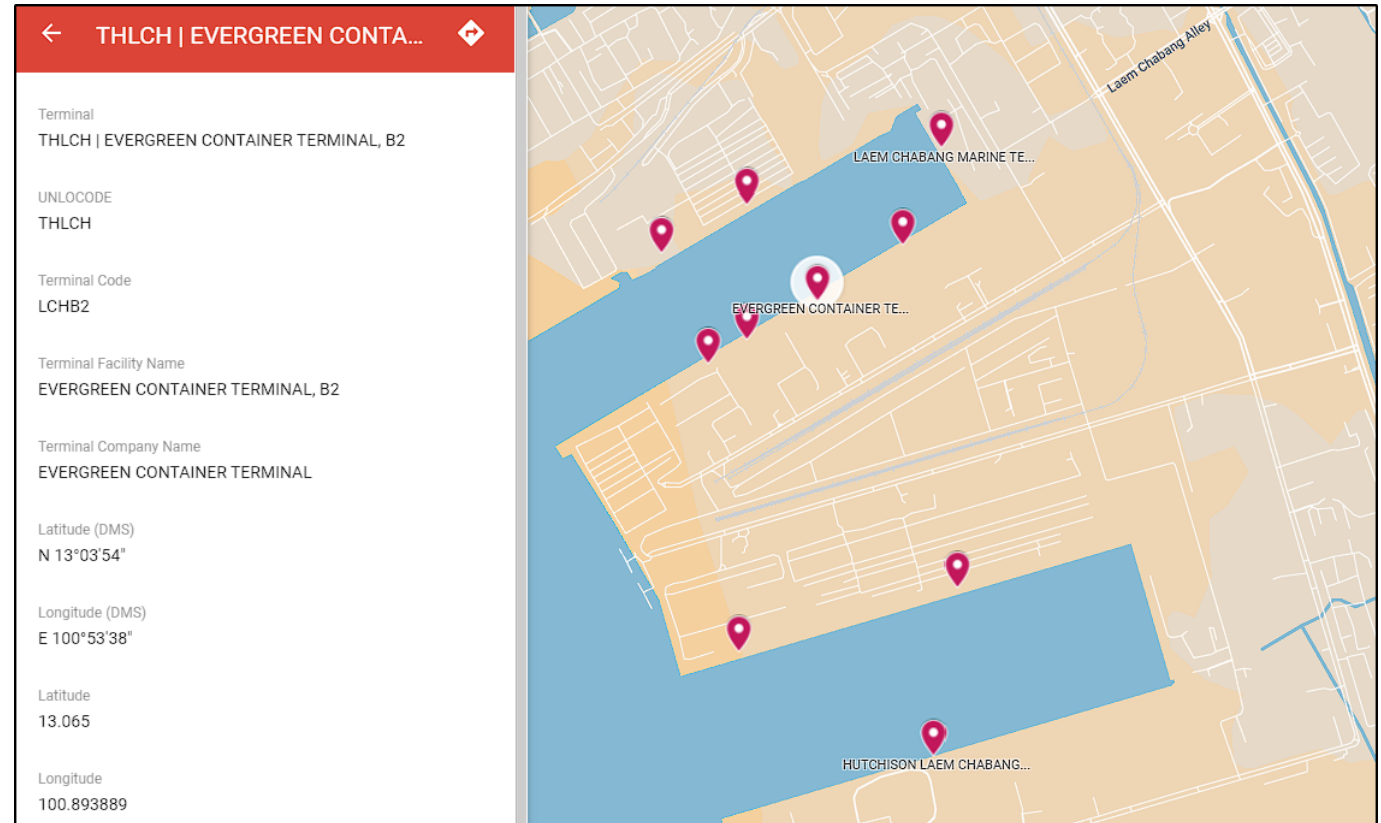


- Human-readable
 - Excel, <https://smdg.org/documents/smdg-code-lists/smdg-terminal-code-list/> (also contains a change log)
 - Google Maps, see <https://www.google.com/maps/d/viewer?mid=1nbJI9NkpAayVpSJqy13qJ2xhatcIKQJK>
- Automatic processing
 - GitHub, see <https://github.com/smdg-org/Terminal-Code-List>
 - API (maintained by BIC, for SMDG and BIC facilities), see <https://www.bic-code.org/api/>

Joint API for BIC and SMDG facilities



```
{
  "code": "THLCHLCHB2",
  "codeProvider": "SMDG",
  "unLocode": "THLCH",
  "countryCode": "TH",
  "operator": {
    "name": "EVERGREEN CONTAINER TERMINAL"
  },
  "codeListProviderCode": "LCHB2",
  "alternativeUnLocode": "",
  "remarks": "",
  "aliasCode": "",
  "facility": {
    "geographicalCoordinate": {
      "latitude": "13.065",
      "longitude": "100.893889"
    },
    "name": "EVERGREEN CONTAINER TERMINAL, B2",
    "address": {
      "street": "",
      "city": "Laem Chabang",
      "state": "",
      "postcode": "",
      "country": "Thailand"
    }
  },
  "formattedAddress": "Laem Chabang Port B2, Tambol Tung Sukhla, Amphur Sriracha, Chonburi 20230, Thailand",
}
```



Global Container Geofence Library



- Ongoing BIC project to geofence BIC and SMDG facilities
- See <https://www.bic-code.org/facility-codes/the-global-container-geofence-library/>

Global Container Geofence Library - Review Tool Sign Up Login

Registered Facility Code:
THLCHLCHB2

FACILITY
EVERGREEN CONTAINER TERMINAL, B2

CODE PROVIDER
SMDG

ADDRESS
Laem Chabang
Thailand

OPERATOR
EVERGREEN CONTAINER TERMINAL

GEOFENCE METADATA
Approval
Review Panel
Version
March 28, 2024

{ } Copy geofence

Google

Karte Satellit

Laem Chabang Terminal A-3

Laem Chabang Port, Chon Buri, Thailand

LCB Container Terminal 1 Co., Ltd B1

SRTO Office

W/H Stang LPP

Hutchison Laemchabang Terminal (C1C2)

Hutchison Ports Thailand Office

ESCO (B1)

TIPS Co., Ltd (B4)

Laem Chabang International Terminal

Facility

Berth

How to contribute



- Everyone in the community is welcome to contribute
- Email address is codelists@smdg.org
- For terminal code requests, use the form at <https://smdg.org/documents/smdg-code-lists/smdg-terminal-code-list/>
- All code requests **MUST** contain **GPS** coordinates of a reference point on the terminal close to the pier (degrees-minutes-**seconds!**)
- Help to improve data quality by informing us about incorrect/outdated entries
- Use the TCL world map as visual aid

Useful links



- SMDG Terminal Code List
<https://smdg.org/documents/smdg-code-list/smdg-terminal-code-list/>
- SMDG Terminal Facilities on the world map
<https://www.google.com/maps/d/viewer?mid=1nbJI9NkpAayVpSJqy13qJ2xhatcIKQJK>
- Usage of Code Lists in EDIFACT messages maintained by SMDG (Recommendation #07)
<https://smdg.org/documents/smdg-recommendations/>
- SMDG EDIFACT Mapping Implementation Guidelines (MIGs)
<https://smdg.org/documents/edifact-migs-message-implementation-guidelines/>
- UN/ECE Recommendation 16 for UN/LOCODEs
<https://unece.org/trade/publications/recommendation-ndeg16-united-nations-code-trade-and-transport-locations>
- API to query the SMDG TCL (by BIC)
<https://www.bic-code.org/api/>
- Global Container Geofence Library project (by BIC)
<https://www.bic-code.org/facility-codes/the-global-container-geofence-library/>



Thank You

Presented by: Mark Lim (SMDG)